

FOR WHOM THE DIE ROLLS

Aug/Sep 2012

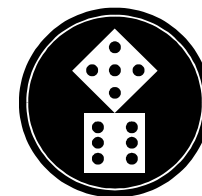
Published by Keith Thomasson

Issue 194

This page has been added to the PDF copy so that reports that appear on facing pages in the paper copy are shown side-by-side.



£2.00



INSIDE STORY

This is FOR WHOM THE DIE ROLLS #194, a game playing magazine for game players, published by Keith Thomasson, 14 Stepnells, Marsworth, Near Tring, Herts, HP23 4NQ. This issue costs £2.00 (including postage).

E-mail: Keith@Thomasson.com

Web site: www.fwtwr.com

Subscription payments can be sent via PayPal to Keith@Thomasson.com

Please specify the currency for international payments as GBP

WAIT

① means that number of players needed. ⇨③ means up to that number needed. ⇨ means there is no limit. ⚙ means a list is full.

Games starting in this issue...

You should own these games or be familiar with their rules...

- ⇨④ 1825 Howard Bishop
- ⇨③ 1826 Pete Campbell, Don Smith
- ⇨③ 1830 (Variant map 2) .. Pete Campbell, Don Smith
- ⇨① 1837 Pete Campbell, John Hopkins, Don Smith, Mark Frueh
- ⇨① 1856 Mike Hutton, Don Smith, Lyndon Gurr, Mark Frueh
- ⇨⑥ 18C2C Pete Campbell, Mark Frueh
- ⇨② 18Rh1 Rhineland Willem Moene, Pete Campbell, Alan Harvey
- ⇨③ Acquire Tony Wilcock, Bob Coull
- ⇨① Acquire (Special Powers) Colin Sharpe, Michael Graystone, John Colledge
- ⚙ Agricola Allan Stagg, Jim Reader, Kevin Lee, Pete Campbell
- ⇨⑤ Baltimore & Ohio Alan Harvey
- ⇨④ Outpost Willem Moene, Marcus Pratt, Lyndon Gurr, Pete Campbell
- ⇨① Puerto Rico Jim Reader, Willem Moene, Kevin Lee
- ⇨⑤ Revolution! Allan Stagg (normally a 4-player, but can take 6 with The Palace expansion)
- ⚙ RoboRally Allan Stagg, Jim Reader, Mark Stretch, Don Shailer, Roger Trethewey, Howard Bishop, Steve Ham, Mike Head
- ⇨③ Saint Petersburg Bob Coull
- ⇨① Steam: Rails to Riches .. Pete Campbell, Mike Hutton, Marcus Pratt
- ③ Year of the Dragon Pete Campbell

I supply everything you need for these...

- ③ Breaking Away Steve Ham, Jim Reader, Kevin Lee
- ⇨③ Bus Boss Jim Reader, Roger Trethewey
- ⇨③ Railway Rivals Jim Reader, Bob Coull

£1 fee for each game, unless otherwise stated, subsidising the cost of the zine

START

Welcome to issue #194. This is the first issue in a while to have no new games, ,and the next looks likely to be in the same position.

It is also going to be light on chat, as I am struggling to think of things to say. As the rest of the zine is done, I shall fill the space with images from GenCon and leave you in peace, other than to mention that the next deadline is a week later than the predicted dates as this issue has taken a little longer than expected.



If you have been following the Bob & Angus show on YouTube you will know that a deal was struck between GenCon CEO Adrian Swartout and the sheep for access to GenCon, but it didn't work out quite as they expected, although you can see from the cover that they did make it into the show at some point.

One of the celebrity guests as GenCon was Nichelle Nicholls, who played Uhura in the original Star Trek series. She was on the Mayfair Games stand on the Friday for a signing session, adding her autograph to copies of the new Star Trek Catan game, which is due out on general release later this month. It's like Settlers, Jim, but with character cards that let you do things like force trades with other people or give you protection from the Robber. Sorry, protection from the Klingon Battle Cruiser.



It is amazing what you have to do when you are working at a show, although I managed to avoid being dressed up as a resource ribbon. The team, from left to right, are Bob, Artem, Alex, Carl, Katy, ?? and Patrick. One ribbon is missing. The Sheep ribbon was AWOL and later found in the booth, so wasn't available for the group photo.

Working on the port side of the Mayfair Games stand, where the Catan range can be found in abundance, was Guido Teuber, son of the designer Klaus Teuber.

Guido is based in Oakland and reputedly has a thing for Newcastle Brown Ale.





1825-X31

We are closer to the brown tiles but not there yet.

OR8 - OR9

OR8	Pres	Lays	Run	Pay	Notes	Price	Credit	Trains
LNWR	LR	-	-	170	Yes	-	160▲	440 3
Mid	MH	12:Q17:6	-	200	Yes	-	142▲	20 3 2 2
NBR	JS	15:G7:1	-	180	No	①	67▼	70 4 3 3
Cal	Rcvr	6:H6:1	-	-	-	①	71▼	330 4
L&YR	LR	-	-	240	Yes	②	100▲	80 3 2 2 2

Notes: ① 430 to the bank for a '4' train
② 330 to the LNWR for a '2' train

OR9	Pres	Lays	Run	Pay	Notes	Price	Credit	Trains
LNWR	LR	-	-	100	Yes	①	180▲	10 4 3
Mid	MH	3:P18:5	-	200	Yes	-	160▲	20 3 2 2
NBR	JS	15:F8:4	-	300	Yes	-	90▲	70 4 3 3
Cal	Rcvr	7:H8:6	-	140	No	② ③	67▼	330 4
L&YR	LR	-	-	300	Yes	-	142▲	80 3 2 2 2

Notes: ① 430 to the bank for a '4' train
② 100 to the bank for terrain costs
③ 40 to the bank for a token in G7

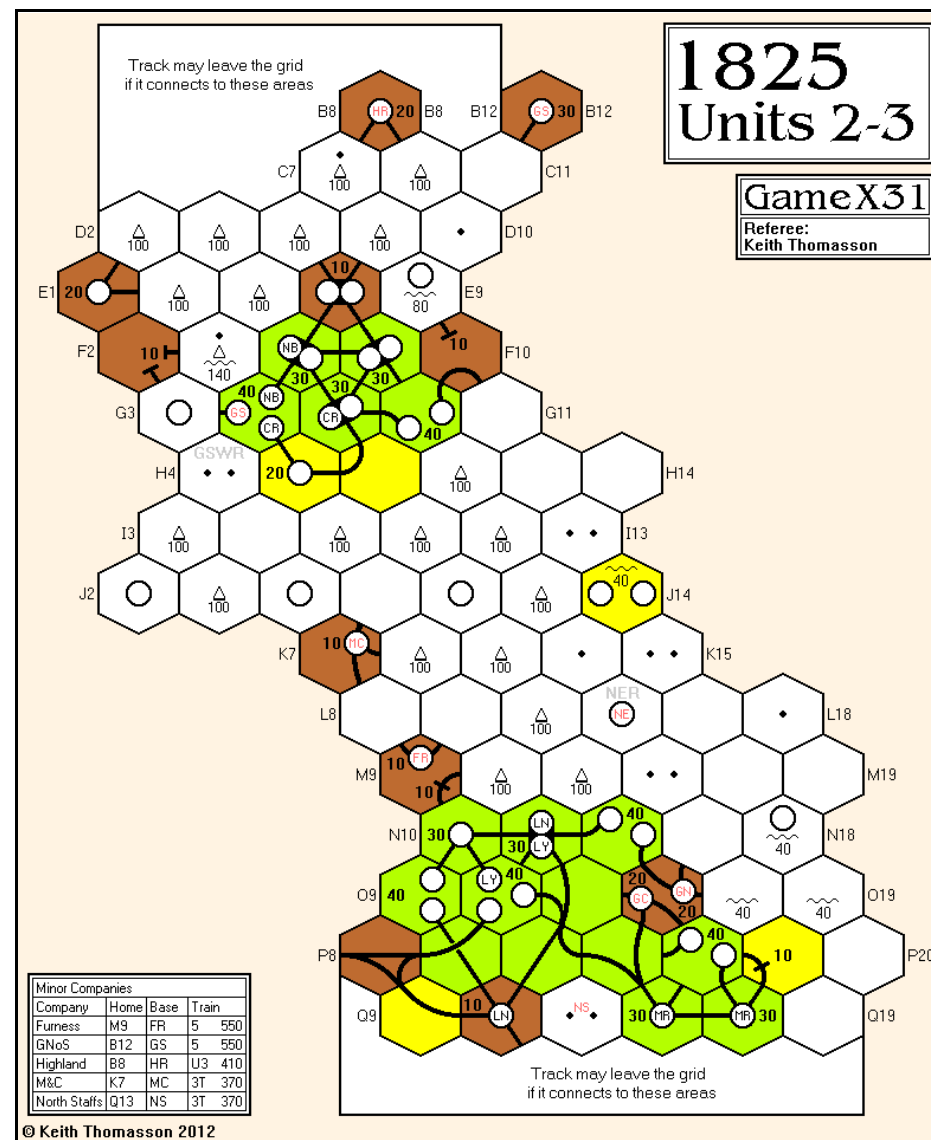
Cash Flow	b/f	OR8	OR9	c/f	Value	%	Certs
Lionel Robbins	1	241	285	527	2,361	29.0▲	11
John Shelley	26	10	250	286	1,066	13.1▲	8
Willem Moene	30	177	182	389	1,862	21.4▲	11
Mike Hutton	74	141	170	385	1,739	21.4▼	8
(John Boocock)	218	64	50	332	1,103	13.6▼	5

Portfolio	Privates	LNWR	Mid	NER	NBR	Cal	L&YR	GCR	GNR	GSWR
Lionel Robbins	A&F	4D	-	-	1	-	7D	-	-	-
John Shelley	TWW	-	-	-	8D	-	-	-	-	-
Willem Moene	C&HP	1	5	-	-	2	2	-	-	-
Mike Hutton	-	1	5D	-	1	-	1	-	2D	-
(John Boocock)	L&M	2	-	-	-	3D	-	-	-	-

Bank (new)	-	-	10	-	4	-	10	8	10
Price (new)	100	82	82	76	76	71	71	71	67
Bank (pool)	2	-	-	-	1	-	-	-	-
Price (pool)	180	160	-	90	67	142	-	71	-
Company credit	10	20	-	70	330	80	-	-	-
Tokens	2	2	4	2	2	2	4	4	3

Trains 4.3 3.2.2 4.3.3 4 3.2.2.2
Bank cash: 13,081 Certificate limit: 18 Trains: 1 x '4', 5 x '5'...

Tiles	Tile number/Availability										Two Operating Rounds between Stock Rounds			
1/2	2/2	3/1	4/4	5/4	6/3	7/5	8/9	9/9	55/2	56/2	69/2	114/1		
115/1	12/2	13/1	14/5	15/2	16/2	17/1	18/2	19/2	20/1	21/1	22/1	23/5		
24/5	25/-	26/2	27/1	28/3	29/2	30/1	31/1	52/1						



© Keith Thomasson 2012

Orders required for the following round

By the early deadline

SR7



1829-A30

Most of the Steam Packets
are now in play.

OR16 - SR12

OR16	Pres	Lay	Survey	Run	Pay	Notes	Price	Credit	Trains
LNWR	PC	-	►S15	300	Yes	-	200▲	40	5 3
GWR	RT	10:X16:3	►U13 !	140	No	-	180▼	420	4
Mid	JS	24:O13:6	►P14	390	Yes	-	112▲	110	5 5
LSWR	Rcvr	-	►X24	200	No	-	82▼	320	3 3
GNR	LR	23:R18:4	►Q19	160	Yes	-	90▲	100	4
LBSC	Rcvr	-	►X12	130	No	-	82▼	500	3
GER	RT	27:W17:2	►V14	270	Yes	-	90▲	110	4 3
GCR	RT	35:X16:1	►Q17	340	Yes	①	53▲	110	5 4
L&YR	JS	30:N16:6	►N18	220	Yes	-	61▲	50	4 3
SECR	Rcvr	5:W25:5	►W23	30	No	② ③	20▼	40	-

- Notes: ① 40 to the bank for a token in Q17
 ② Tile lay closes the C&W private
 ③ 10 to the bank to rent a '5' train

Stock Round 12

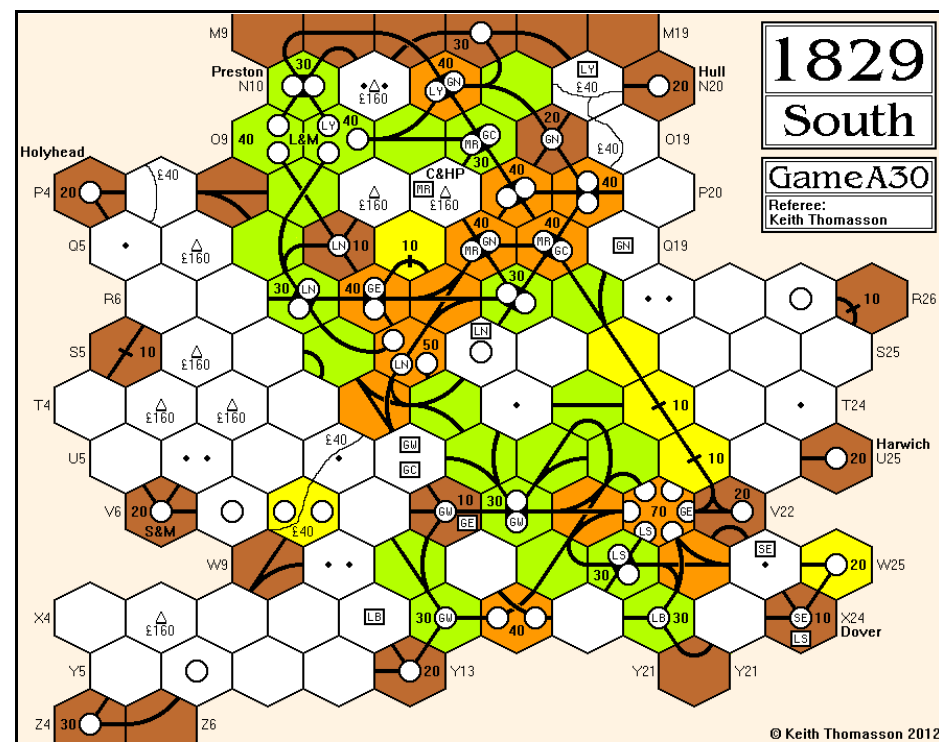
John Shelley	Lionel	[John Boocock]	Pete	Rob
+ LNWR pool	- 3 LSWR - 1 LBSC + LNWR pool	✗	- 2 LSWR + LBSC pool	+ LNWR pool
- 1 LBSC + LNWR pool	+ Hull Steam Packet	✗	+ LBSC pool (gains Dir)	✗
✗	+ Preston Steam Packet	✗	+ Holyhead Steam Packet	✗
- 1 LNWR + Harwich Steam Packet	+ LNWR pool	✗	✗	✗
✗	✗	Priority for SR13		

Portfolio	Priv/SP	LNWR	GWR	Mid	LSWR	GNR	LBSC	GER	GCR	L&YR	SECR
Pete Campbell	Holyhead	4D	2	-	-	4	5D	-	-	3	-
Rob Thomasson	S&M	1	5D	-	-	-	-	5D	9D	-	-
John Shelley	Harwich	1	1	7D	-	-	1	2	-	7D	-
⚡ Lionel Robbins	Hull, Prest	3	2	2	-	5D	-	3	1	-	-
[John Boocock]	L&M	1	-	1	5D	1	4	-	-	-	-

Bank (new)	Dover	-	-	-	-	-	-	-	-	-	4
Price (new)		100	90	82	76	71	67	64	61	58	56
Bank (pool)	C&HP	-	-	-	5	-	-	-	-	-	6D
Price (pool)		200	180	112	82	90	82	90	53	61	20
Company credit		40	420	110	320	100	500	110	110	50	40
Tokens		3	3	2	3	2	3	2	2	1	2
Trains		5.3	4	5.5	3.3	4	3	4.3	5.4	4.3	-
Bank cash: 17,636	Certificate limit: 18	Trains: 1 x '5', 4 x '7'									

Cash Flow	b/f	OR16	SR12	c/f	Value	%	Certs
Pete Campbell	460	250	-570	140	2,823	20.6▼	17
Rob Thomasson	723	446	-200	969	3,026	22.0▲	18
John Shelley	592	481	-838	235	2,808	20.5▲	18
Lionel Robbins	663	303	-822	144	2,851	20.8▼	17
[John Boocock]	771	105	0	876	2,226	16.2▼	12

Tiles	Tile number/Availability							Three Operating Rounds between Stock Rounds						
1/2	2/2	3/1	4/4	5/3	6/4	7/4	8/8	9/9	10/3	12/3	13/1	14/-		
15/-	16/1	17/1	18/-	19/2	20/1	21/1	22/-	23/1	24/3	25/-	26/2	27/1		
28/-	29/1	30/-	31/-	32/-	33/1	34/-	35/-	36/1	37/1	38/-	39/1	40/1		
41/2	42/2	43/-	44/1	45/-	46/1	47/-								



Orders required for the following rounds

By the early deadline

OR17, OR18

Adjudication can pause between rounds if requested



1830-S32

Adam starts two new companies.

OR2 - SR3

OR2	Pres	Lay	Run	Pay	Notes	Price	Credit	Trains
B&O	WM	57:J14:2	-	-	① ②	82B▼	760	2 2
C&O	AR	8:G3:1	70	Yes	③ ④	67H▲	4	3 2 2 2
PRR	JS	57:H16:3	30	Yes	⑤	60I▲	419	3 2

- Notes: ① 80 to the bank for terrain costs
 ② 160 to te bank for two '2' trains
 ③ 340 to the bank for two '2' trains and a '3' train
 ④ 300 to Adam for the C&StL and M&H privates
 ⑤ 180 to the bank for a '3' train

Stock Round 3

John	Don	Adam	Willem
+ B&O pool	+ NYNH new (floated)	- 3 C&O {▼40K} + B&M/Pres {67}	+ C&O pool
✗	✗	+ B&M new	✗
✗	✗	+ B&M new	✗
✗	✗	+ B&M new	✗
✗	✗	+ B&M new (floated)	✗
✗	✗	- 3 B&M {▼60I} + NYC/Pres {67}	✗
✗	✗	+ NYC new	✗
✗	✗	+ NYC new	✗
✗	✗	+ NYC new	✗
✗	✗	+ NYC new (floated)	✗
✗	✗	✗	Priority for SR3

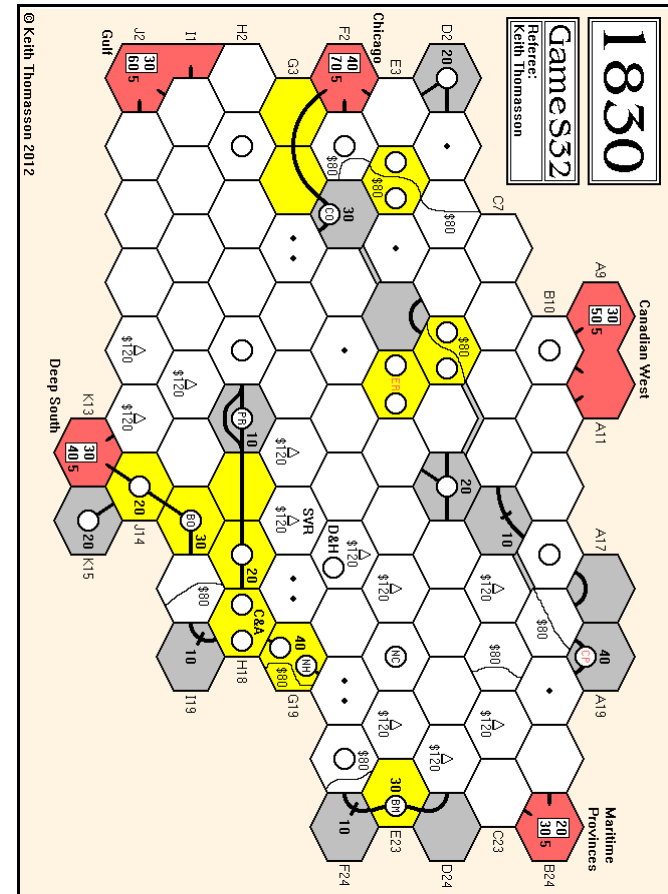
Portfolio	Privates	B&M	B&O	C&O	CPR	Erie	NYC	NYNH	PRR
Don Smith	C&A	-	-	-	-	-	-	6P	-
Adam Romoth	-	3P	-	3P	-	-	6P	-	-
Willem Moene	D&H	-	5P	1	-	-	-	-	-
John Shelley	SVR	-	1	2	-	-	-	-	6P

Bank (new)	4	4	-	10	10	4	4	1
Price (par)	67	100	71	-	-	67	76	67
Bank (pool)	3	-	4	-	-	-	-	3
Price (pool)	60I	82B	40K	-	-	67F	76D	60I
Company credit	670	760	4	-	-	670	760	419
Tokens	2	2	2	-	-	4	2	3
Trains	-	2 2	3 2 2 2	-	-	-	-	3 2

Bank cash: 8,624 Certificate limit: 16 Trains: 3 x '3', 4 x '4'...
 Current operating order: B&O, NYNH, NYC, PRR, B&M, C&O

Cash Flow	b/f	OR2	SR3	c/f	Value	%	Certs
Don Smith	71	25	-76	20	636	25.7▲	6
Adam Romoth	48	372	-402	18	720	29.1▲	5-9
Willem Moene	43	45	-40	48	568	23.0▼	5-6
John Shelley	52	37	-82	7	549	22.2▲	2-9

Tiles	Tile number/Availability				Two Operating Rounds between Stock Rounds							
1/1	2/1	3/2	4/2	7/4	8/6	9/6	55/1	56/1	57/2	58/2	69/1	14/3
15/2	16/1	18/1	19/1	20/1	23/3	24/3	25/1	26/1	27/1	28/1	29/1	53/2
54/1	59/2											



Orders required for the following rounds By the early deadline
 OR3, OR4 Adjudication can pause between rounds if requested



1856-E31

The BBG is floated, but the WGB doesn't quite make it.

SR7

Stock Round 7

John	Rob	Don	Adam	Mark
- 2 LPS {↔}	+ GW new	+ WGB/Pres\$100	- 3 CA {↔65D}	+ GW pool
+ BBG/Pres\$100			+ GW new	
+ BBG new	+ CV new	+ WGB new	+ TGB new	+ GW pool
+ BBG new	+ CV new	+ WGB new	+ TGB new	+ THB new
+ BBG new	✗	- 1 CPR {↔}	+ CV new	✗
		+ WGB new		
+ BBG new	✗	✗	✗	✗
- 1 BBG {↔90B}	✗	✗	✗	✗
+ CPR new				
✗	Priority for SR8			

Cash Flow	b/f	SR7	c/f	Value	%	Certs
Adam Romoth	121	-120	1	1,171	16.1▲	8
Mark Frueh	418	-400	18	1,888	26.0▼	13
John Shelley	401	-345	56	1,446	19.9▼	12
Rob Thomasson	375	-250	125	1,475	20.3▲	13
Don Smith	434	-430	4	1,274	17.6▼	10

Portfolio	BBG	CA	CPR	CV	GT	GW	LPS	TGB	THB	WGB	WR
Adam Romoth	-	2P	-	1	-	5P	-	2	-	-	-
Mark Frueh	-	-	-	-	1	2	1	-	6P	-	5P
John Shelley	5P	-	1	6P	-	-	3P	-	-	-	-
✗ Rob Thomasson	-	-	6P	2	-	1	-	6P	-	-	-
Don Smith	-	-	-	-	6P	-	1	-	-	5P	-

Bank (new)	4	5	1	1	1	-	-	2	4	5	-
Price (par)	100	100	65	90	80	70	65	100	100	100	75
Bank (pool)	1	3	2	-	2	2	5	-	-	-	5
Price (pool)	90B	65D	70G	90B	110E	150D	110E	100A	100A	100A	150D
Company credit	1,000	1	111	339	415	297	130	249	100		750
Loans	-	2	5	1	5	-	6	-	2		2
Tokens	3	2	2	2	3	3	-	1	-	2	2
Trains	-	3	3	5.4	4.3	5	4	5.4	3		3
Bank cash: 8,404			Certificate limit: 13					Trains: 2 x '6', Diesels			
Current operating order:			GW, WR, LPS, GT, TGB, THB, CV, BBG, CPR, CA								

Tiles		Tile number/Availability										Three Operating Rounds between Stock Rounds	
1/1	2/-	3/2	4/3	5/1	6/2	7/5	8/7	9/7	55/1	56/-	57/2	58/2	
69/1	14/1	15/3	16/1	17/1	18/1	19/1	20/1	23/4	24/4	25/1	26/1	27/1	
28/1	29/1	59/-	120/1	121/2	39/1	40/1	41/3	42/2	43/2	44/1	45/2	46/2	
47/2	63/4	64/1	65/1	66/1	67/1	68/1	70/1	122/-	125/1	126/-	127/-		

We will pause after OR10 if the CGR has been formed. Please let me know what to do if your company needs help in clearing any outstanding loans. The default will be no help.



Orders required for the following rounds

By the early deadline

OR10, OR11

Adjudication can pause between rounds if requested



1861-F31

Cash is converted into shares,
but nothing of any great note.

SR5

Stock Round 5

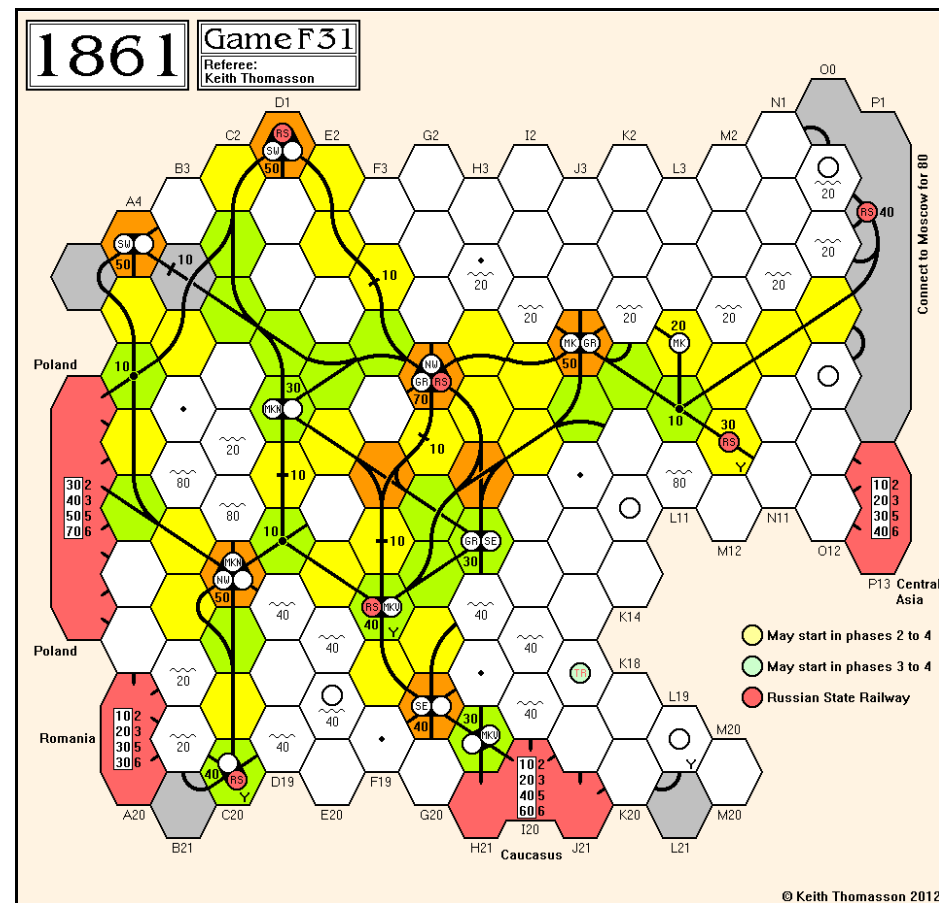
Lyndon	Lionel	Willem	Don	Pete
- 1 MKN {↔}	+ MK new	+ MKV new	+ MKN pool	- 1 MKV {↔}
+ GRR new				+ MKN new
+ NW new	+ MK new	✗	✗	+ MK new
+ NW new	+ SW new	✗	✗	✗
✗	✗	Priority for SR6		

Cash Flow	b/f	SR5	c/f	Value	%	Certs
Willem Moene	172	-120	52	832	13.6▼	5
Don Smith	296	-220	76	1,106	18.1▲	6
Pete Campbell	245	-190	55	1,255	20.5▼	7
Lyndon Gurr	345	-300	45	1,385	22.6▲	7
Lionel Robbins	381	-330	51	1,551	25.3▼	8

Portfolio	GRR	MK	MKN	MKV	MVR	NW	SE	SW	RSR
Willem Moene	-	-	-	5D	-	-	1	-	
Don Smith	6D	-	1	-	-	-	-	-	
Pete Campbell	-	6D	3D	-	-	-	-	-	
Lyndon Gurr	4	-	-	-	-	4D	-	-	
Lionel Robbins	-	2	-	-	-	-	4D	4D	
Bank (new)	-	2	6	4	10	6	5	6	
Bank (pool)	-	-	-	1	-	-	-	-	
Price	135C	90E	220A	120D		200A	180B	150C	
Company credit	564	305	252	540		840	380	630	100
Loans	-	3	-	-	-	-	-	-	-
Tokens	-	1	1	1	4	1	1	1	2
Trains	4	5	5	3	3	3	4	3	5
Bank cash: 11,110 Certificate limit: 13 Trains: 1 x '5' 2 x '6'									
Current operating order: MKN, NW, SE, SW, GRR, MKV, MK, RSR									

Tiles	Tile number/Availability										Two Operating Rounds between Stock Rounds									
3/2	4/2	5/2	6/1	7/2	8/2	9/2	57/2	58/3	201/3	202/4	621/1	14/1								
15/-	16/2	17/2	18/2	19/1	20/2	21/2	22/2	23/-	24/3	25/2	26/2	27/1								
28/2	29/2	30/2	31/2	87/1	88/1	204/1	207/4	208/2	619/2	622/1	624/1	625/1								
626/1	635/1	637/1	39/2	40/2	41/2	42/2	43/2	44/2	45/1	46/2	47/1	63/2								
611/3	623/2	636/-	638/-	641/-	801/1	911/3														

☛ Yellow track tiles are unlimited





1861-E33

The minor companies are sorted out without any fuss.

MINORS - OR2

Stock Round 1 - Minors

Mike	Lyndon	Pete	John	Don
	120 on N	✕	140 on N	✕
✕	✕	✕	N for 140	140 on MNN
✕	✕	✕	✕	MNN for 140
105 on MK	130 on MK	✕	✕	✕
✕	MK for 130	100 on SPW	✕	✕
105 on SPW	✕	✕	✕	✕
SPW for 105	120 on KR	✕	✕	✕
✕	KR for 120	100 on OK	✕	✕
✕	✕	OK for 100	✕	✕
✕	✕	100 on KB	✕	✕
✕	✕	KB for 100	Priority for SR2	

OR1	Pres	Lay	Run	Pay	Notes	Price	Credit	Loans	Trains
N	JS	-	-	-	①	65F▼	40	-	2
MNN	DS	8:H7:3	8:I8:6	-	② ①	65F▼	20	-	2
MK	LG	4:G10:1	9:G12:1	-	② ①	60G▼	20	-	-
KR	LG	621:F15:3	-	-	① ③	55G▼	10	-	2 2
SPW	MH	58:A8:2	-	-	①	45H▼	5	-	2
OK	PC	202:C20:5	9:C18:1	-	② ④ ①	45H▼	25	1	2
KB	PC	9:B13:3	-	-	①	45H▼	0	-	2

- Notes: ① 100 to the bank for a '2' train
② 20 to the bank for a second tile
③ 10 to the MK for a '2' train
④ Loan acquired

OR2	Pres	Lay	Run	Pay	Notes	Price	Credit	Loans	Trains
N	JS	-	80	Half	-	70F▲	80	-	2
MNN	DS	8:K8:6	70	Half	-	70F▲	55	-	2
MK	LG	9:G14:1	7:G16:6	-	① ②	-	-	-	-
KR	LG	9:E14:3	58:D13:3	130	③ ① ④	60G▲	50	-	2 2
SPW	MH	8:A10:5	-	70	Half	50H▲	40	-	2
OK	PC	9:C16:1	-	60	Half	50H▲	0	-	2
KB	PC	9:A12:3	-	60	Half	50H▲	30	-	2

- Notes: ① 20 to the bank for a second tile
② Nationalised
③ Loan acquired
④ Loan redeemed

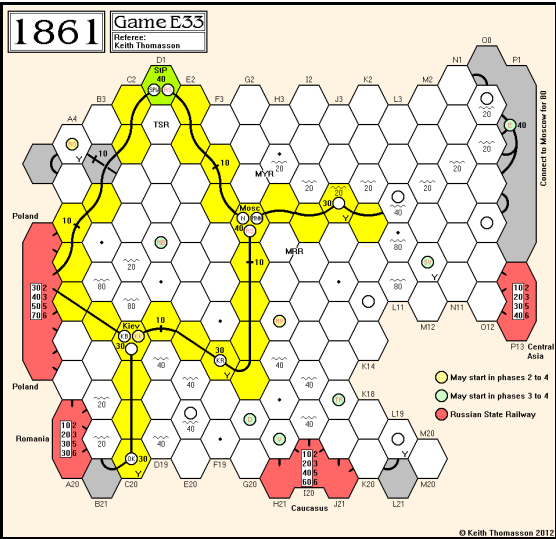
Cash Flow	b/f	Minors	OR1	OR2	c/f	Value	%	Certs
Mike Hutton	132	-105	40	75	142	362	22.1▲	3
Lyndon Gurr	252	-250	0	165	167	287	17.6▼	1
Pete Campbell	207	-200	15	75	97	342	20.9▲	3
John Shelley	167	-140	25	65	117	332	20.3▲	2
Don Smith	177	-140	20	55	112	312	19.1▼	2

Portfolio	Privates	N	KB	KK	KR	MNN	MV	OK	RO	SPW
Mike Hutton	TSR WVR	-	-	-	-	-	-	-	-	2D
Lyndon Gurr	-	-	-	-	2D	-	-	-	-	-
Pete Campbell	BSSC	-	2D	-	-	-	-	2D	-	-
John Shelley	MRR	2D	-	-	-	-	-	-	-	-
Don Smith	MYR	-	-	-	-	2D	-	-	-	-

Bank (new)	-	-	2	-	-	2	-	2	-
Bank (pool)	-	-	-	-	-	-	-	-	-
Price	70F	50H		60G	70F		50H		50H
Company credit	80	30		50	55		0		40
Loans	-	-		-	-		-		-
Tokens	-	-		-	-		-		-
Trains	2	2		2.2	2		2		2
Bank cash: 14,110	Certificate limit: 13			Trains: 3 x '2', 7 x '3'...					
Current operating order:	N, MNN, KR, SPW, OK, KB								

Tiles		Tile number/Availability		Two Operating Rounds between Stock Rounds									
3/2	4/2	5/2	6/1	7/④	8/④	9/④	57/2	58/3	201/3	202/4	621/1	14/1	
15/-	16/2	17/2	18/2	19/1	20/2	21/2	22/2	23/-	24/3	25/2	26/2	27/1	
28/2	29/2	30/2	31/2	87/1	88/1	204/1	207/4	208/2	619/2	622/1	624/1	625/1	
626/1	635/1	637/1	39/2	40/2	41/2	42/2	43/2	44/2	45/1	46/2	47/1	63/2	
611/3	623/2	636/-	638/-	641/-	801/1	911/3							

④ Yellow track tiles are unlimited



Orders required for the following round	By the early deadline
SR2	



1870-N29

The SLSF makes its connection run before we come to a close.

OR16 - OR18

OR16	Pres	Lays	Run	Pay	Notes	Price	Credit	Trains
FW	LG	171:B11:1	-	810	Yes	-	400A	471 10 8
GMO	WM	-	-	230	Yes	-	325A	79 6
ATSF	MF	-	-	330	Yes	-	300A	34 6
SLSF	DS	4:E8:3	-	340	Yes	-	250B	0 8
SSW	PC	20:I4:2	-	420	Yes	-	225A	0 12
MKT	PC	142:H3:2	-	380	Yes	-	200B	165 8
SP	MF	170:C18:2	-	460	Yes	-	160A	0 12
MP	LG	172:C18:1	-	450	Yes	-	72C	420 12
TP	LQ	25:L5:3	-	290	Yes	-	68E	1 6
IC	WM	-	-	420	Yes	-	64D	0 10

OR17	Pres	Lays	Run	Pay	Notes	Price	Credit	Trains
FW	LG	8:C16:1	-	810	Yes	①	400A	674 10 8
SLSF	DS	Connection run	-	330	Yes	②	275B	0 8
GMO	WM	-	-	260	Yes	-	350A	79 6
ATSF	MF	-	-	330	Yes	-	325A	67 6
SLSF	DS	-	-	390	Yes	-	300B	0 8
SSW	PC	47:I4:2	-	480	Yes	-	250A	0 12
MKT	PC	146:H3:2	-	400	Yes	-	225B	165 8
SP	MF	41:L9:6	-	470	Yes	③	180A	0 12
MP	LG	141:B13:6	-	450	Yes	-	76C	420 12
TP	LQ	147:B13:5	-	290	Yes	-	72E	1 6
IC	WM	-	-	420	Yes	-	68D	0 10

- Notes: ① 40 to the bank for terrain costs
② Destination marker placed in M22
③ The bank has run out of cash

OR18	Pres	Lays	Run	Pay	Notes	Price	Credit	Trains
FW	LG	-	-	820	Yes	-	400A	920 10 8
GMO	WM	-	-	260	Yes	-	375A	79 6
ATSF	MF	23:L19:1	-	330	Yes	-	350A	100 6
SLSF	DS	-	-	390	Yes	-	325B	0 8
SSW	PC	-	-	480	Yes	-	275A	0 12
MKT	PC	-	-	400	Yes	-	250B	165 8
SP	MF	-	-	470	Yes	-	200A	0 12
MP	LG	-	-	460	Yes	-	82C	420 12
TP	LQ	-	-	290	Yes	-	76E	1 6
IC	WM	-	-	420	Yes	-	68D	0 10

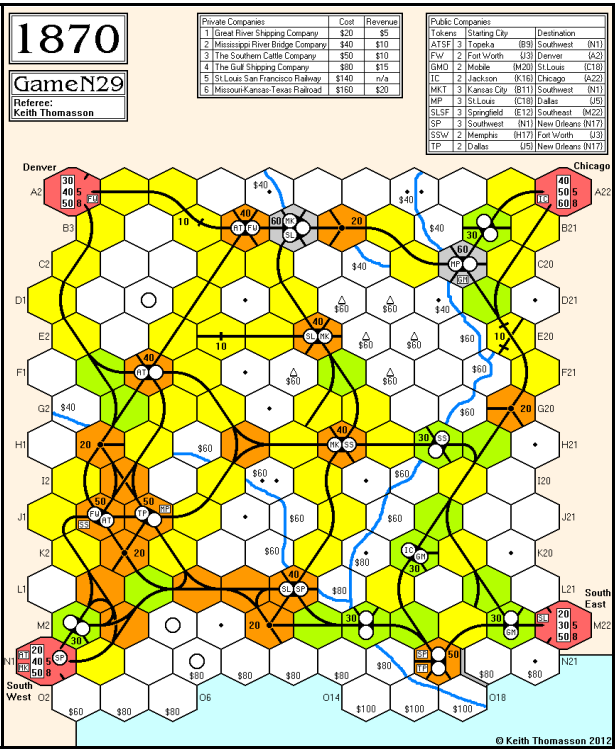
Cash Flow	b/f	OR16	OR17	OR18	c/f	Value	%	Certs
Pete Campbell	497	754	813	814	2,878	7,226	18.7	17
Lyndon Gurr	916	1,267	1,314	1,294	4,791	9,811	25.4	22
Willem Moene	651	711	818	754	2,934	7,731	20.0	19
Don Smith	106	449	687	489	1,731	5,432	14.1	12
Mark Frueh	1,749	673	722	690	3,834	8,468	21.9	16

Congratulations to Lyndon on the game. We will round up next time, so let me know if you have anything to say about the game.

Portfolio	ATSF	FW	GMO	IC	MKT	MP	SLSF	SP	SSW	TP
Pete Campbell	-	-	1	3	7P	1	-	-	7P	-
Lyndon Gurr	-	7P	-	1	-	6P	1	3	1	6P
Willem Moene	-	-	8P	6P	-	2	2	1	1	1
Don Smith	1	-	1	-	3	-	6P	1	-	1
Mark Frueh	8P	-	-	-	-	1	1	5P	1	2

Bank (new)	-	-	-	-	-	-	-	-	-	-
Price (par)	68	68	100	72	72	90	100	100	100	68
Bank (pool)	-	-	-	-	-	-	-	-	-	-
Price (pool)	350A	400A	375A	72D	250B	82C	325B	200A	275A	76E
Company credit	100	920	79	0	165	420	0	0	0	1
Redeemed shares	1	3	-	-	-	-	-	-	-	-
Tokens	-	-	-	1	-	2	-	1	-	1
Trains	6	10 8	6	10	8	12	8	12	12	6
Bank cash:	5,853	Certificate limit: 13								Trains: 12's

1st	Lyndon Gurr	9,811	25.4%
2nd	Mark Frueh	8,488	21.9%
3rd	Willem Moene	7,731	20.0%
4th	Pete Campbell	7,226	18.7%
5th	Don Smith	5,432	14.1%





1870-A32

Willem's fund raising plans were thwarted by MP shares in the pool.

SR5

For information, if your orders for running your trains do not specify any routes, I will rarely accept requests in hindsight to adjust the value of the runs I manage to find during the adjudication, as this tends to disrupt the flow of the game. If I make a mistake based on what you gave me, that would be different.

Stock Round 5				
John	Willem	Adam	Lyndon	Lionel
- 1 MP {v82E}	- 1 MKT {v64H}	+ MP new	- 1 MP {v76F}	+ MKT new
- 1 SLSF {v60H}	- 1 SLSF {v55I}		- 1 MKT {v}	
+ TP/Pres {100}	+ GMO/Pres {76}		+ SP/Pres {68}	
+ TP new	+ GMO new	ATSF redeems from the pool	+ SP new	✗
+ TP new	+ GMO new	✗	+ SP new	✗
+ TP new	+ GMO new	✗	+ SP new	✗
+ TP new {floated}	✗	✗	+ SP new {floated}	✗
- 1 TP {v90B}	✗	✗	- 1 SP {v64G}	✗
+ FW pool			+ ATSF pool	
✗	✗	✗	✗	Priority for SR6

Cash Flow	b/f	SR5	c/f	Value	%	Certs
John Shelley	452	-428	24	876	22.1	9
Willem Moene	259	-252	7	843	21.2	9
Adam Romoth	134	-76	58	621	15.7	6-7
Lyndon Gurr	296	-266	30	990	24.9	11
Lionel Robbins	79	-72	7	639	16.1	7-8

Portfolio	PCs	ATSF	FW	GMO	IC	MKT	MP	SLSF	SP	SSW	TP
John Shelley	-	-	1	-	-	5P	-	-	-	-	5P
Willem Moene	-	-	-	5P	-	-	6P	-	-	-	-
Adam Romoth	-	6P	-	-	-	-	1	1	-	-	-
Lyndon Gurr	-	1	6P	-	-	-	1	-	5P	-	-
Lionel Robbins	SCC	-	-	-	-	1	-	2P	-	6P	-

Bank (new)	-	-	5	10	2	-	2	4	4	4
Price (par)	100	68	76		72	76	100	68	68	100
Bank (pool)	2	1	-	-	2	2	5	1	-	1
Price (pool)	72E	82F	76D		64H	76F	55I	64G	68F	90B
Company credit	408	31			49	391	0	680	128	1,000
Redeemed shares	1	2			-	-	-	-	-	-
Tokens	1+D	D	2+D	2+D	2+D	1+D	D	3+D	1+D	2+D
Trains	4 3	3 3			4 3	3 3	4		4 4	

Bank cash: 9,187 Certificate limit: 13 Trains: 4 x '5', 3 x '6'...

Current operating order: TP, FW, MP, ATSF, SSW, MKT, SP, SLSF

Titles		Tile number/Availability				Two Operating Rounds between Stock Rounds							
1/1	2/1	3/2	4/4	5/1	6/2	7/9	8/15	9/17	55/1	56/1	57/5	58/3	
69/1	14/-	15/-	16/2	17/2	18/2	19/2	20/2	23/3	24/4	25/3	26/2	27/2	
28/2	29/2	141/2	142/2	143/1	144/1								

1870

Game A32

Referee: Keith Thomasson

Private Companies		Cost	Revenue
1	Great River Shipping Company	\$20	\$5
2	Mississippi River Bridge Company	\$40	\$10
3	The Southern Cattle Company	\$50	\$10
4	The Gulf Shipping Company	\$80	\$15
5	St.Louis San Francisco Railway	\$140	n/a
6	Missouri-Kansas-Texas Railroad	\$160	\$20

Public Companies		
Tokens	Starting City	Destination
ATSF 3	Topeka (B9)	Southwest (N1)
FW 2	Fort Worth (J3)	Denver (A2)
GMO 2	Mobile (M20)	St.Louis (C18)
IC 2	Jackson (K16)	Chicago (A22)
MKT 3	Kansas City (B11)	Southwest (N1)
MP 3	St.Louis (C18)	Dallas (J5)
SLSF 3	Springfield (E12)	Southeast (M22)
SP 3	Southwest (N1)	New Orleans (N17)
SSW 2	Memphis (H17)	Fort Worth (J3)
TP 2	Dallas (J5)	New Orleans (N17)

Orders required for the following rounds	By the early deadline
OR7, OR8	Adjudication can pause between rounds if requested

6 NIMMT! 16

John is proving hard to catch.
Not that anyone wants to...

ROUND 7

Hand 1 (1-104)

86

77

76

73

58

1/9

93

92

91

88

2/8

94

55

54

46

35

3/12

68

51

29

4/3

Hand 2 (1-104)

81

80

79

75

59

1/8

90

2/3

66

3/5

93

77

71

69

68

4/9

Michael (29) takes row 4 for 1 pt, Jim (51), Colin (68), John (86), Bob (91), Kevin (92), Don (93).

Kevin (2) takes row 3 for 2 pts, Jim (31), Michael (41), John (46), Colin (65), Bob (66) takes row 3 for 6 pts, Don (90) takes row 2 for 9 pts.

Hand 3 (1-74)

57

42

1/2

61

59

58

56

55

2/11

66

65

63

62

60

3/12

74

72

71

68

67

4/5

Hand 4 (1-74)

73

72

66

62

40

1/11

68

67

65

60

57

2/8

24

21

19

16

15

3/6

51

48

4/2

Colin (29) takes row 1 for 4 pts, John (31), Don (34), Jim (36), Kevin (39), Bob (42) takes row 1 for 5 pts, Michael (57).

Michael (15) takes row 3 for 4 pts, Bob (16), John (19), Jim (21), Kevin (24), Don (48) takes row 4 for 6 pts, Colin (51).

Player	Hand 1	Hand 2	Hand 3	Hand 4	Overall Score
Michael Graystone	2	0	2	0	4
Jim Reader	15	0	0	0	15
Bob Coull	12	6	1	7	26
Colin Sharpe	12	12	4	0	28
Kevin Lee	5	8	11	20	44
Don Shailer	0	17	17	17	51
John Colledge	11	25	17	11	64

Orders required

Round eight - cards for each hand



7 WONDERS 1

The first Wonder stage is built.

ROUND 3

Age I - Card 3

Mike Reeves

Lyndon Gurr

Jim Reader

Allan Stagg

Pete Campbell

{John Boocock}

Kevin Lee

First Wonder stage

Mine {costs 1 coin}

Altar

Glassworks

Apothecary

Altar

Excavation {costs 1 coin}

The discard pile holds 1 card

Mike	Lyndon	Jim	Allan	Pete	{John}	Kevin
2 coins/3 VP	2 coins/3 VP	3 coins/3 VP	3 coins/2 VP	2 coins/1 VP	8 coins/4 VP	2 coins/-

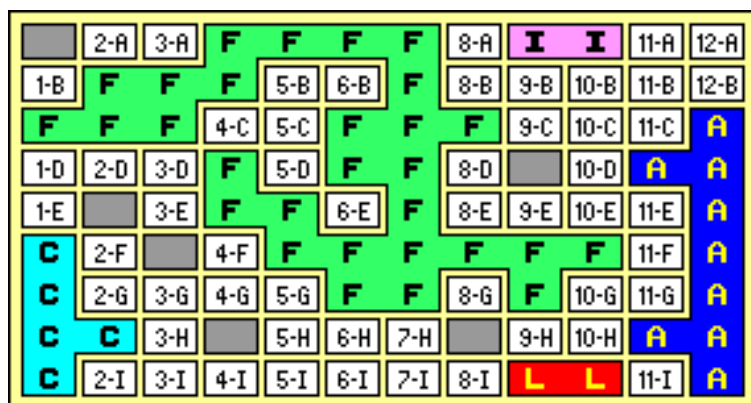


ACQUIRE 58

Festival swallows up
two other chains this time.

ROUND 8

Tony 2-C Forms Worldwide, one free share. Buys 3 Worldwide @ 500.
John 6-G Buys 3 Festival @ 800.
Kevin 6-F Festival takes over Tower, bonuses for Kevin {4,000} and Bob {2,000}, Kevin swaps 10 for 5, sells 2 for 800, Bob retains 7, John retains 3. Buys 1 Luxor @ 200, 1 American @ 700, 1 Continental @ 700.
Michael 11-D Buys 3 American @ 700.
Bob 12-I Buys 3 Continental @ 700.
Tony 3-B Festival takes over Worldwide, bonuses for Michael {5,000} and Tony {2,500}, Tony sells 4 for 2,000, John retains 1, Michael sells 7 for 3,500, Bob retains 1. No purchases.



	Lux	Tow	Ame	Fes	Wor	Con	Imp	Cash	Value
Michael Graystone	2	-	12	-	-	4	-	11,400	31,800
Bob Coull	-	7	4	5	1	5	3	-	21,000
Tony Wilcock	-	-	-	9	-	-	-	7,300	24,400
John Marsden	7	3	7	6	1	-	-	1,300	23,000
Kevin Lee	5	-	1	5	-	4	4	3,200	20,600
Bank Stock	11	15	1	-	23	12	18		
Chain Size	2	-	9	29	-	5	2		
Chain Value	200	-	700	900	-	700	400		

Playing sequence

John, Kevin, Michael, Bob, Tony, John again

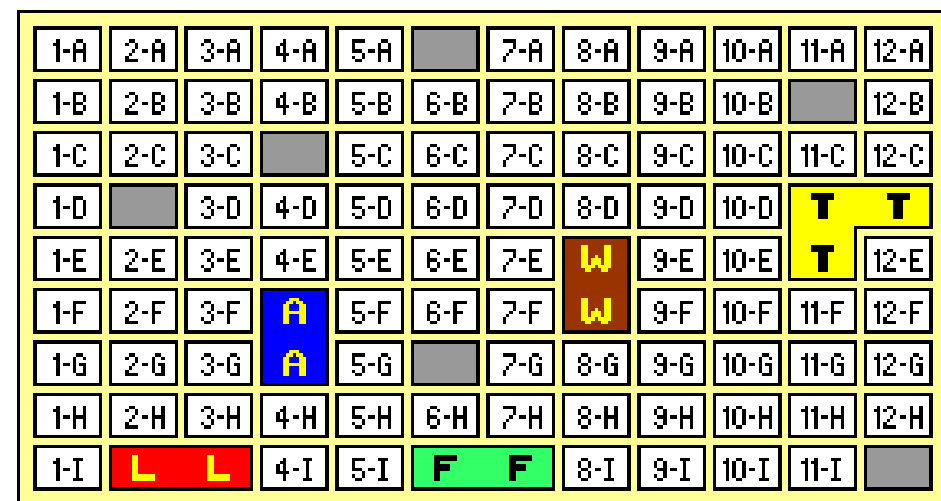


ACQUIRE 59

Two more chain are formed.

ROUND 2

Michael 11-E Buys 3 Luxor @ 200.
John 2-D Buys 3 American @ 300.
Tony 8-E Buys 3 American @ 300.
Colin 6-I Forms Festival, one free share. Buys 3 Festival @ 300.
Lyndon 8-F Forms Worldwide, one free share. Buys 3 Luxor @ 200.
Michael 12-I Buys 3 Luxor @ 200.



	Lux	Tow	Ame	Fes	Wor	Con	Imp	Cash	Value
Lyndon Gurr	6	-	-	-	1	-	-	4,800	11,800
Michael Graystone	10	-	-	-	-	-	-	4,200	8,200
John Colledge	-	4	3	-	-	-	-	4,500	11,900
Tony Wilcock	-	-	3	-	-	-	-	5,100	6,800
Colin Sharpe	-	-	4	4	-	-	-	4,200	14,100
Bank Stock	9	21	15	21	24	25	25		
Chain Size	2	3	2	2	2	-	-		
Chain Value	200	300	300	300	300	-	-		

Playing sequence

John, Colin, Tony, Lyndon, Michael, John again





BATTLE! 4

Your Attribute research order is:
MACPSDERBHX

ROUND 23

Research: None.

New units: 5A (C).

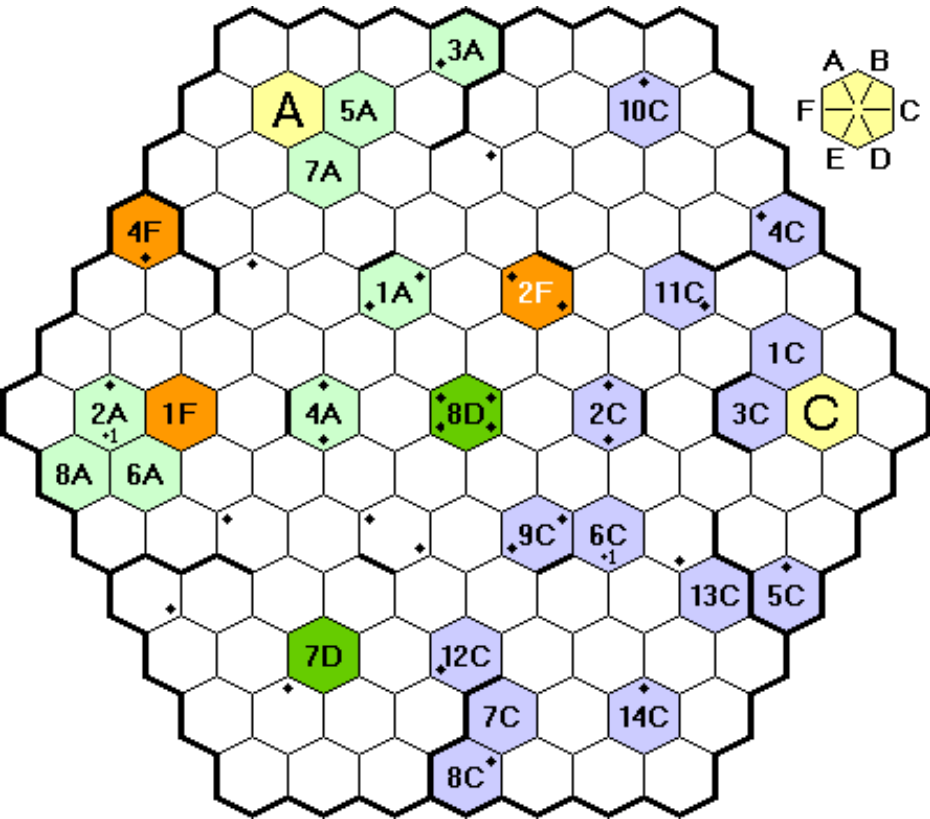
Moves: *Chaos* moves internally, while 2A floats over to sit above the *Free Friends* base.

Combat: 2A⇒F base {6 hits *}, 5A⇒2F {Elite to ignore 3F} {2 hits *}, 6A⇒F Base {4 hits *}, 1F⇒6A {2 Elite vs Defence} {2 hits}. * = destroyed

Builds: 3C builds a wall {F}.

Conversions: 5A converts 7F⇒7A, 7C converts 5D⇒8C.

Team	Research	PP	Units	M	A	C	P	S	D	E	R	B	H
<i>Anon</i> Allan Stagg	No research Level 10	16	♦♦1A	1	4	1	1	1/0	3	2	2	1	
			2A	4	6	0	0	0/0	0	3	2	0	1
			♦♦3A	2	0	0	2						
			♦♦4A	0	1	0	1						
			5A	0	1	1	0	0/0	1	1	3	0	1
			6A	4	4	4	0	0/0	4				
			7A										
			8A	1	1	0	0	1/0					
<i>Blob</i> Steve Ham	Defunct {Sixth}	-	-										
<i>Chaos</i> Marcus Pratt	No research Level 10	22	1C	1	0	2	0	0/0	0	1			
			♦♦2C	2	0	1	0	1/0	2				
			3C	5	6	2	2	1/2	6	4	4	1	1
			♦♦4C	1	0	1	0	1/0	0	0	0	1	
			♦♦5C	2	0	0	2						
			6C	3	5	1	0	0/0	1	2	2	0	1
			7C	2	0	2	0	1/0	0	1			
			♦8C										
			♦♦9C	1									
			♦10C	1									
			♦11C	0	0	0	0	0/0	1				
			♦12C										
			13C	1									
			♦14C	1									
<i>Dynamo</i> Mark Stretch	Defunct {Fourth=}	-	7D										
			♦♦♦♦8D	0	1								
<i>Elp</i> Michael Graystone	Defunct {Fourth=}	-											
<i>Free Friends</i> John Marsden	Defunct {Third}	-	1F	1	5	0	0	0/0	2	2			
			♦4F	1									



The departure of *Free Friends* leaves *Anon* to fight it out against *Chaos*. One of them might put forward a game-end proposal, of course, but they may well prefer to see it through to the finish.

Orders required

Attribute order: MACPSDERBHX

Production, Moves, Combat, Build and Conversion for round twenty four



BATTLE! 5

Your Attribute research order is:
AMECSBDRPHX

ROUND 4

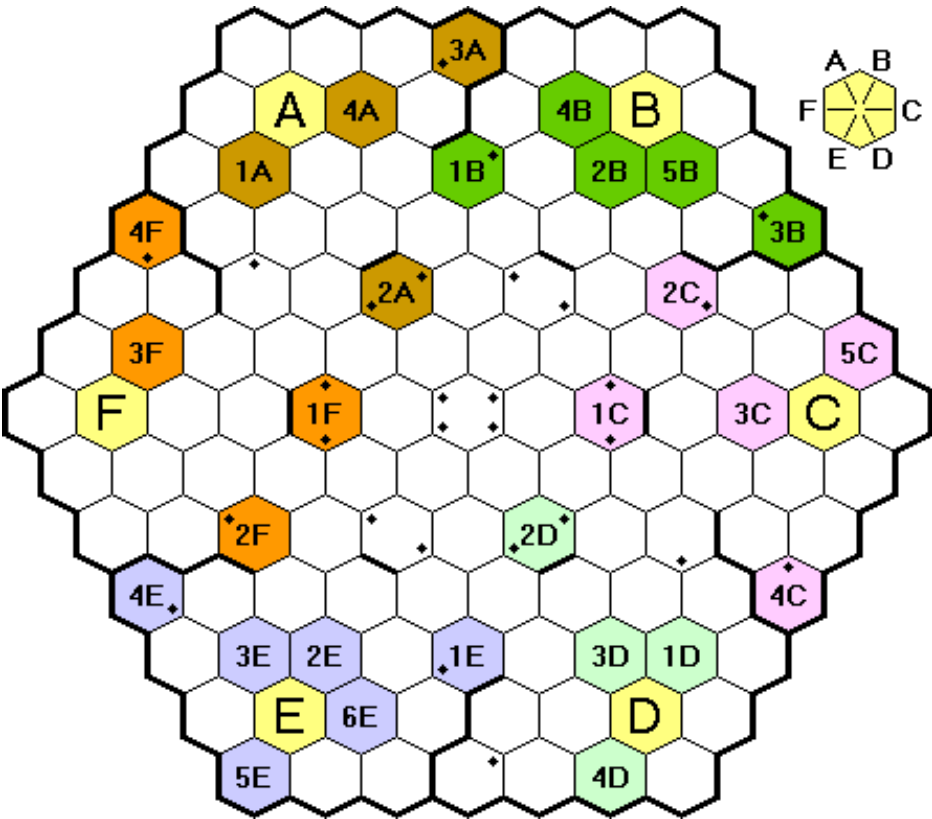
Research: Everyone researches their next available attribute.

New units: 4A {C}, 5B {D}, 4D {E}, 3F {B}.

Moves: There are no collisions this time, although some units got close to each other.

Combat: None.

Team	Research	PP	Units	A	M	E	C	S	B	D	R	P	H
Apache Pete Campbell	+Elite Level 3	13	1A	1	2								
			♦♦2A	2	2								
			♦3A	1	2								
			4A										
Banzai Mark Stretch	+Conversion Level 4	12	♦1B	1	1								
			2B	2									
			♦3B	1	1								
			4B	1	1								
Conflux Steve Ham	+Conversion Level 4	14	♦♦1C	1	2								
			♦2C	1	2								
			3C	1	1	1							
			♦4C	0	2								
Dream Team Allan Stagg	+Conversion Level 4	12	1D	1									
			♦♦2D	3	3	1							
			3D	1	1								
			4D										
Effalump Marcus Pratt	+Elite Level 3	13	♦1E	2	2								
			2E	2									
			3E	2									
			♦4E	0	2								
Frogs John Marsden	+ Elite Level 3	13	♦♦1F	1	2								
			2F	1	2								
			3F	1									
			♦4F	0	1								



Orders required	Attribute order: AMECSBDRPHX
Production, Moves and Combat for round five	



BREAKING AWAY 21

One breakaway,
one following train.

ROUND 11

Pos	Riders	New
97	Magrat Garlick	7
96	-	
95	-	
94	-	
93	-	
92	-	
91	-	
90	Conshohocken	3
89	Suquehanna	4
88	Block Hazz Wiggy Givens Makes-Things	5
87	Granny Weatherwax Catasauqua	10
86	Red Fur Nanny Ogg	12
85	Healer Silver Fur Agnes Nitt	14
84	Scudder Leonard	15
83	Kudov	15
82	Yatesy Boardy	15
81	Mitre	15

Dennis Frank (8)		<i>Fuzzy Riders:</i>			
A	Red Fur (3)	3	4	12	14
B	Healer	5	14	15	
C	Silver Fur	3	4	14	
D	Makes-Things (5)	3	3	5	
Jim Reader (19)		<i>Team Lenape:</i>			
A	Catasauqua (6)	3	3	7	10
B	Conshohocken (5)	3	4	5	
C	Tamaqua	Dropped:			
D	Suquehanna (8)	3	3	4	
Mike Reeves		<i>HasBeens:</i>			
A	Yatesy	3	3	6	15
B	Boardy	3	3	15	
C	Wiggy	3	3	5	
D	Liggy	Dropped:			
Allan Stagg (25)		<i>Beans:</i>			
A	Mitre (10)	3	5	15	
B	Kudov (8)	3	4	15	
C	Hazz (7)	3	5	5	
D	Human	Dropped:			
Mark Stretch (1)		<i>Witches Abroad:</i>			
A	Granny Weatherwax (1)	3	10	10	15
B	Nanny Ogg	6	12	15	
C	Magrat Garlick	5	7	11	
D	Agnes Nitt	3	4	14	
Rob Thomasson (25)		<i>Hard Boiled:</i>			
A	Block (4)	5	8	9	
B	Scudder (6)	3	8	15	
C	Leonard (10)	8	14	15	
D	Givens (5)	3	5	14	



Magrat Garlick breaks away, but may find that it has taken too much effort for the reward it brings.

Further back, maximum cards are the reward for everyone coming together into one big train.

Orders required

Cards for round twelve



BUS BOSS 329-FRA

One solo for the leader.
He doesn't need it.

ROUND 12

France

Round 12 Runs

19	Q♦ Brest 8♠ Marseille
45	5♣ Rouen 10♦ Nantes
46	J♣ Dunkerque 6♠ Grenoble
47	5♦ Toulouse 9♠ Marseille
48	5♥ Reims A♠ Switzerland
49	7♣ Dieppe 10♠ Narbonne
50	2♥ Paris 6♦ Bordeaux
51	4♠ Clermont Ferrand J♥ Strasbourg
52	8♦ Limoges 2♠ Lyon

		LIFT	GRUB	MARS	JAUNE	FROG	
①	LIFT	16					15
②	GRUBBY	7	+9/-8				17
②	MARS	7		-9	+9		-2
①	MARS	16	+4				20
②	GRUBBY	7					7
②	LIFT	7			-4		3
①	FROGGIE	15		+3			18
①	GRUBBY	15				-3	12
①	JAUNE	20			-5		15
②	FROGGIE	10					10
✕	MARS				+5		5
①	FROGGIE	30					30
①	MARS	20					20
②	FROGGIE	10					10
①	JAUNE	13					13
②	MARS	7		-5			2
②	GRUBBY	6	-7		+5		4
④	LIFT	4		+7			11
①	FROGGIE	20		-4			16
②	LIFT	10				-3	7
✕	GRUBBY					+4	4
✕	JAUNE		+3				3
①	LIFT	13		+5			18
①	GRUBBY	12	-5			+4	11
③	JAUNE	5		-4			1

Scores

	Runs:	19	45	46	47	48	49	50	51	52	Score
FROGGIE	310	-	-	18	10	30	10	-	16	-	394
GRUBBY	286	17	7	12	-	-	-	4	4	11	341
LIFT	245	15	3	-	-	-	-	11	7	18	299
MARS	194	-2	20	-	5	-	20	2	-	-	239
JAUNE	166	-	-	-	15	-	-	13	3	1	198

Congratulations to FROGGIE on the win, well clear of the rest.

1st	Colin Sharpe	FROGGIE	394
2nd	Michael Graystone	GRUBBY	341
3rd	Bob Coull	LIFT	299
4th	John Marsden	MARS	239
5th	Jim Reader	JAUNE	198

We will round up next time. Comments please.



Bus Boss 331-SCT

TABS and OMR
have good rounds.

ROUND 8

Scotland

Round 8 Runs

			SCAM	BUM	TABS	OMR	SLOB	
4	3♠ Ballater 6♥ Kirkcaldy	① SLOB 30						30
10	K♣ Glasgow J♦ Edinburgh	① TABS 13 ① SLOB 12 ③ OMR 5						13 12 5
14	K♦ Edinburgh A♠ Peterhead	① OMR 20 ② TABS 10			-5	+5		15 15
15	7♦ Galashiels 4♠ Elgin	① OMR 30 ✕ SLOB				+5	-5	25 5
16	Q♣ Glasgow Q♠ Inverness	① SCAM 20 ② BUM 10 ✕ SLOB	-2	+2				20 8 2
17	Q♦ Edinburgh 2♠ Fraserburgh	① TABS 15 ① OMR 15			-8	+8		23 7

Pete, when you have a run that you do not specify any details for, it would be appreciated if you could list the start and finish towns. This time you listed your only run as number 17, but it became obvious it was actually meant to be number 16. Having the towns listed helps me to figure out what might be going on.

Round 8 Routes

Scottish Antiquated Motors (SCAM) (Pete Campbell, Blue)

Kelso - Berwick-Upon-Tweed, Perth - Dundee (12)

Scotland's Local Operators' Buses (SLOB) (Roger Trethewey, Black)

Arbroath - Aberdeen (10)

One Man's Routes (OMR) (Mark Stretch, Red)

Dumfries - Galashiels (12)

Tartan Army Bus Services (TABS) (Don Shailer, Purple)

Kilmarnock - Dumfries (11)

Bloody Useless Management (BUM) (Jim Reader, Yellow)

Fort William - Aviemore (13)

	Runs:	4	10	14	15	16	17	Routes	Score
TABS	71	-	13	15	-	-	23	-11	111
OMR	70	-	5	15	25	-	7	-12	110
SLOB	50	30	12	-	5	2	-	-10	89
BUM	87	-	-	-	-	8	-	-13	82
SCAM	27	-	-	-	-	20	-	-12	35

Round 8 Runs

9.	4♥ - 6♦	Stirling to Berwick-on-Tweed	
11.	9♣ - 7♥	Newton Stewart to Perth	(not yet available)
12.	10♠ - 5♣	Oban to Kilmarnock	(not yet available)
13.	7♠ - A♣	Kyle of Lochalsh to Dumbarton	(not yet available)
18.	5♦ - 10♣	Kelso to Dumfries	
19.	8♥ - 8♦	Forfar to Peebles	(not yet available)
20.	6♠ - 8♣	Aviemore to Stranraer	
21.	A♦ - A♥	England to Motherwell	
22.	3♦ - 9♠	Gretna to Fort William	
23.	9♥ - 5♠	Arbroath to Nairn	
24.	9♦ - 2♥	Dunbar to Coatbridge	
25.	8♠ - 10♥	Mallaig to Dundee	(not yet available)
26.	4♣ - 5♥	Ardrossan to Dunfermline	

Runs	Routes
Enter up to 5	Buy in the order Pete, Jim, Roger, Mark, Don



Bus Boss 333-CRO

Just one more round of
route buying after this.

ROUND 5

Croydon

Tooting Enterprises Are Rampant (TEAR) (Kevin Lee, Green)

Central Croydon - Addington Village 53 - 9 ... 44

Bus Routes Across Croydon Eventually (BRACE) (Pete Campbell, Blue)

Addington Village - Selsdon, Crystal Palace - Tulse Hill 55 - 10 ... 45

Croydon Access Routes (CAR) (Bob Coull, Black)

Whyteleafe - Warlingham, Carshalton Ponds - Carshalton,
Thornton Heath Pond - Thornton 54 - 12 ... 42

Bloody Useless Management (BUM) (Jim Reader, Yellow)

Carshalton Ponds - Morden - Wimbledon & Merton 53 - 11 ... 42

Graystone Relies on Ugly Brown Buses Yet-again (GRUBBY) (Michael Graystone, Brown)

Mitcham - Colliers Wood, Mitcham - Carshalton 54 - 12 ... 42

Bob, your first selection was not taken because it actually cost 13.

Routes
Buy in the order Pete, Bob, Jim, Michael, Kevin



HOMESTEADERS 1

Both depots are built.

ROUND 5

Worker Allocation				
Michael	2	Homestead {W}	Farm {F}	
Howard	3	Homestead {W}	Farm {T\$}	Foundry {S}
Rob	2	Market {\$}	Gold Mine {G}	

Income and Payroll												
Michael	Gains \$2	W T F	Pays \$2 for 2 workers									
Howard	Gains \$5	W T S	Pays \$3 for 3 workers - Sells S for \$\$\$VP									
Rob	Gains \$5	T G	Pays \$2 for 2 workers									

Auctions			Auction 1 (C and Worker) : Auction 2 (I or C)		
Michael	Howard	Rob			
Pass to Railroad Track	\$5 on Auction 1	\$3 on Auction 2			
Gains an income token					

Building												
Howard	Builds a depot {WS} - advances on the Railroad Track, gains an Income token											
Rob	Takes a debt token, Buys S for T\$\$\$, builds a Depot {WS} - advances on the Railroad Track, gains a Worker											
Michael	TF to gain a Worker											

Resources												
	\$	Wrk	W	F	S	G	C	L	Debt	T	Inc	VPs
Rob Thomasson	-	3	-	-	-	1	-	-	1	-	1	5
Michael Longdin	3	3	1	-	-	-	-	-	-	3	1	2
Howard Bishop	1	4	1	-	-	-	-	-	-	1	2	3

	RT	ML	HB	Income								
Homestead	✓	✓	✓	\$\$ {Wood} {VP}								
Farm	-	✓	✓	{Trade token + \$\$} {Food}								
Market	✓	✓	-	Trade token {\$}								
Depot	✓	-	✓	\$\$ <Railroad Track advance> (End: 1 VP per Inc)								
Foundry	-	-	✓	{S}								
Gold Mine	✓	-	-	{G}								

Auction 1			Auction 2			Auction 3			Your sixth auction set gives you the option of Residential with a Worker, or the choice between Residential or Special.
R and Worker			R or S			-			
3	4	5	6	7	9	12	16	21	

The winner of Auction 2 may also spend one Wood to gain an Income token (once only).

These are the buildings available during the Town period, which lasts for rounds five to eight.

	VPs	Cost	Income	Special
Settlement/Town				
Boarding House {1}	-	WW	\$\$	<-1 Debt> (End: 1 VP per I)
Railworker's House {1}	-	SS	T \$	(End: 1 VP per Wrk/Inc)
Ranch {2}	-	WFS	{L}	<T>
General Store {2}	2	S	T	(+\$ per sale)
Trading Post {1}	-	G	TT	
Copper Mine {2}	-	WWS	{C}	
Gold Mine {1}	-	WS	{G}	
River Port {2}	-	W	{G}	(Use G for C or L)

Town				
Church {1}	10	WSGC	VP VP	
Workshop {2}	2	S	VP	<Gain a worker>
Bank {1}	3	WC	Clear 1 debt	(T⇒\$ at any time) (End: 1 VP per Special)
Stables {1}	1	L	T VP	(End: 1 VP per Residential)
Forge {2}	1	SS	{VP VP}	(1 VP per new building)
Meatpacking Plant {1}	2	WL	{VP VP} {VP VP}	
Factory {1}	6	SSC	VP VP	(End: 1 VP per Industrial)
Fairgrounds {1}	6	WWCL	G	(End: 1 VP per Residential)
Lawyer {1}	4	WGL	VP VP	(Tied bids win auctions) (End: 1 VP per Commercial)
Rodeo {1}	4	FL	\$ per worker	

Residential	The number of each building is in {braces} to the right of the building name. Income shown in {braces} requires a worker. {{Double braces}} requires two workers. <Chevrons> indicate something that happens when the building is built.
Commercial	
Industrial	
Special	

Orders required
Allocate workers, income, bidding and building - bidding starts with Howard



BUS BOSS 335-GMY

FROGGIE is re-registered
at bus company's house.

ROUND 2

Germany and France fall out over the bus company name, and despite French backing, the bus company is more German than French, and at Germany's insistence, FROGGIE is to be renamed Hamburg Upper Network ('Upper' as opposed to 'Underground').

Germany

Over Deutschland Express (ODE) (John Marsden, Yellow)

Plauen - Leipzig, Regensburg - München 88 - 12 . . . 76

Hamburg Upper Network (HUN) (Colin Sharpe, Red)

Kassel - Hanover, Würzburg - Nürnberg 88 - 12 . . . 76

German Buses Rule (GBR) (Roger Trethewey, Blue)

Hamburg - Bremen - Osnabrück 90 - 11 . . . 79

Buses Around Germany (BAG) (Bob Coull, Green)

Erfurt - Leipzig, Köln - Düsseldorf - Duisburg 87 - 12 . . . 75

Busreisen Überall Schnell (BUS) (Mike Reeves, Black)

Berlin - Dresden - Czechoslovakia 89 - 12 . . . 77

Routes

Buy in the order Colin, Roger, Bob, Mike, John



OUTPOST 29

Pete, man/robot No.12 was
working on your Moon Base.

ROUND 16

Commander Actions

Lyndon Auctioned an Outpost for 100. Willem joined at 101, Jim at 102. Willem dropped out at 112, Lyndon at 127. Jim got it for 127 reduced to 112 after Heavy Equipment discounts (w:4,6,7,7,8,9 r:9 n:16,20,26) plus a free Titanium Factory

- ▶ Auctioned a Space Station for 120 and got it (w:6,6,7 t:11,13,44 r:16 m:17)
- ▶ Bought four Population Units (om:30)

Mark Auctioned a Planetary Cruiser for 160 and got it (w:30 t:13,44,44 ro:40)

- ▶ Bought one Population Unit (o:2,3 w:5)
- ▶ Bought one Titanium Factory (m:18,18)

Pete Auctioned a Moon Base for 200. Marcus joined at 201. Pete dropped out at 201. Marcus got it for 201 (w:4,30,30 n:88 mo:50)

- ▶ Auctioned a Moon Base for 200 and got it (w:8 r:11,12,14,14,17 m:20 n:16,16,22,24,26)

Marcus Bought one Population Unit (r:11)

Willem Auctioned an Outpost for 100 and got it reduced to 90 after Ecoplants discounts (w:6,6,6,7 r:10,12,13,13,13,14) plus a free Titanium Factory

- ▶ Bought two Population Units (w:10)

Jim Bought two Robots (o:1,2 t:7,10)

John Passed

PO	Name	Factories	Population	Robots	Production
1	Lyndon	2o,4w,6t	14 (15)	0 (0)	2o,1W,2t,1T,1r,3m,2om (224,15)
2	Pete	2o,5w,3r,3n	8 (10)	4 (8)	2W,3r,1m,3n,3mo (326,15)
3	Marcus	2o,4w,2t,4n	12 (15)	0 (0)	1W,4t,4r,1N,2mo (310,20)
4	Mark	2o,4w,10t	10 (12)	6 (10)	4w,10t,2m,2ro (242,20)
5	Willem	2o,5w,1t,2r	7 (10)	1 (7)	5w,1t,5r (110,20)
6	Jim	2o,4w,2t,1r,2n	8 (13)	3 (8)	2o,4w,2t,1r,2n (107,20)
7	John	2o,4w,5t	8 (8)	1 (8)	6t,1T (104,10)

PO	Name	Colony Cards	Victory Points
1	Lyndon	HE, Nod, Sci, OL, OL, Eco, Eco, Eco, Eco, OP, SS, SS	74 (655)
2	Pete	WH, Nod, OL, Rob, Lab, MB, MB	73 (630)
3	Marcus	WH, HE, Nod, Sci, OP, MB, MB	71 (620)
4	Mark	WH, HE, OL, OL, Rob, OP, PC, PC	70 (625)
5	Willem	DL, DL, DL, DL, WH, Sci, Sci, Sci, Rob, Lab, Lab, Eco, OP	45 (545)
6	Jim	WH, HE, Nod, Rob, Lab, OP	35 (310)
7	John	DL, HE, Nod, Rob	21 (120)

Data Library	0	Sold out	Laboratory	1	(none left)
Warehouse	0	Sold out	Ecoplants	0	Sold out
Heavy Equipment	0	Sold out	Outpost	0	Sold out
Nodule	0	Sold out	Space Station	3	(none left)
Scientists	0	Sold out	Planetary Cruiser	3	(none left)
Orbital Lab	0	Sold out	Moon Base	0	(1 more)
Robots	0	Sold out			

Orders required

Round seventeen auctions, bids and purchases





RAILWAY RIVALS 2178-MA

No change in the
score table order.

ROUND 11

Roger was wondering why MIST did not pay RAM for both ends of the journey in run 25 last time. It is because MIST has built through V5, one of the north west sights hexes, and all the way to Marfa Point. I'm guessing that is missing from your map.

Malta

Round 11 Runs

			RAM	MIST	BUM	OMR	MR	
29	46 Hamrun 66 Naxxar	① MIST 20 ② BUM 10 ✕ RAM	-1	-1 +1	+1			20 9 1
30	41 Gzira 22 Zabbar	① RAM 16 ② OMR 7 ② MR 7				+2/-3	+3/-2	16 8 6
31	53 Bugibba 33 Siggiewi	① MIST 20 ② BUM 10 ✕ MR			+6		-6	20 4 6
32	21 Birzebbuga ⚡6 Ancient sights	① MIST 20 ② MR 10 ✕ BUM		+6	-1		-6 +1	14 15 1
33	31 Zurrieq 14 Sliema	① RAM 11 ② OMR 6 ② MR 6 ④ BUM 4 ④ MIST 3	-3	+1	-1 -2	+1	+3 +2	14 5 1 8 2
34	16 Three Cities 63 Imdina	① BUM 13 ② OMR 6 ② RAM 6 ② MR 5 ✕ MIST			+7	-7		6 13 6 2 3
35	51 Mellieha ⚡5 Western sights	① RAM 20 ② OMR 10 ✕ MIST		-1		+1	+3	20 9 1

Builds

Rails Across Malta (RAM) (Pete Campbell, Blue)

None.

Maltese Island Sunny Transport (MIST) (Bob Coull, Purple)

None.

Bloody Useless Management (BUM) (Jim Reader, Yellow)

None.

One Man's Railways (OMR) (Mark Stretch, Red)

None.

Maltese Rails (MR) (Roger Trethewey, Black)

None.

Scores

	Runs:	29	30	31	32	33	34	35	Builds	Score
MIST	261	20	-	20	14	2	3	1	-	321
MR	254	-	6	6	15	1	2	-	-	284
RAM	194	1	16	-	-	14	6	20	-	251
OMR	191	-	8	-	-	5	13	9	-	226
BUM	175	9	-	4	1	8	6	-	-	203

Round 12 Runs

36. 34 - 42 Zebbug to Imsida
 37. 15 - 56 Sliema to Ghajn Tuffieha
 38. 64 - 52 Dingli to St.Pawl
 39. 43 - ⚡4 Birkirkara to Airport
 40. 61 - 25 Rabat to Zejtun
 41. 35 - 23 Attard to Marsaskala
 42. 12 - ⚡2 Valletta to Southern sights

Runs

Enter up to 4



RAILWAY RIVALS 2194-MN

I made sure to run
this one in daylight!

ROUND 6

Minnesota

[15 points for these builds]

Graystone Railways Entertain Another Territory (GREAT) (Michael Graystone, Brown)

Eveleth - H64 - Ely, C51 - D51 - Bemidji, B52 - Cass Lake, F21 - Austin - A21.

32 +3 (towns) +1 (HEART) +2 (FEAR) +3/-5 (BUM) = 36

Ham's Engines Are Rubbish Timberwolves (HEART) (Steve Ham, Purple)

R13 - L10, H8 - E7, C61 - D61, U4 - U3 - S2.

49 -1 (GREAT) +2/-1 (FEAR) -1 (MARS) -1 (BUM) = 47

Fairmont Railways Are Rampant (FEAR) (Kevin Lee, Red)

G23 - F23 - F24 - C26 - C27, Mankato - C17 - Albert Lea, K13 - N14 - O14 - St.Cloud.

43 -2 (GREAT) +1/-2 (HEART) +1 (BUM) = 41

Making Alternative Routes Superior (MARS) (John Marsden, Green)

Granite Falls - K7 - Appleton, International Falls - M55 - O54 - O50 - Warroad, G16 - Mankato.

62 +6 (towns) = 68

Bloody Useless Management (BUM) (Jim Reader, Yellow)

K18 - E21 - Rochester, E21 - Austin, N16 - P17.

61 +3 (towns) +5/-3 (GREAT) +1 (HEART) -1 (FEAR) = 66

Round 7 Runs

1.	54 - 42	Fargo to St.Cloud
2.	25 - 15	Albert Lea/Austin to St.Paul
3.	55 - 13	Bemidji to Minneapolis
4.	65 - 63	Forest Center/Virginia to South Dakota
5.	66 - 34	Ely/International Falls to Granite Falls/New Ulm
6.	43 - 24	Little Falls/Moose Lake to La Crosse
7.	32 - 65	Pipestone/Worthington to Canada

While rolling up the runs I realised I had not put a name to town 46 north east of Duluth. This is Two Harbors.

Runs	Builds
Enter up to 4	Up to 10 points excluding payments to rivals



RAILWAY RIVALS 2205-M

The first line reaches London.

ROUND 3

BALL reached Bedford ahead of ODE by one point, so he should be getting the full 6 points rather than having them shared.

London & Midlands {14 points for these builds}
Birmingham and London Link (BALL) (Bob Coull, Black)
D53 - C52 - Luton - C47 - Watford, B47 - B44 - C43 - London.
41 +3 (adjustment) +18 (towns) = 62

One Dark Engine (ODE) (John Marsden, Green)
C54 - B54 - A54, F56 - Cambridge, J62 - Peterborough - N64 - Spalding, M74 - Lincoln.
35 -3 (adjustment) +18 (towns) +1 (DRAB) = 51

Bloody Useless Management (BUM) (Jim Reader, Yellow)
G24 - L22 - L15 - N14.
51 -1 (COLIN) = 50

Don's Railways Across Britain (DRAB) (Don Shailer, Orange)
C75 - D75 - Nottingham, E60 - J63 - Peterborough - N64 - Spalding, Burton - I33.
32 +12 (towns) -1 (ODE) = 43

Coventry, Oxford, London Internal Network (COLIN) (Colin Sharpe, Blue)
I15 - Oxford, I13 - I11 - Aylesbury - J9 - K8 - K6.
37 +12 (towns) +1 (BUM) = 50

DRAB's orders were to build to Nottinghamshire rather than the town. In case you were hoping, there are no extra points for building to an entire county.

Builds
Up to 14 points excluding payments to rivals



RAILWAY RIVALS 2206-NE

The Big Apple is popular.

SET UP

New England		
Player/Colour	Start	Railroad
Pete Campbell Blue	Boston	Railways In New England (RINE)
Michael Graystone Brown	Manhattan	Graystone Railways Entertain Another Territory (GREAT)
Steve Ham Purple	Boston	Ham's Engines Are Rather Terrific (HEART)
Mike Reeves Green	Portland	Reeve's Rapid Railroad (RRR)
Roger Trethewey Black	Manhattan	America On Line (AOL)

Four people wanted to start from Manhattan, and all four had Boston as their second choice, so the dice decided.

We came into Boston's South Station late at night on our train from Chicago. It was too late to look around, although we got a better look later on. It is a shadow of what it once was, apparently, but what remains is very impressive. Back in the 70s/80s the city decided it would cost too much to renovate and planned to knock it down. They received three calls from one person asking them to reconsider, and they did. That person was Jackie Onassis.

Builds
Up to 15 points excluding payments to rivals



Boston's South Station

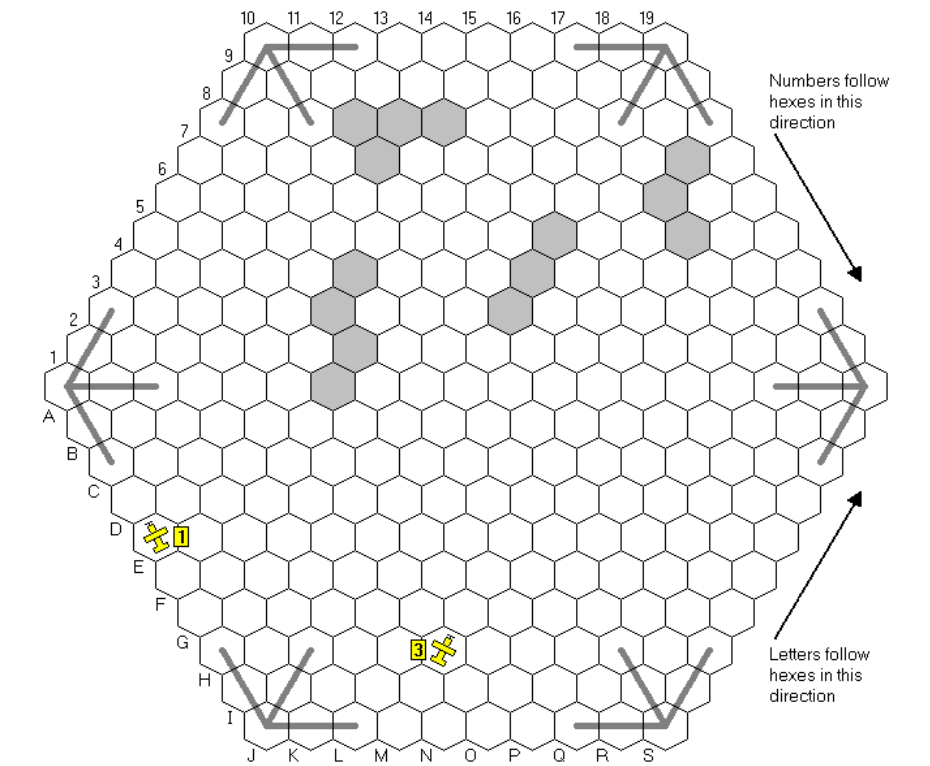


SOPWITH T353FW

And they split...

ROUND 21

Pilot	Starts	Moves	Ends	A:D:P
1 <i>The Brown Baron</i> ♠ Michael Graystone	G1-NW	A, A, A (2 kills) {Airfield: A1}	E1-NW	06:11:36
3 <i>Wizard Prang</i> Jim Reader	K3-SW	LT, LT, LT {Airfield: J19}	M6-NE	13:10:00



The clouds moved north east. The two remaining pilots split, possibly both with the same idea of topping up their guns before the final challenge. If this is true, you are welcome to submit orders for multiple turns to speed things up.



NEWS FROM THE ROCK

www.fwtwr.com/fwtwr/



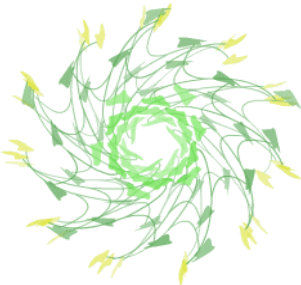
This is the section that provides news of the Internet sibling of this zine.

- ✧ Here are the current web ratings for active players with a rating of 2 or more. People are included if they have competed five or more games.
- Ken Boucher 3.387
- ▼ Per Hallberg 3.261
- ▼ Pete Campbell 2.793
- ▼ David Hilbert 2.744
- Rob Thomasson 2.611
- ▼ Victor Cronshaw 2.444
- ▲ John Boocock 2.280
- ▲ Michael Graystone 2.211
- ▲ John Colledge 2.108
- ▲ Mick Haytack 2.097

The rating system is:
5 points for a win
3 points for second
1 point for third

- ✧ Completed games and winners:
Saint Petersburg e947 (Banquet) John Boocock
Carcassonne e972 John Colledge

- ✧ New games and start dates:
None, although a few are planned for launch once this issue of the zine is done.



PREVIEW

As promised, there were no new games in this issue, and there is no specific target for when the next game will start.



The only full lists have issues that I need to resolve before they can launch. A few games have enough names on the list to be started, although I will see how much time is available before I kick any of those off.

I have to admit I am happy cruising along at the moment.



ZINES RECEIVED

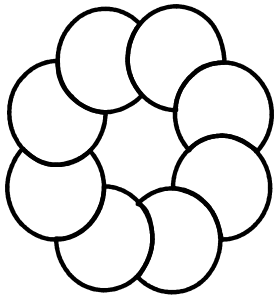
A summary of zines that I've received recently.

Date	Zine/Issue
Aug 7	Ode 333
Aug 13	Minstrel 362
Aug 28	Fury of the Northmen 12
Aug 29	...mais n'est-ce pas la gare? 133

RATINGS

This is the list of subscribers with a rating of 2 or more. People are included if they have completed five or more games.

-	David Smith	3.478	The rating system is:
▲	Lyndon Gurr	3.403	
▼	Tony Bromley	3.364	
▼	Pete Campbell	3.214	5 points for a win
-	Marcus Pratt	2.833	3 points for second
▲	Mark Frueh	2.800	1 point for third
-	Lionel Robbins	2.727	
-	Steve Thomas	2.611	
-	Tony Robbins	2.318	
▲	Michael Graystone	2.309	
-	Stephen Webb	2.226	
-	Rob Thomasson	2.225	
▼	Bob Coull	2.019	
▲	Colin Sharpe	2.012	



WHO PLAYS WHAT

Howard Bishop	... HS1	Marcus Pratt	... Bat4, Bat5, OP29
Pete Campbell	... 7W1, 1829-A30, 1861-F31, 1861-E33, 1870-N29, Bat5, BB-331-SCT, BB-333-CRO, OP29, RR2178-MA, RR-2206-NE	Jim Reader	... 6n16, 7W1, BA21, BB-329-FRA, BB-331-SCT, BB-333-CRO, OP29, RR-2178-MA, RR-2194-MN, RR-2205-M, Sop353
John Colledge	... 6n16, Acq59	Mike Reeves	... 7W1, BA21, BB-335-GMY, RR-2206-NE
Bob Coull	... 6n16, Acq58, BB-329-FRA, BB-333-CRO, BB-335-GMY, RR-2178-MA, RR-2205-M	Lionel Robbins	... 1825-X31, 1829-A30, 1861-F31, 1870-A32
Dennis Frank	... BA21	Adam Romoth	... 1830-S32, 1856-E31, 1870-A32
Mark Frueh	... 1856-E31, 1870-N29	Don Shailer	... 6n16, BB-331-SCT, RR-2205-M
Michael Graystone	... 6n16, Acq58, Acq59, BB-329-FRA, BB-333-CRO, RR-2194-MN, RR-2206-NE, Sop353	Colin Sharpe	... 6n16, Acq59, BB-329-FRA, BB-335-GMY, RR-2205-M
Lyndon Gurr	... 7W1, 1861-F31, 1861-E33, 1870-N29, 1870-A32, Acq59, OP29	John Shelley	... 1825-X31, 1829-A30, 1830-S32, 1856-E31, 1861-E33, 1870-A32
Steve Ham	... Bat5, RR-2194-MN, RR-2206-NE	Don Smith	... 1830-S32, 1856-E31, 1861-F31, 1861-E33, 1870-N29
Mike Hutton	... 1825-X31, 1861-E33	Allan Staggs	... 7W1, Bat4, Bat5, BA21
Kevin Lee	... 7W1, 6n16, Acq58, BB-333-CRO, RR-2194-MN	Mark Stretch	... Bat5, BA21, BB-331-SCT, OP29, RR-2178-MA
Michael Longdin	... HS1	Rob Thomasson	... 1829-A30, 1856-E31, BA21, HS1
John Marsden	... Acq58, Bat4, Bat5, BB-329-FRA, BB-335-GMY, RR-2194-MN, RR-2205-M	Roger Trethewey	... BB-331-SCT, BB-335-GMY, RR-2178-MA, RR-2206-NE
Willem Moene	... 1825-X31, 1830-S32, 1861-F31, 1870-N29, 1870-A32, OP29	Tony Wilcock	... Acq58, Acq59



OUTSIDE EDGE

FOR WHOM THE DIE ROLLS is brought to you by:
Keith Thomasson, 14 Stepnells, Marsworth, Near Tring, Herts, HP23 4NQ

CONTENTS

◇ Games ◇



◇ Current ◇

1825-X31	4	Bus Boss 331-SCT	30
1829-A30 {South}	6	Bus Boss 333-CRO	31
1830-S32	8	Bus Boss 335-GMY	34
1856-E31	10	Homesteaders 1	32
1861-F31	12	Outpost 29	34
1861-E33	14	Railway Rivals 2178-MA	36
1870-M29	16	Railway Rivals 2194-MN	37
1870-A32	18	Railway Rivals 2205-M	38
6 nimmt! 16	20	Railway Rivals 2206-NE	39
7 Wonders 1	21	Sopwith T353FW	40
Acquire 58	22		
Acquire 59	23	◇ Bits and Bobs ◇	
Battle! 4	24	Deadlines	Below
Battle! 5	26	News from the Rock	41
Breaking Away 21	28	Preview	42
Bus Boss 329-FRA	29	Ratings	42
		Waiting Lists	2
		Who Plays What	43
		Zines Received	42

DEADLINES

Wednesday September 26th 2012
18xx games - Friday September 21st

Future deadlines: 18xx games: November 2nd Other games: November 7th

E-mail orders must be sent as plain text messages. Do not send as e-mail attachments.
Unreadable submissions may be treated as No Move Received.