

FOR WHOM THE DIE ROLLS

October 2009

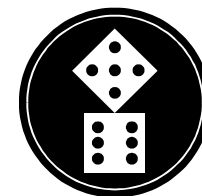
Published by Keith Thomasson

Issue 168

This page has been added to the PDF copy so that reports that appear on facing pages in the paper copy are shown side-by-side.



£2.00



INSIDE STORY

This is FOR WHOM THE DIE ROLLS #168, a game playing magazine for game players, published by Keith Thomasson, 14 Stepnells, Marsworth, Near Tring, Herts, HP23 4NQ. This issue costs £2.00 (including postage).

E-mail: Keith@Thomasson.com

Web site: www.fwtwr.com

Subscription payments can be sent via PayPal to Keith@Thomasson.com

Please specify the currency for international payments as GBP

WAIT

① means that number of players needed. ⇨③ means up to that number needed. ⇨ means there is no limit. ⚡ means a list is full.

Games starting in this issue...

1856 Lyndon Gurr, Willem Moene, John Shelley, Don Smith, Rob Thomasson
18GA Mike Head, Don Smith, Mark Stretch
Puerto Rico Kevin Lee, Willem Moene, Jim Reader, Stephen Webb

Games starting in the next issue...

⚡ Bus Boss Colin Sharpe, Kevin Lee, John Marsden, Jim Reader, Bob Coull
⇨③ Outpost Willem Moene, Jim Reader, Marcus Pratt, Pete Campbell, David Smith, Mark Stretch, Lyndon Gurr
⚡ Saint Petersburg Bob Coull, Rob Thomasson, Kevin Lee, Tony Wilcock

You should own these games or be familiar with their rules...

⚡ 1826 Pete Campbell, John Shelley, Don Smith, Stephen Webb, Lyndon Gurr
⇨③ 1829 (South) Pete Campbell, John Shelley
⇨① 1870 Lyndon Gurr, Willem Moene, Don Smith, Pete Campbell
⇨③ 18Rh1 Rhineland Willem Moene, Pete Campbell
⚡ Acquire Willem Moene, Tony Wilcock, Lyndon Gurr, John Marsden, Bob Coull
⇨③ Acquire (Powers) Michael Graystone, Richard Lunn
⇨① Age of Steam Pete Campbell, Mike Hutton, Marcus Pratt
⇨③ Agricola Marcus Pratt
① Industrial Waste Alan Harvey, Marcus Pratt, Mike Head
⇨② Mystic Wood Jim Reader, Kevin Lee, Roger Trethewey
⚡ Phoenicia Mike Hutton, Lyndon Gurr, Geoff Hardingham, Mark Stretch
③ Puerto Rico Tony Sait, Jim Reader, Willem Moene
⇨② Railroad Tycoon Michael Longdin, Pete Campbell
⇨③ RoboRally Allan Stagg, Jim Reader, Mark Stretch, Greg Payne, Don Shailer
⇨⑤ Sceptre of Zavador ... Marcus Pratt
① Sopwith Michael Graystone, Jim Reader, Mark Stretch, Greg Payne, Don Shailer

I supply everything you need for these...

⇨② 6 nimm! Colin Sharpe, Mark Stretch, Kevin Lee, Jim Reader, Bob Coull, Don Shailer
⚡/③ Battle! Michael Graystone, Allan Stagg, Steve Ham, Marcus Pratt, Mark Stretch, John Marsden, Pete Campbell, Greg Payne, Mike Taylor
① Breaking Away Kevin Lee, Jim Reader, Dennis Frank, Steve Ham, Greg Payne
⇨③ Bus Boss Mike Hutton, Pete Campbell
⚡ Railway Rivals John Marsden, Bob Coull, Roger Trethewey, Tony Sait, Jim Reader, Pete Campbell, Don Shailer

£1 fee for each game, unless otherwise stated, subsidising the cost of the zine

START

Welcome to issue #168. It's that time of year when we migrate into Europe for the Essen Game Fair. This will be out 12th year at Essen, and my 17th major games convention. By major I mean four days or more, so that excludes anything the UK has to offer. And you know what, it still excites me. It's going to be fun, expensive and tiring, possibly in that order. This issue will squeeze out just before we go, so if there are any issues with the games, don't expect any quick responses and fixes. That will have to wait until we are back.

This month's cover is from Essen, and is an artist's impression of the new Folkwang Museum. This is just around the corner from our usual hotel, but last year it was just a building site as they were doing a complete rebuild. We shall have to see how they are getting on. The opening is scheduled for 2010 to coincide with Essen's year as the City of Culture.

Three games are held this month - Don Shailer has found his work getting in the way. Work - the curse of the gaming classes. The games laid off this month are Bus Boss 313-MOR, Railway Rivals 2117-ND and RoboRally 3.

TringCon came and went, but not without some drama. About ten days before the day I fell and fractured the radius bone where it meets the elbow. Fortunately it was a very mild fracture, so although it gave me very limited movement in the arm and reduced the load I could lift or carry, it is well on the way to a full recovery. Many, many thanks to those who helped out on the day while I was still only halfway there.

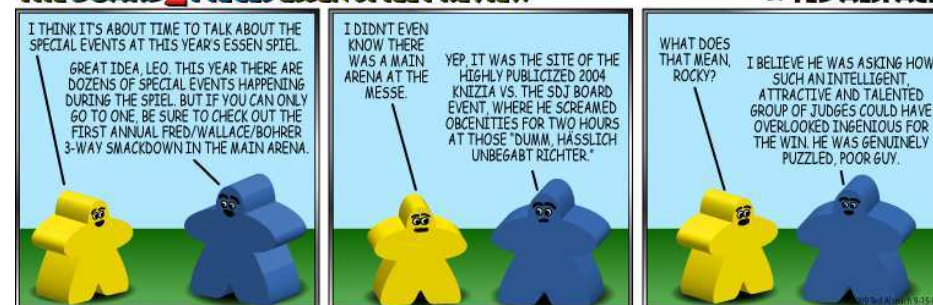
There were 67 people in the hall, not counting myself, my wife Valerie and her welcome helper Linda. Those two did a great job with the catering, while I pottered about taking money for various reasons. The Iain Rennie charity gained £220 from the day, , so it was all-time high records all round.

You can see some pictures of the day and get the chance to book for future events on the web site - www.fwtwr.com/tringcon/.

Getting back to Essen, next month should see the report on the show. I might even take the laptop, but whether I'll find time to do any writing while we are away remains to be seen. After Essen comes MidCon, which I'll probably miss, and then Eastbourne. This time of year is a busy time for gaming events.

THE BOARD 2 PIECES ESSEN SPIEL PREVIEW

BY TED ALSPACH



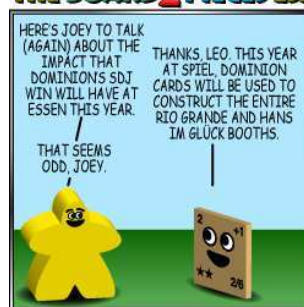
THE BOARD2PIECES ESSEN SPIEL PREVIEW

BY TED ALSPACH



THE BOARD2PIECES ESSEN SPIEL PREVIEW

BY TED ALSPACH



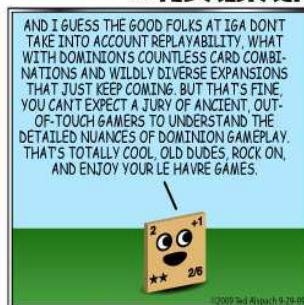
THE BOARD2PIECES ESSEN SPIEL PREVIEW

BY TED ALSPACH



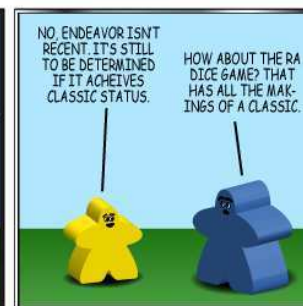
BOARD2PIECES

BY TED ALSPACH



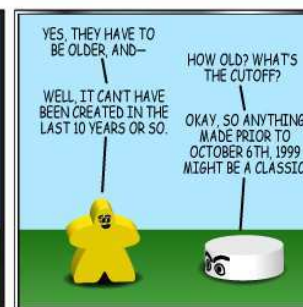
BOARD2PIECES

BY TED ALSPACH



BOARD2PIECES

BY TED ALSPACH



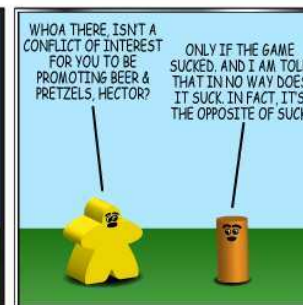
BOARD2PIECES

BY TED ALSPACH



BOARD2PIECES

BY TED ALSPACH





1825-H27

Just the operating round for this month.

OR3

OR3	Pres	Lay	Run	Pay	Notes	Price	Credit	Trains
LNWR	WM	8:Q9:1	8:S17:5	160	Yes	-	112▲	420 2 2 2
GWR	PC	9:T12:1	4:V16:3	90	Yes	①	100▲	360 2 2 2
Mid	LR	6:Q15:3	-	-	-	②	76▼	340 5 2

Notes: ① 180 to the bank for a '2' train
 ② 480 to the bank for a '2' train and a '3' train

Stock Round 4

Mike	Pete	Alan	Willem	Lionel
+ GWR pool	✗	+ LNWR pool	+ LNWR pool	✗
- L&M private	✗	✗	✗	✗
- C&HP private	✗	✗	✗	✗
+ Midland new	✗	✗	✗	✗
+ Midland new	✗	✗	✗	✗
✗	Priority for SR5			

Cash Flow	b/f	OR3	SR4	c/f	Value	%	Certs
Willem Moene	48	85	-112	21	723	21.7▲	6
Lionel Robbins	29	10	0	39	555	16.6▼	6
Mike Hutton	51	69	-39	81	633	19.0▼	6
Pete Campbell	0	65	0	65	695	20.8▲	5
Alan Harvey	52	82	-112	22	730	21.9▲	6

Portfolio	Privates	LNWR	GWR	Mid	NER	Cal	GER	LSWR	NBR	GCR	GNR	L&YR	SECR
Willem Moene	S&M	6D	-	-	-	-	-	-	-	-	-	-	-
Lionel Robbins	TWW	-	-	6D	-	-	-	-	-	-	-	-	-
Mike Hutton	-	-	4	2	-	-	-	-	-	-	-	-	-
✱ Pete Campbell	C&W	-	5D	-	-	-	-	-	-	-	-	-	-
Alan Harvey	S&D	4	1	-	-	-	-	-	-	-	-	-	-

Bank (new)	-	-	2	10	10	10	10	10	10	10	10	10	10
Price (new)	100	90	82	82	76	76	76	76	71	71	71	71	71
Bank (pool)	C&HP	-	-	-	-	-	-	-	-	-	-	-	-
	L&M	-	-	-	-	-	-	-	-	-	-	-	-
Price (pool)	112	100	76	-	-	-	-	-	-	-	-	-	-
Company credit	420	360	340	-	-	-	-	-	-	-	-	-	-
Tokens	5	5	3	4	4	4	4	4	3	3	3	4	4
Trains	2 2 2 2 2 2	3 2	-	-	-	-	-	-	-	-	-	-	-
Bank cash: 14,772		Certificate limit: 31				Trains: 5 x '3', 5 x '4'...							

Tiles	Tile number/Availability										One Operating Round between Stock Rounds		
1/3	2/3	3/5	4/7	5/5	6/7	7/10	8/16	9/13	55/3	56/3	58/4	69/3	
114/1	115/2	198/1	199/1										

1825 Units 1-2-3

Game H27

Referee:
Keith Thomasson

Minor Companies			
Company	Home	Base	Train
Canbrian	R8	CM	U3 410
Furness	M9	FR	5 550
Glouce	B12	SS	5 550
Highland	B8	HR	U3 410
LT&S	V22	LT	242 600
M&C	K7	MC	3T 370
M&GN	Q23	MG	4T 480
North Staffs	Q13	NS	3T 370
S&DR	W9	SD	5 550
Taff Vale	V8	TV	4T 480

© Keith Thomasson 2009

Orders required for the following rounds	By the early deadline
OR4, SR5	Adjudication can pause between rounds if requested



1829-U25

Just the one round this time.

OR12

OR12	Pres	Lay	Token	Run	Pay	Notes	Price	Credit	Trains
LNWR	RT	8:U15:1	•U21 !	250	No	-	200▼	580	3 2 2
GWR	PC	8:W13:2	•U11	160	No	①	180▼	560	3 2 2
Mid	JS	20:R14:3	•P16	220	Yes	②	100▼	140	4 3 3
LSWR	Rcvr	-	•V22	-	-	-	47▼	10	-
GNR	PC	25:V18:2	•N12	80	Yes	-	76▲	40	4
LBSC	LR	21:W17:1	•W21	180	Yes	-	71▲	350	4 3 2
GER	RT	9:U17:3	•U11 !	70	Yes	-	67▲	210	4
GCR	JS	10:N14:1	•P12	120	Yes	-	64▲	40	3 2

Notes: ① 20 to the GNR for a '2' train
② 160 to the LBSC for a '3' train

Cash Flow	b/f	OR12	c/f	Value	%	Certs
Rob Thomasson	179	98	277	2,225	27.9▼	16
John Shelley	38	235	275	1,812	22.8▲	15
Pete Campbell	136	84	220	2,278	28.6▼	14
Lionel Robbins	126	258	384	1,649	20.7▲	15

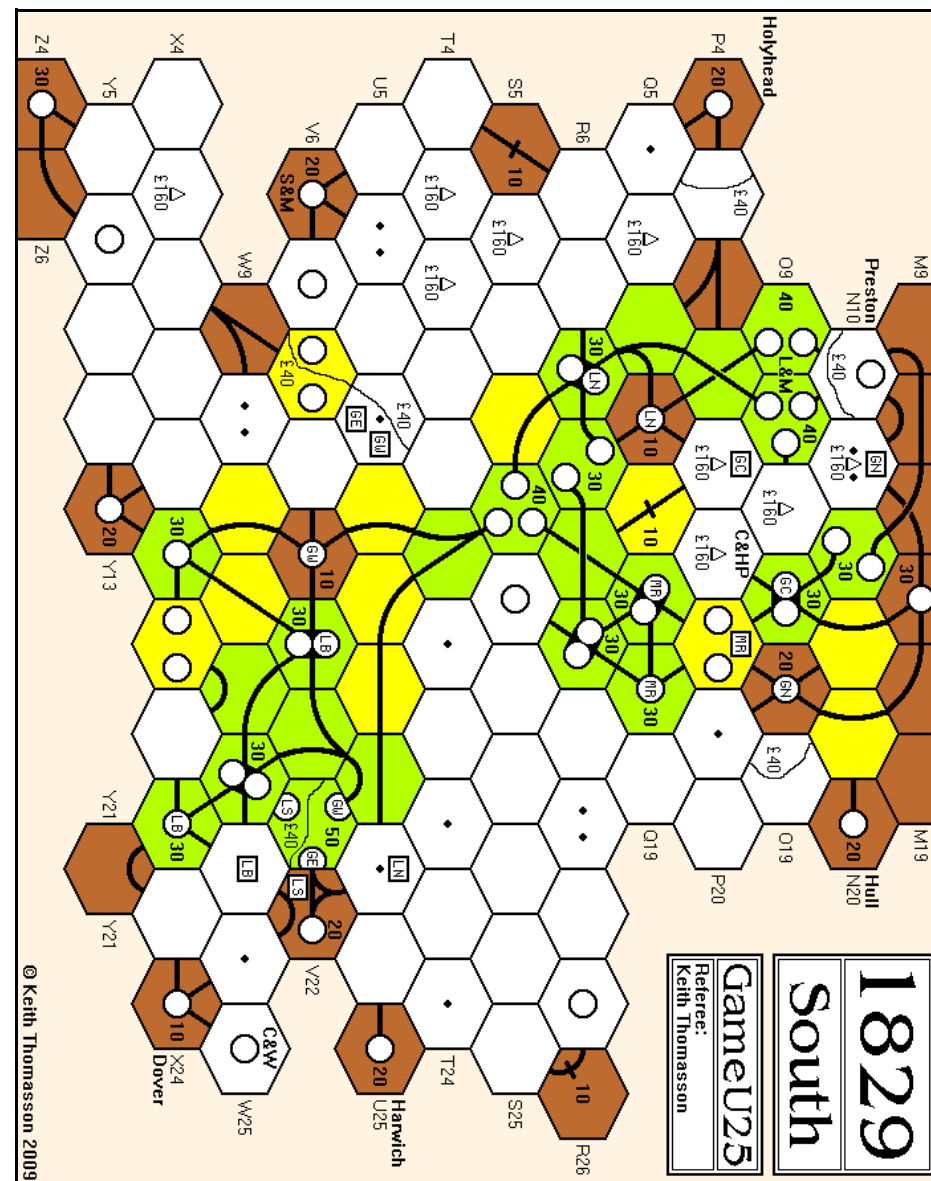
Portfolio	Priv/SP	LNWR	GWR	Mid	LSWR	GNR	LBSC	GER	GCR
Rob Thomasson	S&M	5D	1	-	-	-	1	9D	1
John Shelley	-	-	2	6D	-	-	-	1	8D
• Pete Campbell	-	1	7D	-	-	6D	2	-	-
Lionel Robbins	-	-	-	4	-	4	7D	-	1

Bank (new)	Hull	-	-	-	-	-	-	-	-
Price (new)	100	90	82	76	71	67	64	61	-
Bank (pool)	C&HP	4	-	-	10D	-	-	-	-
	C&W	-	-	-	-	-	-	-	-
	L&M	-	-	-	-	-	-	-	-
Price (pool)	200	180	100	47	76	71	67	64	-
Company credit	580	560	140	10	40	350	210	40	-
Tokens	4	4	3	4	4	2	3	3	-
Trains	3 2 2	3 2 2	4 3 3	-	4	4 3 2	4	3 2	-
Bank cash: 18,836		Certificate limit: 18				Trains: 4 x '5', 4 x '7'			

Tiles	Tile number/Availability														Two Operating Rounds between Stock Rounds	
1/1	2/2	3/2	4/5	5/2	6/3	7/4	8/3	9/8	10/3	12/2	13/3	14/2				
15/-	16/1	17/1	18/-	19/2	20/1	21/1	22/1	23/4	24/4	25/2	26/2	27/2				
28/-	29/1	30/1	31/1													

Pete, the GWR bought the '2' train from the GNR for 20 because train deals must be in multiples of 10. This reflects the fact that there are no smaller denomination company credits in 1829. I know we could do it more finely in this medium, but we respect the original components!

The LSWR in the Receiver's hands did nothing, and is unlikely to do anything while it cannot actively use any track. While it could do things that might benefit the LSWR in the long term, there is no guarantee that such benefits would materialise.



Orders required for the following rounds *By the early deadline*

OR13, SR11 *Adjudication can pause between rounds if requested*

1830-G26

Two new companies,
both for Willem.

SR6

Stock Round 6

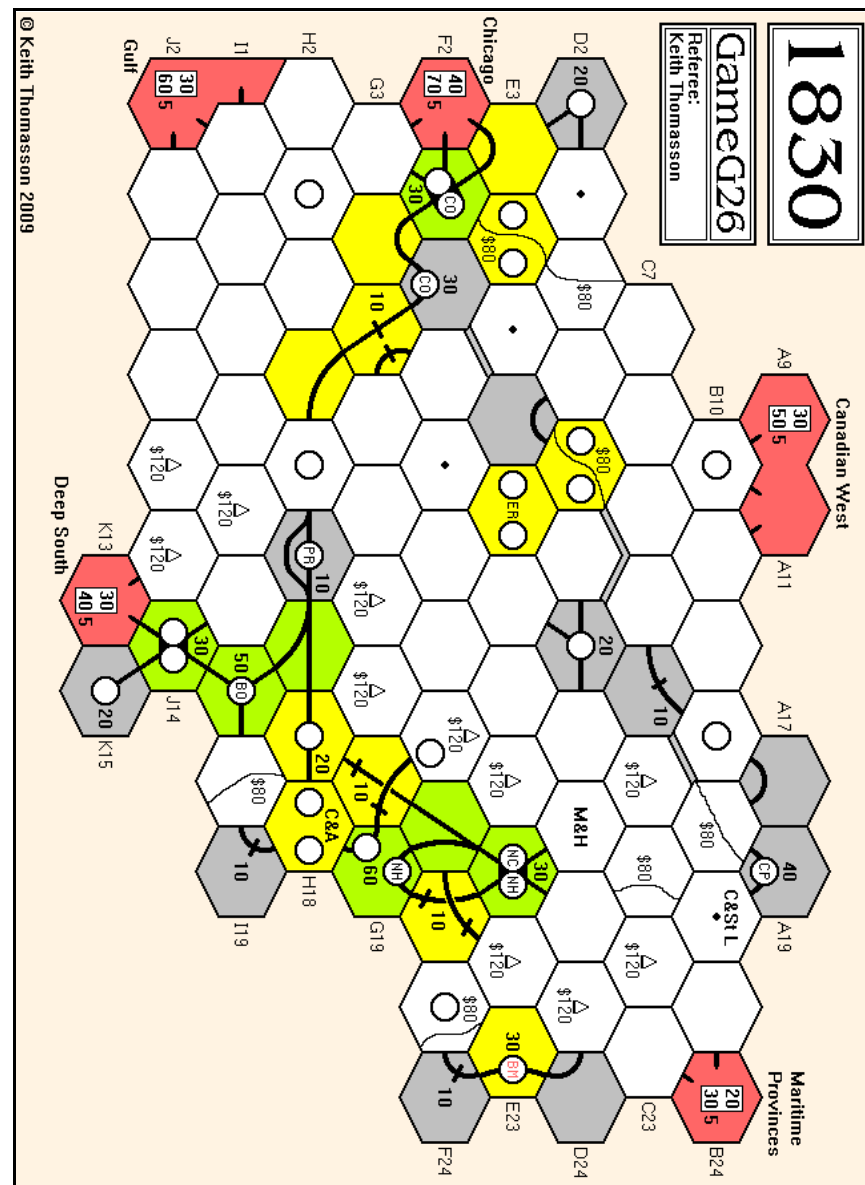
Willem	Tony	Mike Head	Mike Hutton	Richard
+ Erie/Pres [100]	+ B&O new	+ NYNH pool	+ PRR pool	+ PRR new
+ Erie new	✗	+ PRR new	✗	+ NYNH pool
+ Erie new	✗	✗	✗	✗
+ Erie new	✗	✗	✗	✗
+ Erie new (floated)	✗	✗	✗	✗
- 4 NYC (v69G)	✗	✗	✗	✗
+ CPR/Pres [82]	✗	✗	✗	✗
+ CPR new	✗	✗	✗	✗
+ CPR new	✗	✗	✗	✗
+ CPR new	✗	✗	✗	✗
+ CPR new (floated)	✗	✗	✗	✗
✗	Priority for SR7			

Cash Flow	b/f	SR6	c/f	Value	%	Certs
Mike Head	188	-160	28	909	19.7▲	10
Mike Hutton	151	-90	61	742	16.1▼	8
Richard Lunn	173	-160	13	954	20.7▲	10
Willem Moene	759	-732	27	1,257	27.3▼	11
Tony Salt	161	-100	61	744	16.2▼	7

Portfolio	Privates	B&M	B&O	C&O	CPR	Erie	NYC	NYNH	PRR
Mike Head	-	-	1	6P	-	-	1	2	1
Mike Hutton	-	-	1	1	-	-	1	5P	1
Richard Lunn	M&H	-	-	1	-	-	1	2	6P
Willem Moene	-	-	-	-	6P	6P	2P	-	-
✗ Tony Salt	B&O	-	5P	2	-	-	1	-	-

Bank (new)	10	3	-	4	4	-	-	2
Price (par)		100	76	82	100	76	71	90
Bank (pool)	-	-	-	-	-	4	1	-
Price (pool)		90C	82E	82C	100A	69G	70G	90C
Company credit		540	302	820	1,000	0	196	542
Tokens	2	2	1	4	3	3	-	3
Trains		4	3.3	-	-	3.3	4	3
Bank cash: 8,410	Certificate limit: 13		Trains: 2 x '4', 3 x '5'...					
Current operating order:	Erie, B&O, PRR, C&O, CPR, NYNH, NYC							

Tiles	Tile number/Availability				Two Operating Rounds between Stock Rounds								
1/1	2/-	3/2	4/2	7/2	8/7	9/7	55/1	56/-	57/3	58/2	69/-	14/1	
15/1	16/1	18/1	19/1	20/1	23/2	24/2	25/1	26/1	27/1	28/1	29/1	53/1	
54/-	59/2												



Orders required for the following rounds	By the early deadline
OR7, OR8	Adjudication can pause between rounds if requested



1830-V1-N24

Stephen inherits the
Erie, but no train

OR16 - SR8

OR16	Pres	Lay	Run	Pay	Notes	Price	Credit	Trains
CPR	MS	-	260	Yes	-	185C	72	6
Erie	AH	-	180	Yes	-	180A	80	-
PRR	AH	7:J4:1	200	Yes	① ②	170C	244	D 5
B&M	MS	-	200	Yes	-	155C	120	5
C&O	DS	25:B12:3	240	Yes	-	100E	96	D
B&O	TS	-	190	Yes	-	100E	115	D
NYC	DS	8:I9:1	200	Yes	-	90C	31	5
NYNH	SW	7:H6:3	230	Yes	-	70C	60	6

Notes: ① 100 to the bank for a token in H8
② 1 to the Erie for a Diesel

Stock Round 8

Mark	Don	Alan	Stephen	Tony
- 1 NYC (▼82D)	✗	- 4 Erie (▼120D) [Pres to Stephen] + PRR new	- 1 Erie (▼)	+ PRR pool
✗	✗	+ NYC pool	✗	+ PRR pool
✗	✗	+ NYC new	✗	+ PRR pool
✗	✗	✗	✗	✗
Priority for SR9				

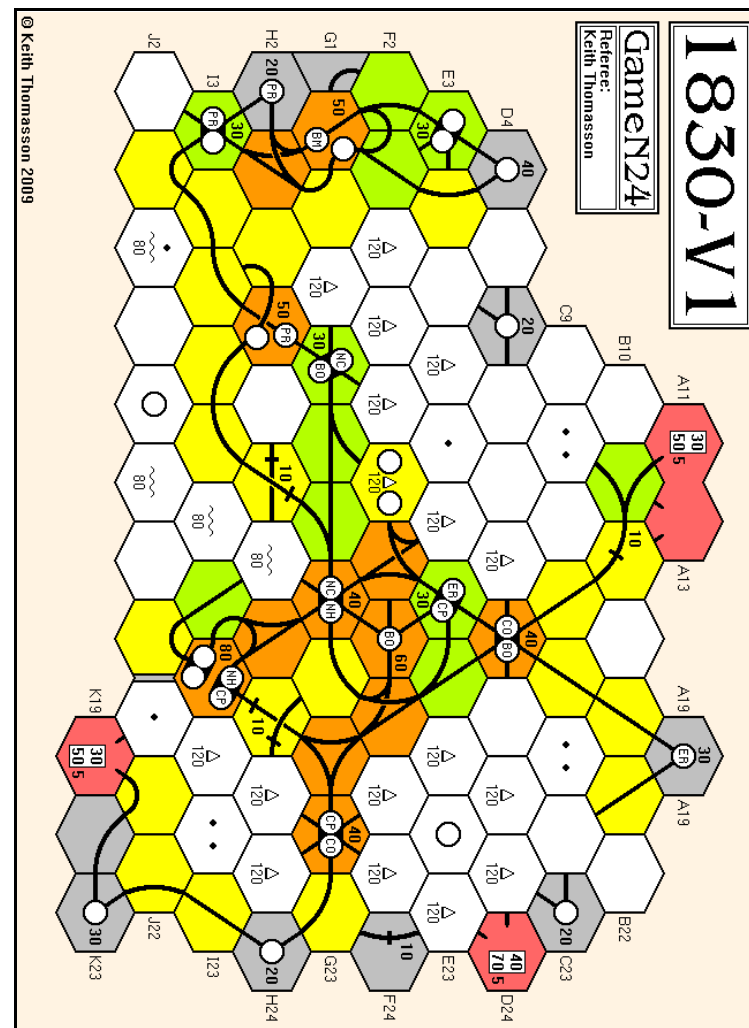
Cash Flow	b/f	OR16	SR8	c/f	Value	%	Certs
Stephen Webb	1,690	350	120	2,160	3,845	21.5▼	13
Tony Sait	543	229	-510	262	1,914	10.7▲	13
Mark Stretch	2,056	362	90	2,508	4,818	27.0▲	13
Don Smith	898	302	0	1,200	2,492	14.0▲	12
Alan Harvey	2,154	297	448	2,899	4,788	26.8▼	13

Portfolio	B&M	B&O	C&O	CPR	Erie	NYC	NYNH	PRR
Stephen Webb	-	1	2	3	4P	-	5P	-
Tony Sait	2	3P	-	-	-	1	4	4
✗ Mark Stretch	6P	1	1	6P	-	-	1	-
Don Smith	-	2	6P	-	-	6P	-	-
Alan Harvey	-	3	1	1	1	2	-	6P

Bank (new)	-	-	-	-	-	1	-	-
Price (par)	90	100	67	76	82	90	71	100
Bank (pool)	2	-	-	-	5	-	-	-
Price (pool)	155C	110D	110D	220B	120D	90C	75F	200B
Company credit	120	115	96	72	80	31	60	244
Tokens	1	-	1	1	1	2	-	1
Trains	5	D	D	6	-	5	6	D.5

Bank cash: 2,153 Certificate limit: 13 Trains: Diesels
Current operating order: CPR, PRR, B&M, Erie, C&O, B&O, NYC, NYNH

Tiles	Tile number/Availability							Three Operating Rounds between Stock Rounds						
1/1	2/1	3/2	4/2	7/-	8/-	9/2	55/-	56/1	57/4	58/1	69/-	14/1		
15/-	16/1	18/-	19/1	20/1	23/3	24/-	25/-	26/1	27/-	28/-	29/1	53/2		
54/1	59/2	39/1	40/-	41/1	42/2	43/-	44/1	45/1	46/2	47/1	61/1	62/-		
63/-	64/1	65/1	66/-	67/-	68/1	70/1								



Orders required for the following rounds

By the early deadline

OR17, OR18, OR19



1835-C26

The Prussian can now be started.

OR9 - SR8

OR9	Pres	Lays	Run	Pay	Notes	Price	Credit	Trains
B-M	JS	19:K5:6	80	Half	-		185	-
B-P	TS	-	190	Half	-		360	-
Mag	WM	-	70	Half	-		130	-
K-M	WM	-	140	Half	-		200	3
B-S	LQ	12:A11:4	80	Half	①		0	2+2
A-K	LQ	8:C17:4	100	Half	②		0	2+2
ByE	DS	207:O15:5	300	Yes	-	172D▲	459	2+2
SxE	LQ	4:G11:2	100	Yes	③	136C▲	0	4 3+3 2+2
HeE	JS	88:F6:3	250	No	-	80E▼	342	3+3 3
WtE	TS	69:M7:1	60	Yes	④	84D▲	164	3+3 3
BaE	LQ	-	90	Yes	⑤	84D▲	64	4 4 3

- Notes: ① 231 to the BaE for a '2+2' train
 ② 260 to the BaE for a '2' train
 ③ 630 to the bank for a '3+3' train and a '4' train
 ④ 70 to the B-P for a '3' train
 ⑤ 720 to the bank for two '4' trains

Stock Round 8

Willem	John	Tony	Don	Lyndon
- 3 SxE (▼124D)	+ HeE new (20%)	+ BaE new	+ ByE pool	✗
✗	✗	✗	+ BaE new	✗
✗	- 1 ByE (↔)	✗	+ WtE new	✗
	+ BaE new (20%)			
✗	✗	✗	✗	Priority for SR9

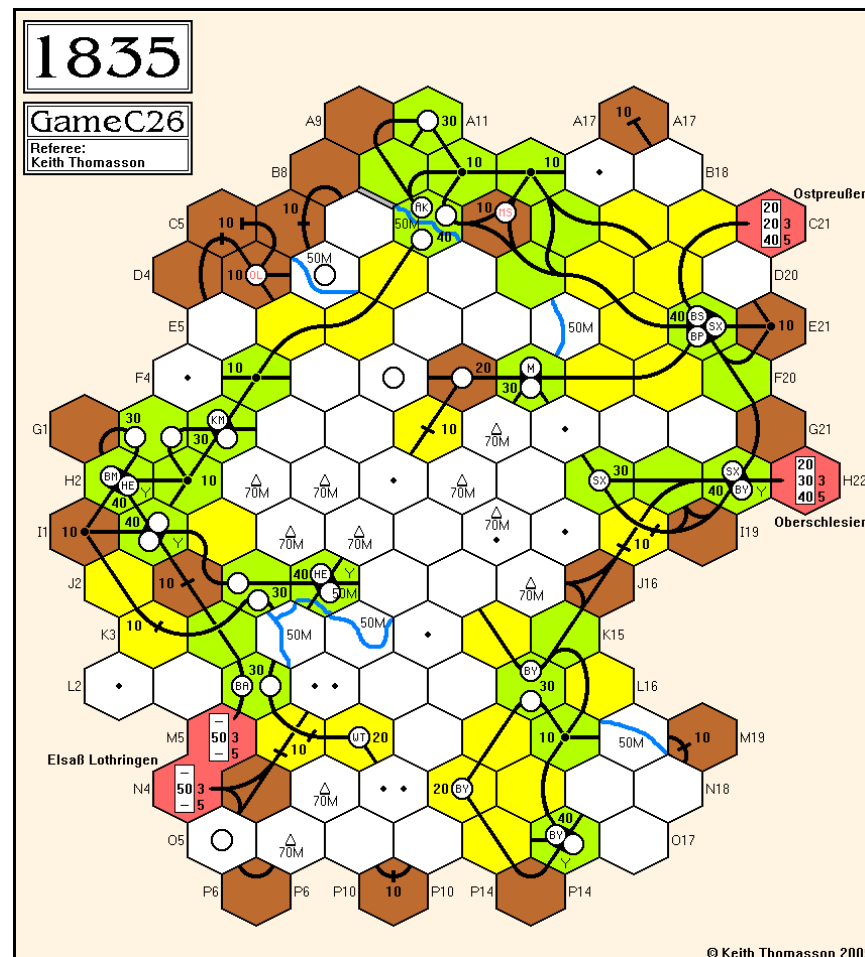
Cash Flow	b/f	OR9	SR8	c/f	Value	%	Certs	Limit
John Shelley	359	115	-164	310	1,776	22.1▼	13	13
Tony Sait	206	201	-84	323	1,539	19.1▲	10	12
Don Smith	273	210	-340	143	1,689	21.0▲	9	13
Lyndon Gurr	404	209	0	613	2,059	25.6▼	12	12
Willem Moene	205	135	408	748	988	12.3▲	4	12

Portfolio	Privs/Minors	PrE	ByE	SxE	BaE	HeE	WtE	MsE	OIE
John Shelley	Ost, Bra, B-M	-	-	10/1	20/1	100/8	-	-	-
Tony Sait	Han, B-P	-	10/1	10/1	10/1	-	60/5	-	-
Don Smith	-	-	80/7	-	10/1	-	10/1	-	-
✗ Lyndon Gurr	Pfa, B-S, A-K	-	-	50/4	60/5	-	-	-	-
Willem Moene	Mag, K-M	20/2	-	-	-	-	-	-	-

Bank (new)	20/2	-	-	-	-	30/2	100/7	100/7
Price (new)	154	92	88	84	84	84	80	80
Bank (pool)	-	10/1	30/3	-	-	-	-	-
Price (pool)		172D	124D	86C	84D	84D		
Company credit		459	0	400	510	248		
Tokens	2	1	-	1	-	1	2	2
Trains		2+2	4 3+3	4 4 3	3+3	3+3		
			2+2	3	3			

Bank cash: 7,371 Certificate limit: see above Trains: 1 x '4+4', 2 x '5'...
 Current operating order: B-M, B-P, Mag, K-M, B-S, A-K, ByE, SxE, BaE, WtE, HeE

Tiles	Tile number/Availability							Two Operating Rounds between Stock Rounds						
1/1	2/1	3/2	4/2	5/3	6/1	7/7	8/6	9/6	55/1	56/1	57/2	58/3		
69/-	201/2	202/2	12/1	13/2	14/1	15/1	16/2	18/1	19/1	20/2	23/3	24/2		
25/2	26/-	27/1	28/1	29/2	87/-	88/1	203/2	204/-	205/1	206/-	207/-	208/-		
209/-	210/-	211/-	212/1	213/1	214/1	215/-								



Tony, don't forget that you can choose to start the Prussian at the beginning of one of these rounds..

Orders required for the following rounds *By the early deadline*

OR10, OR11 *Adjudication can pause between rounds if requested*



1837-Y25

A very busy round with trains moving all over the place.

OR7

The Sb ran for 80 with 55 for the mines, and Stephen should have actually got the money for his shares! This meant that instead of his reported deals, Stephen sold 2 Bk and an Sb and bought 5 Gt, floating the company. Tony's stock deals also changed, as he bought 1 Bk and 1 Ms instead of 2 Ms. The EPP and RGTE coal companies were exchanged for Bk shares and the Bk returned a '1G' train to the bank. John, you didn't buy a second share because you only had 28 cash.

The EHS folds into the Th.

OR7	Pres	Lay	Run	Mines	Pay	Notes	Price	Credit	Trains
EOD	JH	50:D16:3	60	20	Half	①		0	-
EKT	GH	405:C23:3	70	25	Half	②		6	-
LRB	JH	406:J26:1	-	-	Half	③		0	-
BB	TR	26:J14:6	80	35	Half	④		55	2G
S1	TB	12:I15:2	70	-	Half	⑤		35	-
S2	TB	429:J16:5	70	-	Half	⑥		134	-
S3	SW	208:I7:3	60	-	Half	⑦		-	-
S4	GH	206:K5:2	100	-	Half	-		85	-
S5	TR	207:L2:1	130	-	Half	-		100	-
K1	GH	427:G17:1	70	-	Half	⑧		1	3
K2	TR	9:I11:1	80	-	Half	⑨		1	3
K3	TR	25:F14:3	70	-	Half	-		160	-
U1	GH	425:H22:1	100	-	Half	-		51	-
U2	SW	25:I19:6	60	-	Half	⑩		1	-
U3	JH	-	100	-	Half	⑪		0	3
Cl	TR	8:I37:5	60	20	Yes	⑫	121A*	515	3+1 2G
Th	GH	206:F28:2	60	20	Yes	⑬	114A*	312	4 3+1
Bk	JH	-	110	30	Yes	⑭	80E*	337	4 2G
Gt	SW	201:D36:5	-	-	-	⑮	72F*	41	4 2G
Sb	SW	405:J36:6	-	-	-	⑯	63I*	52	4 3G
Ms	TB	87:F18:4	210	30	Yes	-	65H*	81	3 2G

- Notes:
- ① 195 to the LRB for a '1G' train
 - ② 230 to the bank for a '2G' train
 - ③ 345 to the Bk for a '1G' train
 - ④ 180 to the bank for a '3' train
 - ⑤ 1 to the EKT for a '2G' train
 - ⑥ 155 to the Sb for a '1G' train
 - ⑦ 159 to the U1 for a '3' train
 - ⑧ 70 to the bank for terrain costs
 - ⑨ 59 to the Cl for a '3' train
 - ⑩ 89 to the Sb for a '1G' train
 - ⑪ 140 to the Bk for a '3' train
 - ⑫ 280 to the bank for a '3+1' train
 - ⑬ Coal companies and minor companies discard extra trains
 - ⑭ 470 to the bank for a '4' train
 - ⑮ 239 to the Sb for a '2G' train
 - ⑯ 1,060 to the bank for a '3G' train and a '4' train

Cash Flow	b/f	OR7	c/f	Value	%	Certs
John Hopkins	28	110	138	891	11.9▼	7/8
Stephen Webb	18	110	128	1,350	18.0▼	8/12
Tony Bromley	45	247	292	1,647	22.0▲	8/12
Tony Robbins	50	293	343	1,956	26.1▲	12/13
Geoff Hardingham	62	226	288	1,653	22.0•	11/12

Exchange options: EOD or EKT for Ms, LRB for Th. The Kk can be started.

Portfolio	Mount/Coal/Minor	Bh	Bk	Cl	Gt	Kk	Ms	Sb	Sd	Th	Ug
John Hopkins	EOD LRB/U3D	-	5D	-	-	-	-	1	-	-	-
Stephen Webb	Arl Woch/U2D	-	-	-	5D	-	-	5D	1	-	-
Tony Bromley	Kara Semm/U1	-	1	-	-	-	5D	-	3D	1	-
Tony Robbins	Karst Tau/BB/K2 K3	-	1	6D	-	-	1	-	1	-	-
• Geoff Hardingham	Bren/EKT/K1/U1D U3	-	1	-	-	-	-	1	1	5D	-

Bank (new)	9	-	4	5	7	1	-	4	3	5
Price (new)		85	104	75	120	70	70	142	104	175
Bank (pool)		2	-	-		1	3			
Price (pool)		80E	121A	72F	120D	65H	63I	142D	114A	175D
Credit		337	515	41		81	52	1064	312	
Tokens		3	3	3	-	3	1	-	3	-
Trains		4	3+1	4		3	4	3	4	
		2G	2G	2G		2G	3G	2G	3+1	
Bank cash: 12,686 Certificate limit: 17 Trains: 1 x '3G', 1 x '4E', 1 x '4+1'...										
Current operating order: Coal companies, K1-3, U1-3, Sd, Cl, Th, Bk, Gt, Ms, Sb										

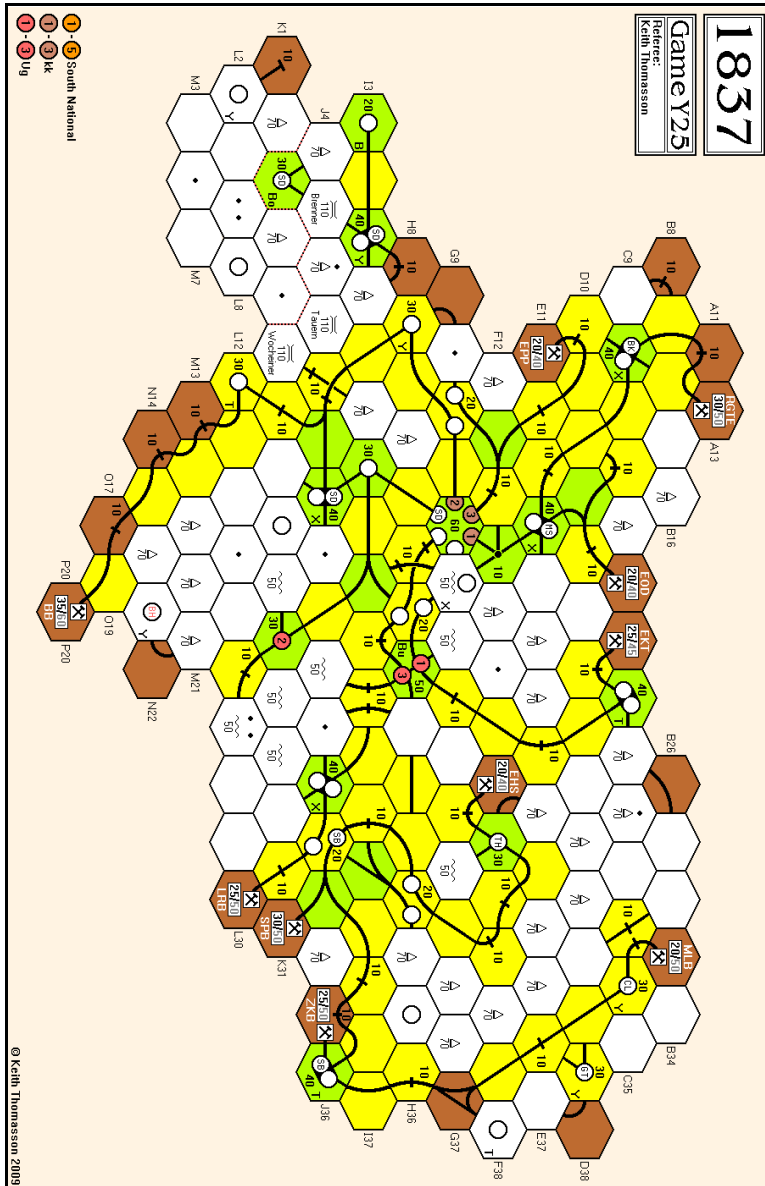
Tiles	Tile number/Availability					Two Operating Rounds between Stock Rounds					
1/1	2/2	3/1	4/5	5/2	7/7	8/18	9/11	55/1	56/1	57/3	58/4
201/1	202/2	401/3	402/3	404/-	12/1	16/3	17/1	18/1	19/3	20/3	23/12
25/2	26/3	27/4	28/3	29/3	30/-	31/1	87/1	88/2	204/2	205/2	206/1
208/1	405/2	406/3	408/4	410/2	411/2	412/2	413/2	414/1	415/1	416/1	417/1
419/2	420/2	421/2	422/2	423/2	424/2	425/1	426/-	427/-	429/-		

There were far too many corrections to last time, for which I apologise. The players were all notified via e-mail, so the correct position should have been clear to all.

Some requests for companies to pay the bank to dispose of old trains didn't happen, because that can only be done when a company is on its train limit. The train limit for coal companies and minors was two until the first '3+1' was bought - perhaps you thought the limit was one. No problem, it just meant more cash on hand to swap train around.

Tony, you were right about your query on the Ms tile lays last time, but you didn't mention it at the beginning of your orders so that I could sort it out before starting this round. As a result I only found the note when I started operating the Ms this time - at the very end of the round. So much has happened this time that I decided I had to leave it as it was, particularly as other actions had been made on the basis of the published position.

Postal delays gave some people less time than usual to do their orders. This may have contributed to one problem, but there was a sharp rise in the number of illegal hex references, mostly quoting even numbers on hex rows that only offered odd numbers, and vice versa. I trust my interpretations gave you what was intended.



Orders required for the following rounds	By the early deadline
OR8, SR8	Adjudication can pause between rounds if requested

1837-L27

One major company leaves the starting blocks.

OR3 - SR4

Steve pointed out that tile 402 should have a value of 20, not 30 as on my tile sheet. My masters have been updated - please adjust yours accordingly.

The U3 credit was incorrectly listed as 25 last time. It should have been zero.

OR3	Pres	Lay	Run	Mines	Pay	Notes	Price	Credit	Trains
EPP	PC	7:C13:5	40	20	Half	-		65	1G
RGTE	DS	-	40	30	Half	-		95	1G
EOD	DS	58:C15:4	20	20	Half	-		55	1G
EKT	PC	9:D24:1	40	25	Half	-		90	1G
MLB	DS	201:C33:5	50	20	Half	-		70	1G
ZKB	DS	58:I33:4	50	25	Half	-		95	1G
SPB	PC	58:I27:2	30	30	Half	-		85	1G
LRB	ST	402:J26:4	30	25	Half	-		70	1G
BB	PC	7:M15:5	30	35	Half	-		95	1G
EHS	PC	58:F30:5	40	20	Half	-		75	1G
S1	ST	8:I17:6	60	-	Half	-		60	2
S2	AR	-	40	-	Half	-		40	2
S3	AR	-	50	-	Half	-		50	2
S4	AR	-	50	-	Half	-		50	2
S5	ST	-	50	-	Half	-		50	2
K1	ST	-	50	-	Half	-		50	2
K2	SW	8:H12:6	60	-	Half	-		60	2
K3	ST	4:G11:3	50	-	Half	-		50	2
U1	SW	58:G23:3	60	-	Half	① ②		10	2 2
U2	SW	-	50	-	Half	-		50	2
U3	AR	-	50	-	Half	-		25	2 2

Notes: ① 50 to the bank for terrain costs
② 90 to the bank for a '2' train

Stock Round 4

Pete	Don	Steve	Adam	Stephen
✗	+ BK/Dir {80}	+ TH/Dir {104}	+ Sd new	+ Bk new
✗	+ Bk new	✗	✗	+ Bk new {floated}
✗	✗	✗	✗	✗
Priority for SR5				

Cash Flow	b/f	OR3	SR4	c/f	Value	%	Certs
Pete Campbell	130	125	0	255	905	22.2▼	6
Don Smith	145	110	-240	15	785	19.3▼	7
Steve Thomas	135	135	-208	67	825	20.3▲	8
Adam Romoth	157	142	-142	157	884	21.7▲	8
Stephen Webb	75	97	-160	12	672	16.5▼	7

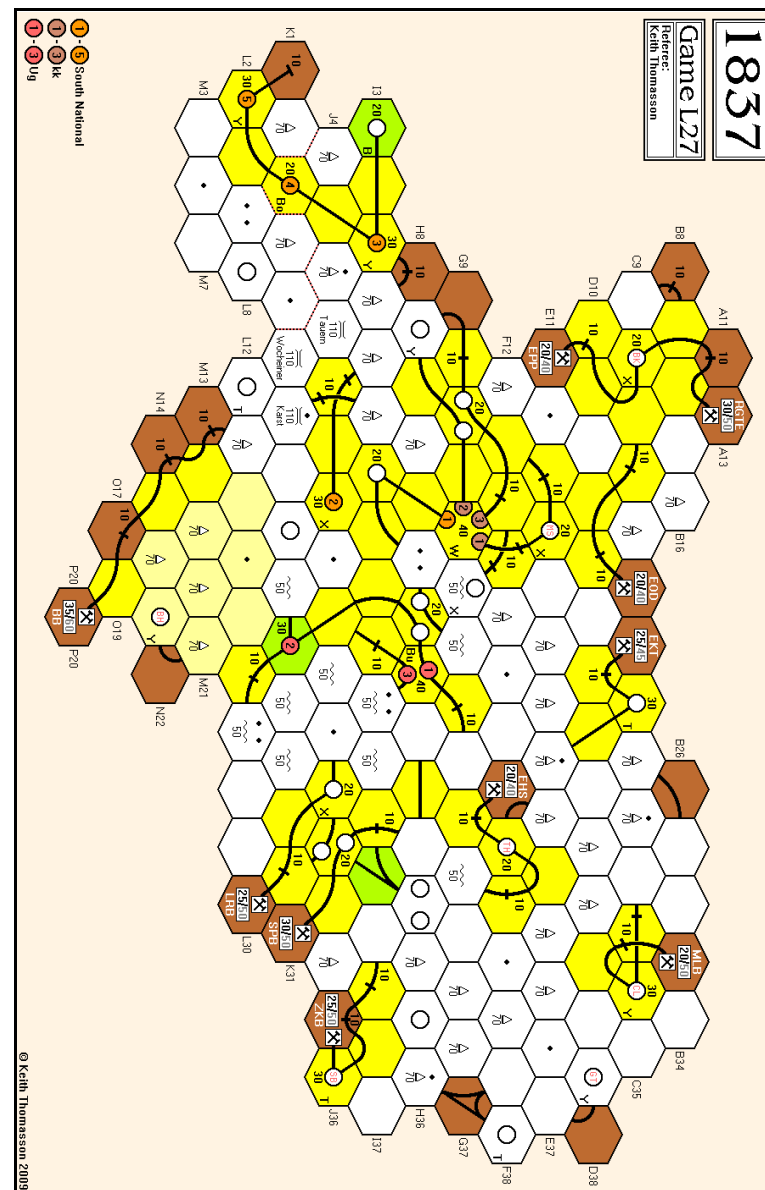
The EPP (Pete) and RGTE (Don) can be exchanged before the operating round for shares in the Bk now that it is floated. The default will be no exchange unless you order it.

Portfolio	Mountain Railways etc	Bh	Bk	Cl	Gt	Kk	Ms	Sb	Sd	Th	Uq
✱ Pete Campbell	Tau/EPP EKT SPB BB EHS	-	-	-	-	-	-	-	-	-	-
Don Smith	Woch/RGTE EOD MLB ZKB	-	3D	-	-	-	-	-	-	-	-
Steve Thomas	Kars Sem/LRB/S1 S5/K1 K3	-	-	-	-	-	-	-	-	2D	-
Adam Romoth	Arl Bren Kara/S2 S3 S4/U3D	-	-	-	-	-	-	-	1	-	-
Stephen Webb	K2/U1D U1 U2D U3	-	2	-	-	-	-	-	-	-	-

Bank (new)	9	3	9	10	7	8	8	4	6	5
Price (new)	80								104	
Bank (pool)	-								-	
Price (pool)	80E								104A	
Company credit	640									
Tokens	3	3	3	3	-	3	3	-	3	-

Trains
 Bank cash: 12,472 Certificate limit: 17 Trains: 1 x '2', 5 x '3'/6 x '2Q'..
 Current operating order: Coal companies, S1, S2, S3, S4, S5, K1, K2, K3, U1, U2, U3, Bk

Tiles	Tile number/Availability					One Operating Round between Stock Rounds					
1/2	2/3	3/4	4/8	5/-	7/6	8/16	9/14	55/1	56/-	57/1	58/3
201/2	202/2	401/2	402/1	404/1							



Orders required for the following rounds	By the early deadline
OR3, SR5	Adjudication can pause between rounds if requested



1856-P26

Two and a half new companies.

SR6

Stock Round 6

Lyndon	Mike Hutton	Mike Head	Tony	Richard
- 4 LPS {↔}	+ CA new	+ GW new	+ TGB/Pres {70}	- 3 GT {↔}
- 1 CPR {↔}				+ CA new
+ BBQ/Pres{100}				
+ WGB/Pres {65}	+ THB new	+ THB new	+ TGB new	+ CA new
+ BBQ new	+ CV new	- 1 GW {↔}	✗	+ CA new
		+ CA new		
+ BBQ new	✗	✗	✗	+ GW new
+ BBQ new	✗	✗	✗	+ GW pool
+ WGB new	✗	✗	✗	+ GW pool
+ WGB new	✗	✗	✗	+ GW pool
+ WGB new	✗	✗	✗	
✗	Priority for SR7			

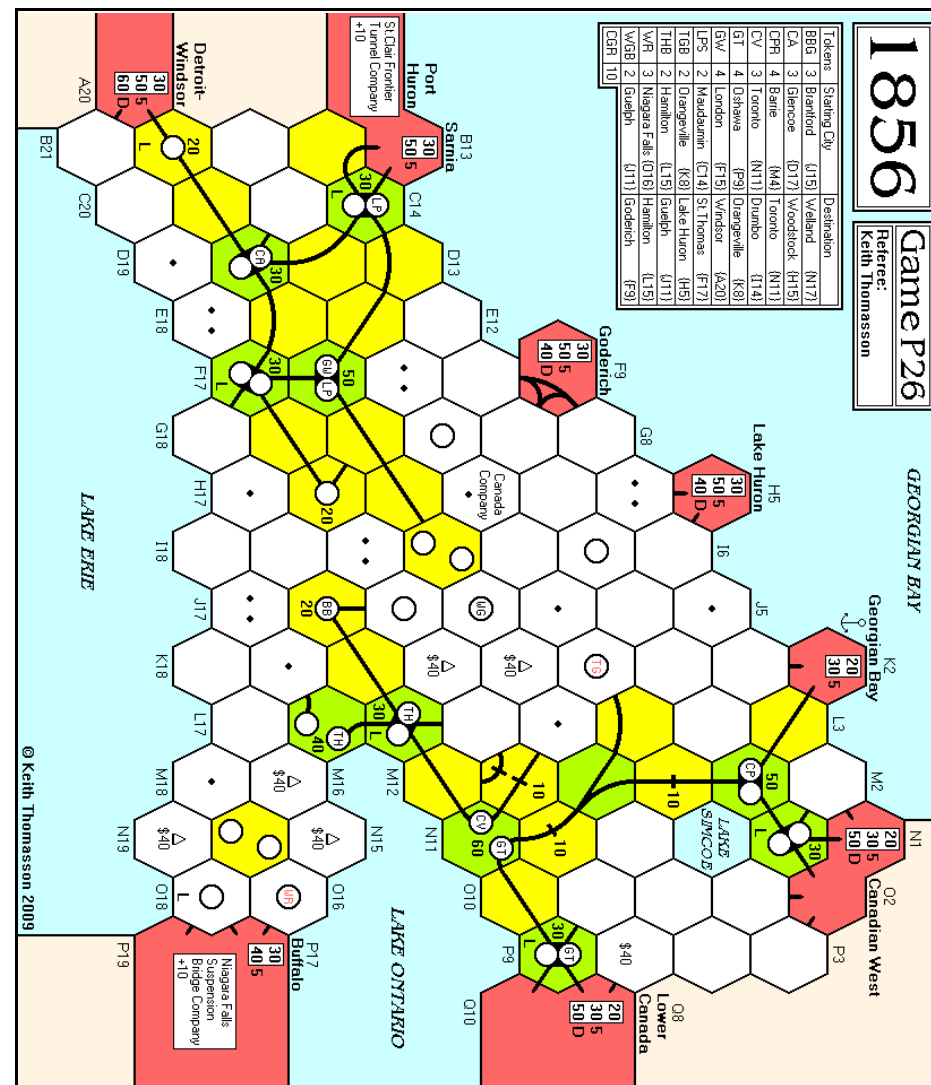
Cash Flow	b/f	SR6	c/f	Value	%	Certs
Richard Lunn	291	-225	66	1,281	21.2▲	13
Lyndon Gurr	378	-305	73	1,493	24.7▼	13
Mike Hutton	241	-240	1	856	14.2▲	8
Mike Head	222	-155	67	1,122	18.6▼	10
Tony Sait	278	-210	68	1,299	21.3▼	11

Portfolio	Privates	BBQ	CA	CPR	CV	GT	GW	LPS	TGB	THB	WGB	WR
Richard Lunn	-	-	3	1	5P	-	4	1	-	-	-	-
Lyndon Gurr	-	5P	5P	-	-	-	-	2P	-	-	5P	-
✗ Mike Hutton	-	-	1	-	1	-	6P	-	-	1	-	-
Mike Head	-	-	1	6P	-	-	-	-	-	5P	-	-
Tony Sait	-	-	-	1	2	5P	-	2	3P	-	-	-

Bank (new)	5	-	-	-	-	-	-	7	4	5	10
Price (par)	100	70	65	70	75	65	70	100	65	-	-
Bank (pool)	-	-	2	2	5	-	5	-	-	-	-
Price (pool)	100A	75D	80F	80F	110E	100E	110E	70E	100A	65F	-
Company credit	500	519	0	397	199	404	187	-	685	325	-
Tokens	3	2	3	2	2	3	-	2	-	2	3
Trains	-	4	3	4	3	3	4	3	4	-	-

Bank cash: 8,299... Certificate limit: 13... Trains: 3 x '5', 2 x '6'...
Current operating order: LPS, GT, THB, GW, CPR, CV, CA

Tiles	Tile number/Availability				Two Operating Rounds between Stock Rounds							
1/1	2/-	3/3	4/2	5/-	6/2	7/6	8/9	9/4	55/1	56/1	57/3	58/2
69/1	14/1	15/1	16/1	17/1	18/1	19/1	20/1	23/3	24/4	25/1	26/1	27/1
28/1	29/1	59/1	120/-	121/-								



Orders required for the following rounds

By the early deadline

OR9, OR10

Adjudication can pause between rounds if requested

1856-Y27

Another quick-start 1856.

NEW GAME

Welcome to our latest 1856. In common with recent 18xx games, the first stock round was run via e-mail. The players for this game are as follows.

Willem Moene	Dijkhuizen 4, 1112 SB Diemen, The Netherlands
Rob Thomasson	205 Tolcarne Drive, Pinner, Middlesex, HA5 2DN
Lyndon Gurr	15b Hedley Street, Maidstone, Kent, ME14 1UG
Don Smith	16 Gilchrist Way, Braintree, Essex, CM7 7SY
John Shelley	59 Avenue de la Republique, 33820 St Ciers sur Gironde, France

Stock Round 1

Willem	Rob	Lyndon	Don	John
75 on GLSC	105 on NFSBC	✗	80 on GLSC	+ FT for 20
+ WSR for 40	✗	+ CC for 50	⇨	⇨
Drops out of GLSC auction	⇨	⇨	+ GLSC for 80	⇨
⇨	+ NFSBC for 105	⇨	✗	✗
✗	✗	+ SCFTC for 100	+ LPS/Pres {70}	+ GW/Pres {70}
+ GT/Pres {65}	+ CPR/Pres {65}	+ WR/Pres {75}	+ LPS new	+ GW new
+ GT new	+ CPR new	✗	✗	+ GW new
+ GT new	✗	✗	✗	✗
✗	Priority for SR2			

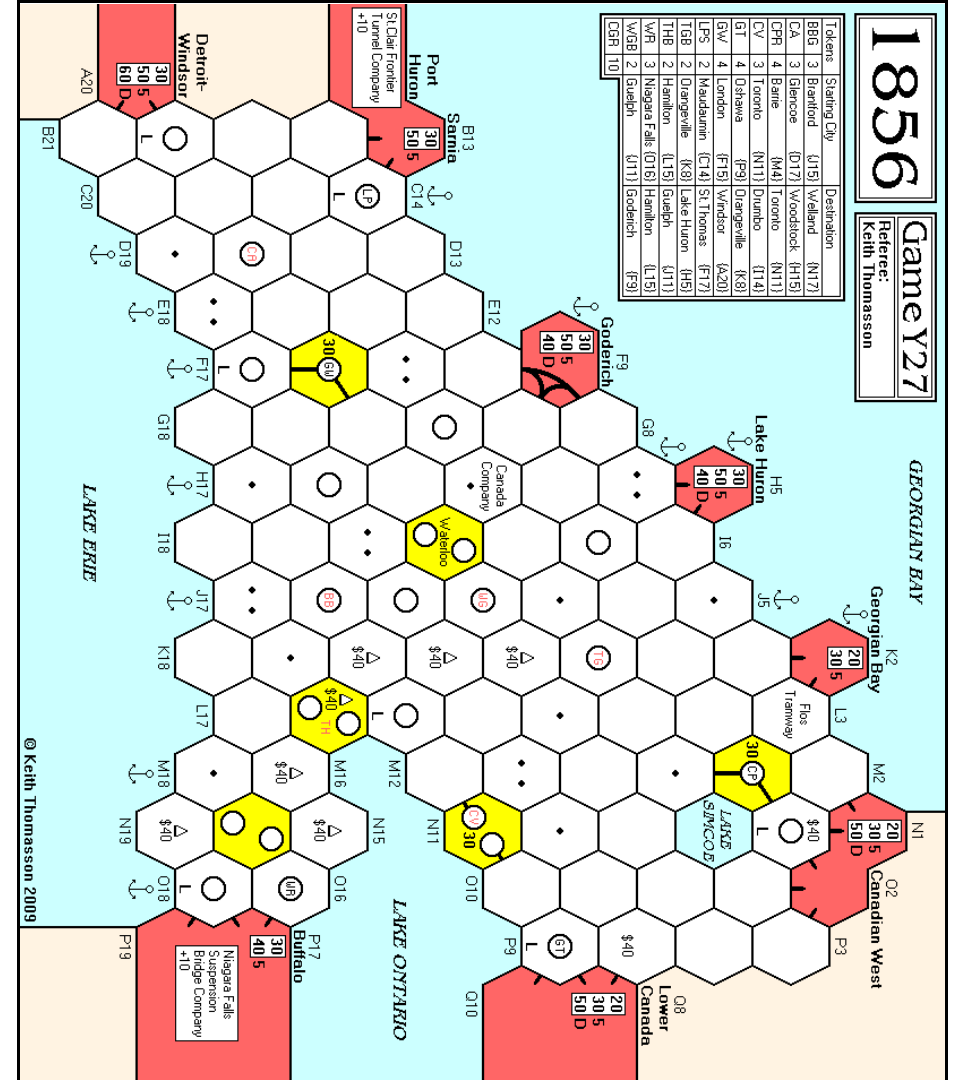
Cash Flow	b/f	SR1	c/f	Value	%	Certs
Willem Moene	300	-300	0	300	20.2▲	4
Rob Thomasson	300	-300	0	295	19.9▼	3
Lyndon Gurr	300	-300	0	300	20.2▲	3
Don Smith	300	-290	10	290	19.5▼	3
John Shelley	300	-300	0	300	20.2▲	4

Portfolio	Privates	BBG	CA	CPR	CV	GT	GW	LPS	TGB	THB	WGB	WR
Willem Moene	WSR	-	-	-	-	4P	-	-	-	-	-	-
Rob Thomasson	NFSBC	-	-	3P	-	-	-	-	-	-	-	-
Lyndon Gurr	CC, SCFTC	-	-	-	-	-	-	-	-	-	-	2P
Don Smith	GLSC	-	-	-	-	-	-	3P	-	-	-	-
John Shelley	FT	-	-	-	-	-	4P	-	-	-	-	-

Bank (new)	10	10	7	10	6	6	7	10	10	10	8
Price (par)			65		65	70	70				75
Bank (pool)	-	-	-	-	-	-	-	-	-	-	-
Price (pool)			65F		65F	70E	70E				75C
Company credit			195		260	280	210				150

Tokens	3	3	4	3	4	4	2	2	2	2	3
Trains											
Bank cash: 10,895	Certificate limit: 13						Trains: 6 x '2', 5 x '3'				
Current operating order:	WR, LPS, GW, GT, CPR										

Tiles	Tile number/Availability					One Operating Round between Stock Rounds						
1/1	2/1	3/3	4/3	5/2	6/2	7/7	8/13	9/13	55/1	56/1	57/4	58/3
69/1												





1861-C27

The last '2' trains go,
but no '3' trains yet.

OR3 - OR4

OR3	Pres	Lay	Run	Pay	Notes	Price	Credit	Loans	Trains
N	SW	-	-	80	Half	-	90F▲	145	- 2
MNN	WM	8:K8:6	-	70	Half	-	90F▲	132	- 2
KR	MH	-	-	70	Half	①	80F▲	91	- 2 2
MK	PC	-	-	70	Half	-	70G▲	100	- 2
SPW	LG	-	-	70	Half	-	70G▲	80	- 2
RO	LG	9:C6:3	-	-	-	②	55G▼	20	- 2
OK	SW	201:C20:6	9:C18:1	-	-	③ ④ ②	50H▼	40	1 2
KK	MH	-	-	-	-	⑤ ②	45H▼	26	2 2
KB	PC	9:B13:3	-	-	-	②	45H▼	0	- 2

Notes: ① 1 to the KK for a '2' train
 ② 100 to the bank for a '2' train
 ③ 20 to the bank for a second tile lay
 ④ 1 loan acquired
 ⑤ 2 loans acquired

OR4	Pres	Lay	Run	Pay	Notes	Price	Credit	Loans	Trains
N	SW	-	-	80	Half	-	100F▲	185	- 2
MNN	WM	-	-	70	Half	-	100F▲	167	- 2
KR	MH	-	-	130	Half	-	90F▲	156	- 2 2
MK	PC	-	-	70	Half	-	80G▲	135	- 2
SPW	LG	-	-	70	Half	-	80G▲	115	- 2
RO	LG	9:D7:3	-	70	Half	-	60G▲	55	- 2
OK	SW	9:C16:1	-	60	Half	①	55H▲	15	- 2
KK	MH	-	-	60	Half	-	50H▲	46	2 2
KB	PC	9:A12:3	-	60	Half	-	50H▲	30	- 2

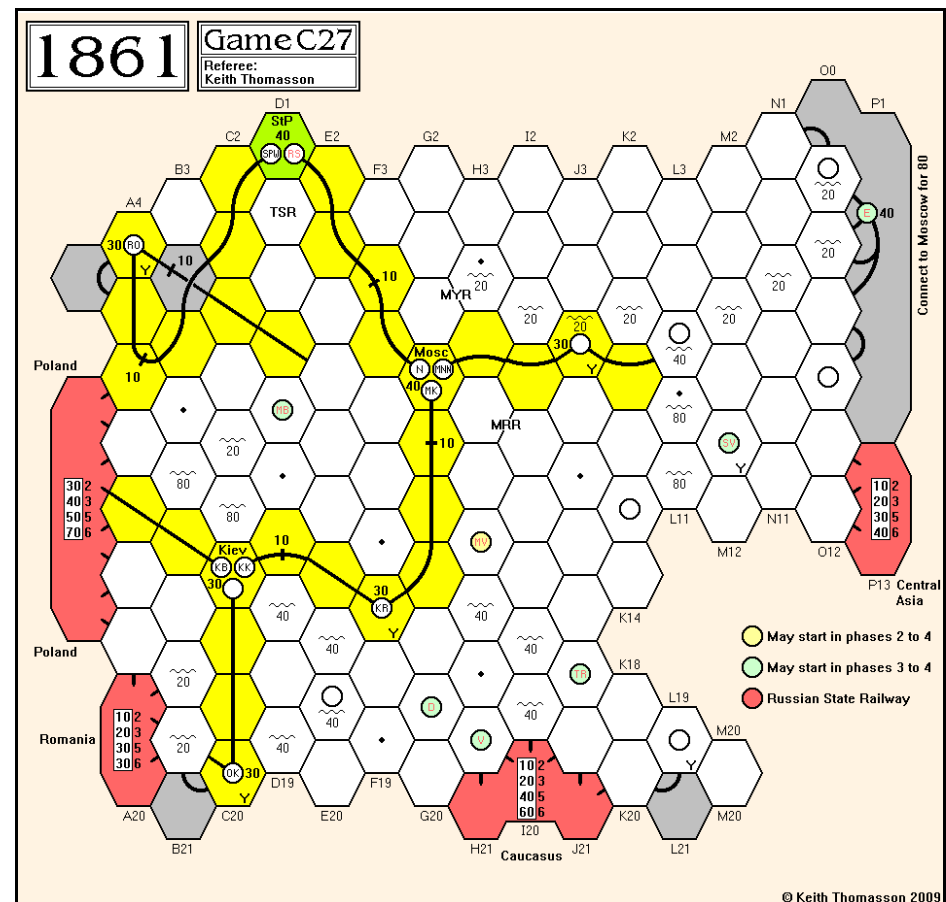
Notes: ① 1 loan repaid

Cash Flow	b/f	OR3	OR4	c/f	Value	%	Certs
Mike Hutton	70	35	95	200	370	19.8▲	2
Pete Campbell	17	75	105	197	447	24.0▲	4
Willem Moene	95	65	65	225	415	22.2▼	2
Stephen Webb	2	50	80	132	317	17.0▲	3
Lyndon Gurr	2	55	90	147	347	18.6▲	3

Portfolio	Privates/Minors	N	KB	KK	KR	MK	MNN	MV	OK	RO	SPW
Mike Hutton	-	-	-	1	1	-	-	-	-	-	-
Pete Campbell	BSSC, MRR	-	1	-	-	1	-	-	-	-	-
Willem Moene	WVR	-	-	-	-	-	1	-	-	-	-
Stephen Webb	TSR	1	-	-	-	-	-	-	1	-	-
Lyndon Gurr	MYR	-	-	-	-	-	-	-	-	1	1

Bank (new)	-	-	-	-	-	-	1	-	-	-
Bank (pool)	-	-	-	-	-	-	-	-	-	-
Price	100F	50H	50H	90F	80G	100F		55H	60G	80G
Loans	-	-	2	-	-	-	-	-	-	-
Company credit	185	30	46	156	135	167		15	55	115
Tokens	-	-	-	-	-	-	-	-	-	-
Trains	2	2	2	2	2	2	2	2	2	2
Bank cash: 14,097	Certificate limit: 1.5						Trains: 7 x '3', 4 x '4'			
Current operating order:	N, MNN, KR, MK, SPW, RO, OK, KK, KB									

Tiles	Tile number/Availability				Two Operating Rounds between Stock Rounds					
	3/1	4/3	5/2	6/2	7/②	8/②	9/②	57/2	58/3	201/1 202/2 621/2
② Yellow track tiles are unlimited										



The map remains decidedly yellow as the first '3' train has yet to be sold. This makes the coming stock round a relatively simple affair. The only option is for someone to start the MV minor, which is the only available minor not yet operating. This prompts me to be cheeky and consider asking for SR3 orders *and* orders for the following two ORs.

Here's the full offer. Send me your orders for stock round 3 really early, and I'll let you know by e-mail who has the MV and where it sits in the operating order. Then you can do your operating round orders as if the stock round had been published separately.

Orders required for the following rounds	By the early deadline
SR3, OR5, OR6	Adjudication can pause between rounds if requested



1870-R24

Another single round.

OR13

OR13	Pres	Lays	Run	Pay	Notes	Price	Credit	Trains
SLSF	MF	20:D19:2	-	280	Yes	275B	155	5
FW	WM	-	-	260	Yes	180B	353	6
TP	SW	14:M14:3	-	310	Yes	140B	597	6
SP	RK	-	-	200	Yes	100B	463	6
IC	SW	14:K16:2	-	210	Yes	100A	1	8.5
MP	DS	9:L17:2	-	210	Yes	90D	0	8
SSW	DS	26:L17:2	-	330	Yes	82B	242	8.5
MKT	RK	-	-	420	Yes	76F	0	10
GMO	MF	9:E18:2	8:C16:1	240	No	64E	842	5
ATSF	WM	24:H5:2	-	210	No	50G	210	10

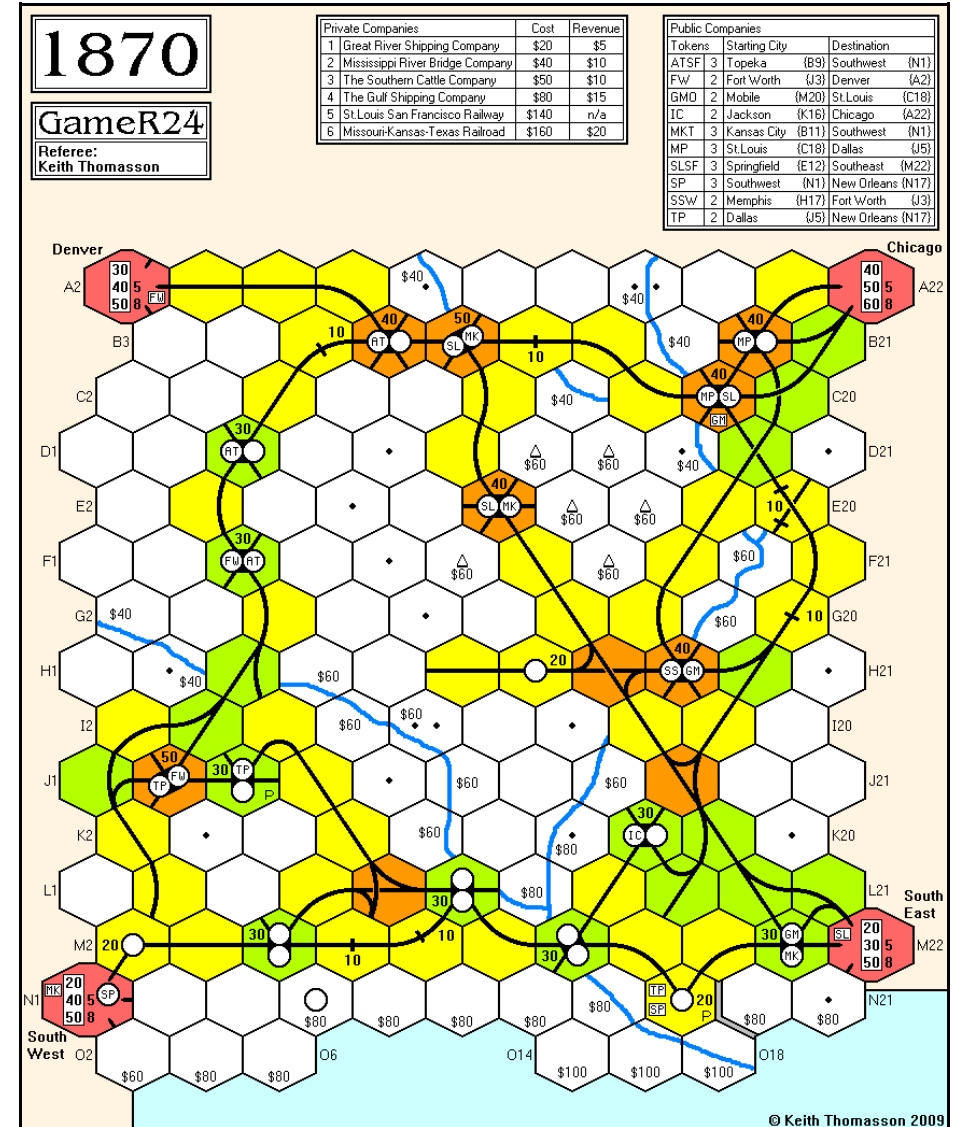
Notes: ① 283 to the TP for a '5' train
② 100 to the bank for terrain costs

Cash Flow	b/f	OR13	c/f	Value	%	Certs
Willem Moene	318	218	536	2,156	19.7	8/13
Roger Krueger	223	372	595	1,779	16.2	12
Mark Frueh	758	256	1,014	3,508	32.0	13
Stephen Webb	59	406	465	2,211	20.2	13
Don Smith	46	312	358	1,294	11.8	9

Portfolio	ATSF	FW	GMO	IC	MKT	MP	SLSF	SP	SSW	TP
Willem Moene	6P	6P	1	-	1	-	-	1	-	-
Roger Krueger	-	-	2	-	6P	-	-	6P	-	-
Mark Frueh	-	1	6P	-	-	-	6P	-	-	2
Stephen Webb	-	-	-	6P	1	1	-	-	-	7P
Don Smith	-	-	-	-	1	5P	-	-	5P	-

Bank (new)	1	2	-	4	-	-	-	3	4	1
Price (par)	90	100	76	100	90	90	100	90	100	100
Bank (pool)	3	1	1	-	1	4	2	-	1	-
Price (pool)	50G	180B	64E	100A	76F	90D	275B	100B	82B	140B
Company credit	210	353	842	1	0	0	155	463	242	597
Redeemed shares	-	-	-	-	-	-	2	-	-	-
Tokens	D	-	-	1+D	-	1+D	-	2	1+D	-
Trains	10	6	5	8.5	10	8	5	6	8.5	6
Bank cash: 6,169 Certificate limit: 13 Trains: 10's										
Current operating order: SLSF, FW, TP, SP, IC, MP, SSW, MKT, GMO, ATSF										

Tiles	Tile number/Availability										Three Operating Rounds between Stock Rounds	
1/1	2/1	3/3	4/3	5/1	6/1	7/8	8/6	9/8	55/-	56/1	57/4	58/2
69/1	14/-	15/-	16/1	17/2	18/2	19/2	20/1	23/-	24/2	25/3	26/1	27/2
28/1	29/1	141/2	142/2	143/1	144/1	39/1	40/2	41/2	42/3	43/2	44/-	45/1
46/2	47/2	63/-	70/2	145/2	146/2	147/2	170/2	171/1	172/1			



Orders required for the following rounds

By the early deadline

OR14, SR8

Adjudication can pause between rounds if requested



1870-Y26

Two new companies are floated - both by Adam.

OR4 - SR5

OR#	Pres	Lays	Run	Pay	Notes	Price	Credit	Trains
SLSF	AR	9:K12:2	57:L11:2	120	Yes	① ② ③ 110C▲	364	2 2 2 2
MKT	LG	9:E6:2	57:F5:2	80	Yes	- 90D▲	440	2 2
GMO	MH	5:M20:2	7:L21:4	-	-	④ ⑤ 64F▼	260	3 2

- Notes:
- ① 60 to the bank for terrain costs
 - ② 100 to the bank for a token in L11
 - ③ 80 to the bank for a '2' train
 - ④ 260 to the bank for a '2' train and a '3' train
 - ⑤ 160 to Mike for the GSC private

Stock Round 5

Adam	Don	Lyndon	Willem	Mike
- 4 SLSF (82F) (Don gains Pres) - 1 MKT (82E) + ATSF/P (68)	✗	+ MKT pool	+ GMO new	✗
+ ATSF new	✗	✗	✗	+ SLSF pool
+ ATSF new	✗	✗	✗	✗
+ ATSF new	✗	✗	✗	✗
+ ATSF new (floated)	✗	✗	✗	+ ATSF new
- 3 ATSF (55I) + SP/P (72)	✗	✗	✗	✗
+ SP new	✗	✗	✗	✗
+ SP new	✗	✗	✗	✗
+ SP new	✗	✗	✗	✗
+ SP new (floated)	✗	✗	✗	✗
✗	Priority for SR6			

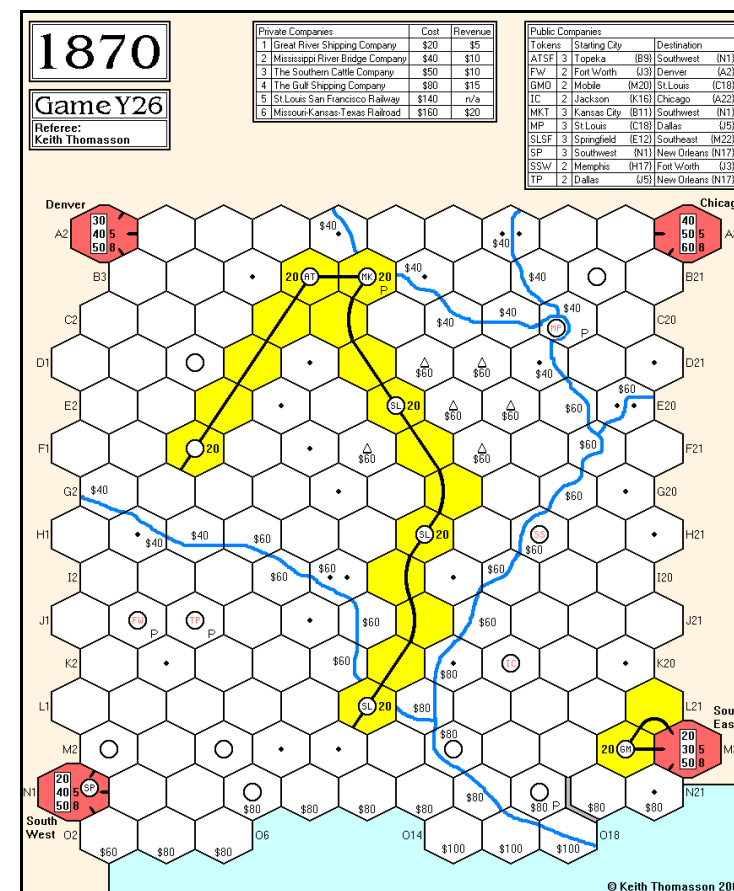
[illegible]

Bank (new)	3	10	3	10	-	10	-	4	10	10
Price (par)	68		68		68		100	72		
Bank (pool)	3	-	-	-	-	-	3	-	-	-
Price (pool)	551		64F		90D		82F	72E		
Company credit	680		260		440		364	720		
Redeemed shares	-		-		1		-	-		
Tokens	3+D	2+D	2+D	2+D	2+D	3+D	D	3+D	2+D	2+D
Trains	-		3 2	-	2 2		2 2	-		

Bank cash: 9,271	Certificate limit: 13	Trains: 5 x '3', 5 x '4'...
Current operating order:	MKT, SLSF, SP, GMO, ATSF	

Cash Flow	b/f	OR4	SR5	c/f	Value	%	Certs
Don Smith	89	54	0	143	519	17.2▼	4
Lyndon Gurr	39	57	-82	14	656	21.7▲	7
Willem Moene	56	70	-68	58	676	22.4▼	7
Mike Hutton	12	175	-150	37	558	18.5▲	6/7
Adam Romoth	63	56	-106	13	610	20.2▲	5/7

Tiles	Tile number/Availability					Two Operating Rounds between Stock Rounds						
1/1	2/1	3/3	4/6	5/-	6/1	7/8	8/18	9/17	55/1	56/1	57/1	58/4
69/1	14/4	15/4	16/2	17/2	18/2	19/2	20/2	23/4	24/4	25/3	26/2	27/2
28/2	29/2	141/2	142/2	143/1	144/1							



Orders required for the following rounds

By the early deadline

OR5, OR6

Adjudication can pause between rounds if requested



1870-O27

Welcome to the ATSF.

OR2 - SR3

OR2	Pres	Lays	Run	Pay	Notes	Price	Credit	Trains
SLSF	LR	8:G14:5	57:H13:2	40	Yes ① ②	100A	552	3 2
MP	DS	8:C20:6	9:B21:2	100	Yes ①	76D	410	3 2 2
MKT	RT	8:C10:2	9:D11:1	80	Yes ① ③	72E	36	3 2 2
SP	JS	9:N5:3	57:N7:3	100	Yes ④ ① ⑤ ⑥	68F	36	3 2 2

- Notes: ① 180 to the bank for a '3' train
 ② 100 to Lionel for the SCC private
 ③ 320 to Rob for the MKT private
 ④ 80 to the bank for terrain costs
 ⑤ 200 to John for the GRSC and GSC privates
 ⑥ Open port token placed in N7

Stock Round 3

Don	Lionel	Rob	John
+ MKT new	+ SLSF new	- 3 MKT {+60H} + ATSF/Pres {100}	+ SP new
✗	+ SLSF new	+ ATSF new	+ MP new
✗	✗	+ ATSF new	+ MP new
✗	✗	+ ATSF new	+ MKT pool
✗	✗	+ ATSF new (floated)	✗
✗	✗	✗	Priority for SR4

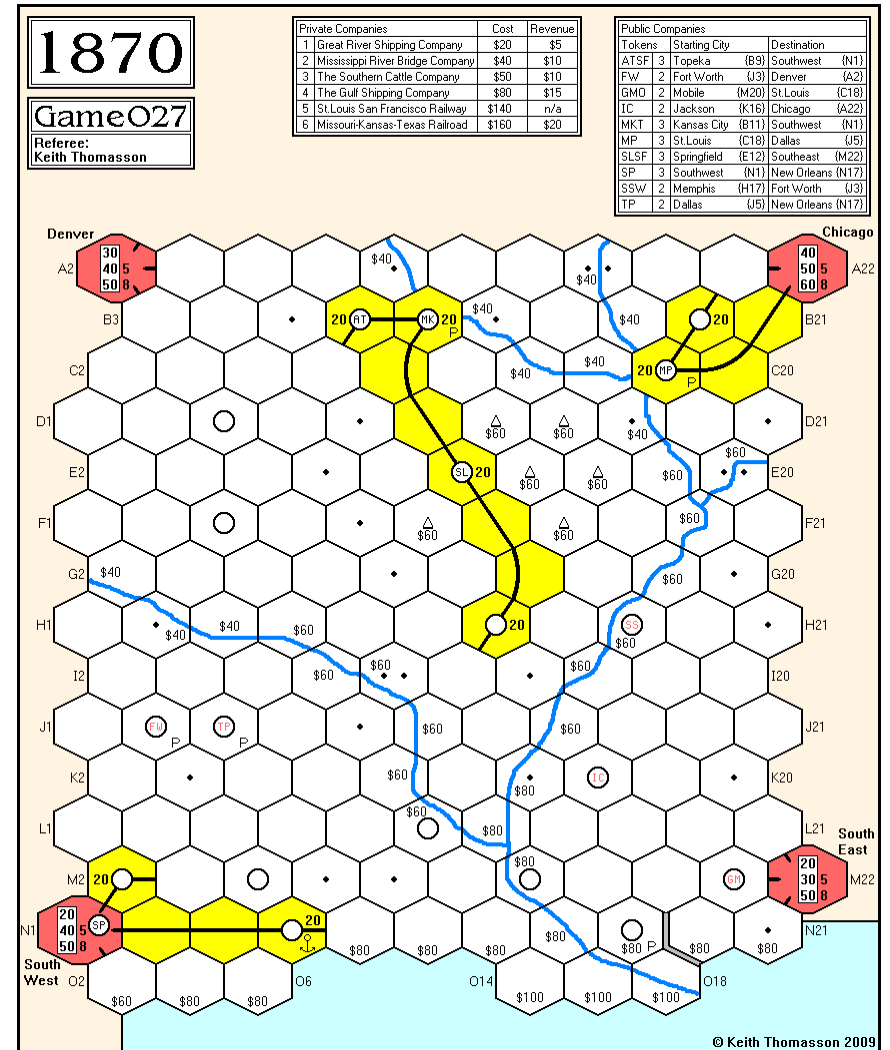
Cash Flow	b/f	OR2	SR3	c/f	Value	%	Certs
John Shelley	25	280	-280	25	739	26.0	8/9
Don Smith	79	60	-72	67	619	21.8	5/6
Lionel Robbins	57	154	-200	11	681	24.0	5/7
Rob Thomasson	20	388	-384	24	804	28.3	5/7

Portfolio	PCs	ATSF	FW	GMO	IC	MKT	MP	SLSF	SP	SSW	TP
John Shelley	-	-	-	-	-	1	3	-	6P	-	-
Don Smith	-	-	-	-	-	1	6P	-	-	-	-
Lionel Robbins	-	-	-	-	-	2	1	4P	1	-	-
Rob Thomasson	-	6P	-	-	-	3P	-	-	-	-	-

Bank (new)	4	10	10	10	1	-	6	2	10	10
Price (par)	100				72	76	100	68		
Bank (pool)	-	-	-	-	2	-	-	-	-	-
Price (pool)	100A				60H	82C	100A	68F		
Company credit	1,000				36	410	552	36		
Redeemed shares	-				-	-	-	1		
Tokens	3+D	2+D	2+D	2+D	2+D	2+D	2+D	2+D	2+D	2+D
Trains	-				3 2 2	3 2 2	3 2	3 2 2		

Bank cash: 9,839 Certificate limit: 14 Trains: 2 x '3', 5 x '4'
 Current operating order: SLSF, ATSF, MP, SP, MKT

Titles	Tile number/Availability					Two Operating Rounds between Stock Rounds							
1/1	2/1	3/3	4/6	5/-	6/-	7/9	8/19	9/18	55/1	56/1	57/1	58/4	
69/1	14/4	15/4	16/2	17/2	18/2	19/2	20/2	23/4	24/4	25/3	26/2	27/2	
28/2	29/2	141/2	142/2	143/1	144/1								



Orders required for the following rounds

By the early deadline

OR3, OR4

Adjudication can pause between rounds if requested



1895-X24

Steve gets both of the '12H' trains.

OR11 - OR12

OR11 Pres	Lays	Run	Pay	Mines	Notes	Price	Credit	Trains
STA ST	889:F12:1	-	240	No	①	170B*	59	12H
SD ST	125:D18:1	-	-	-	②	160C*	0	12H
NS RK	-	-	520	Yes	-	135B*	218	10H 8H
OME TF	9:B2:5	-	220	Yes	-	135B*	112	10H
OB RK	-	-	240	Yes	-	70F*	625	8H

Notes: ① 600 to the bank for a '12H' train
② 600 to the bank for a '12H' train, partly funded by 265 from Steve

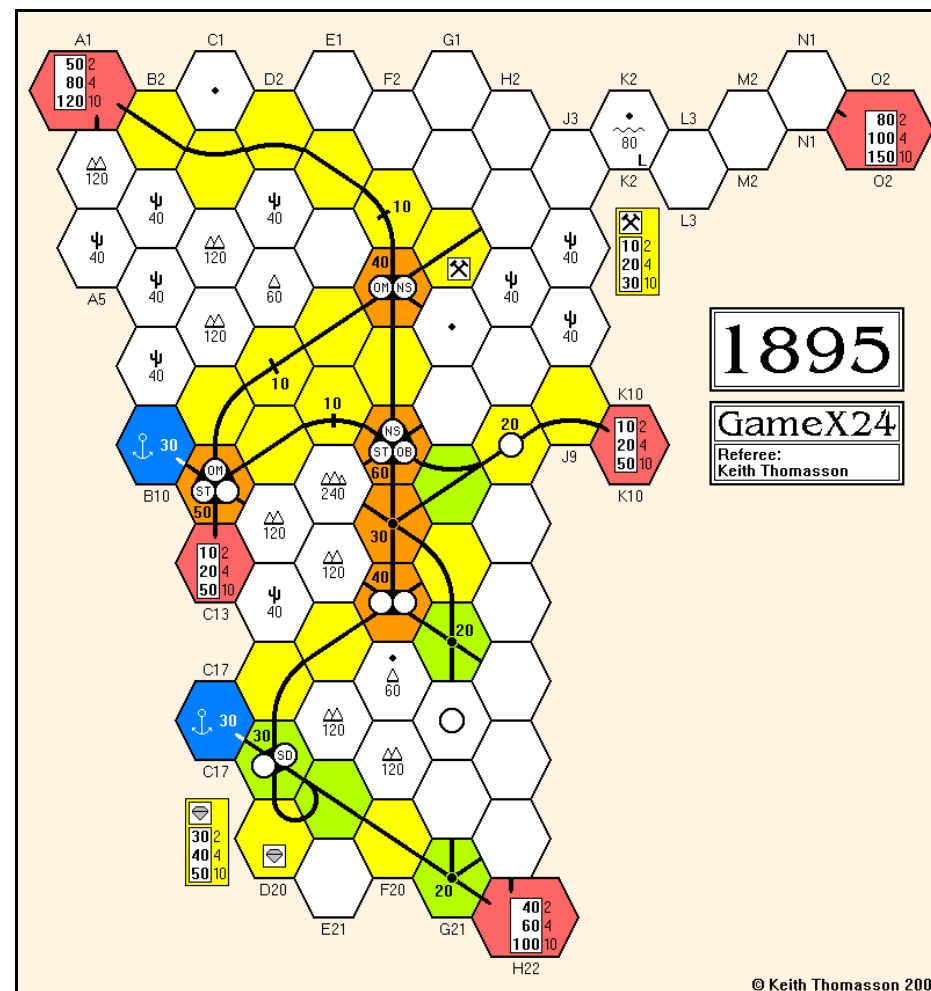
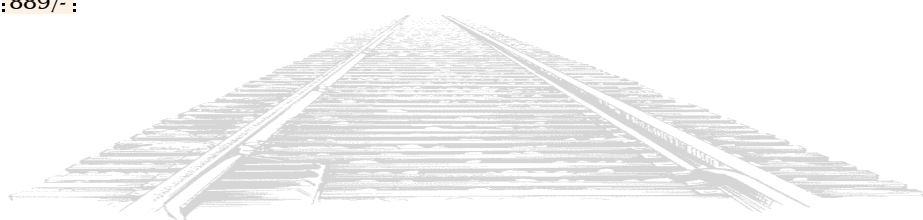
OR12 Pres	Lays	Run	Pay	Mines	Notes	Price	Credit	Trains
STA ST	887:Q21:6	-	350	Yes	-	190B*	59	12H
SD ST	888:G15:1	-	310	Yes	-	180C*	0	12H
NS RK	-	-	530	Yes	-	150B*	218	10H 8H
OME TF	125:F6:2	-	230	Yes	-	150B*	112	10H
OB RK	-	-	240	Yes	-	80F*	649	8H

Cash Flow	b/f	OR11	OR12	c/f	Value	%	Certs
Steve Thomas	306	-177	461	590	3,240	32.1*	13
Tim Franklin	41	284	428	753	2,863	28.4*	13
Roger Krueger	1,221	508	546	2,275	3,985	39.5*	13

Portfolio	STA	OME	SD	OB	NS
Steve Thomas	7P	4	4P	-	-
Tim Franklin	3	6P	1	2	2
Roger Krueger	-	-	1	6P	7P

Bank (new)	-	-	-	1	-
Bank (pool)	-	-	4	1	1
Price	190B	150B	180C	80F	150B
Company credit	59	112	0	649	218
Tokens	2	1	2	2	1
Trains	12H	10H	12H	8H	10H 8H
Bank cash: 1,872	Certificate limit: 13				Trains: 5 x '16H'
Current operating order:	STA, SD, NS, OME, OB				

Tiles	Tile number/Availability										Three Operating Rounds between Stock Rounds					
3/2	4/1	7/4	8/6	9/5	57/2	58/1	814/1	815/1	14/2	15/2	16/1	17/1				
18/1	19/1	20/1	23/1	24/2	25/2	26/1	27/2	28/2	29/2	38/1	887/-	888/-				
39/1	40/1	41/1	42/1	43/1	44/1	45/1	46/1	47/1	70/1	125/-	849/-	850/-				
889/-																



Orders required for the following rounds

By the early deadline

OR13, SR8

Adjudication can pause between rounds if requested



18GA-D26

The G&F changes hands.

SR8

Stock Round 8

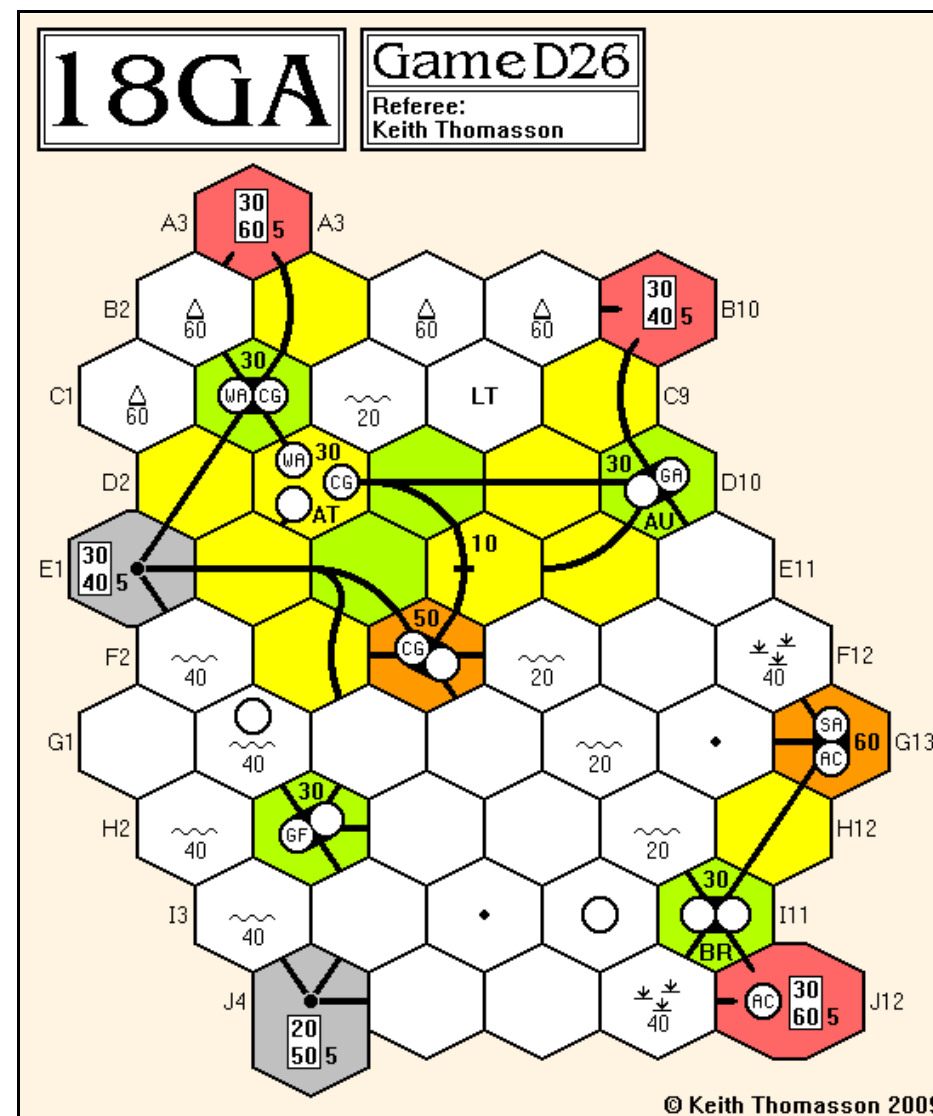
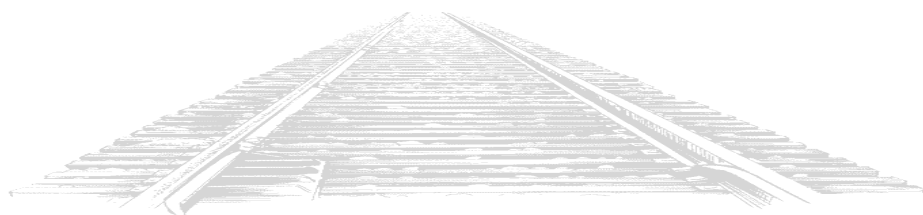
Mike	Lyndon	Don	Pete
+ GA pool	- 4 G&F (Pres to Pete)	+ W&A pool	+ SAL pool
	+ GA pool		
+ SAL new	+ SAL new	✗	+ G&F pool
✗	✗	✗	+ G&F pool
✗	✗	✗	+ G&F pool
✗	✗	✗	✗
Priority for SR9			

Cash Flow	b/f	SR8	c/f	Value	%	Certs
Don Smith	215	-100	115	1,245	22.1▲	9/10
Pete Campbell	258	-190	68	1,258	22.4▼	6/16
Mike Head	335	-220	115	1,495	26.6▲	11/12
Lyndon Gurr	383	-80	303	1,623	28.9▲	10/12

Portfolio	ACL	CoG	G&F	GA	SAL	W&A
Don Smith	1	1	-	6P	-	2
Pete Campbell	6P	-	6P	-	6P	1
Mike Head	1	6P	-	3	1	1
Lyndon Gurr	1	3	1	1	1	6P

Bank (new)	1	-	2	-	2	-
Par price	70	70	55	70	110	55
Bank (pool)	-	-	1	-	-	-
Pool price	50D	120B	30G	120C	100B	110C
Company credit	1	0	1	471	601	332
Tokens	2	1	1	3	2	-
Trains	4 3	4 3	-	3	5	4 3
Bank cash: 5,993 Certificate limit: 13 Trains: 1 x '5', 2 x '6'...						
Current operating order: GA, CoG, W&A, SAL, ACL, G&F						

Tiles		Tile number/Availability		Three Operating Rounds between Stock Rounds											
3/3	4/3	5/2	6/2	7/5	8/7	9/7	57/5	58/2	451/1	14/2	15/2	16/1			
17/1	19/1	20/1	23/3	24/4	25/1	26/2	27/1	28/1	29/2	141/2	142/2	143/2			
452/1	453/1	454/1	39/2	40/1	41/3	42/3	43/2	44/1	45/2	46/2	47/2	63/4			
70/1	455/1	456/1	457/1	458/-	459/-										



Orders required for the following rounds

By the early deadline

OR9, OR10

Adjudication can pause between rounds if requested



18GA-Z27

We've almost completed
the first round.

NEW GAME

Welcome to our second game of 18GA. In common with recent 18xx games, the first stock round was run via e-mail. The players for this game are as follows.

Mark Stretch 41 Burma Close, Evesham, Worcestershire, WR11 1GZ
Mike Head 128 Mendip Road, Halesowen, West Midlands, B63 1JH
Don Smith 16 Gilchrist Way, Braintree, Essex, CM7 7SY

Stock Round 1

Mark	Mike	Don
155 on M&B	105 on OS	75 on W&S
+ LT for 20	+ Midland for 40	Gets W&S for 75
⇒	Gets OS for 105	⇒
Gets M&B for 155	⇒	+ CoG/Pres (90)
+ ACL/Pres (70)	+ W&A/Pres (70)	+ CoG new
+ ACL new	+ W&A new	+ CoG new
+ ACL new	+ W&A new	+ CoG new (floated)
+ ACL new	+ W&A new	+ W&A new (floated)
+ ACL new (floated)	✗	✗
✗	Priority for SR2	

Cash Flow	b/f	SR1	c/f	Value	%	Certs
Mark Stretch	600	-595	5	685	36.5▲	8
Mike head	600	-495	105	595	31.8▼	6
Don Smith	350	-595	5	595	31.8▲	6

Portfolio	Privates	ACL	CoG	G&F	GA	SAL	W&A
Mark Stretch	LT M&B	6P	1	-	-	-	-
• Mike Head	Midland OS	-	-	-	-	-	5P
Don Smith	W&S	-	5P	-	-	-	1

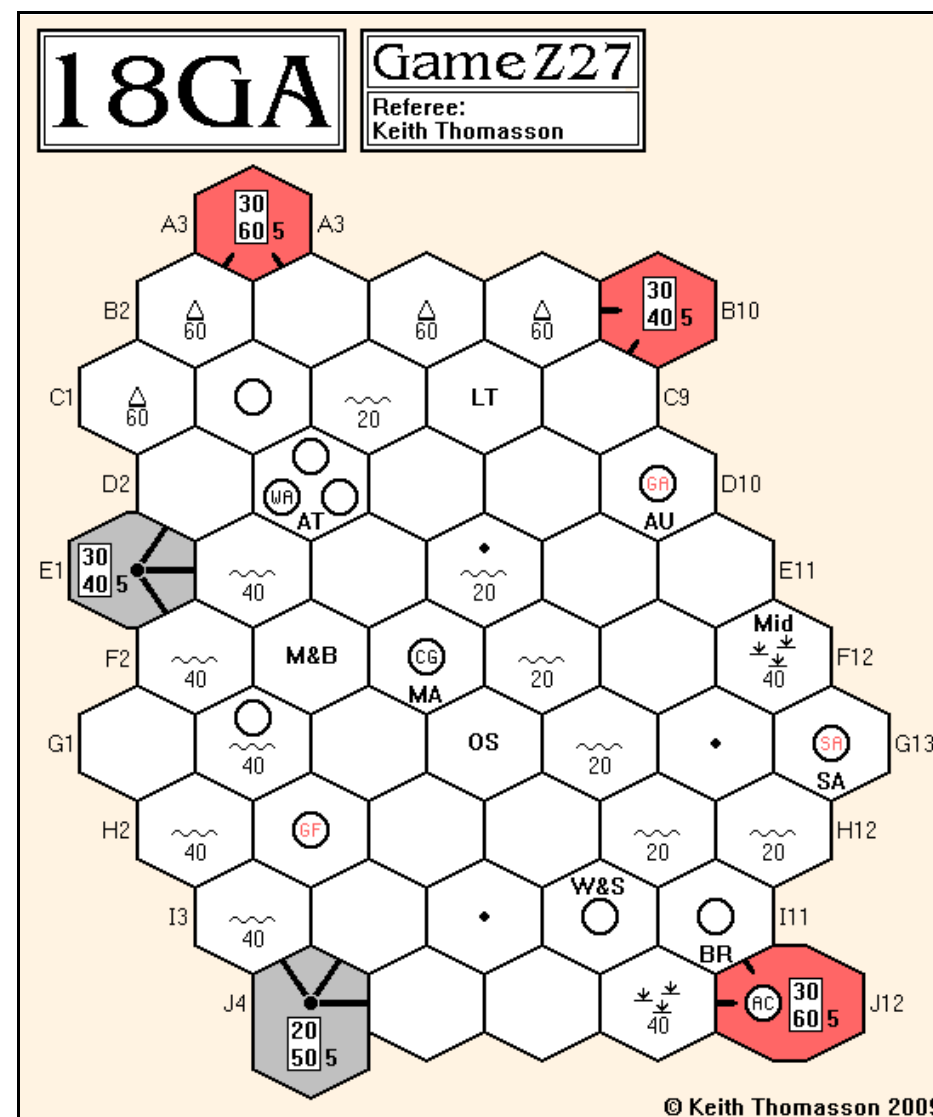
Bank (new)	4	4	10	10	10	4
Par price	70	90				70
Bank (pool)	-	-				-
Pool price	70C	90B				70C
Company credit	700	900				700
Tokens	4	4	2	4	3	2
Trains	-	-				-

Bank cash: 5,585 Certificate limit: 15 Trains: 5 x '2', 4 x '3'
Current operating order: CoG, ACL, W&A

Tiles Tile number/Availability One Operating Round between Stock Rounds

3/3	4/3	5/2	6/2	7/5	8/11	9/10	57/4	58/3	451/1
-----	-----	-----	-----	-----	------	------	------	------	-------

To be completely correct, you should note that Mike has the opportunity to buy one more share before the close of the first stock round, but I'm guessing he is away and unable to respond in time. Just bear in mind that Don may actually have the priority for SR2.



Orders required for the following rounds

By the early deadline

OR1, SR2

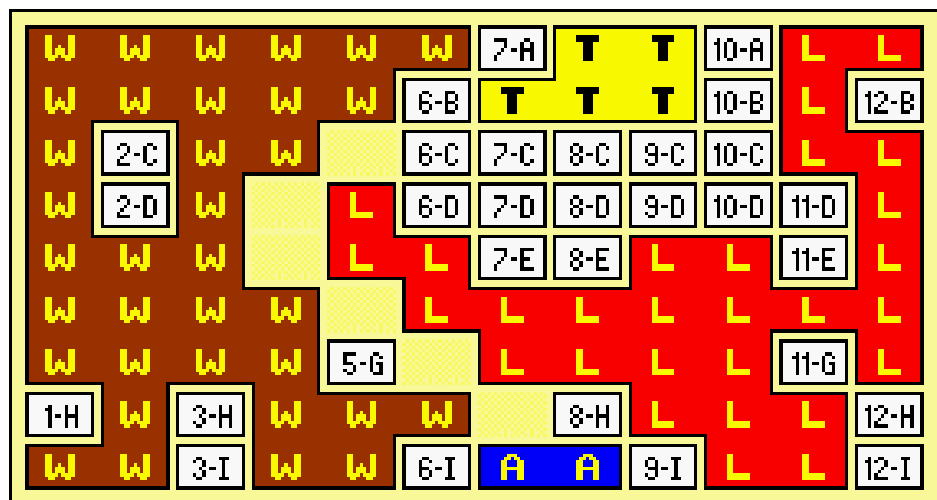


ACQUIRE 52

Luxor swallows
another minor chain.

ROUND 11

John C 3-G Buys 3 Continental @ £500.
Colin 6-F Luxor takes over Continental, bonuses for John C (£5,000) and Michael (£2,500), Colin sells 1 for £500, Tony sells 3 for £1,500, Michael sells 8 for £4,000, John C sells 10 for £5,000. {Dead tiles: 4-D 4-E 5-C 5-F} Buys 3 Tower @ £500.
Tony 4-B No purchases.
Michael 10-G Buys 3 Tower @ £500.
John M 1-C Buys 1 Tower @ £500, 2 American @ £300.
John C 4-C Buys 3 American @ £300.



	Lux	Tow	Ame	Fes	Wor	Con	Imp	Cash	Value
John Colledge	-	12	5	-	-	-	-	£19,600	£35,100
Colin Sharpe	11	3	-	-	6	-	-	£600	£24,200
Tony Wilcock	-	-	-	-	9	-	-	£6,300	£20,300
Michael Graystone	11	3	-	-	-	-	-	£33,800	£51,400
John Marsden	3	1	4	-	10	-	-	£8,200	£33,800
Bank Stock	-	6	16	25	-	25	25		
Chain Size	29	5	2	-	35	-	-		
Chain Value	800	500	300	-	1000	-	-		

Playing sequence

Colin, Tony, Michael, John M, John C, Colin again

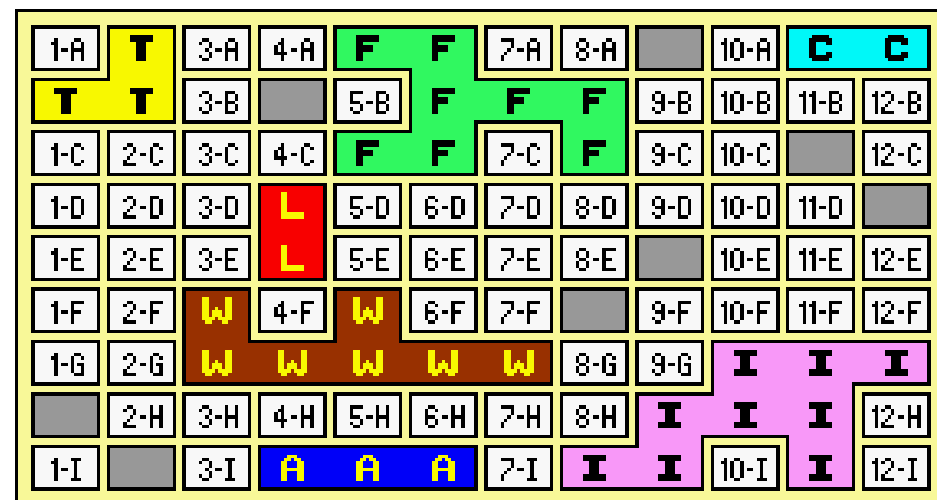


ACQUIRE 53 {SP}

No major changes this time.

ROUND 7

John 5-C {Uses '3 Free' Power} Takes 3 American.
Colin 6-I {Uses 'Buy 5' Power} Buys 5 Imperial @ £800.
Richard 11-C {Uses 'Buy 5' Power} Buys 5 American @ £400.
Michael 9-E Buys 3 Luxor @ £200.
John 11-I No purchases.



	Lux	Tow	Ame	Fes	Wor	Con	Imp	Cash	Value
Richard Lunn	-	-	5	10	3	4	1	£1,100	£30,600
Michael Graystone	9	-	5	3	1	5	3	£1,700	£19,700
John Colledge	7	-	6	3	-	-	6	-	£21,700
Colin Sharpe	3	7	-	7	2	4	6	£800	£34,700
Bank Stock	6	18	9	2	19	12	9		
Chain Size	2	3	3	8	7	2	9		
Chain Value	200	300	400	700	700	400	800		

Powers used: Richard: 3F/B5/T5 Michael: T2/T5 John: 3F/T5 Colin: B5/T5/P4

Playing sequence

Colin, Richard, Michael, John, Colin again





ACQUIRE 54

A quiet round.

ROUND 3

Tony 4-A Buys 3 Luxor @ £300.
Bob 1-C Buys 3 American @ £400.
Michael 9-E Buys 3 Luxor @ £300.
Kevin 10-G Buys 3 Tower @ £200.
Tony 11-I Buys 3 Luxor @ £300.

1-A	2-A	3-A		5-A	6-A	7-A	8-A	9-A	10-A	11-A	12-A
1-B	2-B	3-B	4-B	5-B	6-B	7-B	8-B	9-B	10-B	11-B	12-B
	2-C	3-C	4-C	5-C	6-C	7-C	8-C	9-C	10-C	11-C	12-C
1-D	2-D	3-D	4-D	5-D	6-D	7-D	8-D	9-D	10-D	11-D	
1-E	2-E	A	A	5-E	6-E	7-E	8-E		10-E	11-E	12-E
	2-F	3-F	A	5-F	6-F	7-F	I	9-F	10-F	11-F	12-F
1-G	T	3-G	4-G	5-G	6-G	7-G	I	I	I	11-G	12-G
1-H	T	3-H	4-H	5-H	L	L	8-H	I	10-H	11-H	12-H
1-I	2-I	3-I	4-I	5-I	L	7-I	8-I	9-I	10-I		12-I

	Lux	Tow	Ame	Fes	Wor	Con	Imp	Cash	Value
Michael Graystone	6	-	4	-	-	-	-	£3,300	£11,500
Kevin Lee	7	3	-	-	-	-	3	£2,100	£13,900
Tony Wilcock	6	4	-	-	-	-	-	£3,600	£9,000
Bob Coull	-	3	3	-	-	-	4	£2,700	£16,800
Bank Stock	6	15	18	25	25	25	18		
Chain Size	3	2	3	-	-	-	5		
Chain Value	300	200	400	-	-	-	700		

Playing sequence

Bob, Michael, Kevin, Tony, Bob again



BREAKING AWAY 19

Our first rider is dropped.
Dropped dead is more like it.

ROUND 8

Pos	Riders	New
72	Tobacco	3
71	-	
70	Cheko	3
69	Betty Grable	4
68	-	
67	-	
66	-	
65	-	
64	Cocaine	3
63	Gee Jay Rene Alcohol	4
62	Agricola	7
61	Gaynor of the Damned Arturo Ross	8
60	Rakhir the Red Archer Dingle Fingle Rory	11
59	-	
58	Rhys Barry Gibb	3
57	Olmstead Berry Gordy	5
56	Moonglum	7
55	Bob Geldof Pierce	8
54	-	
53	Carter Ward	3

Dennis Frank (11) Arkham Crew:			
A	Olmstead (5)	3	3 5 9
B	Pierce (6)		3 8 12
C	Carter		3 4 14
D	Ward		3 3 15
Steve Ham (13) Team BG:			
A	Bob Geldof	4	5 8 15
B	Berry Gordy (8)		5 6 7
C	Betty Grable (1)		3 4 11
D	Barry Gibb (4)		3 3 3
Richard Lunn (5) Here Come the Clowns:			
A	Gee Jay		1 4 9
B	Dingle Fingle		5 5 11
C	Cheko (2)		3 3 10
D	Arturo (3)		3 6 8
Greg Payne Not My Addictions:			
A	Tobacco	3	3 8 10
B	Alcohol		4 4 7
C	Cocaine		3 3 13
D	Agricola		3 3 7
Jim Reader (10) Eternal Companions:			
A	Moonglum (10)	4	4 7 9
B	Rakhir the Red Archer		3 8 11
C	Gaynor of the Damned		5 8 9
D	Jhary a Conel		Dropped:
Roger Trethewey Riviera Riders:			
A	Rene		4 4 4
B	Rhys		3 3 3
C	Rory		4 11 13
D	Ross		3 3 8



However hard you think your trainer is, be glad you're not on the *Eternal Champions* team. The report may say that Jhary a Conel has been dropped, but word has reached me that he died by the hand of Elric Stormbringer as payment for his poor performance.

Orders required

Cards for round nine



AGRICOLA 2

Kevin is still the only farmer with a pasture.

ROUND 8

Allan gains 1 food (Duck Pond). Kevin gains 1 food (Chicken Coop).

Actions

Mike +3 wood (gains 5 wood)

Allan Start Player - Helpful Neighbours (costs 1 clay)
Allan gains 1 reeds in exchange for his 1 clay and passes this card to Marcus - you pay 1 wood or 1 clay when you play this card and gain 1 stone or 1 reeds

Marcus +1 reeds (gains 2 reeds)

Kevin Occupation - Carpenter (costs 1 food)
To extend his home, Kevin only needs 3 of the appropriate resource and 2 reeds

Mike Building and/or Stables - builds 3 rooms and 1 stable (costs 3 reeds, 8 wood)

Allan Renovate (costs 1 reeds) - Madonna Statue
Allan discards his Bread Paddle and Fireplace to play the Madonna Statue

Marcus Take 1 reeds, 1 stone, 1 food (gains 1 reeds, 1 stone, 1 food)

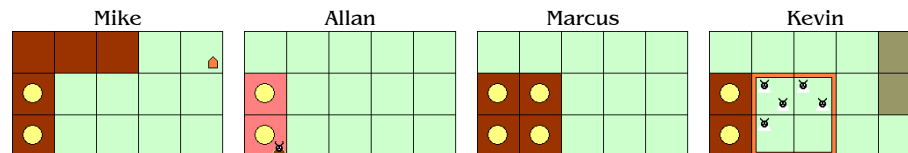
Kevin Take 1 grain (gains 1 grain)

Marcus Family Growth - Writing Desk (costs 1 wood)
Whenever Marcus plays an Occupation he can play a second occupation for a cost of 2 food

+1 wood {4 wood}	+2 wood {6 wood}	+3 wood {3 wood}	+1 clay {5 clay}	+2 clay {4 clay}	Private clay pit {7 clay} {3 food ⇒ Mike}
+1 reeds {1 reeds}	+1 food Catch Fish {3 food}	+1 food Travelling Players {4 food}	Take 1 grain	Take 2 food Day Labourer	Take 1 reeds, 1 stone, 1 food
Building and/or Stables	Play 1 Occupation {0-1 food}	Play 1 Occupation {1-1-2 food}	Plough 1 field	Start Player and/or Minor Imp	Fences
1 Major or Minor imp	+1 sheep {2 sheep}	Sow and/or Bake bread	+1 stone {2 stone}	Family Growth then 1 Minor Imp	Renovate then 1 Improvement
+1 wild boar {2 wild boar}	Take 1 vegetable				

The remaining Major improvements and their costs are:

- ◇ Basket Weaver {2 reeds, 2 stone}
- ◇ Fireplace {2 clay}
- ◇ Fireplace {3 clay}
- ◇ Pottery {2 clay, 2 stone}
- ◇ Stone Oven {1 clay, 3 stone}
- ◇ Well {1 wood, 3 stone}



Mike Hutton	Food	Fields	Pasture	Grain	Veg	Sheep	Boar	Cattle
	1	-	-	-/-	-/-	-	-	-
	Clay	Reeds	Stone	Wood	House	Family	VPs	
	1	1	1	1	Wood/5	2	-6	
Occupations	Clay Digger, Puppeteer, Thatcher							
Improvements	Axe, Cabinet Maker {2}, Clay Oven {2}							

Allan Stagg	Food	Fields	Pasture	Grain	Veg	Sheep	Boar	Cattle
	4	-	-	-/-	-/-	-	1	-
	Clay	Reeds	Stone	Wood	House	Family	VPs	
	-	-	-	7	Clay/2	2	-8	
Occupations	Pig Catcher, Renovator, Wood Carver							
Improvements	Cooking Hearth {1}, Duck Pond {1}, Madonna Statue {2}							

Marcus Pratt	Food	Fields	Pasture	Grain	Veg	Sheep	Boar	Cattle
	2	-	-	-/-	-/-	-	-	-
	Clay	Reeds	Stone	Wood	House	Family	VPs	
	6	3	1	1	Wood/4	4	4	
Occupations	Basket Maker, Guildmaster, Reeve {3}, Tutor {3}							
Improvements	Beanfield {1}, Bookshelf {1}, Copse {1}, Writing Desk {1}							

Kevin Lee	Food	Fields	Pasture	Grain	Veg	Sheep	Boar	Cattle
	4	2	1	2/-	-/-	5	-	-
	Clay	Reeds	Stone	Wood	House	Family	VPs	
	-	2	1	-	Wood/2	2	3	
Occupations	Animal Handler, Carpenter							
Improvements	Chicken Coop {1}, Cooking Hearth {1}							

Orders required

Actions for the family, starting with Allan

Harvest - after round 9



AGRICOLA 3

Everyone now
has an occupation.

ROUND 2

Actions

Pete Occupation - Master Forester (costs 1 food)

Pete's Master Forester manages a private wood that gains 2 wood each round - anyone who uses this action must pay Pete 2 food

Jim +2 wood (gains 4 wood)

Allan Occupation - Fence Overseer (costs 1 food)

Each round, for the cost of 1 food, Allan can fence a pasture of 1 farmyard space around a stable he has just built, without spending any wood

Kevin Take 1 reeds, 1 stone, 1 food (gains 1 reeds, 1 stone, 1 food)

Pete Plough 1 field

Jim +3 wood (gains 3 wood)

Allan Start Player - Greenhouse (costs 2 wood)

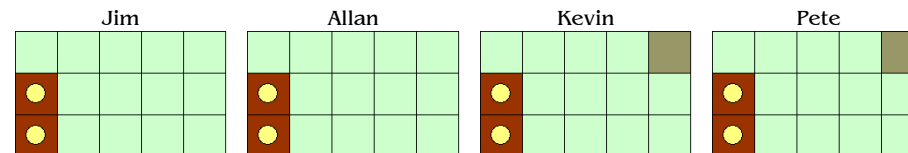
At the start of rounds 6 and 9, Allan can pay 1 food to take 1 vegetable

Kevin +1 reeds (gains 2 reeds)

+1 wood {3 wood}	+2 wood {2 wood}	+3 wood {3 wood}	Private wood {2 wood} {2 food ⇒ Pete}	+1 clay {3 clay}	+2 clay {4 clay}
+1 reeds {1 reeds}	+1 food Catch Fish {3 food}	+1 food Travelling Players {3 food}	Take 1 grain	Take 2 food Day Labourer	Take 1 reeds, 1 stone, 1 food
Building and/or Stables	Play 1 Occupation {0-1 food}	Play 1 Occupation {1-1-2 food}	Plough 1 field	Start Player and/or Minor Imp	Sow and/or Bake Bread
Fences	+1 sheep {1 sheep}				

The remaining Major improvements and their costs are:

- ◇ Basket Weaver {2 reeds, 2 stone}
- ◇ Cabinet Maker {2 wood, 2 stone}
- ◇ Clay Oven {3 clay, 1 stone}
- ◇ Cooking Hearth {4 clay or Fireplace}
- ◇ Cooking Hearth {5 clay or Fireplace}
- ◇ Fireplace {2 clay}
- ◇ Fireplace {3 clay}
- ◇ Pottery {2 clay, 2 stone}
- ◇ Stone Oven {1 clay, 3 stone}
- ◇ Well {1 wood, 3 stone}



Jim Reader	Food	Fields	Pasture	Grain	Veg	Sheep	Boar	Cattle
	2	-	-	-/-	-/-	-	-	-
	Clay	Reeds	Stone	Wood	House	Family	VPs	
	2	-	-	7	Wood/2	2	-14	
	Occupations	Wood Carver						
	Improvements	None						

Allan Stagg	Food	Fields	Pasture	Grain	Veg	Sheep	Boar	Cattle
	4	-	-	-/-	-/-	-	-	-
	Clay	Reeds	Stone	Wood	House	Family	VPs	
	-	-	-	3	Wood/2	2	-13	
	Occupations	Fence Overseer						
	Improvements	Greenhouse {1}						

Kevin Lee	Food	Fields	Pasture	Grain	Veg	Sheep	Boar	Cattle
	2	1	-	-/-	-/-	-	-	-
	Clay	Reeds	Stone	Wood	House	Family	VPs	
	-	3	1	1	Wood/2	2	-13	
	Occupations	Patron						
	Improvements	None						

Pete Campbell	Food	Fields	Pasture	Grain	Veg	Sheep	Boar	Cattle
	3	1	-	-/-	-/-	-	-	-
	Clay	Reeds	Stone	Wood	House	Family	VPs	
	-	1	-	-	Wood/2	2	-13	
	Occupations	Master Forester						
	Improvements	Millstone						

Orders required

Actions for the family, starting with Allan

Harvest - after round 4





BUS BOSS 312-MOR

The silent sands.

GAME OVER

1st	Pete Campbell	LATE	493
2nd	Bob Coull	BAMANA	310
3rd	Michael Graystone	GRUBBY	291
4th	Simon Brooks	BROOKS	212
5th	Jim Reader	BUM	209

No comments came in on this game, so I'll just observe that while LATE's coastal routes turned out to be a good investment, BUM's tendency to stay near the coast did not have the same effect, so that proves nothing. GRUBBY's deep desert routes didn't bring stunning returns, but he didn't finish last, so they could be good with the right runs. The second game will finish soon, so perhaps we'll see some similarities in the winning networks. ☐



BUS BOSS 322-IZU

Pete and Jim complete the southern loop.

ROUND 4

Izu Peninsula
Railways Izu Peninsula (RIP) (Bob Coull, Black)
Ashinoko - Odawara, Atagawa - Kawazu 60 - 12 48

Graystone Runs Ugly Brown Buses Yet Again (GRUBBY) (Michael Graystone, Brown)
Mishima - Ashinoko, Nagaoka - Numazu 64 - 12 52

Japanese Auto Motors (JAM) (Pete Campbell, Blue)
Kawazu - Rendaiji, Shuzenji - Shunzenji Onsen, Shuzenji - Nagaoka . 68 - 12 56

Original New Setting for Enjoying Noodles (ONSEN) (Jim Reader, Yellow)
Shunzenji Onsen - Shuzenji - Ito, Shimoda - Rendaiji 65 - 12 53

Onsen Delights Excursions (ODE) (John Marsden, Orange)
Yugashima - Joren Falls - Dogashima 64 - 12 52

Routes
Buy in the order Michael, Pete, Jim, John, Bob



BUS BOSS 318-LUZ

Six of the first set of runs can be considered.

ROUND 6

Luzon
Filipino Island Bus (FIB) (Bob Coull, Black)
Lingayen - Baguio, San Fernando - Balanga 41 - 12 29

Spanish Heart On Eastern Shores (SHOES) (Lyndon Gurr, Green)
Baguio - San Fernando, Laoag - Santa Praxedes 43 - 11 32

Jim's Energetic Enterprise Produces Now and Every Year (JEEPNEY) (Jim Reader, Yellow)
Rizal - Laoag 41 - 10 31

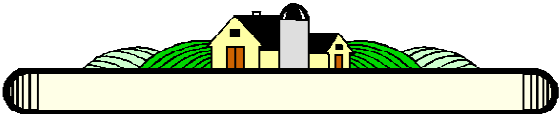
Cabarroquis, Olongapo, Lingayen and Ilagan Network (COLIN) (Colin Sharpe, Red)
Tarlac - Bolinao 40 - 11 29

Luzon Island Coach Keepers (LUCK) (Roger Trethewey, Blue)
Lucena - Batangas - Calatagan 39 - 12 27

LUCK's route from Lucena to Batangas is the shorter southern route.

Round 7 Runs		
1.	4♣ - 10♦	Baclaran to Bayombong
2.	J♦ - 8♠	Cabarroquis to Laoag (not yet available)
3.	4♥ - 9♦	Daet to San Fernando
4.	9♥ - 5♦	Batangas to Lingayen
5.	A♠ - J♣	Palanan to Mariveles (not yet available)
6.	K♠ - 6♦	General Nakar to Baler
7.	7♥ - K♦	Lucena to Bontoc
8.	10♥ - 8♦	Calatagan to La Trinidad
9.	5♠ - 10♣	Vigan to Balanga (not yet available)

Runs	Routes
Enter up to 5	Buy in the order Roger, Colin, Bob, Jim, Lyndon





CANAL MANIA 2

14 goods cubes are distributed in this round.

ROUND 1

Actions

- Geoff Hardingham 1 Took a contract - Worcester and Gloucester (3)
2 Took Stretch/Blue (Nottingham and Tonbridge), Stretch and Stretch
3 Drew a card from the top of the deck
- Kevin Lee 1 Took a contract - Manchester and Liverpool (3)
2 Took Stretch/Black (Manchester and Bristol), Stretch/Red (London and Liverpool), Stretch/Black (Oxford and Guildford)
3 Took Surveyor from the table using the (B) engineer
- Jim Reader 1 Took a contract - #Oxford and Gloucester (5)
2 Took Stretch/Green (Gloucester and Peterborough), Surveyor, Aqueduct
3 Drew a card from the top of the deck
- John Marsden 1 Took two contracts - Coventry and Burton (4), Worcester and Birmingham (4)
2 Took Aqueduct, Stretch/Red (Burton and Worcester), Stretch/Yellow (Leeds and Coventry)
3 Drew a card from the top of the deck

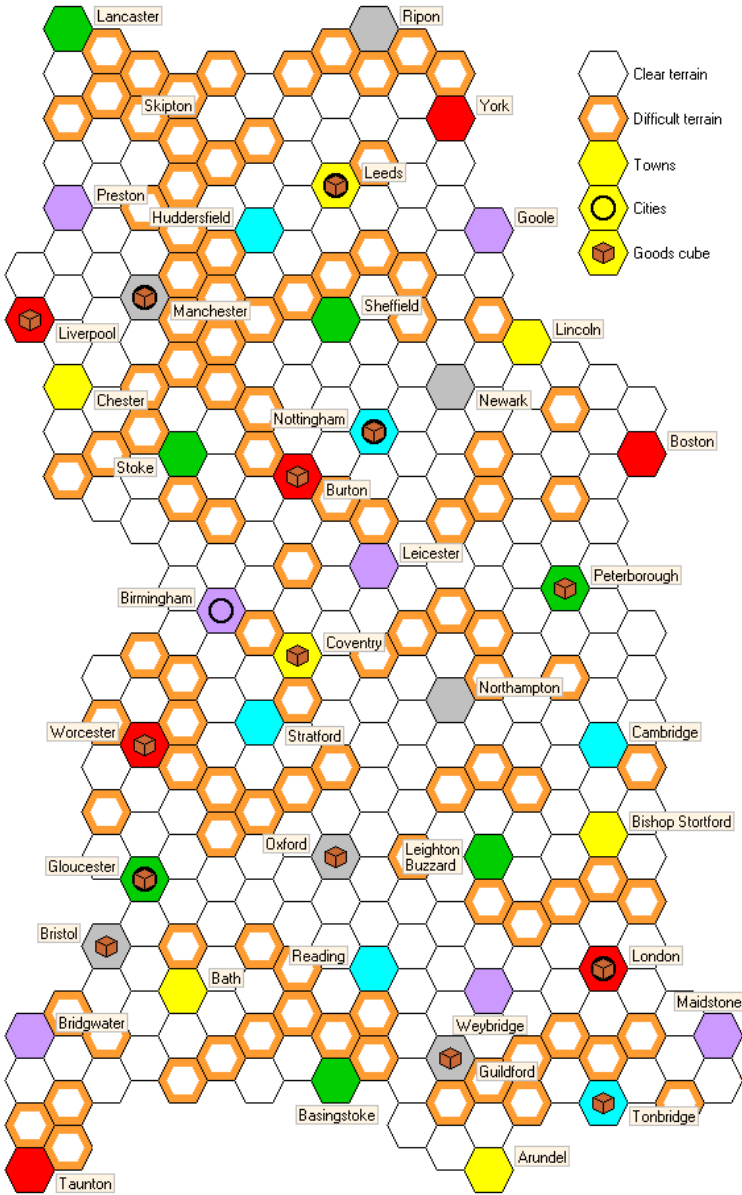
Player	Engineer	S	L	A	T	VPs	Contracts	Canal Basin: 6 goods cubes
Geoff Hardingham (L-S)		16	12	4	3	-	Worcester and Gloucester (3)	
Kevin Lee	(B)	16	12	4	3	-	Manchester and Liverpool (3)	
Jim Reader	(T)	16	12	4	3	-	Oxford and Gloucester (5)	
John Marsden	(S)	16	12	4	3	-	Coventry and Burton (4) Worcester and Birmingham (4)	

The Current Contracts	The Future Contracts
Stoke and Manchester (4)	Birmingham and Chester (6)
Weybridge and Arundel via Guildford (4)	Oxford and Coventry (5)
Cambridge and Peterborough (4)	Manchester and Goole via Leeds (7)
Birmingham and Northampton (5)	Oxford and London via Reading (7)
Birmingham and Chester (6)	Northampton and London via L Buzzard (7)

The following Build Cards are on the table

Surveyor	Stretch	Stretch/White	Tunnel	Stretch
----------	---------	---------------	--------	---------

Geoff, you asked for goods in a green location having taken the Stretch/Blue card - that's why your goods went elsewhere. In the third phase, you can draw a card from the top of the deck, but not take one that has been turned up - unless you are using John Rennie's engineer skill. This skill lets you take one from the table instead of the deck - but it does not allow you to take four from top of the deck!



Playing sequence
John, Jim, Kevin, Geoff



OUTPOST 27

Willem and Jim were just short of the cost of a Moon Base.

ROUND 17

Commander Actions

Lyndon Auctioned a Moon Base for 200. Marcus joined at 211, David at 212. Lyndon and Marcus dropped out at 212. David got it for 212 (w:30 t:10 r:13,13,13 n:22,26 ro:35 mo:50)

- ▶ Auctioned a Moon Base for 200. Marcus joined at 211 and dropped out at 212. Lyndon got it for 212 (o:2,3,4,4 w:30,30,30 m:19 mo:45,45)
- ▶ Bought three Population Units (m:17)
- ▶ Bought two Ore Factories (t:9,11)

Marcus Auctioned a Planetary Cruiser for 160. Willem joined at 161, Jim at 162. Willem and Jim dropped out at 199. Marcus got it for 199 (o:3 w:30 r:12 m:19 n:18,20,24 ro:35,40)

- ▶ Bought one Population Unit (t:7)

David Passed

Willem Auctioned a Space Station for 120. Jim joined at 121 and dropped out at 198. Willem got it for 198 (o:2 w:7,30,30 r:9,10,11,12,12,13,15,15,16,17)

Jim Auctioned a Space Station for 120 and got it (o:1 w:5,6,6,7,8,9,10 t:8,8,9,10,10,11,12)

Mark Auctioned a Heavy Equipment for 30 and got it (r:14 n:16)

- ▶ Bought one New Chemicals Factory (r:11,12,14,14,14)

PO	Name	Factories	Population	Robots	Production
1	Lyndon	4o,12w,2t	18 (20)	2 (18)	5o,3W,2t,2m,2mo (259,25)
2	David	2o,4w,1t,2r,2n	6 (8)	5 (6)	3w,1t,3r,2n,1ro,2mo (250,15)
3	Marcus	2o,4w,1t,3n	13 (16)	0 (0)	3o,1W,1t,1r,1m,3n,3ro (259,20)
4	Willem	2o,9w,4r	8 (9)	5 (8)	2W,5r,1om (155,10)
5	Jim	2o,4w,4t,1r	8 (14)	1 (8)	4w,1t,1T,3r,3m,1om (202,20)
6	Mark	2o,6w,2t,3r,3n	5 (5)	0 (0)	3r,4n (119,10)

PO	Name	Colony Cards	Victory Points
1	Lyndon	WH, Nod, OL, OL, Rob, Eco, OP, OP, MB, MB	87 (830)
2	David	WH, HE, Sci, Rob, Lab, PC, MB, MB	82 (785)
3	Marcus	WH, Nod, Sci, OL, Eco, OP, PC, PC, PC	80 (750)
4	Willem	DL, Nod, Sci, Rob, Lab, Eco, Eco, SS	49 (390)
5	Jim	WH, HE, Nod, OL, Rob, Lab, OP, SS	43 (480)
6	Mark	DL, DL, DL, HE, HE, Sci, Lab	25 (225)

The game ended with all colony cards sold out, which doesn't happen that often. Lyndon and David got two Moon Bases each, while Marcus had to be content with three Planetary Cruisers. He wasn't far behind with those, but the game goes to Lyndon.

Game 17 will round up next time, so let me have your thoughts, if you have any.



PUERTO RICO 10

The quayside is getting very crowded.

ROUND 15

Allan is the Mayor.

Geoff is the Builder (+1) and builds a Coffee Roaster.

Jim builds a Wharf, Allan builds a Coffee Roaster.

Kevin is the Trader and trades Tobacco.

Jim trades Coffee, Allan trades Sugar, Geoff trades Indigo.

The Trading House is emptied.

Jim is the Craftsman and produces an extra Coffee.

Roles

Builder	+1 Captain	Craftsman	Mayor
+3 Settler	Trader	+2 Prospector	

Quarries

X

Plantations (Fields)

Ind	Ind	Sug	Sug	Sug
-----	-----	-----	-----	-----

Trading House

-	-	-	-
---	---	---	---

Ship Supply

7	6
---	---

Cargo Ships

5: Coffee				
✓	✓	-	-	-

6: Tobacco					
✓	✓	✓	✓	✓	-

7: Corn						
✓	✓	✓	✓	-	-	-

Kevin
Lee
DbIns: 6
Chips: 10

Small indigo plant	Small sugar mill	Tobacco storage	Small market
Small warehouse	Harbour	Customs house	

Fields: Qry✓ Crn✓✓ Ind✓X Sug✓X Tob✓✓✓ Goods: Crn✓ Ind✓✓✓ Sug✓✓✓ Tob✓

Jim
Reader
DbIns: 11
Chips: 9

Small indigo plant	Small sugar mill	Tobacco storage	Coffee roaster
Office	Large market	Factory	Wharf
Residence			

Fields: Qry✓ Crn✓✓ Ind✓XX Sug✓Tob✓ Cof✓✓ Goods: Crn✓✓ Ind✓✓ Sug✓✓ Tob✓ Cof✓✓✓

Allan
Stagg
DbIns: 2
Chips: 19

Small indigo plant	Small sugar mill	Coffee roaster	Small warehouse
Hospice	Fortress		

Fields: Qry✓✓✓ Crn✓✓ Ind✓ Sug✓Tob✓ Cof✓✓ Goods: Crn✓ Ind✓✓ Sug✓

Geoff
Hardingham
DbIns: 9
Chips: 10

Small indigo plant	Sugar mill	Tobacco storage	Coffee roaster
Small market	Factory	Guild hall	City hall

Fields: Qry✓✓✓ Crn✓✓ Ind✓ Sug✓ Tob✓X CofX Goods: Crn✓✓ Ind✓✓ Sug✓ Tob✓

Orders required

Round sixteen orders in the sequence Geoff, Kevin, Jim, Allan



PUERTO RICO 11

The Captain visits and leaves everyone with one barrel of Corn.

ROUND 9

Willem is the Mayor (+1).
Jim is the Trader (+1) and trades Indigo.
The Trading House is emptied.
Kevin is the Captain (+1).
Tony is the Prospector.

Roles

+1 Builder

Captain

+1 Craftsman

Mayor

+1 Settler

Trader

Prospector

Quarries

4

Plantations (Fields)

Crn

Ind

Ind

Tob

Cof

Trading House

-

-

-

-

Ship

7

Supply

37

Buildings												
1 VP	SIP	1	SSM	1	SMA	×	HAC	×	CON	2	SWA	2
2 VPs	LIP	2	LSM	3	HOS	1	OFF	2	LMA	2	LWA	2
3 VPs	TOB	2	COF	1	FAC	2	UNI	2	HAR	2	WHA	2
4 VPs	GUI	×	RES	1	FOR	1	CUS	1	CIT	1		

Cargo Ships

5: Sugar

✓✓✓✓-

6: Indigo

✓✓✓--

7: Coffee

✓✓✓✓--

Willem Moene
DbIns: 4
Chips: 7

Small indigo plant

Small sugar mill

Coffee roaster

Small market

Fields: Qry✓ Crn✓ Ind× Sug✓ Cof✓×

Goods: Crn✓

Jim Reader
DbIns: 6
Chips: 7

Small indigo plant

Small sugar mill

Tobacco storage

Hospice

Fields: Crn✓ Ind✓✓ Sug✓ Tob✓ Cof✓

Goods: Crn✓

Kevin Lee
DbIns: 2
Chips: 6

Small indigo plant

Coffee roaster

Hacienda

Guild hall

Fields: Qry✓ Crn× Ind× Sug××× Tob× Cof✓✓

Goods: Crn✓

Tony Sait
DbIns: 1
Chips: 8

Small sugar mill

Indigo plant

Small market

Hacienda

Fields: Qry✓✓ Crn✓✓ Ind✓ Sug×× Tob××

Goods: Crn✓

Orders required

Round ten orders in the sequence Jim, Kevin, Tony, Willem



PUERTO RICO 12

It's carnival time.

NEW GAME

Welcome to another game of Puerto Rico. Your playing order is:

Kevin Lee 149 Ludlow Road, Woolston, Southampton, SO19 2ER
Stephen Webb 17 Gladwyn Close, Parkwood, Gillingham, Kent, ME8 9TQ
Willem Moene Dijkhuizen 4, 1112 SB Diemen, The Netherlands
Jim Reader 4835 Lexington Court, Center Valley, PA18034, USA

Roles

Builder

Captain

Craftsman

Mayor

Settler

Trader

Prospector

Quarries

8

Plantations (Fields)

Ind

Ind

Sug

Sug

Tob

Trading House

-

-

-

-

Ship

4

Supply

75

Buildings												
1 VP	SIP	4	SSM	4	SMA	2	HAC	2	CON	2	SWA	2
2 VPs	LIP	3	LSM	3	HOS	2	OFF	2	LMA	2	LWA	2
3 VPs	TOB	3	COF	3	FAC	2	UNI	2	HAR	2	WHA	2
4 VPs	GUI	1	RES	1	FOR	1	CUS	1	CIT	1		

Cargo Ships

5: Empty

- - - - -

6: Empty

- - - - -

7: Empty

- - - - -

I've reduced the building names to three letter abbreviations to save space. SIP for Small Indigo Plant, LIP for Large Indigo Plant, etc. The game just calls the latter the Indigo Plant, but the addition of 'Large' removes any possible confusion.

The Buildings table shows how many of each building are left. You'll need to refer to your copies of the game for details of cost and number of colonist spaces, as trying to show all of that would take too much room.

Kevin and Stephen start with one Indigo field each, while Willem and Jim have Corn fields. I shall be using field instead of plantation as it is easy to confuse plantation and plant.

We're ready to make a start with round one. For a four-player game you start with three doubloons each, so choose your roles and let me know what you'll do when the other players choose theirs. You'll find a summary sheet enclosed that clarifies what I'll be doing if your orders don't cover the situation you find yourselves in. Note that the default actions will not be used to replace orders that are provided but cannot be carried out.

Orders required

Round one orders in the sequence Kevin, Stephen, Willem, Jim





RAILWAY RIVALS 2112-I(N)

The north was good.

GAME OVER

1st	Jim Reader	PADDY	319
2nd	Simon Brooks	BROOKS	317
3rd	Tony Sait	GITCO	300
4th	Kevin Lee	BEAR	271
5th	John Marsden	MARS	226

Jim Reader (PADDY, 1st): Wow, that was very close. As Keith mentioned, I thought Simon had this wrapped up with the solo run in race 41 and I had to think hard whether to enter this for second place and deny him 30 points or try and maximize my own points elsewhere. I was very pleased with my line in this game as I could regularly enter more than four of the races, allowing me to try and choose the best. Thanks very much for an exciting game and commiserations to Simon for coming so close.

Tony Sait (GITCO, 3rd): Damn, not as close as I had hoped. Good battle and an interesting map.

John Marsden (MARS, 5th): Well, this went wrong from the start when I failed to notice the river south of Sligo and thus ended up building in parallel. Coupled with an expensive and unprofitable extension towards Dublin and I deserved to lose.

Congratulations to Jim and Simon, and thanks for running the game.

PADDY's winning network was a three-pronged affair built around Enniskillen. While he was able to enter more runs than usual, he was lucky not to find his routes being undercut by shorter routes from the opposition.



RAILWAY RIVALS 2124-I(S)

CORK has a corker of a round.

ROUND 6

Ireland (South) {17 points for these builds}
Southern Irish Network (SIN) (Pete Campbell, Blue)
R25 - R26 - Bandon - O28 - N27 - K29 - Bantry, P11 - P8 - Q8 - Q5.
60 +6 (towns) +1/-1 (WEAR) -1 (PADDY) = 65

Comfy Ride Across Irish Countryside (CRAIC) (Steve Ham, Purple)
I51 - Tullow - L55 - Enniscorthy, J23 - Kenmare, Fermoy - W21 - Lismore, Enniscorthy - M57.
44 +3 (towns) +2 (WEAR) +1/-7 (CORK) = 43

Wexford Expressways Are Rampant (WEAR) (Kevin Lee, Black)
Tralee - H21 - Killarney, L43 - N42 - Dublin - P44, Y16 - Y17 - Z17 - Z18, A44 - Tullamore, K44 - K46, T14 - T16.
40 +1/-1 (SIN) -2 (CRAIC) -2 (PADDY) +2/-9 (CORK) = 29

Powerful Automated Delivery and Distribution in Yellow (PADDY) (Jim Reader, Yellow)
Q46 - Q47 - R47 - Wicklow - P49 - P51 - Arklow - Q53 - O54, L18 - Listowel, J19 - I20 - Tralee.
28 +6 (towns) +1 (SIN) +2 (WEAR) +1 (CORK) = 38

Colin's Operational Railway Korporation (CORK) (Colin Sharpe, Red)
M57 - Enniscorthy - M55 - L54 - Tullow, Tullamore - B44 - Banagher, B44 - A44, Lismore - X22 - Fermoy - U22 - T21, K43 - K44.
61 +9 (towns) +7/-1 (CRAIC) +9/-2 (WEAR) -1 (PADDY) = 82

WEAR's build order was for 18 points, so the last hex did not get built.

Round 7 Runs		
1.	32 - 53	Enniscorthy/Rosslare to Cobh
2.	55 - 13	Mallow/Newcastle to Dublin
3.	21 - 41	Johnstown/Kildare to Tipperary
4.	34 - 03	Waterford to Great Britain
5.	11 - 61	Dublin to Ennis/Foynes
6.	24 - 64	Portlaoise to Killarney/Tralee
7.	46 - 05	Galway to Any Coastal Town

Runs	Builds
Enter up to 4	Up to 10 points excluding payments to rivals



RAILWAY RIVALS 2127-MP

MARS pays to get into Kuala Lumpur.

ROUND 4

Malaysian Peninsula {14 points for these builds}
Thailand Singapore Express (TSE) (Tony Bromley, Red)
K58 - Q61 - Q63 - S64, M59 - Seremban.
33 +2 (ROMP) +2/-4 (MARS) = 33

Railways on Malaysian Peninsula (ROMP) (Bob Coull, Black)
Kuala Lumpur - L56 - L57, B56 - Z17 - Kuala Lipis, F56 - K59, W10 - Ipoh, B56 - B57.
49 +3 (towns) -2 (TSE) +2 (MARS) +2 (BAKUTEH) +1/-3 (BUGGER) = 52

Malaysia's Amazing Railway System (MARS) (John Marsden, Green)
N63 - N62 - M62 - Seremban - M56 - Putrajaya - K55 - J55 - Kuala Lumpur.
39 +4/-2 (TSE) -2 (ROMP) -9 (BUGGER) - 30

Butterworth, Alor and Kangar Uber-Engines Travel in Extreme Heat (BAKUTEH)
(Jim Reader, Yellow)
Kuala Besat - M23 - M24 - Merang, Gua Musang - W16 - Z17 - Kuala Lipis - B69.
37 +3/-1 (ROMP) +9 (MARS) = 38

Butterworth, Georgetown and Gerik Railway (BUGGER) (Lionel Robbins, Blue)
J55 - Kuala Lumpur, X9 - W10, Kluang - R67 - R70, W9 - W8 - V7 - U8 - Q6.
37 +3/-1 (ROMP) +9 (MARS) = 48

Builds

Up to 16 points excluding payments to rivals



RAILWAY RIVALS 2134-IN

Your ships have come in.

SET UP

Malaysian Peninsula		
Player/Colour	Start	Railroad
Michael Graystone	Vishakhapatnam	Graystone Railways Entertain Another Territory
Brown		(GREAT)
Steve Ham	Calicut	Services for Lowly Unloved Millions Dreaming of
Purple		Greatness (SLUMDOG)
John Marsden	Calcutta	Over Deccan Express
Green		(ODE)
Jim Reader	Madras	Crazy Useless Railway Rivals in Yellow
Yellow		(CURRY)
Colin Sharpe	Bombay	Railway & Industrial Corporation Empire
Blue		(RICE)
Brian Tappenden	Mangalore	To be advised
Orange		

Your ports have been assigned, with the use of some random factors to resolve clashes of interest. Brian, please name your company. The acronym made up from the initial letters of the words in the name is traditionally a word rather than a meaningless string of letters.

Set up

Up to 16 points excluding payments to rivals



SAINT PETERSBURG 2

Two trades and one card into hand.

PHASE 4-T

Round 4 - Trading Phase

Tony	Pete	Kevin	Marcus
Gold Miner ⇒ Gold Smelter	Fur Trapper ⇒ Fur Shop	✕	+ Chambermaid into hand



Players	Rubles	VPs	Worker	Building	Aristocrat	Leads Phase	Cards
Kevin	11	13	21r + 2v	0r + 3v	9r + 3v	Building	7
Marcus	21	10	18r + 1v	0r + 0v	11r + 5v	Worker	5
Tony	9	14	12r + 0v	0r + 6v	6r + 0v	Aristocrat	15
Pete	16	23	18r + 3v	7r + 6v	10r + 4v	Trading	17

Players	Cards in hand	Cards in play
Kevin	Hospital, Controller	Fur Shop, Gold Miner x 3, Shepherd, Ship Builder x 2, Market x 3, Mistress of Ceremonies, Warehouse Manager
Marcus	Weaving Mill, Customs House, Chambermaid	Gold Miner, Lumberjack, Weaving Mill, Wharf, Potjomkin's Village, Admiral, Judge, Warehouse Manager
Tony	Fur Trapper, Customs House	Czar and Carpenter, Fur Trapper, Gold Smelter, Shepherd, Market, Library, Administrator, Secretary
Pete	Author, Judge, Senator	Fur Shop, Fur Trapper, Lumberjack x 2, Wharf, Observatory, Peterhof, Pub, St.Isaac's Cathedral, Controller, Mistress of Ceremonies

Orders required

Round five Worker phase led by Marcus





YEAR OF THE DRAGON 1

Make the most of the peace.
It will not last.

ROUND 2



{Peace} {Peace} Mongol Invasion Dragon Festival Contagion Imperial Tribute



Drought Imperial Tribute Dragon Festival Mongol Invasion Contagion Drought

Actions

Lyndon Build - Adds a floor to Palace 2 and starts Palace 3
Pete Privilege - buys a large Privilege for 6 Yuan
Rob Taxes - gains 5 Yuan
Michael Military Parade - Person Marker moves forward 3

Person Tiles

Lyndon Warrior {elder} - moves in to Palace 3
Michael Tax Collector {younger} - moves in to Palace 1
Pete Warrior {younger} - moves in to Palace 2
Rob Warrior {elder} - moves in to Palace 2

Event

Peace, love.

Decay

No decay

Scoring

Pete 2 for Palaces, 2 for Dragons
Lyndon 3 for Palaces, 2 for Dragons
Michael 3 for Palaces
Rob 2 for Palaces

Rob currently has the lowest score, but he has the second highest potential score courtesy of his swollen bank account.

	Michael	Rob	Pete	Lyndon
Score (now/final)	6 / 15	4 / 17	6 / 14	9 / 19
Person track	15	13	17	16
Yuan (money)	3	16	0	0
Dragons/Fire/Rice	0 / 0 / 0	0 / 0 / 0	2 / 0 / 1	2 / 0 / 0
Palace 1	Healer 1	Warrior 1	Warrior 1	Monk 1
	Tax Collector 3	Craftsman 1	Pyrotechnist 1	-
	-			
Palace 2	Craftsman 1	Tax Collector 3	Craftsman 1	Warrior 1
	-	Warrior 2	Warrior 1	Craftsman 1
				-
Palace 3	Warrior 2			Warrior 2

Action Groups

Research	Firework Display	Taxes	Military Parade
Privilege	Build	Harvest	Get up to 3 Yuan

Person Tile Summary

Key: {tiles available}; person track movement/effect

			Michael	Rob	Pete	Lyndon
Courtesan	Younger {8}: 1/1		✓	✓	✓	✓
Craftsman	Younger {4}: 2/1		✓	-	✓	-
Tax Collector	Younger {6}: 3/3		-	✓	✓	-
Farmer	Younger {5}: 4/1	Older {3}: 1/2	✓	✓	✓	✓
Healer	Younger {4}: 4/1	Older {3}: 1/2	✓	✓	✓	✓
Monk	Younger {4}: 6/1	Older {3}: 2/2	✓	✓	✓	✓
Pyrotechnist	Younger {4}: 5/1	Older {3}: 3/2	✓	✓	-	✓
Scholar	Younger {5}: 4/2	Older {3}: 2/3	✓	✓	✓	✓
Warrior	Younger {1}: 5/1	Older {X}: 3/2	-	-	-	-
Wild cards			✓✓	✓✓	✓✓	✓✓

Rob and Pete have full Palaces. Please consider the possibility that when choosing your new person there is still no room for them, and tell me which existing person to release to make room. Bear in mind that this happens before the Mongol Invasion takes place. You can choose not to house the new person you choose, but you won't move ahead on the person track if you do this. The default will be to turn away the new person.

The rumours from the north of the Mongol Invasion will turn out to be true next time. Michael and Pete currently have the fewest warriors, so please remember to tell me which person to release from your palaces. If you don't say, I shall release the lowest valued Warrior from your service.

Orders required
Actions and person tile selection in the order Pete, Lyndon, Michael, Rob

PREVIEW

While I have said that a new game of Battle! will not be appearing until the new year, we continue to add names to the list. I had a contact out of the blue asking where he could get the rules, and I've responded with an invitation for he and his friends to join the forthcoming game. Whether that will bear fruit remains to be seen.



The next two issues don't see anything particularly unusual in the way of new games.

The 1826 gives me a chance to get another game under my belt before the lessons of the last one have worn off completely. The Phoenicia game will be our second, and it will be interesting to see how it compares with the first, which received mixed reviews. Three players from the first game have come back for more, so it can't have been that bad.

Here's the plan for new games due to start in the next issues.

#169: Bus Boss, Outpost, Saint Petersburg
#170: 1826, Acquire (Standard), Phoenicia



ZINES RECEIVED

A summary of zines that I've received recently.

Date	Zine/Issue
Sep 16th	Variable Pig 120
Sep 19th	...mais n'est-ce pas la gare? 98
Sep 29th	Ode 307
Oct 11th	Minstrel 328

RATINGS

This is the list of subscribers with a rating of 2.0 or more. People are included if they have completed five games.

-	Roger Krueger	4.200
▼	David Smith	3.591
-	Tony Bromley	3.571
-	Pete Campbell	3.556
▲	Lyndon Gurr	3.349
-	Lionel Robbins	3.222
-	Mark Frueh	2.750
▼	Marcus Pratt	2.694
-	Steve Thomas	2.563
-	Geoff Hardingham	2.364
-	Stephen Webb	2.326
-	Michael Graystone	2.241
-	Tony Robbins	2.190
-	Rob Thomasson	2.125
-	Alan Harvey	2.097
-	Colin Sharpe	2.096
-	Richard Lunn	2.000

WHO PLAYS WHAT

Tony Bromley	1837-Y25, RR-2117-ND, RR-2127-MP	Greg Payne	BA19, BB-313-MOR, Robo3
Pete Campbell	1825-H27, 1829-U25, 1837-L27, 1861-C27, 18GA-D26, Agr3, BB-322-IZU, RR-2117-ND, RR-2124-I(S), StP2, YoD1	Marcus Pratt	Agr2, OP27, Robo3, StP2
John Colledge	Acq52, Acq53	Jim Reader	Agr3, BA19, BB-318-LUZ, BB-322-IZU, CM2, OP27, PR10, PR11, PR12, RR-2117-ND, RR-2124-I(S), RR-2127-MP, RR-2134-IN, Robo3
Bob Coull	Acq54, BB-318-LUZ, BB-322-IZU, RR-2117-ND, RR-2127-MP	Lionel Robbins	1825-H27, 1829-U25, 1870-O27, RR-2127-MP
Dennis Frank	BA19	Tony Robbins	1837-Y25
Tim Franklin	1895-X24	Adam Romoth	1837-L27, 1870-Y26
Mark Frueh	1870-R24	Tony Sait	1830-G26, 1830-V1-N24, 1835-C26, 1856-P26, PR11
Michael Graystone	Acq52, Acq53, Acq54, BB-322-IZU, RR-2134-IN	Don Shailer	BB-313-MOR, RR-2117-ND, Robo3
Lyndon Gurr	1835-C26, 1856-P26, 1856-Y27, 1861-C27, 1870-Y26, 18GA-D26, BB-318-LUZ, OP27, YoD1	Colin Sharpe	Acq52, Acq53, BB-318-LUZ, RR-2124-I(S), RR-2134-IN
Steve Ham	BA19, RR-2124-I(S), RR-2134-IN, Robo3	John Shelley	1829-U25, 1835-C26, 1856-Y27, 1870-O27
Geoff Hardingham	1837-Y25, CM2, PR10	David Smith	OP27
Alan Harvey	1825-H27, 1830-V1-N24	Don Smith	1830-V1-N24, 1835-C26, 1837-L27, 1856-Y27, 1870-R24, 1870-Y26, 1870-O27, 18GA-D26, 18GA-Z27
Mike Head	1830-G26, 1856-P26, 18GA-D26, 18GA-Z27	Allan Stagg	Agr2, Agr3, PR10
John Hopkins	1837-Y25	Mark Stretch	1830-V1-N24, 18GA-Z27, OP27
Mike Hutton	1825-H27, 1830-G26, 1856-P26, 186-1C27, 1870-Y26, Agr2	Brian Tappenden	RR-2134-IN
Roger Krueger	1870-R24, 1895-X24, Robo3	Steve Thomas	1837-L27, 1895-X24
Kevin Lee	Acq54, Agr2, Agr3, BB-313-MOR, CM2, PR10, PR11, PR12, RR-2124-I(S), StP2	Rob Thomasson	1829-U25, 1856-Y27, 1870-O27, BB-313-MOR, YoD1
Michael Longdin	YoD1	Roger Trethewey	BA19, BB-318-LUZ
Richard Lunn	1830-G26, 1856-P26, Acq53, BA19	Stephen Webb	1830-V1-N24, 1837-Y25, 1837-L27, 1861-C27, 1870-R24, PR12
John Marsden	Acq52, BB-313-MOR, BB-322-IZU, CM2, RR-2127-MP, RR-2134-IN	Tony Wilcock	Acq52, Acq54, StP2
Willem Moene	1825-H27, 1830-G26, 1835-C26, 1856-Y27, 1861-C27, 1870-R24, 1870-Y26, OP27, PR11, PR12		



OUTSIDE EDGE

FOR WHOM THE DIE ROLLS is brought to you by:
Keith Thomasson, 14 Stepnells, Marsworth, Near Tring, Herts, HP23 4NQ

CONTENTS

◇ Games ◇	1870-Y26	30	RR-2112-I(N)	56
*****	1870-O27	32	RR-2117-ND	Held
◇ New ◇	1895-X24	34	RR-2124-I(S)	56
1856-Y27	18GA-D26	36	RR-2127-MP	57
18GA-Z27	Acquire 52	40	RR-2134-IN	58
Puerto Rico 12	Acquire 53 (Powers)	41	RoboRally 3	Held
*****	Acquire 54	42	Saint Petersburg 2	59
1825-H27	Agricola 2	44	Year of the Dragon 1	60
1829-U25 (South)	Agricola 3	46	*****	
1830-Q26	Breaking Away 19	43	◇ Bits and Bobs ◇	
1830-V1-N24	Bus Boss 312-MOR	48	Board2Pieces	3-5
1835-C26	Bus Boss 313-MOR	Held	Deadlines	Below
1837-Y25	Bus Boss 318-LUZ	49	Preview	62
1837-L27	Bus Boss 322-IZU	48	Ratings	62
1856-P26	Canal Mania 2	50	Waiting Lists	2
1861-C27	Outpost 27	52	Who Plays What	63
1870-R24	Puerto Rico 10	53	Zines Received	62
	Puerto Rico 11	54		

DEADLINES

Wednesday November 18th 2009
18xx Games - Friday November 13th

Future main deadlines: December 16th January 20th February 17th

E-mail orders must be sent as plain text messages. Do not send as e-mail attachments.
Unreadable submissions may be treated as No Move Received.