

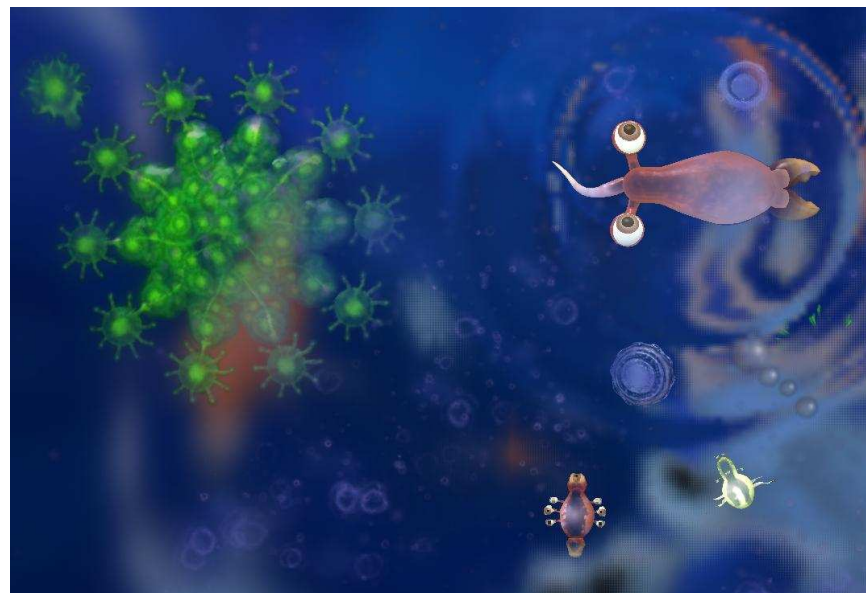
FOR WHOM THE DIE ROLLS

September 2008

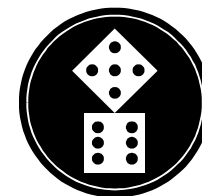
Published by Keith Thomasson

Issue 157

This page has been added to the PDF copy so that reports that appear on facing pages in the paper copy are shown side-by-side.



£2.00



INSIDE STORY

This is FOR WHOM THE DIE ROLLS #157, a game playing magazine for game players, published by Keith Thomasson, 14 Stepnells, Marsworth, Near Tring, Herts, HP23 4NQ. This issue costs £2.00 (including postage).

E-mail: Keith@Thomasson.com

Web site: www.fwtwr.com

Subscription payments can be sent via PayPal to Keith@Thomasson.com

Please specify the currency for international payments as GBP

WAIT

① means that number of players needed. ⇨③ means up to that number needed. ⇨ means there is no limit. ⚙ means a list is full.

Games starting in this issue...

6 nimmt! Bob Coull, Michael Graystone, Steve Ham, Kevin Lee, Gregory Payne, Jim Reader, Colin Sharpe
Acquire (Standard) John Colledge, Michael Graystone, John Marsden, Colin Sharpe, Tony Wilcock
Bus Boss (Morocco) . . . Kevin Lee, John Marsden, Gregory Payne, Don Shailer, Roger Trethewey

Games starting in the next issue...

⚙ 1835 Tony Sait, John Shelley, Don Smith, Willem Moene, Lyndon Gurr

You should own these games or be familiar with their rules...

⇨④ 1825 (multi-unit?) Mike Hutton, Lionel Robbins
⚙ 1830 Mike Hutton, Richard Lunn, Willem Moene, Mike Head, Tony Sait
⚙ 1837 Tony Bromley, Geoff Hardingham, John Hopkins, Tony Robbins, Stephen Webb
⇨③ 1837 Don Smith, Steve Thomas
⇨① 1856 Mike Hutton, Richard Lunn, Lyndon Gurr, Mike Head
⇨④ 1856 Tony Sait
⇨③ 1861 Mike Hutton
⇨① 1870 Mike Hutton, Willem Moene, Lyndon Gurr
⚙ 18GA Mike Head, Don Smith, Lyndon Gurr
② 18GA Pete Campbell
⇨④ 18Rhl Rhineland Willem Moene
⇨① Acquire (Powers) Michael Graystone, Colin Sharpe, John Colledge, Richard Lunn
⇨① Age of Steam Pete Campbell, Mike Hutton, Marcus Pratt
⇨② Agricola Kevin Lee, Mike Hutton
⇨② Canal Mania Kevin Lee, John Marsden, Geoff Hardingham
⇨② In the Year of the Dragon Michael Longdin, Pete Campbell
① Industrial Waste Alan Harvey, Marcus Pratt, Mike Head
⇨② Mystic Wood Jim Reader, Kevin Lee, Roger Trethewey
⇨⑥ Outpost Willem Moene, Jim Reader, Marcus Pratt, John Marsden
⇨③ Phoenicia Mike Hutton, Lyndon Gurr
① Puerto Rico Tony Sait, Willem Moene, Jim Reader
⇨① Railroad Tycoon Michael Longdin, Simon Robertson, Pete Campbell

I supply everything you need for these...

②/⑧ Battle! Michael Graystone, Allan Stagg, Steve Ham, Marcus Pratt
① Breaking Away Gregory Payne, Jim Reader, Dennis Frank, Roger Trethewey, Richard Lunn
⇨④ Bus Boss Colin Sharpe
⇨③ Railway Rivals Colin Sharpe, Pete Campbell

£1 fee for each game, unless otherwise stated, subsidising the cost of the zine

START

Welcome to issue #157, even smaller than last month's smaller than usual issue. Don Shailer is in the process of moving house, and wasn't able to find the time to send his orders this month, so a number of games are on hold. These are Bus Boss 304, 305 and 308, Canal Mania 1, Golden Strider 7, Railway Rivals 2117-ND, RoboRally 3, Sopwith 340 and Space Blast 1.

Gina Teh's absence continues, and in line with some other zines her game slots are open to offers. These are Acquire 41 and Industrial Waste 1. There is also a set of cards in the new 6 nimmt! game with her name on, so if anyone wants those, let me know.

If you're going to be driving to Essen, or indeed, driving in Germany for any reason, you should be aware that a lot of German cities are introducing low emission/environment zones. The zone for Essen comes into force on October 1st of this year.

While the exhibition hall in Essen is not in the low emission zone, some of the main routes leading there are, such as the main north-south route down Alfredstrasse, so you are likely to travel through the zone on your way to the hall. If you drive in these zones without an emissions sticker, you run the risk of an on-the-spot 40 Euro fine.

The good news is that this isn't like the London congestion charge, where you have to pay each time you enter the zone, and the charge is mostly for posting the sticker to you. Once you have a green emissions sticker you can travel anywhere without having to worry about the zones, and the sticker remains valid for the life of the vehicle.

To find out more and order a sticker on-line, visit www.teuv-nord.de/english/48667.asp. My visit there raised a few questions, but I got very prompt answers from the TÜV Nord, the company handling the issuing of the emissions stickers.

- ◇ The price for vehicles not registered in Germany is given on the web site as 12.50 Euros, and on the order form as 12.00 Euros. The correct price is 12.50 Euros.
- ◇ It is not clear from the information given how you actually pay. What they will do is send you the sticker and an invoice, which can be paid by bank transfer or cheque. They clearly don't realise how expensive international bank transfers are from the UK, so I asked them if a cheque drawn on a UK bank was acceptable, and they said it was.
- ◇ The web site urges you not to forget to sign the form. However, if you do sign the form you will be giving them permission to use your personal data for marketing purposes. There is no obvious way to opt out of this on the order form - but it turns out that your signature is not required to get the emissions sticker. This is a typically misleading set up that will encourage a lot of people to sign up to their marketing schemes. Don't sign the form if you don't want them to use your personal data in this way.
- ◇ If you are going to hire a vehicle for a trip in Germany, it is the responsibility of the hire company to get emissions stickers for their vehicles.

I must thank Mayfair Games for letting me know about the low emission zones. It seems crazy that we have to find out about a European scheme from the USA, but I have the feeling that nobody in the UK seems to be aware of this. After all, it's in Europe, not the UK, so most government agencies don't think it is relevant. It's on a par with the need to carry a fluorescent jacket in the car if you drive in France, or face a 100 Euros on-the-spot fine. Did you know about this? We became aware of it through an article in the paper, but not from any publicity.

TRINGCON

This will be the last call in the zine for people to sign up for the next TringCon day, as the day will be done and dusted by the time the next issue is out.

The event takes place on Saturday October 4th, from 9am to 9pm, in the Marsworth Millennium Hall. All sorts of games will be available because the people who comes bring all sorts with them. £10 gets you the day and food and drink to keep you going.

If you make a late decision to come, do let me know so that we can be sure we've got enough food to cater for the hordes.

For those who cannot make it to this event, the future dates are April 4th 2009 (confirmed) and October 3rd 2009 (provisional).

The observant among you will notice that TringCon takes place one day after the 18xx deadline for the next issue. I must admit that the chances of any 18xx games being adjudicated that day are extremely slim, but I would ask everyone to get their orders in on time, or even well in advance. The next issue needs to be produced before Essen, and a late schedule will create all sorts of problems. Early orders could let me get some games done early, which will be very welcome.

This month's cover is from a new computer game - Spore. The first stage of the game is the Cell stage, which is where this picture comes from. The green blob is food, but not for me, as I'm a carnivore in this incarnation. That's me at the top right, and below is what looks like food for me. My mouth, by the way, is on the right-hand side, and my eyes are at the back. Oh well, I can always reorganise myself for the next generation. The other stages of the game are Creature, Tribe, Civilization and Space, so the evolutionary timescale is fairly lengthy.

I came across this almost by accident, first seeing it on a magazine cover, then being offered it when I went to Amazon for something else. Curiosity got the better of me and I took a closer look. I've not got far into the game yet, but I've not been put off yet.

There's one feature of the game I may not take advantage of. For some people, it's also the major feature.

As you create cells and creatures, you can share your creations on-line. If you are logged in to your on-line account when you play the game, other people's creations can turn up in your game. While this could provide more variety in the game, it's not really my style, so I haven't created an on-line account. Perhaps I will later on, but I think I'll investigate the game itself without the possibility of gatecrashers joining in.

The game provides you with targets and missions, but you seem to be able to do whatever you want within reason, so I'll push those boundaries and see what's in the box. But that is for another day, today I have to get this slim volume printed and posted, and then deal with the pile of real work that needs to be sorted out. ☘

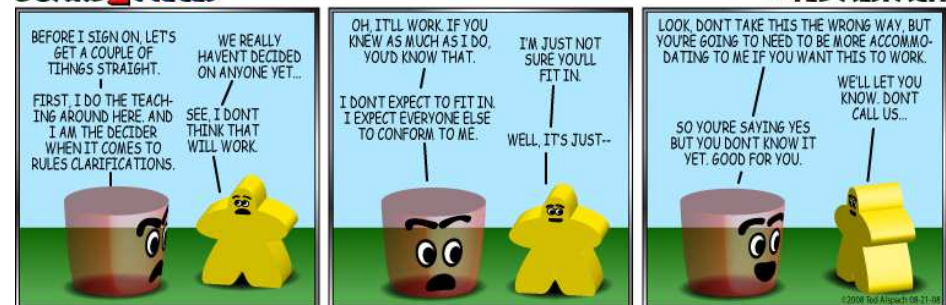
Change of address

Don Shailer 10 Winterton Drive, Aylesbury, Bucks, HP21 9BD

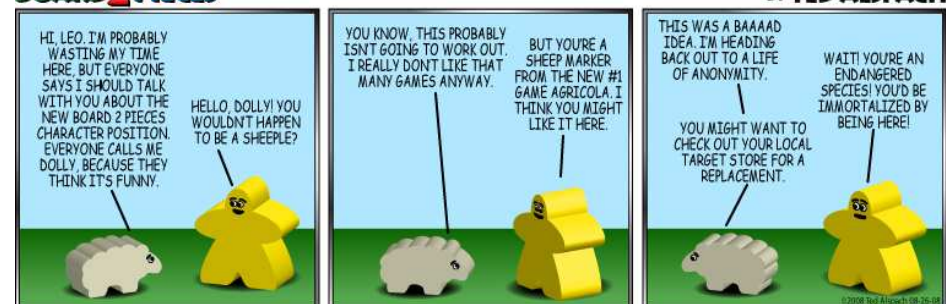
BOARD 2 PIECES



BOARD 2 PIECES



BOARD 2 PIECES



BOARD 2 PIECES



BOARD 2 PIECES



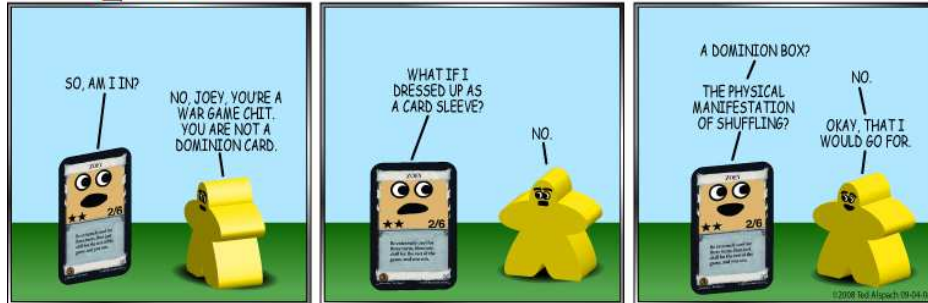
BOARD 2 PIECES

BY TED ALSPACH



BOARD 2 PIECES

BY TED ALSPACH



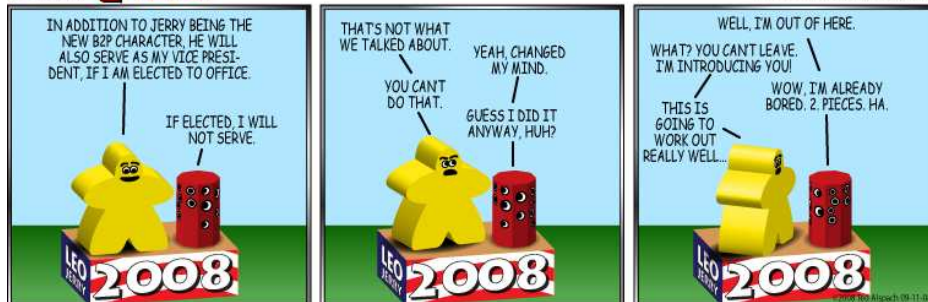
BOARD 2 PIECES

BY TED ALSPACH



BOARD 2 PIECES

BY TED ALSPACH



1861-B23

Another game over and done, another one on the launch pad.

GAME OVER

1st	Lyndon Gurr	6,261	36.0%
2nd	Geoff Hardingham	3,348	19.3%
3rd	Mike Hutton	3,180	18.3%
4th	Mark Stretch	2,580	14.8%
5th	Willem Moene	2,023	11.6%

Mike Hutton (3rd): Another game thrown away. Five-player 1861 is a bit cut-throat when it comes to the public companies, and I can't seem to get the initial bidding or timing of the merges right. We were all jousting for second place from fairly early on. Perhaps Lyndon could write the rest of us a strategy guide so we have some chance next time? Thanks to Keith for running this. I'd certainly be up for another.

I took Mike at his word and opened up a new 1861 list, although I will be thoroughly vetting the spreadsheet before I start the next game. Based on Mike's comments about five-player being a bit cut-throat, perhaps we'll limit the next one to four players.



BUS BOSS 313-MOR

A quick return to Morocco.

NEW GAME

Your dealing order is as follows.

John Marsden	91 Westwood Avenue, Lowestoft, Suffolk, NR33 9RS
Greg Payne	74 Coleford Road, Bristol, BS10 5JL
Rob Thomasson	205 Tolcarne Drive, Pinner, Middlesex, HA5 2DN
Don Shailer	10 Winterton Drive, Aylesbury, Bucks, HP21 9BD
Kevin Lee	149 Ludlow Road, Woolston, Southampton, SO19 2ER

Maps are enclosed for all.

Routes
Buy in the order John, Greg, Rob, Don, Kevin
Don't forget company names and colour preferences

1826-H25

Pete floats the O to make it five operating companies.

OR2 - SR3

OR2	Pres	Lays	Run	Pay	Notes	Price	Credit	Loans	Trains
A	SW	9:J16:2	-	60	Yes	-	100A	254	- 2H
GC	JS	9:M15:1	-	130	Yes	①	82D	156	- 2H 2H
B	LG	57:C15:3	-	190	Yes	①	82D	161	- 2H 2H 2H
PO	PC	5:H6:2	-	70	Yes	②	75E	53	- 2H 2H

Notes: ① 40 to the bank for terrain costs
② 100 to the bank for a '2H' train

Stock Round 3

Lyndon	Stephen	John	Pete
+ B treasury	+ B treasury	+ B treasury	- 1 GC {75E}
			- 1 B {75E}
			+ O/Pres {90}
x	x	x	+ O new {floated}
x	x	x	x
Priority for SR4			

Cash Flow	b/f	OR2	SR3	c/f	Value	%	Certs
Stephen Webb	40	72	-82	30	520	21.9	5
John Shelley	49	108	-82	75	780	32.8	6
Pete Campbell	20	102	-106	16	581	24.5	5
Lyndon Gurr	32	95	-82	45	495	20.8	5

Portfolio	Privates	A	B	E	GC	M	N	O	P	PL	PO
Stephen Webb	Mail	3P	1	-	1	-	-	-	-	-	-
John Shelley	Bridge, Par	-	1	-	3P	-	-	-	2P	-	-
Pete Campbell	Algerian	-	-	-	-	-	-	3P	-	-	3P
Lyndon Gurr	-	-	6P	-	-	-	-	-	-	-	-

Company type	5	10	-	5	-	-	5	5	-	5
Bank (new)	5	-	10	5	10	10	5	8	10	5
Bank (pool)	-	-	-	-	-	-	-	-	-	-
Treasury shares	2	4	-	-	-	-	2	-	-	2
Price	100A	75E	-	75E	-	-	90C	110A	-	75E
Loans	-	-	-	-	-	-	-	-	-	-
Company credit	254	407	-	156	-	-	270	-	-	53
Tokens	2	2	-	2	-	-	3	-	-	2
Trains	2H	2H	-	2H	-	-	-	-	-	2H
		2H	-	2H	-	-	-	-	-	2H

Bank cash: 10,694 Certificate limit: 13 Trains: 7 x '4H', 6 x '6H'...
Current operating order: A, O, PO, GC, B

Tiles	Tile number/Availability	One Operating Round between Stock Rounds
3/2	4/3	5/1
6/-	7/4	8/14
9/19	57/3	58/6

1826

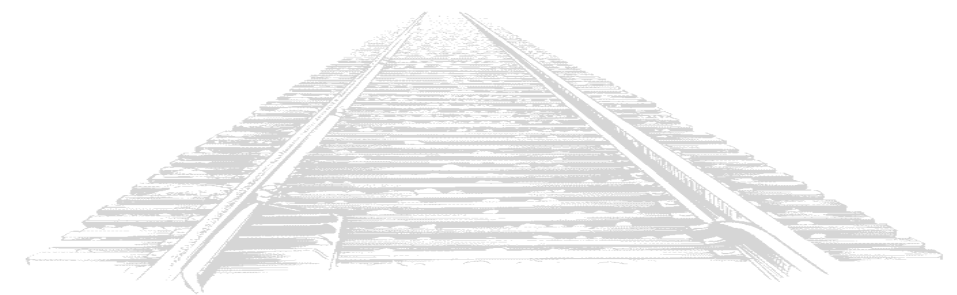
GameH25

Destinations
 A Lyon (L14)
 B None
 E Nancy (F16)
 GC Bordeaux (M3)
 M Marseille (N16)
 N Lille (C11)
 O Rennes (H2)
 P Le Havre (E5)
 PL Lyon (L14)
 PO Poitiers (K5)

Referee:
 Keith Thomasson

Orders required for the following rounds By the early deadline
 OR3, SR4 Adjudication can pause between rounds if requested

© Keith Thomasson 2008





1829-V21

The GSWR drops out of the game.

OR22 - OR23

OR22	Pres	Lay	Token	Run	Pay	Notes	Price	Credit	Trains
LNWR	PB	-	•P8	100	Yes	-	350▲	100	3T
NER	MH	24:Q19:5	•H12	260	Yes	-	275▲	390	5
Mid	JH	-	•S19	230	Yes	-	250▲	70	5 4
NBR	RT	-	•K9	210	No	-	180▼	220	3T 3
Cal	LR	-	•H12 !	340	Yes	-	126▲	40	5 4
L&YR	PB	-	•M9	110	Yes	-	21▲	0	3
GNR	LR	-	•R18 !	250	Yes	-	112▲	20	4 3
GCR	MH	-	•R20	150	Yes	-	64▲	10	4 3
GSWR	JH	-	•J2	-	-	②	0▼	0	-

Notes: ① 120 to the NER for a '3' train
② Company closed and out of the game - '3' train returned to the bank

OR23	Pres	Lay	Token	Run	Pay	Notes	Price	Credit	Trains
LNWR	PB	-	•P8	100	Yes	-	350▲	100	3T
NER	MH	-	•H13	180	Yes	①	300▲	20	5 3T
Mid	JH	-	•H8	230	Yes	-	275▲	70	5 4
NBR	RT	-	•F4	210	No	②	160▼	90	3T 3 3
Cal	LR	7:H12:5	•H14	320	Yes	-	142▲	40	5 4
L&YR	PB	-	•M9	110	Yes	-	29▲	0	3
GNR	LR	-	•T16	250	Yes	-	126▲	20	4 3
GCR	MH	-	•R18	190	Yes	-	67▲	10	4 3

Notes: ① 370 to the bank for a '3T' train
② 40 to the bank for a token in F4
③ 300 to the bank for a '3' train

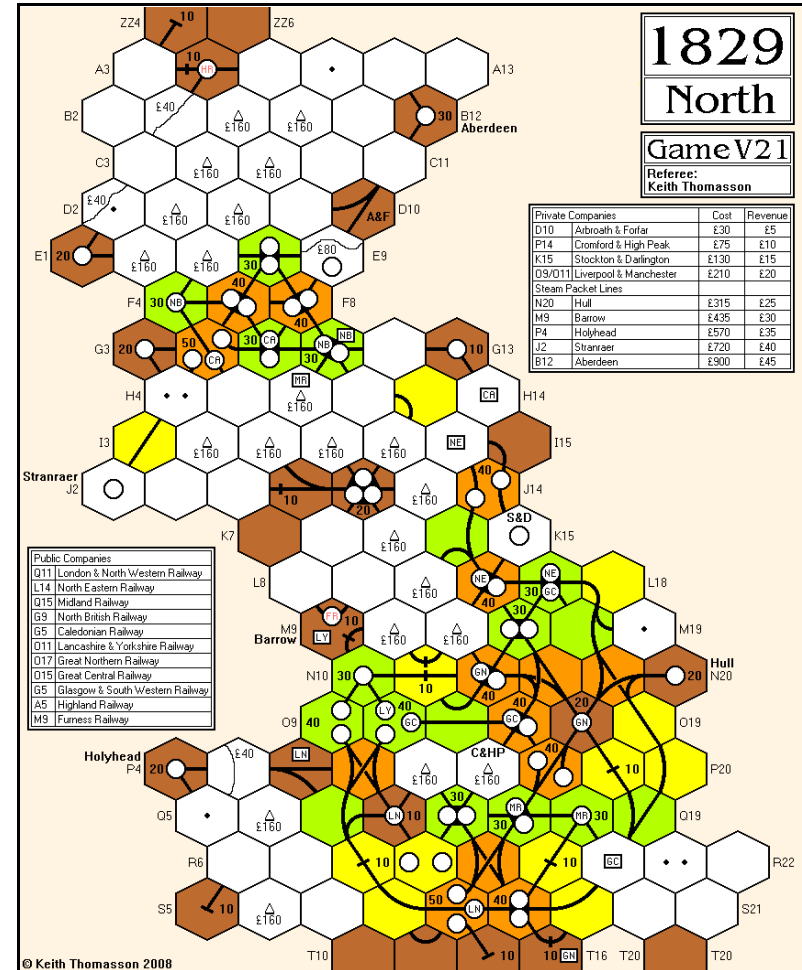
Cash Flow	b/f	OR22	OR23	c/f	Value	%	Certs
Rob Thomasson	551	307	317	1,175	6,263	23.0▼	18/19
Lionel Robbins	2,368	439	457	3,264	6,810	25.0▲	18/20
Peter Berlin	951	184	184	1,319	4,114	15.1▲	8/12
John Hopkins	1,543	230	230	2,003	4,012	14.8▲	9
Mike Hutton	958	220	392	1,570	6,007	22.1▼	17/19

Portfolio	Priv/SP	LNWR	NER	Mid	NBR	Cal	L&YR	GNR	GCR	High	Furn
• Rob Thomasson	Ba St Ab	2	1	-	8D	4	1	1	-	-	-
Lionel Robbins	-	2	1	1	2	6D	2	5D	3	-	-
Peter Berlin	C&HP	5D	-	3	-	-	5D	-	-	-	-
John Hopkins	S&D	-	-	5D	-	-	-	4	-	-	-
Mike Hutton	Hull Hol	1	8D	1	-	-	2	-	7D	-	-

Bank (new)	-	-	-	-	-	-	-	-	10	10
Price (new)	100	90	82	76	71	67	64	61	56	53
Bank (pool)	-	-	-	-	-	-	-	-	-	-
Price (pool)	350	300	275	160	142	29	126	67	-	-
Company credit	100	20	70	90	40	0	20	10	-	-
Tokens	3	3	3	2	2	3	2	1	3	3
Trains	3T	5 3T	5 4	3T	5 4	3	4 3	4 3	-	-

Bank cash: 10,669 Certificate limit: 18 Trains: 2 x '6', 2 x '2+2'...

Tiles	Tile number/Availability							Three Operating Rounds between Stock Rounds						
1/2	2/1	3/2	4/3	5/4	6/4	7/2	8/5	9/8	10/3	12/-	13/3	14/-		
15/-	16/1	17/1	18/-	19/2	20/2	21/1	22/1	23/4	24/3	25/2	26/2	27/2		
28/-	29/-	30/-	31/1	33/1	34/-	35/1	36/-	37/-	38/-	39/1	40/1	41/2		
42/2	43/-	44/1	45/-	46/1	47/-									



Orders required for the following rounds

By the early deadline

OR24, SR15

Adjudication can pause between rounds if requested



1829-U25

No tiles, one new train.

OR1 - SR2

ORI	Pres	Lay	Token	Run	Pay	Notes	Price	Credit	Trains
LNWR	RT	-	►P10	-	-	①	90▼	820	2
GWR	PC	-	►U13	-	-	-	82▼	900	-

Notes: ① 180 to the bank for a '2' train

Stock Round 2

Lionel	Rob	John	Pete
X	X	X	X
Priority for SR3			

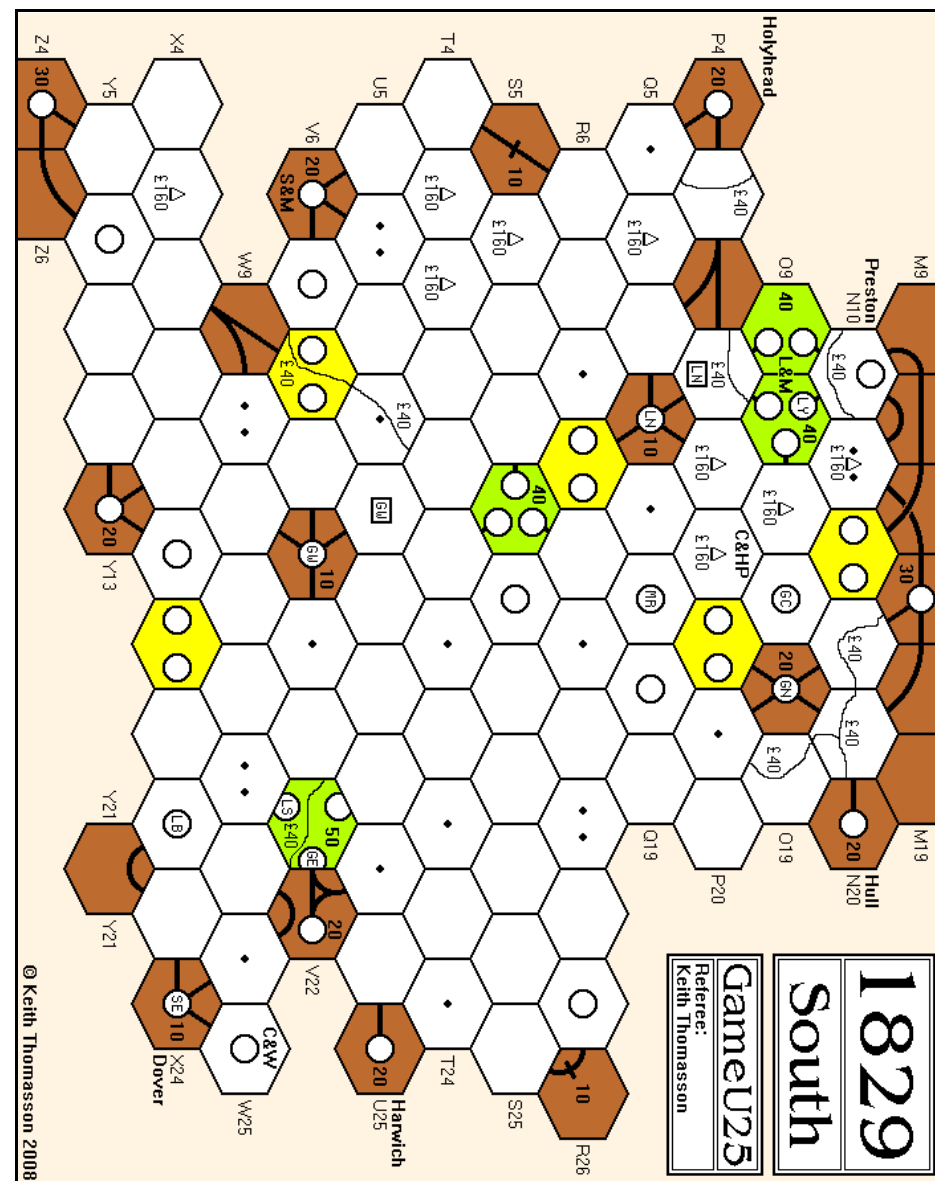
Cash Flow	b/f	OR1	SR2	c/f	Value	%	Certs
Rob Thomasson	20	5	0	25	579	24.0▼	6
John Shelley	255	10	0	265	610	25.3▲	4
Pete Campbell	40	15	0	55	603	25.0▲	5
Lionel Robbins	130	20	0	150	622	25.7▲	4

Portfolio	Priv/SP	LNWR	GWR	Mid	LSWR	GNR	LBSC	GER	GCR
Rob Thomasson	S&M	4D	2	-	-	-	-	-	-
John Shelley	C&HP	3	-	-	-	-	-	-	-
Pete Campbell	C&W	1	4D	-	-	-	-	-	-
★ Lionel Robbins	L&M	2	1	-	-	-	-	-	-

Bank (new)	Hull	-	3	10	10	10	10	10	10
Price (new)		100	90	82	76	71	67	64	53
Bank (pool)	-	-	-	-	-	-	-	-	-
Price (pool)		90	82						
Company credit		820	900						
Tokens		5	5	5	5	5	4	4	4
Trains		2	-						
Bank cash: 19,505	Certificate limit: 18						Trains: 6 x '2', 6 x '3'...		

Tiles	Tile number/Availability					One Operating Round between Stock Rounds			
1/2	2/2	3/2	4/6	5/4	6/4	7/4	8/8	9/10	

I forgot to offer the usual set of four rounds for the start of an 1829, as no tiles can be laid until the survey parties get out to do their job. But there you go, an easy one to get started, now the tiles can be put down.



Orders required for the following rounds	<i>By the early deadline</i>
OR2, SR3	<i>Adjudication can pause between rounds if requested</i>



1830-L23

The '4' trains live on for a little longer.

OR10 - OR11

OR10	Pres	Lay	Run	Pay	Notes	Price	Credit	Trains
NYNH	WM	-	370	Yes	-	180A	19	5 4
B&O	TF	24:I17:6	-	-	①	110D	532	4
B&M	WM	57:F22:3	210	Yes	②	112A	41	6
NYC	MH	-	220	Yes	-	90E	300	5
PRR	JS	43:F18:2	240	Yes	-	82E	2	-
CPR	JS	23:B22:6	-	-	③ ④	70B	283	6 4
C&O	JS	42:F12:5	-	-	⑤	40J	1	5
Erie	TF	23:H8:3	140	No	-	10K	142	4

- Notes: ① 1 to the Erie for a '4' train
 ② 80 to the bank for terrain costs
 ③ 630 to the bank for a '6' train
 ④ 1 to the C&O for a '4' train
 ⑤ 1 to the PRR for a '5' train

OR11	Pres	Lay	Run	Pay	Notes	Price	Credit	Trains
NYNH	WM	-	370	Yes	-	200A	19	5 4
B&M	WM	15:F22:6	240	Yes	-	126A	41	6
B&O	TF	8:H6:1	190	No	-	100D	722	4
NYC	MH	-	220	Yes	-	100E	300	5
PRR	JS	23:E21:5	-	-	①	76E	1	6
CPR	JS	8:C23:5	80	Yes	-	76B	284	4
C&O	JS	8:G3:2	180	Yes	-	50J	73	5
Erie	TF	46:G5:4	140	No	-	10K	282	4

- Notes: ① 1 to the CPR for a '6' train

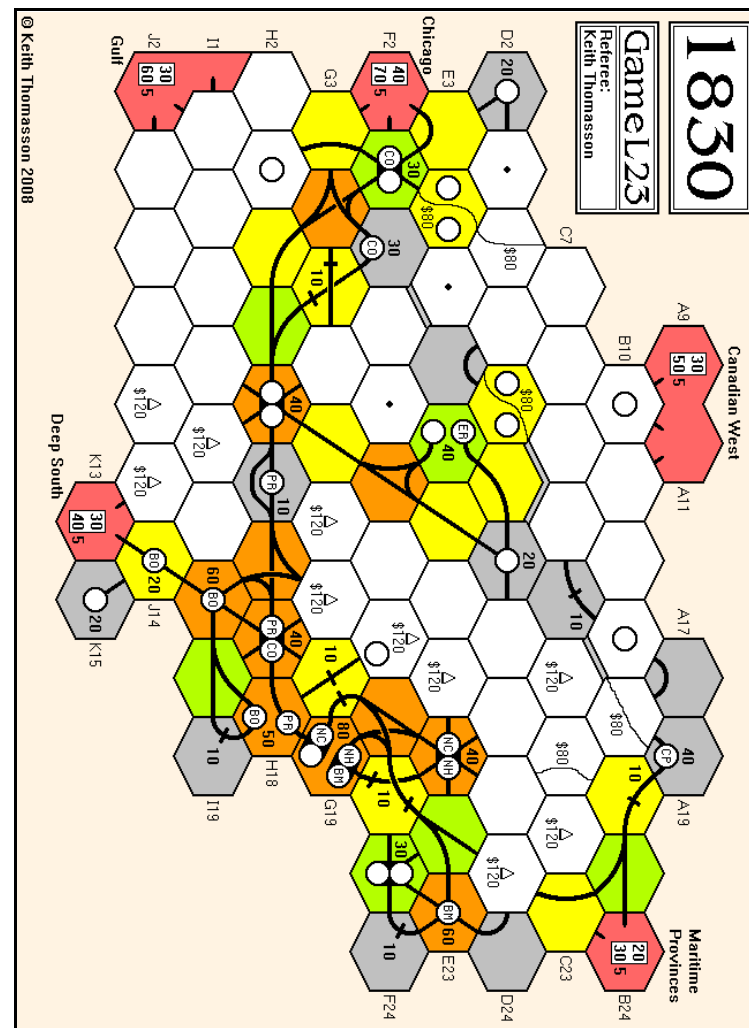
Cash Flow	b/f	OR10	OR11	c/f	Value	%	Certs
John Shelley	25	120	102	245	1,241	12.8	9/12
Mike Head	106	189	221	516	1,594	16.5	8/9
Richard Lunn	596	265	273	1,134	2,598	26.9	11/13
Tim Franklin	135	94	22	251	1,219	12.6	9/12
Willem Moene	74	372	384	830	3,022	31.2	12/14

Portfolio	B&M	B&O	C&O	CPR	Erie	NYC	NYNH	PRR
John Shelley	-	-	3P	6P	1	-	-	5P
Mike Head	2	-	1	1	-	5P	1	-
Richard Lunn	2	-	1	1	1	4	3	1
Tim Franklin	-	6P	-	-	4P	1	-	3
Willem Moene	6P	1	1	-	1	-	6P	1

Bank (new)	-	-	-	2	1	-	-	-
Price (par)	100	100	67	90	71	76	90	71
Bank (pool)	-	3	4	-	2	-	-	-
Price (pool)	126A	100D	50J	76B	10K	100E	200A	76E
Company credit	41	722	73	284	282	300	19	1
Tokens	-	-	-	3	2	2	-	1
Trains	6	4	5	4	4	5	5 4	6

Bank cash: 7,302 Certificate limit: 13 Trains: Diesels
 Current operating order: NYNH, B&M, NYC, B&O, PRR, CPR, C&O, Erie

Tiles	Tile number/Availability							Three Operating Rounds between Stock Rounds						
1/1	2/-	3/2	4/2	7/3	8/4	9/5	55/-	56/-	57/3	58/1	69/1	14/2		
15/1	16/1	18/1	19/1	20/1	23/-	24/2	25/1	26/1	27/1	28/1	29/1	53/2		
54/1	59/1	39/1	40/1	41/2	42/1	43/1	44/1	45/2	46/-	47/1	61/-	62/-		
63/-	64/1	65/-	66/1	67/1	68/1	70/1								



Orders required for the following rounds

By the early deadline

OR12, SR8

Adjudication can pause between rounds if requested



1830-G24

The last two companies are floated.

SR6

Stock Round 6

Willem	Stephen	Pete	Don	Mark
+ CPR/Pres [100]	- 1 C&O {••}	+ PRR new	+ B&O pool	+ NYNH new
	- 2 NYNH {••}			
	- 1 PRR {•82E}			
	+ NYC/Pres [71]			
+ CPR new	+ B&O pool	+ B&O pool	+ B&M pool	+ B&M new
				- 1 B&M {•71E}
+ CPR new	+ NYC new	+ B&M pool	✗	+ C&O pool
+ CPR new	+ NYC new	+ B&M new	✗	✗
+ CPR new	+ NYC new	✗	✗	✗
{floated}				
- 1 CPR {•90B}	+ NYC new	✗	✗	✗
+ C&O pool	{floated}			
	- 1 NYC {•67F}			
+ B&O pool	✗	✗	✗	✗
✗	Priority for SR7			

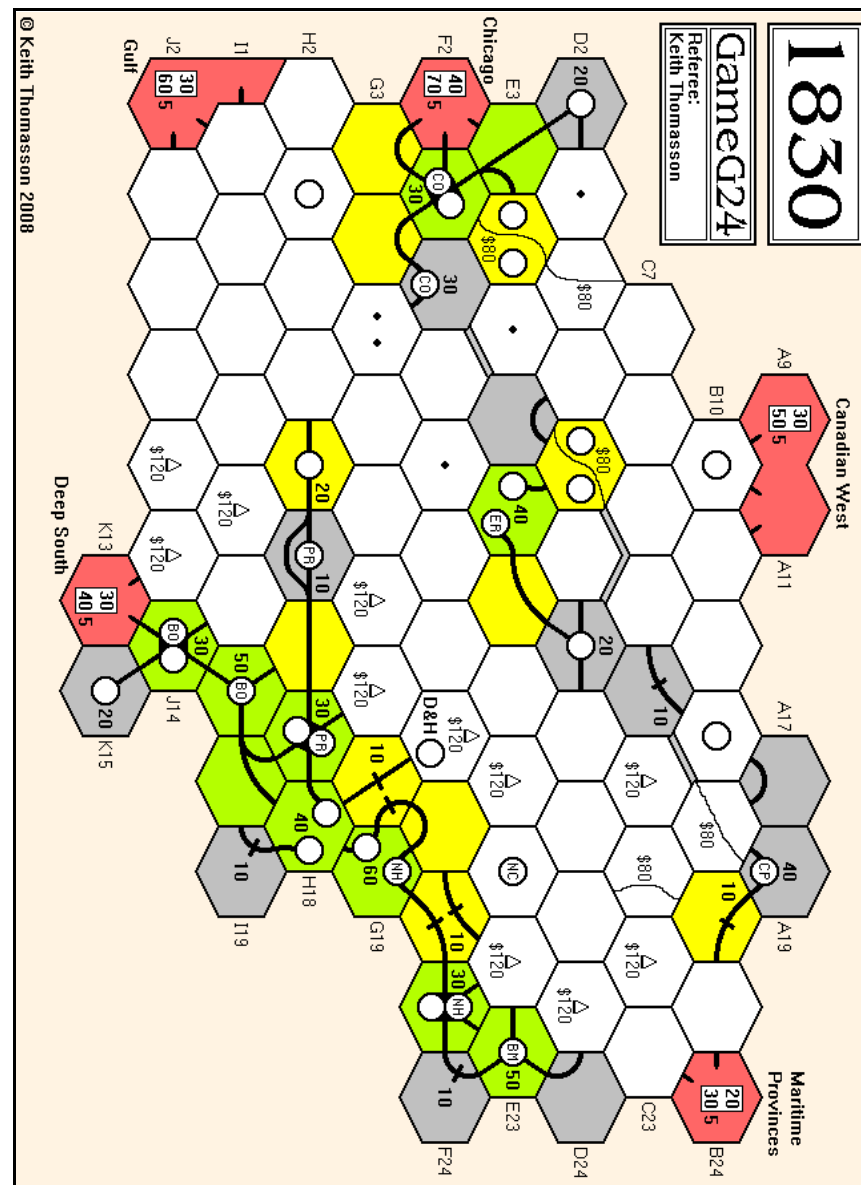
Cash Flow	b/f	SR6	c/f	Value	%	Certs
Mark Frueh	230	-157	73	1,070	22.3•	11
Willem Moene	655	-655	0	1,145	23.9•	11
Stephen Webb	176	-100	76	786	16.4•	8
Pete Campbell	323	-310	13	1,036	21.6•	12
Don Smith	208	-151	57	763	15.9•	8

Portfolio	PCs	B&M	B&O	C&O	CPR	Erie	NYC	NYNH	PRR
Mark Frueh	-	5P	-	1	-	-	-	6P	1
Willem Moene	-	-	1	1	5P	6P	-	-	-
• Stephen Webb	-	-	5P	-	-	-	5P	-	-
Pete Campbell	-	2	1	6P	-	-	-	1	3
Don Smith	D&H	1	1	-	-	-	-	1	5P

Bank (new)	2	2	-	4	4	4	-	-
Price (par)	82	100	76	100	90	71	71	82
Bank (pool)	-	-	2	1	-	1	2	1
Price (pool)	71E	75F	80F	90B	90B	67F	80F	82E
Company credit	30	418	234	1,000	105	710	460	600
Tokens	1	1	1	4	2	4	-	2
Trains	4.3	4	3.3	4	4	3	3	3

Bank cash: 8,224 Certificate limit: 13 Trains: 1 x 4 / 3 x 5
Current operating order: Erie, CPR, PRR, NYNH, C&O, B&O, B&M, NYC

Titles	Tile number/Availability		Two Operating Rounds between Stock Rounds										
1/-	2/-	3/2	4/2	7/1	8/7	9/6	55/1	56/1	57/3	58/1	69/1	14/1	
15/-	16/1	18/1	19/1	20/1	23/3	24/3	25/1	26/-	27/1	28/1	29/-	53/-	
54/-	59/-												



Orders required for the following rounds

By the early deadline

OR8, OR9

Adjudication can pause between rounds if requested



1830-V1-N24

One new company
is floated this time.

SR4

Due to an error on my part, the B&O dividend for OR4 wasn't paid out to Stephen or Tony. Their cash has been adjusted. The NYNH was not charged for upgrading I17.

Stock Round 4

Don	Alan	Stephen	Tony	Mark
+ B&O new	- 1 PRR {▼90B} + Erie/Pres {82}	+ B&O new	+ B&O new	- 1 NYNH {▼•} {Pres to Tony} + PRR new
+ CPR new	+ Erie new	- 4 B&O {▼76E} + CPR new	✗	- 1 CPR {▼71E} + PRR new
✗	+ Erie new	+ CPR pool	✗	✗
✗	+ Erie new	+ CPR new	✗	✗
✗	+ Erie new {floated}	+ CPR new	✗	✗
✗	✗	+ PRR pool	✗	✗
✗	✗	+ NYNH pool	✗	✗
✗	✗	✗	Priority for SR5	

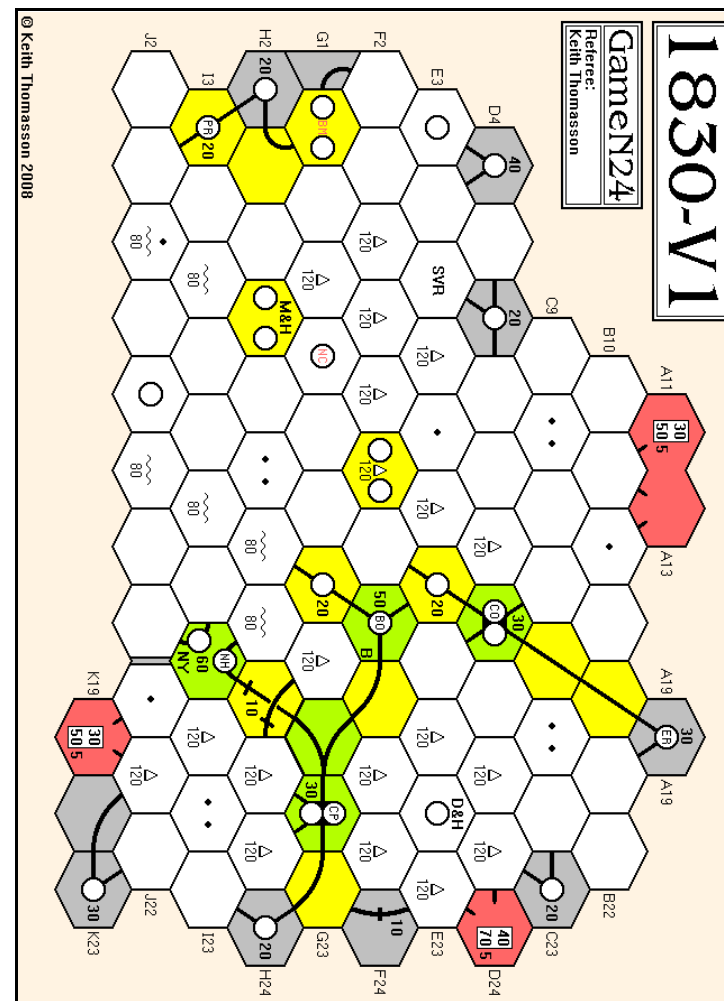
Cash Flow	b/f	SR4	c/f	Value	%	Certs
Stephen Webb	161	-111	50	789	21.0▲	10
Tony Sait	127	-100	27	547	14.6▼	5
Mark Stretch	128	-54	74	704	18.8▲	7
Don Smith	183	-176	7	749	19.9▲	9
Alan Harvey	415	-392	23	965	25.7▲	9

Portfolio	PCs	B&M	B&O	C&O	CPR	Erie	NYC	NYNH	PRR
Stephen Webb	SVR, M&H	-	-	1	4	-	-	2	1
✳ Tony Sait	-	-	5P	-	-	-	-	2P	-
Mark Stretch	-	-	-	-	5P	-	-	1	2
Don Smith	D&H	-	1	6P	1	-	-	1	-
Alan Harvey	-	-	-	-	-	6P	-	-	5P

Bank (new)	10	-	-	-	4	10	-	2
Price (par)		100	67	76	82		71	100
Bank (pool)	-	4	3	-	-	-	4	-
Price (pool)		76E	75F	76D	82C		70G	90B
Company credit		460	381	578	820		304	200
Tokens	2	2	2	4	3	4	1	3
Trains		3	3	3	-		3	4.3

Bank cash: 9,076 Certificate limit: 13 Trains: 5 x '4', 3 x '5'...
Current operating order: PRR, Erie, B&O, C&O, CPR, NYNH

Tiles	Tile number/Availability				Two Operating Rounds between Stock Rounds								
1/1	2/1	3/2	4/2	7/4	8/6	9/5	55/1	56/1	57/1	58/2	69/-	14/2	
15/1	16/1	18/1	19/1	20/1	23/3	24/4	25/-	26/1	27/1	28/1	29/1	53/1	
54/-	59/2												



There were some interesting orders this time, as in interesting to decode, plus some that were either too vague or too specific. When I found the conditional order "Has Tony sold out?" I had to assume that referred to the B&O, but saying so would have been useful. When you say "Is there a Presidency left? If so I'll take it." and there is more than one left, I don't pick one, you get neither. And when you say "If (a particular player) can dump a company on me..." and they can't, even though I know you probably mean "If anyone can dump a company on me...", that isn't what you said.

Orders required for the following rounds

By the early deadline

OR6, OR7

Adjudication can pause between rounds if requested



1850-R22

The stock round will have to wait until next time.

OR17

The MKT run for OR15 was 280, not 240.

OR17	Pres	Lays	Run	Pay	Notes	Price	Credit	Trains
NP	SW	8:C14:4	290	Half	-	375A	228	6
GN	LG	141:B7:3	520	Yes	-	275B	1	6 6
CMSP	LG	-	390	Yes	-	200A	0	10
CBQ	AH	6:H9:1	450	Yes	-	140C	0	12
MP	SW	23:K16:2	220	Yes	-	140B	318	8
SOO	AH	-	430	Yes	-	120B	453	8
UP	TF	58:M12:6	370	Yes	①	90E	191	8
CRIP	SW	14:H9:1	370	Half	-	60G	180	10
MKT	LG	-	280	Yes	-	50G	140	12

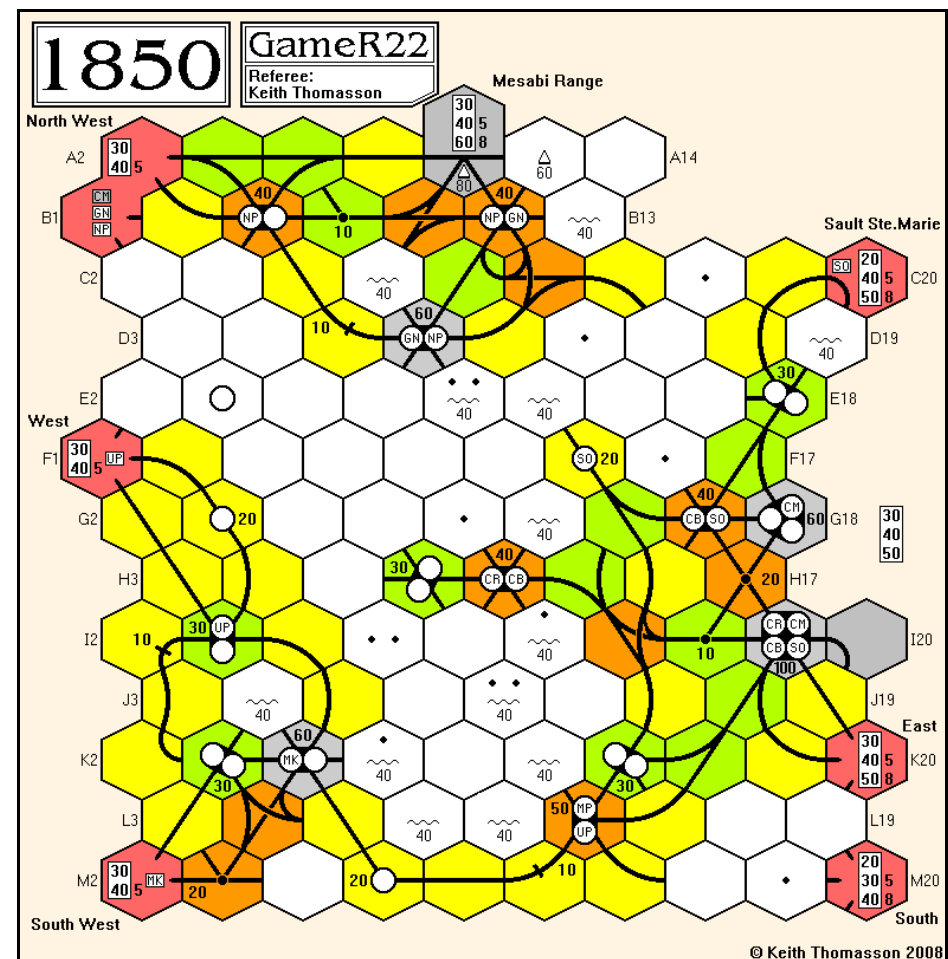
Notes: ① 40 to the bank for terrain costs

Cash Flow	b/f	OR17	c/f	Value	%	Certs
Stephen Webb	1,388	520	1,908	6,163	29.6	18/19
Alan Harvey	840	764	1,604	4,384	21.1	17/18
Lyndon Gurr	2,203	927	3,130	7,310	35.2	16/22
Tim Franklin	1,021	451	1,472	2,937	14.1	10/11

Portfolio	CBQ	CMSP	CRIP	GN	MKT	MP	NP	SOO	UP
Stephen Webb	1	2	5P	1	1	6P	6P	-	-
Alan Harvey	7P	1	3	1	1	-	1	6P	-
Lyndon Gurr	-	6P	2	7P	7P	-	1	1	1
Tim Franklin	1	1	-	1	1	1	-	1	6P

Bank (new)	-	-	-	-	-	3	-	2	-
Price (par)	100	90	76	82	68	100	68	90	82
Bank (pool)	1	-	-	-	-	-	-	-	2
Price (pool)	140C	200A	60G	275B	50G	140B	375A	120B	90E
Company credit	0	0	180	1	140	318	228	453	191
Redeemed shares	-	-	-	-	-	-	2	-	1
Tokens	1	1+E	2	1	2	2	-	1	1
Trains	12	10	10	6.6	12	8	6	8	8
Bank cash: 2,375	Certificate limit: 14				Trains: '12's				
Current operating order: NP, GN, CMSP, CBQ, MP, SOO, UP, CRIP, MKT									

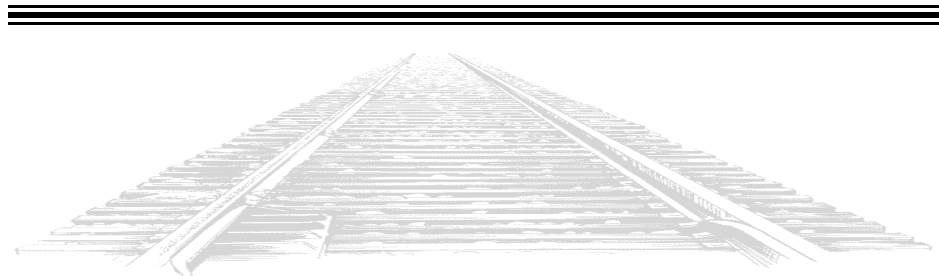
Titles		Tile number/Availability		Three Operating Rounds between Stock Rounds									
1/1	2/1	3/2	4/4	5/2	6/1	7/5	8/7	9/13	55/1	56/-	57/4	58/3	
69/1	128/-	14/3	15/-	16/1	17/1	18/1	19/1	20/1	23/2	24/-	25/-	26/1	
27/-	28/1	29/1	129/1	132/1	141/-	142/-	143/1	144/1	59/1	40/1	41/3	44/1	
45/2	46/-	47/1	63/-	70/1	130/1	133/-	135/2	145/-	146/-	147/2	131/-	134/-	
138/-													



Orders required for the following round

By the early deadline

SR11





1856-R23

The CGR comes along, so we have just the one round.

OR10

Don queried the CPR credit, while Pete mentioned that the WR escrow money seemed to have got lost. Both destinations were reached last time but I didn't spot them. If you are laying tiles with the specific intention of connecting to your destination, then you should state that in your orders to avoid the risk of it being missed.

OR10	Pres	Lay	Run	Pay	Notes	Price	Credit	Trains
GW	LG	-	190	Yes	① ②	125E	34	6
THB	PC	65:L15:1	220	Yes	-	110A	9	5
CV	WM	123:L15:1	300	No	③	90A	133	D 5
CGR	RT	8:I16:6	380	No	④	100A	461	-
CPR	DS	14:N3:3	190	Yes	-	75F	358	5

- Notes: ① 700 to the bank for a '6' train
 ② The CGR forms, absorbing the CA, GT, LPS and WR - par price is 100A - Rob is the President, and takes two '4' trains from the LPS
 ③ 750 and a '4' train to the bank for a Diesel
 ④ Diesel borrowed from the bank

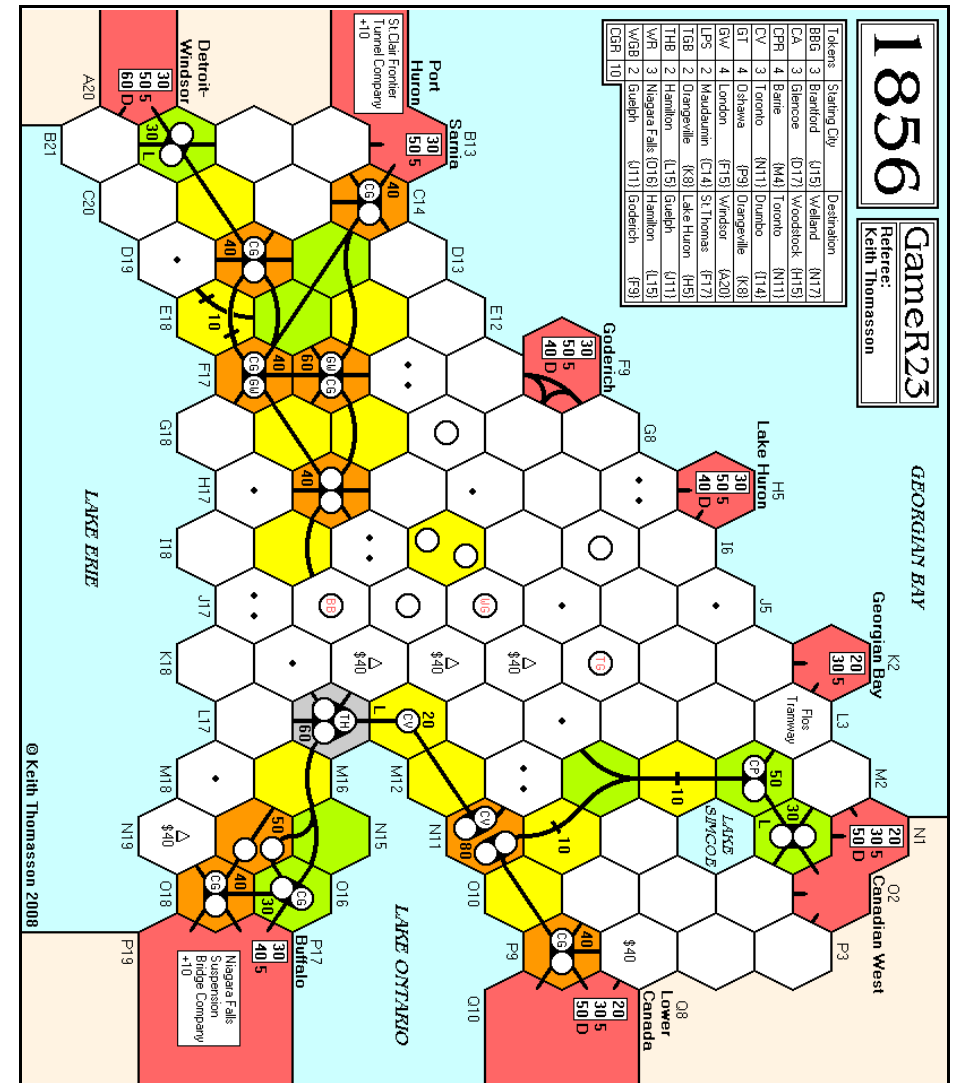
Cash Flow	b/f	OR10	c/f	Value	%	Certs
Pete Campbell	485	132	617	1,577	22.7	6½
Willem Moene	195	0	195	1,035	14.9	6½
Lyndon Gurr	588	171	759	1,934	27.8	9
Rob Thomasson	821	38	859	1,609	23.1	5
Don Smith	232	95	327	802	11.5	4½

Portfolio	BBG	CPR	CV	GW	TGB	THB	WGB	CGR
Pete Campbell	-	-	-	-	-	6P	-	3
Willem Moene	-	-	6P	-	-	-	-	3
Lyndon Gurr	-	3	-	6P	-	-	-	2
✱ Rob Thomasson	-	2	-	-	-	-	-	6P
Don Smith	-	5P	-	-	-	-	-	1

Bank (new)	10	-	4	-	10	4	10	-
Price (par)	-	70	100	70	-	100	-	100
Bank (pool)	-	-	-	4	-	-	-	5
Price (pool)	-	75F	90A	125E	-	110A	-	100A
Company credit	-	358	133	34	-	9	-	461
Tokens	3	3	1	2	2	1	2	3
Trains	-	5	D 5	6	-	5	-	-

Bank cash: 8,248 Certificate limit: 13 Trains: Diesels
 Current operating order: GW, THB, CGR, CV, CPR

Tiles	Tile number/Availability													Three Operating Rounds between Stock Rounds			
	1/1	2/1	3/3	4/2	5/2	6/1	7/7	8/10	9/9	55/1	56/-	57/3	58/2				
	69/1	14/3	15/3	16/1	17/1	18/1	19/1	20/1	23/4	24/2	25/-	26/1	27/1				
	28/-	29/1	59/1	120/1	121/1	59/1	40/1	41/3	42/3	43/2	44/1	45/2	46/2				
	47/2	63/2	64/1	65/1	66/-	67/1	68/1	70/1	122/-	125/-	126/-	127/1	123/-				
	124/1																



Orders required for the following round

By the early deadline

SR6



1870-K23

No trains are bought or transferred.

OR11 - SR7

The SP starts this round priced at 180A rather than 180C. It's price rise at the end of the last stock round headed in the wrong direction, but to the right price.

OR11	Pres	Lays	Run	Pay	Notes	Price	Credit	Trains
MP	LG	9:K2:2	8:L1:2	480	Yes	-	200C	82
SP	LR	63:M6:1	-	260	Yes	-	200A	692
SLSF	DS	23:F13:1	-	140	No	-	140C	211
TP	JS	63:H17:1	-	220	No	-	120B	638
SSW	LG	9:I2:1	8:H1:2	390	Yes	-	140B	381
GMO	WM	14:K16:2	-	160	Yes	-	110A	594
MKT	DS	23:G14:3	-	160	Yes	-	90F	48
IC	JS	15:M20:6	-	280	No	-	72D	506
ATSF	WM	9:G4:2	-	140	No	-	68C	452
FW	LG	8:G2:3	-	330	No	①	55G	995

Notes: ① 40 to the bank for terrain costs

Stock Round 7

Lionel	Lyndon	Don	Willem	John
- 2 TP (▼100D)	- 1 MKT (▼82G)	+ SLSF pool	+ FW new	+ FW new
+ FW new	+ IC pool			
+ GMO new	✗	✗	+ IC new	IC redeems from John
+ IC new	✗	✗	✗	✗
✗	Priority for SR8			

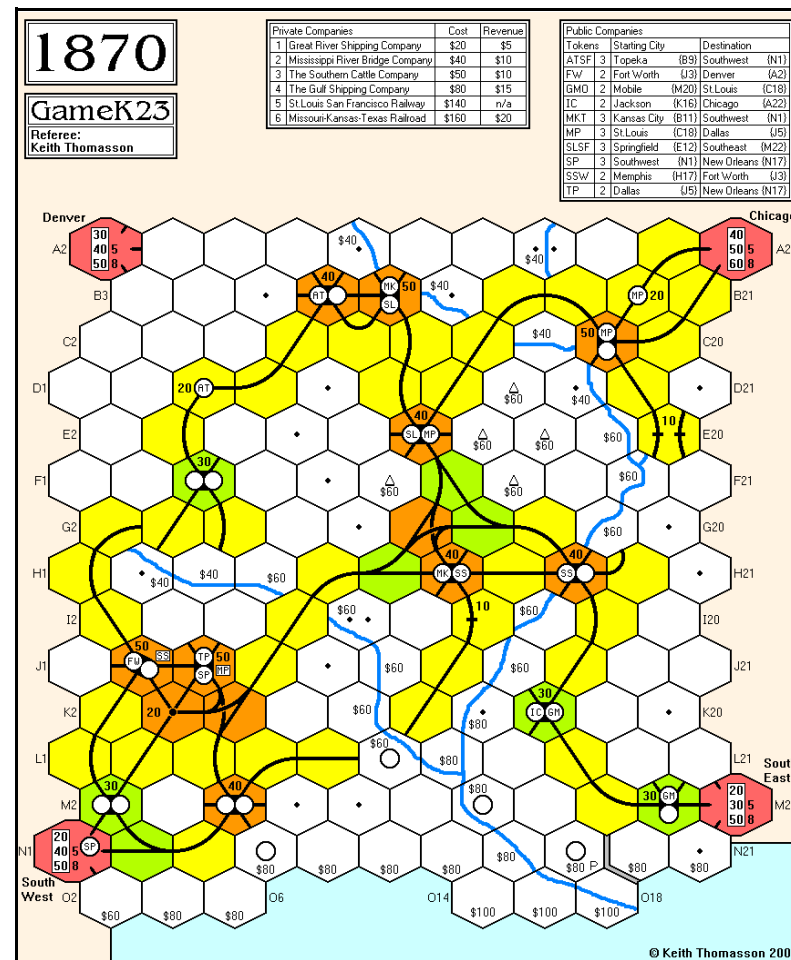
Cash Flow	b/f	OR11	SR7	c/f	Value	%	Certs
John Shelley	581	129	4	714	2,409	17.1	12/14
Lionel Robbins	909	330	-10	1,229	3,469	24.5	12/13
Lyndon Gurr	1,496	538	18	2,052	4,842	34.3	13/18
Don Smith	502	154	-140	516	2,051	14.5	10
Willem Moene	77	96	-150	23	1,363	9.6	12/13

Portfolio	ATSF	FW	GMO	IC	MKT	MP	SLSF	SP	SSW	TP
John Shelley	-	2	-	4P	1	1	1	1	1	5P
Lionel Robbins	1	1	1	1	-	2	-	6P	2	-
Lyndon Gurr	1	6P	-	1	-	6P	-	-	6P	1
Don Smith	-	-	-	5P	1	5P	1	1	-	-
Willem Moene	6P	1	6P	1	-	-	1	-	-	-

Bank (new)	2	-	3	2	-	-	-	-	1	-
Price (par)	82	68	100	82	72	76	100	100	90	82
Bank (pool)	-	-	-	-	3	-	2	-	-	2
Price (pool)	68C	60F	110A	72D	82G	225B	140C	200B	140B	100D
Company credit	452	995	594	434	48	82	211	692	381	638
Redeemed shares	-	-	-	1	-	-	1	2	-	2
Tokens	1+D	1+D	D	1+D	1+D	-	1+D	1+D	-	1+D
Trains	4	5	3	5	4	5	4	3	3	4
Bank cash: 2,939	Certificate limit: 13					Trains: 3 x '6', 3 x '8'				
Current operating order:	MP, SP, SLSF, SSW, GMO, TP, MKT, IC, ATSF, FW									

Lionel, your concerns over the TP credit missed the money it spent redeeming a share in the last stock round.

Tiles	Tile number/Availability				Three Operating Rounds between Stock Rounds							
1/-	2/1	3/3	4/6	5/2	6/2	7/7	8/6	9/8	55/1	56/1	57/4	58/3
69/1	14/1	15/1	16/2	17/2	18/2	19/2	20/2	23/1	24/2	25/3	26/2	27/2
28/2	29/2	141/2	142/2	143/1	144/1	39/1	40/2	41/3	42/3	43/-	44/1	45/2
46/2	47/2	63/-	70/2	145/2	146/2	147/1	170/-					



Orders required for the following rounds

By the early deadline

OR12, OR13

Adjudication can pause between rounds if requested



1870-R24

The ATSF joins the game.

SR4

The SLSF bought a '3' train in OR3, and was therefore able to run for 110 in OR4.

Stock Round 4

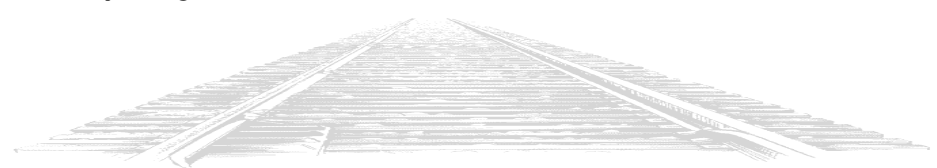
Stephen	Don	Willem	Roger	Mark
+ MKT new	+ MKT new	- 1 MKT (+90D) - 1 MP (PP) - 1 SLSF (+110B) + ATSF/Pres (90)	⇒	⇒
⇒	Price protects 1 MP	+ ATSF new	+ MKT new	- 1 MP (+110B) + SLSF new
+ MKT new	✗	+ ATSF new	+ MKT pool	+ SLSF new
✗	✗	+ ATSF new	+ SLSF new	SLSF redeems from the pool
✗	✗	+ ATSF new (floated)	✗	✗
✗	✗	✗	Priority for SR5	

Cash Flow	b/f	SR4	c/f	Value	%	Certs
Willem Moene	244	-200	44	824	22.7	7
Roger Krueger	305	-280	25	675	18.6	6
Mark Frueh	103	-80	23	683	18.8	5
Stephen Webb	268	-180	88	728	20.1	7
Don Smith	286	-210	76	716	19.8	5

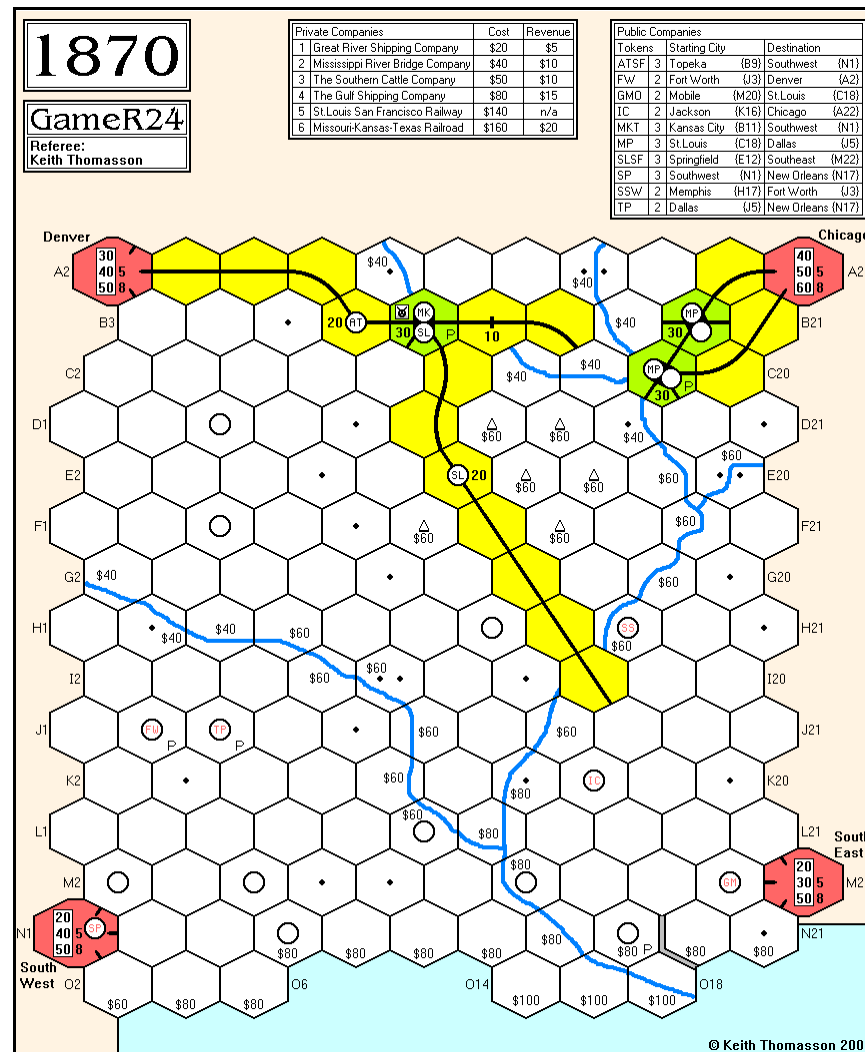
Portfolio	PCs	ATSF	FW	GMO	IC	MKT	MP	SLSF	SP	SSW	TP
Willem Moene	GSC, MKT	6P	-	-	-	-	-	-	-	-	-
✶ Roger Krueger	-	-	-	-	-	6P	-	1	-	-	-
Mark Frueh	-	-	-	-	-	-	-	6P	-	-	-
Stephen Webb	GRSC	-	-	-	-	2	4	-	-	-	-
Don Smith	-	-	-	-	-	1	5P	-	-	-	-

Bank (new)	4	10	10	10	-	-	2	10	10	10
Price (par)	90				90	90	100			
Bank (pool)	-	-	-	-	1	1	-	-	-	-
Price (pool)	90B				90D	110B	110B			
Company credit	900				500	446	510			
Redeemed shares	-				-	-	1			
Tokens	3+D	2+D	2+D	2+D	2+D	1+D	1+D	3+D	2+D	2+D
Trains	-				3 2	3 2	3 2			
					2 2	2 2				

Bank cash: 9,588 Certificate limit: 13 Trains: 3 x '3', 5 x '4'...
Current operating order: SLSF, MP, MKT, ATSF



Tiles	Tile number/Availability				Two Operating Rounds between Stock Rounds							
1/1	2/1	3/3	4/5	5/2	6/1	7/9	8/16	9/16	55/1	56/1	57/4	58/4
69/1	14/3	15/2	16/2	17/2	18/2	19/2	20/2	23/4	24/4	25/3	26/2	27/2
28/2	29/2	141/2	142/2	143/1	144/1							



Orders required for the following rounds

By the early deadline

OR5, OR6

Adjudication can pause between rounds if requested



1895-X24

Nobody buys a '4H' train.

OR3 - OR4

OR3	Pres	Lay	Run	Pay	Mines	Notes	Price	Credit	Trains
OME	TF	4:D8:2	100	Yes	-	①	110B▲	422	2H 2H
STA	ST	38:C11:1	220	Yes	-	-	90D▲	121	3H 3H 2H
SD	RK	7:D20:1	90	Yes	30	②	80E▲	285	3H 2H

Notes: ① 60 to the bank for terrain costs
② 40 to the bank for terrain costs

OR4	Pres	Lay	Run	Pay	Mines	Notes	Price	Credit	Trains
OME	TF	9:E7:2	130	Yes	-	①	120B▲	408	2H 2H
STA	ST	9:F8:1	220	Yes	-	-	100D▲	187	3H 3H 2H
SD	RK	7:E19:5	90	Yes	60	②	90E▲	222	3H 2H

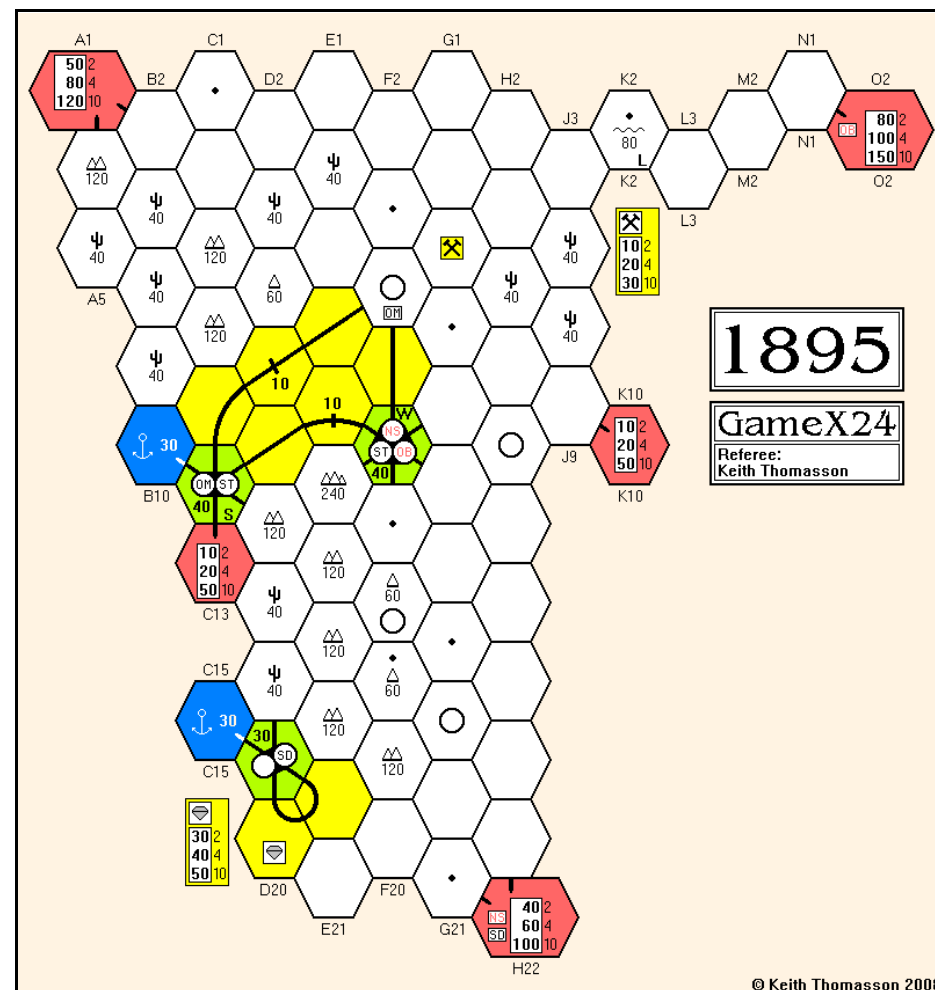
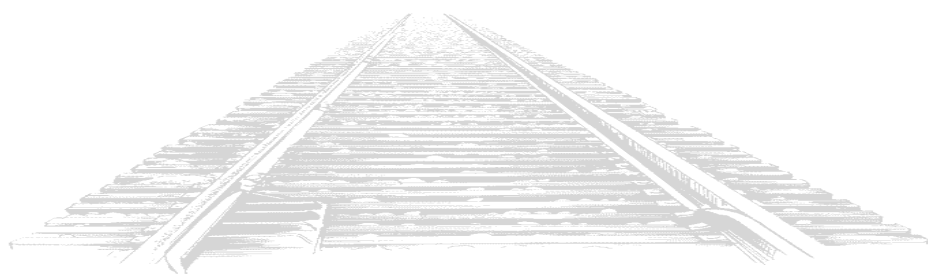
Notes: ① 40 to the bank for terrain costs
② 120 to the bank for terrain costs

Cash Flow	b/f	OR3	OR4	c/f	Value	%	Certs
Steve Thomas	46	141	141	328	1,018	36.2▲	7
Tim Franklin	46	60	78	184	904	32.1▼	5
Roger Krueger	56	82	85	223	893	31.7▼	9

Portfolio	PC/Obligs	STA	OME	SD	OB	NS
Steve Thomas	OME	6P	-	1	-	-
Tim Franklin	-	-	6P	-	-	-
Roger Krueger	ML / SD NS	1	1	5P	-	-

Bank (new)	3	2	3	10	9
Bank (pool)	-	-	-		
Price	100D	120B	90E		
Company credit	187	408	222		
Tokens	2	2	2	2	2
Trains	3H 3H 2H	2H 2H	3H 2H		
Bank cash: 5,785	Certificate limit: 13			Trains: 2 x '4H', 2 x '5H'...	
Current operating order:	OME, STA, SD				

Tiles	Tile number/Availability										Two Operating Rounds between Stock Rounds					
3/2	4/1	7/3	8/11	9/9	57/3	58/4	814/1	815/1	14/1	15/2	16/1	17/1				
18/1	19/1	20/1	23/2	24/2	25/2	26/2	27/2	28/2	29/2	38/-	887/1	888/1				



Orders required for the following round

By the early deadline

SR4



18EU-G23

Three Pullmans bought and five tokens placed.

OR9 - OR10

OR9	Pres	Lay	Run	Pay	Notes	Price	Credit	Trains
BN	SW	147:D5:4	470	Yes	①	150C▲	0	8 5
DR	DS	580:A10:1	770	Yes	-	135B▲	109	8 5
FN	LR	141:C16:2	360	Half	② ③	122D▲	39	8 P
RA	MF	147:G20:4	480	Yes	④	110D▲	40	6
RP	SW	57:E6:2	320	Half	⑤ ② ⑥	110C▲	9	5 P
RB	DS	-	420	Yes	-	90D▲	120	6
GS	DS	83:A8:1	260	Yes	②	82E▲	200	8 P
IS	MF	576:E18:3	340	Yes	-	70F▲	4	8

- Notes: ① Token placed in D7
② 100 to the bank for a Pullman
③ 122 to the bank for 1 pool share
④ Token placed in H19
⑤ Token placed in E6
⑥ 110 to the bank for 1 pool share

OR10	Pres	Lay	Run	Pay	Notes	Price	Credit	Trains
BN	SW	14:E6:2	470	Yes	①	165C▲	0	8 5
DR	DS	8:A12:1	680	Yes	-	150B▲	109	8 5
FN	LR	9:D17:3	480	Yes	-	135C▲	87	8 P
RA	MF	577:M16:3	480	Yes	-	122D▲	40	6
RP	SW	8:F5:3	390	Yes	-	122C▲	48	5 P
RB	DS	-	430	Yes	-	100D▲	120	6
GS	DS	583:A10:1	440	Yes	-	90E▲	200	8 P
IS	MF	582:M16:5	540	Yes	②	75F▲	4	8

- Notes: ① Token placed in E6
② Token placed in D13

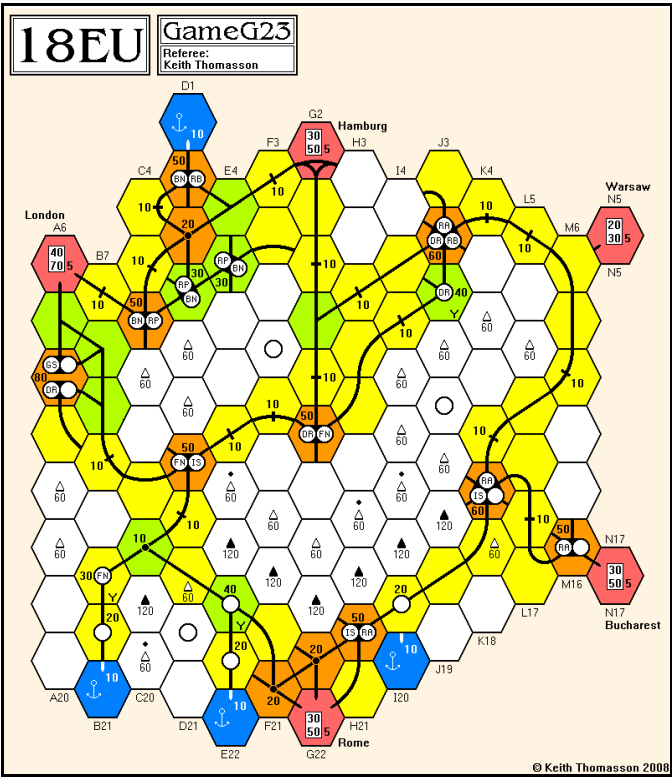
Cash Flow	b/f	OR9	OR10	c/f	Value	%	Certs
Peter Berlin	21	52	88	161	341	2.4▲	2
Lionel Robbins	444	600	724	1,768	3,732	26.0▼	13
Mark Frueh	317	634	775	1,726	3,358	23.4▲	13
Don Smith	29	751	819	1,599	3,389	23.7▲	13
Stephen Webb	160	577	684	1,421	3,515	24.5▼	13

Don, when we get to the next operating rounds, remember that you're also running the RB. Assuming that the Presidency doesn't change during the stock round, of course.

Tiles		Tile number/Availability		Two Operating Rounds between Stock Rounds									
3/6	4/1	7/1	8/7	9/9	57/4	58/6	201/6	202/7	14/3	15/3	80/3	81/4	
82/2	83/2	141/4	142/4	143/2	144/2	576/3	577/4	578/2	579/3	580/1	581/2	145/4	
146/4	147/2	544/3	545/3	546/3	582/2	583/-	584/-	611/8	513/5				

Portfolio	BN	DR	FN	GS	IS	RA	RB	RP
Peter Berlin	-	-	-	2	-	-	-	-
Lionel Robbins	3	3	5P	-	-	2	1	-
Mark Frueh	1	1	1	-	6P	6P	-	-
Don Smith	-	5P	-	6P	-	-	5P	-
Stephen Webb	6P	1	-	-	-	2	1	5P

Bank (new)	-	-	-	-	-	-	-	-
Treasury shares	-	-	1	-	-	-	-	1
Bank (pool)	-	-	3	2	4	-	3	4
Price	165C	150B	135C	90E	75F	122D	100D	122C
Company credit	0	109	87	200	4	40	120	48
Tokens	1	1	2	4	1	1	3	2
Trains	8.5	8.5	8 P	8 P	8	6	6	5 P
Bank cash: 4,717	Certificate limit: 13				Trains: 3 x '8' and 2 x Pullman			
Current operating order:	BN, DR, FN, RA, RP, RB, GS, IS							



Orders required for the following round

By the early deadline

SR5



18KAS-P23

Some critical changes involving
the arrival of the Diesels.

SR7

I was so caught up in checking the rules when the B&O doubled a town for the Ruhr off-board area that I forgot to include the income from its second train. That allowed it to exchange a '4' train for a Diesel, which reduced the NYNH dividend to 360 and forced the B&M to buy a Diesel. Tony had to sell a CPR share to fund this. I also missed some notes for the C&O. It paid 80 for terrain costs and gave the NYNH 1 for a '6' train.

Stock Round 7

Lyndon	Tony	Willem	Alan
- 4 NYNH {Pres to Tony} + C&O pool	+ CPR new	+ Erie pool	+ B&M pool
+ B&M pool	✗	+ NYC new	+ CPR new
+ C&O new	✗	+ NYC new	✗
+ C&O new	✗	+ NYC new	✗
+ C&O new	✗	+ C&O new	✗
✗	✗	+ CPR new	✗
✗	✗	✗	<i>Priority for SRB</i>

Cash Flow	b/f	SR7	c/f	Value	%	Certs.
Alan Harvey	693	-163	530	2,447	25.8▲	13/15
Lyndon Gurr	943	229	1,172	2,975	31.4▼	11/20
Tony Sait	114	-100	14	1,970	20.8▼	15/16
Willem Moene	638	-555	83	2,081	22.0▲	10/16

Portfolio	B&M	B&O	C&O	CPR	Erie	NYC	NYNH	PRR
✱ Alan Harvey	1	5P	-	1	1	6P	1	2
Lyndon Gurr	2	-	9P	6P	1	1	2	1
Tony Sait	6P	5	-	1	2	-	3P	1
Willem Moene	1	-	1	1	6P	3	-	6P

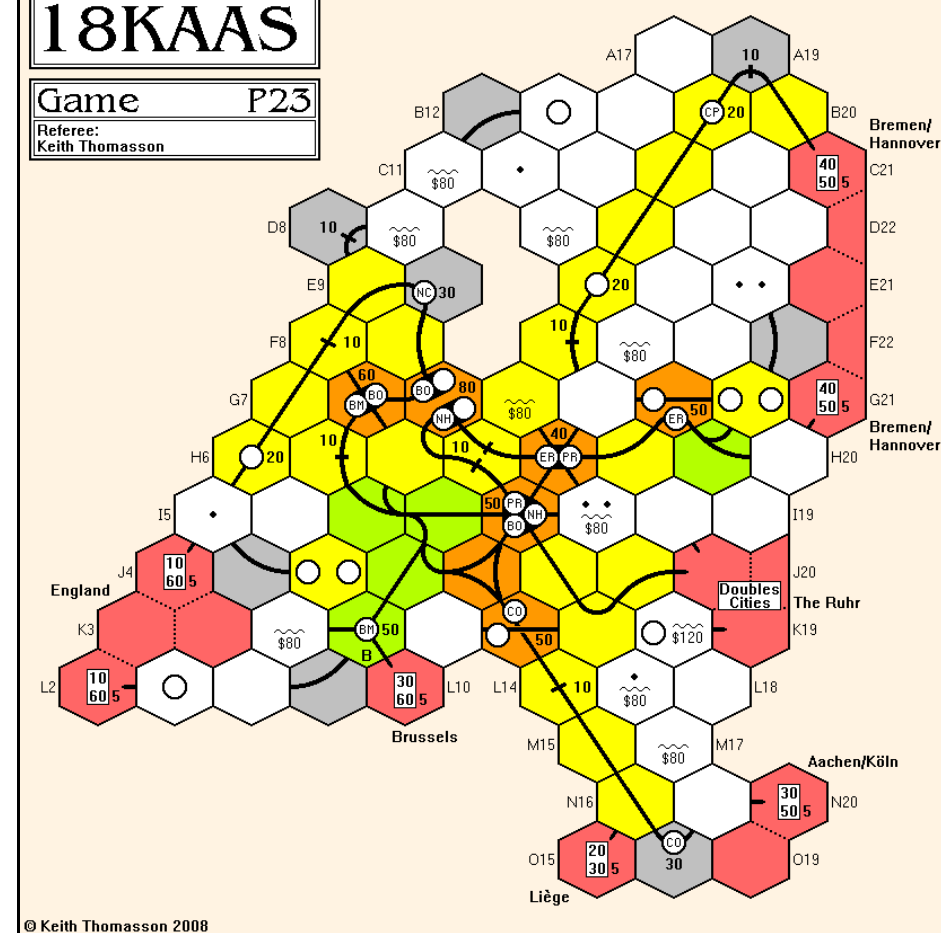
Bank (new)	-	-	-	-	-	-	-	-
Price (par)	67	100	67	100	100	76	67	71
Bank (pool)	-	-	-	1	-	-	4	-
Price (pool)	65F	126A	34F	126B	180A	111C	130D	60H
Company credit	0	210	67	71	56	0	2	350
Tokens	-	1	2	3	1	3	-	2
Trains	D	D	6	5	5	5	-	6

Bank cash: 9,445	Certificate limit: 16	Trains: Diesels
Current operating order:	Erie, NYNH, CPR, B&O, NYC, B&M, PRR, C&O	

Tiles	Tile number/Availability					Three Operating Rounds between Stock Rounds							
1/-	2/1	3/2	4/-	7/2	8/6	9/-	55/1	56/1	57/1	58/-	69/1	14/3	
15/2	16/1	18/1	19/1	20/1	23/3	24/3	25/1	26/-	27/-	28/-	29/-	53/-	
53+/1	54/1	59/2	59/1	40/-	41/2	42/2	43/2	44/1	45/2	46/2	47/1	61/1	
61+/-	62/-	63/2	63+/-	64/1	65/1	66/-	67/1	68/-	70/1				

18KAAS

Game P23

Referee:
Keith Thomasson

© Keith Thomasson 2008

Orders required for the following rounds

By the early deadline

OR11, OR12

Adjudication can pause between rounds if requested

6 NIMMT! 14

Time to take get your telepathic hats on once more.

NEW GAME

Most of these players come from the last game.

Bob Coull	1 Lingfield House, Lancaster Street, London, SE1 0RW
Michael Graystone	2 Grovelands Road, St.Paul's Cray, Orpington, Kent, BR5 3EF
Steve Ham	103 College Road, Norwich, NR2 3JP
Kevin Lee	149 Ludlow Road, Woolston, Southampton, SO19 2ER
Jim Reader	55A Yamate-Cho, Naka-ku, Yokohama 231-0862, Japan
Colin Sharpe	94 Surrey Grove, Sutton, Surrey, SM1 3PN

The starting positions for the four hands are shown below. You have your own sheets listing the cards that you have in each hand. Keep track of which cards you have played, because if you try to play a card that you no longer have, I'll pick one at random and, if I remember, give you a free penalty point.

Hand 1 (1-104)

3

24

35

60

1/1

2/1

3/2

4/3

Hand 2 (1-104)

9

26

63

66

1/1

2/1

3/1

4/5

Hand 3 (1-84)

15

26

38

75

1/2

2/1

3/1

4/2

Hand 4 (1-84)

23

47

51

77

1/1

2/1

3/1

4/5

Hands one and two are using the full deck of 104 cards, so some cards will never be seen. The other two hands use every card from 1 to 84. Play couldn't be simpler. Select one card from each hand and tell me what it is. I'll play them in numerical order and usually in the right places. Avoiding penalty points is never so simple, but by the time we get to those, all you can do is cross your fingers and see whether you got through the round unscathed.

Orders required
Round one - cards for each hand

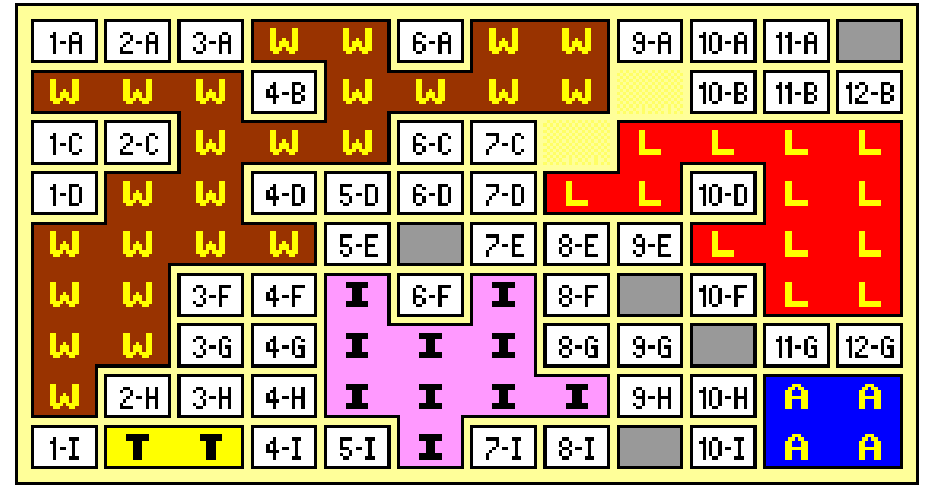


ACQUIRE 50

Festival comes and goes.

ROUND 9

John	9-D	Forms Festival, one free share. Buys 1 Festival @ £400.
Lyndon	5-H	Buys 2 American @ £500, 1 Festival @ £400.
Willem	1-G	No purchases.
Michael	7-G	Buys 3 Imperial @ £800.
Pete	2-B	Buys 3 Festival @ £400.
John	10-C	Luxor takes over Festival, bonuses for Pete (£4,000) and John (£2,000), John swaps 2 for 1, Lyndon sells 1 for £400, Pete sells 3 for £1,200. [Dead tiles: 8-C 9-B] Buys 2 Imperial @ £800.



	Lux	Tow	Ame	Fes	Wor	Con	Imp	Cash	Value
Willem Moene	8	10	-	-	-	5	-	-	£13,100
Michael Graystone	-	-	3	-	15	-	9	£10,000	£49,200
Pete Campbell	10	9	-	-	-	2	-	£12,500	£29,300
John Marsden	1	3	10	-	5	-	8	£500	£28,700
Lyndon Gurr	6	1	12	-	-	-	-	£1,000	£16,400
Bank Stock	-	2	-	25	5	18	8		
Chain Size	13	2	4	-	25	-	10		
Chain Value	700	200	500	-	900	-	800		

John's plans went slightly awry as he had less cash than he needed to complete them.

Playing sequence
Lyndon, Willem, Michael, Pete, John, Lyndon again

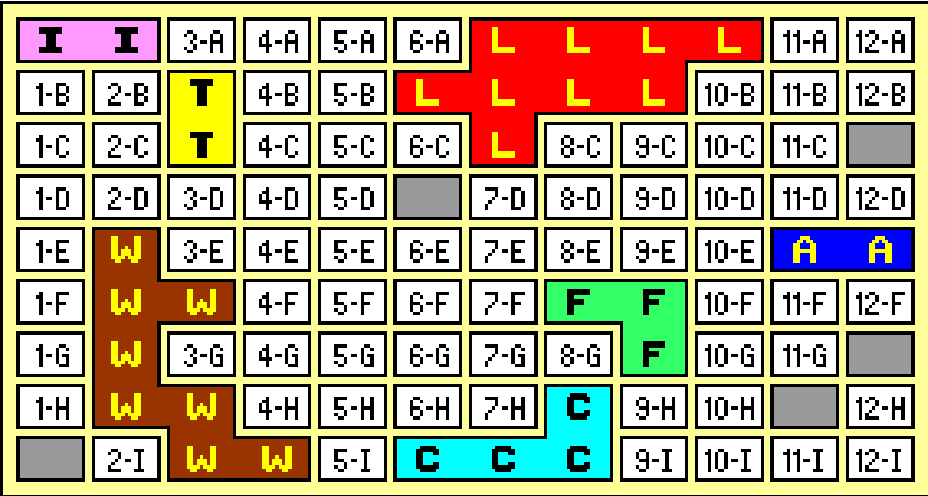


ACQUIRE 51

Tower goes and comes back again.

ROUND 5

Tony 6-D Buys 3 Festival @ £400.
Colin 2-G Worldwide takes over Tower, bonuses for Kevin (£2,000) and Bob (£1,000), Colin retains 4, Bob retains 7, Kevin swaps 8 for 4, retains 1, Gina sells 4 for £800, Tony sells 1 for £200. Buys 3 Festival @ £400.
Bob 3-C Forms Tower, one free share. Buys 3 Festival @ £400.
Kevin 2-E Buys 3 American @ £300.
Gina 10-A No purchases.
Tony 12-G Buys 3 Festival @ £400.



	Lux	Tow	Ame	Fes	Wor	Con	Imp	Cash	Value
Colin Sharpe	5	4	-	3	-	-	1	£6,600	£19,500
Bob Coull	-	8	3	3	-	1	5	£3,800	£20,900
Kevin Lee	-	1	3	-	7	4	-	£3,200	£21,900
Gina Teh	5	-	4	1	1	-	-	£3,400	£16,200
Tony Wilcock	3	-	-	6	9	-	1	-	£22,900
Bank Stock	12	12	15	12	8	20	18		
Chain Size	9	2	2	3	8	4	2		
Chain Value	600	200	300	400	700	600	400		

If anyone is willing to take Gina’s place in this game, let me know.

Playing sequence

Colin, Bob, Kevin, Gina, Tony, Colin again



ACQUIRE 52

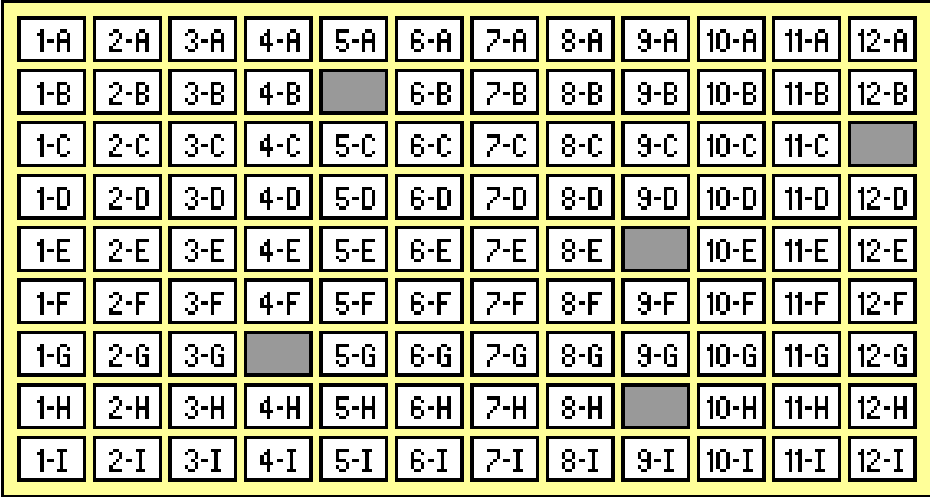
We’re off again.

NEW GAME

Welcome to the latest standard Acquire game to hit these pages. You will be dealing in this order.

John Colledge Dunoroch, 24 Brunstane Bank, Edinburgh, EH15 2NR
Colin Sharpe 94 Surrey Grove, Sutton, Surrey, SM1 3PN
Tony Wilcock Flat 25, Century House, 245 Streatham High Road, London, SW16 6ER
Michael Graystone 2 Grovelands Road, St.Paul’s Cray, Orpington, Kent, BR5 3EF
John Marsden 91 Westwood Avenue, Lowestoft, Suffolk, NR33 9RS

£6,000 rests in your bank accounts, and the board looks like this.



You all know the drill, so there is little else to say except have a good game.

Playing sequence

John C, Colin Tony, Michael, John M, John C again





AGRICOLA 1

We have our first new family member.

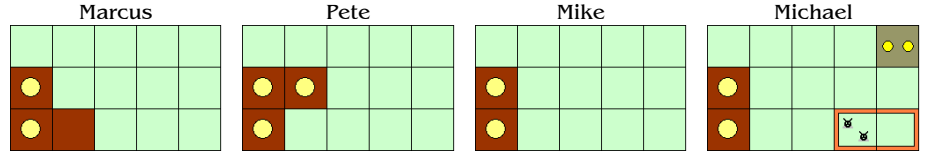
ROUND 5

- Actions**
- Marcus Building and/or Stables - extends his house {costs 2 reeds, 4 wood}
- Pete Family growth then 1 Minor Imp - Clay Roof {1 VP}
Pete can replace 1 or 2 reeds with the same amount of clay whenever he extends or renovates his home.
- Mike Major Improvement - Cooking Hearth {costs 4 clay}
- Michael Fences - fences two squares {costs 6 wood}
- Marcus Occupation - Undergardener {costs 1 food}
Whenever Marcus uses the Day Labourer action he also takes 1 vegetable
- Pete +3 Wood {gains 6 wood}
- Mike Start player, plays Stone Tongs {costs 1 wood}
Whenever Mike uses one of the stone action spaces he receives 1 additional stone
- Michael + 1 sheep {gains 2 sheep}

+1 wood {2 wood}	+2 wood {4 wood}	+3 wood {3 wood}	Private wood {8 wood} {2 Food ⇒Mike}	+1 clay {2 clay}	+2 clay {6 clay}
+1 reeds {2 reeds}	+1 food Catch fish {3 food}	+1 food Travelling players {2 food}	Take 1 grain	Take 2 food Day labourer	Take 1 reeds, 1 stone, 1 food
Building and/or Stables	Play 1 Occupation {0-1 food}	Play 1 Occupation {1-1-2 food}	Plough 1 field	Start player and/or Minor Imp	+1 sheep {1 sheep}
1 Major or Minor Imp	Fences	Sow and/or Bake Bread	Family growth then 1 Minor Imp	+1 stone {1 stone}	

The new action for round 6 is +1 stone.

This obviously seems picky to some, but please order using the given names of the actions, not your own interpretation. By ordering the given name of the action, I can just tick it off, rather than check through to make sure there is indeed only one action that fits what you're doing, or perhaps finding there is more than one, which leaves me choosing one to execute.



Marcus	Food	Fields	Pasture	Grain	Veg	Sheep	Boar	Cattle
	1	-	-	-	-	1 (pet)	-	-
	Clay	Reeds	Stone	Wood	House		Family	VPs
	-	-	-	-	Wood/3		2	-11
	Occupations		Undergardener, Wood Carver					
	Improvements		Fireplace, Hook Plough					

Pete	Food	Fields	Pasture	Grain	Veg	Sheep	Boar	Cattle
	-	-	-	1	-	-	-	-
	Clay	Reeds	Stone	Wood	House		Family	VPs
	4	-	1	7	Wood/3		3	-7
	Occupations		House Steward, Sycophant					
	Improvements		Axe, Clay Roof {1 VP}					

Mike	Food	Fields	Pasture	Grain	Veg	Sheep	Boar	Cattle
	2	-	-	-	-	-	-	-
	Clay	Reeds	Stone	Wood	House		Family	VPs
	-	2	-	3	Wood/2		2	-14
	Occupations		Carpenter, Master Forester					
	Improvements		Cooking Hearth, Corn Scoop, Stone Tongs					

Michael	Food	Fields	Pasture	Grain	Veg	Sheep	Boar	Cattle
	4	1 {2g}	1	1	-	2	-	-
	Clay	Reeds	Stone	Wood	House		Family	VPs
	-	-	-	2	Wood/2		2	-5
	Occupations		Cabinet Maker					
	Improvements		None					

Orders required	
Actions for the family, starting with Mike	Harvest - after round 7



BREAKING AWAY 17

Bikers on the high seas.

GAME OVER

Pos	Riders	Team Results	Individual Mention
1st	Orlando Gardner		Ralf (Kling Klang) 24 pts
2nd	Ralf	Ships Ahoy 1st	Orlando Gardner
3rd	Rhapsody	Kling Klang Radfahrers 2nd	(Otherland) 23 pts
4th	Mayflower	Otherland 3rd	Discovery (Ships) 16 pts
5th	DiNozzo	Destiny's Angels 4th	Mayflower (Ships) 15 pts
6th	Discovery	NCIS 5th	Rhapsody (Destiny) 12 pts
7th	Symphony	Mustn't Grumble 6th	DiNozzo (NCIS) 11 pts
8th	The Other		

1st	Kevin Lee	Ships Ahoy	46
2nd	Joakim Spångberg	Kling Klang Radfahrers	31
3rd	Jim Reader	Otherland	29
4th	Allan Stagg	Destiny's Angels	25
5th	Roger Trethewey	NCIS	17
6th	Richard Lunn	Mustn't Grumble	8

Kevin Lee (Ships Ahoy) (1st): Very pleasing to see everyone scoring - a good all round effort from the crew. Nice to see Discovery gain the most points too. Thanks as ever to the smooth running of the game from Keith and to all the other players for making it a good game.

Allan Stagg (Destiny's Angels) (4th): A good win for Kevin - the points he picked up in the sprints ensured his victory. Joakim and Jim did well at the end. Congrats to Kevin and thanks to you for GMing the game.

Roger Trethewey (NCIS) (5th): Congratulations to Kevin for a well fought game, and thanks to Keith for GMing.

Richard Lunn (Mustn't Grumble) (6th): A good race, I can start well, finish together - no riders dropped but I just don't get to score enough points. Well done to the winners, many thanks for running the game.

Kevin's bikes on the high seas won the day, pushing *Kling Klang Radfahrers* down to second place. *Ralf* still took top honours on individual merit, but *Discovery* and *Mayflower* both scored well.



BREAKING AWAY 18

The first sprint points are awarded.

ROUND 4

Pos	Riders	New
44	Rylla {10 pts} Evelyn Waugh {8 pts}	3
43	Louis Soares {6 pts}	5
42	Lenny Bruce {5 pts}	6
41	-	
40	Donner George II	3
39	John Grant Stratford Pershore Sarrask Blitzen	5
28	Evesham Bidford	12
37	Rudolph Kalvan Ralf Nikki Bull	14
36	Elvis	15
35	Florian Hestophes Dixen Antony Straker Wolfgang	15
34	Karl	15

Simon Brooks	Ditchling Beacon Bykers
A Rudolph	3 8 14 15
B Donner	3 10 15
C Dixen	3 15 15
D Blitzen	5 7 14
Dennis Frank (10)	Otherwhen
A Kalvan	3 10 10 14
B Rylla (10)	2 3 3
C Hestophes	10 15 15
D Sarrask	2 5 15
Steve Ham (13)	Flushed Away
A Elvis	1 9 11 15
B George II	3 3 6
C Evelyn Waugh (8)	3 3 6
D Lenny Bruce (5)	4 6 7
Jim Reader	Blue Square Premier Champs
A John Grant	2 3 5 10
B Louis Soares	1 5 6
C Antony Straker	9 13 15
D Nikki Bull	1 10 14
Joakim Spångberg	Kling Klang Radfahrers
A Ralf	3 4 5 14
B Florian	3 3 15
C Wolfgang	4 4 15
D Karl	3 6 15
Mark Stretch	Avon Riders
A Evesham	3 7 12 14
B Stratford	5 7 15
C Pershore	5 8 11
D Bidford	8 9 12



Flushed Away strikes twice on the first sprint, netting second and fourth places. The team is set to strike a third time as George II will take sixth place.

The other three places will go to teams that have yet to score.

Orders required

Cards for round five



BUS BOSS 309-YRK

One solo run helps move
BOYCOTT into second place.

ROUND 7

Yorkshire

Round 7 Runs

			EBAY	BEAR	BOY	YRK	
1	7♥ Harrogate J♠ Selby	① YRK 11 ① BEAR 10 ③ BOYCOTT 5 ③ EBAY 4					11 13 6 0
2	A♦ The North 10♥ Keighley	① YRK 16 ② EBAY 9 ③ BOYCOTT 5	-7		+3/-2 +4		10 20 0
3	7♦ Thirsk 6♠ Dewsbury	① BOYCOTT 9 ① YRK 8 ① EBAY 8 ④ BEAR 4	+2	+2	+3/-2 -2	+2/-3	10 11 6 2
4	8♦ York K♥ Settle	① BOYCOTT 30					30
6	8♥ Bradford J♣ Great Driffield	① YRK 13 ② EBAY 7 ② BOYCOTT 6 ④ BEAR 4		+2/-4	+3 +2	-3	16 7 1 6
9	8♣ Withernsea 2♠ Sheffield	① BEAR 20 ② EBAY 10 ✕ YRK	+3 +3	-3 +3		-3 -3	20 4 6

Round 7 Routes

Buses of Yorkshire Conducting Open Top Tours (BOYCOTT) (Tony Robbins, Red)
Leyburn - Richmond, Harrogate - Leeds, Dewsbury - Wakefield (12)

Youthful Railway Knight (YRK) (Colin Sharpe, Blue)
Boroughbridge - Darlington - Richmond (12)

Extra Buses Around Yorkshire (EBAY) (Bob Coull, Black)
Pickering - Whitby, Pontefract - Barnsley (11)

Barnsley Expressways Are Rampant (BEAR) (Kevin Lee, Brown)
Doncaster - Scunthorpe, Leeds - Ilkley (11)

Scores

	Runs:	1	2	3	4	6	9	Builds	Score
YRK	29	11	10	11	-	16	6	-12	71
BOYCOTT	28	6	0	10	30	1	-	-12	63
BEAR	31	13	-	2	-	6	20	-11	61
EBAY	30	0	20	6	-	7	4	-11	56

Round 8 Runs

5.	9♠ - 2♦	Wakefield to Darlington
7.	3♥ - 7♠	Hawes to Leeds (not yet available)
8.	2♥ - 4♠	Richmond to Barnsley
10.	A♠ - 5♦	The South to Redcar (not yet available)
11.	9♦ - J♥	Malton to Ilkley
12.	2♣ - 5♠	Grimsby to Huddersfield
13.	5♥ - J♦	Ripon to Filey
14.	Q♠ - K♣	Doncaster to Hornsea
15.	3♣ - 8♠	Scunthorpe to Leeds
16.	4♥ - 10♠	Leyburn to Pontefract
17.	4♦ - 6♠	Middlesbrough to Hull
18.	5♣ - Q♦	Barton to Scarborough

Runs	Routes
Enter up to 5	Buy in the order Tony, Bob, Kevin, Colin



BUS BOSS 312-MOR

Oh, those accents,
those spellings...

ROUND 2

Morocco

Bloody Useless Management (BUM) (Jim Reader, Yellow)
Casablanca - Berrechid - Settat - Sidi Bennour 88 - 12 76

Graystone Runs Ugly Brown buses Yet Again (GRUBBY) (Michael Graystone, Brown)
Marrakech - Settat - Berrechid 88 - 11 77

Buses Running On Own Kinetic Servomechanism (BROOKS) (Simon Brooks, Orange)
Marrakech - El-Kelaâ-es-Sraghna - Beni Mellal 88 - 11 77

Luxury African Transit Experience (LATE) (Pete Campbell, Blue)
Rabat - Khemisset, Casablanca - El-Jahida 88 - 11 77

Buses Around Morocco And North Africa (BAMANA) (Bob Coull, Black)
Beni Mellal - El-Kelaâ-es-Sraghna - Marrakech 88 - 11 77

Routes
Buy in the order Michael, Simon, Pete, Bob, Jim



OUTPOST 26

The Scientist and one Outpost are purchased.

ROUND 13

Commander Actions

Lyndon Auctioned a Scientists for 40. Marcus joined at 41, Geoff at 42, Willem at 43. Marcus dropped out at 48, Geoff at 72, Lyndon at 85. Willem got it for 85 reduced to 55 after Data Library discounts (w:6,7,8 r:9,12,13)

- Bought one New Chemicals Factory (w:8,9 r:9 m:17 n:18)

Jim Bought two Titanium Factories (o:3,3 w:6,7 t:7,8,8 m:18)

- Bought two Robots (t:10,10)

Marcus Bought one Research Factory (w:30)

- Bought three Robots (o:1,1 w:5 r:11,12)

Geoff Auctioned an Outpost for 100 and got it reduced to 85 after Heavy Equipment discounts (o:1,2,5,5 w:6,7,8 t:7,8,9,11 m:16) plus a free Titanium Factory

- Bought one Robot (w:10)

WillemPassed

PO	Name	Factories	Population	Robots	Production
1	Jim	2o,3w,7t	8 (8)	4 (8)	3w,7t,1m (108,10)
2	Geoff	2o,4w,4t	5 (10)	5 (5)	2o,1W,1T,2m (114,20)
3	Marcus	2o,6w,4r	8 (8)	4 (8)	2o,3w,1W,5r (122,15)
4	Lyndon	2o,5w,1r,3n	8 (8)	0 (0)	2W,1r,1m,4n (170,15)
5	Willem	2o,5w,2r	5 (5)	0 (0)	3w,7r (112,10)

PO	Name	Colony Cards	[35 VPs for the final phase]	Victory Points
1	Jim	HE, Nod, OL, Rob		28 (155)
2	Geoff	WH, HE, OL, Rob, OP		27 (255)
3	Marcus	WH, Nod, Rob, Lab		27 (180)
4	Lyndon	WH, Nod, OL, Lab		26 (180)
5	Willem	DL, DL, DL, Sci, Sci, Lab		19 (205)

Data Library	0	Sold out	Orbital Lab	0	Sold out
Warehouse	0	Sold out	Robots	0	Sold out
Heavy Equipment	1	(none left)	Laboratory	0	Sold out
Nodule	0	Sold out	Ecoplants	2	(1 more)
Scientists	1	(none left)	Outpost	1	(1 more)

Orders required

Round fourteen auctions, bids and purchases



OUTPOST 27

Two Warehouses go for the list price.

ROUND 7

Commander Actions

Marcus Passed

Lyndon Bought one Water Factory (o:1,2,5 w:5,7)

Jim Auctioned a Warehouse for 25 and got it reduced to 20 after Heavy Equipment discounts (o:2,3,4 w:5,6)

WillemAuctioned a Data Library for 15. Mark joined at 16. Mark dropped out at 45. Willem got it for 45 (o:1,4,5 w:5,6,8,8,8)

David Auctioned a Warehouse for 25 and got it reduced to 20 after Heavy Equipment discounts (o:2,4 w:4,10)

Mark Bought two Water Factories (o:3 w:7,30)

PO	Name	Factories	Operators	Colony Cards	Production	VPs
1	Jim	2o,3w	5p (8,0)	WH, HE, Nod	3o,4w (37,15)	9 (80)
2	Marcus	2o,4w	6p (8,0)	WH, Nod	4o,4w,1W (70,15)	9 (50)
3	Willem	2o,4w	8p (8,0)	DL, Nod	2o,1W (36,10)	9 (40)
4	Lyndon	2o,6w	7p (8,0)	Nod	1o,5w,1W (68,10)	9 (25)
5	David	2o,4w,1t	5p (5,0)	WH, HE	1o,3w,1W,2t (74,15)	8 (55)
6	Mark	2o,6w	5p (5,0)	DL, DL	1o,5w (38,10)	7 (30)

Data Library	1	(none left)	Heavy Equipment	2	(none left)
Warehouse	1	(none left)	Nodule	0	Sold out

Jim, when you said 'Bid for a Warehouse but do not bid on the first auction', I presumed you meant do not increase the bid, otherwise the auction would never get off the ground. As it was, you were unopposed.

Orders required

Round eight auctions, bids and purchases





PUERTO RICO 7

The Builder comes out but the Customs House remains.

ROUND 14

Kevin is the Captain.

Willem is the Craftsman (+1) and produces an extra Coffee.

Tony is the Builder and builds a Harbour.

Jim builds a University, Kevin a Large Indigo Plant and Willem a Wharf.

Jim is the Mayor (+1).

Roles	Builder	Captain	Craftsman	Mayor
	+1 Settler	+1 Trader	+2 Prospector	

Quarries	Plantations (Fields)					Trading House				Ship	Supply
None	Crn	Ind	Ind	Tob	Tob	Cof	Tob	-	-	8	11

Buildings	1 VP	SIP	1	SSM	2	SMA	×	HAC	1	CON	×	SWA	1
	2 VPs	LIP	2	LSM	1	HOS	2	OFF	×	LMA	1	LWA	1
	3 VPs	TOB	2	COF	×	FAC	×	UNI	1	HAR	×	WHA	1
	4 VPs	GUI	×	RES	×	FOR	×	CUS	1	CIT	×		

Cargo Ships	5: Coffee					6: Indigo					7: Corn				
	✓	✓	-	-	-	✓	✓	-	-	-	✓	✓	✓	✓	-

Jim Reader	DbIns: 1	Chips: 5	Fields: Qry✓✓✓ Crn× Ind✓ Sug×× Tob✓✓✓	Goods: Ind✓ Tob✓✓
Kevin Lee	DbIns: 0	Chips: 19	Fields: Qry✓✓ Ind✓ Sug✓✓× Cof××	Goods: Ind✓ Sug✓✓ Cof✓
Willem Moene	DbIns: 0	Chips: 15	Fields: Qry✓ Crn× Ind✓ Sug×× Tob× Cof✓✓	Goods: Crn✓✓ Sug✓ Cof✓✓
Tony Sait	DbIns: 1	Chips: 11	Fields: Qry✓✓ Crn✓×× Ind× Sug✓✓ Tob× Cof✓✓	Goods: Crn✓✓ Sug✓ Cof✓✓

Orders required

Round fifteen orders in the sequence Willem, Tony, Jim, Kevin



PUERTO RICO 8

The Craftsman produces goods and most are thrown away.

ROUND 11

Stephen is the Trader. The Trading House is emptied.

Jim is the Builder (+2) and builds an Office.

Allan builds a Wharf. Stephen builds a Small Warehouse.

John is the Craftsman and produces an extra Sugar.

Allan is the Captain (+1). All cargo ships are emptied.

Roles	Builder	Captain	Craftsman	+2 Mayor
	+1 Settler	Trader	+1 Prospector	

Quarries	Plantations (Fields)					Trading House				Ship	Supply
2	Crn	Crn	Crn	Sug	Tob	-	-	-	-	4	28

Buildings	1 VP	SIP	1	SSM	3	SMA	1	HAC	2	CON	2	SWA	×
	2 VPs	LIP	2	LSM	2	HOS	×	OFF	1	LMA	1	LWA	2
	3 VPs	TOB	3	COF	1	FAC	1	UNI	2	HAR	2	WHA	1
	4 VPs	GUI	1	RES	1	FOR	1	CUS	1	CIT	1		

Cargo Ships	5: Empty					6: Empty					7: Empty				
	-	-	-	-	-	-	-	-	-	-	-	-	-	-	-

John Hopkins	DbIns: 1	Chips: 10	Fields: Qry✓✓✓ Ind✓✓× Sug✓✓×	Goods: Sug✓
Allan Stagg	DbIns: 9	Chips: 10	Fields: Qry✓ Crn✓ Ind× Sug× Tob× Cof✓×	Goods: Cof✓
Stephen Webb	DbIns: 5	Chips: 15	Fields: Qry✓✓ Crn✓✓ Ind✓ Sug✓✓	2 men in San Juan Goods: Sug✓
Jim Reader	DbIns: 1	Chips: 15	Fields: Crn✓✓ Ind✓× Tob✓ Cof✓✓	Goods: Ind✓

Orders required

Round twelve orders in the sequence Jim, John, Allan, Stephen



PUERTO RICO 9

No new buildings or colonists.

ROUND 10

Pete is the Trader (+1). The Trading House is emptied.

Jim is the Captain (+1). All cargo ships are emptied.

Willem is the Settler and digs a Quarry.

Mike plants Coffee, Pete plants Sugar, Jim digs a Quarry.

Mike is the Prospector (+1).

Roles	+1 Builder	Captain	+1 Craftsman	+1 Mayor
	Settler	Trader	Prospector	

Quarries	Plantations (Fields)					Trading House				Ship	Supply
-	Sug	Tob	Tob	Tob	Cof	-	-	-	-	6	32

Buildings	1 VP	SIP	×	SSM	1	SMA	×	HAC	2	CON	1	SWA	×
	2 VPs	LIP	3	LSM	2	HOS	2	OFF	×	LMA	1	LWA	2
	3 VPs	TOB	1	COF	2	FAC	2	UNI	2	HAR	2	WHA	2
	4 VPs	GUI	1	RES	1	FOR	1	CUS	1	CIT	1		

Cargo Ships	5: Empty	6: Empty	7: Empty
	- - - - -	- - - - -	- - - - -

Mike Hutton	• Small indigo plant	• Small sugar mill	• Tobacco storage	• Small market
Dblns: 4	• Office			
Chips: 4	Fields: Qry✓✓ Crn✓ Ind✓ Sug× Tob✓× Cof××			Goods: Tob✓
Pete Campbell	• Small indigo plant	• Sugar mill	• Coffee roaster	• Small market
Dblns: 11	• Office	• Large market		
Chips: 4	Fields: Qry✓✓ Crn✓× Ind✓× Sug✓× Cof×			Goods: Crn✓
Jim Reader	• Small indigo plant	• Small sugar mill	• Construction hut	• Small warehouse
Dblns: 3				1 man in San Juan
Chips: 18	Fields: Qry✓×× Crn✓✓✓ Ind✓ Sug✓			Goods: Sug✓✓
Willem Moene	• Small indigo plant	• Small sugar mill	• Tobacco storage	• Small warehouse
Dblns: 5				
Chips: 11	Fields: Qry× Crn✓ Ind✓ Sug✓ Tob✓×× Cof×			Goods: Sug✓✓ Tob✓

Orders required

Round eleven orders in the sequence Jim, Willem, Mike, Pete



PUERTO RICO 10

Everyone now has some working production.

ROUND 4

Geoff is the Mayor (+1).

Kevin is the Builder (+1) and builds a Tobacco Storage.

Allan builds a Small Warehouse.

Jim is the Settler (+1) and digs a Quarry.

Allan plants Sugar, Geoff plants Tobacco, Kevin plants Indigo.

Allan is the Captain. The Corn ship is emptied.

Roles	Builder	Captain	+1 Craftsman	Mayor
	Settler	+1 Trader	+1 Prospector	

Quarries	Plantations (Fields)					Trading House				Ship	Supply
6	Crn	Sug	Tob	Tob	Cof	Crn	Sug	-	-	4	60

Buildings	1 VP	SIP	1	SSM	2	SMA	×	HAC	2	CON	2	SWA	1
	2 VPs	LIP	3	LSM	3	HOS	2	OFF	2	LMA	2	LWA	2
	3 VPs	TOB	2	COF	3	FAC	2	UNI	2	HAR	2	WHA	2
	4 VPs	GUI	1	RES	1	FOR	1	CUS	1	CIT	1		

Cargo Ships	5: Empty	6: Sugar	7: Empty
	- - - - -	✓ ✓ - - - -	- - - - -

Kevin Lee	• Small indigo plant	• Tobacco storage	• Small market
Dblns: 2			
Chips: 0	Fields: Ind✓× Sug× Tob×		Goods: ×
Jim Reader	• Small indigo plant	• Small sugar mill	
Dblns: 3			
Chips: 2	Fields: Qry× Ind✓ Sug✓ Cof×		Goods: ×
Allan Stagg	• Small sugar mill	• Small warehouse	
Dblns: 2			
Chips: 5	Fields: Crn✓✓ Sug× Cof✓		Goods: ×
Geoff Hardingham	• Small indigo plant	• Small market	
Dblns: 5			
Chips: 2	Fields: Qry× Crn✓ Ind✓ Tob×		Goods: Crn✓

Orders required

Round five orders in the sequence Kevin, Jim, Allan, Geoff



RAILWAY RIVALS 2066-G

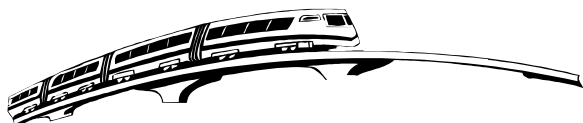
Kevin holds forth
on being fourth.

GAME OVER

1st	Michael Graystone	GREAT	309
2nd	Jim Reader	HOOTS	305
3rd	Don Shailer	KILT	296
4th	Kevin Lee	PEAR	293

Kevin Lee (PEAR, 4th): Wow, that was close - I don't feel disgraced coming 4th in such a tight game and I have the minor consolation of scoring the most points from rounds 7 to 12 having started round seven 43 points adrift of Don. Thanks to all the players for making it such a competitive game.

A close run affair indeed, but quite satisfaction from the leaders as we say goodbye.



RAILWAY RIVALS 2085-KU

One joint run, but
not involving JOINT.

ROUND 8

Kyushu

Round 8 Runs

			TRIKE	JOINT	GREAT	ONSEN	REEK	
8	45 Karatsu/Kurume 54 Nagasaki	① ONSEN 16		-2			-2	12
		② JOINT 7				+2	+1	10
		② REEKIE 7		-1		+2		8
9	35 Ozu/Yufuin 26 Nobeoka	① ONSEN 13	-1				-4	8
		① GREAT 12						12
		③ TRIKE 5				+1	-5	1
		✕ REEKIE	+5			+4		9
10	46 Saga 61 Shimbara	① JOINT 20					+4	24
		② REEKIE 10		-4				6
11	62 Kumamoto 66 Onsen hex	① GREAT 13	+1			+1		15
		① TRIKE 12			-1	-1	-1	9
		③ ONSEN 5	+1		-1			5
		✕ REEKIE	+1					1
12	36 Usa 14 Kushima/ Nichinan	① GREAT 15	+4					19
		① TRIKE 15			-4			11
13	12 Chiran 25 Hyuga	① ONSEN 30	-4					26
		✕ TRIKE				+4		4
14	53 Nagasaki 62 Shikoku	① {GREAT REEKIE} 15						15
								15

TRIKE will claim that he entered run 13, but the disturbance from the Sakurajima volcano made it impossible for him to run his train through Kagoshima.

Round 8 builds

Transit in Kyushu Express (TRIKE) (Tony Bromley, Orange)

Z20 - C59 - C57, W22 - W21.

-5 (builds) -1 (JOINT) -1 (GREAT) -1 (ONSEN) +14/-1 (REEKIE) = +5

Japanese Outer Island Network Transport (JOINT) (Bob Coull, Black)

None.

+1 (TRIKE) +1 (ONSEN) +1 (REEKIE) = +3

Graystone Railways Entertain Another Territory (GREAT) (Michael Graystone, Brown)

C55 - F53, buys ferry to Hondo.

-5 (builds) -6 (ferry) +3 (towns) +1 (TRIKE) +6 (ONSEN) +2 (REEKIE) = +1

Original Nifty Steam Engines are Neat (ONSEN) (Jim Reader, Yellow)

Kumamoto - A57 - Uta - C55 - D54, Nobeoka - Hyuga, U10 - U11.

-10 (builds) +1 (TRIKE) -1 (JOINT) -6 (GREAT) -2 (REEKIE) = -18

Rails Ever Extending Kyushu Internal Energy (REEKIE) (Rob Thomasson, Red)

B65 - D66, Z19 - Ozu - U22 - U23, D58 - D60.

-10 (builds) +1/-14 (TRIKE) -1 (JOINT) -2 (GREAT) +2 (ONSEN) = -24

Scores

	Runs:	8	9	10	11	12	13	14	Builds	Score
TRIKE	132	-	1	-	9	11	4	-	5	162
GREAT	70	-	12	-	15	19	-	15	1	132
JOINT	85	10	-	24	-	-	-	-	3	122
REEKIE	75	8	9	6	1	-	-	15	-24	90
ONSEN	53	12	8	-	5	-	26	-	-18	86

Round 9 Runs

15.	22 - 52	Miyazaki to Isehara/Sasebo
16.	11 - 55	Ibusuki/Makurazaki to Hondo
17.	65 - 16	Hitoyoshi to Kagoshima
18.	33 - 63	Oita to Outer Islands
19.	34 - 42	Beppu to Hita/Munakato
20.	63 - 23	Kumamoto to Saito
21.	41 - 64	Kita-Kyushu to Airports

Runs	Builds
Enter up to 4	Up to 10 points excluding payments to rivals





RAILWAY RIVALS 2096-B

BUM's build is one below the allowance.

ROUND 5

London and Liverpool {15 points for these builds}
Preston, London, Any Nice Town (PLANT) (Pete Campbell, Green)
F57 - E58 - E59 - Leicester, Preston - C4 - C5, J59 - Peterborough - N61 - Cambridge, Sheffield - Doncaster.
87 -1 (GREAT) +2 (HOE) +1 (TGV) +1 (COLIN) = 90

Heart of England (HOE) (Bob Coull, Black)
N18 - H15 - H14 - G14, K71 - K72 - London, H44 - J43 - Hull, L65 - Cambridge.
49 -2 (PLANT) -8 (GREAT) +1 (BUM) -1 (TGV) = 39

Graystone Railways Entertain Another Territory (GREAT) (Michael Graystone, Brown)
H18 - H14 - G14 - G8 - Manchester, E31 - D30.
43 +1 (PLANT) +8 (HOE) -1 (BUM) -1 (TGV) +1 (COLIN) = 51

Bloody Useless Management (BUM) (Jim Reader, Yellow)
Leicester - E60 - E61 - F61 - F62 - I64 - I71.
16 -1 (HOE) +1 (GREAT) -6 (COLIN) = 10

Theophilus' Goods Vehicles (TGV) (Simon Robertson, Blue)
I9 - M7 - N7 - A47, F65 - F66 - G67 - G69 - H69.
52 -1 (PLANT) +1 (HOE) +1 (GREAT) = 53

Coventry, Oxford, London Internal Network (COLIN) (Colin Sharpe, Red)
F51 - F48 - Doncaster - C47 - C46 - A45, L10 - L9 - K9.
21 -1 (PLANT) -1 (GREAT) +6 (BUM) = 25

Builds

Up to 14 points excluding payments to rivals



RAILWAY RIVALS 2112-I(N)

More payments, somewhat lighter.

ROUND 2

Ireland (North) {12 points for these builds}
Buses Running On Own Kinetic Servomechanism (BROOKS) (Simon Brooks, Orange)
U21 - Drumshambo - Collooney, Dublin - K64 - Drogheda - J62.
24 +5 (towns) +2/-2 (PADDY) = 29

Balinrobe Expressways Are Rampant (BEAR) (Kevin Lee, Black)
E63 - F62 - Kingscourt - F60 - Carrickmacross - H59 - Dundalk - J59 - Newry - J56, J59 - Greenore, Longford - V23.
24 +12 (towns) -8 (PADDY) +1 (GITCO) = 29

Monaghan-Armagh Rural Services (MARS) (John Marsden, Blue)
R16 - Collooney - O18 - O19 - N19 - N20 - L21 - Claremorris - L25.
5 +6 (towns) = 11

Powerful Automated Delivery and Distribution in Yellow (PADDY) (Jim Reader, Yellow)
Portadown - I56 - J56 - Newry - J59 - Dundalk - I62 - J62 - Drogheda - K64.
35 +4 (towns) +2/-2 (BROOKS) +8 (BEAR) +4 (GITCO) = 51

Green Irish Trains Connecting at Omagh (GITCO) (Tony Sait, Green)
Enniskillen - X15 - W16 - W18 - Drumshambo, Dungarvan - G53 - Armagh - J56.
44 -1 (BEAR) -4 (PADDY) = 39

Builds

Up to 14 points excluding payments to rivals



SAINT PETERSBURG 1

AH yes, how to recover in the late stages of this one...

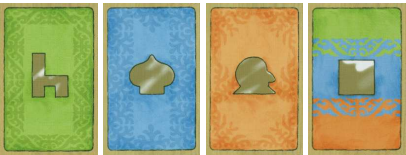
GAME OVER

1st	Sharon Khan	85
2nd	Rob Thomasson	82
3rd	Mike Hutton	80
4th	Geoff Hardingham	63

Mike Hutton (3rd): Aw shucks. Even if I lost my way a little in the mid-game I don't believe there was a lot I could do about that. Close all the same. Congrats to Sharon, thanks to the K-man, and I look forward to the next list opening...



The K-man? Another nickname to live up to. Hopefully there's not too much involved with this one.





SAINT PETERSBURG 2

Only the Workers attracted interest.

PHASE 2-W

Round 2 - Workers Phase

Tony	Pete	Kevin	Marcus
+ Czar and Carpenter	+ Lumberjack	+ Gold Miner	+ Ship Builder
✗	✗	✗	Shepherd → Weaving Mill from hand
✗	✗	✗	✗

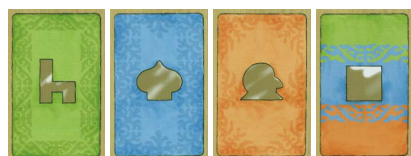


Players	Rubles	VPs	Worker	Building	Aristocrat	Leads Phase	Cards
Kevin	22	1	9r + 0v	0r + 1v	0r + 0v	Trading	27
Marcus	25	0	12r + 0v	0r + 0v	0r + 0v	Building	16
Tony	16	1	9r + 0v	0r + 1v	0r + 0v	Worker	19
Pete	19	1	9r + 0v	0r + 0v	4r + 1v	Aristocrat	25

Players	Cards in hand	Cards in play
Kevin		Gold Miner x 2, Fur Trapper, Market
Marcus	Customs House	Lumberjack, Ship Builder, Weaving Mill
Tony	Customs House, Secretary	Shepherd, Fur Trapper, Czar and Carpenter, Market
Pete	St. Isaac's Cathedral, Senator	Lumberjack x 2, Fur Trapper, Controller

Orders required

Round two Building phase led by Marcus



PHOENICIA 1

None of the phase 4 development cards make it into the game.

ROUND 9

Actions

Geoff Auctioned Public Works for 12. Lyndon joined at 13, Mark at 14. Lyndon and Mark dropped out at 15. Geoff got it for 15 reduced to 8 for City Centre discount (4/4 cards)

- Auctioned Public Works for 12. Lyndon joined at 13, Mark at 14. Lyndon and Mark dropped out at 15. Geoff got it for 15 reduced to 8 for City Centre discount (5/4 cards - 1 change)
- Trained a worker and sent him Advanced Hunting (5 card - 2 change)
- Bought 4 VPs with his City Centres (5/5 cards + 2 wealth)

Lyndon Auctioned Ships for 14. Mark joined at 15. Lyndon dropped out at 18. Mark got it for 19 (5/5/5/4 cards)

- Auctioned Ships for 14 and got it (5/5/5 cards - a change)
- Converted a production card (4) to wealth

Mark Auctioned Merchant Quarter for 9. Stephen joined at 10. Mark dropped out at 10. Stephen got it for 10 (5/5 cards)

- Moved a worker from Hunting to Improved Mining (5/4 cards - 1 change)

Stephen Sent a new trained worker Clothmaking (6/6 cards - 1 change)

Michael Trained 2 workers and sent them Farming (6/5 cards - 1 change)

Name	VPs	Prod	Activities	U	T	Tools	Limits	In Hand	Discounts
							(c+t)	(c+t)	
O Geoff	38	18	1f 4ah 1im	-	-	-	7+6	0+1	-3 Caravan -9 City Walls -1 Smelter -7 Public Works
1 Lyndon	19	24	2f 0h 2c	-	-	1f 1h	9+6	1+6	-8 Ships -8 Trade Fleet -8 Port
2 Mark	17	23	2f 0h 3im	-	-	2h	7+3	0+1	-1 Smelter
3 Stephen	18	18	1f 2h 2c	2	-	-	8+3	0+2	-7 Dye House
4 Michael	12	16	7f 2h	4	1	-	4+6	1+1	-4 Dye House

Development cards owned

Geoff Hardingham	Caravan x 2 / City Centre x 2 / Fort / Granary / Prospector / Public Works x 3 / Smelter / Tracker x 2
Lyndon Gurr	Dye House / Glassmaking / Granary / Indentured Worker / Ships x 2 / Shipyard x 2
Mark Stretch	Caravan / Glassmaking x 2 / Indentured Worker / Merchant Quarter / Prospector / Ships / Smelter
Stephen Webb	Dyer x 2 / Dye House x 2 / Fort / Merchant Quarter
Michael Longdin	Dyer / Granary / Fort / Refugee Settlement x 2

Geoff has 38 points and wins - well done. Lyndon takes second while Stephen pulls up to third. We'll round up next time, so let me know how this worked for you.



SCEPTRE OF ZAVANDOR 2

The final round of auctions.

ROUND 17

I missed the Artifacts discount for Lyndon and Marcus last time, They both gain an Opal, Lyndon because he didn't have to sell it, and Marcus because he ordered the purchase of one that didn't happen.

Actions

Lyndon Auctioned the Owl for 120 and got it for 100 (+20 1st place -20 Artifacts -20 Mask of Charisma) - sold one Diamond {80}

Marcus Auctioned the Raven for 121. Michael joined at 122. Marcus dropped out at 122. Michael got it for 80 (-20 Artifacts -20 Mask of Charisma) {80}

► Auctioned the Phoenix for 121 and got it for 91 (+10 2nd place -20 Artifacts -20 Mask of Charisma) {91}

Simon Increased knowledge of Accumulation to level 1 {2}

Michael Passed

Roger Increased knowledge of Artifacts to level 4 {16}

Kevin Bought 3 Sapphires {36}

PO	Name	Character	Gems	Active/Limit	Dust	Energy Cards	Hand Limit
1	Lyndon	Kobold	o:1 s:6	7/9	4	s:1	10
2	Marcus	Fairy	o:3 s:2 d:4	9/9	-	-	11
3	Simon	Elf	o:3 e:1	4/5	20	-	6
4	Michael	Mage	o:1 e:2 d:2	5/7	-	-	8
5	Roger	Druid	o:3 s:1	4/7	7	-	9
6	Kevin	Witch	s:6	6/7	-	s:1 d:1 r:1	8

PO	Name	Artifacts	Knowledge						VPs/Gems
			Ge	En	Fi	Sa	Ar	Ac	
1	Lyndon	MM CP CP EL MC MW CF Fox Owl	-	-	-	4	4	4	59/7
2	Marcus	CB MB EL MC MW Phoenix Tomcat	-	4	-	4	4	-	48/13
3	Michael	SB CB MB EL MC CF CC Raven	2	-	2	4	4	-	42/9
4	Simon	SB RS RS MM CP CF CC CC	-	4	-	4	4	1	32/5
5	Kevin	SB MW	4	-	-	4	-	4	16/6
6	Roger	RS CB MB MM	-	-	4	4	4	-	16/4

The three new Sentinels brings us to a close, with five Sentinels sold.

1st	Lyndon Gurr	59
2nd	Marcus Pratt	48
3rd	Michael Longdin	42
4th	Simon Cutforth	32
5th	Kevin Lee	16/6
6th	Roger Trethewey	16/4

Congratulations to Lyndon, and many thanks to everyone for the game. The usual round up will take place next time, so tell me how it was for you.

NEWS FROM THE ROCK

www.fwtwr.com/fwtwr/



This is the section that provides news of the Internet sibling of this zine.

✧ Here are the current web ratings for active players with a rating of 2.0 or more. People are included if they have competed five games.

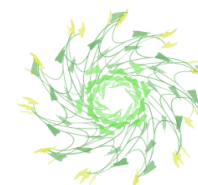
-	Didier Renard	4.714
▲	Lew Stansby	3.660
▲	Ken Boucher	3.375
-	David Hilbert	3.188
-	Roger Krueger	3.042
-	Victor Cronshaw	2.882
▲	Per Hallberg	2.636
▼	Rob Thomasson	2.618
▼	Peter Hawkins	2.595
-	Michael Bakken	2.444
-	Dave Burton	2.413
-	Michael Longdin	2.178
▲	Michael Graystone	2.146
▼	Peter Beck	2.134
▼	Willem Moene	2.132
▲	Pete Campbell	2.091
▼	Gareth Lodge	2.069
▲	Brian O'Farrell	2.063
-	Mick Haytack	2.043

✧ Completed games and winners:

Saint Petersburg e764	Pete Campbell
Carcassonne e788	Lew Stansby
Acquire e792	Michael Graystone/Willem Moene

✧ New games and start dates:

1856 e806 {1856-Z25}	Aug 26th
Puerto Rico e807	Aug 30th
Acquire e808	Sep 13th



PREVIEW

The start packet for the new 1837 game is going spiffingly via e-mail. In this context, spiffingly means that Geoff Hardingham had computer problems and didn't get the original prompt, so we lost a week or two due to that. Now that the first item has been sold, I think Tony Bromley is away, so we'll have another break. I think I'll start the next one after the holiday period is over.

The list of game for the next issue is a lonely 1835, but 18GA may join it. It all depends whether I can get the map and other support stuff done in time.

Here's the plan for new games due to start in the next issue.

#158: 1835



ZINES RECEIVED

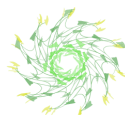
A summary of zines that I've received recently.

Date	Zine/Issue
Sep 7th	The Tangerine Terror 42
Sep 9th	Minstrel 315
Sep 10th	Ode 297

RATINGS

This is the list of subscribers with a rating of 2.0 or greater. People are included if they have completed five games.

-	Roger Krueger	4.200
-	David Smith	3.619
-	Tony Bromley	3.333
-	Simon Robertson	3.277
▲	Lyndon Gurr	3.273
-	Mark Frueh	3.200
-	Lionel Robbins	3.000
▲	Geoff Hardingham	2.778
▲	Marcus Pratt	2.717
-	Steve Thomas	2.563
▼	Stephen Webb	2.300
-	Sharon Khan	2.286
-	Michael Graystone	2.189
-	Colin Sharpe	2.162
-	Rob Thomasson	2.147
-	Tony Robbins	2.050



WHO PLAYS WHAT

Peter Berlin	1829-V21, 18EU-G23	Greg Payne	6n14, BB-313-MOR, Robo3
Tony Bromley	RR-2085-KU, RR-2117-ND	Marcus Pratt	Agr1, IW1, OP26, OP27, Robo3, StP2, Sceptre 2
Simon Brooks	BA18, BB-305-NLD, BB-312-MOR, GS7	Jim Reader	6n14, BA18, BB-304-EAN, BB-305-NLD, BB-309-YRK, BB-312-MOR, GS7, OP26, OP27, PR7, PR8, PR9, PR10, RR-2085-KU, RR-2096-B, RR-2112-I(N), RR-2117-ND, Robo3
Pete Campbell	1826-H025, 1829-U25, 1830-G24, 1856-R23, Acq50, Agr1, BB-308-YRK, BB-312-MOR, PR9, RR-2096-B, RR-2112-I(N), RR-2117-ND, StP2	Lionel Robbins	1829-V21, 1829-U25, 1870-K23, 18EU-G23
John Colledge	Acq52	Tony Robbins	BB-309-YRK
Bob Coull	6n14, Acq51, BB-304-EAN, BB-309-YRK, BB-312-MOR, RR-2085-KU, RR-2096-B, RR-2117-ND, SB1	Simon Robertson	BB-305-NLD, RR-2096-B
Simon Cutforth	Sceptre 2	Tony Sait	1830-V1-N24, 18Kaas-P23, PR7, RR-2112-I(N)
Dennis Frank	BA18	Don Shailer	BB-304-EAN, BB-305-NLD, BB-308-YRK, BB-313-MOR, CM1, GS7, RR-2117-ND, Robo3, Sop340, SB1
Tim Franklin	1830-L23, 1850-R22, 1895-X24, Sop340	Colin Sharpe	6n14, Acq51, Acq52, BB-304-EAN, BB-309-YRK, RR-2096-B
Mark Frueh	1830-G24, 1870-R24, 18EU-G23	John Shelley	1826-H25, 1829-U25, 1830-L23, 1870-K23
Michael Graystone	6n14, Acq50, Acq52, BB-308-YRK, BB-312-MOR, RR-2085-KU, RR-2096-B, Sop340, SB1	David Smith	OP27
Lyndon Gurr	1826-H25, 1850-R22, 1856-R23, 1870-K23, 18Kaas-P23, Acq50, OP26, OP27, Phoenicia 1, Sceptre 2	Don Smith	1826-E22, 1830-G24, 1830-V1-N24, 1856-R23, 1870-K23, 1870-R24, 18EU-G23
Steve Ham	6n14, BA18, GS7, Robo3, SB1	Joakim Spångberg	BA18, GS7, Sop340
Geoff Hardingham	OP26, Phoenicia 1, PR10	Allan Stagg	PR8, PR10
Alan Harvey	1830-V1-N24, 1850-R22, 18Kaas-P23, CM1	Mark Stretch	1830-V1-N24, BA18, BB-305-NLD, OP27, Phoenicia 1
Mike Head	1830-L23, IW1	Steve Thomas	1895-X24
John Hopkins	1829-V21, PR8	Rob Thomasson	1829-V21, 1829-U25, 1856-R23, BB-313-MOR, RR-2085-KU
Mike Hutton	1829-V21, Agr1, PR9	Roger Trethewey	GS7, Sceptre 2
Sharon Khan	IW1	Stephen Webb	1826-H25, 1830-G24, 1830-V1-N24, 1850-R22, 1870-R24, 18EU-G23, CM1, Phoenicia 1, PR8
Roger Krueger	1870-R24, 1895-X24, Robo3	Tony Wilcock	Acq51, Acq52, StP2
Kevin Lee	6n14, Acq51, BB-309-YRK, BB-313-MOR, GS7, PR7, PR10, RR-2112-I(N), StP2, Sceptre 2		
Michael Longdin	Agr1, CM1, Phoenicia 1, Sceptre 2		
Richard Lunn	1830-L23		
John Marsden	Acq50, Acq52, BB-304-EAN, BB-305-NLD, BB-313-MOR, CM1, RR-2112-I(N)		
Willem Moene	1830-L23, 1830-G24, 1856-R23, 1870-K23, 1870-R24, 18Kaas-P23, Acq50, OP26, OP27, PR7, PR9		



OUTSIDE EDGE

FOR WHOM THE DIE ROLLS is brought to you by:
Keith Thomasson, 14 Stepnells, Marsworth, Near Tring, Herts, HP23 4NQ

CONTENTS

◇ Games ◇	Acquire 50	35	RR-2085-KU	50
*****	Acquire 51	36	RR-2096-B	52
◇ New ◇	Agricola 1	38	RR-2112-I(N)	52
6 nimmt 14	Breaking Away 17	40	RR-2117-ND	Held
Acquire 52	Breaking Away 18	41	RoboRally 3	Held
Bus Boss 313-MOR	Bus Boss 304-EAN	Held	Saint Petersburg 1 . . .	53
*****	Bus Boss 305-NLD	Held	Saint Petersburg 2 . . .	54
1826-H25	Bus Boss 308-YRK	Held	Sceptre of Zavandor 2 .	56
1829-V21 {North}	Bus Boss 309-YRK	42	Sopwith T340FW	Held
1829-U25 {South}	Bus Boss 312-MOR	43	Space Blast 1	Held
1830-L23	Canal Mania 1	Held	*****	
1830-G24	Golden Strider 7	Held	◇ Bits and Bobs ◇	
1830-V1-N24	Industrial Waste 1	Held	Board2Pieces	5-6
1850-R22	Outpost 26	44	Deadlines	Below
1856-R23	Outpost 27	45	News from the Rock . .	57
1861-B23	Phoenicia 1	55	Preview	58
1870-K23	Puerto Rico 7	46	Ratings	58
1870-R24	Puerto Rico 8	47	Waiting Lists	2
1895-X24	Puerto Rico 9	48	Who Plays What	59
18EU-G23	Puerto Rico 10	49	Zines Received	58
18Kaas-P23	RR-2066-G	50		

DEADLINES

Wednesday October 8th 2008

18xx Games - Friday October 3rd

Future main deadlines: November 12th December 17th January 21st

E-mail orders must be sent as plain text messages. Do not send as e-mail attachments.
Unreadable submissions may be treated as No Move Received.