

FOR WHOM THE DIE ROLLS

July 2007

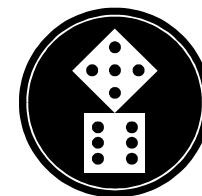
Published by Keith Thomasson

Issue 145

This page has been added to the PDF copy so that reports that appear on facing pages in the paper copy are shown side-by-side.



£2.00



INSIDE STORY

This is FOR WHOM THE DIE ROLLS #145, a game playing magazine for game players, published by Keith Thomasson, 14 Stepnells, Marsworth, Near Tring, Herts, HP23 4NQ. This issue costs £2.00 (including postage).

E-mail: Keith@Thomasson.com

Web site: www.fwtwr.com

Subscription payments can be sent via PayPal to Keith@Thomasson.com

Please specify the currency for international payments as GBP

Welcome to Pete Campbell.

WAIT

① means that number of players needed. ⇨③ means up to that number needed. ⇨ means there is no limit. ✱ means a list is full.

Games starting in this issue...

18Kaas Alan Harvey, Lyndon Gurr, Willem Moene, Tony Sait
6 nimmt! John Colledge, Bob Coull, Michael Graystone, Kevin Lee, Jim Reader, Don Shailer, Colin Sharpe, Mark Stretch
Bus Boss Bob Coull, John Marsden Jim Reader, Don Shailer, Colin Sharpe (East Anglia)

Games starting in the next issue...

✱ 1856 Don Smith, Lyndon Gurr, Willem Moene, Rob Thomasson, Pete Campbell
✱ Puerto Rico Jim Reader, Allan Stagg, John Hopkins, Stephen Webb
✱ Space Blast Steve Ham, Joakim Spångberg, Don Shailer, Jim Reader, Michael Graystone, Bob Coull

You should own these games or be familiar with their rules...

⇨④ 1829 (North or South) . Pete Campbell
⇨① 1830 Don Smith, Willem Moene, Stephen Webb, Pete Campbell
⇨④ 1830 variant maps . . . Alan Harvey
⇨① 1870 Roger Krueger, Willem Moene, Don Smith, Stephen Webb
① 1895 Steve Thomas, Roger Krueger
⇨⑤ 18Rhl Rhineland Waiting
⇨④ Acquire (Standard) Pete Campbell
✱ Canal Mania Alan Harvey, Stephen Webb, Michael Longdin, John Marsden, Don Shailer
⇨① Industrial Waste Sharon Khan, Mike Head, Marcus Pratt
⇨⑦ Outpost Willem Moene, David Smith, Jim Reader
⇨④ Phoenicia Michael Longdin
✱ Puerto Rico Willem Moene, Mike Hutton, Jim Reader, Pete Campbell
⇨③ Railroad Tycoon Michael Longdin

I supply everything you need for these...

②/⑧ Battle! Michael Graystone, Allan Stagg, Steve Ham, Marcus Pratt
✱ Breaking Away Steve Ham, Jim Reader, Mark Stretch, Simon Brooks
✱ Bus Boss Simon Robertson, Mark Stretch, Simon Brooks, Jim Reader, John Marsden, Don Shailer (The Netherlands)
⇨① Railway Rivals Bob Coull, Jim Reader, Rob Thomasson, Tony Bromley (Jim Reader's new Kyushu map)

£1 fee for each game, unless otherwise stated, subsidising the cost of the zine

START

Welcome to issue #145. I really thought this issue wasn't going to make it out the door when I started the 18xx adjudication weekend without one full set of orders. It seems that a combination of memory and postal delays had combined to bring this about. Imagine my surprise to get to the end of the main deadline day and find I had all the orders for all the games - a complete turnaround.

The number of orders that arrive without the sender's name included is on the increase. These are all arriving via e-mail, so think on this. Relying on your name appearing as the sender of an e-mail is like relying on your name on the outside of an envelope - it does not appear in the orders themselves, which then become anonymous and have to be identified by deduction or research.

Regarding e-mail orders, please do not put important information in the subject line alone. The message itself should be complete and self-contained, with your name, the game name, and other relevant information, such as the company your are operating in an 18xx game. Just because you are only operating one company doesn't make it easy for me to find it if the company name is not given. Think of the subject line as the envelope again, and put the information in the letter itself.

For those who don't notice right away, the deadlines for the next issue have been brought forward by two days, so the 18xx deadline is a Wednesday while the main deadline is a Monday. The reason for this is simple. The reason is simple. We're flying out to Indianapolis for the 40th GenCon convention early on the Monday after the production weekend, and that feels too tight for comfort.

If you really want to help, the earlier the orders can come in the better. Some people obviously work to the deadline but don't appear to actually spend all the time between receiving the zine and sending their orders thinking about them. So how about just doing your orders after the zine arrives rather than filing it for a couple of weeks? I tend to do that for the small number of games I play, because I know that if I leave it I'm going to lose track of the deadline.

A friend of our has a sone who is diving into the world of motor sport. This year he is driving in the Club Formula Ford league for the Midlands and the South. His name is James Rigby, and he's in the car at the back, by the way!

The biggest problem is funding, so we've decided to help them out for one race meeting this year. In exchange, Heron Games will be featured on the car. Club level Formula Ford is usually a low key affair, but as it's the 40th anniversary of Formula Ford this year, it could well gain a higher profile.



The race weekend we're sponsoring is at Snetterton on August the 4th/5th, so if you're close enough and have the time, why not come along and see some of the rising stars that may challenge Lewis Hamilton in a few years. The circuit is in Norfolk on the A11 between Thetford and Attleborough. ✱

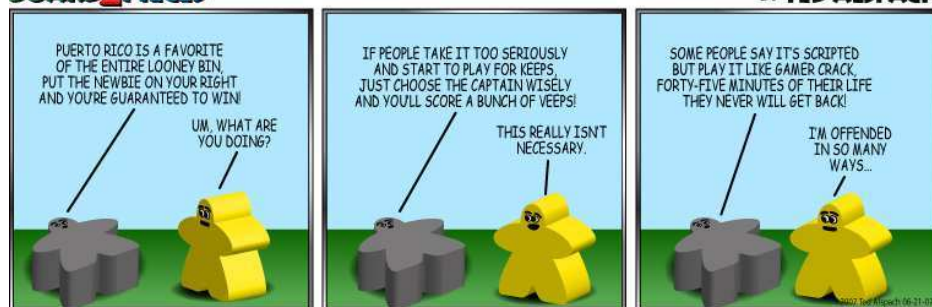
BOARD2PIECES

BY TED ALSPACH



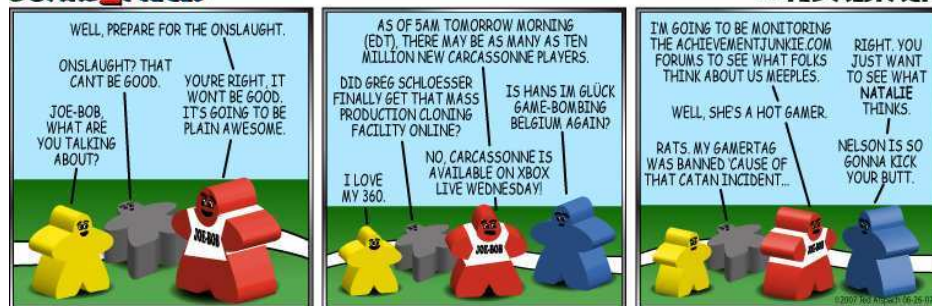
BOARD2PIECES

BY TED ALSPACH



BOARD2PIECES

BY TED ALSPACH



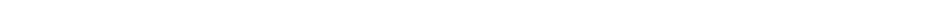
BOARD2PIECES

BY TED ALSPACH



BOARD2PIECES

BY TED ALSPACH



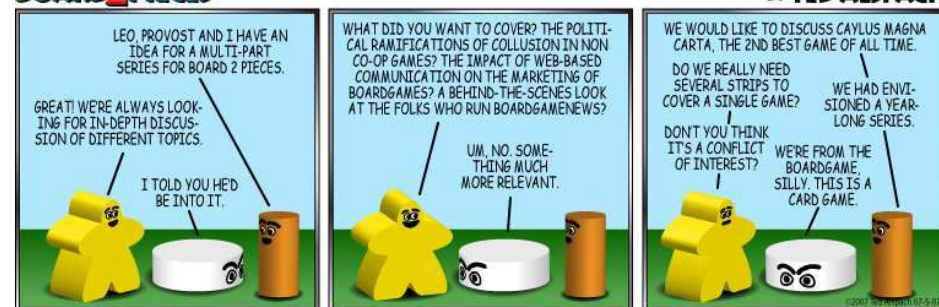
BOARD2PIECES

BY TED ALSPACH



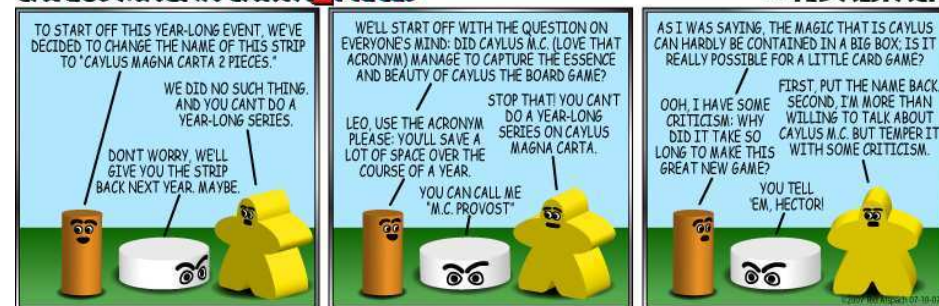
BOARD2PIECES

BY TED ALSPACH



CAYLUS MAGNA CARTA2PIECES

BY TED ALSPACH



BORED2PIECES

BY TED ALSPACH



BORED2PIECES

BY TED ALSPACH





18KAAS-P23

Let's see if I can
get this one right.

NEW GAME

Welcome to our second game of 18Kaas, which was published by ERJO Games (Erno and Joris). This is basically an 1830 clone on a map of the Netherlands. The four players for this game will deal in the following order.

Alan Harvey	6 Serina Avenue, Littleover, Derby, DE23 6JT
Lyndon Gurr	15b Hedley Street, Maidstone, Kent, ME14 1UG
Tony Sait	6 Hawkswood Avenue, Frimley, Surrey, GU16 5LH
Willem Moene	Dijkhuizen 4, 1112 SB Diemen, The Netherlands

You each start with \$600 and are looking at the usual 1830 private companies, although they're not in the usual places.

Schuylkill Valley Railroad	SVR	Cost	\$20	Revenue	\$5
Champlain & St.Lawrence Railway	C&StL	Cost	\$40	Revenue	\$10
Delaware & Hudson Railroad	D&H	Cost	\$70	Revenue	\$15
Mohawk & Hudson Railroad	M&H	Cost	\$110	Revenue	\$20
Camden & Amboy Railroad	C&A	Cost	\$160	Revenue	\$25
Baltimore & Ohio Railroad	B&O	Cost	\$220	Revenue	\$30

The notes I have on 18Kaas are repeated below, with some minor changes, such as the tile numbers for the three additional tiles the game introduces.

Two of the new tiles are marked 'B+' and replace the 'B' tiles used by the B&O. The old 'B' tiles are only used by the B&M in this game. My compromise for the 'B+' tiles is to use the numbers 53+ and 61+. The third tile is similar to the brown 40-value station, tile 63. It has one extra token space and is worth 50. I've used the number 63+ for this tile.

- ◇ The green tile 53+ and the brown tile 61+ may only be placed on G9 (the B&O home).
- ◇ The brown tile 63+ may only be placed on I13 (marked U for Utrecht). You may not place a standard 63 tile on this hex.
- ◇ The Ruhr off-board area has no value in itself. It doubles the value of all other cities on the route. The off-board area must be counted as a city on the route.
- ◇ Hex G13 is a yellow hex on the board. The first tile laid here must be yellow as there is no track to upgrade, but this cannot be laid until the green tiles are out.
- ◇ The New York-equivalent hex can be upgraded in two different ways.

The rule about the Ruhr off-board area was originally worded 'towns' not 'cities', but I changed this as the board I got last year states that it 'doubles cities'. My interpretation will be that the doubling of cities only applies to stations with token spaces and does not include 10-value stations.

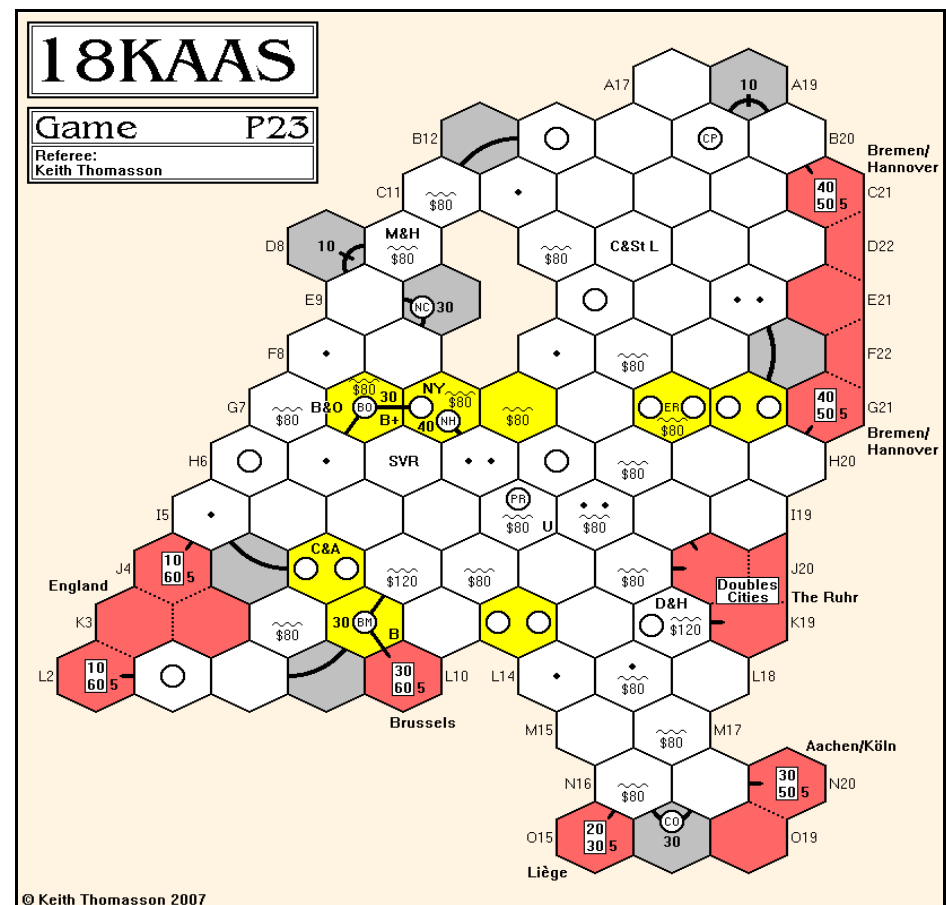
The locations of the private companies are shown on the map by the company abbreviation. When the B&O private is bought, the initial par price for the B&O public company will be set at \$100 unless you advise me otherwise.

The common approach to the bidding process is to indicate what you want to go for (or what you want to avoid) and the maximum you'll pay. Bids will be \$5 above the initial price or the last bid unless you advise otherwise. Some players just say 'buy whatever I'm offered', some also give a total limit on expenditure.

If anyone fancies orders like 'buy any', please let me know if you mean any one (and only one), or any (and all) that are offered to you. I've hit that particular problem before, and it an easy one to avoid once you know of it.

Maps and tile sheets are enclosed for everyone, but put those in a safe place until you need them.

After the sale of the private companies we'll have the tail end of the first stock round before we hit the first operating round. Enjoy the game.



Orders required for the following round

By the early deadline

Stock Round 1, private companies only, starting with Alan



1856-Y19

Never feel embarrassed at good fortune.

GAME OVER

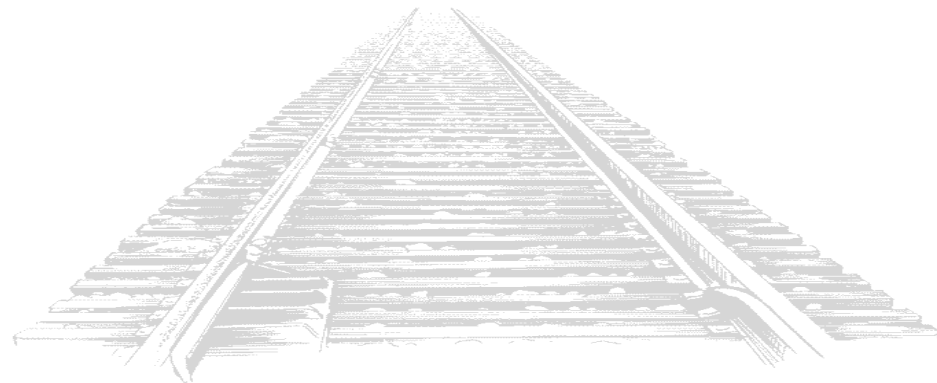
1st	Rob Thomasson	7,852	26.7%
2nd	Stephen Webb	6,797	23.2%
3rd	Mike Head	5,089	17.3%
4th	Peter Berlin	4,928	16.8%
5th	Martin Butcher	4,695	16.0%

Mike Head (3rd): I'm afraid I feel rather embarrassed at achieving anything other than an ignominious fifth place, because I made a series of errors including one truly dreadful one. It started pretty well, the LPS plus Shipping Company, but couldn't sell the private at full value and then disastrously sold LPS shares (losing control to Peter) to launch the CPR far too early. My belief that someone would buy the last '4' train so I could get a '5' was unfounded, and I kicked my heels for several frustrating rounds, refusing to buy. When I finally got the chance I had to take a loan and hope that the CGR didn't form immediately, which of course it did, so I had to fold the CPR, leaving me with 2 shares and less than 10% of the wealth! However, my obstinacy over the '5' train paid off - when Rob bought the Diesel aided by Martin's enthusiastic investment in TGB, those who had gone for '4' trains (including, ironically, Martin) got hosed, I finally got my act together with a good set of share purchases and watched the money roll in to just overhaul Peter.

Well done to Rob, and to Stephen (I liked your complex manipulation of the stock round to get CA the first '4' train purchase), thanks to Keith for excellent GMing.

Stephen Webb (2nd): I think the defining moment was when Rob produced his escrow cash to buy his Diesel - cementing what was already a strong position. That is one of those GM dilemmas - what info do you expect players to refer back for and what do you put on a plate for them. Well played, Rob and thanks Keith for your GMing and to the others for the game.

While we all like to think that our results are due to our own efforts, and willing to admit that our mistakes should be recognised as well, the truth is that results are brought about by our actions and those of the others in the game, who sometimes help unwittingly, or even deliberately, as they strive to improve their own positions. Take what you get!



1830-G20

Little to say.

GAME OVER

1st	Don Smith	7,007	22.8%
2nd	Willem Moene	6,554	21.3%
3rd	Roger Krueger	6,039	19.6%
4th	Martin Butcher	5,729	18.6%
5th	Stephen Webb	5,429	17.7%

Stephen Webb (5th): I was out of this as on as Don snatched the NYC from me. A good win for him - well done and thanks to everyone, including Keith for your GMing.

Little to say, but it seemed like a good game to me as well. Mind you, with all the others on the go I might be remembering details from another game!



1837-G21

The '5' trains come out and bring us into the later stages of the game.

OR10

I managed to let Don's specific train purchase order override the fact that the Bh was forced to buy a train. The Bh bought the '4+1', which in turn means the Gt bought the '4+2'.

OR10 Pres	Lay	Run	Mines	Pay	Notes	Price	Credit	Trains
MLB GH	8:E37:2	110	20	Half	-	-	-	-
U3 TR	29:D34:5	-	-	-	①	-	-	-
Ug DS	24:D24:4	110	-	Yes	②	210C▲	195	5 2G
Sd SW	435:H22:1	520	60	Yes	-	175D▲	335	4 3G
Bk SW	8:G21:4	420	60	Yes	③	148C▲	61	4E 3G
Kk TR	436:G17:1	-	-	-	②	112D▼	150	5
Bh DS	63:K21:1	220	-	Yes	④	104A▲	551	4+1
Th DS	63:F28:1	160	-	Yes	-	105D▲	162	4
Sb GH	432:H30:3	290	50	Yes	⑤	105D▲	229	4 2G
Gt SW	431:C23:3	230	-	Yes	⑥	97B▲	0	4+2 3+1
Ms TR	40:F14:1	360	40	Yes	-	87G▲	677	3+1 2G
Cl SW	216:D36:4	280	50	No	-	65H▼	755	4 2G

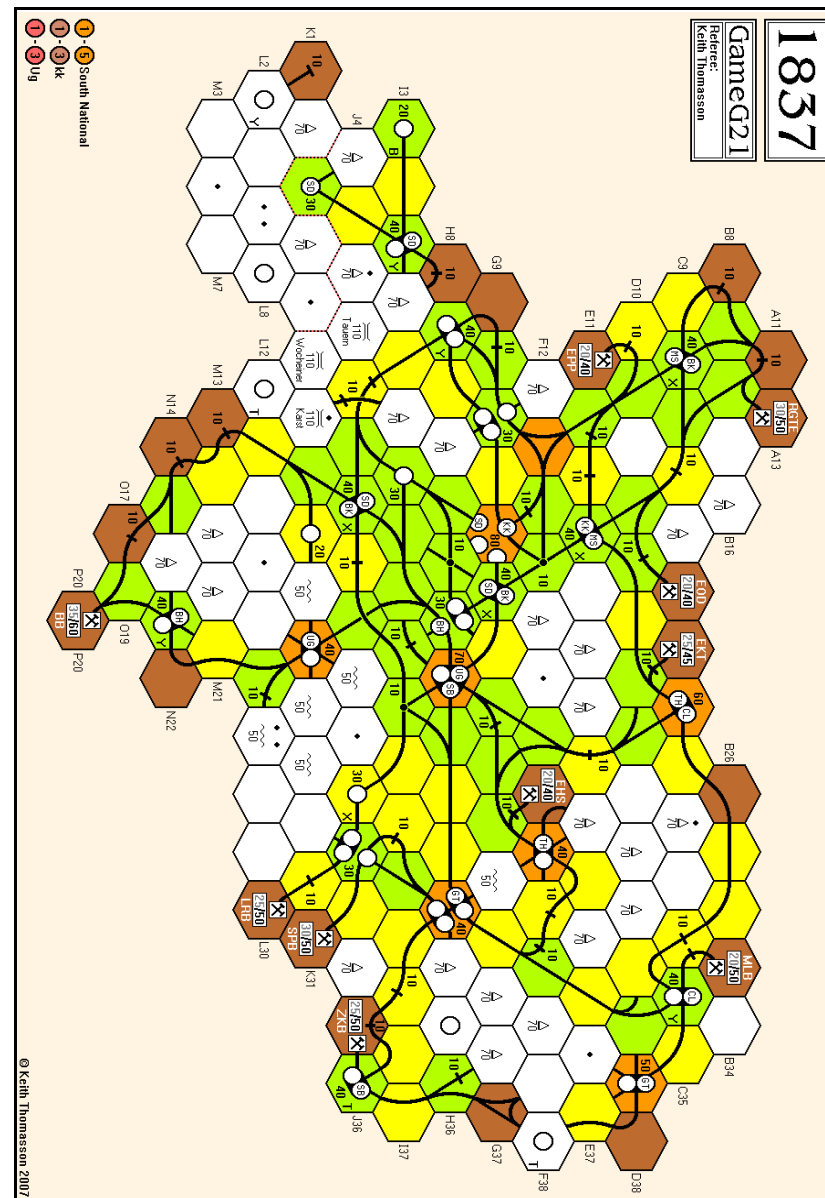
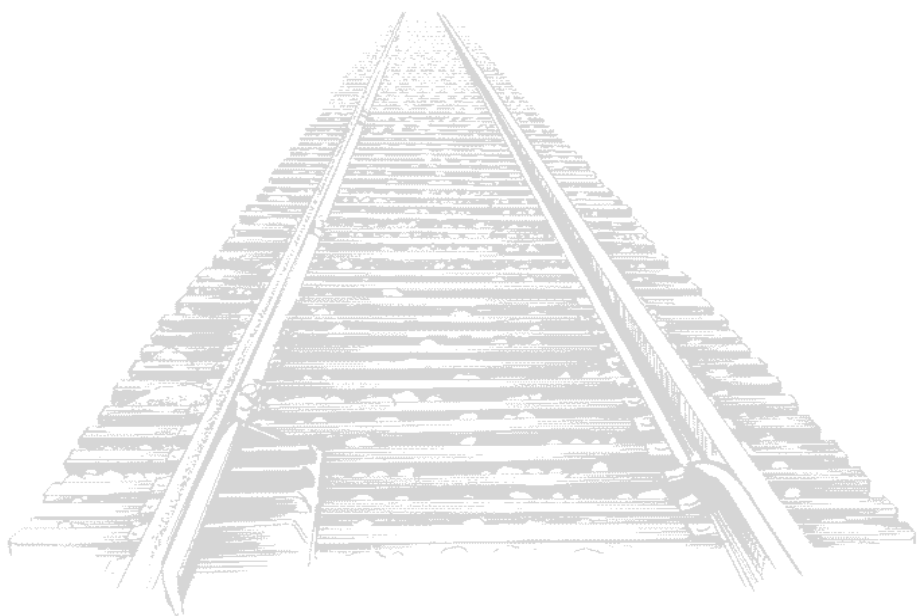
- Notes:
- ① 256 to the Ms for a '3' train
 - ② 800 to the bank for a '5' train
 - ③ 50 to the bank for terrain costs
 - ④ 120 to he bank for a token in H20
 - ⑤ 160 to the bank for a token in H22
 - ⑥ 240 to the Sd for a '3+1' train

Cash Flow	b/f	OR10	c/f	Value	%	Certs
Stephen Webb	286	579	865	3,472	25.0▼	14/18
Don Smith	201	272	473	2,567	18.4▲	14
Tony Robbins	594	499	1,093	3,837	27.6▲	19
Geoff Hardingham	1,034	755	1,789	4,038	29.0▼	15

Portfolio	Bh	Bk	Cl	Gt	Kk	Ms	Sb	Sd	Th	Ug
Stephen Webb	-	4D	5D	5D	1	-	-	5D	-	1
Don Smith	6D	-	-	-	-	-	-	-	6D	4D
Tony Robbins	-	4	-	-	6D	6D	-	1	1	2
Geoff Hardingham	-	2	-	-	-	4	6D	4	-	-

Bank (new)	4	-	4	5	3	-	3	-	3	-
Price (new)	104	104	75	97	120	70	97	142	91	175
Bank (pool)	-	-	-	-	-	-	1	-	-	-
Price (pool)	104A	148C	65H	97B	112D	87G	105D	175D	105D	210C
Company credit	551	61	755	0	150	677	229	335	162	195
Tokens	1	-	1	1	1	2	2	-	2	1
Trains	4+1	4E	4	4+2	5	3+1	4	4 3	4	5
		3G	2G	3+1		2G	2G	3G		2G
Bank cash: 6,933 Certificate limit: 21 Trains: 1 x '5E', 1 x '5+2'... 2 x '2G', 1 x '3G', 3 x '4G'										
Current operating order: Ug, Sd, Bk, Kk, Th, Sb, Bh, Gt, Ms, Cl										

Tiles	Tile number/Availability								Three Operating Rounds between Stock Rounds							
Yellow	1/2	2/3	3/5	4/7	5/2	7/8	8/17	9/13	55/1	56/1	57/1	58/9				
	69/2	201/3	202/4	401/4	402/2	404/4										
Green	12/2	16/3	17/1	18/1	19/2	20/3	23/7	24/5	25/2	26/4	27/3	28/3				
	29/2	30/1	31/1	87/-	88/1	204/2	205/2	206/2	207/1	208/1	405/3	406/2				
	408/1	410/1	411/1	412/1	413/-	414/1	415/1	416/-	417/1	418/1	419/2	420/2				
	421/2	422/-	423/2	424/-	425/1	426/1	427/1	429/1								
Brown	39/2	40/2	41/4	42/4	43/2	44/3	45/3	46/3	47/3	63/2	70/2	216/4				
	430/5	431/3	432/3	434/2	435/-	436/-										



Orders required for the following round

By the early deadline

SR8



1800-120

The D&RGW hits the top price while the C&S gains an extra train.

OR16 - OR17

OR16	Pres	Lay	Run	Pay	Notes	Price	Credit	Trains
D&RGW	WM	-	340	Yes	① ③	180A*	0	3E 2E 5
C&S	AH	806:D4:3	290	Half	② ④	160B*	373	2E 4

Notes: ① 40 to Willem and 10 to the D&RGW from the company Bond
 ② 50 to Alan from the company Bond
 ③ 350 to the bank for a '3E' train
 ④ 40 to the bank for a token in C1

OR17	Pres	Lay	Run	Pay	Notes	Price	Credit	Trains
D&RGW	WM	-	410	Yes	①	200A*	0	3E 2E 5
C&S	AH	-	290	Yes	②	180B*	373	2E 4

Notes: ① 50 to Willem from the company Bond
 ② 50 to Alan from the company Bond

Cash Flow	b/f	OR16	OR17	c/f	Value	%	Certs
Alan Harvey	949	155	376	1,480	3,640	50.2*	7
Willem Moene	861	85	424	1,370	3,610	49.8*	7

Portfolio	PCs	C&S	D&RGW
Alan Harvey	C&S Bond	7P	3
Willem Moene	D&RGW Bond	3	7P

Bank (new)	-	-
Bank (pool)	-	-
Price	180B	200A
Company credit	373	0
Tokens	1	1
Trains	2E 4	3E 2E 5
Bank cash: 497	Certificate limit: 7	Trains: 1 x '2+2E'

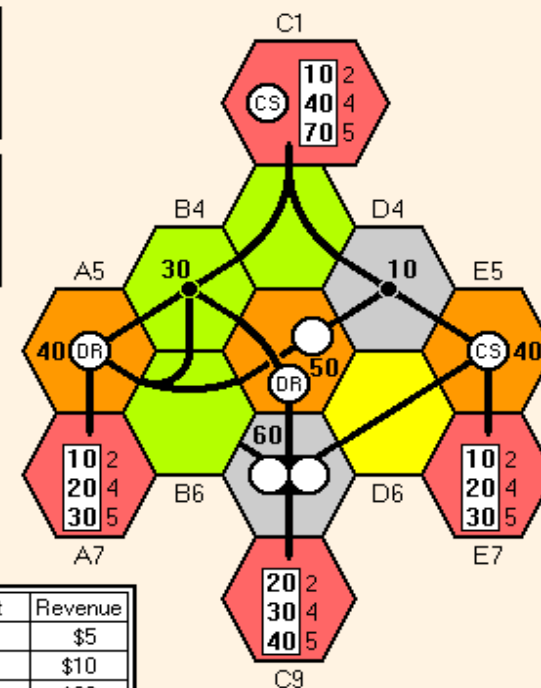
Tiles	Tile number/Availability				Three Operating Rounds between Stock Rounds									
Yellow	3/1	4/2	5/2	6/2	7/1	8/2	9/2	58/2						
Green	12/2	16/1	18/1	19/1	23/1	24/1	25/-	26/1	27/1	28/1	29/-	59/1		
	800/-	802/1												
Brown	39/1	40/1	42/1	43/1	45/1	46/1	64/1	65/1	66/1	67/-	68/1	70/1		
	803/1	804/-												
Grey	805/-	806/-	807/1	808/1										

I'm not expecting any deals in the final stock round, so I've asked for that and the following operating round, which will be the last.

1800

Game 120

Referee:
Keith Thomasson

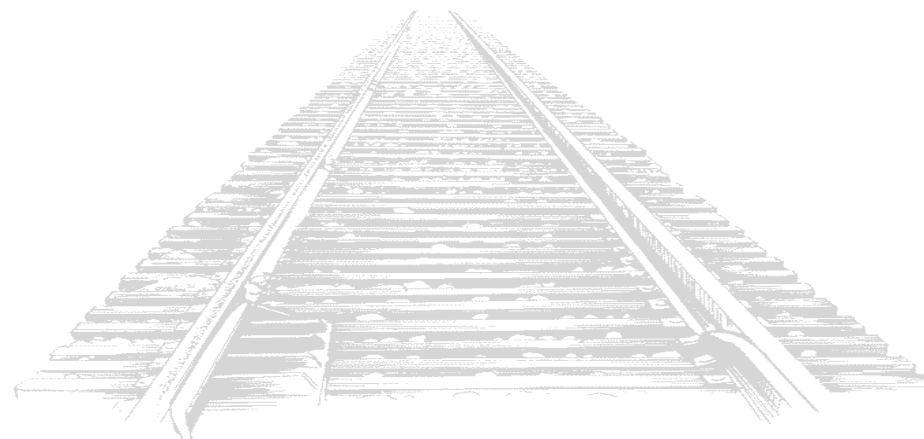


© Keith Thomasson 2007

Orders required for the following rounds

By the early deadline

SR12, OR18





1825-L21

Waiting for a '5' train...

OR11 - OR12

OR11	Pres	Lay	Run	Pay	Notes	Price	Credit	Trains
Cal	AH	24:J12:6	-	260	Yes ①	100▲	50	4 3 2 2
NBR	MH	-	-	300	Yes	205▲	0	3 3 2 2
GSWR	MH	-	-	70	No	49▼	260	2
GNoS	MH	9:C9:3	-	130	Yes ②	160▲	246	5
M&C	AH	24:J8:3	-	80	Yes	126▲	302	3T
High	MH	19:C9:5	-	60	Yes	100▲	130	U3

Notes: ① 100 to the bank for a token in J14

② 100 to the bank for terrain costs

OR12	Pres	Lay	Run	Pay	Notes	Price	Credit	Trains
Cal	AH	1:I13:2	-	260	Yes	126▲	50	4 3 2 2
NBR	MH	-	-	300	Yes	230▲	0	3 3 2 2
GSWR	MH	-	-	70	No	42▼	330	2
GNoS	MH	3:C7:2	-	130	Yes ①	180▲	146	5
M&C	AH	-	-	80	Yes	142▲	302	3T
High	MH	-	-	70	Yes	112▲	130	U3

Notes: ① 100 to the bank for terrain costs

Cash Flow	b/f	OR11	OR12	c/f	Value	%	Certs
Mike Hutton	13	355	361	729	4,457	55.4▼	16
Alan Harvey	5	372	372	749	3,593	44.6▲	17

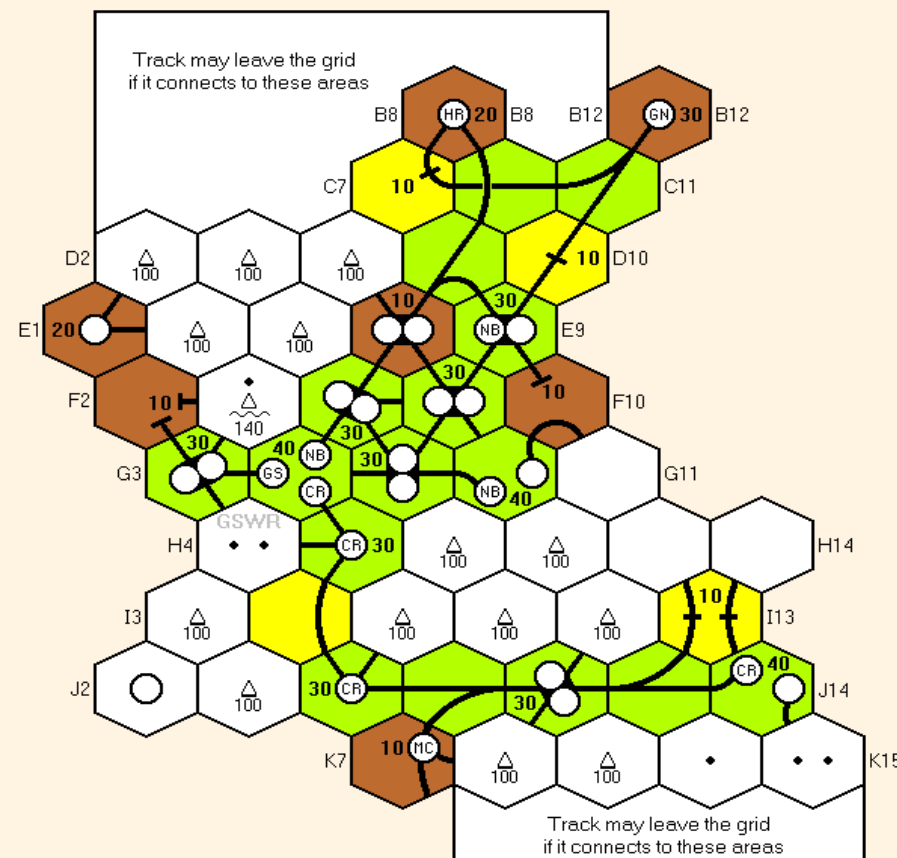
Portfolio	Privates	Cal	NBR	GSWR	GNoS	M&C	High
Mike Hutton	A&F	1	7D	5D	6D	-	6D
Alan Harvey	-	9D	3	4	-	6D	-
Bank (new)	-	-	-	-	2	4	4
Price (new)	-	76	76	67	112	112	90
Bank (pool)	TWW S&D	-	-	-	2	-	-
Price (pool)	-	126	230	42	180	142	112
Company credit	-	50	0	330	146	302	130
Tokens	-	-	1	2	-	-	-
Trains	-	4 3 2 2	3 3 2 2	2	5	3T	U3
Bank cash: 2,522	Certificate limit: 17				Trains: 2 x '5', 2 x '3T'...		

Tiles	Tile number/Availability										Two Operating Rounds between Stock Rounds		
Yellow	1/-	2/1	3/1	4/2	5/2	6/2	7/3	8/5	9/5	55/1	56/1	115/1	
Green	12/-	13/1	14/-	15/-	16/1	19/-	23/2	24/1	26/-	27/1	28/1	29/1	
	52/-	81/1											

1825 Unit 3

Game L21

Referee:
Keith Thomasson

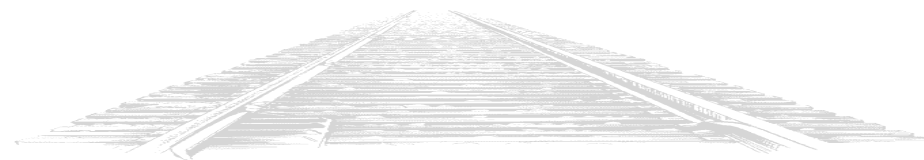


© Keith Thomasson 2007

Orders required for the following round

By the early deadline

SR8





1826-E22

The Etat gets a chance to form
but, as usual, fails to do so.

OR6

I looked up the wrong figures for the flotation of the M, O and E - they only get 225 when floating as a five-share company. The B, on the other hand, should have had 600.

OR6	Pres	Lays	Run	Pay	Notes	Price	Credit	Loans	Trains
PO	SW	14:17:2	-	130	Yes ① ② ③	122D▲	59	-	4H 4H
A	JS	57:E15:1	-	120	No ① ④	100D▼	150	-	4H
P	TF	141:E7:3	-	130	Yes ①	110C▲	145	-	-
N	DS	-	-	70	Yes ⑤	90B▲	110	-	4H
GC	TF	9:M15:1	-	70	Yes ⑥ ④	82C▲	54	-	4H
B	SW	6:B12:4	4:B10:3	-	- ⑥ ⑦ ④	70E▼	340	-	4H
M	LG	8:L4:5	9:K3:1	-	- ④	70E▼	25	-	4H
O	LG	8:G7:3	6:H6:6	-	- ⑧ ⑨	65E▼	425	1	6H
E	LG	8:G11:4	9:H12:1	-	- ⑧ ⑩	65E▼	425	1	6H

- Notes: ① Converts to a ten-share company
 ② 400 to the bank for two '4H' trains
 ③ 244 from the bank for the sale of 2 shares
 ④ 200 to the bank for a '4H' train
 ⑤ 40 to the bank for a token in F12
 ⑥ 40 to the bank for terrain costs
 ⑦ 20 to the bank for a token in B12
 ⑧ Loan acquired (▼65E)
 ⑨ 300 to the bank for a '6H' train - the Etat does not form
 ⑩ 300 to the bank for a '6H' train

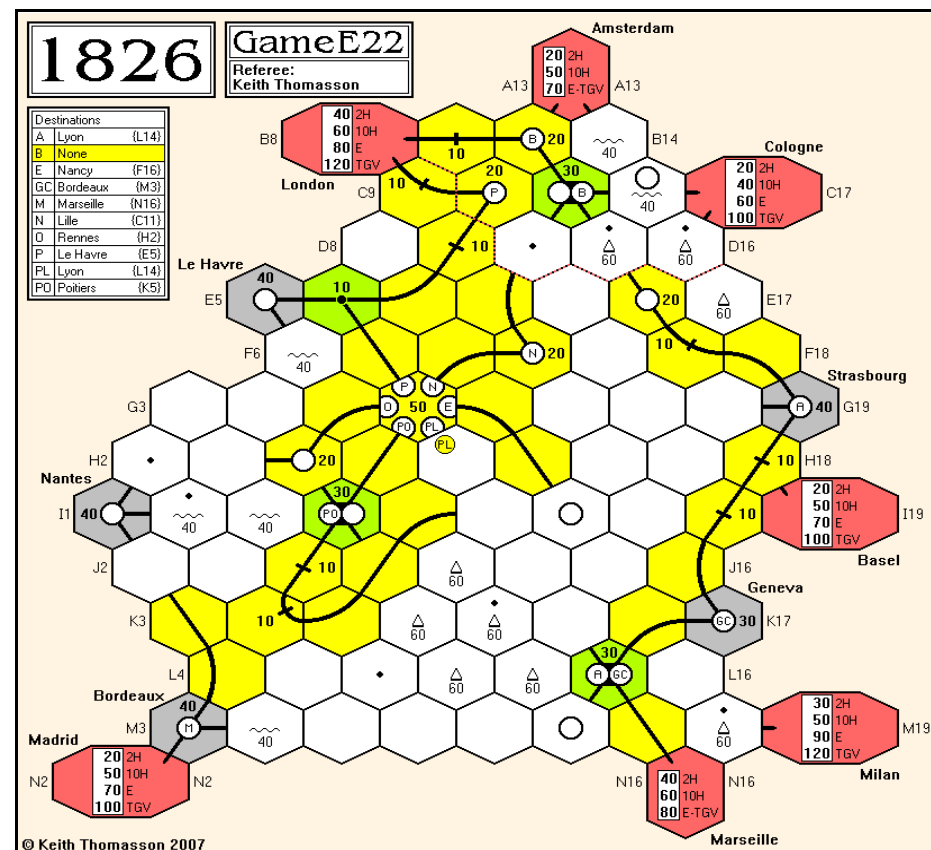
Cash Flow	b/f	OR6	c/f	Value	%	Certs
John Shelley	13	60	73	769	20.3▲	7
Lyndon Gurr	59	30	89	799	21.1▼	8
Don Smith	69	57	126	606	16.0▲	5
Stephen Webb	1	53	54	860	22.7▲	7
Tim Franklin	100	81	181	757	19.9▲	4

Portfolio	Privates	A	B	E	GC	M	N	O	P	PL	PO
John Shelley	Bridge	3P	-	-	2	-	1	-	-	-	1
Lyndon Gurr	Mail	-	1	3P	-	3P	-	3P	-	-	-
Don Smith	Alg	-	2	-	-	-	3P	-	-	-	-
Stephen Webb	-	-	5P	-	-	-	1	-	-	-	3P
Tim Franklin	-	-	-	-	3P	-	-	-	3P	-	-

Company type	10	10	5	5	5	5	5	10	-	10
Bank (new)	-	-	5	5	5	5	5	-	10	-
Bank (pool)	2	-	-	-	-	-	-	2	-	3
Treasury shares	5	2	2	-	2	-	2	5	-	3
Price	100D	70E	65E	82C	70E	90B	65E	110C	122D	
Company credit	150	340	425	54	25	110	425	145	303	
Loans	-	-	1	-	-	-	1	-	-	
Tokens	1	2	1	1	1	1	1	1	1	
Trains	4	4	6	4	4	4	6	-	4 4	
Bank cash: 9,500	Certificate limit: 13									
Current operating order:	PO, P, A, N, GC, B, M, O, E									

Tiles	Tile number/Availability										Two Operating Rounds between Stock Rounds									
Yellow	3/1	4/1	5/1	6/-	7/4	8/5	9/15	57/4	58/4											
Green	14/2	15/3	16/1	19/1	20/1	23/5	24/5	25/3	26/1	27/1	28/1	29/1								
	87/2	88/2	141/-	142/1	143/1	203/1	204/2	514/1	619/3											

The N ordered tile lays to the north of the Belgian border, but as the B had not operated, they could not be carried out. Now that the B has operated, Belgium is open for tile lays and upgrades.





1829-C20

SR13

Stock Round 13

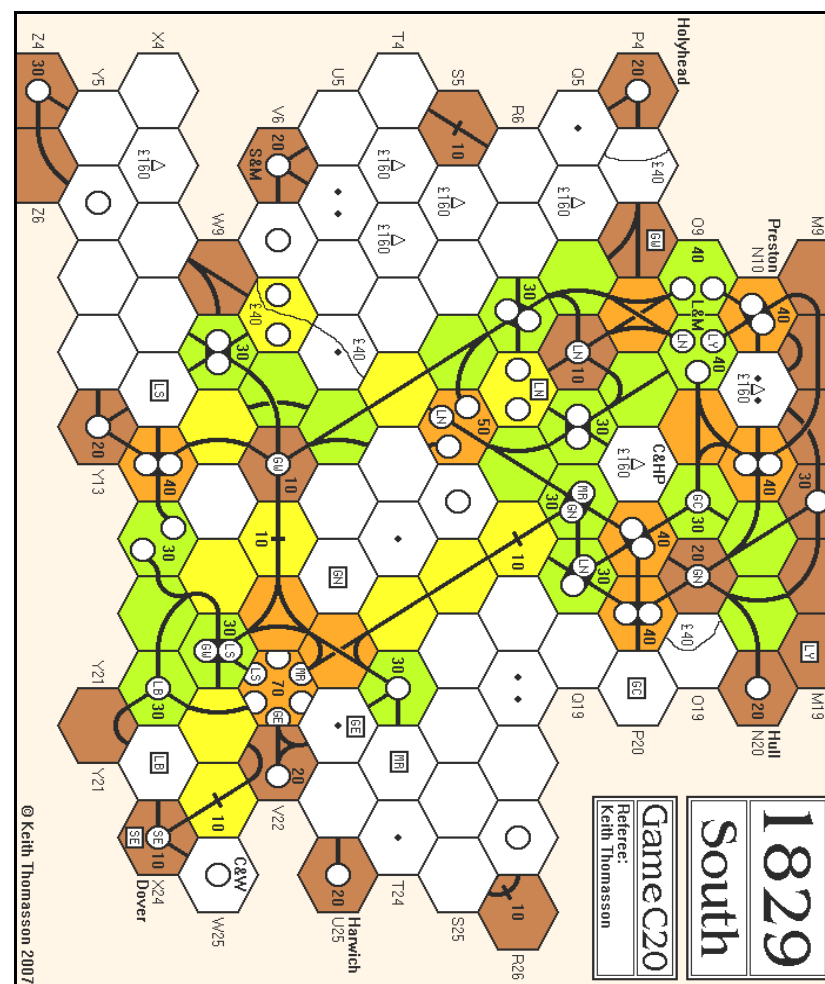
Peter	Don	Martin	David
+ LNWR pool	+ L&YR pool	✗	+ SECR pool
+ GWR pool	- 1 GER	✗	+ SECR pool (gains Dir)
+ L&YR pool (Dir to David)	+ L&YR pool (gains Dir)	✗	+ SECR pool
+ L&YR pool	✗	✗	+ SECR pool
✗	✗	✗	+ SECR pool
✗	✗	✗	+ SECR new [x4]
✗	✗	✗	+ LBSC pool [x10] (gains Dir)
✗	✗	✗	- 1 L&YR + Preston SP
✗	✗	✗	✗
Priority for SR14			

Cash Flow	b/f	SR13	c/f	Value	%	Certs
David Smith	1,581	-1085	496	4,345	31.4	18/36
Peter Berlin	646	-456	190	2,661	19.3	17
Don Shailer	619	2	621	2,955	21.4	17
Martin Butcher	392	0	392	3,855	27.9	18

Portfolio	Privates	LNWR	GWR	Mid	LSWR	GWR	LBSC	GER	GCR	L&YR	SECR
David Smith	Preston	-	1	4	2	8D	10D	2	-	1	10D
⚡ Peter Berlin	L&M	3	1	6D	-	1	-	-	5D	2	-
Don Shailer	C&HP	7D	2	-	-	1	-	-	5	3D	-
Martin Butcher	Hull	-	6D	-	8D	-	-	6D	-	-	-

Bank (new)	Holyhead...	-	-	-	-	-	-	-	-	-	-
Price (new)		100	90	82	76	71	67	64	61	58	56
Bank (pool)	C&W	-	-	-	-	-	-	2	-	4	-
Price (pool)		180	200	160	200	180	29	58	61	38	29
Company credit		210	560	320	10	310	100	0	20	230	0
Tokens		2	4	3	4	3	3	3	4	3	3
Trains		5	3	4	5	3	4	3	4	3	3
Bank cash: 18,301		Certificate limit: 18				Trains: 2 x '5', 4 x '7'					

Tiles	Tile number/Availability				Three Operating Rounds between Stock Rounds							
Yellow	1/2	2/2	3/2	4/3	5/4	6/4	7/3	8/6	9/7			
Green	10/2	12/2	13/1	14/-	15/-	16/-	17/1	18/1	19/2	20/2	21/1	22/1
	23/3	24/1	25/1	26/2	27/1	28/-	29/1	30/1	31/-			
Brown	32/-	33/1	34/-	35/1	36/1	37/1	38/1	39/1	40/-	41/2	42/1	43/1
	44/-	45/1	46/1	47/1								



Orders required for the following rounds

By the early deadline

OR18, OR19

Adjudication can pause between rounds if requested



1829-V21

We get one more company in this round.

SR9

Stock Round 9

Lionel	Peter	John	Mike	Rob
- 1 NER	+ Mid pool	+ Mid pool	- 2 LNWR	+ Cal new
+ NER pool			+ Cal new	
+ Mid pool	+ Mid pool	✗	+ Cal new	+ Cal new
✗	- 2 NER	✗	+ L&YR/Dir	+ NER pool
	+ Mid pool			
✗	+ L&YR new	✗	+ L&YR new	✗
✗	+ L&YR new	✗	+ L&YR new (floated)	✗
✗		✗	+ L&YR new	✗
✗	✗	✗	+ NER pool	✗
✗	✗	✗	+ NER pool	✗
✗	✗	✗		✗

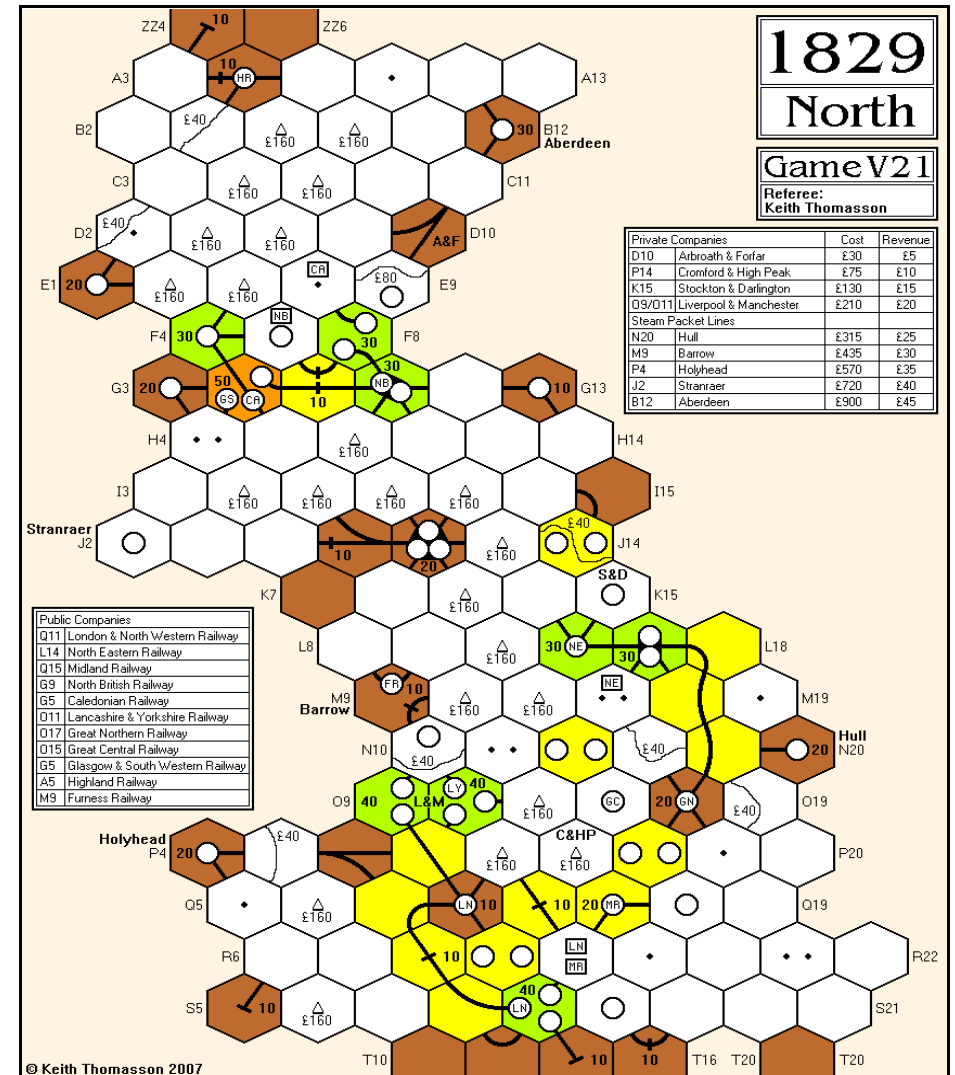
Priority for SR10:

Cash Flow	b/f	SR9	c/f	Value	%	Certs
Rob Thomasson	242	-224	18	908	18.7▼	11
Lionel Robbins	69	-67	2	681	14.1▲	9
Peter Berlin	186	-171	15	1,325	27.4▲	9
John Hopkins	122	-67	55	745	15.4▲	6
Mike Hutton	192	-191	1	1,181	24.4▼	14

Portfolio	Privates	LNWR	NER	Mid	NBR	Cal	L&YR	GNR	GCR	GSW	High	Furn
Rob Thomasson	A&F	-	1	-	8D	2	-	-	-	-	-	-
Lionel Robbins	-	-	1	1	2	6D	-	-	-	-	-	-
Peter Berlin	C&HP	4D	-	3	-	-	2	-	-	-	-	-
John Hopkins	S&D	1	-	5D	-	-	-	-	-	-	-	-
Mike Hutton	-	-	8D	1	-	2	5D	-	-	-	-	-

Bank (new)	Hull...	-	-	-	-	3	10P	10P	10P	10P	10P	10P
Price (new)		100	90	82	76	71	67	64	61	58	56	53
Bank (pool)	L&M	5	-	-	-	-	-	-	-	-	-	-
Price (pool)		225	82	67	82	61	67					
Company credit		80	120	340	160	60	670					
Tokens		4	4	4	3	3	4	4	4	3	3	3
Trains		3222	322	32	32	43						
Bank cash:	19,909	Certificate limit: 18					Trains: 3 x '4', 3 x '3T', 3 x '5'					

Tiles	Tile number/Availability											Two Operating Rounds between Stock Rounds
Yellow	1/2	2/1	3/2	4/4	5/4	6/3	7/2	8/5	9/9			
Green	10/2	12/1	13/3	14/3	15/2	16/1	17/1	18/1	19/2	20/2	21/1	22/1
	23/4	24/4	25/2	26/2	27/2	28/1	29/1	30/1	31/1			



Orders required for the following rounds

By the early deadline

OR10, OR11

Adjudication can pause between rounds if requested



1830-F21

Preparing for Willem's bankruptcy.

SR7 - OR10

Stock Round 7

Mike	Mark	Willem	Don	Tony
- 1 B&M (▼125C)	- 1 B&M (▼110D)	- 1 B&M (▼100E)	✗	+ NYC new
- 1 B&O (▼82C)	+ NYC pool			
- 1 C&O (▼90E)				
- 1 Erie (▼75F)				
- 5 NYC (▼70G)				
(Pres to Tony)				
- 1 PRR (↔)				
- 1 NYC (↔)	+ NYC pool	- 1 B&M (↔)	✗	+ Erie new
✗	+ NYC pool	✗	✗	+ PRR pool
✗	✗	✗	✗	✗
Priority for SR8				

OR10 Pres	Lay	Run	Pay	Notes	Price	Credit	Trains
B&M WM	-	-	-	①	90E	503	-

Notes: ① Willem sells 1 B&O (▼76D), 1 C&O (▼80F) and 1 NYNH (▼20I) and gives the B&M 502, and consequently goes bankrupt

Cash Flow	b/f	SR7	OR10	c/f	Value	%	Certs
Mark Stretch	428	-85	0	343	1,503	30.7▲	13/17
Willem Moene	90	210	-300	0	350	7.1▼	2/5
Don Smith	57	0	0	57	741	15.1▲	7
Tony Salt	228	-223	0	5	1,000	20.4▲	11/12
Mike Head	252	1,054	0	1,306	1,306	26.7▲	0

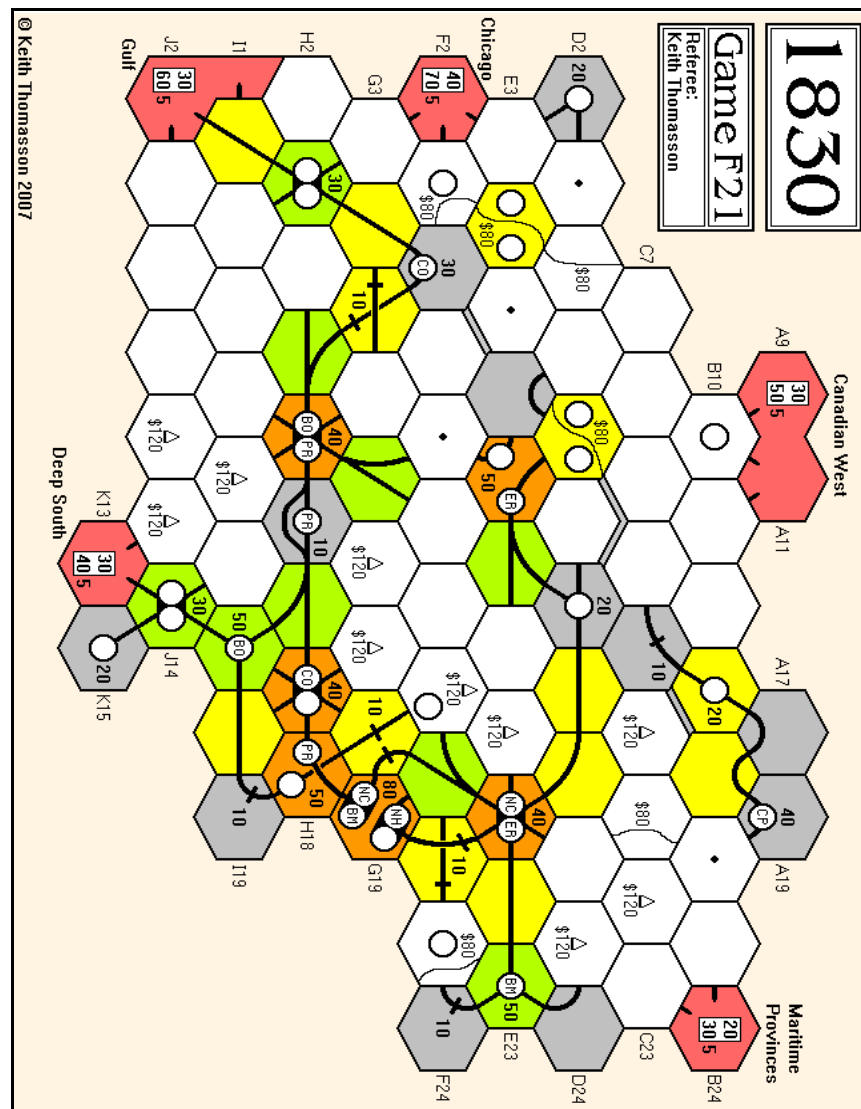
Portfolio	B&M	B&O	C&O	CPR	Erie	NYC	NYNH	PRR
Mark Stretch	-	-	-	-	6P	3	4	6P
Willem Moene	3P	-	-	-	-	-	4P	-
Don Smith	-	5P	-	4P	-	-	-	-
Tony Salt	-	-	6P	-	1	3P	1	3
Mike Head	-	-	-	-	-	-	-	-

Bank (new)	2	3	-	3	2	1	-	-
Price (new)	100	100	67	100	71	82	67	67
Bank (pool)	5	2	4	3	1	3	1	1
Price (pool)	90E	76D	80F	76D	75F	70G	20I	70G
Company credit	1	1	0	70	30	45	0	43
Tokens	-	1	1	3	1	2	1	1
Trains	-	5	6	D	5	6	D	5
Bank cash: 9,597	Certificate limit: 13						Trains: Diesels	

Mike decided to sell out of everything, but he wasn't able to depress Mark's value enough in the process, so while he retains second he has no chance of denting Mark's lead.

1st	Mark Stretch	1,503	30.7%
2nd	Mike Head	1,306	26.7%
3rd	Tony Salt	1,000	20.4%
4th	Don Smith	741	15.1%
5th	Willem Moene	350	7.1%

Round up time next month, so if you have something to say, please feel free.





1830-L23

Not all as planned.

PRIVATES

Stock Round 1, Private Companies

John	Buys the SVR for 20
Mike	Bids 165 on the C&A
Richard	Bids 170 on the C&A
Tim	Bids 175 on the C&A
Willem	Bids 115 on the M&H
John	Buys the C&StL for 40
Mike	✗
Richard	Buys the D&H for 70
	⊕ Willem gets the M&H for 115
	⊕ Richard gets the C&A for 210 with a free PRR share
Tim	Buys the B&O for 220, sets par at 100
	<i>Priority for the second part of this round lies with Willem</i>

Cash Flow	b/f	Privates	c/f	Value	%	Certs
John Shelley	480	-60	420	480	18.9▼	2
Mike Head	480	0	480	480	18.9▼	-
Richard Lunn	480	-280	200	430	16.9▼	2/3
Tim Franklin	480	-220	260	680	26.7▲	2
Willem Moene	480	-115	365	475	18.6▼	1

Portfolio	PCs	B&M	B&O	C&O	CPR	Erie	NYC	NYNH	PRR
John Shelley	SVR, C&StL	-	-	-	-	-	-	-	-
Mike Head	-	-	-	-	-	-	-	-	-
Richard Lunn	D&H, C&A	-	-	-	-	-	-	-	1
Tim Franklin	B&O	-	2P	-	-	-	-	-	-
Willem Moene	M&H	-	-	-	-	-	-	-	-

Bank (new)	10P	8	10P	10P	10P	10P	10P	9
Price (par)	100							
Bank (pool)	-	-	-	-	-	-	-	-
Price (pool)	100A							

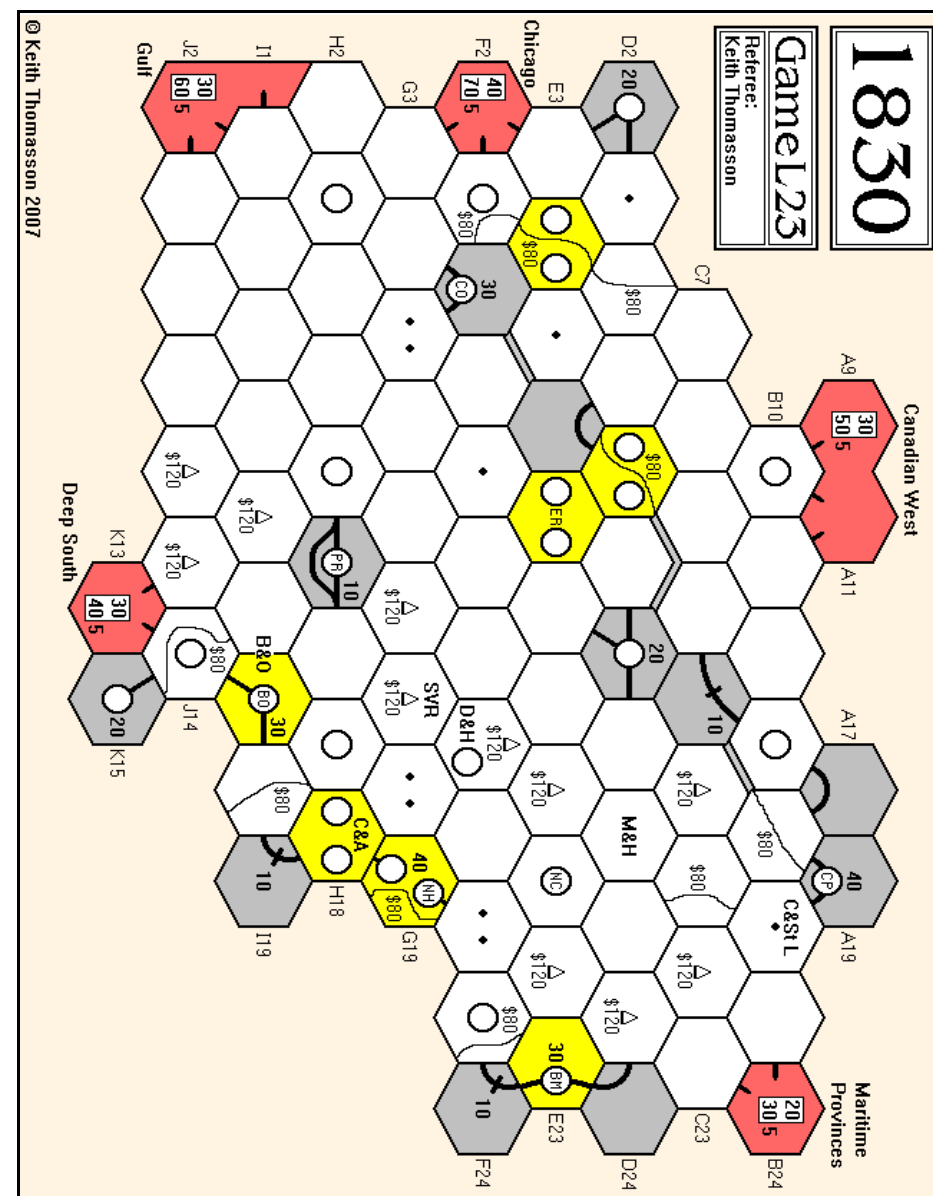
Company credit

Trains

Redeemed shares

Bank cash: 10,275	Certificate limit: 13	Trains: 6 x '2', 5 x '3'...
-------------------	-----------------------	-----------------------------

Tiles	Tile number/Availability					One Operating Round between Stock Rounds						
Yellow	1/1	2/1	3/2	4/2	7/5	8/8	9/7	55/1	56/1	57/4	69/1	



Orders required for the following round

By the early deadline

SR1, Public Companies



1835-B21

Tony is gifted the train-less
SxE for the end of the game.

OR14 - SR10

I read a 30 value station as 40 for the MsE runs last time, so 10 has been removed for each OR. Strangely, I did exactly the same for the BaE in OR13, but on a different station. 10 has been removed for that error.

OR14	Pres	Lay	Run	Pay	Notes	Price	Credit	Trains
PrE	MS	-	460	Yes	-	320C▲	280	6 5
ByE	JS	9:O11:2	430	Yes	①	290C▲	169	5+5
SxE	MS	-	200	Yes	-	154D▲	413	-
WtE	JS	218:L14:2	170	Yes	②	114E▲	1	4
HeE	TS	8:J10:4	310	Yes	-	110C▲	30	6
BaE	WM	202:H3:1	360	Yes	③	110C▲	0	4+4 4
MsE	DS	63:H16:1	200	No	④	92F▼	1	5 4
OIE	DS	43:F8:6	-	-	⑤	86E▼	29	6+6

- Notes: ① 120 to the bank for a token in J8
 ② 142 to the ByE for a '3+3' train
 ③ 50 to the bank for terrain costs
 ④ 589 to the OIE for a '5' train
 ⑤ 720 to the bank for a '6+6' train

Stock Round 10

Willem	Mark	Tony	Don	John
✗	- 6 SxE {▼140E} (Tony gains Dir) + WtE new {20%}	- 1 HeE {▼102D} + MsE pool	✗	✗
✗	+ HeE pool	+ MsE pool	✗	✗
✗	+ OIE new	✗	✗	✗
✗	✗	Priority for SR11		

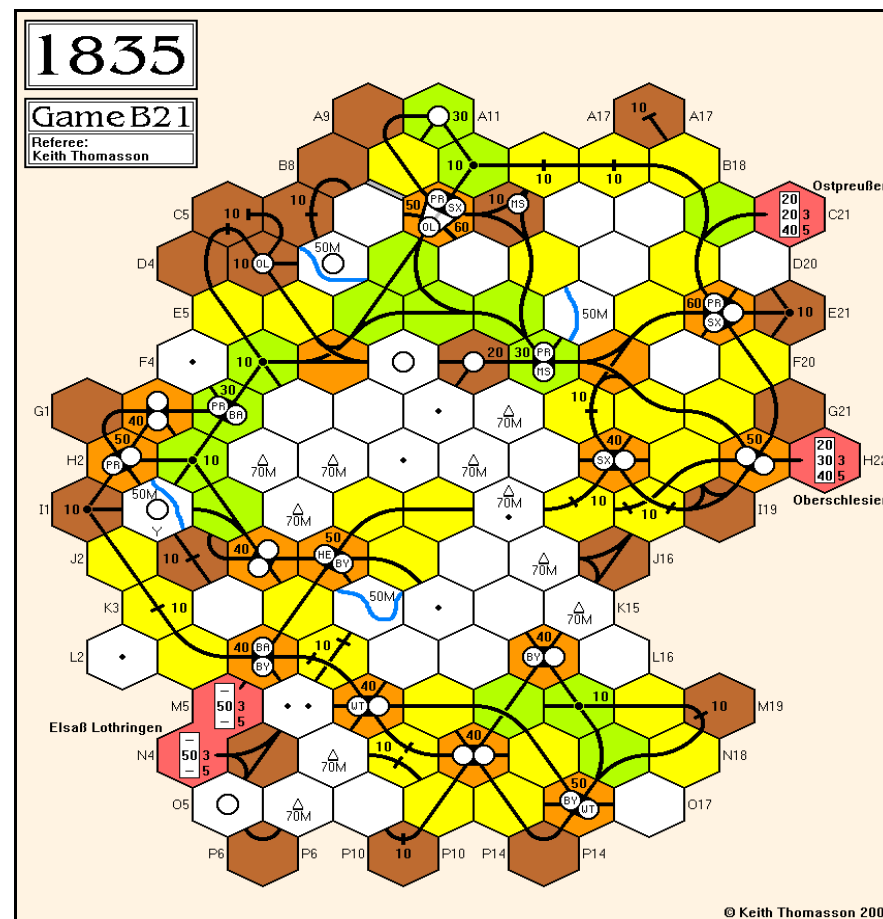
Cash Flow	b/f	OR14	SR10	c/f	Value	%	Certs	Limit
Willem Moene	1,082	532	0	1,614	4,400	21.8▲	13	13
Mark Stretch	816	367	574	1,757	4,077	20.2▲	11	12
Tony Sait	1,006	445	-96	1,355	3,436	17.0▲	13	13
Don Smith	862	69	0	913	2,918	14.4▼	13	13
John Shelley	1,470	466	0	1,936	5,364	26.6▲	13	13

Portfolio	PrE	ByE	SxE	BaE	WtE	HeE	MsE	OIE
Willem Moene	30/3	20/2	10/1	80/7	-	-	-	-
Mark Stretch	50/6	-	-	-	30/2	10/1	-	10/1
✗ Tony Sait	5/1	-	20/1	20/1	10/1	90/7	10/1	20/1
Don Smith	15/2	-	-	-	-	-	90/6	70/5
John Shelley	-	80/7	10/1	-	60/5	-	-	-

Bank (new)	-	-	-	-	-	-	-	-
Price (new)	154	92	88	84	84	84	80	80
Bank (pool)	-	-	60/5	-	-	-	-	-
Price (pool)	350B	318B	140E	120B	124D	110C	96E	88D
Company credit	280	169	413	0	169	30	1	109
Tokens	1	1	-	-	-	1	-	1
Trains	6 5	5+5	-	4+4 4	4	6	5 4	6+6

Bank cash: 3,254 Trains: 3 x '6+6'
 Current operating order: PrE, ByE, SxE, WtE, BaE, HeE, MsE, OIE

Tiles	Tile number/Availability												Three Operating Rounds between Stock Rounds		
Yellow	1/-	2/1	3/2	4/-	5/3	6/3	7/8	8/5	9/-	55/1	56/-	57/2			
	58/2	69/1	201/2	202/2											
Green	12/1	13/2	14/2	15/-	16/2	18/1	19/1	20/2	23/1	24/1	25/-	26/2			
	27/2	28/2	29/2	87/2	88/1	203/1	204/-	205/1	206/1	207/2	208/2	209/1			
	210/1	211/1	212/1	213/1	214/1	215/1									
Brown	39/1	40/1	41/2	42/2	43/-	44/2	45/1	46/2	47/2	63/-	70/1	216/-			
	217/1	218/-	219/1	220/-	221/-										



Orders required for the following rounds

By the early deadline

OR15, OR16, OR17



1850-R22

We double the number of operating companies.

OR4 - SR5

OR4	Pres	Lays	Run	Pay	Notes	Price	Credit	Trains
NP	SW	8:B3:1	-	110	Half	110B*	391	2 2 2
UP	TF	9:H3:1	-	30	Yes	100B*	620	2 2

Notes: ① 40 to the bank for a token in B5

Stock Round 5

Stephen	Alan	Lyndon	Tim
NP redeems from Stephen	- 3 UP {v76E} - 2 NP {PP} + CBQ/Pres {100}	⇒	⇒
Price protects 2 NP	+ CBQ new	- 3 NP {v82E} + MKT/Pres {68}	✗
+ NP pool	+ CBQ new	+ MKT new	✗
+ UP pool	+ CBQ new	+ MKT new	✗
✗	+ CBQ new {floated}	+ MKT new	✗
✗	✗	+ MKT new {floated}	✗
✗	✗	✗	Priority for SR5

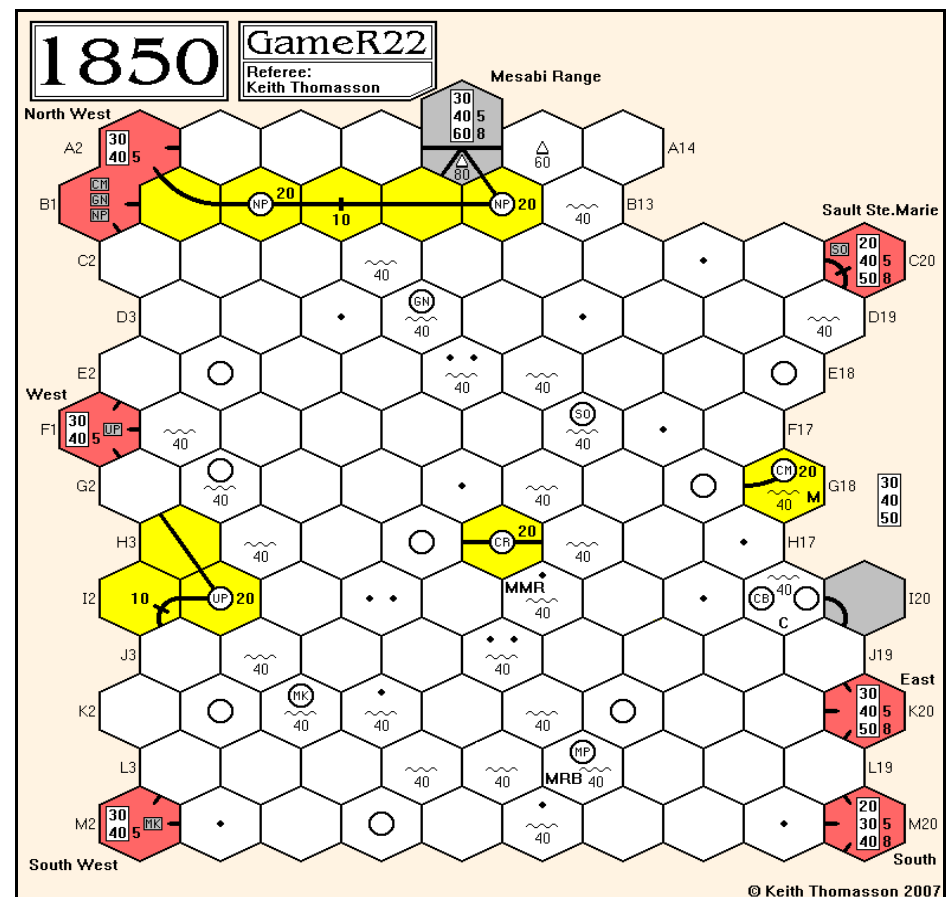
Cash Flow	b/f	OR4	SR5	c/f	Value	%	Certs
Stephen Webb	227	44	-268	3	671	23.5▼	8
Alan Harvey	130	51	-80	101	831	29.1▲	7
Lyndon Gurr	56	54	-78	32	792	27.8▲	9/10
Tim Franklin	105	25	0	130	560	19.6▼	5

Portfolio	Privates	CBQ	CMSP	CRIP	GN	MKT	MP	NP	SOO	UP
Stephen Webb	GRSC, MMC	-	-	-	-	-	-	6P	-	1
Alan Harvey	MRBC, WLGC	6P	-	-	-	-	-	-	-	-
Lyndon Gurr	CM, MMR	-	-	1	-	6P	-	-	-	2
✗ Tim Franklin	QBCC	-	-	-	-	-	-	-	-	5P

Bank (new)	4	10	9	10	4	10	-	10	-
Price (par)	100				68		68		82
Bank (pool)	-	-	-	-	-	-	2	-	2
Price (pool)	100A				68F		82E		76E
Company credit	1,000				680		281		620
Redeemed shares	-				-		2		-
Tokens	4	3+E	4	3+E	3+E	3	1+E	3+E	2+E
Trains	-				-		2 2 2		2 2
Bank cash: 9,153	Certificate limit: 13				Trains: 1 x '2', 6 x '3'...				
Current operating order:	CBQ, NP, UP, MKT								

I'll just make a comment here to pre-empt a potential challenge on the adjudication. If you want to buy a share in a newly floated company, but two get floated, then with no indication of which to buy, nothing gets bought. Preferences can be who the President is, which was started first, price, or specific companies, but no preference means no action.

Tiles	Tile number/Availability					One Operating Round between Stock Rounds						
Yellow	1/1	2/1	3/2	4/3	5/-	6/2	7/6	8/19	9/18	55/1	56/1	57/4
	58/4	69/1	128/1									



Orders required for the following rounds

By the early deadline

OR5, SR6

Adjudication can pause between rounds if requested



1856-D22

Lots of action and
two fresh companies.

SR5

Stock Round 5

John	Richard	Tony	Willem	Mike
+ LPS new	+ GT new - 4 GT {▼90F}	+ LPS new - 1 LPS {↔}	+ LPS new	- 1 GW {↔} - 1 LPS {↔} - 1 WR {▼70G} + THB/P {100}
+ CA new	+ CV/P {65}	+ CA new	+ GT new	+ GT new
✗	+ CV new	+ CA new	✗	- 1 GT {↔} + THB new
✗	+ CV new	✗	✗	+ THB new
✗	+ CPR new	✗	✗	✗
✗	+ GW new	✗	✗	✗
✗	+ WR new	✗	✗	✗
✗	+ CA new	✗	✗	✗
✗	+ CPR new	✗	✗	✗
✗	✗	✗	✗	✗
Priority for SR6				

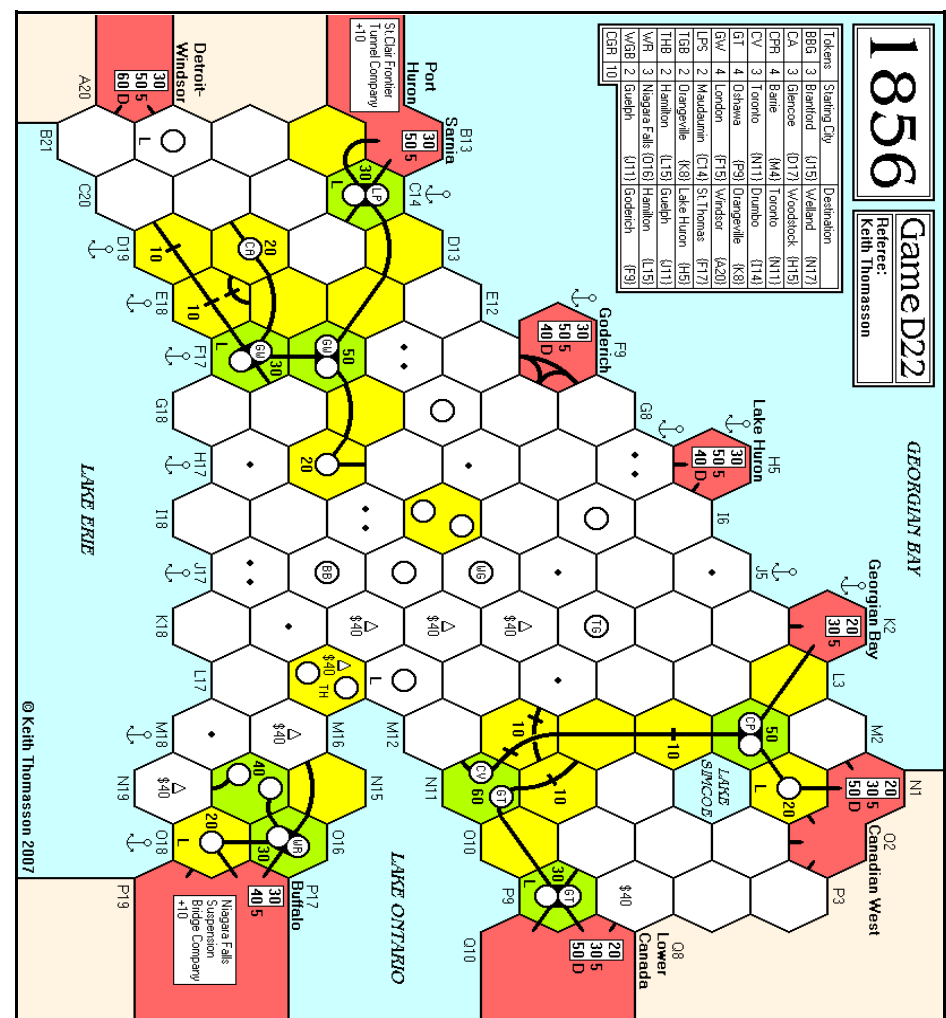
Cash Flow	b/f	SR5	c/f	Value	%	Certs
Richard Lunn	274	-245	29	924	21.7▲	10
Tony Robbins	186	-125	61	881	20.7▲	9
Willem Moene	206	-145	61	921	21.6▲	9
Mike Head	175	-145	30	780	18.3▼	7
John Shelley	169	-135	34	754	17.7▲	8

Portfolio	Privates	BBG	CA	CPR	CV	GT	GW	LPS	TGB	THB	WGB	WR
Richard Lunn	-	-	1	2	5P	2P	1	-	-	-	-	1
✗ Tony Robbins	-	-	6P	-	-	-	-	5P	-	-	-	-
Willem Moene	-	-	-	1	-	1	6P	1	-	-	-	1
Mike Head	-	-	-	-	-	-	-	-	-	4P	-	5P
John Shelley	-	-	1	6P	-	-	1	1	-	-	-	-

Bank (new)	10P	2	1	5	2	1	-	10P	6	10P	2
Price (par)		70	70	65	80	65	65		100		65
Bank (pool)	-	-	-	-	5	1	3	-	-	-	1
Price (pool)		70E	80E	65F	90F	90F	80F		100A		70G
Company credit		380	305	325	105	230	199		400		170
Tokens	3	2	3	3	2	2	1	2	2	2	2
Trains		4	4	3	-	3	3	4	3	-	3
Bank cash: 9,671	Certificate limit: 13						Trains: 1 x '4', 3 x '5'				
Current operating order: THB, GW, GT, LPS, CPR, WR, CA, CV											

Some intriguing orders this time, such as conditionals over whether a '4' train was available. As train don't change hands during stock rounds, you should have been able to work that one out :-)

Tiles	Tile number/Availability					Two Operating Rounds between Stock Rounds						
Yellow	1/1	2/-	3/3	4/1	5/-	6/1	7/6	8/9	9/9	55/1	56/-	57/3
	58/2	69/1										
Green	14/2	15/2	16/1	17/1	18/1	19/1	20/1	23/4	24/4	25/1	26/1	27/1
	28/1	29/1	59/1	120/-								



Orders required for the following rounds

By the early deadline

OR7, OR8

Adjudication can pause between rounds if requested



1856-M22

The CV is floated to make it six companies.

SR4

Stock Round 4

Willem	Mike	Lyndon	Tony	Rob
+ GT new	+ CPR new	+ GW new	+ CV/P {70}	+ GT new
+ LPS new	+ CPR new	+ GW new	+ CV new	+ CA new
+ CPR new	+ GW new	+ GW pool	- 1 LPS {+}	
			+ CV new	
✗	+ CA new	✗	+ CPR new	✗
✗	+ GT new			✗
✗	✗	Priority for SR5		

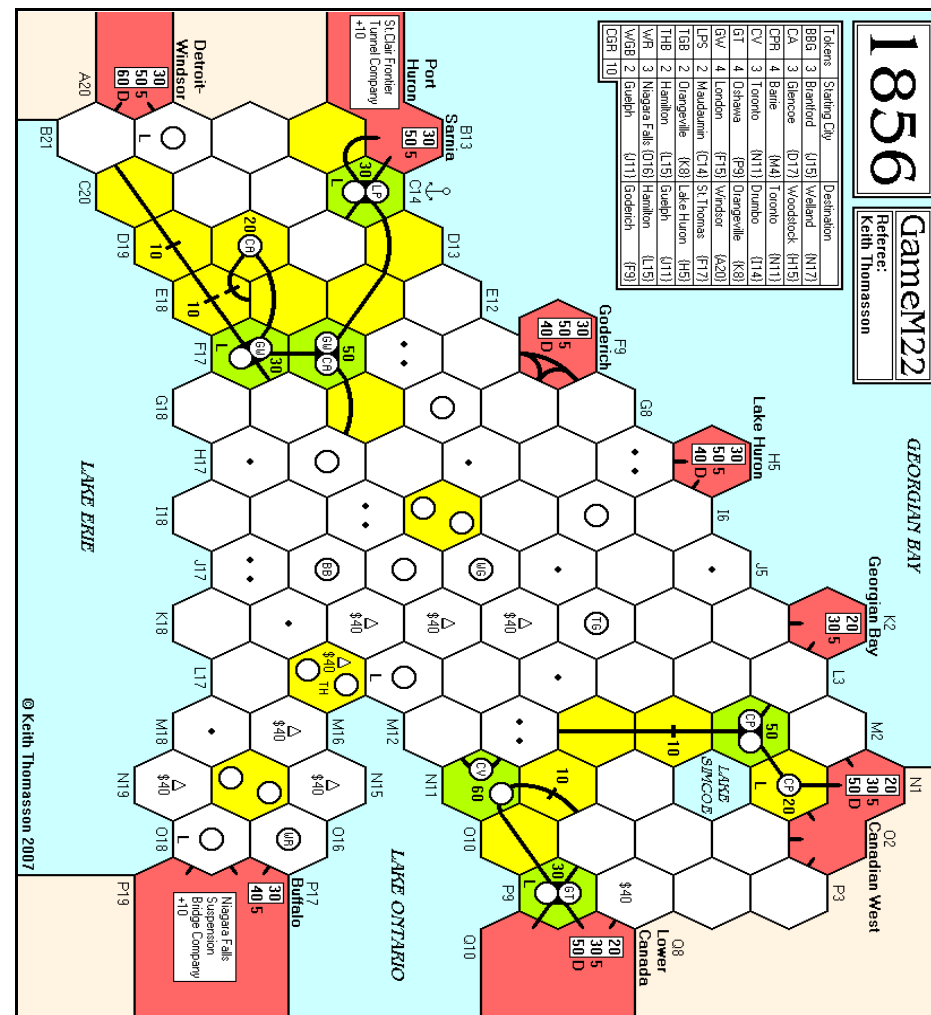
Cash Flow	b/f	SR4	c/f	Value	%	Certs
Mike Head	336	-325	11	586	18.1	8
Lyndon Gurr	251	-205	46	766	23.6	9
Tony Sait	274	-270	4	554	17.1	6
Rob Thomasson	165	-130	35	625	19.3	8
Willem Moene	228	-200	28	708	21.9	8

Portfolio	Privates	BBG	CA	CPR	CV	GT	GW	LPS	TGB	THB	WGB	WR
Mike Head	-	-	1	6P	-	1	1	-	-	-	-	-
Lyndon Gurr	-	-	2	-	-	5P	3	-	-	-	-	-
Tony Sait	-	-	-	1	4P	-	-	3P	-	-	-	-
Rob Thomasson	-	-	6P	1	-	2	-	-	-	-	-	-
Willem Moene	-	-	-	1	-	1	6P	1	-	-	-	-

Bank (new)	10	1	1	6	1	-	5	10	10	10	10
Price (par)		65	65	70	65	65	70				
Bank (pool)	-	-	-	-	-	-	1	-	-	-	-
Price (pool)		65G	60F	70E	70F	80E	70F				
Company credit		170	170	280	65	280	460				
Tokens	3	1	2	3	3	2	1	2	2	2	3
Trains		3	3	2	2	-	3	3	2	2	2

Bank cash: 10,451 Certificate limit: 13 Trains: 4 x 4, 3 x 5
Current operating order: GW, GT, LPS, CV, CA, CPR

Tiles	Tile number/Availability												Two Operating Rounds between Stock Rounds		
Yellow	1/1	2/-	3/3	4/1	5/1	6/1	7/6	8/10	9/9	55/1	56/1	57/4			
	58/2	69/1													
Green	14/2	15/3	16/1	17/1	18/1	19/1	20/1	23/4	24/4	25/1	26/1	27/1			
	28/1	29/1	59/2	120/-	121/-										



Orders required for the following rounds

By the early deadline

OR6, OR7

Adjudication can pause between rounds if requested



1861-B23

The remaining minors
can now be started up.

OR3 - OR4

OR3	Pres	Lay	Run	Pay	Notes	Price	Credit	Loans	Trains
N	GH	-	-	80	Half	80F▲	155	-	-
MK	MH	-	-	70	Half	80F▲	70	-	2
KB	WM	-	-	60	Half	80F▲	100	-	2
MNN	LG	9:K8:3	-	70	Half	65G▲	90	-	2
SPW	MS	-	-	70	Half	60H▲	80	-	2
RO	MS	8:D7:4	5:D9:1	50	Half	60H▲	35	-	2
KK	LG	-	-	-	②	50H▼	15	-	2
OK	WM	201:C20:1	-	-	②	50H▼	10	-	2
MV	MH	6:H13:6	-	-	②	50H▼	10	-	2
KR	GH	4:F13:1	-	50	Half	55H▲	0	-	2.2

- Notes: ① 20 to the bank for a second tile lay
② 100 to the bank for a '2' train
③ 25 to the N for a '2' train

OR4	Pres	Lay	Run	Pay	Notes	Price	Credit	Loans	Trains
N	GH	-	-	-	① ②	70F▼	20	2	3
MK	MH	87:G10:4	8:G12:1	70	Half	90F▲	85	-	2
KB	WM	-	-	70	Half	90F▲	45	-	2
MNN	LG	637:G8:2	-	80	Half	70G▲	130	-	2
SPW	MS	28:B7:1	-	70	Half	65H▲	115	-	2
RO	MS	207:A4:2	-	60	Half	65H▲	65	-	2
KR	GH	24:F11:2	-	130	Half	60H▲	65	-	2.2
KK	LG	635:C14:2	-	90	Half	55H▲	60	-	2
OK	WM	9:C18:1	9:C16:1	60	Half	55H▲	15	-	2
MV	MH	9:I12:2	-	70	Half	55H▲	45	-	2

- Notes: ① Takes out 2 loans
② 225 to the bank for a '3' train
③ 20 to the bank for a second tile lay
④ 90 to the Willem for the WVR private
⑤ Takes out 1 loan
⑥ Redeems 1 loan

Portfolio	Privates	KB	KK	KR	MK	MNN	MV	N	OK	RO	SPW
Willem Moene	-	1	-	-	-	-	-	-	1	-	-
Geoff Hardingham	-	-	-	1	-	-	-	1	-	-	-
Mike Hutton	MYR	-	-	-	1	-	1	-	-	-	-
Lyndon Gurr	BSSC, MRR	-	1	-	-	1	-	-	-	-	-
Mark Stretch	TSR	-	-	-	-	-	-	-	-	1	1

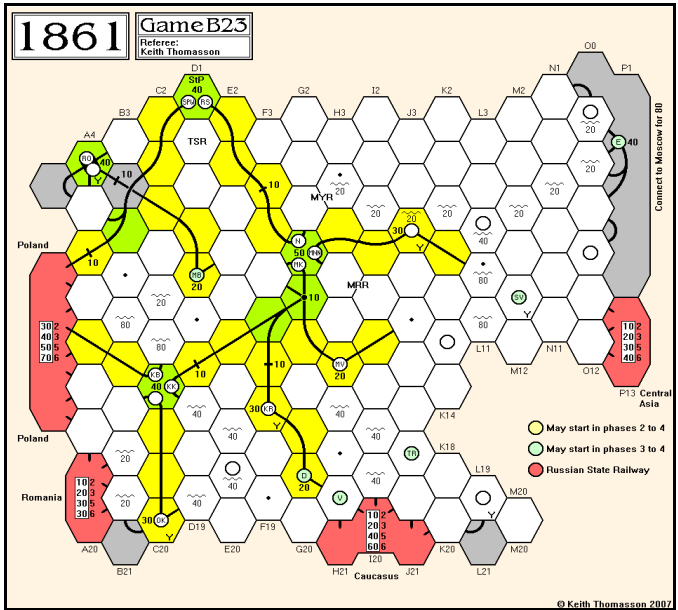
Bank (new)	-	-	-	-	-	-	-	-	-	-
Bank (pool)	-	-	-	-	-	-	-	-	-	-
Price	90F	55H	60H	90F	70G	55H	70F	55H	65H	65H
Loans	-	-	-	-	-	-	2	-	-	-
Company credit	130	60	65	85	130	45	20	15	65	115
Tokens	-	-	-	-	-	-	-	-	-	-
Trains	2	2	2.2	2	2	2	3	2	2	2
Bank cash: 13,350	Certificate limit: 13				Trains: 6 x '3', 4 x '4'...					
Current operating order:	MK, KB, MNN, N, SPW, RO, KR, KK, OK, MV									

Cash Flow	b/f	OR3	OR4	c/f	Value	%	Certs
Willem Moene	2	60	185	247	392	20.6▼	2
Geoff Hardingham	67	65	65	197	327	17.2▼	2
Mike Hutton	2	55	90	147	352	18.5▲	3
Lyndon Gurr	2	75	125	202	447	23.5▲	4
Mark Stretch	77	70	75	222	382	20.1▼	2

Tiles	Tile number/Availability					Two Operating Rounds between Stock Rounds						
Yellow	3/2	4/1	5/1	6/-	7/③	8/③	9/③	57/2	58/4	201/2	202/2	621/2
Green	14/2	15/2	16/2	17/2	18/2	19/2	20/2	21/2	22/2	23/5	24/4	25/4
	26/2	27/2	28/1	29/2	30/2	31/2	87/1	88/2	204/2	207/4	208/2	619/2
	622/2	624/1	625/1	626/1	635/-	637/-						

③ Yellow track tiles are unlimited

If you are willing to pay to lay a second tile, please state this explicitly. I hope I've done it right this time, but people may simply be listing two tiles as possible builds without intending to pay for having them in the same round. Note that if a loan would be required to pay for a second tile, I will not take the loan unless you have said you want to make this payment.



The only minor companies that can consider merging are the MK, KR, KK and MV. If you're going to do so, let me know very early and I'll notify everyone by e-mail. Otherwise, stock round options will be limited to the second tranche of minor companies.

Orders required for the following rounds	By the early deadline
MR1, SR3	



1870-O20

We could be heading for the last set of operating rounds.

SR8

The SP should have laid 58:M10:6 in OR13, which added 20 to the connection run and raised the OR14 run. Roger got paid for 7 SSW shares in the last two ORs. Adjustments have been made and the portfolio should be up to date this time..

Stock Round 8

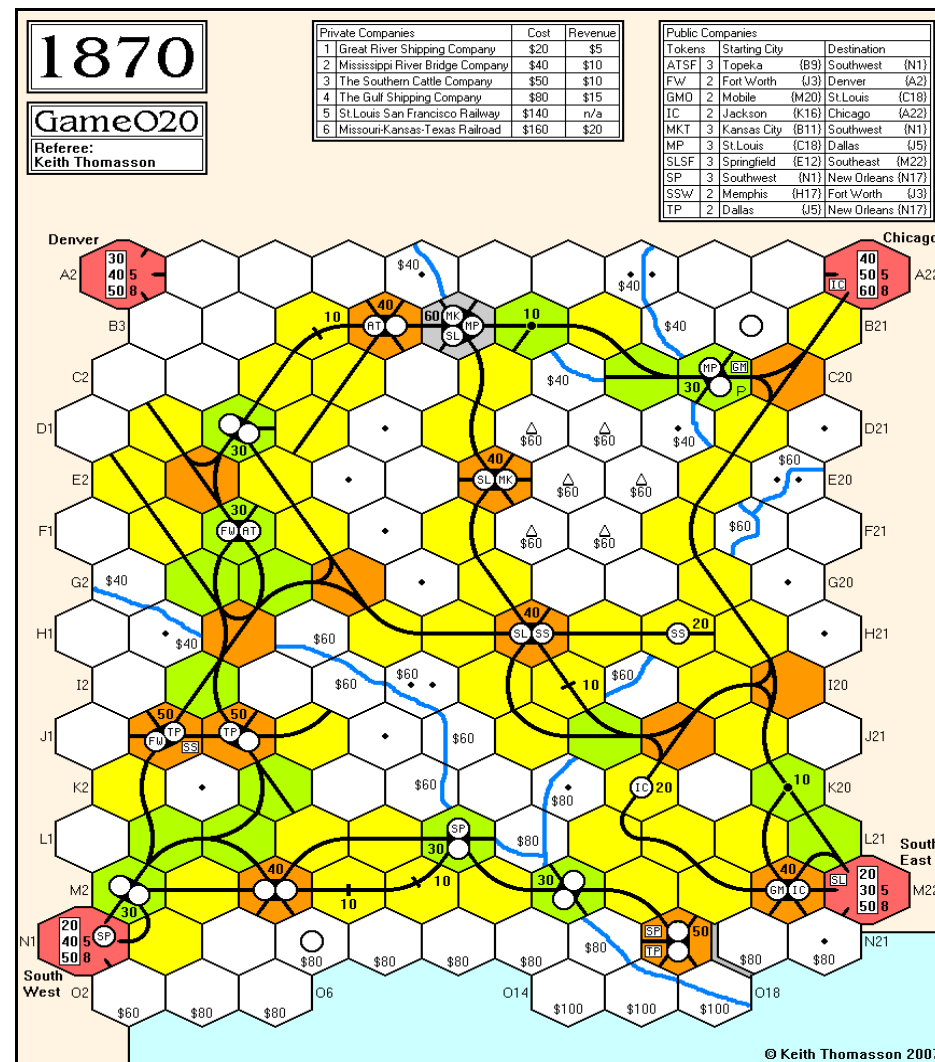
Simon	Don	Stephen	Willem	Roger
+ FW new	+ SP pool	+ FW new	+ GMO new	+ IC new
+ ATSF new	+ IC new	+ FW new	+ MKT pool	+ MP pool
+ MKT pool	+ MKT pool	- 2 SLSF (▼225D) + IC new	+ ATSF new	✗
✗	+ ATSF pool	+ ATSF new	+ MP new	✗
✗	✗	✗	✗	Priority for SR9

Cash Flow	b/f	SR8	c/f	Value	%	Certs
Simon Cutforth	550	-292	258	2,790	19.1▲	15/16
Don Smith	692	-472	220	1,812	12.4▲	12
Stephen Webb	1,167	198	1,365	3,999	27.4▲	16/18
Willem Moene	836	-384	452	2,863	19.6▼	10/15
Roger Krueger	1,284	-180	1,104	3,128	21.5▲	17/18

Portfolio	ATSF	FW	GMO	IC	MKT	MP	SLSF	SP	SSW	TP
Simon Cutforth	1	1	6P	6P	1	-	-	-	1	2
Don Smith	6P	-	-	1	6P	-	-	1	-	-
Stephen Webb	1	2	1	2	1	1	-	7P	1	3
Willem Moene	1	6P	1	-	1	1	7P	-	-	-
✶ Roger Krueger	-	1	1	1	-	5P	-	1	7P	5P

Bank (new)	1	-	-	-	-	1	-	-	-	-
Price (par)	82	90	82	90	76	100	100	72	90	100
Bank (pool)	-	-	1	-	1	-	2	-	-	-
Price (pool)	82F	64A	160C	180A	120D	90D	225D	200D	90C	68C
Company credit	670	600	22	72	0	192	80	55	167	573
Redeemed shares	-	-	-	-	-	2	1	1	2	-
Tokens	2+D	D	1	-	1+D	1+D	-	1	-	-
Trains	5	8	8	10	6	6	5	8	10.5	6.5
Bank cash: 6,170	Certificate limit: 13				Trains: '12's					
Current operating order:	SLSF, SP, IC, GMO, MKT, MP, SSW, ATSF, TP, FW									

Tiles	Tile number/Availability										Three Operating Rounds between Stock Rounds		
Yellow	1/1	2/1	3/3	4/4	5/2	6/2	7/7	8/4	9/7	55/1	56/1	57/3	
	58/3	69/1											
Green	14/3	15/1	16/2	17/2	18/2	19/2	20/2	23/-	24/3	25/-	26/2	27/1	
	28/2	29/2	141/1	142/1	143/1	144/1							
Brown	59/-	40/2	41/-	42/2	43/2	44/1	45/2	46/1	47/2	63/-	70/2	145/2	
	146/2	147/2	170/-										
Grey	171/-	172/1											

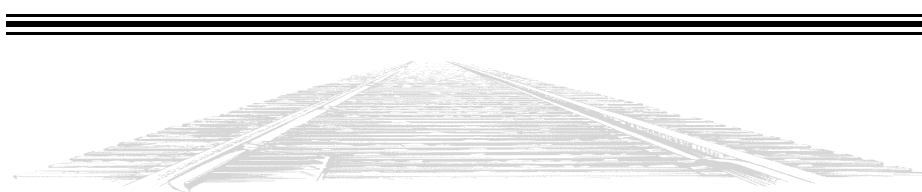


Orders required for the following rounds

By the early deadline

OR15, OR16

Adjudication can pause between rounds if requested





1870-K23

The MKT and the MP are floated.

PUBLICS

Stock Round 1, Public Companies

Don	Willem	John	Lionel	Lyndon
+ MKT/P {72}	+ SLSF new	x	+ MP/P {76}	+ MP new
+ MKT new	x	x	+ MP new	+ MP new
+ MKT new	x	x	+ MP new (floated)	x
+ MKT new (floated)	x	x	+ MP new	x
x	x	x	x	Priority for SR2

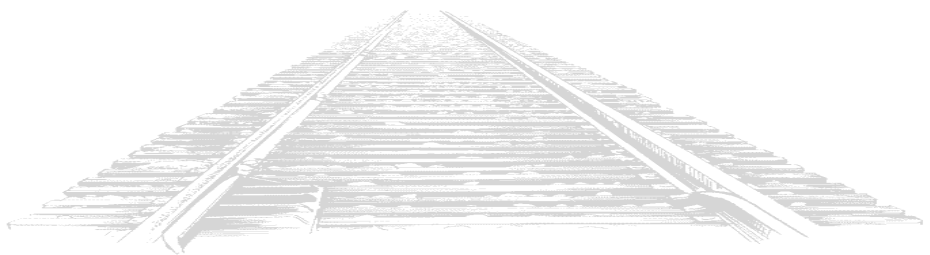
Cash Flow	b/f	Publics	c/f	Value	%	Certs
John Shelley	320	0	320	420	19.1	2
Lionel Robbins	380	-380	0	420	19.1	5
Lyndon Gurr	280	-152	128	480	21.8	3
Don Smith	370	-360	10	420	19.1	5
Willem Moene	230	-100	130	462	21.0	3

Portfolio	PCs	ATSF	FW	GMO	IC	MKT	MP	SLSF	SP	SSW	TP
John Shelley	GRSC GSC	-	-	-	-	-	-	-	-	-	-
Lionel Robbins	MRBC	-	-	-	-	-	5P	-	-	-	-
Lyndon Gurr	-	-	-	-	-	-	2	2P	-	-	-
Don Smith	SCC	-	-	-	-	5P	-	-	-	-	-
Willem Moene	MKT	-	-	-	-	1	-	1	-	-	-

Bank (new)	10P	10P	10P	10P	4	3	7	10P	10P	10P
Price (par)					72	76	100			
Bank (pool)	-	-	-	-	-	-	-	-	-	-
Price (pool)					72E	76D	100A			
Company credit					720	760	1000			
Trains					-	-	-			

Redeemed shares	-	-	-
Bank cash: 8,932	Certificate limit: 13	Trains: 7 x '2', 6 x '3'...	
Current operating order:	SLSF, MP, MKT		

Tiles	Tile number/Availability				One Operating Round between Stock Rounds							
Yellow	1/1	2/1	3/3	4/6	5/2	6/2	7/9	8/22	9/23	55/1	56/1	57/5
	58/4	69/1										



1870

GameK23

Referee:
Keith Thomasson

Private Companies	Cost	Revenue
1 Great River Shipping Company	\$20	\$5
2 Mississippi River Bridge Company	\$40	\$10
3 The Southern Cattle Company	\$50	\$10
4 The Gulf Shipping Company	\$80	\$15
5 St Louis San Francisco Railway	\$140	n/a
6 Missouri-Kansas-Texas Railroad	\$160	\$20

Public Companies	Tokens	Starting City	Destination
ATSF	3	Topeka (B9)	Southwest (N1)
FW	2	Fort Worth (J3)	Denver (A2)
GMO	2	Mobile (M20)	St.Louis (C18)
IC	2	Jackson (K16)	Chicago (A22)
MKT	3	Kansas City (B11)	Southwest (N1)
MP	3	St.Louis (C18)	Dallas (J5)
SLSF	3	Springfield (E12)	Southeast (M22)
SP	3	Southwest (N1)	New Orleans (N17)
SSW	2	Memphis (H17)	Fort Worth (J3)
TP	2	Dallas (J5)	New Orleans (N17)

© Keith Thomasson 2007

Orders required for the following rounds	By the early deadline
OR1, SR2	



1899-Z21

The 1st is floated to make it a full house.

SR6

John got an extra round of income from the FGF after it closed, so loses 10 cash.

Stock Round 6

Don	Alan	Lyndon	John
+ 1st new (floated)	+ NRC new	+ FsR new	+ Tt pool
✗	+ NRC new - 1 NRC {▼110D}	+ 1st new - 1 1st {▼90B}	+ B&M pool
✗	+ CSb pool	+ NRC pool	+ Sjs new
✗	+ XzS new	✗	✗
✗	✗	Priority for SR7	

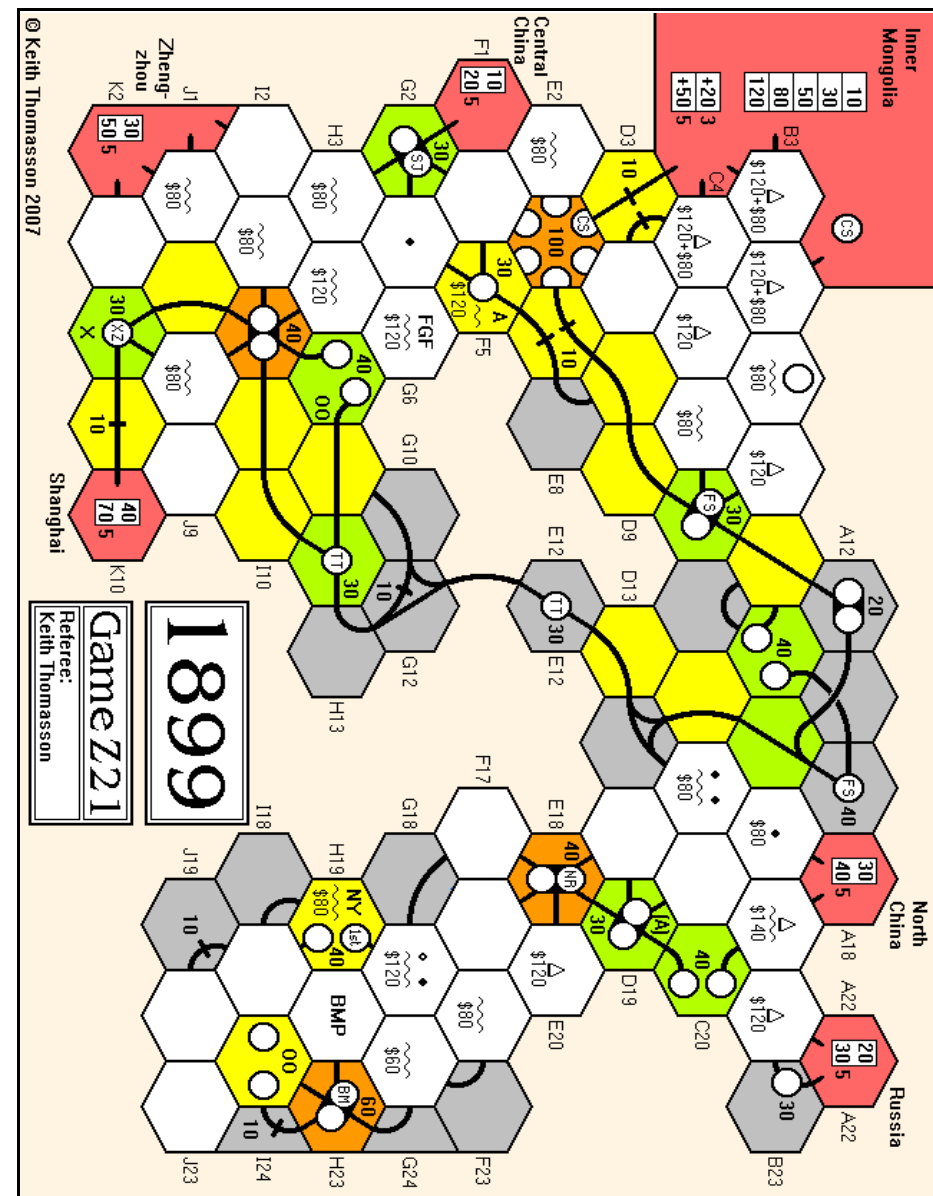
Cash Flow	b/f	SR6	c/f	Value	%	Certs
Alan Harvey	261	-242	19	1,652	29.7▲	13
Lyndon Gurr	272	-200	72	1,553	27.9▲	13/17
John Shelley	281	-234	47	1,247	22.4▼	10
Don Smith	133	-100	33	1,113	20.0▲	10

Portfolio	1st	B&M	CSb	FsR	NRC	Sjs	Tt	XzS
Alan Harvey	-	-	1	6P	1	6P	-	1
Lyndon Gurr	-	5P	5P	1	1	-	2	6P
John Shelley	-	1	-	1	6P	1	2	1
Don Smith	6P	-	-	-	-	-	6P	-

Bank (new)	3	4	3	-	-	3	-	2
Price (new)	100	67	67	90	100	100	82	100
Bank (pool)	1	-	1	2	2	-	-	-
Price (pool)	90B	54G	67H	130D	110D	100A	90E	76E
Company credit	1,000	325	572	294	452	275	837	97
Tokens	3	2	1	-	3	3	2	1
Trains	-	5	4.3	4.3	5.3	5.4	3	4.3

Bank cash: 12,977 Certificate limit: 16 Trains: 2 x '6', Diesels

Tiles	Tile number/Availability										Three Operating Rounds between Stock Rounds			
Yellow	1/-	2/1	3/2	4/3	7/6	8/5	9/9	55/1	56/1	57/5	58/3	69/1		
Green	14/3	15/1	16/1	18/1	19/1	20/1	23/3	24/3	25/1	26/-	27/1	28/1		
	29/1	54/1	59/-	981/1	982/-	991/1	992/1	993/-	994/-	995/-				
Brown	39/1	40/1	41/2	42/2	43/2	44/1	45/2	46/2	47/1	62/1	63/-	64/1		
	65/1	66/1	67/1	68/1	70/1	983/1	984/1	996/1	997/1	998/-				



Orders required for the following rounds

By the early deadline

OR9, OR10

Adjudication can pause between rounds if requested



18EU-G23

The map fills up quickly with 18EU.

OR1

OR1	Pres	Lay	Run	Pay	Notes	Price	Credit	Trains
1	PB	7:B9:5	8:A8:1	110	Half	-	55	2
2	PB	201:C8:6	4:B7:3	110	Half	-	55	2
3	LR	8:B11:4	58:B13:1	50	Half	-	25	2
4	DS	201:J7:5	4:I8:2	40	Half	-	20	2
5	MF	201:H19:4	58:G20:2	70	Half	-	35	2
6	MF	58:K12:2	9:L11:2	40	Half	-	20	2
7	DS	9:I6:2	4:H7:2	40	Half	-	20	2
8	LR	202:M16:3	7:L17:1	60	Half	-	30	2
9	MF	58:K4:3	4:L5:3	50	Half	-	25	2
10	SW	201:E18:3	57:E20:1	60	Half	-	30	2
11	MF	9:J17:2	57:I18:2	50	Half	-	25	2
12	SW	202:D3:1	8:E4:6	40	Half	-	20	2
13	DS	201:G12:1	4:G10:1	40	Half	-	20	2
14	LR	201:D13:4	8:C14:6	80	Half	-	40	2
15	SW	202:B17:2	57:B19:1	60	Half	-	30	2

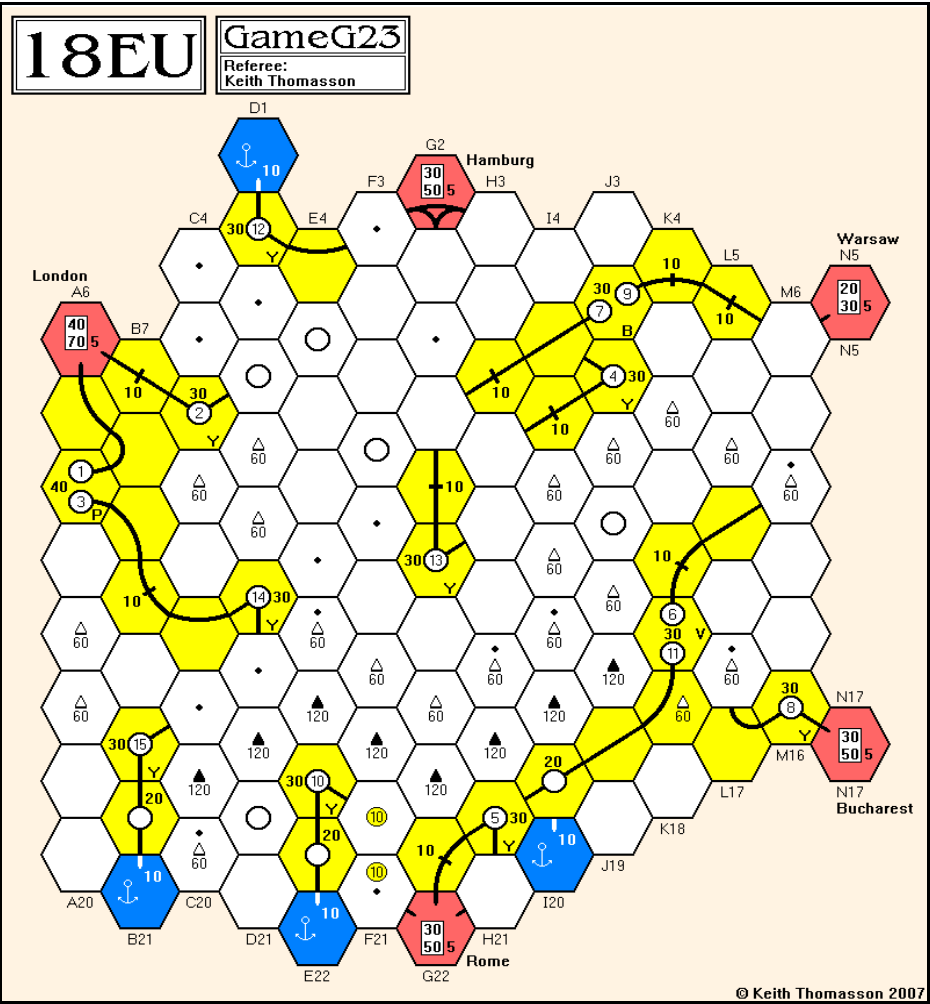
Cash Flow	b/f	OR1	c/f	Value	%	Certs
Peter Berlin	60	110	170	170	26.8	2
Lionel Robbins	35	95	130	130	20.5	3
Mark Frueh	0	105	105	105	16.5	4
Don Smith	10	60	70	70	11.0	3
Stephen Webb	200	80	160	160	25.2	3

Portfolio	Minors	BN	DR	FN	GS	IS	RA	RB	RP
Peter Berlin	1 2	-	-	-	-	-	-	-	-
Lionel Robbins	3 8 14	-	-	-	-	-	-	-	-
Mark Frueh	5 6 9 11	-	-	-	-	-	-	-	-
Don Smith	4 7 13	-	-	-	-	-	-	-	-
Stephen Webb	10 12 15	-	-	-	-	-	-	-	-

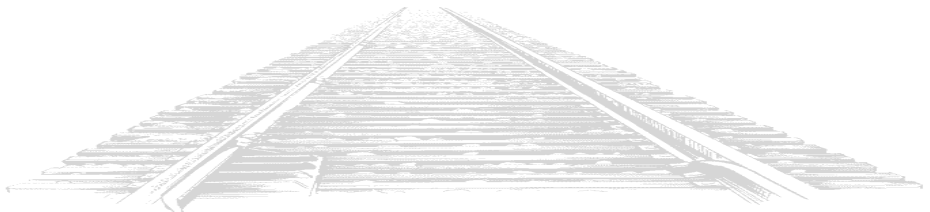
Bank (new)	10	10	10	10	10	10	10	10
Bank (pool)								
Price								
Loans								
Company credit								
Tokens	3	3	3	3	3	3	3	3
Trains								
Bank cash: 10,915	Certificate limit: 13				Trains: 5 x '3', 4 x '4'...			
Current operating order:	Minors in numerical order							

Tiles	Tile number/Availability				Two Operating Rounds between Stock Rounds				
Yellow	3/7	4/4	7/2	8/11	9/12	57/4	58/9	201/-	202/5

We'll stick with the minors for next time unless someone decides to form one of the corporations by merging their minor company into it. That option is restricted to Peter or Stephen, as they are the only ones with enough cash to buy a Presidency to merge into.



Orders required for the following round	By the early deadline
SR1	





ACQUIRE 46

It's a wrap.

GAME OVER

1st	Lyndon Gurr	£41,400
2nd	Willem Moene	£38,700
3rd	Bob Coull	£37,100
4th	John Marsden	£34,700
5th	Tony Wilcock	£31,000

Lyndon Gurr (1st): I held off from making Tower bigger in the hope that it would merge into another chain and release some capital. Then all of a sudden it became larger, took over other chains and became safe. As the mergers gave me the capital I needed, I suddenly found myself in a very good position and was able to hold on for the victory. Half way through the game I couldn't see a way to get into contention. How wrong we can be sometimes.

Thanks to Keith for running the game and to the other players for a very enjoyable tussle.

John Marsden (4th): A well-played game, with a consequently close result. I suffered from not getting any decent merger bonuses, which is just the way it goes. Congratulations to Lyndon for riding his luck.

Tony Wilcock (5th): I finished last as usual but not so far behind. Congratulations to Lyndon Gurr on his win.

Some games are decisive, this one was close to the end, with at least three in with a chance until late on. Good game.



GOLDEN STRIDER 7

A lot of jostling for position.

ROUND 2

63 space standard race	Cards				D	M	B	R	S	P	O
Roger Trethewey	10/0	5/0	5/0	4/0	9/1	8/2	-	6	4	8	1
Joakim Spångberg	2/0	4/0	8/0	9/0	9/1	9/2	-	4	4	9	2
Don Shaller	7/0	6/0	5/0	4/0	8/1	5/2	-	2	2	5	3
Steve Ham	10/0	8/0	6/0	2/0	5/1	8/2	-	3	3	8	5
Jim Reader	6/0	6/0	6/0	6/0	9/1	10/2	-	2	4	10	4
Kevin Lee	3/0	6/0	7/0	10/0	6/1	10/2	-	3	4	10	4
Simon Brooks	10/0	7/0	5/0	3/0	7/1	4/2	-	1	2	4	3

Overtaking costs will come into force from the next round.

Orders required

Third card, split between movement and banking



ACQUIRE 47

No mergers, so no more cash to spend.

ROUND 8

Colin	7-B	No purchases.
Simon	4-I	No purchases.
Willem	1-I	Buys 3 American @ £300.
Michael	3-A	Buys 3 American @ £500.
John	5-B	No purchases.
Colin	11-H	No purchases.

1-A	A	A	A	5-A	6-A	7-A	8-A	I	I	I	I
2-B	3-B	A	A	6-B	8-B	9-B	I	I	I	I	I
1-C	2-C	W	4-C	5-C	7-C	8-C	L	10-C	I	I	I
W	W	W	4-D	6-D	L	L	L	10-D	I	I	I
1-E	2-E	3-E	5-E	6-E	L	8-E	9-E	10-E	11-E	I	I
1-F	3-F	4-F	5-F	C	7-F	9-F	10-F	11-F	I	I	I
1-G	2-G	3-G	4-G	C	C	C	8-G	9-G	10-G	11-G	12-G
F	F	F	F	5-H	C	7-H	8-H	T	T	T	12-H
F	2-I	F	F	5-I	C	C	8-I	9-I	T	11-I	

	Lux	Tow	Ame	Fes	Wor	Con	Imp	Cash	Value
Michael Graystone	13	6	9	-	-	-	-	£1,500	£27,300
John Colledge	-	-	3	8	3	-	5	-	£29,900
Colin Sharpe	1	-	4	-	-	-	7	£200	£18,400
Simon Brooks	10	-	-	-	-	3	3	-	£20,600
Willem Moene	-	10	9	1	1	1	-	£3,600	£33,500
Bank Stock	1	9	-	16	21	21	10		
Chain Size	5	4	5	7	4	7	13		
Chain Value	500	400	600	700	500	800	900		

Playing sequence

Simon, Willem, Michael, John, Colin, Simon again



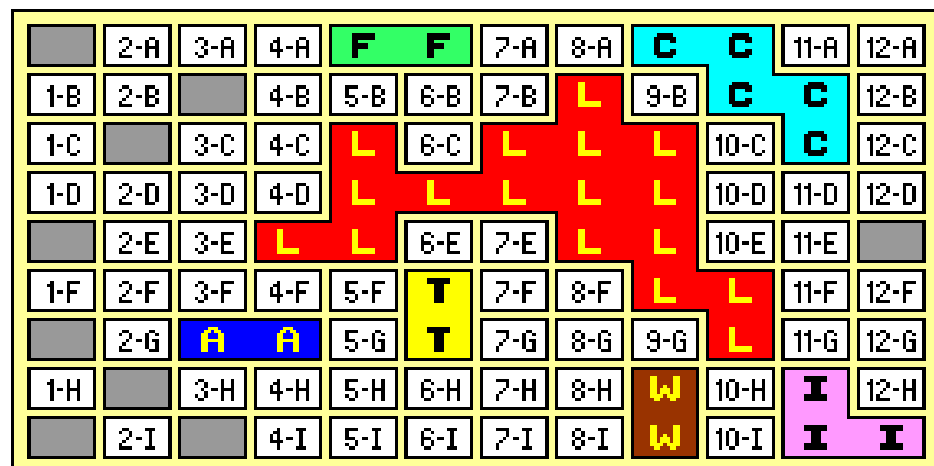


ACQUIRE 48 {SP}

John, you'd already used your 'Buy 5' Power - can't do it again :-)

ROUND 6

John 6-G Forms Tower, one free share. Buys 3 Tower @ £200.
 Colin 5-E Buys 1 Imperial @ £500.
 Richard 3-B (Uses 'Buy 5' Power) Buys 5 Worldwide @ £300.
 Michael 8-B No purchases.
 John 4-E Buys 3 Festival @ £300.



	Lux	Tow	Ame	Fes	Wor	Con	Imp	Cash	Value
Richard Lunn	-	8	-	3	13	2	3	£2,700	£24,800
Michael Graystone	7	-	1	7	10	-	-	-	£21,300
John Colledge	5	7	-	9	-	2	1	£1,600	£20,400
Colin Sharpe	13	-	-	-	-	-	9	-	£25,600

Bank Stock	-	10	24	6	2	21	12
Chain Size	17	2	2	2	2	5	3
Chain Value	700	200	300	300	300	700	500

Powers used: Richard: B5/T5 Michael: 3F/T5/P4 John: B5/T5 Colin: B5/T5

Playing sequence

Colin, Richard, Michael, John, Colin again

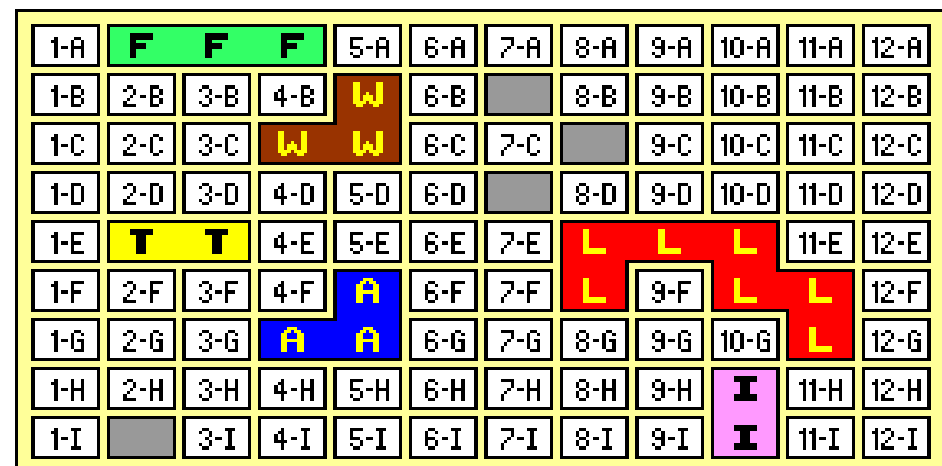


ACQUIRE 49

Two more chains, with Continental still to come.

ROUND 4

Lyndon 10-H Forms Imperial, one free share. Buys 3 Tower @ £200.
 Tony 2-I Buys 3 Luxor @ £600.
 Kevin 4-C Forms Worldwide, one free share. Buys 3 American @ £300.
 Colin 7-B Buys 1 Luxor @ £600, 2 American @ £300.
 Lyndon 5-F Buys 3 Imperial @ £400.



	Lux	Tow	Ame	Fes	Wor	Con	Imp	Cash	Value
Tony Wilcock	3	3	-	-	-	-	-	£4,400	£9,300
Kevin Lee	3	-	10	-	2	-	-	£4,500	£20,600
Colin Sharpe	7	-	7	-	1	-	-	£2,000	£19,400
Lyndon Gurr	-	12	-	2	-	-	4	£2,300	£21,100

Bank Stock	12	10	8	23	22	25	21
Chain Size	7	2	3	3	3	-	2
Chain Value	600	200	400	400	400	-	400

Playing sequence

Tony, Kevin, Colin, Lyndon, Tony again





AGE OF STEAM 1

Michael tries to Urbanise
but Mike has that privilege.

ROUNDS 4-5

Build track

Michael	Blue	8:L10:1	8:L8:2	8:M7:3		Cost: 6
Mike	Green	8:G19:3	New E (Michigan)	8:J16:1	9:J14:1	Cost: 7
Sharon	Red	9:D14:2	9:C13:1	9:C11:1		Cost: 6
Marcus	Purple	8:D16:4	8:D18:1	9:E19:3		Cost: 6

Move goods

Mike	Yellow - Evansville to Terre Haute {2}	Yellow - St.Louis to Michigan {3}
Sharon	Purple - Des Moines to Indianapolis {4}	Purple - Des Moines to Indianapolis {4}
Michael	Yellow - Toledo to Wheeling {4}	Increase locomotive \Rightarrow 5
Marcus	Red - Detroit to Pittsburgh {3}	Blue - Toronto to Cincinnati {3}

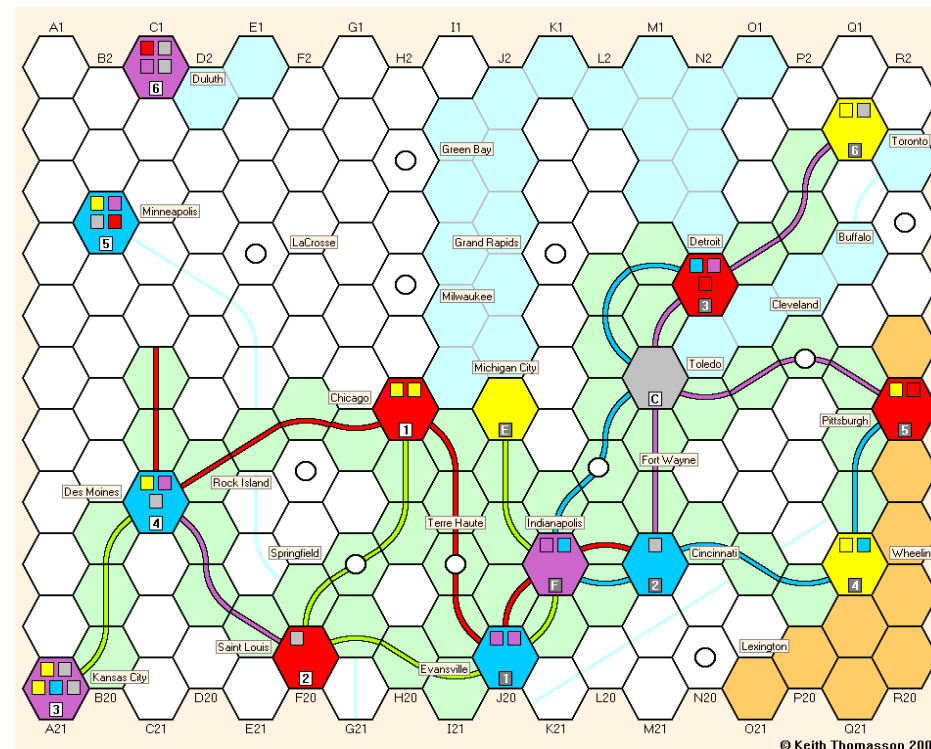
Goods growth: 1,3,4,6 for the west, 2,3,5,5 for the east. 5 goods are added to the map.

Round 5	MH	SK	ML	MP
Shares issued	1	1	1	1
Turn order auction	2	✕ (4th)	3	Free pass
	4	-	5	✕ (3rd)
	✕ (2nd)			

	ML	MH	MP	SK
Select actions	Loco \Rightarrow 6	First build	Urbanise	Engineer

	Engine	Cash b/f	Builds	Income	Exp	Shares	Order	Cash c/f	VPs
Mike Hutton	3	15	-7	8+5=13	-13	10+1=11	-4	9	14
Sharon Khan	4	7	-6	9+8=17	-13	9+1=10	-	10	28
Michael Longdin	4⇒5⇒6	16	-6	11+4=15	-18	13+1=14	-5	7	10
Marcus Pratt	3	7	-6	11+6=17	-11	8+1=9	-	12	29

Income reduction moves everyone back two spaces on the income track.



Goods Display

Figure 1 shows two 6x6 grids. The left grid has a robot at (3,1) and a goal at (6,6). The right grid has a robot at (3,3) and a goal at (6,6). The grids are labeled 1 through 6 at the top. The cells are colored: white for free space, blue for robot, red for goal, and grey for obstacles. In the left grid, obstacles are at (4,6), (5,5), (5,6), and (6,5). In the right grid, obstacles are at (4,4), (4,5), (4,6), (5,4), (5,5), (5,6), (6,4), (6,5), and (6,6).

Orders required

Build track and move goods, then issue shares, turn order and select actions



BREAKING AWAY 16

William Tell is in no rush.

ROUND 14

Pos	Riders	New
1st	Thomas (20 pts)	
2nd	Gordon (16 pts)	
120	William Tell	3
119	-	
118	-	
117	-	
116	-	
115	-	
114	Donner Oven	3
113	Nimrod	5
112	Mars	6
111	-	
110	Robin Hood Jupiter	3
109	Odysseus Pluto	5
108	-	
107	Earth Latex Blitzen	3
106	Coagulant Inky	6
105	Rudolph Henry Blinky	8
104	-	
103	Pinky	3

Simon Brooks (13) <i>Ditchling Beacon Bykers</i>	
A Rudolph (6)	3 3 5 8
B Donner (4)	3 3 5
C Blitzen (3)	3 3 5
D Dixen	Dropped
Tim Franklin <i>Ghost Riders</i>	
A Inky	3 4 6
B Pinky	3 4 9
C Blinky	3 6 8
D Clyde	Dropped
Steve Ham (15) <i>The Toxophilites</i>	
A Robin Hood (5)	3 5 7 11
B Odysseus (7)	3 5 8
C Nimrod (3)	3 3 5
D William Tell	3 6 6
Sharon Khan (68) <i>Thomas the Tank Engine</i>	
A Thomas (40)	First
B Henry (4)	3 5 8
C James	Dropped
D Gordon (24)	Second
Kevin Lee (13) <i>The Planets</i>	
A Earth (8)	3 3 7 7
B Mars	3 4 6
C Jupiter	3 3 7
D Pluto (5)	3 5 5
Jim Reader (5) <i>Latex Dipping</i>	
A Coagulant (4)	3 3 6 7
B Latex (1)	3 4 7
C Former	Dropped
D Oven	3 3 3



William Tell takes his feet off the pedals and cruises towards the line, while the group behind him are short of the steam they need to score next time, whether they want to or not.

It's going to be a slow finish after Thomas' lightning start.

Orders required

Cards for round fifteen



BREAKING AWAY 17

Five sprint points have been awarded.

ROUND 5

Pos	Riders	New
43	Harmony (6 pts) Endeavour (10 pts) The Other (4 pts)	3
42	-	
41	Mayflower (5 pts) Fran (8 pts)	3
40	Symphony	5
39	Orlando Gardner	6
38	-	
37	Mister Sellars	3
36	-	
35	-	
34	-	
33	Deadly	3
32	-	
31	DiNozzo Xabbu Wolfgang McGee	3
30	Terry Florian Melody Victory Boggly	7
29	Rhapsody	12
28	Discovery	13
27	Gibbs Ralf Abby	14
26	-	
25	Karl	3

Kevin Lee (15) <i>Ships Ahoy</i>	
A Mayflower (5)	3 4 6 7
B Endeavour (10)	3 3 3
C Victory	3 7 11
D Discovery	6 10 13
Richard Lunn (8) <i>Mustn't Grumble</i>	
A Terry	3 3 7 15
B Fran (8)	3 3 4
C Deadly	3 5 7
D Boggly	3 5 7
Jim Reader (4) <i>Otherland</i>	
A Orlando Gardner	3 3 6
B Xabbu	3 3 3
C Mister Sellars	3 3 9
D The Other (4)	3 3 8
Joakim Spångberg <i>Kling Klang Radfahrers</i>	
A Ralf	3 11 12 14
B Florian	6 7 10
C Wolfgang	3 9 10
D Karl	3 3 6
Allan Stagg (6) <i>Destiny's Angels</i>	
A Harmony (6)	2 3 3 5
B Melody	3 7 7
C Rhapsody	6 9 12
D Symphony	3 5 6
Roger Trethewey <i>NCIS</i>	
A Gibbs	3 14 15
B DiNozzo	3 6 6
C Abby	2 3 14
D McGee	2 3 3



Ships Ahoy take the team lead with two of the sprint points awarded so far. Their B rider, *Endeavour*, takes the individual lead.

Orders required

Cards for round six



Bus Boss 299-NWA

HEAR is the only to to miss out on a solo run.

ROUND 9

GRUBBY didn't pay LEEK for run 14, because I had missed a route of his off my map. The finishing order for the run did not change.

North Wales

Round 9 Runs				GRUB	ARFC	HEAR	MARS	LEEK	
8	9♥ Llanidloes 3♠ Ruabon	① GRUBBY	13			-5			8
		① MARS	12			-8			4
		③ HEAR	5	+5			+8		18
17	7♠ Oswestry 8♥ Devils Bridge	① MARS	30						30
19	J♥ Newtown K♣ Bettws Y Coed	① LEEK	16						16
		② GRUBBY	9						9
		③ HEAR	5						5
20	7♦ Rhuddlan 6♠ Y Bala	① ARFC	30						30
21	10♣ Criccieth 3♥ Dolgellau	① MARS	20					-2	18
		② LEEK	10				+2		12
22	9♠ Pwllheli A♥ Harlech	① LEEK	30						30
23	K♦ Dinbych 7♥ Aberystwyth	① {MARS ARFC}	10 10					+5 +3	15 13
		② LEEK	10		-3		-5		2
24	5♠ Corwen K♥ The South	① MARS	15			+10/-9			16
		① HEAR	15				+9/-10		14
25	2♦ Llandudno J♠ Montgomery	① GRUBBY	30						30
26	J♣ Porthmadog A♠ Wrexham	① ARFC	16					-7	9
		② GRUBBY	9			-2		-3	4
		③ LEEK	5	+3	+7	-6			9
		✕ HEAR		+2				+6	8

Round 9 Routes

Holywell Expressways Are Rampant (HEAR) (Kevin Lee, Blue)
Llanidloes - Devils Bridge, Queensferry - Mold (12)

Graystone Runs Ugly Brown Buses Yet-Again (GRUBBY) (Michael Graystone, Brown)
Newtown - The South (6)

Machynlleth's Attractive Road Services (MARS) John Marsden, Green)
Porthmadog - Criccieth (4)

Ann Robinson Fan Club (ARFC) (Steve Ham, Orange)
None.

Llangollen Electric Engine Korporation (LEEK) (Colin Sharpe, Red)
Flint - Mold - Wrexham (10)

Scores

	Runs:	8	17	19	20	21	22	23	24	25	26	Routes	Score
LEEK	123	-	-	16	-	12	30	2	-	-	9	-10	182
MARS	106	4	30	-	-	18	-	15	16	-	-	-4	185
ARFC	119	-	-	-	30	-	-	13	-	-	9	-	171
GRUBBY	92	8	-	9	-	-	-	-	-	30	4	-6	137
HEAR	86	18	-	5	-	-	-	-	14	-	8	-12	119

Round 10 runs

27.	7♦ - 10♥	Rhuddlan to Caersws
28.	2♠ - 4♥	Wrexham to Machynlleth
29.	7♣ - K♥	Llanberis to The South
30.	9♣ - 6♥	Pwllheli to Aberdyfi
31.	Q♣ - 5♠	Blaenau Ffestiniog to Corwen
32.	A♣ - 9♠	Amlwch to Llanfair Caereinion
33.	6♠ - 7♥	Y Bala to Aberystwyth
34.	Q♠ - 5♣	England to Bangor
35.	A♦ - J♠	Conwy to Porthmadog

Runs	Routes
Enter up to 5	Buy in the order Kevin, Michael, Steve, John, Colin



Bus Boss 300-KYR

A solo run helps SMART consolidate his lead.

ROUND 8

Kyrgyzia

Round 8 Runs				BRK	SMART	GRUB	HILLS	RR	
5	Q♦ Dostuk 4♠ Kyzyl-Suu	① SMART	30						30
11	K♣ Kazarman 2♥ Raval	① HILLS	30	-2				-2	26
		✕ RR					+2		2
		✕ BROOKS					+2		2
12	8♦ Balykohy 9♥ Gul'Cha	① RR	16				+3		19
		② SMART	9			-5			4
		③ HILLS	5					-3	2
		✕ GRUBBY			+5				5
14	Q♥ Osh A♣ Terek Say	① GRUBBY	15				+6		21
		① HILLS	15			-6			9
15	10♦ Kochkorka 5♠ Toktogul	① {GRUBBY BROOKS}	8 8				+2	+7	15 10
		② RR	9			-7			2
		③ HILLS	5	-2					3
16	J♠ Chatyr-Tash A♦ Kara-Balta	① SMART	15	-6			-3	+4	10
		① RR	15		-4		-3		8
		✕ HILLS			+6				6
		✕ BROOKS			+3			+3	6

17	5♦ Kazakhstan K♥ Uzgen	① RR 11 +4					15
		② BROOKS 7		+3	+3	-4	9
		③ HILLS 5 -3		+4			6
		④ SMART 4					4
		⑤ GRUBBY 3 -3			-4		-4
18	9♦ Tyup 9♠ Naryn	① SMART 15					15
		① RR 15					15

Round 8 Routes
Buses Running On Own Kinetic Servomechanism (BROOKS) (Simon Brooks, Orange)
Bishkek - Kara Balta, Kadzhi-Say - Kyzyl-Suu (12)

Highland and Lowlands Lines (HILLS) (Jim Reader, Yellow)
Toktogul - Talas, Tash-Kumyr - Mayli-Say (12)

Robertson's Routemasters (RR) (Simon Robertson, Blue)
Tyup - Karakol - Enilchek (12)

Graystone Runs Ugly Brown Buses Yet-again (GRUBBY) (Michael Graystone, Brown)
Kara-Balta - Talas (9)

Small Mountainous Asian Republic Travel (SMART) (Bob Coull, Black)
Kochkorka - Tunuk, K  k-Art - China (12)

Scores	Runs:	5	11	12	14	15	16	17	18	Routes	Score
SMART	96	30	-	4	-	-	10	4	15	-12	147
GRUBBY	86	-	-	5	21	15	-	-4	-	-9	114
RR	62	-	2	19	-	2	8	15	15	-12	111
HILLS	51	-	26	2	9	3	6	6	-	-12	91
BROOKS	49	-	2	-	-	10	6	9	-	-12	64

Round 9 Runs
10. 6♣ - A♥ Kara-Kul to Sulyukta (not yet available)
13. 4♣ - 3♦ Talas to Bishkek
19. A♠ - 6♦ Dzhergalan to Tokmak (not yet available)
20. Q♣ - 8♥ Dzhalal-Abad to Tajikistan
21. 7♥ - K♦ Kyzyl Kiya to At-Bashy
22. 7♠ - 2♦ Kara-Say to Tunuk (not yet available)
23. 2♠ - 7♦ Karakol (north) to Kermin
24. 8♣ - 8♠ Mayli-Say to Karakol (south) (not yet available)
25. 3♣ - K♠ Leninpol to China (not yet available)
26. 6♠ - 6♥ Enilchek to Irkeshtam

Runs	Routes
Enter up to 5	Buy in the order Simon B, Jim, Simon R, Michael, Bob

Bus Boss 301-CRO

Most of the unconnected towns are in the north.

Round 5

I missed the last route chosen by BUM last time, which was Coney Hall to Addington Village. He was charged for it, it just wasn't reported.

Croydon
You Expect A Helpful Bus Under Thames, Never Opine Belief Upon Taxis (YEAH BUT NO BUT) (Rob Thomasson, Red)

Crystal Palace - South Norwood - West Croydon 55 - 10 45

Bloody Useless Management (BUM) (Jim Reader, Yellow)
South Croydon - Purley - Coulsdon 54 - 11 43

South Norwood & Addington Into Lewisham (SNAIL) (Mike Hutton, Green)
Woodside - Beckenham - Peter Pan Pool 53 - 10 43

Bright Blue Buses (BBB) (Roger Trethewey, Blue)
Banstead - Carshalton - Carshalton Ponds 56 - 12 44

Abacus Bus Croydon (ABC) (Joakim Sp  ngberg, Black)
Purley - Whyteleafe, Sanderstead - Warlingham 53 - 11 42

Routes
Buy in the order Jim, Mike, Roger, Joakim, Rob

Bus Boss 304-EAN

Second time around for this map in the zine.

New Game

The first game on this map took six players, so there'll be a little more room for everyone in this one. Your dealing order for the first round is:

Don Shailer	8 Clifton Green, Aylesbury, Bucks, HP19 3JW
Bob Coull	1 Lingfield House, Lancaster Street, London, SE1 0RW
John Marsden	91 Westwood Avenue, Lowestoft, Suffolk, NR33 9RS
Colin Sharpe	94 Surrey Grove, Sutton, Surrey, SM1 3PN
Jim Reader	55A Yamate-Cho, Naka-ku, Yokohama 231-0862, Japan

Maps enclosed for all. You should already have copies of the rules. Let me know if you need a set, or get them from the web site - www.fwtwr.com/postal_games/bus_boss.htm.

Routes
Buy in the order Don, Bob, John, Colin, Jim
Don't forget company names and colour preferences



OUTPOST 25

David has the busiest round.

ROUND 11

Commander Actions

- Marcus Bought one New Chemicals Factory (w:30 r:13 m:17)
- Bought one Population Unit (r:13)
- Jim Bought two Titanium Factories (o:3,4 w:6,7,7,9 t:11,13)
- Sharon Auctioned a Laboratory for 80 and got it (w:30 t:9,44) plus a free Research Factory
- David Auctioned a Scientists for 40. Kevin joined at 48, Willem at 49. Kevin dropped out at 70, David at 71. Willem got it for 71 reduced to 41 after Data Library discounts (o:5 w:5,5,5,8,8)
- Auctioned a Robots for 50. Kevin joined at 58. David dropped out at 58. Kevin got it for 58 (o:1,4,4,5 w:6,8,30) plus a free Robot
 - Auctioned a Robots for 50 and got it (m:16,16,18) plus a free Robot
 - Bought two Titanium Factories (w:30,30)
 - Bought two Robots (t:9,11)

Kevin Passed

WillemPassed

PO	Name	Factories	Population	Robots	Production
1	Marcus	2o,4w,2r,1n	8 (8)	0 (0)	2o,1W,2r,1m,1n (99,15)
2	David	2o,4w,3t	5 (5)	3 (5)	1o,1W,3t,3m (114,15)
3	Sharon	2o,4w,4t,1r	8 (8)	0 (0)	3w,5t,1r (84,10)
4	Jim	2o,3w,4t	8 (8)	0 (0)	1o,3w,4t,2r (90,15)
5	Kevin	2o,6w	8 (8)	1 (8)	2o,2w,1W (50,15)
6	Willem	2o,5w	5 (5)	0 (0)	3w,1W,3r (90,10)

PO	Name	Colony Cards	[35 VPs for the final phase]	Victory Points
1	Marcus	WH, Nod, OL, Lab		23 (180)
2	David	WH, HE, OL, OL, Rob		22 (205)
3	Sharon	HE, Nod, Lab		21 (135)
4	Jim	WH, HE, Nod, Sci		18 (120)
5	Kevin	DL, WH, Nod, Rob		15 (115)
6	Willem	DL, DL, DL, Sci, Sci		12 (125)

Data Library	0	Sold out	Orbital Lab	0	(1 more)
Warehouse	0	Sold out	Robots	1	(1 more)
Heavy Equipment	1	(none left)	Laboratory	0	(2 more)
Nodule	0	Sold out	Ecoplants	1	(3 more)
Scientists	0	(1 more)	Outpost	3	(1 more)

Orders required

Round twelve auctions, bids and purchases



OUTPOST 26

Two rounds? No chance.

ROUND 1

Commander Actions

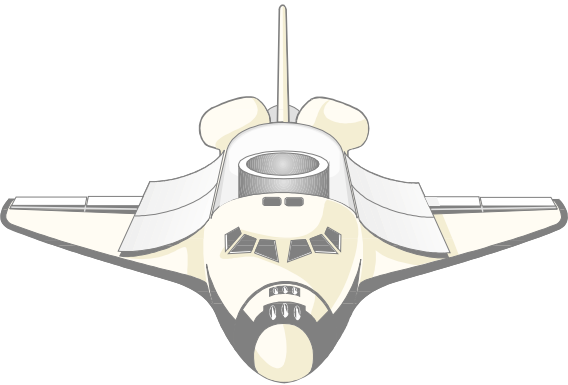
- Jim Bought one Water Factory (o:1,5 w:5,9)
- Marcus Bought one Water Factory (o:3,3 w:4,10)
- WillemAuctioned a Data Library for 15 and got it (o:1,2,4 w:8)
- Geoff Bought one Water Factory (o:2,4 w:6,8)
- Lyndon Bought one Water Factory (o:3,3 w:6,8)

PO	Name	Factories	Operators	Colony Cards	Production	VPs
1	Willem	2o,1w	3p (5,0)	DL	3o,2w (23,10)	4 (15)
2	Lyndon	2o,2w	3p (5,0)	-	3o,2w (23,10)	3 (0)
3	Marcus	2o,2w	3p (5,0)	-	3o,2w (23,10)	3 (0)
4	Geoff	2o,2w	3p (5,0)	-	3o,2w (23,10)	3 (0)
5	Jim	2o,2w	3p (5,0)	-	3o,2w (23,10)	3 (0)
Data Library 0 (2 more) Heavy Equipment . . 1 (2 more)						
Warehouse 2 (1 more) Nodule 2 (1 more)						

Willem takes the single Data Library unopposed. It is replaced by a Nodule.

Orders required

Round two auctions, bids and purchases





PUERTO RICO 5

Three more big buildings find homes.

ROUND 13

Jim is the Trader and trades Tobacco (Indigo was already in the house...).

Brian trades Coffee, Paul trades Sugar. The Trading House is emptied.

Brian is the Captain. The Coffee ship is emptied.

Paul is the Builder (+1) and builds the Guild Hall.

Allan passes, Jim builds the City Hall, Brian builds the Customs House.

Allan is the Craftsman and produces an extra Corn.

Roles	Builder	Captain	Craftsman	+2 Mayor
	+3 Settler	Trader	+1 Prospector	

Quarries	Plantations (Fields)	Trading House	Ship	Supply
3	Sug Sug Tob Tob Cof	- - - -	5	24

Buildings								
1 VP	SIP	1	SSM	2	SMA	×	HAC	2
2 VPs	LIP	2	LSM	3	HOS	1	OFF	2
3 VPs	TOB	×	COF	2	FAC	1	UNI	2
4 VPs	GUI	×	RES	1	FOR	×	CUS	×

Cargo Ships	5: Empty	6: Sugar	7: Tobacco
	- - - - -	✓ ✓ ✓ - - -	✓ ✓ ✓ ✓ - - -

Jim	Small indigo plant	Tobacco storage	Small warehouse	Hospice
Reader	Fortress	City hall		
DbIns: 0				
Chips: 7	Fields: Qry✓✓✓✓ Ind✓ Tob✓✓ Cof✓	Goods: Ind✓✓ Tob✓✓		
Brian	Small indigo plant	Tobacco storage	Coffee roaster	Small market
Tappenden	Factory	Customs house		
DbIns: 6				
Chips: 17	Fields: Crn✓✓✓ Ind✓ Tob✓✓ Cof✓✓	Goods: Crn✓ Ind✓✓ Tob✓ Cof✓✓		
Paul	Small sugar mill	Indigo plant	Tobacco storage	Small market
Tappenden	Large warehouse	Guild hall		
DbIns: 4				
Chips: 14	Fields: Crn✓ Ind✓✓✓ Sug✓ Tob✓ Cof✓✓	Goods: Crn✓✓ Ind✓✓✓ Sug✓ Tob✓		
Allan	Small indigo plant	Small sugar mill	Small warehouse	Wharf
Stagg				
DbIns: 2				
Chips: 24	Fields: Qry✓ Crn✓✓✓ Ind✓ Sug✓ Cof✓	Goods: Crn✓✓✓ Ind✓✓ Sug✓		

Orders required

Round fourteen orders in the sequence Brian, Paul, Allan, Jim



PUERTO RICO 6

The quay is getting full of barrels.

ROUND 9

Rob is the Mayor.

Jim is the Builder and builds a Large Market.

Tony is the Trader (+1) and trades Corn. The Trading House is emptied.

Lionel is the Craftsman and produces an extra Corn (no Tobacco left).

Roles	Builder	+1 Captain	Craftsman	Mayor
	+2 Settler	Trader	+2 Prospector	

Quarries	Plantations (Fields)	Trading House	Ship	Supply
3	Crn Ind Sug Sug Tob	- - - -	4	31

Buildings								
1 VP	SIP	2	SSM	4	SMA	×	HAC	×
2 VPs	LIP	2	LSM	2	HOS	1	OFF	2
3 VPs	TOB	1	COF	2	FAC	1	UNI	2
4 VPs	GUI	1	RES	1	FOR	1	CUS	1

Cargo Ships	5: Corn	6: Empty	7: Sugar
	✓ ✓ ✓ - -	- - - - -	✓ - - - - -

Rob	Indigo plant	Coffee roaster	Construction hut
Thomasson			
DbIns: 1	Fields: Qry✓✓ Ind✓✓ Cof✓	Goods: Ind✓✓ Cof✓	
Chips: 7			
Jim	Small indigo plant	Tobacco storage	Small warehouse
Reader	Large market		
DbIns: 1			
Chips: 1	Fields: Qry✓✓ Ind✓ Tob✓✓	Goods: Ind✓✓ Tob✓✓✓	
		4 men are in San Juan	
Tony	Sugar mill	Small market	Hacienda
Sait	Factory		
DbIns: 7			
Chips: 5	Fields: Qry✓ Crn✓ Sug✓✓✓	Goods: Crn✓ Sug✓✓✓✓	
Lionel	Small indigo plant	Tobacco storage	Small market
Robbins	Wharf		
DbIns: 1			
Chips: 6	Fields: Crn✓✓ Tob✓✓✓	Goods: Crn✓✓✓ Tob✓✓✓✓	

Orders required

Round eight orders in the sequence Jim, Tony, Lionel, Rob

PUERTO RICO 7

The Craftsman comes and
leaves two people untouched.

ROUND 2

Kevin is the Builder and builds a Small Sugar Mill.

Willem builds a Small Sugar Mill, Tony builds a Construction Hut.

Willem is the Craftsman $\{+1\}$ and produces an extra Corn.

.....
Tony is the Trader $\{+1\}$.

Jim is the Mayor.

Roles	Builder	+2 Captain	Craftsman	Mayor
	+1 Settler	Trader	+1 Prospector	

Quarries	Plantations {Fields}					Trading House				Ship	Supply
7	Ind	Ind	Ind	Sug	Tob	Crn	-	-	-	4	65

Buildings



1 VP	SIP	3	SSM	2	SMA	✗	HAC	2	CON	✗	SWA	2
2 VPs	LIP	3	LSM	3	HOS	2	OFF	2	LMA	2	LWA	2
3 VPs	TOB	3	COF	3	FAC	2	UNI	2	HAR	2	WHA	2
4 VPs	GUI	1	RES	1	FOR	1	CUS	1	CIT	1		

Cargo Ships

5: Empty					6: Empty						7: Empty						
-	-	-	-	-	-	-	-	-	-	-	-	-	-	-	-	-	-

Jim  Small indigo plant
Reader Fields: Qry✓ Ind✓ Goods: ✕
Dblns: 2
Chips: 0

Kevin Lee
 DbIns: 1
 Chips: 0



	Small sugar mill		Construction hut
---	------------------	---	------------------

Fields: Ind ☒ Sug ☒ Goods: ☒

Willem Moene
 DbIns: 2
 Chips: 0

Fields: Crn✓ Sug✗

Goods: Crn✓✓

Tony			
Sait			
Dblns: 3	Fields: Crn✓X		Goods: X
Chips: 0			

Orders required

Round three orders in the sequence Willem, Tony, Jim, Kevin

RAILWAY RIVALS 2047-DX

It's pretty tight
across the board.

ROUND 9

Dixieland - South East USA

Round 9 Runs

Round 9 Runs			SAD	REAR	BUM	SNIB	JAZZ
15	21 New Bern/ Wilmington 64 Cincinnati	① SNIBBOR 15 ① JAZZ 15 ✕ REAR		-4			+4
16	54 Memphis 25 Spartanburg	① REAR 20 ② {BUM } 5 SAD } 5	+3		+3		
17	32 Savannah 42 New Orleans	① SAD 20 ② BUM 10		-3 -3			
18	66 Bluefield/ Huntington ⚡5 The Mid West	① SNIBBOR 20 ② JAZZ 10				-5	+5
19	55 Nashville 16 Norfolk	① SNIBBOR 20 ② BUM 10 ✕ JAZZ ✕ SAD	-1		+4 +1		-4
20	11 Hagerstown/ Parkersburg 33 Jacksonville	① JAZZ 16 ② SAD 7 ② BUM 7	-5		-2		+5
21	45 Jackson ⚡1 South Florida	① REAR 15 ① SAD 15	+1	-1			

Round 9 builds

South And Delta (SAD) (Steve Ham, Grey)

G17 - Columbus. -4 (builds) $+1$ (REAR) $+3$ (JAZZ) = 0

Richmond Expressways Are Rampant (REAR) (Kevin Lee, Brown)

I9 - F7. -5 (builds) -1 (SAD) -1 BUM) -1 (SNIBBOR) = -8

Bloody Useless Management (BUM) (Jim Reader, Yellow)

Jacksonville - A25, A62 - Paducah. -10 (builds) +1 (REAR) = -9

Seacoast New Ironworks, Bessemer, Birmingham & Ohio Railroad (SNIBBOR)

(Lionel Robbins, Red)

Evansville - D60 - B59 - B58 - Cairo.

-8 (builds) +3 (towns) +1 (REAR) = -4

Just Another Zany Zone (JAZZ) (Colin Sharpe, Blue)

H21 - H12 - G12. -10 (builds) -3 (SAD) = -13

Scores

	Runs:	15	16	17	18	19	20	21	Builds	Score
SNIBBOR	119	15	-	-	25	20	-	-	-4	175
SAD	125	-	2	20	-	1	10	14	-	172
BUM	146	-	2	10	-	5	9	-	-9	163
REAR	115	4	26	-	-	-	-	16	-8	153
JAZZ	108	11	-	-	5	4	11	-	-13	126

Round 10 Runs

22.	45 - 11	Jackson to Hagerstown/Parkersburg
23.	42 - 66	New Orleans to Bluefield/Huntington
24.	63 - 26	Louisville to Augusta/Columbus
25.	56 - 05	Chattanooga/Knoxville to the Mid West
26.	14 - 36	Richmond to Atlanta
27.	24 - 52	Charlotte to Meridian/Montgomery
28.	33 - 03	Jacksonville to any seaport (except for Jacksonville or Savannah)

JAZZ tried to reach Cincinnati via his line to G70, but that doesn't connect with SNIBBOR's line, which went from Lexington to Cincinnati via F71, so he had to pay more to use the line from Lexington.

Runs	Builds
Enter up to 4	Up to 10 points excluding payments to rivals



RAILWAY RIVALS 2051-EA

COLIN stretches his lead.

ROUND 8

East Anglia

Round 8 Runs

			GREAT	WEAR	ODE	TGV	COLIN	
8	25 Cambridge	① COLIN	15		+5			20
	52 Bury St Edmunds/Woodbridge	① ODE	15	-1			-5	9
		✕ WEAR		+1				1
9	12 London	① GREAT	10					10
	65 Chelmsford	① TGV	10					10
		① WEAR	10					10
10	42 North Walsham/Sheringham	① COLIN	15					15
	35 Downham Market/Swaffham	① WEAR	15					15
11	16 Tilbury	① TGV	10	+3	+3		-1	15
	04 The West	① GREAT	10			-3	-1	6
		① WEAR	10			-3	-1	6
		✕ COLIN		+1	+1	+1		3
12	56 Felixstowe/Harwich	① ODE	30					30
	32 Spalding							
13	43 Norwich	① ODE	11			-1		10
	22 Hertford/Hitchin	① COLIN	10	-5				5
		③ GREAT	5			-1	+5	9
		④ TGV	4	+1	+1			6

14	64 Braintree/Maldon	① WEAR	16			+2		18
	03 The North	② TGV	9		-2			7
		③ COLIN	5					5

ODE submitted an entry for run 10, but seemed to have got confused between Downham Market and East Dereham. Whatever the cause, he was trying to reach destination 46 rather than 35. Whatever the reason, his entry could not be accepted.

Round 8 builds

Graystone Railways Entertain Another Territory (GREAT) (Michael Graystone, Brown)

J11 - Clacton, T28 - O31, T28 - Kings Lynn, Y4 - W3.

-10 (builds) +3 (towns) +2 (ODE) +1/-12 (TGV) -1 (COLIN) = -17

Woodbridge Expressways Are Rampant (WEAR) (Kevin Lee, Red)

None.

Opening Directly East (ODE) (John Marsden, Orange)

K12 - K11 - J10 - Clacton, J10 - I10 - Frinton, J25 - K26 - K28 - L28, S18 - S19.

-10 (builds) -2 (GREAT) -2 (COLIN) = -14

Theophilus' Goods Vehicles (TGV) (Simon Robertson, Blue)

U28 - P30 - Fakenham.

-6 (builds) +12/-1 (GREAT) = +5

Cromer Ongar London Inter Network (COLIN) (Colin Sharpe, Black)

None.

+1 (GREAT) +2 (ODE) = +3

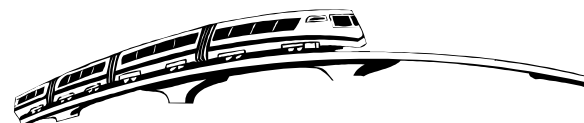
Scores

	Runs:	8	9	10	11	12	13	14	Builds	Score
COLIN	118	20	-	15	3	-	5	5	+3	169
TGV	78	-	10	-	15	-	6	7	+5	121
WEAR	69	1	10	15	6	-	-	18	-	119
GREAT	107	-	10	-	6	-	9	-	-17	115
ODE	70	9	-	-	-	30	10	-	-14	105

Round 9 Runs

15.	41 - 63	Cromer/Wells to Clacton/Tollesbury
16.	54 - 11	Stowmarket/Sudbury to London
17.	61 - 34	Burnham/Frinton to Kings Lynn
18.	45 - 05	Lowestoft to the West
19.	21 - 15	Hatfield/Ongar to London
20.	26 - 36	Ely/Huntingdon to Fakenham/Hunstanton
21.	51 - 01	Diss/Thetford to any seaport

Runs	Builds
Enter up to 4	Up to 10 points excluding payments to rivals





RAILWAY RIVALS 2052-IP

Every destination is now connected.

ROUND 6

Israel and Palestine [15 points for these builds]
Transit Across Israel and Palestine to Syria (TRIPS) (Tony Bromley, Red)
S14 - Jerusalem East, P24 - Netanya, El Quineitra - F85 - G86 - H85, P42 - P43.
80 +1 (BROOKS) -1 (TOT) +1/-4 (FATAH) = 77

Buses Running On Own Kinetic Servomechanism (BROOKS) (Simon Brooks, Orange)
Jerusalem West - Jerusalem East, N21 - L20 - Herzliyya, H13 - F12, R25 - R30.
71 -1 (TRIPS) +1/-2 (TOT) +6 (FATAH) = 75

Tours of the Old Testament (TOT) (Bob Coull, Black)
D9 - D6 - A5, Z31 - A76, D78 - E78, M6 - Q4, P4 - Yatta.
70 +1 (TRIPS) +2/-1 (BROOKS) = 72

Friendly Arab Trains Around the Holy Land (FATAH) (Jim Reader, Yellow)
N33 - M36 - Haifa, P36 - P43, Q17 - P17, P38 - Akko, P41 - Nahariyya,
R14 - Jerusalem West - Bethlehem.
39 +4/-1 (TRIPS) -6 (BROOKS) = 36

Round 7 Runs

1.	46 - 62	Rehovot to Beersheba
2.	35 - 21	Tulkarm to Nahariyya
3.	44 - 36	Tel-Aviv-Jaffa to Nablus
4.	24 - ❶1	Haifa to Lebanon
5.	55 - 64	Hebron to Ashqelon
6.	13 - 56	Butmiye to Yatta
7.	14 - ❷2	Zefat to Syria

TRIPS was 4 short on his builds, because he counted crossing the international border as +2, but that's only true where there is a river along the border, which applies to Jordan.

Runs	Builds
Enter up to 4	Up to 10 points excluding payments to rivals



RAILWAY RIVALS 2065-F

No shortages this time.

ROUND 3

South Scotland [15 points for these builds]
Boring Old Routes Demand Esoteric Rolling Stock (BORDERS) (Steve Ham, Pink)
H20 - E22, E58 - E60 - F60 - Peebles - F62 - E63 - Galashiels - E67, H55 - Lanark.
28 -2 (HOOTS) -1 (TGV) +4/-3 (GITCO) = 26

Ode Delays Inevitable (ODI) (John Marsden, Orange)
Kilmarnock - Cumnock, Paisley - K45 - Greenock, Cumnock - M10 - M11.
52 +12 (towns) = 64

Horrid Orange Original Trains For Sassenachs (HOOTS) (Jim Reader, Yellow)
H20 - D22 - Gretna - Carlisle, G55 - Lanark - C53, Coatbridge - L53.
20 +12 (towns) +2 (BORDERS) -5 (GITCO) = 29

Theophilus's Goods Vehicles (TGV) (Simon Robertson, Blue)
Ayr - N5 - M5 - L5 - K5 - K4 - Girvan - F5, G57 - G58 - I59 - I61.
34 +6 (towns) +1 (BORDERS) = 41

Gretna Intention Transfixes Company Officials (GITCO) (Tony Sait, Green)
N64 - Dunbar, Edinburgh - M60 - L59 - L56 - M56 - M55 - L54 - Coatbridge, M26 - L26.
38 +6 (towns) +3/-4 (BORDERS) +5 (HOOTS) = 48

GITCO - all: Right, you've had your 6 point head-start, now watch your backs!

Jim, when you build through a town, can you please mention it in your builds, even if it's in a straight line with the build before and after.

Builds
Up to 17 points excluding payments to rivals



RAILWAY RIVALS 2066-G

KILT is half over the Forth Bridge.

ROUND 2

Central Scotland [12 points for these builds]
Graystone Railways Entertain Another Territory (GREAT) (Michael Graystone, Brown)
K13 - M14 - Alloa, G6 - Coatbridge - A9, L13 - M13.
20 +12 (towns) -3 (HOOTS) = 29

Perth Expressways Are Rampant (PEAR) (Kevin Lee, Pink)
C76 - B75 - A76 - N35 - Cupar - N30 - L29 - Buckhaven.
20 +12 (towns) = 32

Horrid Orange Original Trains For Sassenachs (HOOTS) (Jim Reader, Yellow)
K13 - L13 - Stirling - B51 - E53 - E57.
20 +6 (towns) +3 (GREAT) = 29

Kirkcaldy's Inter-Local Trains (KILT) (Don Shailer, Black)
G16 - G15 - H14 - Grangemouth, G15 - E14 - Bathgate, D20 - Forth Bridge.
26 +12 (towns) = 38

Builds
Up to 16 points excluding payments to rivals





RAILWAY RIVALS 2073-DC

GITCO picks up the wrong build allowance.

ROUND 2

Devon and Cornwall {16 points for these builds}
Graystone Railways Entertain Another Territory (GREAT) (Michael Graystone, Brown)
U33 - U32 - W31 - W26 - S24 - Tavistock.
23 +6 (towns) = 29

Gorma Is Tony's (Spouse's Cornish Origin) (GITCO) (Tony Sait, Green)
U33 - W32 - W26 - S24 - R24.
23

Cornwall Operations Linking Internal Networks (COLIN) (Colin Sharpe, Blue)
W33 - W31 - X30 - X23 - V22.
26

The build allowance at the top of the report is the number of builds points for the reported builds, while the number at the bottom is the number to use for the next round. No mistakes are possible next time as they are the same, but you need to look at the end of the report for the allowance for the coming round.

Builds
Up to 16 points excluding payments to rivals



RAILWAY RIVALS 2046-DC

No room for mistakes.

GAME OVER

1st	Jim Reader	YOKE	500
2nd	Tony Bromley	TRADE	473
3rd	Don Shailer	PASTIE	282

Jim Reader (YOKE, 1st): Having bodged my first game of this big time, I was pretty determined not to make any basic errors this time. The big surprise was reaching Torquay and the towns on the south coast unchallenged in the late building stages, which certainly helped my score in the early rounds. This is a tough map, as the strategy itself is very clear, but there is little room for making any errors. Thanks for the game.

I know what Jim means about little room for error. Colin is convinced his first round in the latest game has already found one of those errors, but we shall see.

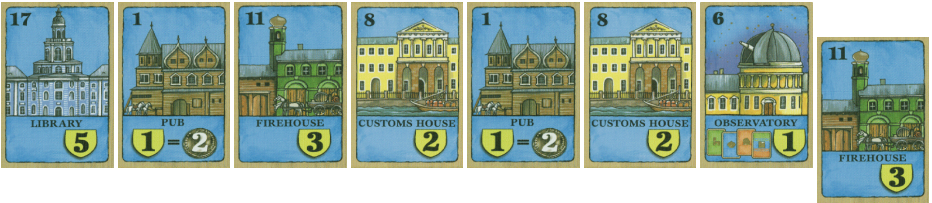


SAINT PETERSBURG 1

Mike buys four cards, every one else just one.

PHASE 4-W

Mike	Geoff	Sharon	Rob
+ Lumberjack	+ Gold Miner	+ Lumberjack	+ Gold Miner
+ Ship Builder	✗	✗	✗
+ Market	✗	✗	✗
+ Market	✗	✗	✗
✗			



Players	Rubles	VPs	Worker	Building	Aristocrat	Leads Phase	Cards
Geoff	21	6	15r + 0v	0r + 3v	6r + 0v	Aristocrat	18
Sharon	25	8	18r + 0v	3r + 8v	4r + 0v	Trading	25
Rob	23	9	21r + 0v	0r + 5v	5r + 2v	Building	6
Mike	27	6	24r + 1v	0r + 3v	4r + 0v	Worker	7

Players	Cards in hand (Limit)	Cards in play
Geoff	Warehouse Manager, Admiral, Minister of Foreign Affairs	Lumberjack, Gold Miner x 3, Shepherd, Market x 2, Warehouse, Observatory, Administrator, Secretary, Jester (assigned to Market)
Sharon	Library, Warehouse Manager, Pope	Lumberjack x 2, Shepherd, Ship Builder, Weaving Mill, Library, St.Isaac's, Secretary
Rob	Fur Shop, Builder, Black Market	Lumberjack, Gold Miner x 2, Shepherd, Fur Trapper x 2, Ship Builder, Customs House, Firehouse, Warehouse Manager, Senator
Mike	Chamber Maid, Black Market	Lumberjack, Gold Miner, Shepherd, Fur Trapper, Ship Builder x 2, Wharf, Market x 3, Author x 2, Administrator

Discard pile: Shepherd, Ship Builder, Customs House, Hospital, Theatre, Academy, Potjemkin's Village (3/8), Warehouse Manager

Orders required
Round four Building phase led by Rob





SCEPTRE OF ZAVANDOR 1

The last of the Artifacts
come out on sale.

ROUND 14

Actions

- Lyndon Auctioned a Cloak of Camouflage for 80 and got it {80} - 40 value knowledge chip placed in pentagon - David loses an Opal, Tim loses an Emerald, everyone else loses a Sapphire
- Started researching knowledge of Accumulation {2}
- David Auctioned a Magic Wand for 60. Kevin joined at 71 and dropped out at 82. David got it for 82 reduced to 77 {77}
- Kevin Auctioned a Magic Wand for 60 and got it reduced to 50 {50}
- Geoff Auctioned the Phoenix for 120 and got it reduced to 110 {110}
- Sharon Increased knowledge of 9 Sages to level 2 {6} - gained two Emerald cards
- Bought an Emerald {21}
- Tim Increased knowledge of Gems to level 2 {4}
- Bought an Emerald {27}

PO	Name	Character	Gems	Active/Limit	Dust	Energy Cards	Hand Limit
1	Lyndon	Elf	o:2{1} s:2 d:1	5/5	15	s:3 e:4 d:1 r:5	6
2	Geoff	Fairy	s:1 d:4	5/8	2	s:2 d:1 D:1	8
3	David	Witch	o:2 s:4 e:2	8/9	9	S:1 e:2	9
4	Kevin	Mage	s:1 d:2	3/7	10	s:1 d:2 r:3	11
5	Sharon	Kobold	s:3 e:5	8/8	61	s:3 E:2 e:5	9
6	Tim	Druid	e:2	3/7	0	e:3	7

PO	Name	Artifacts	Knowledge	New K Chips	VPs/Gems
			Ge En Fi Sa Ar Ac		
1	Lyndon	RS CP CP CP EL CF CC	- 4 - 4 4 1	30/35	34/6
2	Geoff	RS EL MC MW Ph	4 - - 4 - 3	30/35/40	31/9
3	David	SB MB MC MC MW	4 - - 2 4 4	35/40	28/10
4	Kevin	RS CB EL MW CF TA	- 3 - 4 4 -	30/35/40	28/5
5	Sharon	SB CB MB MM MM	3 - - 2 1 3	25/30	21/13
6	Tim	SB CB MB MM	1 - 4 - - -	20/25/30/35	14/6

Artifacts on offer: 1 Magic Wand, 2 Cloaks of Camouflage, 2 Talismans

David wanted to auction a Sentinel, but he mentioned that he would get a 40 discount for his two Marks of Charisma. As there is only a discount of 10 for each of these rather than 20, I decided not to initiate his auction because his expectations would not be met.

We only have five Artifacts on offer because that's all that is left.

Orders required
Round fifteen gem dealing, knowledge improvement, auctions and bids



SCEPTRE OF ZAVANDOR 2

It's a Spellbook and
a Crystal Ball this time.

ROUND 5

Actions

- Lyndon Started researching knowledge of 9 Sages {23} - gained two Sapphire cards
- Kevin Sold 2 Opals {6}
- Auctioned a Spellbook for 20. Simon joined at 21. Kevin dropped out at 24. Simon got it for 25 {25}
 - Auctioned a Spellbook for 20 and got it {20}
- Michael Auctioned a Crystal Ball for 20 and got it reduced to 10 for Artifacts discount {10}
- Roger Sold an Opal {5}
- Bought a Sapphire {20}
- Marcus Increased knowledge of Energy Flow to level 3 {12}

Simon Passed

PO	Name	Character	Gems	Active/Limit	Dust	Energy Cards	Hand Limit
1	Lyndon	Kobold	o:3 s:4	7/7	23	S:1 s:2	6
2	Michael	Mage	o:2 s:2	4/5	15	s:4	9
3	Simon	Elf	o:3 s:1	4/5	19	s:1	4
4	Roger	Druid	o:1 s:3	4/5	2	s:4	5
5	Kevin	Witch	o:1 s:3	4/5	8	s:4	4
6	Marcus	Fairy	o:3 s:2	5/5	19	s:6	7

PO	Name	Artifacts	Knowledge	New Knowledge Cost	VPs/Gems
			Ge En Fi Sa Ar Ac		
1	Lyndon	-	- - - 1 - 4	25/30/35/40	9/7
2	Michael	SB CB	- - - - 4 -	20/25/30/35/40	8/4
3	Simon	SB RS RS	- 3 - 1 - -	25/30/35/40	7/4
4	Roger	RS	- - 4 - - -	20/25/30/35/40	7/4
5	Kevin	SB	4 - - - - -	20/25/30/35/40	7/4
6	Marcus	CB	- 3 - 2 - -	25/30/35/40	6/5

Artifacts on offer: 1 Crystal Ball, 1 Magic Belt, 2 Magic Mirrors, 2 Elixirs

Orders required
Round six gem dealing, knowledge improvement, auctions and bids



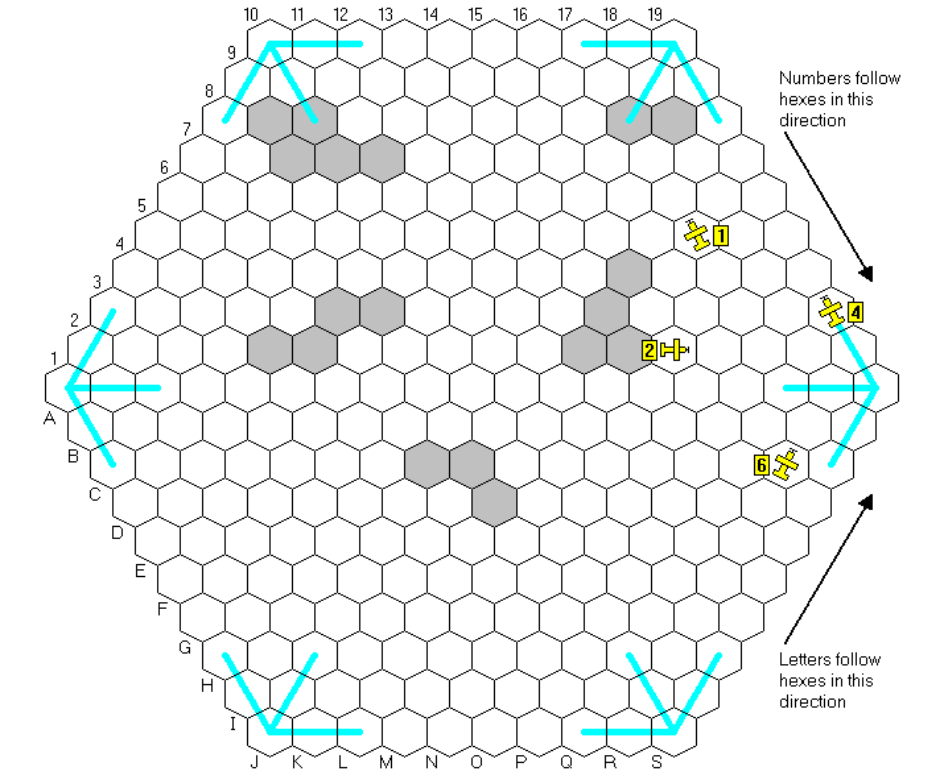


SOPWITH T-340-FW

No hits and no damage.

ROUND 10

Pilot	Starts	Moves	Ends	A:D:P
1 <i>Not Only But Also</i> Don Shailer	O16-NW	A, RS, A {Airfield: A1}	M17-NW	09:05:08
2 <i>Mad Ferret</i> Tim Franklin	K13-SW	LT-fL, LT-fA, A {Airfield: A10}	N15-E	04:11:01
4 <i>The Brown Baron</i> ♠ Michael Graystone	S18-NW	RS, A, A {Airfield: S19}	Q19-NW	05:08:09
6 <i>Lord Flashheart</i> ♠ Joakim Spångberg	Q13-E	LT-fA, A-fA, RS-fA {Airfield: J1}	R16-NE	03:08:10



The clouds moved south east. The Brown Baron flew over his airfield but decided it wasn't the best of times to stop off, for tea, ammunition or anything else.



6 NIMMT! 13

How will you luck be
in game number 13?

NEW GAME

Most of these players come from the last game, but we have some new blood as well.

John Colledge	Dunroch, 24 Brunstane Bank, Edinburgh, EH15 2NR
Bob Coull	1 Lingfield House, Lancaster Street, London, SE1 0RW
Michael Graystone	2 Grovelands Road, St.Paul's Cray, Orpington, Kent, BR5 3EF
Kevin Lee	149 Ludlow Road, Woolston, Southampton, SO19 2ER
Jim Reader	55A Yamate-Cho, Naka-ku, Yokohama 231-0862, Japan
Don Shailer	8 Clifton Green, Aylesbury, Bucks, HP19 3JW
Colin Sharpe	94 Surrey Grove, Sutton, Surrey, SM1 3PN
Mark Stretch	41 Burma Close, Evesham, Worcestershire, WR11 1GZ

The starting positions for the four hands are shown below. You have your own sheets listing the cards that you have in each hand. Keep track of which cards you have played, because if you try to play a card that you no longer have, I'll pick one at random and, if I remember, give you a free penalty point.

Hand 1 (1-104)

Hand 2 (1-104)

Hand 3 (1-84)

Hand 4 (1-84)

Hands one and two are using the full deck of 104 cards, so some cards will never be seen. The other two hands use every card from 1 to 84. Play couldn't be simpler. Select one card from each hand and tell me what it is. I'll play them in numerical order and usually in the right places. Avoiding penalty points is never so simple, but by the time we get to those all you can do is cross your fingers and see whether you got through the round unscathed.

Orders required

Round one - cards for each hand



NEWS FROM THE ROCK

<http://www.fwtwr.com/>



This is the section that provides news of the Internet sibling of this zine.

- ✧ It's been a very slow month for finishers and starters, but I'm hoping to find time to do some work on the web games before too long, which may revive interest. One thing I shall probably do is drop the game fee back down to £1 a game. The idea of increasing it was to justify its continued existence alongside the business, but that's going to happen anyway as it's something that I want to keep doing. That may encourage some people to join in again, and given the gap since the last game started, nobody is going to feel overly frustrated at missing some deadline for the reduced fees.

- ✧ Here are the current web ratings for active players with a rating of 2.0 or more. People are included if they have competed five games.

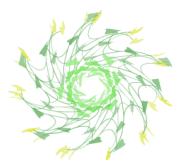
- Mike Eddleston	4.000
- Lew Stansby	3.753
▲ David Hilbert	3.000
▲ Roger Krueger	2.882
▼ Victor Cronshaw	2.879
▼ Rob Thomasson	2.833
- Michael Bakken	2.750
- Peter Hawkins	2.613
▲ Willem Moene	2.478
- Gareth Lodge	2.185
- Michael Longdin	2.136
- Peter Beck	2.079
▲ Mick Haytack	2.053

- ✧ Completed games and winners:

1870 e630 {1870-A21}	Roger Krueger
Acquire e741 {Powers}	Michael Graystone
Acquire e743	Alan Tabor

- ✧ New games and start dates:

Puerto Rico e753	Jun 20th
Acquire e754	Jun 21st



PREVIEW

Bob Coull has taken the last space on the Space Blast list. As that's due to start next time I'd better get it sorted out!



Canal Mania has also filled up and is scheduled for the month after. That may turn out to be optimistic, given that we're in the USA for a week and then in Reading at the end of the month for the GenCon US and UK conventions respectively. We'll play to the second edition map and rules, and I'll include details for the players in case anyone would be playing from the first edition.

Phoenicia has joined the waiting lists, being a simpler game in the style of Outpost. I should make less of a hash of this than I have been doing with the Sceptre of Zavandor. The key to such avoidance is preparation, or course, and while I thought I was up to speed with Sceptre, it was clear that a number of things had not embedded themselves in my mind as well as they should have done.

Here's the plan for new games due to start in the next few issues.

#146:	1856, Puerto Rico, Space Blast
#147:	Bus Boss {Netherlands}, Canal Mania, Puerto Rico

ZINES RECEIVED

A summary of zines that I've received recently.

Date	Zine/Issue
Jun 18th	Ode 285
Jun 21st	...mais n'est-ce pas la gare? 71
Jun 22nd	Variable Pig 109
Jun 25th	The Abyssinian Prince 311
Jul 6th	Save Your XXs for Me 42

RATINGS

This is the list of subscribers with a rating of 2.0 or greater. People are included if they have completed five games.

- David Smith	3.500
- Mark Frueh	3.200
- Simon Robertson	3.159
▲ Lyndon Gurr	3.156
- Tony Bromley	3.000
- Geoff Hardingham	3.000
- Lionel Robbins	3.000
- Marcus Pratt	2.698
- Steve Thomas	2.563
- Colin Sharpe	2.250
- Michael Graystone	2.212
- Rob Thomasson	2.185
- Stephen Webb	2.167

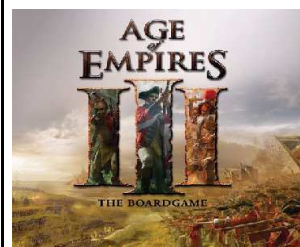


Heron
Games



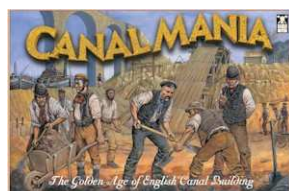
Heron Games will be at GenCon UK in Reading
Aug 30th - Sep 2nd

Here is a selection of recent arrivals. Visit the web site to see the full story on what is one offer - www.herongames.com. The new web site should go live some time this month.



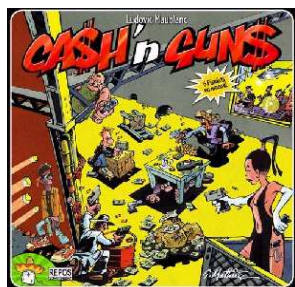
£33.50

Age of Empires III is the first release from Tropical Games, risen from Eagle Games.



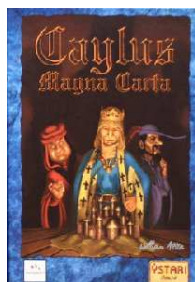
£22.50

The second edition of Canal Mania fixes some of the perceived issues of balance. An upgrade kit for the first edition is also available for £10.00.



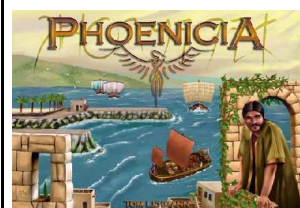
£22.50

Great party fun, now available with English rules in the box.



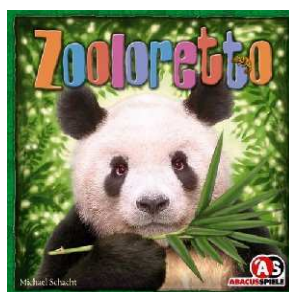
£15.50

The card game version of Caylus, simpler yet still challenging.



£27.00

The new game from Tom Lehmann, taking the Outpost concept and simplifying it.



£20.00

Game of the Year for 2007, Zooloretto takes the ideas from the card game Coloretto and takes them to the zoo.

WHO PLAYS WHAT

Peter Berlin	1829-C20, 1829-V21, 18EU-G23	Willem Moene . . .	1800-I20, 1830-F21, 1830-L23, 1835-B21, 1856-D22, 1856-M22, 1861-B23, 1870-O20, 1870-K23, 18Kaas-P23, Acq47, OP25, OP26, PR7
Tony Bromley	RR-2052-IP	Marcus Pratt	AoS1, OP25, OP26, Sceptre 2
Simon Brooks	Acq47, BA16, BB-300-KYR, GS7, RR-2052-IP	Jim Reader	6n13, BA16, BA17, BB-300-KYR, BB-301-CRO, BB-304-EAN, GS7, OP25, OP26, PR5, PR6, PR7, RR-2047-DX, RR-2052-IP, RR-2065-F, RR-2066-G, Sop340
Martin Butcher	1829-C20	Lionel Robbins . . .	1829-V21, 1870-K23, 18EU-G23, PR6, RR-2047-DX
John Colledge	6n13, Acq47, Acq48	Peter Robbins	RR-2028-DC
Bob Coull	6n13, BB-300-KYR, BB-304-EAN, RR-2052-IP	Tony Robbins	1837-G21, 1856-D22
Simon Cutforth	1870-O20, Sceptre 2	Simon Robertson . .	BB-300-KYR, RR-2051-EA, RR-2065-F
Tim Franklin	1826-E22, 1830-L23, 1850-R22, BA16, RR-2028-DC, Sceptre 1, Sop340	Tony Sait	1830-F21, 1835-B21, 1856-M22, 18Kaas-P23, PR6, PR7, RR-2065-F, RR-2073-DC
Mark Frueh	18EU-G23	Don Shailer	1829-C20, 6n13, BB-304-EAN, GS7, RR-2066-G, Sop340
Michael Graystone	6n13, Acq47, Acq48, BB-299-NWA, BB-300-KYR, RR-2028-DC, RR-2051-EA, RR-2066-G, RR-2073-DC, Sop340	Colin Sharpe	6n13, Acq47, Acq48, Acq49, BB-299-NWA, BB-304-EAN, RR-2047-DX, RR-2051-EA, RR-2073-DC
Lyndon Gurr	1826-E22, 1850-R22, 1856-M22, 1861-B23, 1870-K23, 1899-Z21, 18Kaas-P23, Acq49, OP26, Sceptre 1, Sceptre 2	John Shelley	1826-E22, 1830-L23, 1835-B21, 1856-D22, 1870-K23, 1899-Z21
Steve Ham	BA16, BB-299-NWA, GS7, RR-2047-DX, RR-2065-F	David Smith	1829-C20, OP25, Sceptre 1
Geoff Hardingham	1837-G21, 1861-B23, OP26, StP1, Sceptre 1	Don Smith	1826-E22, 1830-F21, 1835-B21, 1837-G21, 1870-O20, 1870-K23, 1899-Z21, 18EU-G23
Alan Harvey	1800-I20, 1825-L21, 1850-R22, 1899-Z21, 18Kaas-P23	Joakim Spångberg . .	BA17, BB-301-CRO, GS7, Sop340
Mike Head	1830-F21, 1830-L23, 1856-D22, 1856-M22	Allan Stagg	BA17, PR5
John Hopkins	1829-V21	Mark Stretch	1830-F21, 1835-B21, 1861-B23, 6n13
Mike Hutton	1825-L21, 1829-V21, 1861-B23, AoS1, BB-301-CRO, StP1	Brian Tappenden . .	PR5
Sharon Khan	AoS1, BA16, OP25, StP1, Sceptre 1	Paul Tappenden . .	PR5
Roger Krueger	1870-O20	Rob Thomasson . . .	1829-V21, 1856-M22, BB-301-CRO, PR6, StP1
Kevin Lee	6n13, Acq49, BA16, BA17, BB-299-NWA, GS7, OP25, PR7, RR-2047-DX, RR-2051-EA, RR-2066-G, Sceptre 1, Sceptre 2	Roger Trethewey . .	BA17, BB-301-CRO, GS7, Sceptre 2
Michael Longdin . . .	AoS1, Sceptre 2	Stephen Webb	1826-E22, 1837-G21, 1850-R22, 1870-O20, 18EU-G23
Richard Lunn	1830-L23, 1856-D22, Acq48, BA17	Tony Wilcock	Acq49
John Marsden	BB-299-NWA, BB-1304-EAN, RR-2051-EA, RR-2065-F		



OUTSIDE EDGE

FOR WHOM THE DIE ROLLS is brought to you by:

Keith Thomasson, 14 Stepnells, Marsworth, Near Tring, Herts, HP23 4NQ

CONTENTS

◇ Games ◇	1861-B23	34	RR-2047-DX	61
*****	1870-O20	36	RR-2051-EA	62
◇ New ◇	1870-K23	38	RR-2052-IP	64
18Kaas-P23	1899-Z21	40	RR-2065-F	64
6 nimmt! 13	18EU-G23	42	RR-2066-G	65
Bus Boss 304-EAN	Acquire 46	44	RR-2073-DC	66
*****	Acquire 47	45	Saint Petersburg 1	67
	Acquire 48 (Powers)	46	Sceptre of Zavandor 1	68
1800-I20	Acquire 49	47	Sceptre of Zavandor 2	69
1825-L21 (Unit 3)	Age of Steam 1	48	Sopwith T340FW	70
1826 E22	Breaking Away 16	50	*****	
1829-C20 (South)	Breaking Away 17	51	◇ Bits and Bobs ◇	
1829-V21 (North)	Bus Boss 299-NWA	52	Board2Pieces	4-5
1830-G20	Bus Boss 300-KYR	53	Deadlines	Below
1830-F21	Bus Bos 301-CRO	55	Heron Games	74
1830-L23	Golden Strider 7	44	News from the Rock	72
1835-B21	Outpost 25	56	Preview	73
1837-Q21	Outpost 26	57	Ratings	73
1850-R22	Puerto Rico 5	58	Waiting Lists	2
1856-Y19	Puerto Rico 6	59	Who Plays hat	75
1856-D22	Puerto Rico 7	60	Zines Received	73
1856-M22	RR-2046-DC	66		

DEADLINES

Monday August 6th 2007
 18xx Games - Wednesday August 1st

Future main deadlines: September 12th October 10th November 7th

E-mail orders must be sent as plain text messages. Do not send as e-mail attachments.
 Unreadable submissions will be treated as No Move Received.