

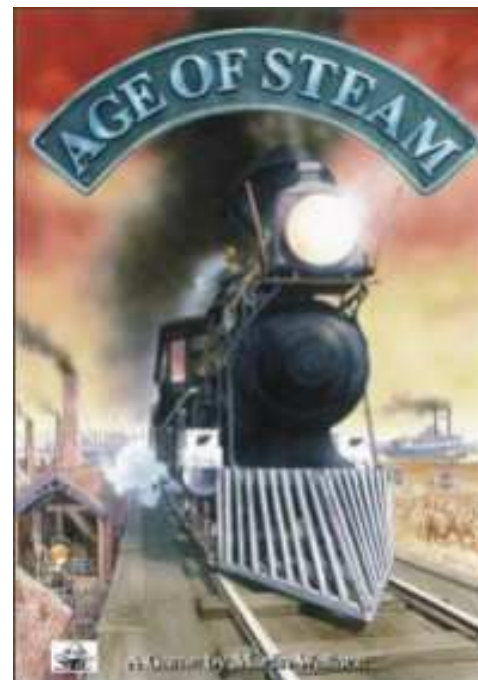
FOR WHOM THE DIE ROLLS

February 2007

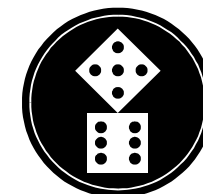
Published by Keith Thomasson

Issue 140

This page has been added to the PDF copy so that reports that appear on facing pages in the paper copy are shown side-by-side.



£2.00



INSIDE STORY

This is FOR WHOM THE DIE ROLLS #140, a game playing magazine for game players, published by Keith Thomasson, 14 Stepnells, Marsworth, Near Tring, Herts, HP23 4NQ. This issue costs £2.00 (including postage).

E-mail: Keith@Thomasson.com

Web site: www.fwtwr.com

Subscription payments can be sent via PayPal to Keith@Thomasson.com

Please specify the currency for international payments as GBP

WAIT

① means that number of players needed. ⇨③ means up to that number needed. ⇨ means there is no limit. ✱ means a list is full.

Games starting in this issue...

Age of Steam Mike Hutton, Sharon Khan Michael Longdin, Marcus Pratt
Bus Boss Mike Hutton, Jim Reader, Joakim Spångberg, Rob Thomasson, Roger Trethewey (Croydon)
Sceptre of Zavandor Simon Cufforth, Lyndon Gurr, Kevin Lee, Michael Longdin, Marcus Pratt, Roger Trethewey

Games starting in the next issue...

✱ 1861 Mark Stretch, Geoff Hardingham, Lyndon Gurr, Mike Hutton, Willem Moene (The first stock round will be run by e-mail)
✱ Railway Rivals Tony Sait, Jim Reader, John Marsden, Steve Ham, Simon Robertson (South Scotland)

You should own these games or be familiar with their rules...

② 1895 Steve Thomas
⇨① 18EU Stephen Webb, Don Smith, Peter Berlin, Mark Frueh (The minor company auctions will be run by e-mail for this game)
⇨② 6 nimmt! Colin Sharpe, Jim Reader, Michael Graystone, Kevin Lee, Don Shailer, Bob Coull
⇨① Acquire [Standard] Tony Wilcock, Kevin Lee, Colin Sharpe, Lyndon Gurr
⇨① Industrial Waste Sharon Khan, Mike Head, Marcus Pratt
⇨⑦ Outpost Willem Moene, Lyndon Gurr, Marcus Pratt

I supply everything you need for these...

②/⑧ Battle! Michael Graystone, Allan Stagg, Steve Ham, Marcus Pratt
⑤ Breaking Away Steve Ham
⇨③ Bus Boss Don Shailer, Bob Coull (East Anglia)
⇨③ Golden Strider Steve Ham, Jim Reader, Roger Trethewey, Kevin Lee, Simon Brooks, Joakim Spångberg, Don Shailer
✱ Railway Rivals Michael Graystone, Kevin Lee, Don Shailer, Jim Reader (Central Scotland)
⇨③ Railway Rivals Bob Coull, Jim Reader (most likely Jim Reader's new Kyushu map)
⇨② Space Blast Steve Ham, Joakim Spångberg, Don Shailer, Jim Reader

£1 fee for each game, unless otherwise stated, subsidising the cost of the zine

START

Welcome to issue #140. This month's cover recognises the arrival of Age of Steam in these pages. There is quite a bit to talk about Age of Steam on the web at the moment, so if you're not up to speed...

The game has been printed in two editions, with both sold out. Winsome Games have said that Warfrog, who published the two editions, are no longer able to produce board games, without saying why, and as a result Winsome have arranged for a new version to be published in 2008 with a German company. Martin Wallace, the Age of Steam designer, says in return that Winsome don't have the rights to do this. Furthermore, he is in discussion with Mayfair Games about them producing the game. The rules are going to get changed for this version, to make it more accessible to a wider audience. I've heard that there will probably be optional advanced rules in the game so that people can play using the current Age of Steam rules set, but as Winsome have said nobody can do this because it is their intellectual property, that remains to be seen.

That's not all. Following the demise of Eagle Games last year, Glenn Drover announced that his new company Tropical Games, will be producing a new version of Railroad Tycoon, which is Age of Steam 'Lite', however much people try to deny this.

So, counting Railroad Tycoon, there are currently two major editions of the game, but there could be three more in the next year or so. Confused? Who cares, just take the new maps that come with the new games and play to whatever set of rules you prefer.

After all, with only 14 official maps, 17 others sanctioned and at least 27 more I know of in development, we need more maps. It gets more like Railway Rivals every day...

The latest issue of Bloodstock arrived with the news that Mick Haytack has decided to fold the zine later this year, probably in about five or six issues. Any games still running will continue by email, or by post where the players don't have email, but without the zine. I'm sure he'll find plenty to do with the time he finds when not producing the zine. Thanks for Bloodstock over the years, Mick, and advance congratulations on getting to issue 200 :-)

Perhaps more significant than issue 200 is issue 300 - a target not achieved by many. My brother Rob's Minstrel is currently about to deliver issue #298, so congratulations will be due when the triple hundred rolls around. I'm not halfway there yet, but who knows, if enough people keep the faith we could get there yet. It doesn't seem that long ago that my 100th issue rolled out, and I'm 40 issues closer to the next hundred... ✱

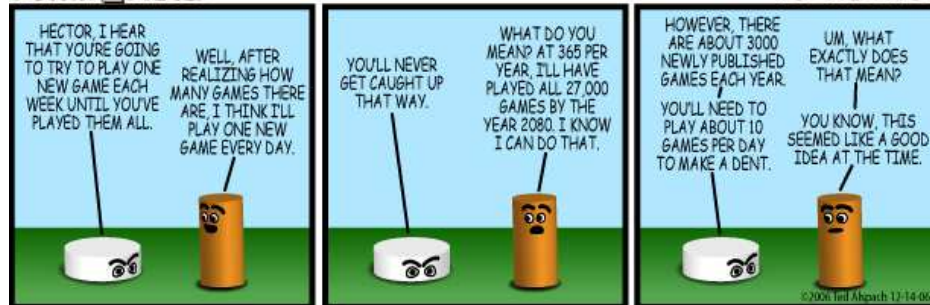
BOARDPIECES

BY TED ALSPACH



BOARDPIECES

BY TED ALSPACH



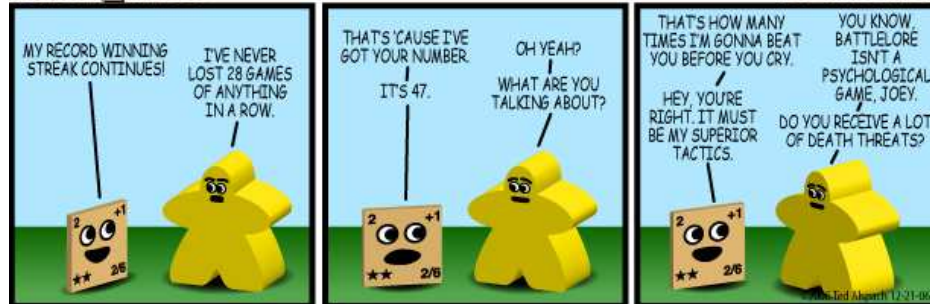
BOARDPIECES

BY TED ALSPACH



BOARDPIECES

BY TED ALSPACH



BOARDPIECES

BY TED ALSPACH



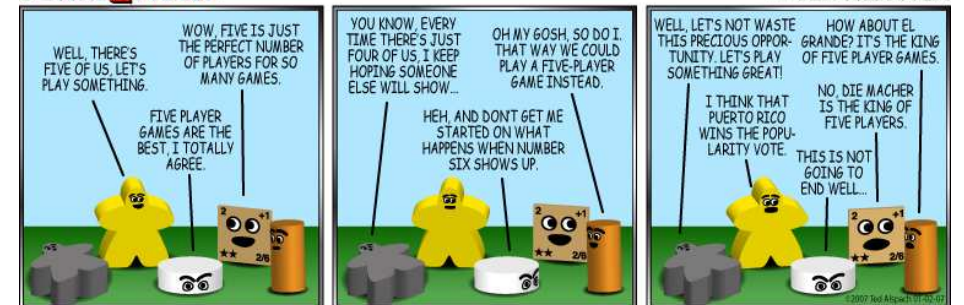
BOARDPIECES

BY TED ALSPACH



BOARDPIECES

BY TED ALSPACH



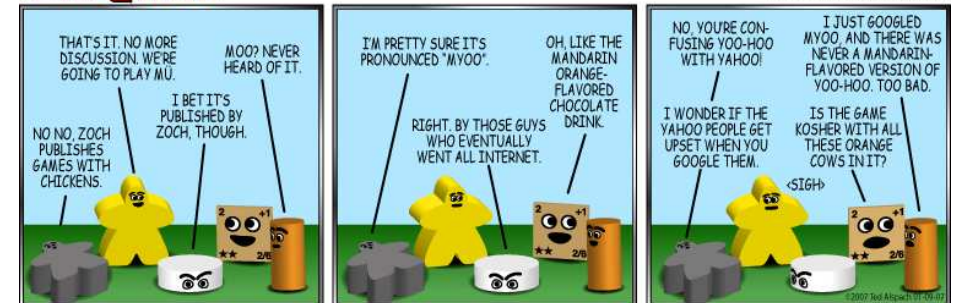
BOARDPIECES

BY TED ALSPACH



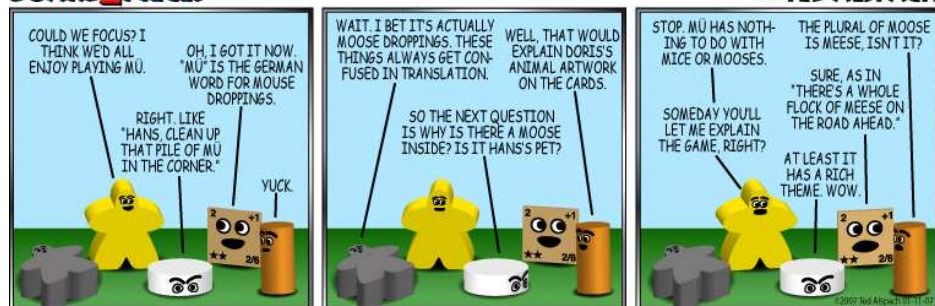
BOARDPIECES

BY TED ALSPACH



BOARD2PIECES

BY TED ALSPACH



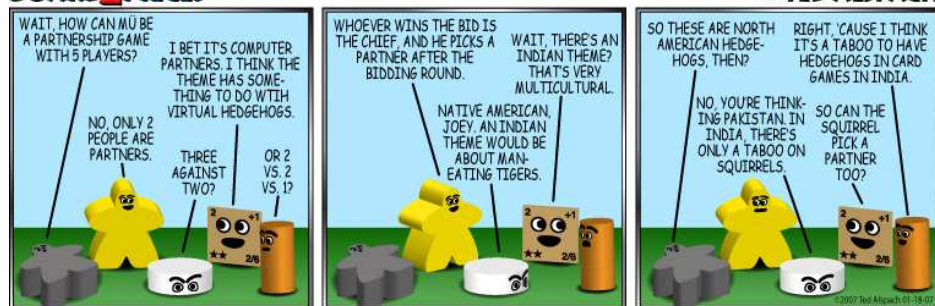
BOARD2PIECES

BY TED ALSPACH



BOARD2PIECES

BY TED ALSPACH



BOARD2PIECES

BY TED ALSPACH



1800-120	The C&S share price should have ended up at 60E.	SR9
----------	--	-----

Stock Round 9

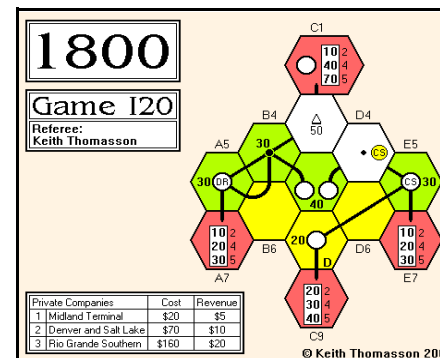
Willem	Alan
+ D&RGW pool	+ C&S pool
x	x
Priority for SR10	

Cash Flow	b/f	SR9	c/f	Value	%	Certs
Alan Harvey	124	-60	64	964	48.9▼	6
Willem Moene	167	-90	77	1,007	51.1▲	4

Portfolio	PCs	C&S	D&RGW
Alan Harvey	C&S Bond	7P	2
Willem Moene	D&RGW Bond	-	7P

Bank (new)	-	-
Bank (pool)	3	1
Price	60E	90E
Company credit	52	474
Tokens	2	2
Trains	4	3
Bank cash: 3,053	Certificate limit: 7	Trains: 1 x '5', 2 x '2E'...

Tiles	Tile number/Availability							Two Operating Rounds between Stock Rounds						
Yellow	3/1	4/2	5/2	6/1	7/-	8/2	9/2	58/2						
Green	12/-	16/1	18/1	19/1	23/1	24/1	25/1	26/1	27/1	28/1	29/1	59/-		
	800/-	802/1												



Orders required for the following rounds *By the early deadline*
 OR11, OR12 *Adjudication can pause between rounds if requested*



1825-L21

The three major companies
are fully subscribed.

SR5

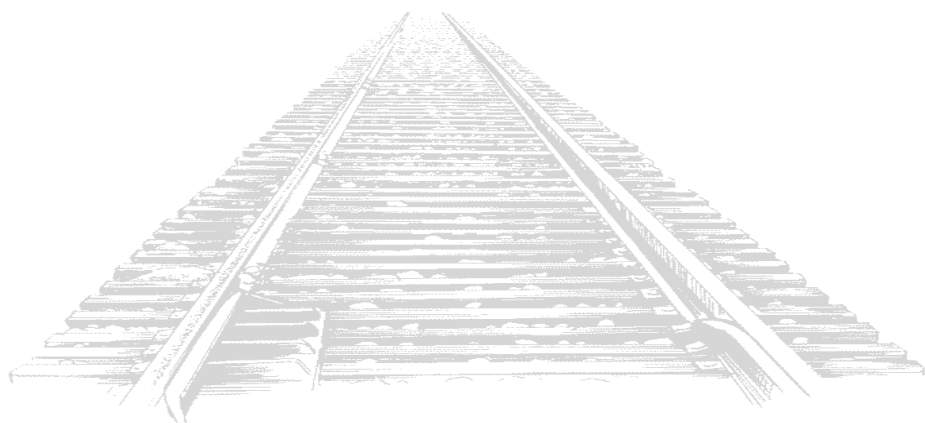
Stock Round 5

Alan		Mike	
+ GSWR new		✗	
+ GSWR new		✗	
+ GSWR new		+ S&D private	
+ GSWR new		✗	
✗		Priority for SR6	

Cash Flow	b/f	SR5	c/f	Value	%	Certs
Mike Hutton	301	-160	141	1,408	44.3	13
Alan Harvey	364	-268	96	1,769	55.7	17

Portfolio	Privates	Cal	NBR	GSWR	GNoS	High	M&C
Mike Hutton	A&F, S&D	1	7D	5D	-	-	-
Alan Harvey	TWW	9D	3	5	-	-	-
Bank (new)		-	-	-	10D	10D	10D
Price (new)		76	76	67			
Bank (pool)	S&D	-	-	-	-	-	-
Price (pool)		112	90	67			
Company credit		60	30	70			
Tokens		2	1	2			
Trains		3 2 2	3 3 2 2	2	{5}	{U3}	{3T}
Bank cash: 3,763		Certificate limit: 17		Trains: 1 x '4', 2 x '5'			

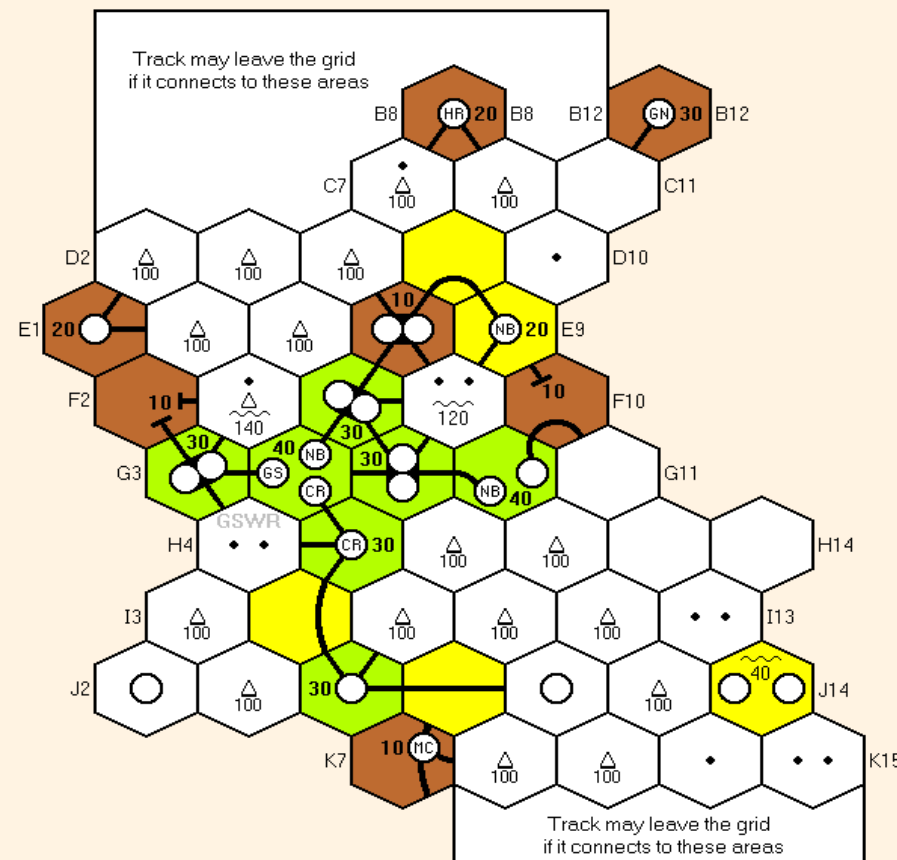
Tiles	Tile number/Availability					Two Operating Rounds between Stock Rounds									
Yellow	1/1	2/1	3/1	4/3	5/2	6/1	7/2	8/5	9/4	55/1	56/1	115/1			
Green	12/-	13/1	14/3	15/-	16/1	19/1	23/3	24/3	26/1	27/1	28/1	29/1			
	52/1	81/1													



1825 Unit 3

Game L21

Referee:
Keith Thomasson



© Keith Thomasson 2007

Orders required for the following rounds

By the early deadline

OR7, OR8

Adjudication can pause between rounds if requested



1826-E22

Lyndon has the priority deal.

OR1 - SR2

OR1	Pres	Lays	Run	Pay	Notes	Price	Credit	Loans	Trains
P	TF	9:F8:1	3:E7:3	-	① ②	100A▼	50	-	2H 2H
A	JS	8:F18:4	58:F16:1	-	②	100A▼	350	-	2H 2H
PO	SW	9:H8:2	4:J6:2	-	③ ②	82C▼	230	-	2H 2H

- Notes: ① 80 to the bank for terrain costs
 ② 200 to the bank for two '2H' trains
 ③ 40 to the bank for a token in I7

Stock Round 2

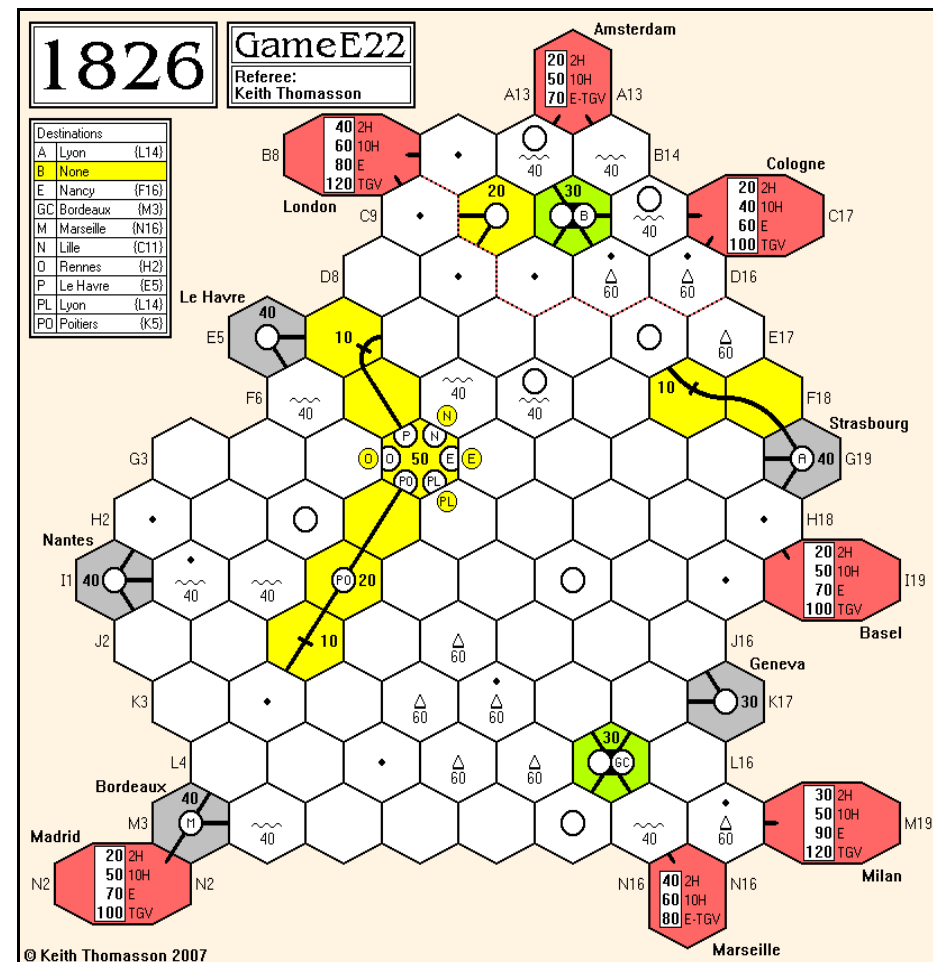
Lyndon	Don	Stephen	Tim	John
+ PO treasury	+ PO treasury	✗	✗	✗
+ P treasury	✗	✗	✗	✗
✗	Priority for SR2			

Cash Flow	b/f	OR1	SR2	c/f	Value	%	Certs
John Shelley	10	5	0	15	335	15.0▼	3
Lyndon Gurr	210	30	-182	58	390	17.4▲	4/5
Don Smith	70	45	-82	33	605	27.1▲	5
Stephen Webb	90	0	0	90	336	15.0▼	2
Tim Franklin	85	25	0	110	570	25.5▼	3

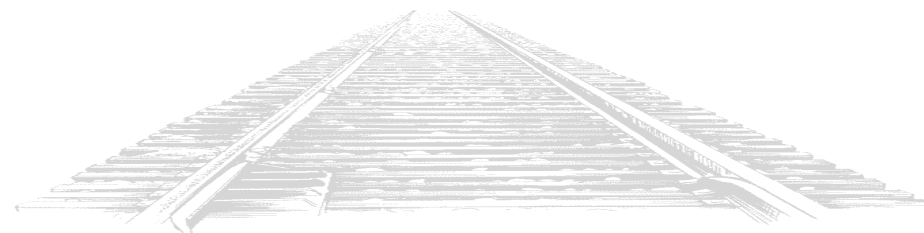
Portfolio	Privates	A	B	E	GC	M	N	O	P	PL	PO
John Shelley	Bridge	3P	-	-	-	-	-	-	-	-	-
Lyndon Gurr	Mail Belg	-	1	-	-	-	-	-	1	-	1
Don Smith	Alg Als	2	-	-	-	-	-	-	-	-	1
Stephen Webb	-	-	-	-	-	-	-	-	-	-	3P
Tim Franklin	Par	-	-	-	-	-	-	-	3P	-	-

Company type	5	10	-	-	-	-	-	5	-	5
Bank (new)	5	9	10	10	10	10	10	5	10	5
Bank (pool)	-	-	-	-	-	-	-	-	-	-
Treasury shares	-	-	-	-	-	-	-	1	-	-
Price	100A							100A		82C
Loans	-							-		-
Company credit	350							150		394
Tokens	2							2		1
Trains	2 2							2 2		2 2
Bank cash: 10,800	Certificate limit: 13							Trains: 2 x '2', 7 x '4'		
Current operating order:	P, A, PO									

Tiles	Tile number/Availability								One Operating Round between Stock Rounds		
Yellow	3/1	4/5	5/2	6/2	7/4	8/15	9/19	57/4	58/5		



Orders required for the following rounds *By the early deadline*
 OR2, SR3 *Adjudication can pause between rounds if requested*





1829-J19

One final round and we're done.

OR22

OR22	Pres	Lay	Token	Run	Pay	Notes	Price	Credit	Trains
LNWR	LR	-	-	500	Yes	-	500▲	50	2+2 4
NER	LQ	-	•R20 !	230	Yes	-	345▲	30	4
Mid	AH	41:Q19:2	•S19	350	Yes	-	180▲	10	4 4
NBR	JS	-	•J8	270	Yes	-	112▲	0	6
Cal	JS	-	•B12	160	Yes	-	64▲	10	3T
L&YR	DS	-	•L18	640	Yes	①	67▲	30	4+4E 5
GNR	AH	-	•S21	470	Yes	-	200▲	60	5 5
GCR	DS	-	•Q11	410	Yes	-	76▲	40	6 3T
GSWR	JS	-	•G3	200	Yes	-	56▲	20	2+2
High	Rcvr	8:C9:5	•D10	70	No	②	53▼	200	3T

Notes: ① The bank has run out of cash
② 10 to the bank for the hire of a '7' train

Cash Flow	b/f	OR22	c/f	Value	%	Certs
Lyndon Gurr	3,941	699	4,640	9,260	24.0▼	17
Alan Harvey	5,327	700	6,027	8,874	23.0▼	17
David Smith	4,787	835	5,622	8,055	20.9▲	17
John Shelley	2,257	485	2,742	4,377	11.4▲	17
Lionel Robbins	1,902	686	2,588	7,993	20.7▲	17

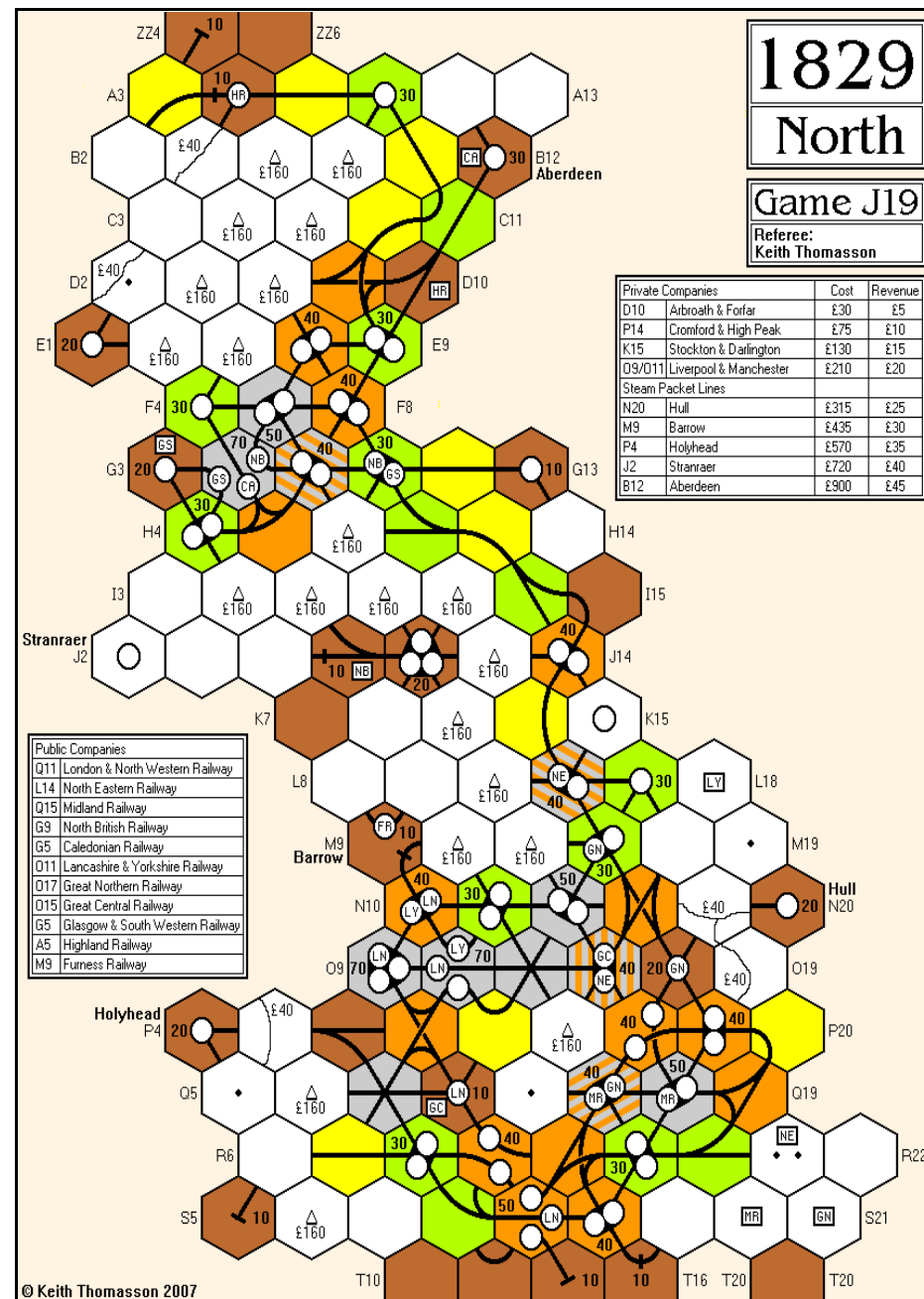
Portfolio	Packets	LNWR	NER	Mid	NBR	Cal	L&YR	GNR	GCR	GSWR	High	Furn
Lyndon Gurr	Aberdeen	3	6D	-	1	-	2	1	4	-	-	-
Alan Harvey	-	1	-	5D	-	3	1	6D	1	2	-	-
David Smith	Holyhead	-	1	-	2	-	6D	2	5D	2	-	-
John Shelley	-	-	-	-	7D	7D	1	-	-	6D	-	-
Lionel Robbins	Hull, Barrow, Stranraer	6D	3	5	-	-	-	1	-	-	-	-

Bank (new)	-	-	-	-	-	-	-	-	-	2	10P
Price (new)	100	90	82	76	71	67	64	61	58	56	
Bank (pool)	-	-	-	-	-	-	-	-	-	8D	-
Price (pool)	300	345	180	112	64	67	200	76	56	53	
Company credit	50	30	10	0	10	30	60	40	20	200	
Tokens	-	3	3	2	3	2	1	3	1	3	3
Trains	2+2	4	4 4	6	3T	4+4E	5 5	6 3T	2+2	3T	
	4					5					
Bank cash: 1,619	Certificate limit: 17										Trains: 4 x '7', 1 x '4+4E'

In the end it's congratulations to Lyndon, with Alan fairly close behind in second.

1st	Lyndon Gurr	9,260	24.0%
2nd	Alan Harvey	8,874	23.0%
3rd	David Smith	8,055	20.9%
4th	Lionel Robbins	7,993	20.7%
5th	John Shelley	4,377	11.4%

Comments are welcome to close next time. If you need a subject, how about why some people say what revenue they've worked out but don't give the route details that they have to know and which would save so much time during the adjudication...





1829-C20

Just one round, while people try to do all sorts of illegal things.

OR14

OR14	Pres	Lay	Token	Run	Pay	Notes	Price	Credit	Trains
LNWR	DSh	-	•Q17	300	Yes	①	200▲	340	3 2 2 2
GWR	MB	24:S11:1	•T12	290	Yes	-	275▲	100	4 4 2
Mid	PB	9:U19:1	•T18	150	Yes	-	112▲	910	3
LSWR	MB	27:U19:4	•O15 !	140	Yes	-	142▲	30	3 2
GNR	DSh	13:N10:1	•P14	210	Yes	-	126▲	780	4 3
LBSC	Rcvr	-	•V22	-	-	-	53▼	10	-
GER	MB	-	•W9	70	Yes	②	67▲	90	3 2
GCR	PB	-	•O13	-	-	③	58▼	180	4
L&YR	PB	27:K6:4	•M9	-	-	④	56▼	10	2
SECR	DSh	-	•W23	-	-	⑤	53▼	0	3

- Notes: ① 100 to the bank for a token in Q17
 ② 10 to the GWR for a '3' train
 ③ 430 to the bank for a '4' train
 ④ 570 to the Midland for a '2' train
 ⑤ 560 to the GNR for a '3' train

Cash Flow	b/f	OR14	c/f	Value	%	Certs
David Smith	474	269	743	2,933	26.7▲	18
Peter Berlin	34	131	165	1,741	15.9▼	15
Don Shailer	424	253	677	2,736	24.9▼	13
Martin Butcher	55	328	383	3,571	32.5▲	17

Portfolio	Privates	LNWR	GWR	Mid	LSWR	GNR	LBSC	GER	GCR	L&YR	SECR
David Smith	-	-	1	2	2	8D	-	2	-	-	5D
• Peter Berlin	L&M	-	-	6D	-	1	-	-	4D	6D	-
Don Shailer	C&HP	5D	2	-	-	1	-	2	3	-	-
Martin Butcher	-	-	6D	-	8D	-	-	6D	-	-	-

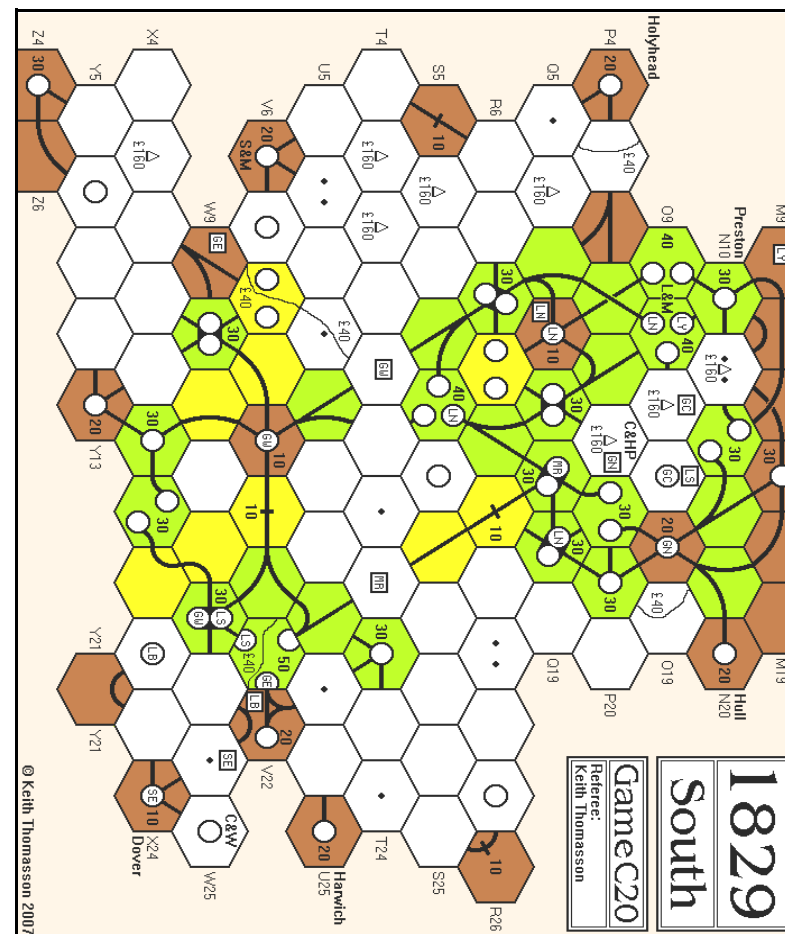
Bank (new)	Hull...	-	-	-	-	-	-	-	-	-	4
Price (new)		100	90	82	76	71	67	64	61	58	56
Bank (pool)	C&W	5	1	2	-	-	10D	-	3	4	1
Price (pool)		200	275	112	142	126	53	67	58	56	53
Company credit		340	100	910	30	780	10	90	180	10	0
Tokens		2	4	4	4	4	3	3	4	3	3
Trains		3222	442	5	32	43	-	32	4	2	3
Bank cash: 18,032		Certificate limit: 18					Trains: 1 x '4', 5 x '5'				

Tiles	Tile number/Availability										Two Operating Rounds between Stock Rounds									
Yellow	1/2	2/2	3/2	4/4	5/4	6/4	7/2	8/6	9/9											
Green	10/-	12/1	13/1	14/-	15/-	16/1	17/1	18/1	19/2	20/1	21/1	22/1								
	23/3	24/1	25/-	26/2	27/-	28/-	29/1	30/1	31/1											

You cannot upgrade a blank board hex to a 10 tile - you must use your survey party and lay this tile as if it were a yellow tile. This wasn't what stopped the LNWR, though. It the fact that three 10 tiles are already on the board. Check the tile tile above before ordering so that you don't waste your time asking for tiles that are not available.

People occasionally forget to order movement for their survey party. When this happens I try to move it to a neutral location like a brown hex, where it can happily stay put. However, note that if it does not move you cannot lay or upgrade a tile, so if you forget to order the survey party movement when it doesn't have to move, it won't, and you won't lay or upgrade tiles.

Please avoid writing conditional orders so that an order is given, followed by a condition which means the given order may not take place. The layout should be If (condition) do this, (otherwise) do that. By putting the condition after the order, it is possible I will simply execute the given order.



Orders required for the following rounds	By the early deadline
OR15, SR12	Adjudication can pause between rounds if requested



1829-V21

Just one share purchase.

SR5

Stock Round 5

Rob	Lionel	Peter	John	Mike
✗	+ NER pool	✗	✗	✗
✗	✗	Priority for SR6		

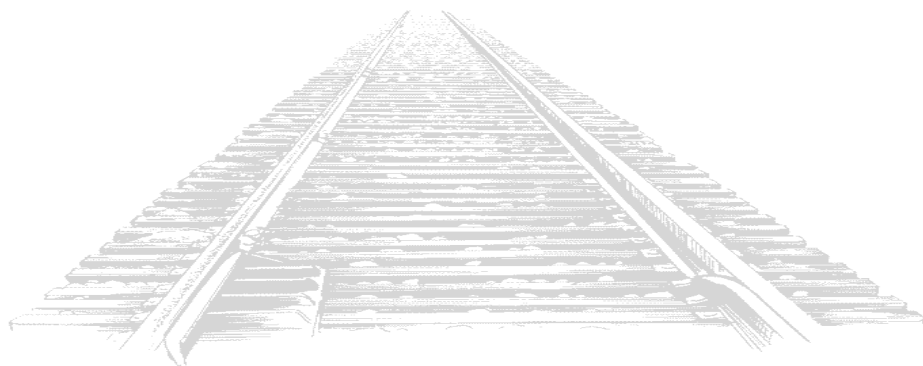
Cash Flow	b/f	SR5	c/f	Value	%	Certs
Rob Thomasson	282	0	282	564	18.8	3
Lionel Robbins	191	-67	124	594	19.8	4
Peter Berlin	124	0	124	644	21.5	4
John Hopkins	325	0	325	581	19.4	2
Mike Hutton	31	0	31	610	20.4	5

Portfolio	Privates	LNWR	NER	Mid	NBR	Cal	L&YR	GNR	GCR	GSW	High	Furn
Rob Thomasson	A&F	2	-	-	-	-	-	-	-	-	-	-
Lionel Robbins	L&M	1	2	-	-	-	-	-	-	-	-	-
✗ Peter Berlin	C&HP	3D	1	-	-	-	-	-	-	-	-	-
John Hopkins	S&D	2	-	-	-	-	-	-	-	-	-	-
Mike Hutton	-	3	3D	-	-	-	-	-	-	-	-	-

Bank (new)	Hull...	-	3	10P	10P	10P	10P	10P	10P	10P	10P	10P
Price (new)		100	90	82	76	71	67	64	61	58	56	53
Bank (pool)		-	1									
Price (pool)		126	67									
Company credit		600	500									
Tokens		5	5	5	4	4	4	4	4	3	3	3
Trains		2	2	2	2	2	2	2	2	2	2	2
Bank cash: 19,114	Certificate limit: 18											
Trains: 3 x '2', 5 x '3'												

Tiles	Tile number/Availability	One Operating Round between Stock Rounds
Yellow	1/2 2/2 3/2 4/5 5/3 6/4 7/3 8/8 9/9	

Sooner or later the NER is going to get itself a run, and then the shares may look more interesting. Meanwhile, Peter is happily creeping ahead due to his LNWR majority.



1829

North

Game V21

Referee:
Keith Thomasson

Private Companies	Cost	Revenue
D10 Arbroath & Forfar	£30	£5
P14 Cromford & High Peak	£75	£10
K15 Stockton & Darlington	£130	£15
O9/O11 Liverpool & Manchester	£210	£20
Steam Packet Lines		
N20 Hull	£315	£25
M9 Barrow	£435	£30
P4 Holyhead	£570	£35
J2 Stranraer	£720	£40
B12 Aberdeen	£900	£45

Public Companies
Q11 London & North Western Railway
L14 North Eastern Railway
Q15 Midland Railway
G9 North British Railway
G5 Caledonian Railway
O11 Lancashire & Yorkshire Railway
O17 Great Northern Railway
O15 Great Central Railway
G5 Glasgow & South Western Railway
A5 Highland Railway
M9 Furness Railway

© Keith Thomasson 2007

Orders required for the following rounds

By the early deadline

OR5, SR6

Adjudication can pause between rounds if requested



1830-G20

Martin helps the
PRR buy a Diesel.

OR12 - OR13

OR12	Pres	Lay	Run	Pay	Notes	Price	Credit	Trains
NYC	DS	53:E23:2	230	Yes	-	220B▲	28	5
Erie	WM	7:D8:5	160	Yes	-	180B▲	106	5
PRR	MB	15:H4:6	-	-	①	100D▼	0	D
NYNH	DS	61:E23:4	240	Yes	-	80F▲	273	5
CPR	RK	14:B10:2	170	Yes	-	70G▲	83	6
B&O	RK	24:G3:1	480	Yes	-	67G▲	156	D
B&M	SW	-	110	Yes	-	50J▲	44	6
C&O	WM	-	350	Yes	-	50H▲	0	D

Notes: ① 1,100 to the bank for a Diesel, with 482 from Martin

OR13	Pres	Lay	Run	Pay	Notes	Price	Credit	Trains
NYC	DS	15:F16:3	240	Yes	-	240B▲	28	5
Erie	WM	65:E11:5	220	Yes	-	200B▲	128	5
PRR	MB	7:H2:3	300	Yes	-	110D▲	60	D
NYNH	DS	-	240	Yes	-	90E▲	297	5
CPR	RK	9:C9:2	170	Yes	-	75F▲	117	6
B&O	RK	43:G3:1	480	Yes	①	69G▲	200	D
B&M	SW	24:D20:3	110	Yes	-	60I▲	88	6
C&O	WM	-	350	Yes	-	40H▲	0	D

Notes: ① 100 to the bank for a token in H10

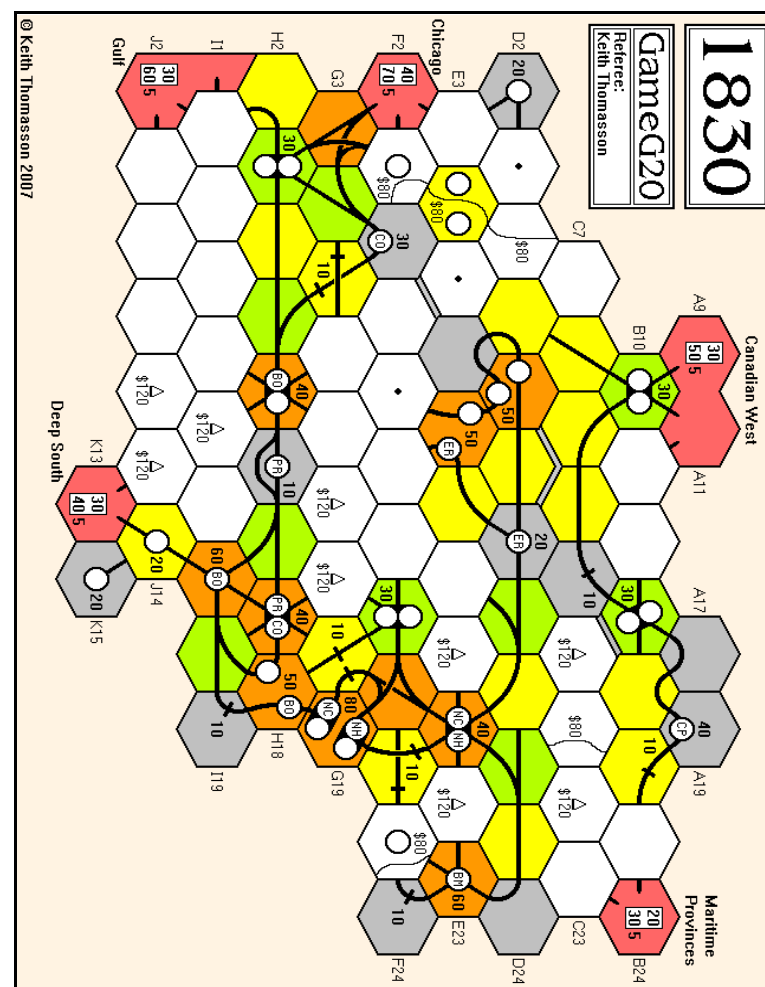
Cash Flow	b/f	OR12	OR13	c/f	Value	%	Certs
Stephen Webb	109	243	247	599	1,997	17.6▲	6/10
Martin Butcher	546	-375	305	476	1,866	16.4▼	9/10
Willem Moene	17	395	425	837	2,197	19.4▲	4/12
Don Smith	473	309	321	1,103	3,343	29.4▼	11/12
Roger Krueger	132	356	416	904	1,949	17.2▲	11

Please note that the companies are now listed on the portfolio in alphabetical order.

Portfolio	B&M	B&O	C&O	CPR	Erie	NYC	NYNH	PRR
Stephen Webb	5P	2	-	-	-	4	-	-
Martin Butcher	-	-	1	-	3	-	1	6P
Willem Moene	-	-	9P	-	5P	-	-	-
Don Smith	1	-	-	-	1	6P	6P	-
Roger Krueger	-	5P	-	4P	-	-	2	2

Bank (new)	-	-	-	4	-	-	-	-
Price (new)	67	100	67	76	100	90	71	76
Bank (pool)	4	3	-	2	1	-	1	2
Price (pool)	60I	69G	40H	75F	200B	240B	90E	110D
Company credit	88	200	0	117	128	28	297	60
Tokens	1	-	1	3	1	2	-	2
Trains	6	D	D	6	5	5	5	D
Bank cash: 7,163				Certificate limit: 13		Trains: Diesels		
Current operating order:		NYC, Erie, PRR, NYNH, CPR, B&O, B&M, C&O						

Tiles	Tile number/Availability							Three Operating Rounds between Stock Rounds						
Yellow	1/1	2/-	3/2	4/2	7/1	8/5	9/2	55/-	56/1	57/3	58/1	69/-		
Green	14/1	15/-	16/1	18/1	19/1	20/1	23/-	24/-	25/1	26/1	27/1	28/1		
	29/1	53/2	54/1	59/2										
Brown	39/1	40/1	41/2	42/2	43/1	44/1	45/1	46/2	47/1	61/-	62/-	63/-		
	64/-	65/-	66/-	67/1	68/1	70/1								



Orders required for the following round

By the early deadline

SR9



1830-R20

Not quite as long as expected.

OR9

OR9	Pres	Lay	Run	Pay	Notes	Price	Credit	Trains
B&O	DS	63:H16:1	270	No	-	112B	490	4
NYNH	MF	46:F18:2	260	Yes	-	120D	69	5
B&M	MF	14:E19:3	260	Yes	-	82E	36	5
NYC	WM	9:E21:3	-	-	① ②	58F	228	-

Notes: ① 120 to the bank for terrain costs
 ② Willem sells 3 NYC (+58F) and gives the NYC 227, but the company can get no more funding for a train and Willem goes bankrupt

Cash Flow	b/f	OR9	c/f	Value	%	Certs
Richard Lunn	221	104	325	1,123	19.2	5/12
Mark Frueh	480	312	792	2,268	38.8	12/14
Willem Moene	17	-17	0	308	5.3	3
Don Smith	202	26	228	1,082	18.5	8
Mike Hutton	162	52	214	1,060	18.2	8/10

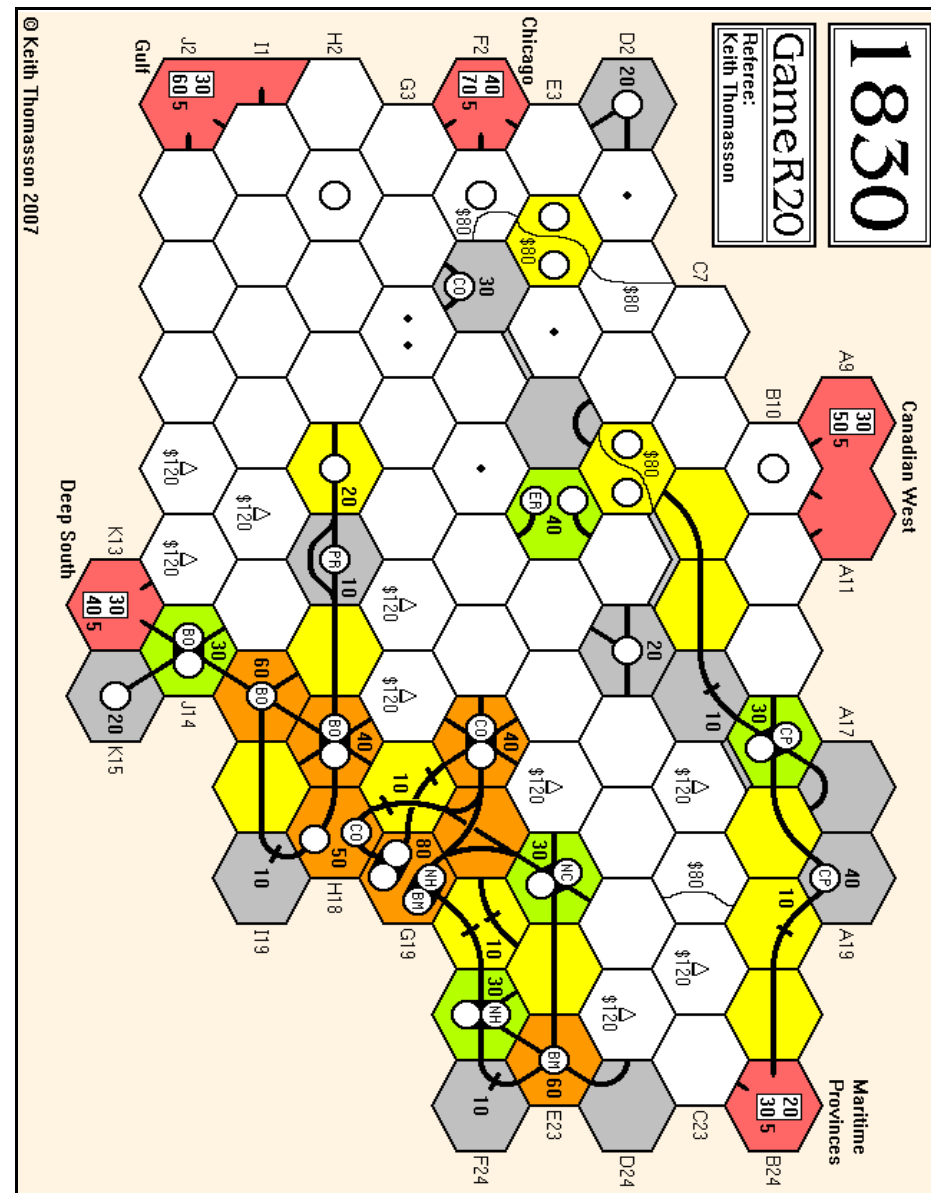
Portfolio	PRR	NYC	CPR	B&O	C&O	Erie	NYNH	B&M
Richard Lunn	-	-	8P	1	-	-	1	3
Mark Frueh	-	-	1	1	1	1	6P	6P
Willem Moene	2P	3P	-	-	-	-	-	-
Don Smith	-	3	-	5P	-	-	1	-
Mike Hutton	1	-	1	1	5P	2P	1	1

Bank (new)	3	1	-	2	4	4	-	-
Price (new)	90	82	71	100	76	82	76	71
Bank (pool)	4	3	-	-	-	3	1	-
Price (pool)	67H	58F	40J	112B	67E	45G	120D	82E
Company credit	42	228	240	490	345	0	69	36
Tokens	3	4	2	-	-	2	-	-
Trains	6.6	-	4	4	5.4	4	5	5
Bank cash: 8,991	Certificate limit: 13				Trains: Diesels			

With the sudden end to the game, Don drops from second to third. He clearly expected his long term plans to have time to come to fruition. Mark is the clear winner, however, having been hot favourite for some time.

1st	Mark Frueh	2,268	38.8%
2nd	Richard Lunn	1,123	19.2%
3rd	Don Smith	1,082	18.5%
4th	Mike Hutton	1,060	18.2%
5th	Willem Moene	308	5.3%

We'll round up next time before closing the doors on this one. Send me your comments on the game if you wish and we'll see what you have to say.





1830-F21

No new trains this month.

OR6 - SR5

OR6	Pres	Lay	Run	Pay	Notes	Price	Credit	Trains
B&O	DS	53:115:1	100	Yes	①	100A	660	3
B&M	WM	9:E21:3	60	Yes	②	100A	280	4
NYC	MH	2:G17:1	80	Yes	-	82C	610	3
PRR	MS	15:H16:6	90	No	-	71F	316	3
C&O	TS	8:H8:1	170	Yes	③	80F	277	3 3
Erie	MS	8:E13:6	60	Yes	-	71E	410	4
NYNH	WM	-	90	Yes	-	60J	175	4

- Notes: ① 80 to Don for the C&StL private
 ② 120 to the bank for terrain costs
 ③ 40 to the bank for a token in H16

Stock Round 5

Don	Tony	Mike	Mark	Willem
- 1 B&O {+90B}	+ NYC new	- 2 PRR {+68H}	+ PRR pool	+ NYNH pool
+ CPR/Pres {100}		+ B&O pool		
+ CPR new	+ NYC new	+ C&O pool	- 1 NYNH {+50J}	+ NYNH pool
			+ PRR pool	
x	x	x	x	x
Priority for SR6				

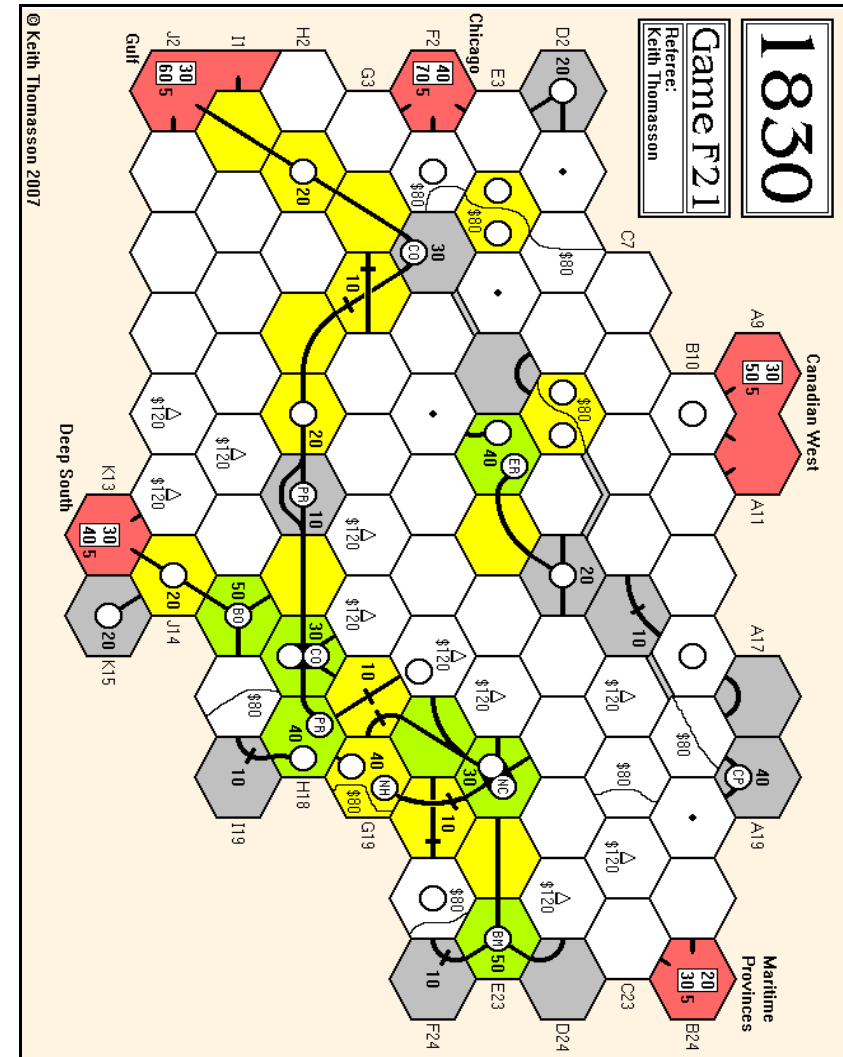
Cash Flow	b/f	OR6	SR5	c/f	Value	%	Certs
Mark Stretch	79	45	-76	48	882	20.7	10
Willem Moene	31	80	-110	1	931	21.9	6/10
Don Smith	74	150	-200	24	774	18.2	6
Tony Salt	88	111	-164	35	865	20.4	9/10
Mike Head	41	54	-28	67	800	18.8	8

Please note that the companies are now listed on the portfolio in alphabetical order.

Portfolio	Privates	B&M	B&O	C&O	CPR	Erie	NYC	NYNH	PRR
Mark Stretch	-	-	-	-	-	6P	-	-	6P
Willem Moene	-	6P	-	1	-	-	-	5P	-
Don Smith	-	-	5P	-	3P	-	-	-	-
Tony Salt	-	-	-	6P	-	-	2	1	2
Mike Head	-	-	1	1	-	1	6P	-	-

Bank (new)	4	4	-	7	3	2	-	-
Price (new)	100	100	67	100	71	82	67	67
Bank (pool)	-	-	2	-	-	-	4	2
Price (pool)	100A	90B	80F	100A	71E	82C	50J	68H
Company credit	280	660	277		410	610	175	316
Tokens	1	2	1	4	2	3	1	2
Trains	4	3	3.3		4	3	4	3
Bank cash: 9,097	Certificate limit: 13				Trains: 1 x '4', 3 x '5'			
Current operating order:	B&M, B&O, NYC, C&O, Erie, PRR, NYNH							

Tiles	Tile number/Availability				Two Operating Rounds between Stock Rounds								
Yellow	1/1	2/-	3/2	4/2	7/4	8/6	9/3	55/-	56/1	57/1	58/2	69/-	
Green	14/3	15/-	16/1	18/1	19/1	20/1	23/2	24/3	25/1	26/1	27/1	28/1	
	29/1	53/-	54/1	59/-									



Orders required for the following rounds

By the early deadline

OR7, OR8

Adjudication can pause between rounds if requested



1835-B21

Just one round, which sees the Prussian form.

OR8

OR8	Pres	Lay	Run	Pay	Notes	Price	Credit	Trains
B-M	TS	9:K7:2	140	Yes	①		100	2+2
B-P	MS	25:C19:5	170	Yes	-		0	-
Mag	DS	23:F16:2	80	Yes	②		0	3
K-M	WM	210:G3:3	160	Yes	①		175	2+2
B-S	JS	8:H18:3	140	Yes	-		140	-
A-K	JS	-	70	Yes	③		0	2+2
ByE	JS	9:N14:1	190	Yes	④	140E▲	472	3+3 3
SxE	MS	-	340	Yes	⑤	110C▲	175	3+3 3 3
HeE	TS	215:J6:1	-	-	① ④ ⑥	78D▼	90	3+3
WtE	JS	5:M9:3	-	-	⑦ ⑧	78D▼	60	4
BaE	WM	87:K3:1	-	-	⑦	78D▼	60	4
MsE	DS	23:E11:3	-	-	⑦	72E▼	30	4

- Notes: ① 50 to the bank for terrain costs
 ② 200 to the MsE for a '3' train
 ③ 225 to the ByE for a '2+2' train
 ④ 270 to the bank for a '3+3' train
 ⑤ 60 to the bank for a token in E19
 ⑥ 10 to the B-M for a '2' train
 ⑦ 360 to the bank for a '4' train
 ⑧ The Prussian is formed

Cash Flow	b/f	OR8	c/f	Value	%	Certs
Willem Moene	160	144	304	980	16.4▼	7
Mark Stretch	16	255	271	1,143	19.2▲	5
Tony Sait	52	221	273	1,261	21.1▼	10
Don Smith	24	70	94	1,084	18.2▼	8
John Shelley	29	219	248	1,494	25.1▼	11

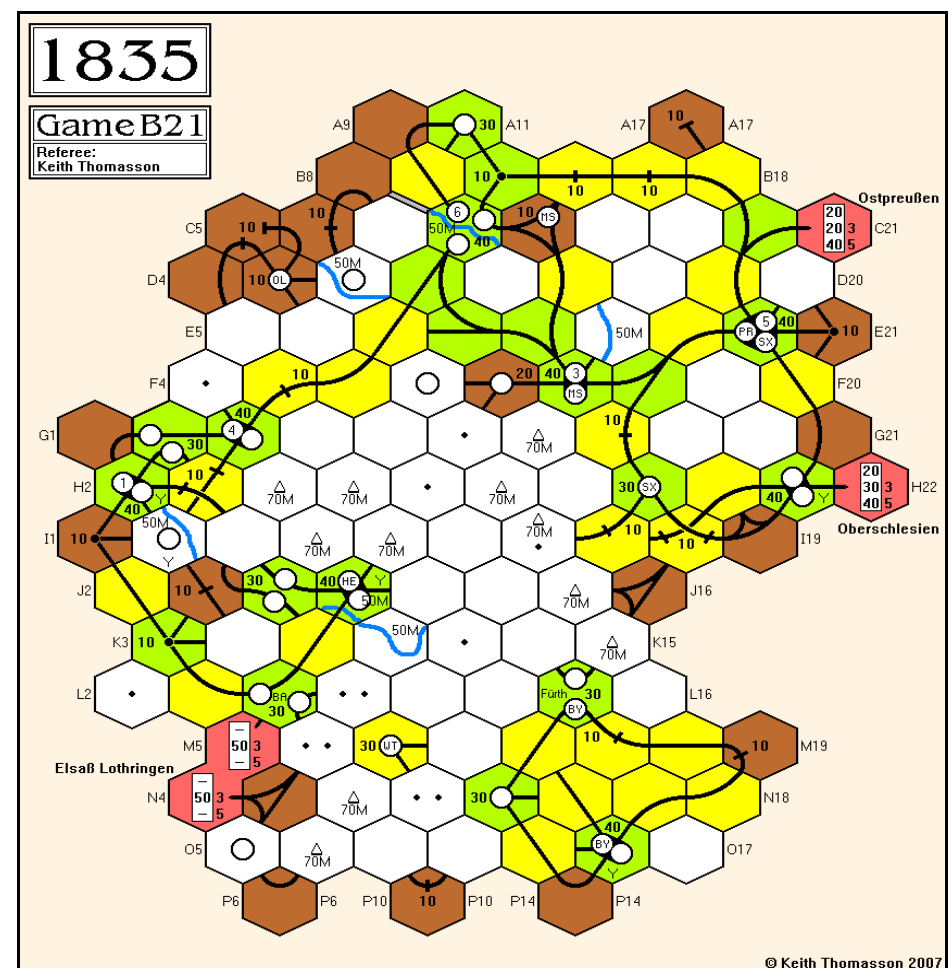
Portfolio	Privates	PrE	ByE	SxE	BaE	WtE	HeE	MsE	OIE
Willem Moene	Han / K-M	-	-	10/1	50/4	-	-	-	-
Mark Stretch	-	20/2	-	50/4	-	-	-	-	-
Tony Sait	Pfa / B-M	-	-	40/4	-	-	50/4	-	-
Don Smith	N-F, Bra / Mag	-	-	-	-	-	-	60/3	40/2
John Shelley	B-S, A-K	-	60/5	-	-	50/4	-	-	-

Bank (new)	30/3	-	-	100/8	100/8	80/7	40/4	100/7
Price (new)	154	92	88	84	84	84	80	80
Bank (pool)	-	40/4	-	-	-	-	-	-
Price (pool)	154D	140E	110C	78D	78D	78D	72E	
Company credit	419	472	175	60	60	90	30	
	1	3	1	1	1	1	-	
Trains	2+2	3+3	3+3	4	4	3+3	4	
		3	3 3					

Bank cash: 9,089 Certificate limit: 12 Trains: 1 x '4+4', 2 x '5'...
 Current operating order: Minors, PrE, ByE, SxE, HeE, WtE, BaE, MsE

At the start of the next rounds, a number of people may convert assets to Prussian shares, namely the B-M for Tony, the Bra and Mag for Don, the B-S and A-K for John, and the Han and K-M for Willem. Whatever happens, Mark will retain control of the PrE for OR9.

Tiles	Tile number/Availability										Two Operating Rounds between Stock Rounds					
Yellow	1/1	2/1	3/2	4/1	5/2	6/3	7/8	8/7	9/3	55/1	56/-	57/2				
	58/-	69/1	201/2	202/2												
Green	12/-	13/2	14/2	15/-	16/2	18/1	19/2	20/2	23/1	24/2	25/1	26/2				
	27/2	28/2	29/2	87/1	88/2	203/1	204/2	205/-	206/1	207/-	208/1	209/-				
	210/-	211/1	212/1	213/1	214/-	215/-										



Orders required for the following rounds

By the early deadline

OR9, SR8

Adjudication can pause between rounds if requested



1837-G21

We take the operating round and leave the stock round for later.

OR6

The ZKB lay from last time ha been removed, as the Sb home base blocked access to the hex.

Tony made another 48 from his Ms shares - a formula was missing from the spreadsheet, for Tony and the Ms only.

OR6	Pres	Lay	Run	Mines	Pay	Notes	Price	Credit	Trains
EKT	DS	405:C23:3	60	25	Half	-		57	1G
MLB	GH	9:B28:3	60	20	Half	①		0	2G
ZKB	DS	-	30	25	Half	-		75	1G
SPB	SW	-	40	30	Half	-		51	1G
LRB	SW	19:J20:6	40	25	Half	-		46	1G
BB	DS	23:K15:5	70	35	Half	-		195	1G
S1	SW	408:H20:6	110	-	Half	-		160	-
S2	TR	24:I17:3	70	-	Half	-		35	-
S3	SW	-	70	-	Half	-		35	-
S4	GH	-	-	-	-	②		1	-
S5	GH	-	70	-	Half	-		35	-
K1	SW	402:G19:1	140	20	Half	③		139	2G
K2	TR	413:F16:6	90	-	Half	-		50	-
K3	TR	207:H10:1	100	-	Half	-		70	3
U1	DS	406:F28:2	100	-	Half	-		170	-
U2	DS	-	60	-	Half	-		80	-
U3	TR	87:I23:6	110	-	Half	-		60	3
Th	DS	9:G31:2	250	25	Yes	-	100C▲	586	2G 2G 1G
Bk	SW	406:G19:1	350	30	Yes	④	96D▲	326	3+1 3 2G
Sb	GH	405:J36:6	60	25	Yes	⑤ ⑥	97B▲	75	4 3 2G
Ms	TR	406:C11:1	350	50	Yes	⑦	76G▲	150	3+1 2G 1G

- Notes: ① 50 to the bank to surrender a '1G' train, 165 to the Sb for a '2G' train
 ② 220 to the Sb for a '3' train
 ③ 50 to the bank for terrain costs
 ④ 120 to the bank for a token in G19
 ⑤ 1 to the S4 for a '3' train
 ⑥ 470 to the bank for a '4' train - the five Southern National minors merge into the Sudbahn (the Sd) - Stephen will run the Sd
 ⑦ 80 to the bank for a token in C11

Cash Flow	b/f	OR6	c/f	Value	%	Certs
Stephen Webb	386	260	646	1,889	25.6▲	8
Don Smith	164	310	474	1,644	22.2▼	11
Tony Robbins	184	409	593	1,777	24.1▲	11
Geoff Hardingham	233	247	480	2,075	28.1▼	13

Portfolio	Mountains etc	Bh	Bk	Cl	Gt	Kk	Ms	Sb	Sd	Th	Ug
Stephen Webb	A S SPB LRB K1	-	2D	-	-	-	-	-	3D	-	-
Don Smith	EKT ZKB BB	-	-	-	-	-	-	-	-	6D	-
	U1*2 U2										
Tony Robbins	Kara	-	1	-	-	-	6D	-	1	-	-
	K2 K3 U3/P										
Geoff Hardingham	B Kart T W	-	1	-	-	-	-	5D	2	-	-
	MLB U3										
Bank (new)		9	1	9	10	7	3	3	4	3	5
Price (new)			104			120	70	97	142	91	175
Bank (pool)		-	5	-	-	-	-	-	-	-	-
Price (pool)			96D				76G	97B	142D	100C	
Company credit		-	326	-	-	-	150	75	976	586	-
Tokens		3	1	3	3	-	2	3	1	2	-
Trains		-	3+1	-	-	-	3+1	4	3	2G	-
			3				2G	3		2G	
			2G				1G	2G		1G	

Bank cash: 8,969 Certificate limit: 21 Trains: 3 x '4', 1 x '4+4E'...

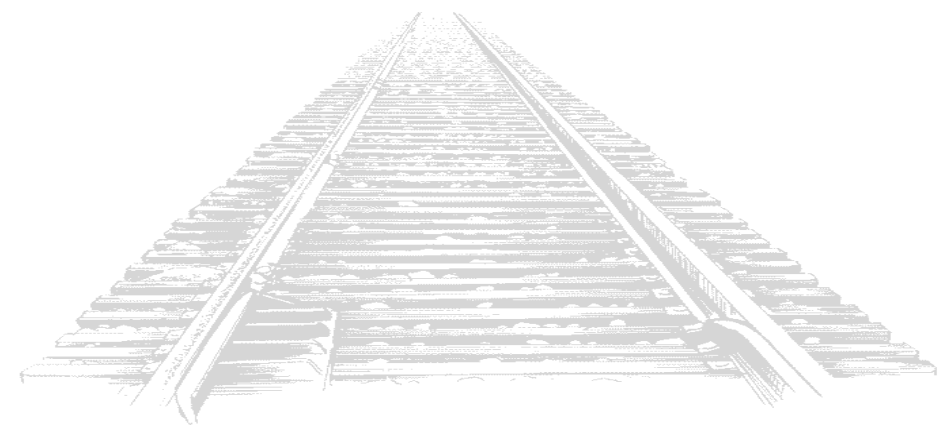
Second hand: 3 x '1G'

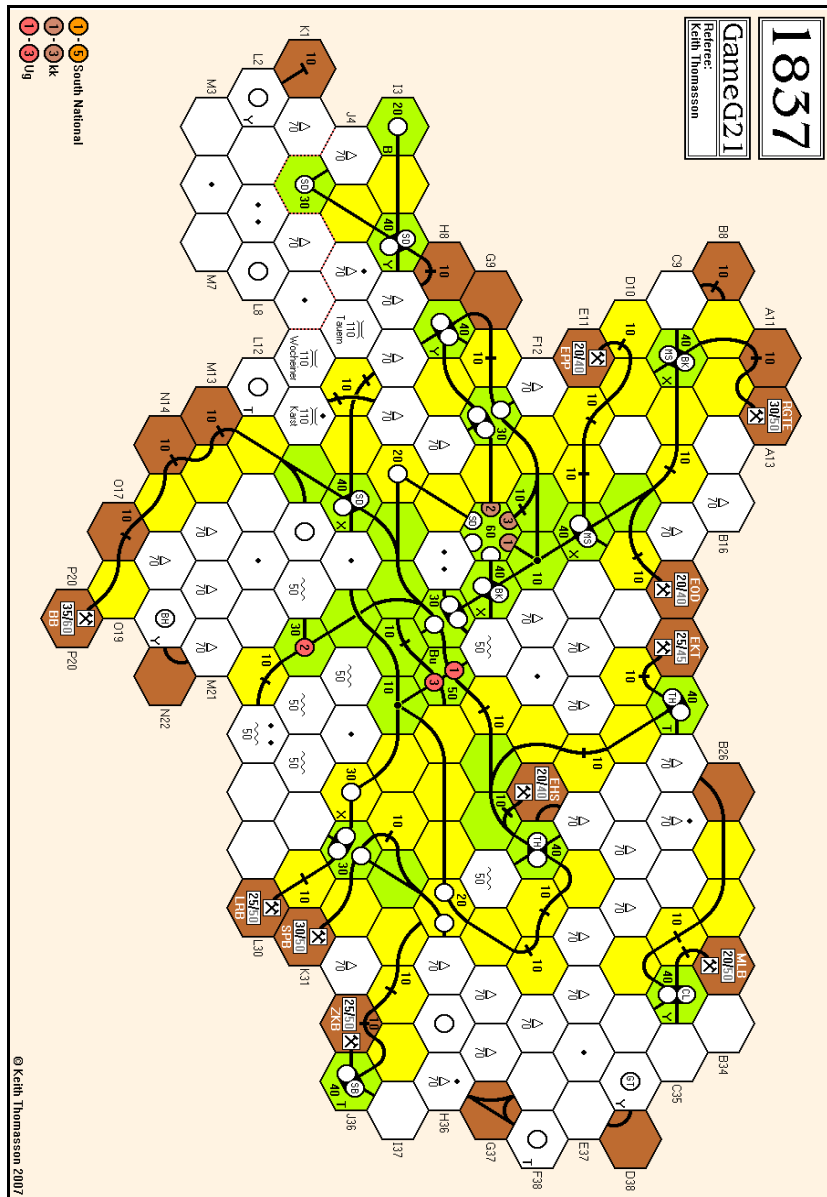
Current operating order: Coal companies, K1-K3, U1-U3, Sd, Th, Bk, Sb, Ms

Tiles	Tile number/Availability				Two Operating Rounds between Stock Rounds							
Yellow	1/2	2/3	3/3	4/7	5/1	7/7	8/16	9/11	55/1	56/1	57/2	58/5
	69/2	201/3	202/4	401/4	402/2	404/3						
Green	12/2	16/3	17/1	18/1	19/2	20/3	23/10	24/10	25/4	26/4	27/4	28/3
	29/3	30/1	31/1	87/-	88/2	204/2	205/2	206/-	207/1	208/2	405/2	406/1
	408/1	410/2	411/2	412/2	413/1	414/1	415/1	416/1	417/1	418/2	419/2	420/2
	421/2	422/1	423/2	424/1	425/-	426/1	427/-	429/1				

The EKT, ZKB, SPB and LRB coal companies can be exchanged for shares in the major companies before the stock round.

The train limit for all minor companies is currently one. The train limit for major companies is three, while the Sd limit is four. This may explain why some requested train purchases did not happen.





Orders required for the following round	By the early deadline
SR6	

LANCASHIRE RAILWAYS 10

Not enough uncertainty?

GAME OVER

1st	Roger Krueger	146
2nd	Lyndon Gurr	120
3rd	Martin Butcher	115
4th	Tony Wilcock	4

Martin Butcher (3rd): While I quite enjoy playing these games, it feels that the winner is determined halfway through, and then you are simply going through the motions from then on. In itself, I suppose this isn't a bad thing, since the winner is usually the player who plans his network the best, but unlike Age of Steam there can't be a last minute surge. Mustn't grumble, congratulations to Roger on his win, Lyndon for staying one step ahead of me, Tony for persevering, and Keith for running the game.

I know what Martin means, but it is by no means confined to Lancashire Railways or its partners. In Railway Rivals is often pretty clear with a few rounds to go who will come out on top. Perhaps you just have the feeling that there is more chance that you'll catch up than in these games.

UK GAMES EXPO 2007

UK Games Expo will take place at the The Clarendon Suites, Stirling Road (off Hagley Road), Edgbaston, Birmingham (UK), June 2nd-3rd, 2007.

The United Kingdom has a long tradition of miniatures games, board games and other similar shows dating back many years. However, whilst mainland Europe and the USA have attracted many thousands of visitors to major international events in Essen and Indianapolis, the UK has been very much in their shadow.

UK Games Expo intends to begin to challenge that dominance. The UK deserves a showcase convention of the very best in the world of gaming, whether it be miniatures games, board games, card games, role-playing games or computer games.

I shall be at the show with Heron Games and would like to see as many people there as possible. Advance orders for games can be collected at the show to avoid paying any postage. I will also be promoting For Whom the Die Rolls and For Whom the Web Rocks.

Book those dates and book your tickets early. There's more information on the web site (www.ukgamesexpo.co.uk). There is now a Tickets tab instead of the Register tab, which states that the booking system will go live on March 1st.

Prices are £3.95 for adults, £1.95 for children, or £7.95 for a family ticket, which covers two adults and three children.

No children? Borrow some for the weekend and introduce them to the sort of games we like.



1850-R22

A number of bids, but nothing goes for more than ten above face value.

PRIVATES

Stock Round 1 - Private Companies

Stephen	Bids 90 on the MMC
Alan	Bids 45 on the CM
Lyndon	Bids 50 on the CM
Tim	Bids 55 on the GBCC
Stephen	Buys the GRSC for 20
	✱ Lyndon gets the CM for 50
Alan	Buys the MRBC for 40
	✱ Tim gets the GBCC for 55
	✱ Stephen gets the MMC for 90
Lyndon	Bids 165 on the MMR
Tim	✗
Stephen	✗
Alan	Buys the WLGC for 90
	✱ Lyndon gets the MMR for 165, with a 10% share of the CRIP
	Priority for the remainder if the round lies with Lyndon

Cash Flow	b/f	Privates	c/f	Value	%	Certs
Stephen Webb	525	-110	415	515	24.9▼	2
Alan Harvey	525	-130	395	525	25.4▲	2
Lyndon Gurr	525	-215	310	510	24.6▼	2/3
Tim Franklin	525	-55	470	520	25.1▲	1

Portfolio	Privates	CBQ	CMSP	CRIP	GN	MKT	MP	NP	SOO	UP
Stephen Webb	GRSC, MMC	-	-	-	-	-	-	-	-	-
Alan Harvey	MRBC, WLGC	-	-	-	-	-	-	-	-	-
✱ Lyndon Gurr	CM, MMR	-	-	1	-	-	-	-	-	-
Tim Franklin	GBCC	-	-	-	-	-	-	-	-	-

Bank (new)	10	10	9	10	10	10	10	10	10	10
------------	----	----	---	----	----	----	----	----	----	----

Price (par)

Bank (pool)

Price (pool)

Company credit

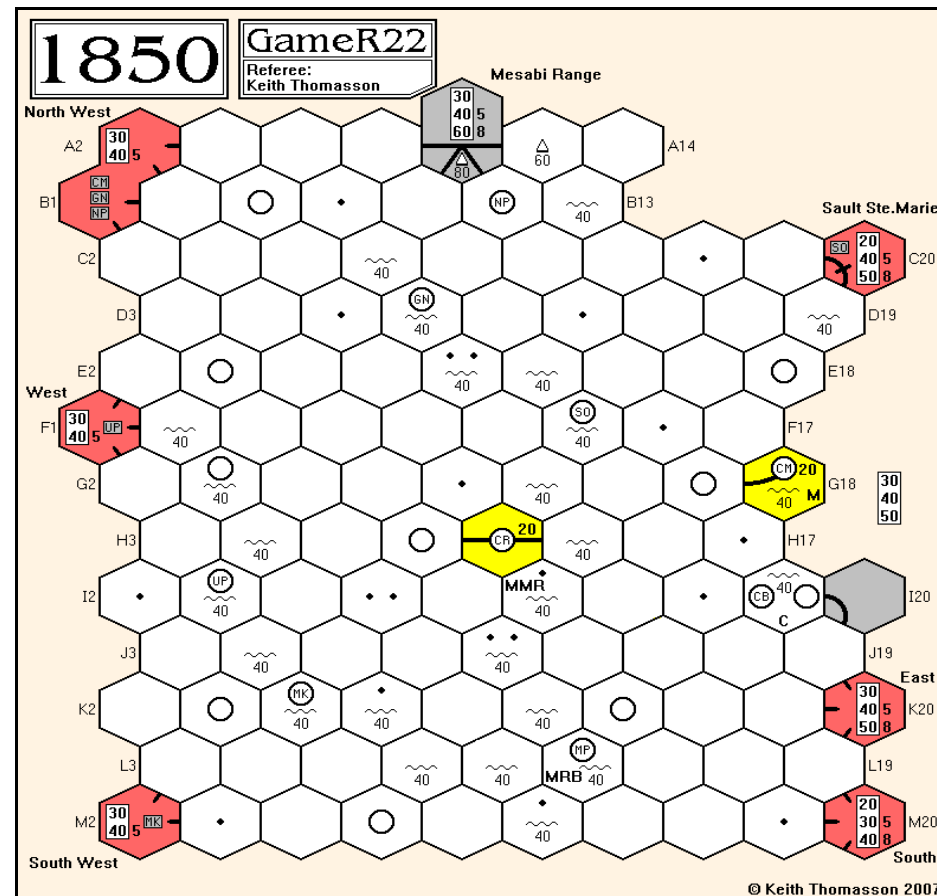
Tokens 4 3+E 4 3+E 3+E 3 3+E 3+E 3+E

Trains

Bank cash: 10,410 Certificate limit: 13 Trains: 6 x '2', 6 x '3'...

Tiles Tile number/Availability One Operating Round between Stock Rounds

Yellow	1/1	2/1	3/3	4/4	5/2	6/2	7/6	8/20	9/20	55/1	56/1	57/5
	58/4	69/1	128/1									



A note about the map. The grey rectangles in the red off-board areas contain the initials of the companies that can place edge tokens in those areas. When the tokens are placed I plan to change those to white backgrounds. Do remind me if I forget.

Orders required for the following round

By the early deadline

SR1 - public companies



1856-M19

Run and pay to the finishing line.

OR17 - OR19

OR17	Pres	Lay	Run	Pay	Notes	Price	Credit	Trains
THB	WM	20:K14:3	500	Yes	-	200D▲	423	D
WGB	SC	-	620	Yes	-	200A▲	21	D 5
BBG	LG	8:L11:4	990	Yes	-	200A▲	52	D 5
CGR	SC	-	850	Yes	①	150A▲	381	D
TGB	SW	8:N9:6	310	Yes	-	110E▲	256	6
CPR	TS	127:M4:1	320	Yes	-	70G▲	38	6

Notes: ① The bank has run out of cash

OR18	Pres	Lay	Run	Pay	Notes	Price	Credit	Trains
THB	WM	-	510	Yes	-	225C▲	474	D
WGB	SC	-	630	Yes	-	225A▲	21	D 5
BBG	LG	23:G16:2	1,030	Yes	-	225A▲	52	D 5
CGR	SC	-	890	Yes	-	175A▲	381	D
TGB	SW	8:K6:4	320	Yes	-	125E▲	349	6
CPR	TS	-	320	Yes	-	75F▲	38	6

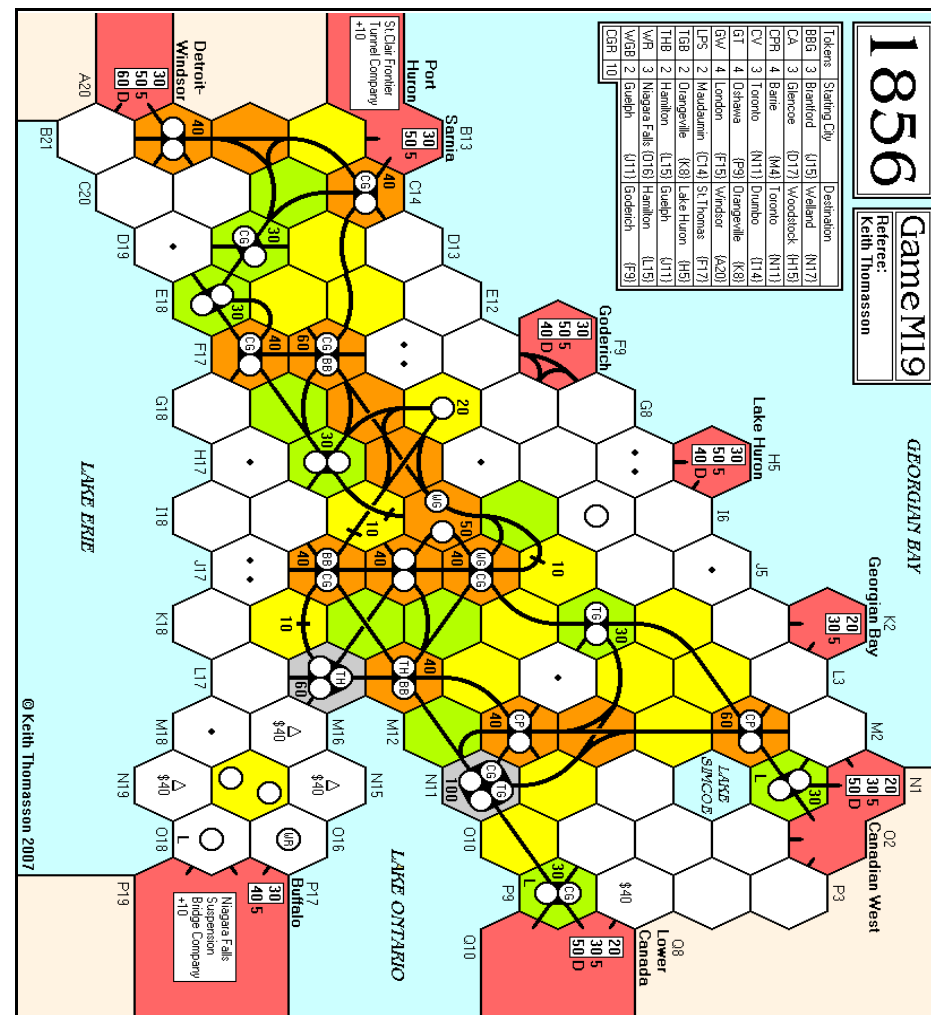
OR19	Pres	Lay	Run	Pay	Notes	Price	Credit	Trains
THB	WM	-	510	Yes	-	250C▲	525	D
WGB	SC	-	630	Yes	-	250A▲	21	D 5
BBG	LG	15:E18:2	1,050	Yes	-	250A▲	52	D 5
CGR	SC	-	910	Yes	-	200A▲	381	D
TGB	SW	9:L5:2	320	Yes	-	150D▲	445	6
CPR	TS	-	320	Yes	-	80F▲	38	6

Cash Flow	b/f	OR17	OR18	OR19	c/f	Value	%	Certs
Stephen Webb	1,534	752	782	794	3,862	6,562	20.2▲	11
Willem Moene	2,443	593	604	605	4,245	6,855	21.1▼	10½
Tony Sait	5	316	320	321	962	2,042	6.3▲	7½
Lyndon Gurr	3,191	1,011	1,050	1,068	6,320	9,770	30.1▼	11
Simon Cutforth	1,626	776	798	806	4,006	7,266	22.4▲	11

Portfolio	BBG	CPR	TGB	THB	WGB	WR	CGR
Stephen Webb	4	-	6P	-	-	-	4
Willem Moene	-	2	-	6P	3	-	1
Tony Sait	-	6P	1	1	-	-	1
Lyndon Gurr	6P	-	-	2	1	-	6
Simon Cutforth	-	2	-	-	6P	-	8P

Bank (new)	-	-	-	-	-	10P	-
Price (par)	100	65	90	75	100	100	100
Bank (pool)	-	-	3	1	-	-	-
Price (pool)	250A	80F	150D	250C	250A	-	200A
Company credit	52	38	445	525	21	-	381
Tokens	-	3	-	-	-	3	2
Trains	D 5	6	6	D	D 5	-	D

Bank cash: -8,857 Certificate limit: 11 Trains: 1 x '5', Diesels
Current operating order: THB, WGB, BBG, CGR, TGB, CPR



Are we done? I'm a little uncertain about this game - has it really finished...?

1st	Lyndon Gurr	9,770	30.1%
2nd	Simon Cutforth	7,266	22.4%
3rd	Willem Moene	6,855	21.1%
4th	Stephen Webb	6,562	20.2%
5th	Tony Sait	2,042	6.3%

No mistakes this time, the bank is dry and we are done. Congratulations to Lyndon, thanks to everyone for playing and serious apologies for some false endings earlier on. Next month we'll bury it once and for all.



1856-Y19

All the new trains generate revenue.

OR12

The WGB did not have a train during its last turn, having lost its '4' trains when the first Diesel was bought. It made a forced purchase of the '6' train at the end of its turn. That's why it didn't get to run.

When planning your tile lays, bear in mind that the 125 tiles only go on hexes marked L.

OR12	Pres	Lay	Run	Pay	Notes	Price	Credit	Trains
CV	SW	-	280	Yes	-	110D▲	158	6
CGR	RT	63:J13:1	410	Yes	-	100C▲	206	5 5
BBG	SW	123:L15:1	270	Yes	-	70E▲	27	D
TGB	RT	15:L13:5	620	Yes	-	70E▲	332	D 5
WGB	PB	64:112:4	280	Yes	-	70C▲	56	6
THB	MB	-	420	Yes	-	60E▲	126	D

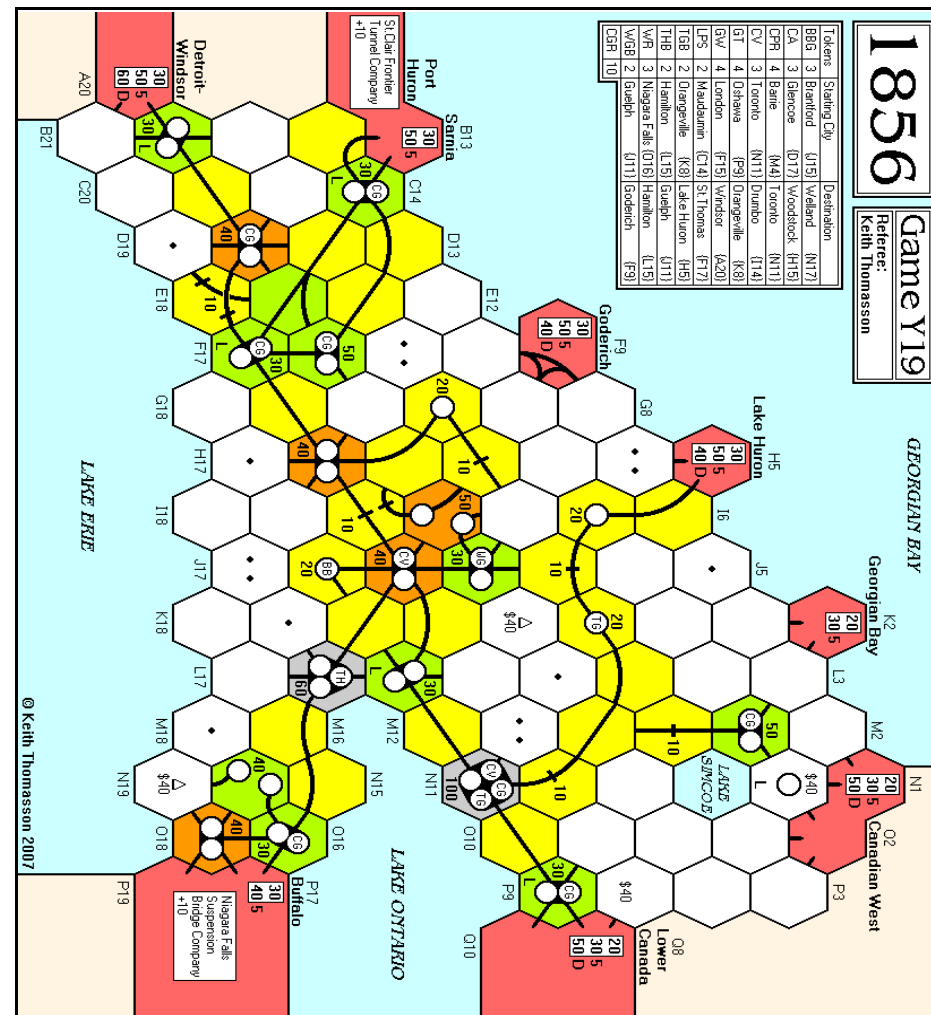
Cash Flow	b/f	OR12	c/f	Value	%	Certs
Peter Berlin	52	181	233	783	16.4▼	5
Mike Head	109	124	233	693	14.6▼	3
Martin Butcher	83	125	208	528	11.1▼	2
Rob Thomasson	171	495	666	1,686	35.4▲	8
Stephen Webb	37	247	284	1,074	22.5▼	7

Portfolio	BBG	CV	TGB	THB	WGB	CGR
Peter Berlin	-	-	-	-	5P	2
Mike Head	-	-	-	1	-	4
Martin Butcher	-	-	-	2P	-	2
Rob Thomasson	-	-	6P	-	-	6P
Stephen Webb	5P	4P	-	-	-	-

Bank (new)	4	3	-	4	3	-
Price (par)	75	100	100	100	100	100
Bank (pool)	1	3	4	3	2	6
Price (pool)	70E	110D	70E	60E	70C	100C
Company credit	27	158	332	126	56	206
Tokens	2	-	-	1	2	2
Trains	D	6	D 5	D	6	5.5

Bank cash: 9,471 Certificate limit: 10 Trains: Diesels
Current operating order: CV, CGR, BBG, TGB, WGB, THB

Tiles	Tile number/Availability					Three Operating Rounds between Stock Rounds											
Yellow	1/1	2/-	3/3	4/1	5/-	6/1	7/6	8/6	9/5	55/1	56/-	57/3					
	58/1	69/1															
Green	14/1	15/-	16/1	17/1	18/1	19/1	20/1	23/4	24/3	25/1	26/1	27/1					
	28/1	29/1	59/1	120/1	121/-												
Brown	39/1	40/1	41/3	42/3	43/2	44/1	45/2	46/2	47/2	63/1	64/-	65/1					
	66/1	67/1	68/1	122/1	125/3	126/1	127/1										
Grey	123/-	124/-															

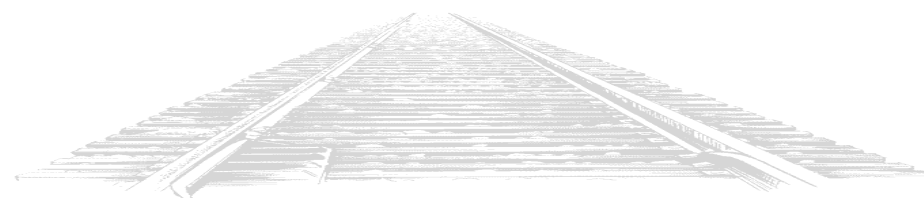


Orders required for the following rounds

By the early deadline

OR13, SR8

Adjudication can pause between rounds if requested



1856-D22

A couple of '3' trains come out and one private is bought in.

OR2 - SR3

OR2	Pres	Lay	Run	Pay	Notes	Price	Credit	Loans	Trains
GT	RL	9:O10:2	50	Yes	①	80C▲	150	100	2
CPR	JS	4:M6:1	50	Yes	① ②	70E▲	210	200	2 2
WR	MH	-	50	Yes	① ③	65F▲	40	200	3 2
LPS	TR	14:C14:3	60	Yes	① ④	65F▲	65	200	2
GW	WM	121:F15:1	70	Yes	① ③	65F▲	105	200	3.2

- Notes: ① Government loan secured
 ② 100 to the bank for a '2' train
 ③ 225 to the bank for a '3' train
 ④ 200 to Tony for the SCFTC private

Stock Round 3

	Mike	John	Richard	Tony	Willem
X	X	X	X	+ LPS new	X
X	X	X	X	+ LPS new	X
X	X	X	X	+ LPS new	X
X	X	X	X	X	Priority for SR4

Cash Flow	b/f	OR2	SR3	c/f	Value	%	Certs
Richard Lunn	25	35	0	60	340	18.7▼	3
Tony Robbins	20	238	-195	63	453	24.9▲	5
Willem Moene	10	38	0	48	348	19.1▼	4
Mike Head	20	35	0	55	350	19.2▼	3
John Shelley	5	25	0	30	330	18.1▼	4

Portfolio	Privates	BBG	CA	CPR	CV	GT	GW	LPS	TGB	THB	WGB	WR
Richard Lunn	CC, GLSC	-	-	-	-	2P	-	-	-	-	-	-
Tony Robbins	-	-	-	-	-	-	-	6P	-	-	-	-
Willem Moene	WSR	-	-	-	-	-	4P	-	-	-	-	-
Mike Head	NFSBC	-	-	-	-	-	-	-	-	-	-	3P
John Shelley	FT	-	-	4P	-	-	-	-	-	-	-	-

Bank (new)	10P	10P	6	10P	8	6	4	10P	10P	10P	7
Price (par)			70		80	65	65				65
Bank (pool)	-	-	-	-	-	-	-	-	-	-	-
Price (pool)			70E		80C	65F	65F				65F
Company credit			210		150	105	195				40
Tokens	3	3	3	3	3	3	1	2	2	2	2
Trains			2 2		2	3 2	2				3.2

Bank cash: 11,044 Certificate limit: 13 Trains: 3 x '3', 4 x '4'
 Current operating order: GT, CPR, WR, LPS, GW

Beware of a stock order like 'buy the cheapest share'. At this time, three companies tie for that honour, so with no other preferences given, such an order would not result in any shares being bought.

Tiles	Tile number/Availability							Two Operating Rounds between Stock Rounds						
Yellow	1/1	2/1	3/3	4/2	5/1	6/-	7/7	8/13	9/12	55/1	56/1	57/3		
	58/3	69/1												
Green	14/3	15/4	16/1	17/1	18/1	19/1	20/1	23/4	24/4	25/1	26/1	27/1		
	28/1	29/1	59/2	120/1										

1856

GameD22
Refer: Keith Thomasson

Tokens	Starting City	Destination
B86	3	Blancfort (J15) Wexford (N17)
CA	3	Glencoe (D17) Woodstock (H15)
CPR	4	Barrie (M4) Toronto (N11)
CV	3	Toronto (N11) Durham (J14)
GT	4	Oshawa (F9) Orangeville (K9)
GW	4	London (F18) Windsor (K20)
LPS	2	Windsor (F18) St. Thomas (F17)
TGB	2	Orangeville (K9) Lake Huron (H5)
THB	2	Hamilton (L15) Guelph (J11)
WR	3	Niagara Falls (D16) Hamilton (L15)
WGB	2	Guelph (J11) Goderich (F9)

Orders required for the following rounds	By the early deadline
OR3, OR4	Adjudication can pause between rounds if requested

1856-M22

Four companies come out at \$65, one at \$70.

PUBLICS

Stock Round 1 - Public Companies

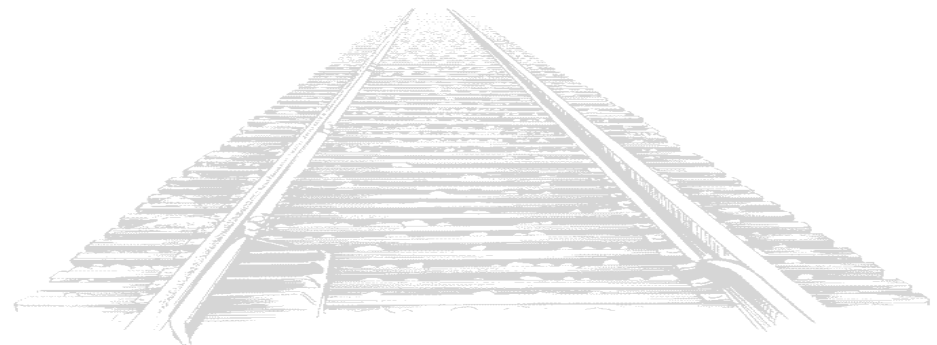
Tony	Rob	Willem	Mike	Lyndon
+ LPS/Pres {70}	✗	+ GW/Pres {65}	+ CPR/Pres {65}	+ GT/Pres {65}
+ LPS new	+ CA/Pres {65}	+ GW new	+ CPR new	+ GT new
✗	+ CA new	+ GW new	✗	✗
✗	✗	✗	Priority for SR2	

Cash Flow	b/f	Publics	c/f	Value	%	Certs
Mike Head	195	-195	0	295	19.9	3
Lyndon Gurr	230	-195	35	300	20.2	4
Tony Sait	225	-210	15	295	19.9	3
Rob Thomasson	195	-195	0	295	19.9	3
Willem Moene	260	-260	0	300	20.2	4

Portfolio	Privates	BBG	CA	CPR	CV	GT	GW	LPS	TGB	THB	WGB	WR
Mike Head	SCFTC	-	-	3P	-	-	-	-	-	-	-	-
Lyndon Gurr	FT, CC	-	-	-	-	3P	-	-	-	-	-	-
Tony Sait	GLSC	-	-	-	-	-	-	3P	-	-	-	-
Rob Thomasson	NFSBC	-	3P	-	-	-	-	-	-	-	-	-
Willem Moene	WSR	-	-	-	-	-	4P	-	-	-	-	-

Bank (new)	10	7	7	10	7	6	7	10	10	10	10
Price (par)		65	65		65	65	70				
Bank (pool)	-	-	-	-	-	-	-	-	-	-	-
Price (pool)		65F	65F		65F	65F	70E				
Company credit		195	195		195	260	210				
Tokens	3	3	4	3	4	4	2	2	2	2	3
Trains		-	-		-	-					
Bank cash: 10,895	Certificate limit: 13				Trains: 6 x '2', 5 x '3'...						
Current operating order:	LPS, GW, CPR, GT, CA										

Tiles	Tile number/Availability										One Operating Round between Stock Rounds		
Yellow	1/1	2/1	3/3	4/3	5/2	6/2	7/7	8/13	9/13	55/1	56/1	57/3	
	58/3	69/1											



1856

GameM22
Refer: Keith Thomasson

Tokens	Starting City	Destination
BBG	3 Bantled	(J15) Weland (N17)
CA	3 Glencoe	(D17) Woodstock (H15)
CPR	4 Barle	(M4) Toronto (N11)
CV	3 Toronto	(N11) Dumbo (J14)
GT	4 Dabena	(F9) Orangeville (K9)
GW	2 London	(F18) Windsor (K20)
LPS	2 Mandarum	(C14) St. Thomas (F17)
TGB	2 Orangeville	(K8) Lake Huron (H5)
THB	2 Hamilton	(L15) Guelph (J11)
WR	3 Niagara Falls	(Q16) Hamilton (L15)
WGB	2 Guelph	(J11) Guelph (F9)
CSF	10	

1856

GameM22

Refer: Keith Thomasson

DETROIT

St. Clair Frontier Tunnel Company +10

Port Huron

30 50 5 60 D

A20

E21

D19

E18

F17

G18

H17

I18

J17

K18

L17

M18

N19

P19

GEORGIAN BAY

Georgian Bay

30 50 5 20 30 5

K2

L3

M2

N1

O2

P3

Q3

R3

S3

T3

U3

V3

W3

X3

Y3

Z3

Orders required for the following rounds

By the early deadline

OR1, SR2



1870-U19

The last two connection runs are made.

OR15 - OR16

OR15	Pres	Lay	Run	Pay	Notes	Price	Credit	Trains
SSW	MB	-	-	390	Yes	-	325A	76
ATSF	LG	28:F7:1	-	380	Yes	-	275A	95
GMO	LG	14:B9:1	-	340	Yes	-	160E	260
SP	LG	29:C10:6	-	390	Yes	-	140A	348
MP	JS	24:L9:1	-	370	Yes	①	110D	210
MP	JS	Connection run	-	370	Yes	②	120D	210
TP	SW	Connection run	-	190	Yes	③	100B	114
TP	SW	146:M10:6	-	290	Yes	④	110B	161
FW	MB	-	-	440	Yes	-	90C	0
IC	MH	8:B17:2	-	650	Yes	⑤	82E	88
MKT	SW	9:E14:3	-	420	Yes	⑥	68G	188
SLSF	LG	25:L5:2	-	360	Yes	-	68E	0

- Notes: ① 100 to the bank for a token in K16
 ② Destination marker placed in J5
 ③ Destination marker placed in N17
 ④ 40 to the bank for a token in M14
 ⑤ 40 to the bank for terrain costs
 ⑥ 100 to the bank for a token in J5

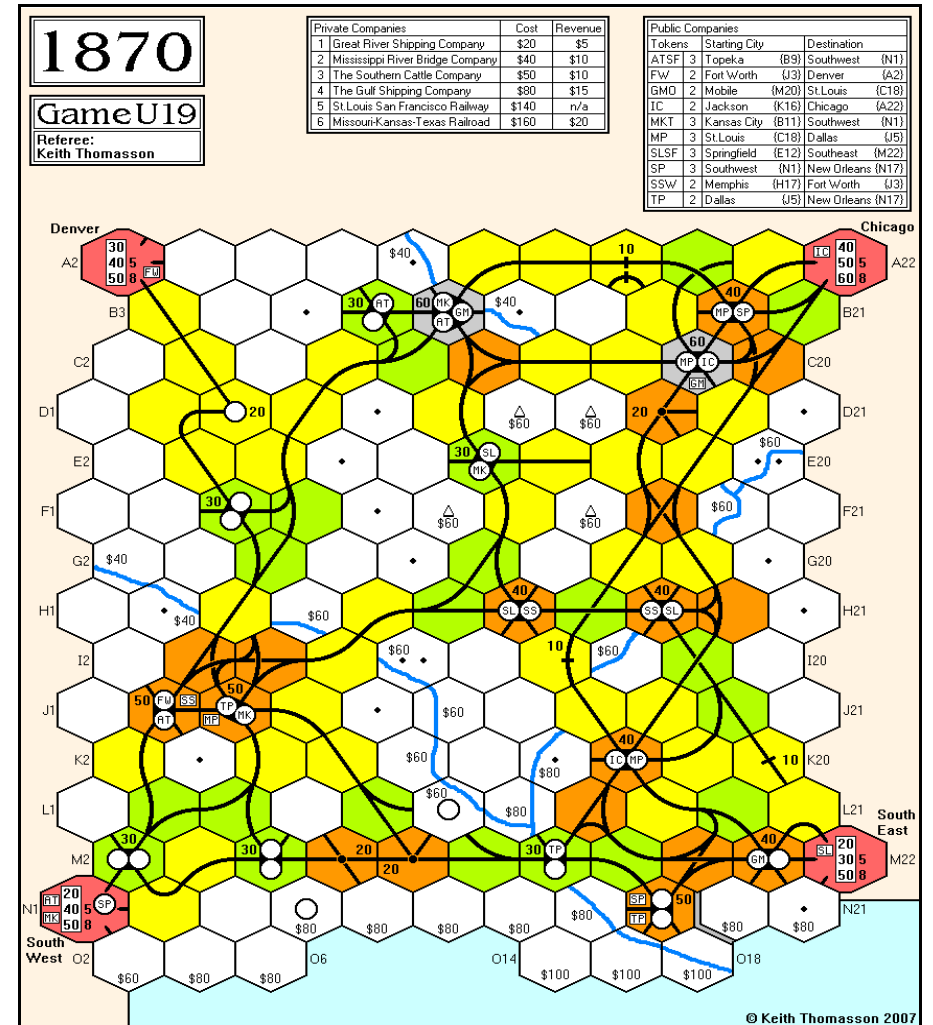
OR16	Pres	Lay	Run	Pay	Notes	Price	Credit	Trains
SSW	MB	-	-	360	Yes	-	350A	112
ATSF	LG	-	-	360	Yes	-	300A	131
GMO	LG	-	-	310	Yes	-	180E	291
SP	LG	-	-	270	Yes	①	160A	348
MP	JS	23:M12:3	-	380	Yes	-	140D	210
TP	SW	141:M8:3	-	290	Yes	-	120B	248
FW	MB	-	-	370	Yes	-	100C	0
IC	MH	16:A18:3	-	600	Yes	-	90E	88
MKT	SW	145:M8:1	-	430	Yes	-	72G	274
SLSF	LG	4:K20:1	-	370	Yes	-	72E	0

- Notes: ① The bank has run out of cash

Portfolio	ATSF	FW	GMO	IC	MKT	MP	SLSF	SP	SSW	TP
Lyndon Gurr	5P	-	5P	-	-	-	4P	6P	-	-
Stephen Webb	-	3	2	1	5P	-	-	3	-	5P
John Shelley	1	1	1	1	1	6P	3	-	3	1
Mike Hutton	3	-	-	6P	1	4	2	-	-	1
Martin Butcher	-	6P	-	2	1	-	1	1	6P	-

Bank (new)	-	-	-	-	-	-	-	-	-	3
Price (par)	100	72	68	76	68	76	100	90	76	100
Bank (pool)	-	-	1	-	-	-	-	-	-	-
Price (pool)	300A	100C	180E	90E	72G	140D	72E	160A	350A	120B
Company credit	131	0	291	88	274	210	0	348	112	248
Redeemed shares	1	-	1	-	2	-	-	-	1	-
Tokens	-	1	-	-	-	-	-	2	-	-
Trains	8	10	6	12.6	12	8	12	10	8	6
Bank cash: -2,662	Certificate limit: 13				Trains: 12's					
Current operating order:	SSW, ATSF, GMO, SP, MP, TP, FW, IC, MKT, SLSF									

Cash Flow	b/f	OR15	OR16	c/f	Value	%	Certs
Lyndon Gurr	1,371	738	645	2,754	6,402	23.5	16
Stephen Webb	270	832	674	1,776	3,966	14.5	17
John Shelley	1,147	940	683	2,770	5,738	21.0	17
Mike Hutton	1,412	962	766	3,140	5,476	20.1	16
Martin Butcher	1,110	745	665	2,520	5,704	20.9	15



Orders required for the following round *By the early deadline*
 OR17

1870-O20	Just one round, in which the first '6' train is bought.	OR9
----------	---	-----

Some of the tile counts for the yellow tiles were out, and in some cases prevented tiles being laid that you might have thought were available. I've recounted and corrected the tile list.

OR9	Pres	Lay	Run	Pay	Notes	Price	Credit	Trains
SP	SW	8:L3:3	8:L5:4	260	Yes	-	120E	97
SLSF	WM	14:L20:1	-	90	Yes	①	120D	19
GMO	SC	7:L21:4	-	160	Yes	-	100D	104
MP	RK	170:B11:4	-	90	No	②	82D	0
FW	WM	9:F3:1	9:E2:1	-	-	③	82B	326
IC	SC	29:I20:5	-	80	Yes	-	100B	624
MKT	DS	14:F5:2	-	110	Yes	-	90F	315
ATSF	DS	8:G6:5	-	-	-	③	76C	370
SSW	RK	-	-	110	No	④	68E	1
TP	RK	-	-	-	-	⑤	60E	583

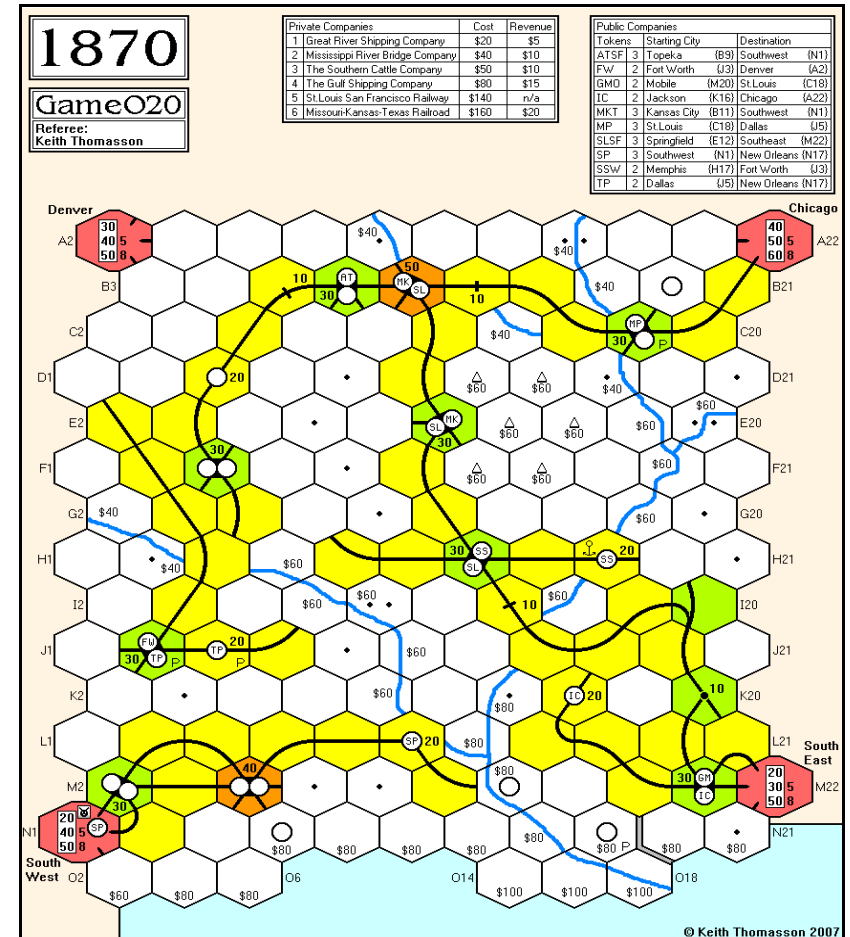
- Notes: ① 200 to the FW for a '4' train
 ② 92 to the SSW for a '4' train
 ③ 450 to the bank for a '5' train
 ④ 1,592 to the TP for a '3' train
 ⑤ 1,080 to the bank for a '5' train and a '6' train

Cash Flow	b/f	OR9	c/f	Value	%	Certs
Simon Cutforth	0	144	144	1,472	21.1	11/12
Don Smith	43	55	98	1,040	14.9	9
Stephen Webb	314	227	541	2,021	29.0	12/13
Willem Moene	32	63	95	1,427	20.5	11
Roger Krueger	19	26	45	1,013	14.5	8/10

Portfolio	ATSF	FW	GMO	IC	MKT	MP	SLSF	SP	SSW	TP
Simon Cutforth	-	-	6P	6P	-	-	-	-	1	1
Don Smith	6P	-	-	-	5P	-	-	-	-	-
Stephen Webb	-	-	1	-	1	1	2	7P	1	1
Willem Moene	-	6P	-	-	-	-	7P	-	-	-
Roger Krueger	-	1	-	-	-	3P	-	1	5P	3P

Bank (new)	4	3	3	4	-	2	-	-	2	4
Price (par)	82	90	82	90	76	100	100	72	90	100
Bank (pool)	-	-	-	-	4	2	-	1	-	1
Price (pool)	76C	82B	100D	100B	90F	82D	120D	120E	68E	60E
Company credit	370	326	104	624	315	0	19	97	1	583
Redeemed shares	-	-	-	-	-	2	1	1	1	-
Tokens	3+D	1+D	1+D	D	1+D	2+D	D	1+D	D	1+D
Trains	5	5	4	4	-	4	4	4	5	6.5
Bank cash: 8,638	Certificate limit: 13				Trains: 2 x '6', 3 x '8'...					
Current operating order:	SP, SLSF, GMO, IC, MKT, MP, FW, ATSF, SSW, TP									

Tiles	Tile number/Availability										Three Operating Rounds between Stock Rounds		
Yellow	1/1	2/1	3/3	4/4	5/2	6/1	7/6	8/-	9/12	55/1	56/1	57/1	
	58/3	69/1											
Green	14/-	15/-	16/2	17/2	18/2	19/2	20/2	23/4	24/4	25/3	26/2	27/2	
	28/2	29/1	141/1	142/2	143/1	144/1							
Brown	39/1	40/2	41/3	42/3	43/2	44/1	45/2	46/2	47/2	63/4	70/2	145/2	
	146/2	147/2	170/3										



Orders required for the following rounds

By the early deadline

OR10, OR11

Adjudication can pause between rounds if requested



1895-L20

The OB is aiming to fulfill its obligation.

OR11 - OR12

OR11	Pres	Lays	Run	Pay	Mines	Notes	Price	Credit	Trains
SD	RK	45:E19:3	-	220	Yes	100	-	190B▲	216 10H 8H
OB	RK	9:H4:2	9:J3:2	230	Yes	30	-	130D▲	339 8H
OME	MB	8:G9:3	-	250	No	30	-	80F▼	280 12H
STA	TF	15:H10:5	-	210	Yes	-	-	80F▲	41 12H
NS	MB	-	-	270	Yes	-	-	80E▲	61 10H

OR12	Pres	Lays	Run	Pay	Mines	Notes	Price	Credit	Trains
SD	RK	47:F20:3	-	220	Yes	100	-	215B▲	316 10H 8H
OB	RK	58:K2:3	8:L3:6	230	Yes	30	①	150D▲	335 8H
OME	MB	-	-	250	No	30	-	70F▼	560 12H
STA	TF	-	-	210	Yes	-	-	95F▲	62 12H
NS	MB	-	-	270	Yes	-	-	90E▲	91 10H

Notes: ① 80 to the bank for terrain costs

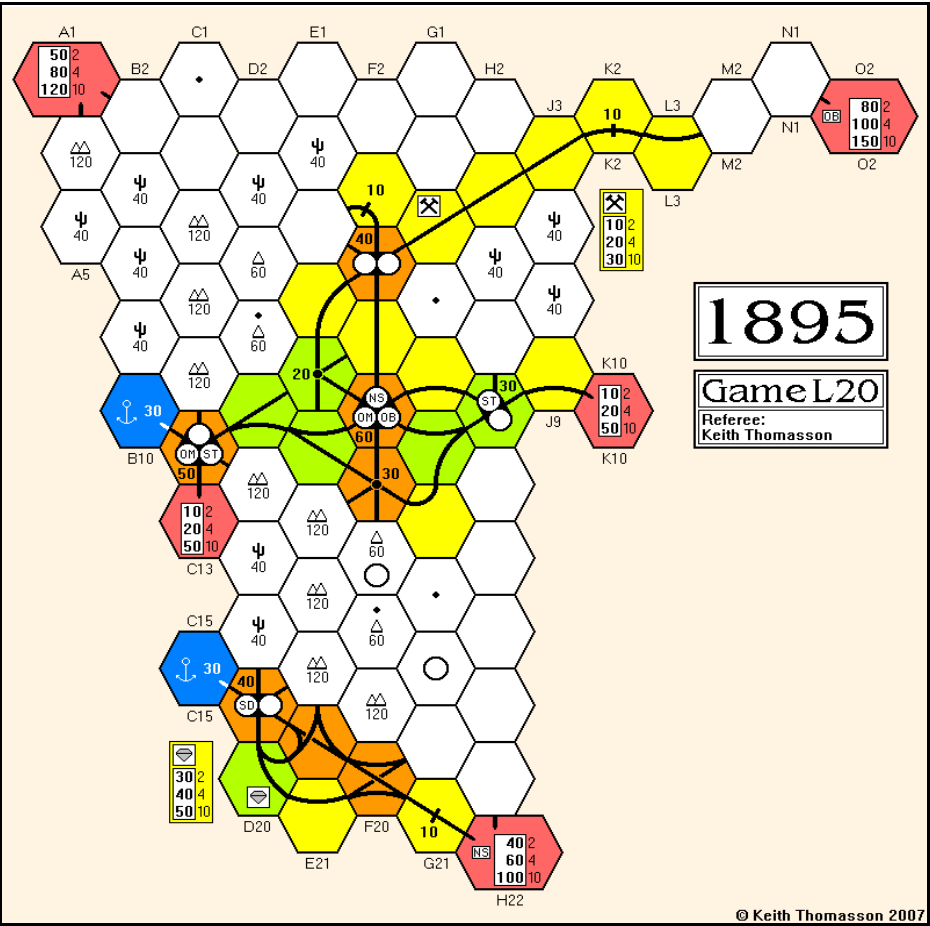
Cash Flow	b/f	OR11	OR12	c/f	Value	%	Certs
Roger Krueger	174	292	292	758	3,163	45.8▼	12
Tim Franklin	140	234	234	608	2,013	29.0▲	10
Martin Butcher	87	243	243	573	1,733	25.1▼	12

Portfolio	PC/Oblig	STA	OME	SD	OB	NS
Roger Krueger	OB	-	-	7P	6P	-
Tim Franklin	-	8P	-	3	-	-
Martin Butcher	-	-	5P	-	-	9P

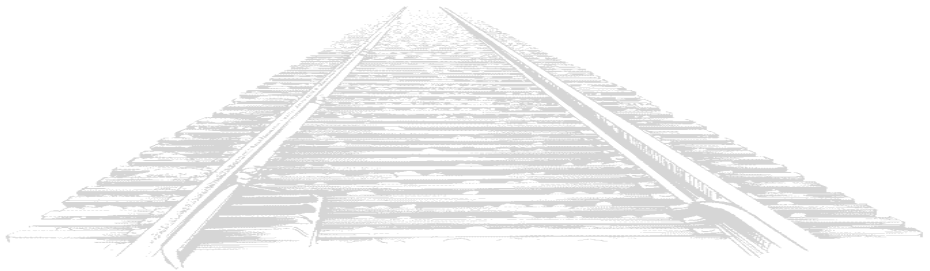
Bank (new)	1	-	-	2	-
Bank (pool)	1	5	-	1	1
Price	95F	70F	215B	150D	90E
Company credit	62	560	316	335	91
Tokens	2	1	2	1	1
Trains	12H	12H	10H 8H	8H	10H

Bank cash: 3,225 Certificate limit: 13 Trains: 5 x '16H'
Current operating order: SD, OB, STA, NS, OME

Tiles	Tile number/Availability					Three Operating Rounds between Stock Rounds									
Yellow	3/1	4/1	7/4	8/6	9/8	57/3	58/2	814/1	815/1						
Green	14/2	15/1	16/1	17/1	18/1	19/1	20/1	23/1	24/1	25/2	26/2	27/2			
	28/2	29/1	38/1	887/-	888/1										
Brown	39/1	40/1	41/1	42/1	43/1	44/1	45/-	46/1	47/-	70/1	125/1	849/-			
	850/-	889/-													



Orders required for the following rounds		By the early deadline
OR13, SR8	Adjudication can pause between rounds if requested	





1899-Z21

Don't miss the small ad
at the top of the next page.

OR3 - OR4

OR3	Pres	Lay	Run	Pay	Mail	Notes	Price	Credit	Trains
NRC	JS	57:E18:2	-	-	-	①	90A▼	820	3
FsR	AH	59:B13:6	140	Yes	40	②	90C▲	410	3 2
XzS	LG	995:K6:1	-	-	-	-	70C▼	87	3 2
Tt	DS	14:H11:3	130	Yes	35	③	76E▲	624	2 2
CSb	LG	994:E4:2	-	-	-	④	65F▼	408	3 2 2

- Notes: ① 180 to the bank for a '3' train
 ② 200 to the bank for terrain costs
 ③ 140 to Don for the YSC private - places ferry link and free token on E12
 ④ 2 to the XzS for two '2' trains and 180 to the bank for a '3' train

OR4	Pres	Lay	Run	Pay	Mail	Notes	Price	Credit	Trains
FsR	AH	57:C10:2	160	Yes	40	-	100C▲	466	3 2
NRC	JS	57:D19:2	40	Yes	20	-	100A▲	840	3
Tt	DS	8:D13:3	130	Yes	35	-	82E▲	713	2 2
XzS	LG	4:K8:3	80	Yes	35	①	76C▲	87	3 2
CSb	LG	2:D3:1	110	Yes	50	②, ③	67F▲	298	3 2 2

- Notes: ① 80 to the bank for terrain costs
 ② 120 to the bank for terrain costs
 ③ 40 to the bank for a token on the Inner Mongolia off-board area

Cash Flow	b/f	OR3	OR4	c/f	Value	%	Certs
Alan Harvey	15	102	114	231	933	25.3▲	7
Lyndon Gurr	59	0	114	173	1,031	27.9▼	10
John Shelley	108	10	34	152	792	21.5▼	6
Don Smith	46	233	86	365	933	25.3▲	6

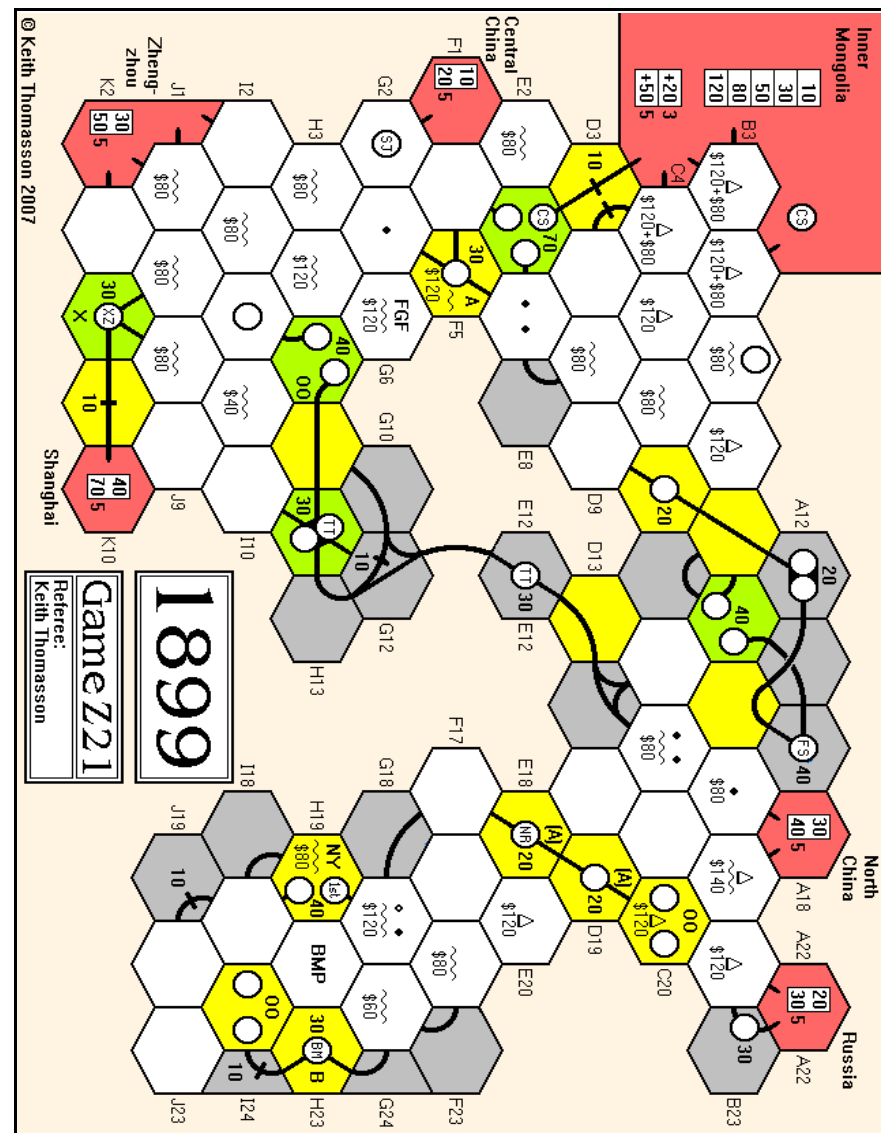
Portfolio	Privates	1st	B&M	CSb	FsR	NRC	Siz	Tt	XzS
Alan Harvey	BMP	-	-	-	6P	-	-	1	-
Lyndon Gurr	-	-	-	6P	-	-	-	-	6P
John Shelley	FGF	-	-	-	-	6P	-	-	-
Don Smith	-	-	-	-	-	-	-	6P	1

Bank (new)	10P	10P	4	3	3	10P	-	3
Price (new)			67	90	100		82	100
Bank (pool)	-	-	-	1	-	-	3	-
Price (pool)			67F	100C	100A		82E	76C
Company credit			298	466	840		713	87
Tokens	3	3	1	1	3	4	2	1
Trains			3 2 2	3 2	3		2 2	3 2

Bank cash: 13,675 Certificate limit: 16 Trains: 1 x '3', 4 x '4'
 Current operating order FsR, NRC, Tt, XzS, CSb

Tiles	Tile number/Availability										Two Operating Rounds between Stock Rounds			
Yellow	1/1	2/1	3/2	4/3	7/5	8/10	9/9	55/1	56/1	57/2	58/3	69/1		
Green	14/2	15/4	16/1	18/1	19/1	20/1	23/3	24/3	25/1	26/1	27/1	28/1		
	29/1	54/1	59/1	981/1	982/1	991/1	992/1	993/1	994/-	995/-				

Small Ad: Any company wishing to acquire control of the FGF private company is invited to contact the FGF's company secretary, Mr John Shelley.



Orders required for the following round

By the early deadline

SR4

18KAS-O19

It's run and pay,
except for the NYC.

OR17

The B&M only ran for \$380 in OR16. Bad route planning on my part.

OR17	Pres	Lay	Run	Pay	Notes	Price	Credit	Trains
B&O	MB	-	550	Yes	-	300A	50	6
B&M	WM	-	380	Yes	-	240B	0	D
CPR	LQ	42:H16:4	470	Yes	-	200C	0	6
C&O	TS	23:J16:6	410	Yes	①	160A	190	D
PRR	AH	-	460	Yes	②	155C	3	5
NYNH	WM	-	350	Yes	-	130D	246	5
Erie	AH	-	300	Yes	-	100C	0	5
NYC	LQ	-	-	-	-	10C	0	

Notes: ① Token not laid as there were two options and neither was specified
② The bank has run out of cash

Cash Flow	b/f	OR17	c/f	Value	%	Certs
Willem Moene	1,736	532	2,313	4,763	18.7▼	13
Martin Butcher	2,491	655	3,155	6,335	24.9▼	13/14
Tony Sait	1,252	532	1,811	4,216	16.5▲	12
Lyndon Gurr	2,075	575	2,650	4,995	19.6▲	12/13
Alan Harvey	2,032	626	2,667	5,167	20.3▲	13

Portfolio	B&M	B&O	C&O	CPR	Erie	NYC	NYNH	PRR
Willem Moene	5P	-	-	1	4	-	5P	-
Martin Butcher	1	6P	5	1	-	1	1	-
Tony Sait	3	1	5P	1	1	-	1	1
Lyndon Gurr	-	1	-	6P	1	2P	2	3
Alan Harvey	1	2	-	1	4P	-	1	6P

Bank (new)	-	-	-	-	-	3	-	-
Price (new)	90	100	90	76	100	76	67	71
Bank (pool)	-	-	-	-	-	4	-	-
Price (pool)	240B	300A	160A	200C	100C	10H	130D	155C
Company credit	0	50	190	0	0	0	246	3
Tokens	2	2	1	2	2	4	1	1
Trains	D	6	D	6	5	-	5	5
Bank cash: -1,085	Certificate limit: 13						Trains: Diesels	

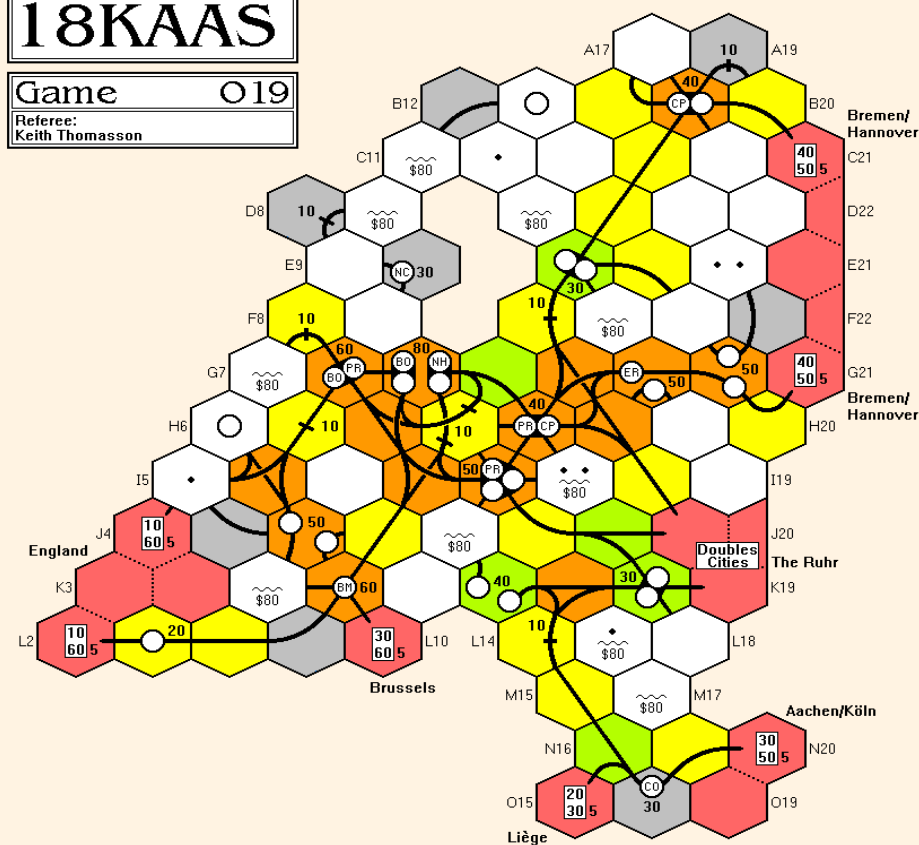
For a fairly straightforward 1830 variant, this one caught me out a few times, with the NYC never getting connected but me trying to force a train on it, and the track around the central group of towns getting quite tricky to trace at times. But we're there, and Martin has the victory.

1st	Martin Butcher	6,335	24.9%
2nd	Alan Harvey	5,167	20.3%
3rd	Lyndon Gurr	4,995	19.6%
4th	Willem Moene	4,763	18.7%
5th	Tony Sait	4,216	16.5%

Congratulations, Martin. Comments next time will be welcome. Anyone want to try another?

18KAAS

Game O19

Referee:
Keith Thomasson

© Keith Thomasson 2007



6 NIMMT! 12

Jim takes top spot.
Top on points, that is.

ROUND 8

Hand 1 (1-104)

	90		83
53	86		65
48	85		59
44	71	95	58
32	50	92	55
1/8	2/10	3/3	4/12

Steve (32) takes row 1 for 5 pts,
Mick (44), Sharon (48), Jim (53),
Michael (65), John (83), Tim (92) takes
row 3 for 9 pts, Colin (95).

Hand 3 (1-84)

		52	84
		23	83
		22	80
63		20	79
59	82	13	75
1/2	2/1	3/11	4/8

Michael (13) takes row 3 for 4 pts,
Jim (20), Mick (22), Steve (23),
Colin (52), Sharon (59) takes row 1 for 7
pts, Tim (63), John (82) takes row 2 for
10 pts.

Player	Hand 1	Hand 2	Hand 3	Hand 4	Overall Score
Michael Graystone	1	1	4	5	11
Mick Haytack	0	19	0	3	22
Tim Franklin	14	5	0	12	31
John Colledge	0	0	18	22	40
Sharon Khan	27	9	22	0	58
Colin Sharpe	24	7	22	5	58
Steve Ham	5	13	22	20	60
Jim Reader	8	38	2	14	62

Orders required

Rounds nine and ten - round nine cards for each hand, ten will be automatic



ACQUIRE 46

No mergers, just growth.

ROUND 9

Lyndon 2-H Buys 3 American @ £400.
Tony 11-E Buys 3 Festival @ £900.
Bob 9-I Buys 1 Festival @ £900, 2 Continental @ £400.
Willem 10-B No purchases.
John 6-D No purchases.
Lyndon 1-I Buys 3 American @ £400.

1-A		3-A	4-A		6-A	L	8-A	F	F	F	12-A
	2-B	L	L		5-B	L	L	8-B	F	F	12-B
1-C		3-C	L	L	L	L	8-C	F	F	F	F
1-D	2-D	C	4-D	5-D	L	7-D	A	9-D	F	F	12-D
I	2-E	C	4-E	5-E	6-E	7-E	A	9-E	F	F	F
I	2-F	3-F		5-F	W	7-F	A	9-F	F	F	12-F
I	2-G		4-G	W	W	W	8-G	9-G	10-G	F	F
1-H	T	3-H		5-H	W	7-H	8-H	9-H	F	F	F
T	T	T	4-I	W	W	7-I	8-I		10-I	11-I	12-I

	Lux	Tow	Ame	Fes	Wor	Con	Imp	Cash	Value
Bob Coull	1	-	1	9	-	10	-	£2,800	£26,700
Willem Moene	9	9	6	-	-	-	6	£4,500	£32,400
John Marsden	9	1	3	-	8	-	2	£300	£27,900
Lyndon Gurr	-	12	9	2	3	6	-	£1,500	£29,700
Tony Wilcock	-	3	-	9	-	-	-	£7,400	£23,500
Bank Stock	6	-	6	5	14	9	17		
Chain Size	10	4	3	22	7	2	3		
Chain Value	600	400	400	900	700	400	500		

Playing sequence

Tony, Bob, Willem, John, Lyndon, Tony again





ACQUIRE 47

We welcome Tower to the hotel market.

ROUND 3

Colin 12-A Buys 3 Luxor @ £200.
 Simon 6-C Buys 3 Luxor @ £200.
 Willem 10-H Forms Tower, one free share. Buys 3 Luxor @ £200.
 Michael 10-B Buys 3 Tower @ £200.
 John 3-I Buys 3 Festival @ £300.
 Colin 5-D Buys 2 Luxor @ £200, 1 Imperial @ £700.

1-A	2-A	3-A	A	5-A	6-A	7-A	8-A	I	I	I	I
1-B	2-B	3-B	A	5-B	6-B	7-B	8-B	9-B	I	11-B	12-B
1-C	2-C	3-C	4-C	5-C		7-C	8-C	9-C	10-C	L	L
	2-D	3-D	4-D		6-D	7-D	8-D	9-D	10-D	11-D	12-D
1-E	2-E	3-E	4-E	5-E	6-E	7-E	8-E	9-E	10-E	11-E	12-E
1-F		3-F	4-F	5-F	C	7-F	8-F	9-F	10-F	11-F	12-F
1-G	2-G	3-G	4-G	5-G	C	C	8-G	9-G	10-G	11-G	12-G
F	F	3-H	4-H	5-H	C	7-H	8-H	T	T	11-H	12-H
1-I	2-I		4-I	5-I	6-I		8-I	9-I	10-I	11-I	12-I

	Lux	Tow	Ame	Fes	Wor	Con	Imp	Cash	Value
Michael Graystone	7	3	-	-	-	-	-	£4,200	£10,200
John Colledge	4	-	-	3	-	-	3	£3,300	£17,100
Colin Sharpe	5	-	4	-	-	-	1	£3,400	£14,300
Simon Brooks	3	-	-	-	-	3	-	£3,600	£12,000
Willem Moene	6	1	-	1	-	1	-	£4,800	£13,600
Bank Stock	-	21	21	21	25	21	21		
Chain Size	2	2	2	2	-	4	5		
Chain Value	200	200	300	300	-	600	700		

Playing sequence

Simon, Willem, Michael, John, Colin, Simon again



ACQUIRE 48 {SP}

Two more Powers are exercised.

ROUND 2

Michael (Uses 'Place 4 Tiles' Power)
 5-A
 6-A Forms Festival, one free share.
 3-G
 4-G Forms American, one free share. Buys 3 Festival @ £300.
 John (Uses 'Take 5 Tiles' Power)
 9-A Forms Continental, one free share. Buys 3 Tower @ £200.
 Colin 9-E Buys 3 Luxor @ £300.
 Richard 9-F Forms Worldwide, one free share. Buys 3 Worldwide @ £300.
 Michael 11-I Buys 3 Festival @ £300.

1-A	2-A	3-A	4-A	F	F	7-A	8-A	C	C	11-A	12-A
1-B	2-B	3-B	4-B	5-B	6-B	7-B	8-B	9-B	10-B	11-B	12-B
1-C	2-C	3-C	4-C	T	6-C	7-C	L	L	10-C	11-C	12-C
1-D	2-D	3-D	4-D	T	6-D	7-D	L	9-D	10-D	11-D	12-D
1-E	2-E	3-E	4-E	5-E	6-E	7-E	8-E	W	10-E	11-E	12-E
1-F	2-F	3-F	4-F	5-F	6-F	7-F	8-F	W	10-F	11-F	12-F
1-G	2-G	A	A	5-G	6-G	7-G	8-G	9-G		11-G	12-G
1-H	2-H	3-H	4-H	5-H	6-H	7-H	8-H	9-H	10-H	11-H	12-H
1-I	2-I		4-I	5-I	6-I	7-I	8-I		10-I		12-I

	Lux	Tow	Ame	Fes	Wor	Con	Imp	Cash	Value
Richard Lunn	-	4	-	-	4	-	-	£4,500	£13,000
Michael Graystone	4	-	1	7	-	-	-	£3,600	£17,700
John Colledge	-	3	-	-	-	1	-	£5,400	£13,400
Colin Sharpe	6	-	-	-	-	-	-	£4,200	£9,000
Bank Stock	15	18	24	18	21	24	25		
Chain Size	3	2	2	2	2	2	-		
Chain Value	300	200	300	300	300	400	-		
Powers used:	Richard: None		Michael: T5/P4		John: T5		Colin: None		

Playing sequence

John, Colin, Richard, Michael, John again





AGE OF STEAM 1

New territory,
new challenges.

NEW GAME

Our first game will use the first map for the game, the Great Lakes/Rust Belt map that comes with the original game. The four players start in the following playing order:

Michael Longdin	29 Woolborough Road, Crawley, West Sussex, RH10 8HE
Sharon Khan	2 Rectory Road, Campton, Shefford, SG17 5PF
Mike Hutton	57 Ascension Road, Romford, Essex, RM5 3RT
Marcus Pratt	7 York Villas, Brighton, BN1 3TS

Copies of the map are enclosed for all of you, with a tile sheet on the back. I've used 18xx tile numbers on these sheets rather than introduce a new numbering system, or force you to describe the tiles you want to lay.

Your maps show the goods that have been drawn for each city, and the goods display is on the opposite page.

	Engine	Shares	Income	Cash	VPs
Mike Hutton	1	2	0	10	0
Sharon Khan	1	2	0	10	0
Michael Longdin	1	2	0	10	0
Marcus Pratt	1	2	0	10	0

Exactly what happens now is down to you. What definitely happens is that you let me know how many additional shares you'll be taking, if any, and then bid for playing order. Once the playing order is determined, you need to select the actions you'll take for the first round - possibly making that conditional on the position you got in the turn order.

If you don't provided enough options to select an action, I'll pick the first of Locomotive, First Build, First Move or Engineer that is free. By all means propose a different default priority, but if you provide four actions in preference order, this should not be needed.

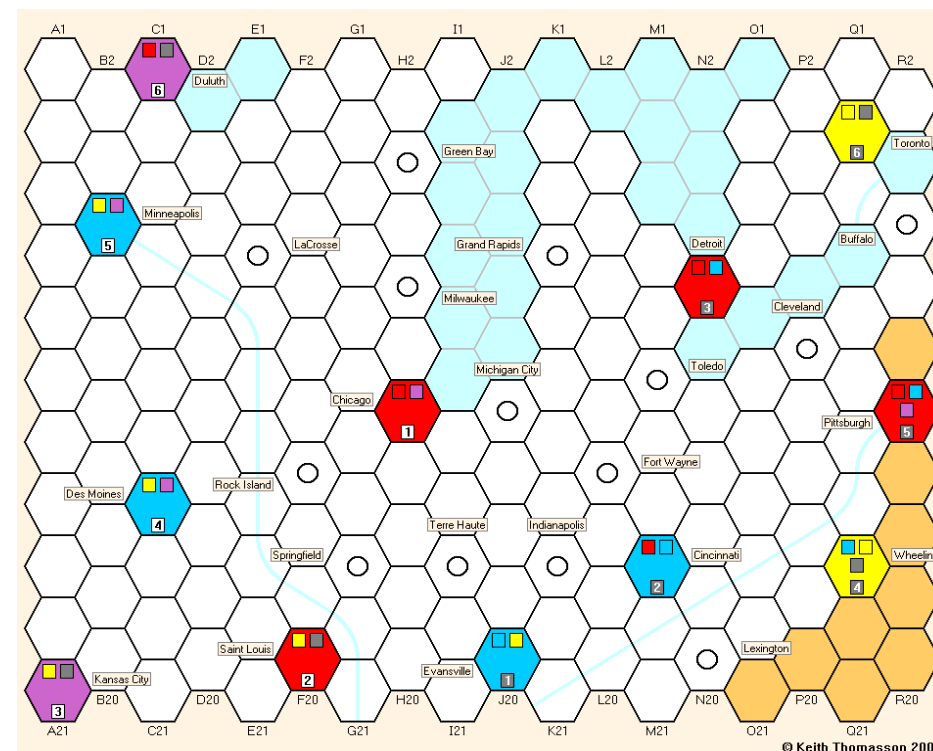
It's quite possible you can also order for the rest of the first round. The Railroad Tycoon players have been happily ordering for three rounds at a time, so I would expect this will be no harder. The playing order will affect things more than the actions you select, I should think. Please give it a go, as being able to run a compete round each month will halve the time it takes to complete the game.

What would cause that to unravel would be if someone ordered a preference to build one section of track without considering whether someone else could have built it first, so alternatives will be required for this and for goods movement. What I'm not comfortable with is someone asking me to build the best section of track or move the best goods cube. That would mean I'm playing the game for you rather than acting as the referee.

The actions you can choose from are:

First Move, First Build, Engineer, Locomotive, Urbanization, Production, and Turn Order Pass.

You can ignore Production for the first round, as there's no room for new goods.



Goods Display



Orders required

Please give a preference list for a colour to be used to mark your track

Bids for playing order, select actions and possibly the rest of your first turn



BREAKING AWAY 16

Gordon takes second place in the second sprint.

ROUND 9

Pos	Riders	New
1st	Thomas [20 pts]	
85	Gordon [8 pts]	13
84	-	
81	-	
80	-	
73	-	
72	Odysseus James	3
71	Robin Hood Clyde	5
70	Inky Dixen	7
69	Blinky	9
68	Donner Pinky	10
67	Rudolph	11
66	Blitzen Pluto	12
65	Mars Nimrod	15
64	Coagulant	17
63	Latex Former Jupiter	18
62	Henry Oven	21
61	William Tell	23
60	Earth	24



Apart from Gordon, the remaining riders form an unbroken string from 72 back to 60, giving the riders at the back some rather nice replacement cards.

The second sprint will probably be fully scored next time.

Orders required
Cards for round ten



BREAKING AWAY 17

No accounting problems with the chosen cards.

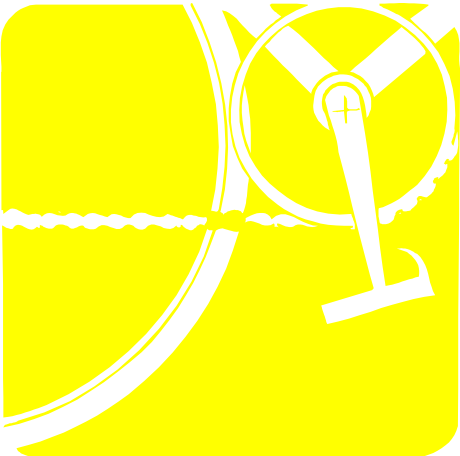
SET UP

Kevin Lee	<i>Ships Ahoy</i>
A Mayflower	3 7 10 10
B Endeavour	2 8 15
C Victory	3 6 11
D Discovery	1 6 9
Richard Lunn	<i>Mustn't Grumble</i>
A Terry	1 3 11 15
B Fran	4 6 15
C Deadly	1 5 14
D Boggy	1 5 10
Jim Reader	<i>Otherland</i>
A Orlando Gardner	5 10 15
B Xabbu	2 9 14
C Mister Sellars	3 6 11
D The Other	4 4 8

Joakim Spångberg	<i>Kling Klang Radfahrrers</i>
A Ralf	5 6 7 12
B Florian	6 9 10
C Wolfgang	4 7 9
D Karl	3 6 7
Allan Stagg	<i>Destiny's Angels</i>
A Harmony	1 2 12 15
B Melody	3 7 15
C Rhapsody	2 3 15
D Symphony	1 3 12
Roger Trethewey	<i>NCIS</i>
A Gibbs	2 13 15
B DiNozzo	2 8 15
C Abby	2 3 15
D McGee	2 3 11

This game will be to version 4.3 of the rules, so no replacement card will be above 15 and the breaking away bonus is only given for the first turn a rider is on their own out front. As with the original rules, overcrowding after the first cards are played can reduce your replacement card to a three.

Orders required
Cards for round one





BUS BOSS 297-VSW

All loose destinations are brought into the network.

ROUND 9

The Valleys of South Wales

Round 9 Runs			BRK	SWALK	PEAR	BUM	RR	
6	K♦ Blaenavon 9♥ Pontycymmer	① SWALK 15 ① BUM 15				+8		23 7
17	9♠ Blaengwynfi 10♦ Ebbw Vale	① RR 30 ✕ BUM				-5	+5	25 5
19	6♠ Swansea Q♦ Abergavenny	① BUM 16 ② BROOKS 9 ③ SWALK 5	+4/-4			+4/-4		16 9 5
20	J♣ Merthyr Tydfil 2♥ Barry	① BUM 16 ② BROOKS 7 ② RR 7 ✕ SWALK		-3			+1	13 8 6 3
21	J♦ Brynmawr 8♥ Porthcawl	① BUM 16 ② SWALK 9 ③ PEAR 5			+2/-3 -3			15 6 9
22	9♦ Tredegar 3♠ Treorchy	① PEAR 20 ② BUM 10			+1/-2	+2/-1		21 9
24	J♠ Neath A♥ Penarth	① PEAR 11 ① SWALK 10 ③ RR 5 ④ BROOKS 4	-1	-4	+4		+1	7 14 4 5
25	5♥ Cardiff 7♠ Port Talbot	① PEAR 13 ① SWALK 12 ③ RR 5			+1		-1	12 12 6
26	3♠ Ystalyfera 4♣ Ystrad	① PEAR 20 ② RR 10 ✕ SWALK		-9 -3	-1		+1	12 6

Round 9 Routes

Pontypool Expressways Are Rampant (PEAR) (Kevin Lee, Pink)
Cowbridge - Llantwit Major, Cowbridge - Talbot Green (10)

South Wales Kiss (SWALK) (Bob Coull, Black)
Maesteg - Glycorrgw, Brynmawr - Abertillery (11)

Robertson's Routemasters (RR) (Simon Robertson, Blue)
Bridgend - Llantwit Major (7)

Bloody Useless Management (BUM) (Jim Reader, Yellow)
Bridgend - Nantymoel, Porth - Ferndale (12)

Buses Running On Own Kinetic Servomechanism (BROOKS) (Simon Brooks, Orange)
Hirwaun - Merthyr Tydfil, Rhoose - Llantwit Major (11)

Scores

	Runs:	6	17	19	20	21	22	24	25	26	Routes	Score
BUM	104	7	5	16	13	15	9	-	-	-	-12	157
RR	96	-	25	-	6	-	-	4	6	6	-7	136
SWALK	71	23	-	5	3	6	-	14	12	12	-11	135
BROOKS	112	-	-	9	8	-	-	5	-	-	-11	123
PEAR	44	-	-	-	-	9	21	7	12	12	-10	95

Round 10 Runs

- 7. 10♥ - 6♣ Nantymoel to Tonypandy
- 8. 10♠ - 4♦ Glyncorrgw to Risca
- 9. K♥ - 8♦ Talbot Green to Abertillery
- 23. 5♣ - 7♥ Ferndale to Llantwit Major
- 27. 8♦ - Q♥ Abertillery to Cowbridge
- 28. A♦ - 5♥ England to Cardiff
- 29. 10♠ - 2♣ Glyncorrgw to Aberdare
- 30. 7♦ - J♣ Blackwood to Merthyr Tydfil
- 31. 8♠ - 6♦ Maesteg to Pontypool
- 32. 7♣ - 7♥ Porth to Llantwit Major
- 33. 9♠ - 10♣ Blaengwynfi to Caerphilly
- 34. 10♥ - 6♠ Nantymoel to Swansea
- 35. K♦ - 7♠ Blaenavon to Port Talbot

Runs	Routes
Enter up to 5	Buy in the order Kevin, Simon B, Bob, Simon R, Jim



BUS BOSS 299-NWA

Oswestry was this month's hot pick.

ROUND 4

North Wales

Graystone Runs Ugly Brown Buses Yet-Again (GRUBBY) (Michael Graystone, Brown)
Llangollen - Ruabon - Oswestry, Conwy - Llandudno 67 - 12 55

Llangollen Electric Engine Korporation (LEEK) (Colin Sharpe, Red)
Colwyn Bay - Abergele - Rhuddlan - Holywell 67 - 12 55

Holywell Expressways Are Rampant (HEAR) (Kevin Lee, Blue)
Llanfyllin - Oswestry - Ruabon 79 - 12 67

Ann Robinson Fan Club (ARFC) (Steve Ham, Orange)
Rhuddlan - Abergele - Colwyn Bay, Corwen - Y Bala 65 - 12 53

Machynlleth's Attractive Road Services (MARS) John Marsden, Green)
Machynlleth - Aberdyfi, Machynlleth - Aberystwyth 66 - 12 54

Routes
Buy in the order Colin, Kevin, Steve, John, Michael





Bus Boss 300-KYR

It looks awfully tight in there.

ROUND 3

BROOKS gets a refund of one as I overcharged for his build last time.

Kyrzygia

Highland and Lowlands Lines (HILLS) (Jim Reader, Yellow)

Tash-Kumyr - Kara-Kul - Toktogul 77 - 10 67

Small Mountainous Asian Republic Travel (SMART) (Bob Coull, Black)

Dostuk - At-Bashy, Dostuk - Naryn 79 - 10 69

Graystone Runs Ugly Brown Buses Yet-again (GRUBBY) (Michael Graystone, Brown)

Tash-Kumyr - Kara-Kul, Osh - Gul'Cha 76 - 10 66

Robertson's Routemasters (RR) (Simon Robertson, Blue)

Uzgen - Osh. Kochkorka - Naryn 76 - 12 64

Buses Running On Own Kinetic Servomechanism (BROOKS) (Simon Brooks, Orange)

Dzhalal-Abad - Osh, Min-Kush - Kochkorka 77 - 12 65

Routes

Buy in the order Bob, Michael, Simon R, Simon B, Jim



Bus Boss 301-CRO

Are you ready to drive your buses in South London?

NEW GAME

This game takes place in Croydon, rather more local to me than the Kyrzygia map. That's not to say that I've actually been there, but I've driven past it. The company directors will be dealing in this order:

Jim Reader 55A Yamate-Cho, Naka-ku, Yokohama 231-0862, Japan

Mike Hutton 57 Ascension Road, Romford, Essex, RM5 3RT

Roger Trethewey Sea Pines, Hesketh Road, Torquay, Devon, TQ1 2LN

Joakim Spangberg Riddaregatan 28, SE-352 36 VÄXJÖ, Sweden

Rob Thomasson 205 Tolcarne Drive, Pinner, Middlesex, HA5 2DN

Maps enclosed for all. Roger and Joakim will find rules enclosed. The rest of you should already have copies. Let me know if you need a set, or get them from the web site - www.fwtwr.com/postal_games/bus_boss.htm.

Routes

Buy in the order Jim, Mike, Roger, Joakim, Rob

Don't forget company names and colour preferences



NEW ENGLAND RAILWAYS 8

The challenge is for second place.

ROUND 11

Auctions	Bids:	SK	MB	TW	MP
11a: Boston & Gloucester, Portsmouth (8)		1	2	3	4
Build roll: 9 (built)		-	5	*6*	

Commodity Movement		SK	MB	TW	MP
	Income:	23	12	18	17
Sharon Goods	New London to Middleboro	3	1	-	-
Martin Goods	Lowell to New Haven	1	3	1	-
Marcus Food	Providence to Springfield	2	-	-	3
Sharon Cotton	Rutland to Manchester	3	-	-	1
Martin Goods	Lowell to New Haven	1	3	1	-
Tony Coal	Portsmouth to Lowell	-	-	2	1
Marcus Food	Burlington to Providence	2	-	-	3
Market loss number:	10	Income lost:	3	-1	-2
		Income:	32	18	20

Bank Loans	Acquired	Total	Interest	Retired	c/f
Sharon Khan	-	-	-	-	-
Martin Butcher	-	-	-	-	-
Tony Wilcock	-	10	-2	-10	-
Marcus Pratt	-	-	-	-	-

Cash Flow	Sharon	54	Martin	50	Tony	42	Marcus	61
Balance b/f		83		28		6		18
Auctions	-	83	-	28	-6	0	-	18
Income	+32	115	+18	46	+20	20	+22	40
Interest	-	115	-	46	-2	18	-	40
Retired Loans	-	115	-	46	-10	8	-	40
Railway Links	+54	169	+50	96	+42	50	+61	101
Final Cash		169		96		50		101

Sharon finishes way ahead of the usual scores. I hope everyone kept all the reports so that they can go back and work out how she did it. Congratulations, Sharon, good win.

1st	Sharon Khan	169
2nd	Marcus Pratt	101
3rd	Martin Butcher	96
4th	Tony Wilcock	50

Marcus was able to keep a few points ahead of Martin for second place. Comments next time will be welcome as we put the game to rest.



OUTPOST 24

Martin gets a Moon Base
to increase his lead.

ROUND 15

Commander Actions

Martin Auctioned a Moon Base for 201 and got it (o:3 w:7,8,9 t:10,11,12,44,44 m:17,17,20)

Lyndon Bought one New Chemicals Factory (w:9 r:10 n:18,24)

- ▶ Bought two Population Units (om:20)

Geoff Auctioned a Scientists for 40. Jim joined at 93. Geoff dropped out at 93. Jim got it for 93 reduced to 83 after Data Library discounts (o:1,5 w:5,7,7 t:10,11,11,12 m:14)

- ▶ Auctioned an Orbital Lab for 50 and got it (o:1 w:10,30 t:9)

Marcus Passed

Mark Auctioned a Planetary Cruiser for 160 and got it (o:4 w:6,8 t:9,10,10 r:11 m:16,18 n:18,24,26)

Willem Auctioned a Space Station for 120 and got it (w:7,10 r:10,11,12,12,13,14,14,17)

- ▶ Bought one Research Factory (r:15,15)

Michael Bought one Population Unit (t:10)

Jim Passed

PO	Name	Factories	Population	Robots	Production
1	Martin	2o,3w,6t	7 (11)	3 (7)	1o,3w,2t,1T,1m,1mo (155,20)
2	Mark	2o,6w,3t,1r,2n	13 (14)	0 (0)	2w,2W,2t,1r,1m,2n,1ro (204,15)
3	Willem	2o,2w,6r	5 (6)	2 (10)	3o,8r,1om (143,10)
4	Lyndon	2o,5w,4n	10 (10)	0 (0)	2w,1W,1r,1n,1N,1om,2ro (275,15)
5	Geoff	2o,5w,6t	13 (18)	0 (0)	3o,2w,1W,3t,2T,3m (222,25)
6	Marcus	2o,4w,3r	8 (9)	0 (0)	2W,9r,2mo (277,10)
7	Jim	2o,3w,4t	8 (8)	1 (8)	2o,3w,4t,1r,1m (97,15)
8	Michael	2o,4w,1t,4r	6 (10)	5 (6)	3o,8w,1t,9r (192,20)

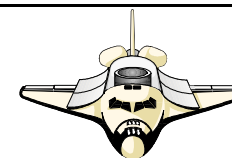
PO	Name	Colony Cards	Victory Points
1	Martin	WH, HE, OL, Rob, Eco, Eco, Eco, OP, MB	63 (545)
2	Mark	HE, Nod, OL, Lab, OP, PC	51 (445)
3	Willem	DL, DL, DL, Sci, Sci, Rob, Rob, Lab, Lab, SS	46 (520)
4	Lyndon	WH, Nod, Sci, SS, PC	46 (370)
5	Geoff	WH, HE, Nod, OL, OL, Eco, OP, OP	44 (410)
6	Marcus	HE, Nod, Sci, Lab, MB	40 (375)
7	Jim	DL, WH, HE, Nod, Sci, OL, Rob, Eco	31 (265)
8	Michael	WH, Rob, Lab, OP	30 (255)

The next round sees the four remaining Moon Bases on offer, and the average of the production cards you hold suggest that the same number of people will be able to afford them. Whether the averages reflect what those people hold is another matter, of course.

Data Library	0	Sold out	Laboratory	0	Sold out
Warehouse	0	Sold out	Ecoplants	0	Sold out
Heavy Equipment	0	Sold out	Outpost	0	Sold out
Nodule	0	Sold out	Space Station	1	(3 more)
Scientists	0	Sold out	Planetary Cruiser	3	(1 more)
Orbital Lab	0	Sold out	Moon Base	4	(none left)
Robots	0	Sold out			

Orders required

Round sixteen auctions, bids and purchases



OUTPOST 25

The Nodule was the
only contested colony card.

ROUND 6

Commander Actions

Jim Bought one Titanium Factory (o:1 w:4,8,8,9)

Marcus Auctioned a Warehouse for 25 and got it (o:4 w:5,8,8)

Willem Bought one Water Factory (o:4 w:7,9)

Sharon Auctioned a Heavy Equipment for 30 and got it for 30 (w:30)

David Auctioned a Nodule for 35. Kevin joined at 36. David dropped out at 36. Kevin got it for 36 (o:2,2,3 w:6,6,7,10)

- ▶ Bought one Titanium Factory (w:30)

Kevin Passed

PO	Name	Factories	Operators	Colony Cards	Production	VPs
1	Jim	2o,3w,1t	5p (8,0)	HE, Nod	2o,3w,1t (37,10)	9 (55)
2	Marcus	2o,4w	6p (8,0)	WH, Nod	3o,2w,1W (53,15)	9 (50)
3	Sharon	2o,4w	5p (8,0)	HE, Nod	2o,5w (41,10)	8 (55)
4	Kevin	2o,3w	5p (8,0)	DL, Nod	3o,3w (30,10)	8 (40)
5	Willem	2o,3w	4p (5,0)	DL, DL, DL	3o,3w (30,10)	7 (45)
6	David	2o,4w,1t	5p (5,0)	HE	2o,1w,1W,1t (53,10)	7 (30)

Data Library	0	Sold out	Heavy Equipment	1	(none left)
Warehouse	3	(none left)	Nodule	0	Sold out

Orders required

Round seven auctions, bids and purchases



PUERTO RICO 4

Lots of goods are on the quayside.

ROUND 13

Geoff is the Builder (+1) and builds an Indigo Plant.

Jim builds a Large Market, Stephen builds an Indo Plant, Kevin builds a Hacienda.

Jim is the Trader and trades Tobacco.

Kevin trades Coffee.

Stephen is the Craftsman (+1) and produces an extra Tobacco.

Kevin is the Settler and plants Corn.

Geoff plants Tobacco, Stephen plants Indigo.

Roles	Builder	+1 Captain	Craftsman	+1 Mayor
	Settler	Trader	+2 Prospector	

Quarries	Plantations (Fields)	Trading House	Ship	Supply
1	Ind Sug Sug Sug Cof	Tob Cof - -	12	17

Cargo Ships

5: Sugar	6: Empty	7: Empty
✓ ✓ ✓ ✓ -	- - - - - -	- - - - - -

Geoff Hardingham DbIns: 12 Chips: 7	<div>Small indigo plant</div> <div>Small sugar mill</div> <div>Indigo plant</div> <div>Tobacco storage</div> <div>Coffee roaster</div> <div>Factory</div> <div>Guild hall</div> <div>City hall</div>
---	--

Jim Reader DbIns: 5 Chips: 9	<div>Indigo plant</div> <div>Tobacco storage</div> <div>Small market</div> <div>Hacienda</div> <div>Large market</div> <div>Fortress</div>
------------------------------------	--

Stephen Webb DbIns: 4 Chips: 16	<div>Small indigo plant</div> <div>Indigo plant</div> <div>Sugar mill</div> <div>Tobacco storage</div> <div>Small warehouse</div> <div>Factory</div> <div>Wharf</div>
---------------------------------------	---

Kevin Lee DbIns: 11 Chips: 9	<div>Small sugar mill</div> <div>Coffee roaster</div> <div>Small market</div> <div>Hacienda</div> <div>Large market</div> <div>Residence</div> <div>Customs house</div>
------------------------------------	---

We're not done yet, and don't look likely to finish next time either.

Orders required

Round fourteen orders in the sequence Jim, Stephen, Kevin, Geoff



PUERTO RICO 5

Production improves and is then used.

ROUND 8

Allan is the Builder (+2) and builds a Small Indigo Plant.

Jim builds a Small Indigo Plant, Brian and Paul build Tobacco Storage.

Jim is the Settler (+1) and digs a Quarry (manned).

Brian plants Corn, Paul plants Indigo, Allan plants Coffee.

Brian is the Mayor (+1).

Paul is the Craftsman and produces an extra Tobacco.

Roles	Builder	+1 Captain	Craftsman	Mayor
	Settler	+1 Trader	+1 Prospector	

Quarries	Plantations (Fields)	Trading House	Ship	Supply
4	Crn Ind Sug Sug Cof	Crn Cof Sug -	10	37

Buildings

1 VP	SIP	1	SSM	2	SMA	×	HAC	2	CON	2	SWA	1
2 VPs	LIP	2	LSM	3	HOS	1	OFF	2	LMA	2	LWA	2
3 VPs	TOB	×	COF	2	FAC	2	UNI	2	HAR	2	WHA	2
4 VPs	GUI	1	RES	1	FOR	1	CUS	1	CIT	1		

Cargo Ships

5: Empty	6: Tobacco	7: Indigo
- - - - -	✓ ✓ - - -	✓ ✓ ✓ - -

Jim Reader DbIns: 3 Chips: 2	<div>Small indigo plant</div> <div>Tobacco storage</div> <div>Hospice</div>
------------------------------------	---

Brian Tappenden DbIns: 4 Chips: 5	<div>Small indigo plant</div> <div>Tobacco storage</div> <div>Coffee roaster</div> <div>Small market</div>
---	--

Paul Tappenden DbIns: 1 Chips: 9	<div>Small sugar mill</div> <div>Indigo plant</div> <div>Tobacco storage</div> <div>Small market</div>
--	--

Allan Stagg DbIns: 6 Chips: 10	<div>Small indigo plant</div> <div>Small sugar mill</div> <div>Small warehouse</div>
--------------------------------------	--

Orders required

Round nine orders in the sequence Jim, Brian, Paul, Allan



PUERTO RICO 6

A pretty quiet round.

ROUND 4

Lionel is the Builder (+1) and builds a Tobacco Storage.
Rob is the Captain (+1).
Jim is the Mayor.
Tony is the Trader (+1).

Roles	Builder	Captain	+1 Craftsman	Mayor
	+1 Settler	Trader	+1 Prospector	

Quarries	Plantations (Fields)					Trading House				Ship	Supply
7	Crn	Ind	Sug	Sug	Tob	Crn	-	-	-	7	55

Buildings	1 VP	SIP	3	SSM	4	SMA	✗	HAC	2	CON	1	SWA	2
	2 VPs	LIP	2	LSM	2	HOS	1	OFF	2	LMA	2	LWA	2
	3 VPs	TOB	2	COF	3	FAC	2	UNI	2	HAR	2	WHA	2
	4 VPs	GUI	1	RES	1	FOR	1	CUS	1	CIT	1		

Cargo Ships	5: Corn	6: Indigo	7: Sugar
	✓✓✓✓-	✓✓--	✓-----

Rob	Indigo plant	Construction hut	
Thomasson	Fields: Ind✓Cof✗		Goods: ✗
Dblns: 2			
Chips: 3			
Jim	Small indigo plant	Hospice	
Reader	Fields: Qry✓Ind✓Tob✓		Goods: ✗
Dblns: 1			One man is in San Juan
Chips: 0			
Tony	Sugar mill	Small market	
Sait	Fields: Crn✓Sug✓✓		Goods: ✗
Dblns: 3			
Chips: 2			
Lionel	Tobacco storage	Small market	
Robbins	Fields: Crn✓Tob✓✓		Goods: ✗
Dblns: 1			
Chips: 4			

All the goods went overseas, so you'll need to be producing more at some point.

Orders required
Round five orders in the sequence Rob, Jim, Tony, Lionel

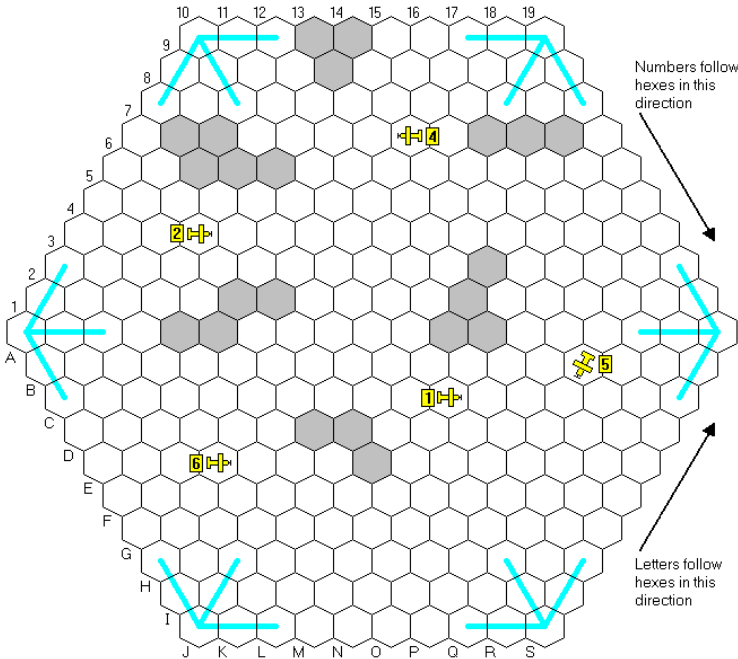


SOPWITH T-340-FW

Our first man is down.

ROUND 5

Pilot	Starts	Moves	Ends	A:D:P
1 <i>Not Only But Also</i> Don Shailer	J10-E	RS, A, RS {Airfield: A1}	M11-E	15:11:00
2 <i>Mad Ferret</i> Tim Franklin	B4-NW	RT, RT, A-fA {Airfield: A10}	D7-E	12:11:00
3 <i>Roland Slide</i> Simon Brooks	G12-SW	RS, RS, RS {Airfield: J19}	Crashed in cloud	13:00:4
4 <i>The Brown Baron</i> Michael Graystone	K14-W	RS-fLA, RS, RS {Airfield: S19}	H14-W	08:09:09
5 <i>Wizard Prang</i> Jim Reader	N15-E	A, RT, RT {Airfield: S10}	P15-SW	12:11:03
6 <i>Lord Flashheart</i> Joakim Spångberg	E3-SE	A, A, LT {Airfield: J1}	H4-E	12:12:00



The clouds moved west. Sorry for not printing the updated map last time, but it was mailed out to everyone, so should not have caused a problem.



RAIL BARON 14

Lots of payments and some reversed fortunes.

ROUND 10

Kevin Lee : Green : Pocatello Expressways Are Rampant (PEAR) : Cash 34K
(Home: El Paso)

- 46: {5} C&O to 1 E of Detroit {-1 bank}
- 47: {10} C&O/NYC/B&M to Boston {+14} {-1 bank -10 PFFFT}
- 48: {7} B&M/NYC to Cleveland {-1 bank -10 PFFFT}
- 49: {4} NYC to Indianapolis {+9½} {-10 PFFFT}
- 50: {11} PA/MP to 2 E of Dallas {-10 C&T}

Jim Reader : Yellow : Bloody Useless Management (BUM) : Cash 39½K
(Home: Detroit)

- 46: {5} T&P to 2 SE of Shreveport {-10 C&T}
- 47: {10} T&P to New Orleans {+5} {-10 C&T +10 PFFFT}
- 48: {7} L&N/GM&O to 3 SE of St.Louis {-1 bank -10 PFFFT}
- 49: {4} GM&O/PA to 1 E of St.Louis {-1 bank -10 C&T}
- 50: {10/1} PA to Pittsburgh {+11½} Bonus: PA to 1 W of Pittsburgh {-10 C&T}

John Shelley : Red : St.Louis, Atlanta, Plains & Pacific Electric Railroad System
(SLAPPERS) : Cash 26½K (Home: Atlanta)

- 46: {5} B&O to 1 NW of Pittsburgh {-1 bank}
- 47: {10} B&O/PA to New York {+31½} Buys Express {-4} {-1 bank -10 C&T}
- 48: {4} PA/B&O to 4 E of Cincinnati {-1 bank -10 C&T}
- 49: {4} B&O to Cincinnati {-1 bank}
- 50: {11} B&O/SLSF to Oklahoma City {+16} {-1 bank -10 PFFFT}

Roger Krueger : Blue : PFFFT (Pennies Flattened for Feckless Teens : Cash 90½K
(Home: San Francisco)

- 46: {7} UP to 2 NE of Los Angeles {-1 bank}
- 47: {15} AT&SF to San Diego {+27} Bonus: AT&SF/UP to 1 SW of Las Vegas {-1 bank -10 BUM +10 PEAR}
- 48: {7} UP to 1 N of Salt Lake City {-1 bank +10 PEAR +10 BUM}
- 49: {8} UP to 4 W of Omaha {-1 bank +10 PEAR +10 C&T}
- 50: {11} UP/CRI&P/NYC to 1 E of Chicago {-1 bank +10 SLAPPERS +10 C&T}

Derek Wilson : Black : Cut & Thrust (C&T) : Cash 7K
(Home: Los Angeles)

- 46: {5/2} PA to Pittsburgh {+8} Bonus: PA to Columbus {-1 bank +10 BUM}
- 47: {10/5} PA/MP to Kansas City {+9} Bonus: MP to 3 E of Pueblo {-1 bank +10 BUM +10 SLAPPERS}
- 48: {7} MP/D&RGW to 4 SE of Salt Lake City {-1 bank +10 SLAPPERS}
- 49: {8} D&RGW/UP to 1 NE of Las Vegas {-1 bank -10 PFFFT +10 BUM}
- 50: {10/1} UP to Los Angeles {+17½} Bonus: UP to 1 E of Los Angeles {-10 PFFFT +10 PEAR +10 C&T}

With two players forgetting to count their Express bonuses in their moves, and two forgetting that you can use bonus movement to move away from a city if it wasn't used getting there, some plans were a little different from the final results. I doubt that anyone ended up paying more than they would have done, but it will explain why the moves don't match your plans.

Turn	Basic Throw	Bonus	Priority	
------	-------------	-------	----------	--

51	6+6=12	6 (All)	PEAR	With two double-six rolls this time, there are bonus for everyone on turns 51 and 53. The other three are for Superchiefs only.
52	2+4=6	2 (S)	BUM	
53	6+6=12	1 (All)	SLAPPERS	
54	3+5=8	1 (S)	PFFFT	
55	1+2=3	3 (S)	C&T	

Player	Colour	First Destination	Payout	Second Destination	Payout
PEAR	Green	San Francisco . (SW)	24,500	Denver (PL)	13,500
BUM	Yellow	Norfolk (SE)	5,000	Buffalo (NE)	6,500
SLAPPERS	Red	Washington . . (NE)	14,000	Butte (NW)	22,500
PFFFT	Blue	Portland (NE)	33,500	Milwaukee . . . (NC)	12,000
C&T	Black	Los Angeles .. (SW)	26,000	Detroit (NC)	25,000

Additional destinations for <i>BUM</i>	Buffalo to:	Milwaukee . . . (NC)	6,000
	Milwaukee to:	Memphis (SC)	6,000
Additional destinations for <i>PFFFT</i>	Milwaukee to:	Mobile (SE)	9,000
	Mobile to:	Baltimore (NE)	10,500

Player	Train	Railroads	Cash
PEAR	E	B&M, C&NW, C&O, SP	\$13,500
BUM	E	AT&SF, GM&O, GN, RF&P, SAL	\$14,000
SLAPPERS	E	ACL, B&O, CB&Q, IC, NP, SOU	\$35,000
PFFFT	S	CRI&P, L&N, N&W, NYC, NYNH&H, SLSF, UP, WP	\$172,500
C&T	S	CMStP&P, D&RGW, MP, PA, T&P	\$87,500

C&T was the poor relation last time and is now the second richest player, with the two poorest looking for rescue plans and having a hard time finding them.

PFFFT now has over \$150,000 - in case you hadn't noticed.

Orders required
Turns 51 to 55





RAILROAD TYCOON 1

Tell me if you're planning on completing a major line.

ROUND 7

First player auction

Simon wins the auction

Bids:

SR

ML

JS

MS

.....
1

■■■■■

—

.....KJ

.....

4

Round 7.1

Simon Built from Toledo to Cleveland (cost 6,000)

Simon	Built from Toledo to Cleveland {cost 9,000}
Michael	Built from Atlanta to Savannah {cost 8,000}

Joakim Built from Birmingham to Montgomery (cost 2,000)

Mark	Upgraded to a '5' engine {cost 20,000 - issued 2 shares}
------	--

Round 7.2

Simon	Built from Pittsburgh to Cleveland (cost 6,000 - 6 VPs for completing major line Baltimore to Toledo)
-------	---

Michael Built from Charleston to Savannah (cost 5,000 - 8 VPs for completing major line Atlanta to Richmond)

Joakim Built from Montgomery to Mobile (cost 9,000)

Mark	Delivered blue from Columbus to Atlanta {5 VPs}
------	---

Round 7.3

Simon Delivered purple from Baltimore to New Haven (3 VPs)

Michael Delivered blue from Richmond to Atlanta (5 VPs)

Joakim	Delivered grey from Birmingham to Mobile {2 VPs plus 4 VP service bounty for Mobile}
--------	--

Mark Delivered blue from Chattanooga to Pittsburgh {5 VPs}

Cash flow	Joakim		Mark		Simon		Michael	
Balance b/f		19		13		16		14
Shares	7	19	9	23	2	16	8	14
Expenditure	-2	17	-20	3	-16	0	-8	6
Income	+21	38	+21	24	+21	21	+25	31
Share dividends	-7	31	-11	13	-2	19	-8	23
Shares issued	-	31	-	13	-	19	-	23
Balance c/f		31		13		19		23

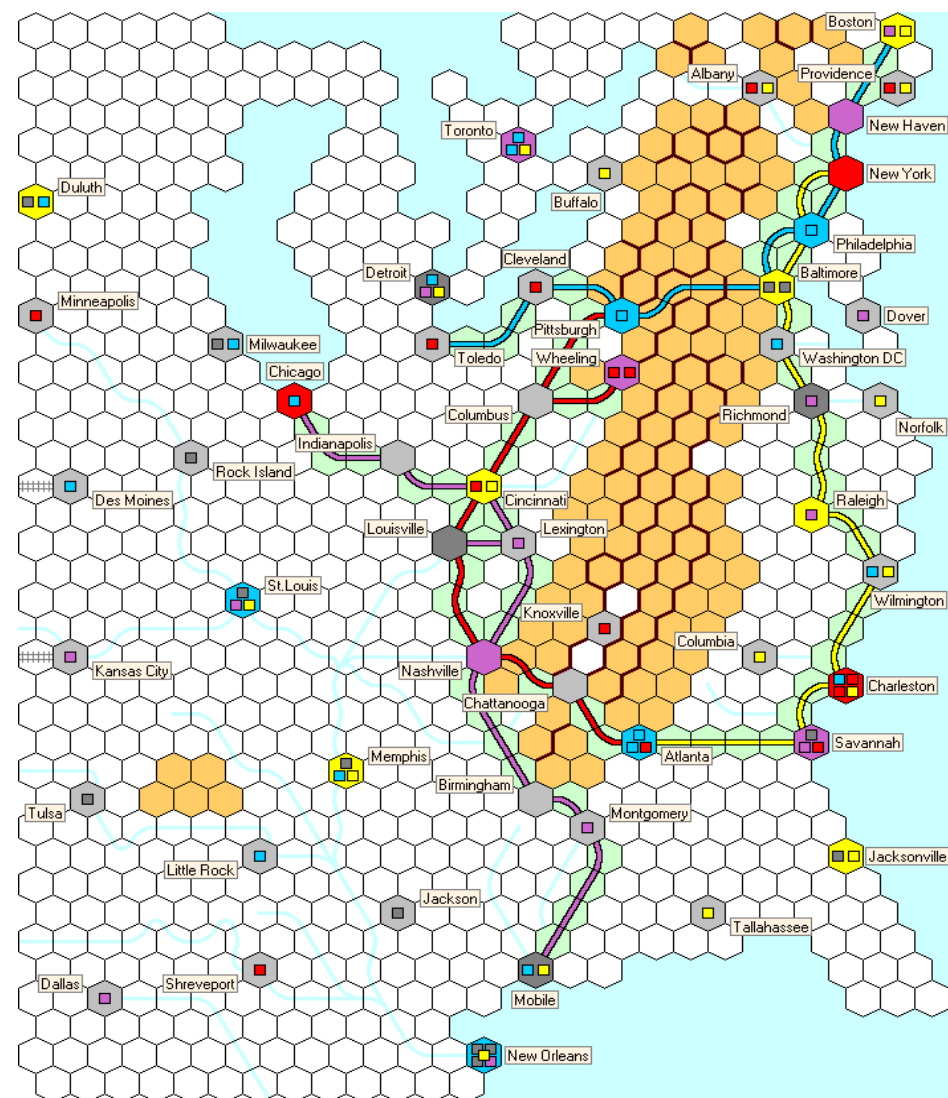
Player	Colour	Train	VPs	Railroad Operation Cards
Joakim	Purple	4	28	-
Mark	Red	5	29	-
Simon	Blue	3	29	Hotel (Boston)
Michael	Yellow	5	44	Hotel (New York)

- | | |
|--------------------------------------|--------------------------------------|
| ✖ City Growth (2 new cubes) | ✖ New Industry (urbanise) |
| ● Major Line (New York/Chicago) (10) | 📄 Government Land Grant (free build) |
| ✖ City Growth (2 new cubes) | 📄 Government Land Grant (free build) |
| ● Service Bounty (Jacksonville) (4) | ✖ New Industry (urbanise) New |

Birmingham, Chattanooga and Columbus are emptied, bringing us up to 8 empty cities.

There are 8 empty cities.

The game end is triggered with 14 empty cities.



Orders required

Bids for first player, followed by three sets of actions



RAILWAY RIVALS 2028-DC

A full route isn't always the best.

GAME OVER

1st	Michael Graystone	GREAT	464
2nd	Tim Franklin	FERRET	434
3rd	Peter Robbins	WCRC	329

Tim Franklin (FERRET, 2nd): Closer than I expected for a first game. Congratulations to Michael, and thanks to both you and Peter for a good game - and of course to Keith for running it.

I think the main place where I lost out here was assuming that because I was the only person with a full route, I was a sure winner for the points - when in fact someone else had a much shorter route, but with a small amount of payment to me at one end or the other.

It's too easy to lose the plot in a postal game. You start off with a plan, but if you won't write it down you forget what you were going to do when the next month comes around, and keep reinventing the plot!



RAILWAY RIVALS 2029-DC

Expectations are met.

ROUND 12

Devon and Cornwall

Round 12 Runs		ODE		YOKEL		GITCO	
31	64 Bude 16 Newquay	① YOKEL 30					30
32	41 Torquay 56 Dulverton	① ODE 30 ✕ GITCO	+5		-5		25 5
33	13 Redruth 33 Plymouth	① GITCO 20 ② YOKEL 10 ✕ ODE	-2 -2	+3 +2	-3 +2		21 5 4
34	32 Plymouth 21 Padstow	① ODE 20 ② GITCO 10 ✕ YOKEL	-2	-1	+2 +1		22 7 1
35	46 Exeter 66 Bideford	① GITCO 16 ② YOKEL 9 ③ ODE 5	-2 -2		+2		14 7 9
36	26 Looe 55 Tiverton	① GITCO 15 ① ODE 15					15 15

Scores							
Runs:		31	32	33	34	35	36
GITCO	436	-	5	21	7	14	15
ODE	338	-	25	4	22	9	15
YOKEL	290	30	-	5	1	7	-

Nobody said they thought the order would change, quite the opposite in fact. Congratulations to Tony on his win.

1st	Tony Sait	GITCO	498
2nd	John Marsden	ODE	413
3rd	Jim Reader	YOKEL	333

Next month we'll round it up and put it to bed, so if you have anything to say, now is the time to let me know.



RAILWAY RIVALS 2030-DC

The leader is being chased hard.

ROUND 10

Devon and Cornwall

Round 10 Runs		THUD		REAL ALE		TGV	
19	53 Taunton 23 Bodmin	① THUD 13 ① TGV 12 ③ REAL ALE 5					13 12 5
20	55 Tiverton 34 Tavistock	① REAL ALE 13 ① TGV 12 ③ THUD 5	+5		-5		18 12 0
21	41 Torquay 31 Liskeard	① REAL ALE 30					30
22	64 Bude 22 Wadebridge	① THUD 30					30
23	61 Ilfracombe 13 Redruth	① THUD 15 ① TGV 15	+1/-3			+3/-1	17 13
24	16 Newquay 43 Exmouth	① REAL ALE 15 ① TGV 15 ✕ THUD	-2		-3 +2	+3	16 12 2

Round 10 builds

Travel Hotspot Under Development (THUD) (Bob Coull, Black)
None.

Rail Efficiency and Luxury, All-the-way-to Lands End (REAL ALE) (Steve Ham, Brown)
None.

Theophilus' Goods Vehicles (TGV) (Simon Robertson, Blue)
None.

Scores								
Runs:		19	20	21	22	23	24	Builds
TGV	273	12	12	-	-	13	12	-
REAL ALE	247	5	18	30	-	-	16	-
THUD	217	13	0	-	30	17	2	-

Round 11 Runs

25.	33 - 24	Plymouth to St.Austell
26.	52 - 46	Honiton to Exeter
27.	15 - 35	Truro to Okehampton
28.	21 - 42	Padstow to Newton Abbot
29.	51 - 65	Seaton to Launceston
30.	14 - 63	Falmouth to Lynton

Runs	Builds
Enter up to 4	Up to 10 points excluding payments to rivals



RAILWAY RIVALS 2046-DC	An expensive building round for PASTIE.	ROUND 8
-------------------------------	---	----------------

Devon and Cornwall

Round 8 Runs

			TRADE	YOKEL	PASTIE	
2	33 Plymouth 63 Lynton	① PASTIE 15	+7			22
		① TRADE 15			-7	8
3	46 Exeter 52 Honiton	① PASTIE 13	+1	+4		18
		① TRADE 12			-1	11
		③ YOKEL 5			-4	1
8	45 Exeter 16 Newquay	① YOKEL 15	+4			19
		① TRADE 15		-4		11
9	36 Kingsbridge 41 Torquay	① YOKEL 30				30
10	53 Taunton 11 Penzance	① YOKEL 20	+5			25
		② TRADE 10		-5		5
12	65 Launceston 21 Padstow	① TRADE 15		+5/-1	-3	16
		① YOKEL 15	+1/-5		-3	8
		✕ PASTIE	+3	+3		6

Run 7 should have been marked as not yet available. Although both TRADE and YOKEL had lines driving past the town, neither had a line into the town. Both have those lines now.

Round 8 builds

Taunton Rapid Express (TRADE) (Tony Bromley, Orange)
W28 - Okehampton, Lostwithiel - M16 - St.Austell, C71 - Barnstaple.
-10 (builds) +12 (towns) +2 (YOKEL) +6 (PASTIE) = +10

Yellow Original King-sized Engines Limited (YOKEL) (Jim Reader, Yellow)

W26 - W23, W25 - X24, N15 - M16, W28 - Okehampton.
-9 (builds) -2 (TRADE) +11/-2 (PASTIE) = -2

Poor and Shaky Trains in Exeter (PASTIE) (Don Shailer, Green)

S23 - Q22 - P22 - N21 - N18.
-10 (builds) -6 (TRADE) +2/-11 (YOKEL) = -25

Scores

	Runs:	2	3	8	9	10	12	Builds	Score
YOKEL	129	-	1	19	30	25	8	-2	210
TRADE	128	8	11	11	-	5	16	+10	189
PASTIE	74	22	18	-	-	-	6	-25	95

Round 9 Runs

7	56 - 35	Dulverton to Okehampton
11.	24 - 62	St.Austell to Barnstaple
13.	44 - 64	Sidmouth to Bude
14.	54 - 66	Taunton to Bideford
15.	32 - 22	Plymouth to Wadebridge
16.	43 - 51	Exmouth to Seaton
17.	31 - 12	Liskeard to St.Ives
18.	14 - 25	Falmouth to Lostwithiel

Runs	Builds
Enter up to 4	Up to 10 points excluding payments to rivals



RAILWAY RIVALS 2047-DX	Planning permission is not given for estuaries.	ROUND 4
-------------------------------	---	----------------

Dixieland - South East USA {15 points for these builds}

South And Delta (SAD) (Steve Ham, Grey)

F86 - G86, G22 - G10.

42 -1 (REAR) +1/-1 (BUM) -1 (SNIBBOR) +1 (JAZZ) = 41

Richmond Expressways Are Rampant (REAR) (Kevin Lee, Brown)

Jackson - H4 - G5 - Baton Rouge, M18 - N18 - N19 - Atlanta - P20 - P21 - Q22 - Q25.

46 +1 (SAD) -2 (BUM) = 45

Bloody Useless Management (BUM) (Jim Reader, Yellow)

F7 - F4 - Baton Rouge, A82 - Roanoke, A83 - G86 - Washington, A84 - A85.

36 +9 (towns) +1/-1 (SAD) +2 (REAR) -1 (JAZZ) = 46

Seacoast New Ironworks, Bessemer, Birmingham & Ohio Railroad (SNIBBOR)

Huntington - E77 - C78 - C81; H9 - H7 - J6. (Lionel Robbins, Red)

53 +1 (SAD) = 54

Just Another Zany Zone (JAZZ) (Colin Sharpe, Blue)

A85 - A88, Z29 - Z28 - Y28 - Y27 - X26 - X21 - Knoxville.

55 +3 (Knoxville) -1 (SAD) = 57

JAZZ wanted to build 16 points this round, but the overspend resolved itself because part of that build was over an estuary, which is impassable.

Builds
Up to 15 points excluding payments to rivals



RAILWAY RIVALS 2051-EA

A little revision
before we move on.

ROUND 3

WEAR's very last build last time was illegal, as it crossed an estuary. The line cuts short at Tollesbury.

East Anglia (15 points for these builds)
Graystone Railways Entertain Another Territory (GREAT) (Michael Graystone, Brown)
 Z3 - Z8 - Hertford, Z7 - W9 - Bishop Stortford - W14 - X14.
 26 +6 (towns) +1 (ODE) +10 (COLIN) = 43

Woodbridge Expressways Are Rampant (WEAR) (Kevin Lee, Red)
 Thetford - U24 - Downham Market - Kings Lynn, U6 - U5. My extra build: R8 - Maldon - O7.
 28 +12 (towns) +1 (ODE) -3 (TGV) = 38

Opening Directly East (ODE) (John Marsden, Orange)
 C21 - Southwold, O19 - P19 - S18 - S16 - W14.
 41 +3 (towns) -1 (GREAT) -1 (WEAR) -2 (COLIN) = 40

Theophilus' Goods Vehicles (TGV) (Simon Robertson, Blue)
 U6 - Tilbury, C55 - Hatfield - C60 - D60 - Hitchin - Sandy.
 32 +15 (towns) +3 (WEAR) = 50

Cromer Ongar London Inter Network (COLIN) (Colin Sharpe, Black)
 O22 - O23 - Q24 - Swaffham, V17 - V13 - W13 - Bishop Stortford - X9, Peterborough - D75.
 47 +3 (towns) -10 (GREAT) +2 (ODE) = 42

Builds

Up to 14 points excluding payments to rivals



RAILWAY RIVALS 2052-IP

Everyone gets some
town points.

ROUND 1

Israel and Palestine (14 points for these builds)
Transit Across Israel and Palestine to Syria (TRIPS) (Tony Bromley, Red)
 Haifa - Qiryat Tiv'on - V32 - Jenin.
 20 +12 (towns) = 32

Buses Running On Own Kinetic Servomechanism (BROOKS) (Simon Brooks, Orange)
 Jerusalem (west) - Nablus, Jerusalem (west) - Bethlehem - R9.
 20 +12 (towns) = 32

Tours of the Old Testament (TOT) (Bob Coull, Black)
 Tel-Aviv-Jaffa - K20 - Herzliya - L21 - Netanya, K20 - Petah Tiqva.
 20 +12 (towns) = 32

Friendly Arab Trains Around the Holy Land (FATAH) (Jim Reader, Yellow)
 Tel-Aviv-Jaffa - K20 - Herzliya - L21 - Netanya - N27 - N28.
 20 +6 (towns) = 26

Jim, be warned, you're counting the hex numbers the wrong way. All of your references assumed the low numbers were at the top of the map. Comparison of any two numbers in one column will show you the reverse is true. I have presumed your last build was to continue north rather than come south again...

Builds

Up to 14 points excluding payments to rivals



SAINT PETERSBURG 1

One card each
into your hands.

PHASE 2-T

Round 2 - Trading Phase

Mike	Geoff	Sharon	Rob
Takes Chamber Maid into hand	Takes Admiral into hand	Takes St.Isaac's Cathedral into hand	Takes Fur Shop into hand
x	x	x	x



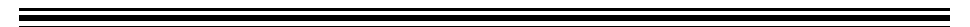
Players	Rubles	VPs	Worker	Building	Aristocrat	Leads Phase	Cards
Geoff	7	4	9r + 0v	0r + 3v	2r + 0v	Trading	28
Sharon	17	0	12r + 0v	0r + 0v	4r + 0v	Building	18
Rob	9	2	12r + 0v	0r + 0v	5r + 2v	Worker	11
Mike	12	3	12r + 1v	0r + 1v	2r + 0v	Aristocrat	22

Players	Cards in hand (Limit)	Cards in play
Geoff	Admiral, Minister of Foreign Affairs, Jester	Lumberjack, Gold Miner x 2, Market x 2, Warehouse, Observatory, Administrator
Sharon	Library, St.Isaac's Cathedral	Lumberjack, Shepherd x 2, Ship Builder, Potjemkin's Village (3/8), Secretary
Rob	Fur Shop, Black Market	Lumberjack, Shepherd, Fur Trapper, Ship Builder, Warehouse Manager, Senator
Mike	Chamber Maid, Black Market	Gold Miner, Ship Builder, Market, Author x 2, Wharf

Discard pile: **Ship Builder**, **Customs House**, **Hospital**, **Academy**, **Warehouse Manager**

Orders required

Round three Worker phase led by Rob





SCEPTRE OF ZAVANDOR 1

Just one Artifact
sells this time.

ROUND 9

Lyndon only paid 25 for each of his Crystals of Protection, as he gained an additional 5 discount for his Artifacts knowledge.

Actions							
Kevin	Increased knowledge of Sages to level 2 {6} - gains two Emerald cards						
David	Bought two Emeralds {37}						
Geoff	Increased knowledge of Accumulation to level 2 {4}						
	▶ Bought a diamond {32}						
Sharon	Bought an Emerald {24}						
Lyndon	Auctioned a Crystal of Protection for 40. Tim joined at 41 and dropped out at 44.						
	Lyndon got it for 44 {34} {Artifacts and 5th place discount}						
	▶ Increased knowledge of Sages to level 3 {6} - gains two Emerald cards						
Tim	Bought an Emerald {30}						

PO	Name	Character	Gems	Active/Limit	Dust	Energy Cards	Hand Limit
1	David	Witch	o:2{1} s:4 e:2	8/8	7	S:2	6
2	Geoff	Fairy	o:{1} s:3 d:3	6/6	-	s:3 d:4	5
3	Sharon	Kobold	o:2 s:4 e:1	7/8	10	S:1 e:1	8
4	Lyndon	Elf	o:3{1} s:2	5/5	25	s:2 e:6	5
5	Kevin	Mage	s:3 d:2	5/5	-	s:5 e:2 d:4	9
6	Tim	Druid	o:1 e:2	3/7	6	e:2	8

PO	Name	Artifacts	Knowledge	New Knowledge Cost	VPs/Gems
1	David	SB MB	Gems:4 Art: 3 Acc: 2	30/35/40	15/10
2	Geoff	RS EL	Gems:2 Sages:4 Acc:2	30/35/40	14/9
3	Sharon	SB CB MB MM	Gems:2 Acc:2	20/25/30/35	14/8
4	Lyndon	RS CP CP CP	Energy:4 Sages:2 Art:3	30/35/40	14/5
5	Kevin	RS CB EL	Sages:2 Art:4	25/30/35/40	13/7
6	Tim	SB CB MB	Fire:2	20/25/30/35/40	9/5

Artifacts on offer: 2 Magic Mirrors, 1 Elixir, 1 Mask of Charisma, 1 Magic Wand, 1 Chalice of Fire

I was asked if you could bid on something you couldn't strictly afford, such as bidding on the Magic Wand when you don't have 60, but will get a discount when you pay. This seems to be a major area of confusion here and in Outpost. The key is that if you can pay for it when the auction is over, you can bid. You bid the full amount, which makes everyone even during the bidding. When you pay, discounts are applied and you pay what is due, which may well be less than the face value. Bear in mind that you can raise funds by selling/disenchanting gems, so if you bid more than you can pay with your existing dust/cards, I will assume you want to sell/disenchanted sufficient gems to make the payment. Indeed, you will be required to do so.

Orders required
Round ten gem dealing, knowledge improvement, auctions and bids



SCEPTRE OF ZAVANDOR 2

It's magic, magic baby.

NEW GAME

This game should be smoother than the first now that I've tripped over myself a few times in the first game. The players for this one are:

Simon Cutforth	Ty-Gwyn, Town Lane, Woodbury, Exeter, Devon, EX5 1NH
Lyndon Gurr	15b Hedley Street, Maidstone, Kent, ME14 1UG
Kevin Lee	149 Ludlow Road, Woolston, Southampton, SO19 2ER
Michael Longdin	29 Woolborough Road, Crawley, West Sussex, RH10 8HE
Marcus Pratt	7 York Villas, Brighton, BN1 3TS
Roger Trethewey	Sea Pines, Hesketh Road, Torquay, Devon, TQ1 2LN

PO	Name	Character	Gems	Active/Limit	Dust	Energy Cards	Hand Limit
1	Michael	Mage	o:2 s:1	3/5	17	s:1	6
2	Kevin	Witch	o:2 s:1	3/5	15	s:1	4
3	Roger	Druid	o:2 s:1	3/5	25	s:1	5
4	Lyndon	Kobold	o:2 s:1	3/5	25	s:1	6
5	Marcus	Fairy	o:2 s:1	3/5	15	s:3	5
6	Simon	Elf	o:2 s:1	3/5	17	s:1	4

PO	Name	Artifacts	Knowledge	New Knowledge Cost	VPs/Gems
1	Michael	-	Art:1	20/25/30/35/40	3/3
2	Kevin	-	Gems:1	20/25/30/35/40	3/3
3	Roger	-	Fire:1	20/25/30/35/40	3/3
4	Lyndon	-	Acc:1	20/25/30/35/40	3/3
5	Marcus	-	Sages:1	20/25/30/35/40	3/3
6	Simon	-	Energy:1	20/25/30/35/40	3/3

Artifacts on offer: 2 Spellbooks, 1 Runestone, 3 Crystal Balls

Copies of the rules are enclosed for all the players, together with an FAQ I got from the web. Also enclosed is a key to the tables in the report and some notes of my own about how some aspects of the game will be handled, making the whole thing look like a Sunday supplement insert.

One thing I can clear up - Table II on page 5 of the rules lists the victory points, but the right-hand column is out of position. The first four items should be one line higher, i.e. an active Opal or Sapphire gives 1 VP, an active Emerald or Diamond gives 2 while an active Ruby gives 3. Being at the top level in a knowledge field is worth 2 VPs.

Orders required
Round one gem dealing, knowledge improvement, auctions and bids



Heron Games

Here is a selection of games from the shop. It's not everything - visit the web site (www.herongames.com) for the full story.

I aim to keep most prices about 10% below list price, with UK post and packing £6 at the most whatever the size of the order. Let me know if you're interested in anything on the list.

Battlefield Evolution Armies ... £20.00
Battlefield Evolution Tanks ... £13.50

1850 Variant Box No.1 £20.00
1856 £31.50
1860: Isle of Wight £27.00
1861: Russia £36.00
1870 £31.50
6 nimm! £6.00
Antike £32.00
Apples to Apples £18.00
Apples to Apples Exp #1 £9.00
Apples to Apples Exp #2 £9.00
Arkham Horror £31.50
Arkham: Curse of the Pharaoh . £13.50
Arkham: Dunwich Horror £25.00
Ave Caesar £19.00
Axis & Allies: Battle of the Bulge £36.00
BattleLore £45.00
Blue Moon City £25.00
Britannia £22.50
Carcassonne £13.50
(most Carcassonne titles are in stock)
Cave Troll £18.00
Caylus £25.00
Coloretto £5.00
Descent £45.00
Descent: Well of Darkness £25.00
Descent: Altar of Despair £22.50
Europe Engulfed £72.00
Gheos £31.50
Gloria Mundi £29.00
Great War at Sea - Jutland £34.50
Hacienda £25.00
Iliad £13.50
Imperial £34.00
Khet: The Laser Game £31.50
Khronos £27.00
Krumble! £14.50

18Rhl Rheinland Still coming...
Catan Histories: Struggle for Rome £31.50

Lost Cities £13.50
Medici vs Strozzi £13.50
Metromania £18.00
Nottingham £9.00
On the Underground £22.50
Parthenon: Rise of the Aegean . £31.50
Perikles £22.50
Princes of Florence £27.00
Puerto Rico £25.00
Ra £25.00
Railroad Tycoon £36.00
Ramparts £25.00
Really Nasty Motor Racing Game £13.50
Runebound: Sands of Al-Kalim . £22.50
Saint Petersburg £20.50
San Juan £13.50
Sceptre of Zavandor £27.00
Section X £18.00
Settlers of Catan £22.50
(most Settlers/Catan titles are in stock)
Shear Panic £18.00
Silk Road £31.50
Skyline of the World £18.00
Space Blast £15.50
Space Dealer £18.00
Sticheln £6.00
Take it Easy! £18.00
Take it to the Limit! £22.50
Tara, Seat of Kings £22.50
Tempus £25.00
Thurn and Taxis £20.50
Ticket to Ride £27.00
To Court the King £18.00
Twilight Struggle £36.00
Warrior Knights £31.50
World Cup Game £31.50

If you're looking for something else, do ask, I may be able to get hold of it for you. ✱

NEWS FROM THE ROCK

<http://www.fwtwr.com/>



This is the section that provides news of the Internet sibling of this zine.

✱ I've come to the conclusion that one reason my plans for new games don't happen as soon as I would like is that I set my targets too high. I don't need adjudicators that catch every illegal move, just ones that keep track of the games and generate the reports...

✱ Here are the current web ratings for active players with a rating of 2.0 or more:

- Lew Stansby 3.817
- Michael Bakken 3.000
- Rob Thomasson 2.955
- Victor Cronshaw 2.903
- Roger Krueger 2.882
- Eric Freeman 2.704
- Per Hallberg 2.636
- Peter Hawkins 2.586
- David Hilbert 2.429
- Nic Chilton 2.318
- Willem Moene 2.267
- Gareth Lodge 2.185
- Michael Longdin 2.136
- Peter Beck 2.069
- Bob Coull 2.000
- Mick Haytack 2.000

✱ Completed games and winners:

Saint Petersburg e670 Mick Haytack
Puerto Rico e97 David Hilbert
1825 e701 {Unit 3} {1825-H22} Michael Bakken
Euphrat & Tigris e703 Paul Ridout
Puerto Rico e706 Lew Stansby
1800 e710 {1800-N22} Peter Hawkins
Carcassonne e711 Nic Chilton
Acquire e712 Willem Moene

✱ New games and start dates:

Ingenious e723 Feb 6th
Puerto Rico e724 Feb 7th
Saint Petersburg e725 Feb 8th
1870e726 {1870-A23} Feb 22nd
Acquire e727 Feb 22nd
Ra e728 Feb 23rd

PREVIEW

The lack of many 18xx games from the waiting list is not meant to suggest that I don't want to run any more, it's just that I have no strong preference for which ones to offer next. Four 18xx games have finished this month, with another certain to end next month, so there is definitely room for more.

1870 should probably be one of the next, as I'll be down to a single game after 1870-U19 finishes next time. I'm also happy to extend the range on offer, and there plenty to choose from. Some of the American state games (Alabama, Florida, Georgia, Virginia) seem to be obvious candidates. The first three are for three players each, while Virginia takes three or four.



Here's the plan for new games due to start in the next few issues.

#141: 1861, Acquire (Standard), Railway Rivals (South Scotland)
 #142: 18EU, Golden Strider, Railway Rivals (Central Scotland)



ZINES RECEIVED

A summary of zines that I've received recently.

Date	Zine/Issue
Feb 6th	Save Your Xxs For Me 37
Feb 9th	Ode 282
Feb 15th	The Tangerine Terror 36
Feb 20th	...mias n'est-ce pas la gare? 67
Feb 23rd	Bloodstock 197

Mick Haytack has said that he will be folding Bloodstock later this year, probably around issue 202 or 203. Another one bites the dust, but in the style that has become common, a planned bite of the dust rather than a sudden and unexpected event.



RATINGS

This is the list of subscribers with a rating of 2.0 or greater. People are only included if they have completed five games.

▼	David Smith	3.500
▲	Mark Frueh	3.200
▲	Lyndon Gurr	3.111
-	Simon Robertson	3.073
▼	Lionel Robbins	3.000
▲	Marcus Pratt	2.762
-	Steve Thomas	2.563
-	Colin Sharpe	2.271
▼	Stephen Webb	2.242
-	Michael Graystone	2.169
-	Rob Thomasson	2.141
-	John Colledge	2.000

WHO PLAYS WHAT

Peter Berlin	1829-C20, 1829-V21, 1856-Y19	Willem Moene	1800-I20, 1830-G20, 1830-R20, 1830-F21, 1835-B21, 1856-M19, 1856-D22, 1856-M22, 1870-O20, 18Kaas-O19, Acq46, Acq47, OP24
Tony Bromley	RR-2046-DC, RR-2052-IP	Marcus Pratt	NER8, OP24
Simon Brooks	Acq47, BA16, BB-297-VSW, BB-300-KYR, RR-2052-IP, Sop340	Jim Reader	6n12, BA16, BB-297-VSW, BB-300-KYR, OP24, PR4, PR5, PR6, RB14, RR-2029-DC, RR-2046-DC, RR-2047-DX, RR-2052-IP, Sop340
Martin Butcher	1829-C20, 1830-G20, 1856-Y19, 1870-U19, 1895-L20, 18Kaas-O19, LR10, NER8, OP24	Lionel Robbins	1829-J19, 1829-V21, PR6, RR-2047-DX
John Colledge	6n12, Acq47	Peter Robbins	RR-2028-DC
Bob Coull	Acq46, BB-297-VSW, BB-300-KYR, RR-2030-DC, RR-2052-IP	Tony Robbins	1837-G21, 1856-D22
Simon Cutforth	1856-M19, 1870-O20	Simon Robertson	BB-297-VSW, BB-300-KYR, RRT1, RR-2030-DC, RR-2051-EA
Tim Franklin	1826-E22, 1850-R22, 1895-L20, 6n12, BA16, RR-2028-DC, Sceptre 1, Sop340	Tony Sait	1830-F21, 1835-B21, 1856-M19, 1856-M22, 18Kaas-O19, PR6, RR-2029-DC
Mark Frueh	1830-R20	Don Shailer	1829-C20, RR-2046-DC, Sop340
Michael Graystone	6n12, Acq47, BB-299-NWA, BB-300-KYR, RR-2028-DC, RR-2051-EA, Sop340	Colin Sharpe	6n12, Acq47, BB-299-NWA, RR-2047-DX, RR-2051-EA
Lyndon Gurr	1826-E22, 1829-J19, 1850-R22, 1856-M19, 1856-M22, 1870-U19, 1899-Z21, 18Kaas-O19, Acq46, LR10, OP22, Sceptre 1	John Shelley	1826-E22, 1829-J19, 1835-B21, 1856-D22, 1870-U19, 1899-Z21, RB14
Steve Ham	6n12, BA16, BB-299-NWA, RR-2030-DC, RR-2047-DX	David Smith	1829-J19, 1829-C20, Sceptre 1
Geoff Hardingham	1837-G21, OP24, PR4, StP1, Sceptre 1	Don Smith	1826-E22, 1830-G20, 1830-R20, 1830-F21, 1835-B21, 1837-G21, 1870-O20, 1899-Z21
Alan Harvey	1800-I20, 1825-L21, 1829-J19, 1850-R22, 1899-Z21, 18Kaas-O19	Joakim Spångberg	RRT1, Sop340
Mick Haytack	6n12	Allan Stagg	PR5
Mike Head	1830-F21, 1856-Y19, 1856-D22, 1856-M22	Mark Stretch	1830-F21, 1835-B21, OP24, RRT1
John Hopkins	1829-V21	Brian Tappenden	PR5
Mike Hutton	1825-L21, 1829-V21, 1830-R20, 1870-U19, StP1	Paul Tappenden	PR5
Sharon Khan	6n12, BA16, NER8, StP1, Sceptre 1	Rob Thomasson	1829-V21, 1856-Y19, 1856-M22, PR6, StP1
Roger Krueger	1830-G20, 1870-O20, 1895-L20, LR10, RB14	Stephen Webb	1826-E22, 1830-G20, 1837-G21, 1850-R22, 1856-M19, 1856-Y19, 1870-U19, 1870-O20, PR4
Kevin Lee	BA16, BB-297-VSW, BB-299-NWA, PR4, RB14, RR-2047-DX, RR-2051-EA, Sceptre 1	Tony Wilcock	Acq46, LR10, NER8
Michael Longdin	OP24, RRT1	Derek Wilson	RB14
Richard Lunn	1830-R20, 1856-D22		
John Marsden	Acq46, BB-299-NWA, RR-2029-DC, RR-1051-EA		



OUTSIDE EDGE

FOR WHOM THE DIE ROLLS is brought to you by:

Keith Thomasson, 14 Stepnells, Marsworth, Near Tring, Herts, HP23 4NQ

CONTENTS

◇ Games ◇	1870-U19	40	RR-2028-DC	72
*****	1870-O20	42	RR-2029-DC	72
◇ New ◇	1895-L20	44	RR-2030-DC	73
Age of Steam 1	1899-Z21	46	RR-2046-DC	74
Bus Boss 301-CRO	18Kaas-O19	48	RR-2047-DX	75
Sceptre of Zavandor 2	6 nimmt! 12	50	RR-2051-EA	76
*****	Acquire 46	51	RR-2052-IP	76
1800-I20	Acquire 47	52	Saint Petersburg 1	77
1825-L21 {Unit 3}	Acquire 48 {Powers}	53	Sceptre of Zavandor 1	78
1826 E22	Breaking Away 16	56	Sopwith T340FW	67
1829-J19 {North}	Breaking Away 17	57	*****	
1829-C20 {South}	Bus Boss 297-VSW	58	◇ Bits and Bobs ◇	
1829-V21 {North}	Bus Boss 299-NWA	59	Board2Pieces	3-6
1830-G20	Bus Boss 300-KYR	60	Deadlines	Below
1830-R20	Lancashire Railways 10	29	Heron Games	80
1830-F21	New England Railways 8	61	News from the Rock	81
1835-B21	Outpost 24	62	Preview	82
1837-Q21	Outpost 25	63	Ratings	82
1850-R22	Puerto Rico 4	64	UK Games Expo	29
1856-M19	Puerto Rico 5	65	Waiting Lists	2
1856-Y19	Puerto Rico 6	66	Who Plays What	83
1856-D22	Rail Baron 14	68	Zines Received	82
1856-M22	Railroad Tycoon 1	70		

DEADLINES

Wednesday March 21st 2007

18xx Games - Friday March 16th

Future main deadlines: April 17th May 16th June 13th

E-mail orders must be sent as plain text messages. Do not send as e-mail attachments.
Unreadable submissions will be treated as No Move Received.