

FOR WHOM THE DIE ROLLS

January 2007

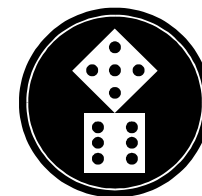
Published by Keith Thomasson

Issue 139

This page has been added to the PDF copy so that reports that appear on facing pages in the paper copy are shown side-by-side.



£2.00



INSIDE STORY

This is FOR WHOM THE DIE ROLLS #139, a game playing magazine for game players, published by Keith Thomasson, 14 Stepnells, Marsworth, Near Tring, Herts, HP23 4NQ. This issue costs £2.00 (including postage).

E-mail: Keith@Thomasson.com

Web site: www.fwtwr.com

Subscription payments can be sent via PayPal to Keith@Thomasson.com

Please specify the currency for international payments as GBP

Farewell to Gareth Lodge and Peter Mearns.

WAIT

① means that number of players needed. ⇨③ means up to that number needed. ⇨ means there is no limit. ✱ means a list is full.

Games starting in this issue...

1850 Tim Franklin, Lyndon Gurr, Alan Harvey, Stephen Webb
Breaking Away Kevin Lee, Richard Lunn, Jim Reader, Joakim Spångberg, Allan Stagg, Roger Trethewey

Games starting in the next issue...

✱ Age of Steam Sharon Khan (original map/first expansion), Michael Longdin, Mike Hutton, Marcus Pratt
✱ Bus Boss Jim Reader, Rob Thomasson, Roger Trethewey, Mike Hutton, Joakim Spångberg (Croydon)
✱ Sceptre of Zavador .. Michael Longdin, Lyndon Gurr, Simon Cutforth, Kevin Lee, Roger Trethewey, Marcus Pratt

You should own these games or be familiar with their rules...

✱ 1861 Mark Stretch, Geoff Hardingham, Lyndon Gurr, Mike Hutton, Willem Moene (The first stock round will be run by e-mail)
② 1895 Steve Thomas
⇨① 18EU Stephen Webb, Don Smith, Peter Berlin, Mark Frueh (The minor company auctions will be run by e-mail for this game)
⇨④ 6 nimmt! Colin Sharpe, Jim Reader, Tony Wilcock, Michael Graystone
⇨① Acquire (Standard) ... Tony Wilcock, Kevin Lee, Colin Sharpe, Lyndon Gurr
⇨① Industrial Waste Sharon Khan, Mike Head, Marcus Pratt
⇨⑦ Outpost Willem Moene, Lyndon Gurr, Marcus Pratt

I supply everything you need for these...

②/⑧ Battle! Michael Graystone, Allan Stagg, Steve Ham, Marcus Pratt
⇨④ Golden Strider Steve Ham, Jim Reader, Roger Trethewey, Kevin Lee, Simon Brooks, Joakim Spångberg
✱ Railway Rivals Tony Sait, Jim Reader, John Marsden, Steve Ham, Simon Robertson (South Scotland)
⇨③ Railway Rivals Michael Graystone (Central Scotland)
⇨⑥ Space Blast Waiting [see page 3]

£1 fee for each game, unless otherwise stated, subsidising the cost of the zine

START

Welcome to issue #139. A couple of delays to mention first. Puerto Rico 6 and Railway Rivals 2047-DX are on hold this month. Lionel Robbins cleared out a room while having some work done and the zine is hiding in a safe place. It's probably the same safe place where I put things and then cannot find them. When you find it, Lionel, let me know where it was and I'll check the same place to see if anything I've mislaid comes to light.

This month's cover is the box for Khronos, one of the talked about games from the Essen show. The board bears the same area three times, each representing a different times - the ages of Might, Faith and Reason. Players control time travelling adventurers, each voyaging to let you construct military, religious and civil buildings. They give you the chance of becoming the richest player by the end of the game. Just because you've built something doesn't mean you can rely on it, though. It may disappear if a building is erected in an earlier time in the same place - and your first building, basically, never existed. The game lasts seven rounds, with scoring on the fourth and seventh rounds.

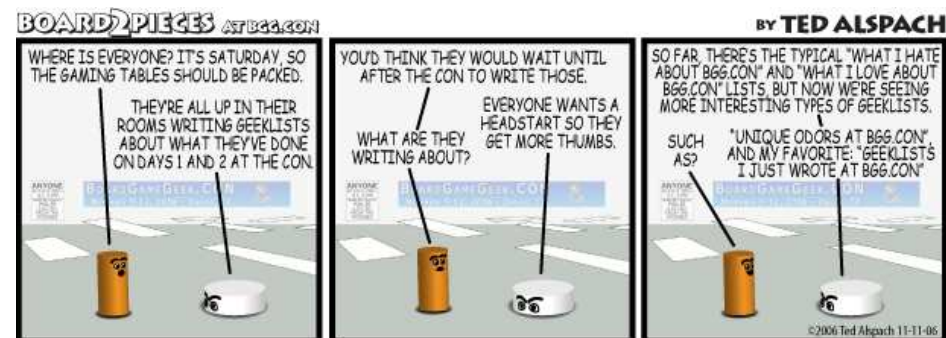
Another game I got hold of recently is Space Blast by Philippe Keyaerts, designer of Evo and Vinci. This is just what it sounds like - a space combat game. It is played on a smaller hex grid than Sopwith, but movement is pre-planned and simultaneous, as in Sopwith. Each turn players chose up to 3 action tokens from a limited supply of missiles, mines, brakes and turns. It takes up to six players but also works with fewer. The winner is the player to score the most points from damaging the other ships.

I spent last Friday at the London Toy Fair. This is the showcase for toys and games in the UK. They don't seem to be on the same planet as us. For example, one exhibitor asked me what I was looking for, and when I said strategy games, proudly took me over to view a new game, Anti-Monopoly. I'm not quite sure why he claimed it was new, as the box said it had been around since 1977, but this demonstrates what the British companies think of our games market.

Later this week I'm expecting something far more sensible from the Nuremberg Toy Fair, where they are likely to know what a real game is. ✱

Change of Address

Roger Trethewey Sea Pines, Hesketh Road, Torquay, Devon, TQ1 2LN



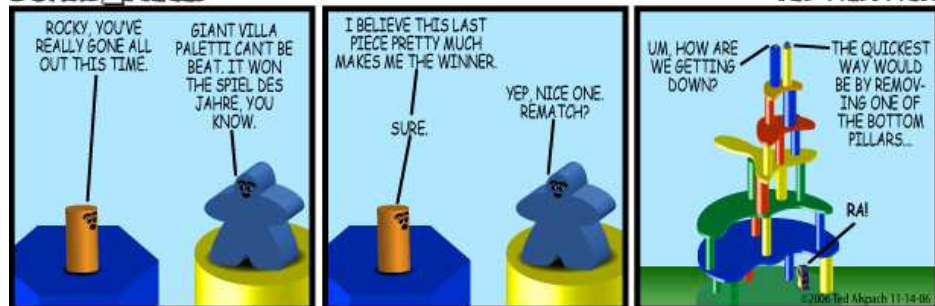
BOARDPIECES

BY TED ALSPACH



BOARDPIECES

BY TED ALSPACH



BOARDPIECES

BY TED ALSPACH



BOARDPIECES

BY TED ALSPACH



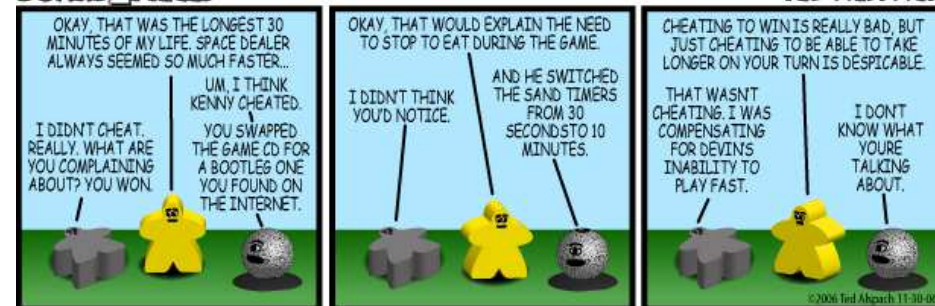
BOARDPIECES

BY TED ALSPACH



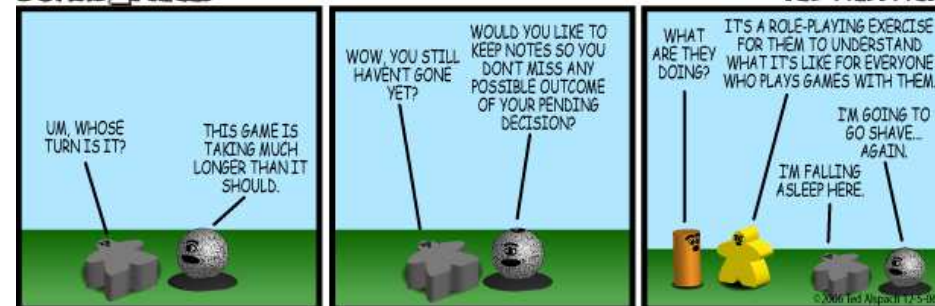
BOARDPIECES

BY TED ALSPACH



BOARDPIECES

BY TED ALSPACH



BOARDPIECES

BY TED ALSPACH





1850-R22

We're off into new territory.

NEW GAME

Your initial dealing order is as follows.

Stephen Webb	17 Gladwyn Close, Parkwood, Gillingham, Kent, ME8 9TQ
Alan Harvey	6 Serina Avenue, Littleover, Derby, DE23 6JT
Lyndon Gurr	15b Hedley Street, Maidstone, Kent, ME14 1UG
Tim Franklin	9 Brook Walk, Witham, Essex, CM8 1DQ

Your starting capital is \$525. Our first set of orders will just deal with bids and purchases for the seven Private Companies, which are:

Great River Shipping Company	GRSC	Cost	\$20	Revenue	\$5
Crédit Mobilier	CM	Cost	\$40	Revenue	\$10
Mississippi River Bridge Company	MRBC	Cost	\$40	Revenue	\$10
Grant Brothers Construction Company	GBCC	Cost	\$50	Revenue	\$10
Mesabi Mining Company	MMC	Cost	\$80	Revenue	\$15
Western Land Grant Company	WLGC	Cost	\$90	Revenue	\$20
Mississippi & Missouri Railroad	MMR	Cost	\$160	Revenue	\$20

The special features of these companies are as follows. All privates close when the first '5' train is bought, unless it says otherwise below.

◇ Great River Shipping Company

None - the classic first private company.

◇ Crédit Mobilier

As with most games, private companies can be bought by public companies for from half to twice the face value. The Crédit Mobilier is an exception to this rule, in that the UP can pay up to three times the face value for it. Whichever company buys this, the \$10 revenue goes to the President, not to the company.

The company that owns the Crédit Mobilier may do one extra yellow track lay west of the Mississippi River. The Mississippi runs from C8 through all the \$40 hexes to K12, then through L13 and M12. If the track lay is not taken before the first '5' train is bought, the company survives as a non-paying company until the first '6' train is bought, giving extra time to do that free lay.

◇ The owning company gets a free bridge over the Mississippi River at St.Louis (L13), but it cannot take the free lay and upgrade St.Louis in the same turn. If the owning company is the MP this track lay is in addition to its normal track lay/upgrade.

This private company may be bought by a public company for from half to full face value during phase two (i.e. before the first '3' train is sold).

◇ Grant Brothers Construction Company

The owning company may purchase a yellow track lay each turn for \$30, with normal terrain costs paid on top of that. This is in addition to any normal track lay or upgrade. The private survives until the first '6' train is bought as a non-revenue paying company.

◇ Mesabi Mining Range

The Mesabi Mining Range gives the owning company a Mesabi Range token which gives access to the Mesabi Range at no further cost. When other companies connect to the Mesabi Range, the company owning this private receives \$40 (half of the \$80 connection fee). It stops receiving this payment when the private company is closed.

This private company may be bought by a public company for from half to full face value during phase two (i.e. before the first '3' train is sold).

No company can connect to the Mesabi Range until this private has been bought by a public company or closed by the sale of the first '5' train. There are only four Mesabi Range tokens, so only four companies (including the company that owns the private) can run to or through the Mesabi Range. No company may own more than one Mesabi Range token.

◇ Western Land Grant Company

The owning company may lay a second tile, which must be yellow, during track laying, and can do this up to three times. Two of these extra tiles must be laid west of the Mississippi River, one can be laid anywhere. If all three track lays have not been used, this company survives until the first '6' train is bought as a non-revenue paying company.

◇ Mississippi & Missouri Railroad

Comes with a 10% share of the Chicago, Rock Island & Pacific Railway.

The wording of the rules regarding the Mesabi Range gave me some problems, and I had to seek clarification from John Tamplin. It talks about companies 'connecting' to the Range. This does not mean that there is a track connection, it means that a route being used by one of the companies trains runs to or through the Mesabi Range. A company can only use such a route the company if the company purchases one of the Mesabi Range tokens, which cost \$80.

Maps and tile sheets are enclosed for everyone, as well as rule books, just for a change. 1850 has a number of features in common with 1870, notably Share Price Protection (5.9), Redemption (5.10) and Reissue (5.11). The Stock Market has a ledge that restricts downward movement of prices to some degree. If you look at the map you will see boxed company initials in some of the red off-board hexes. These are spaces reserved for Edge tokens (7.4). I'll try and remember to remove the shading when these tokens are placed. Normal tokens cost \$40 for the first and \$100 for all others, but the Edge tokens are separate and cost \$50 each. If you have any questions, now is a good time to raise them.

After the sale of the private companies we'll have the tail end of the first stock round before we hit the first operating round. Enjoy the game.

Orders required for the following round

By the early deadline

SR1, Private Companies only, starting with Stephen





1800-120

Both companies sell shares to the bank pool.

OR9 - OR10

Willem only has \$65 cash at the start of this round. I credited him with the D&RGW credit value when he sold the share, not the share price! Always something new to get wrong...

The C&S credit of \$112 was a pure typo - should have been \$122.

OR9	Pres	Lay	Run	Pay	Notes	Price	Credit	Trains
D&RGW	WM	59:C5:6	140	Half	① ③	80E*	464	3
C&S	AH	-	40	No	② ④ ⑤	60D*	17	4

- Notes: ① 50 to the D&RGW from the D&RGW Bond
 ② 50 to the C&S from the C&S Bond
 ③ 160 to the D&RGW for the sale of 2 shares to the pool
 ④ 210 to the C&S for the sale of 3 shares to the pool
 ⑤ 430 to the bank for a '4' train - '2' train become obsolete

OR10	Pres	Lay	Run	Pay	Notes	Price	Credit	Trains
D&RGW	WM	7:B6:6	100	Yes	① ③	90E*	474	3
C&S	AH	6:C7:2	100	Yes	② ③	70D*	52	4

- Notes: ① 50 to the D&RGW from the D&RGW Bond
 ② 50 to the C&S from the C&S Bond
 ③ 40 to the bank for terrain costs

Cash Flow	b/f	OR9	OR10	c/f	Value	%	Certs
Alan Harvey	30	14	80	124	1,024	50.4*	5
Willem Moene	65	42	60	167	1,007	49.6*	3

Portfolio	PCs	C&S	D&RGW
Alan Harvey	C&S Bond	6P	2
⊛ Willem Moene	D&RGW Bond	-	6P

Bank (new)	-	-
Bank (pool)	4	2
Price	70D	90E
Company credit	52	474
Tokens	2	2
Trains	4	3
Bank cash: 2,903	Certificate limit: 7	Trains: 1 x '5', 2 x '2E'

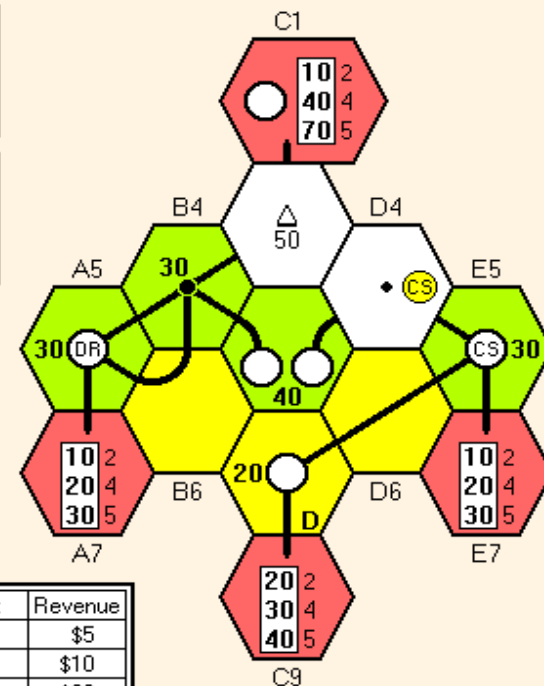
Tiles	Tile number/Availability					Two Operating Rounds between Stock Rounds									
Yellow	3/1	4/2	5/2	6/1	7/-	8/2	9/2	58/2							
Green	12/-	16/1	18/1	19/1	23/1	24/1	25/1	26/1	27/1	28/1	29/1	59/-			
	800/-	802/1													

Willem intended to buy the '4' train, but the train limit is two, so he didn't have room for it. The fact that buying the '4' would have killed off his '2' is of no consequence - you have to be below the train limit to buy a new train.

1800

Game 120

Referee:
Keith Thomasson



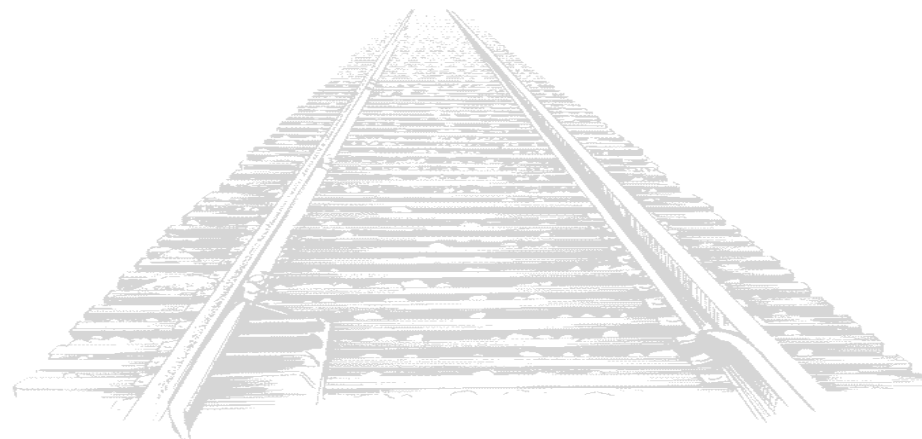
Private Companies	Cost	Revenue
1 Midland Terminal	\$20	\$5
2 Denver and Salt Lake	\$70	\$10
3 Rio Grande Southern	\$160	\$20

© Keith Thomasson 2007

Orders required for the following round

By the early deadline

SR9





1825-L21

Five out of the six tile lays are stations.

OR5 - OR6

OR5	Pres	Lay	Run	Pay	Notes	Price	Credit	Trains
Cal	AH	12:J6:1	-	130	Yes	100▲	60	3 2 2
NBR	MH	52:Q9:6	-	150	Yes	82▲	340	2 2
GSWR	MH	5:J3:2	-	-	② ③	61▼	60	3.2

- Notes: ① 100 to the bank for a token in G9
② 310 to the NBR for a '2' train
③ 300 to the bank for a '3' train

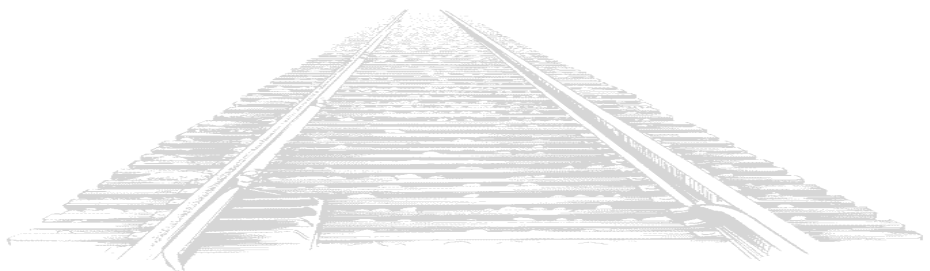
OR6	Pres	Lay	Run	Pay	Notes	Price	Credit	Trains
Cal	AH	9:J8:3	-	130	Yes	112▲	60	3 2 2
NBR	MH	15:Q7:6	-	140	Yes	90▲	30	3 3 2 2
GSWR	MH	15:Q3:1	-	70	Yes	67▲	70	2

- Notes: ① 300 to the bank for a '3' train
② 10 to the GSWR for a '3' train

Cash Flow	b/f	OR5	OR6	c/f	Value	%	Certs
Mike Hutton	27	123	151	301	1,408	44.3▼	12
Alan Harvey	16	172	176	364	1,769	55.7▲	13

Portfolio	Privates	Cal	NBR	GSWR	GNoS	High	M&C
Mike Hutton	A&F	1	7D	5D	-	-	-
Alan Harvey	TWW	9D	3	1	-	-	-
Bank (new)		-	-	4	10D	10D	10D
Price (new)		76	76	67			
Bank (pool)	S&D	-	-	-	-	-	-
Price (pool)		112	90	67			
Company credit		60	30	70			
Tokens		2	1	2			
Trains		3 2 2	3 3 2 2	2	{5}	{U3}	{3T}
Bank cash: 3,335		Certificate limit: 17			Trains: 1 x '4', 2 x '5'...		

Tiles	Tile number/Availability					Two Operating Rounds between Stock Rounds									
Yellow	1/1	2/1	3/1	4/3	5/2	6/1	7/2	8/5	9/4	55/1	56/1	115/1			
Green	12/-	13/1	14/3	15/-	16/1	19/1	23/3	24/3	26/1	27/1	28/1	29/1			
	52/1	81/1													



1825 Unit 3

Game L21

Referee: Keith Thomasson

Track may leave the grid if it connects to these areas

© Keith Thomasson 2007

Orders required for the following round	By the early deadline
SR5	



1826-E22

Three companies float.
The Alsace gets a new President.

PUBLICS

Stock Round 1 - Public companies

Stephen	Tim	John	Lyndon	Don
+ PO/Pres {90}	+ P new {floated}	+ A new {floated}	✗	✗
+ PO new {floated}	✗	+ A new	✗	✗
✗	✗	+ A new {gains Pres}	✗	✗
✗	✗			Priority for SR2

Cash Flow	b/f	Publics	c/f	Value	%	Certs
John Shelley	340	-330	10	360	16.1	3
Lyndon Gurr	210	0	210	360	16.1	2/3
Don Smith	70	0	70	580	26.0	4
Stephen Webb	360	-270	90	360	16.1	2
Tim Franklin	195	-110	85	575	25.7	3

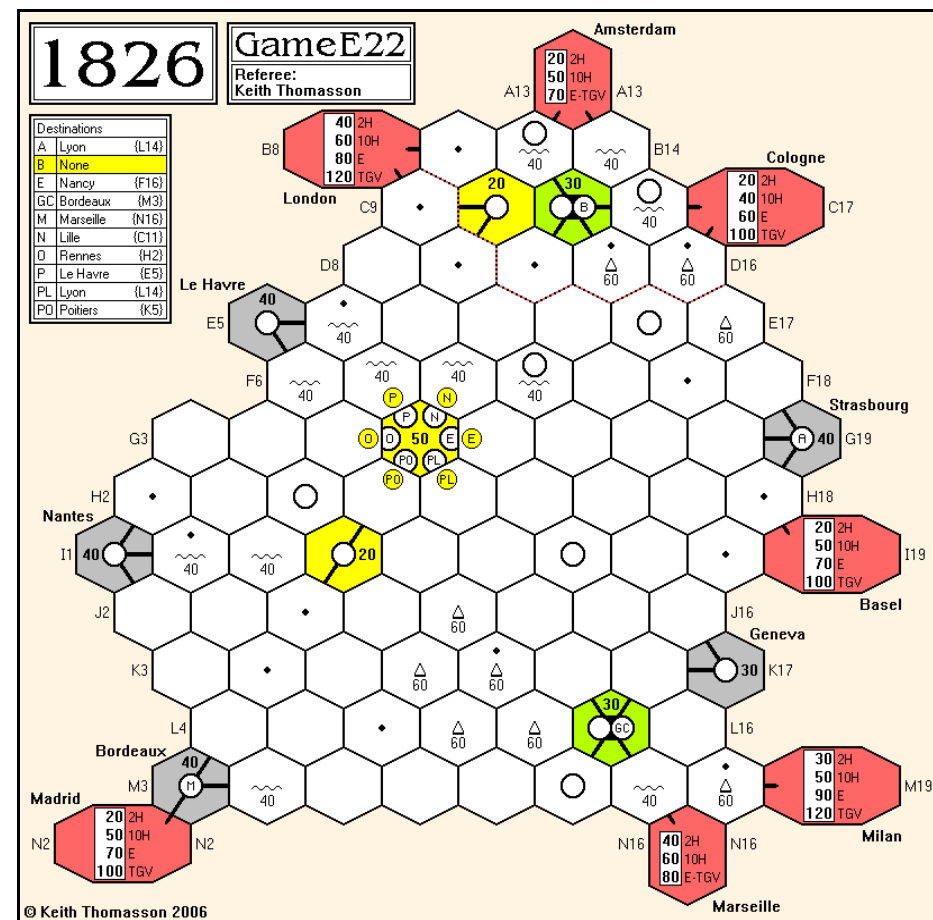
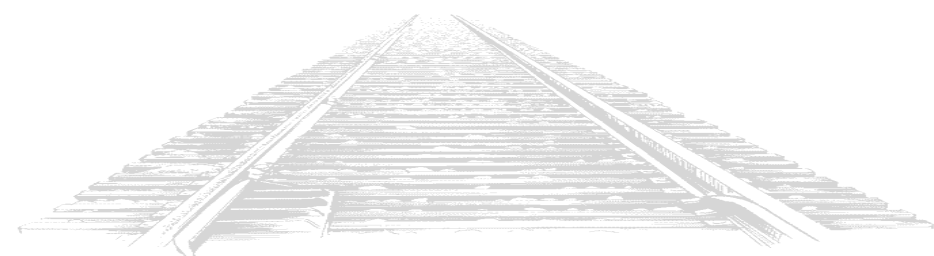
Portfolio	Privates	A	B	E	GC	M	N	O	P	PL	PO
John Shelley	Bridge	3P	-	-	-	-	-	-	-	-	-
Lyndon Gurr	Mail Belg	-	1	-	-	-	-	-	-	-	-
Don Smith	Alg Als	2	-	-	-	-	-	-	-	-	-
Stephen Webb	-	-	-	-	-	-	-	-	-	-	3P
Tim Franklin	Par	-	-	-	-	-	-	-	3P	-	-

Company type	5	10	-	-	-	-	-	-	5	-	5
Bank (new)	5	9	10	10	10	10	10	10	5	10	5
Bank (pool)	-	-	-	-	-	-	-	-	-	-	-
Treasury shares	-	-	-	-	-	-	-	-	2	-	2
Price	110A								110A		90C
Loans	-								-		-
Company credit	550								330		270
Tokens	3								3		3
Trains	-								-		-

Bank cash: 10,385 Certificate limit: 13 Trains: 8 x '2', 7 x '4'...
Current operating order P, A, PO

Tiles Tile number/Availability One Operating Round between Stock Rounds

Yellow	3/2	4/6	5/2	6/2	7/4	8/16	9/21	57/4	58/6		
--------	-----	-----	-----	-----	-----	------	------	------	------	--	--



Orders required for the following rounds

By the early deadline

OR1, SR2



1829-J19

Two high paying rounds drop the bank to under 2,000.

OR20 - OR21

OR20	Pres	Lay	Token	Run	Pay	Notes	Price	Credit	Trains
LNWR	LR	-	-	500	Yes	-	250▲	50	2+2 4
NER	LQ	-	▶J2 !	160	Yes	-	320▲	30	4
Mid	AH	24:R18:6	▶R22	350	Yes	-	142▲	10	4 4
NBR	JS	-	▶J8	270	Yes	-	90▲	0	6
Cal	JS	-	▶B12	160	Yes	-	58▲	10	3T
L&YR	DS	12:L16:5	▶K15	580	Yes	-	61▲	30	4+4E 5
GNR	AH	8:Q19:2	▶P20 !	410	Yes	-	160▲	60	5 5
GCR	DS	-	▶P12	350	Yes	-	67▲	200	6 3T
GSWR	JS	-	▶G3	200	Yes	-	47▲	20	2+2
High	Rcvr	46:D8:6	▶B10	60	No	①	58▼	110	3T

Notes: ① 10 to the bank for the hire of a '7' train

OR21	Pres	Lay	Token	Run	Pay	Notes	Price	Credit	Trains
LNWR	LR	-	-	500	Yes	-	275▲	50	2+2 4
NER	LQ	-	▶J12	160	Yes	-	335▲	30	4
Mid	AH	23:Q19:2	▶R20	350	Yes	-	160▲	10	4 4
NBR	JS	-	▶J8	270	Yes	-	100▲	0	6
Cal	JS	-	▶B12	160	Yes	-	61▲	10	3T
L&YR	DS	-	▶M17	580	Yes	-	64▲	30	4+4E 5
GNR	AH	7:P20:6	▶R22	410	Yes	-	180▲	60	5 5
GCR	DS	7:P12:2	▶Q11	410	Yes	①	71▲	40	6 3T
GSWR	JS	-	▶G3	200	Yes	-	53▲	20	2+2
High	Rcvr	9:B10:1	▶C9	60	No	②	56▼	160	3T

Notes: ① 160 to the bank for terrain costs
② 10 to the bank for the hire of a '7' train

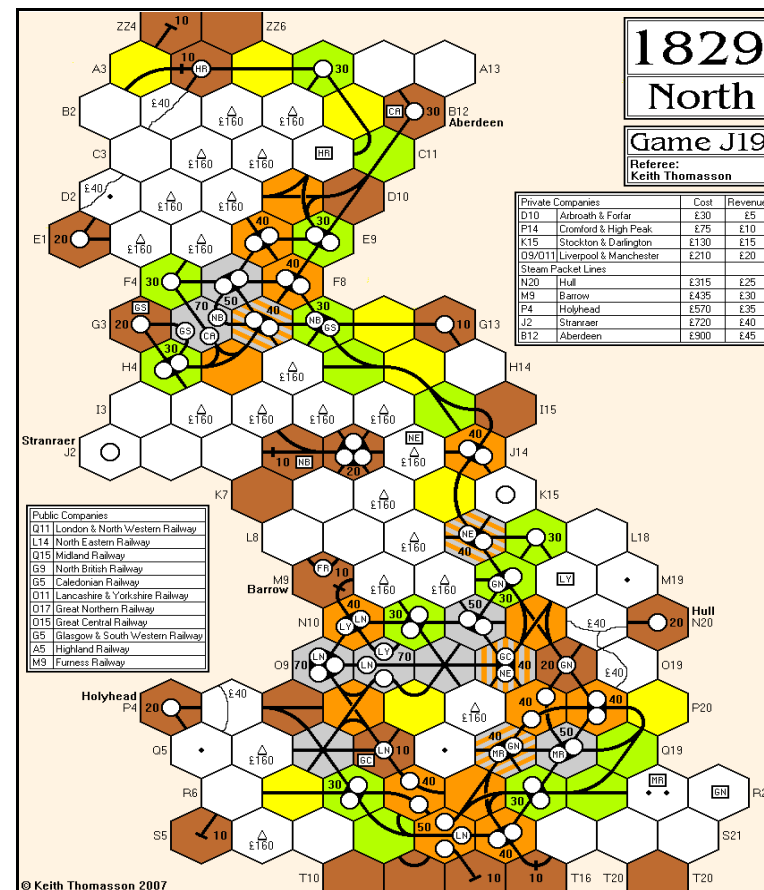
Cash Flow	b/f	OR20	OR21	c/f	Value	%	Certs
Lyndon Gurr	2,687	615	639	3,941	8,368	24.5▼	17
Alan Harvey	4,017	652	658	5,327	7,906	23.2▼	17
David Smith	3,257	750	780	4,787	7,097	20.8▲	17
John Shelley	1,299	479	479	2,257	3,766	11.0▲	17
Lionel Robbins	584	659	659	1,902	7,007	20.5▲	17

Portfolio	Packets	LNWR	NER	Mid	NBR	Cal	L&YR	GNR	GCR	GSWR	High	Furn
• Lyndon Gurr	Aberdeen	3	6D	-	1	-	2	1	4	-	-	-
Alan Harvey	-	1	-	5D	-	3	1	6D	1	2	-	-
David Smith	Holyhead	-	1	-	2	-	6D	2	5D	2	-	-
John Shelley	-	-	-	-	7D	7D	1	-	-	6D	-	-
Lionel Robbins	Hull, Barrow, Stranraer	6D	3	5	-	-	-	1	-	-	-	-

Bank (new)	-	-	-	-	-	-	-	-	-	-	2	10P
Price (new)	100	90	82	76	71	67	64	61	58	56	-	-
Bank (pool)	-	-	-	-	-	-	-	-	-	-	8D	-
Price (pool)	275	335	160	100	61	64	180	71	53	56	-	-
Company credit	50	30	10	0	10	30	60	40	20	160	-	-
Tokens	-	3	3	2	3	2	1	3	1	3	3	3
Trains	2+2	4	4 4	6	3T	4+4E	5 5	6 3T	2+2	3T	-	-
	4	-	-	-	-	5	-	-	-	-	-	-
Bank cash: 1,786	Certificate limit: 17				Trains: 4 x '7', 1 x '4+4E'							

Tiles	Tile number/Availability										Four Operating Rounds between Stock Rounds	
Yellow	1/2	2/2	3/2	4/6	5/4	6/4	7/2	8/5	9/6			
Green	10/3	12/-	13/3	14/-	15/-	16/1	17/1	18/-	19/2	20/2	21/1	22/1
	23/2	24/2	25/2	26/2	27/2	28/-	29/1	30/1	31/1			
Russet	33/1	34/-	35/-	36/-	37/1	38/-	39/-	40/1	41/2	42/2	43/-	44/-
	45/1	46/-	47/1									
Grey	49/-	50/-	51/-	60/-	166/-							

We shouldn't need more than one more operating round to run the bank out, but if you're doing something that might prevent that, I'm offering two rounds as usual.



Orders required for the following rounds

By the early deadline

OR22, OR23



1829-C20

There's a run through the companies, and they're all out.

SR11

Stock Round 11

David	Peter	Don	Martin
Close S&M private + GER new	+ GCR/Director	- 4 LBSC - 2 Midland + GCR new	+ GWR pool
- 5 LBSC (Receiver) + GCR new	+ GCR new	+ GCR new (floated)	✗
+ GCR new	+ GCR new	+ GCR new	✗
+ GCR new	- 1 LNWR + L&YR/Director	✗	✗
+ L&YR new	+ L&YR new	✗	✗
- 1 GCR + L&YR new	+ L&YR new (floated)	✗	✗
- 1 GCR + L&YR new	- 1 LSWR + L&YR new	✗	- 1 GER + LSWR pool
- 1 GCR + L&YR new	+ L&YR new	✗	✗
- 1 L&YR + SECR/Director	✗	✗	✗
- 1 L&YR + SECR new	✗	✗	✗
- 1 L&YR + SECR new	✗	✗	✗
- 1 L&YR + SECR new	✗	✗	✗
- 1 LNWR + SECR new (floated)	✗	✗	✗
- 1 SECR + GER pool	✗	✗	✗
✗	Priority for SR12		

Portfolio	Privates	LNWR	GWR	Mid	LSWR	GNR	LBSC	GER	GCR	L&YR	SECR
David Smith	-	-	1	2	2	8D	-	2	-	-	5D
✶ Peter Berlin	L&M	-	-	6D	-	1	-	-	4D	6D	-
Don Shailer	C&HP	5D	2	-	-	1	-	2	3	-	-
Martin Butcher	-	-	6D	-	8D	-	-	6D	-	-	-

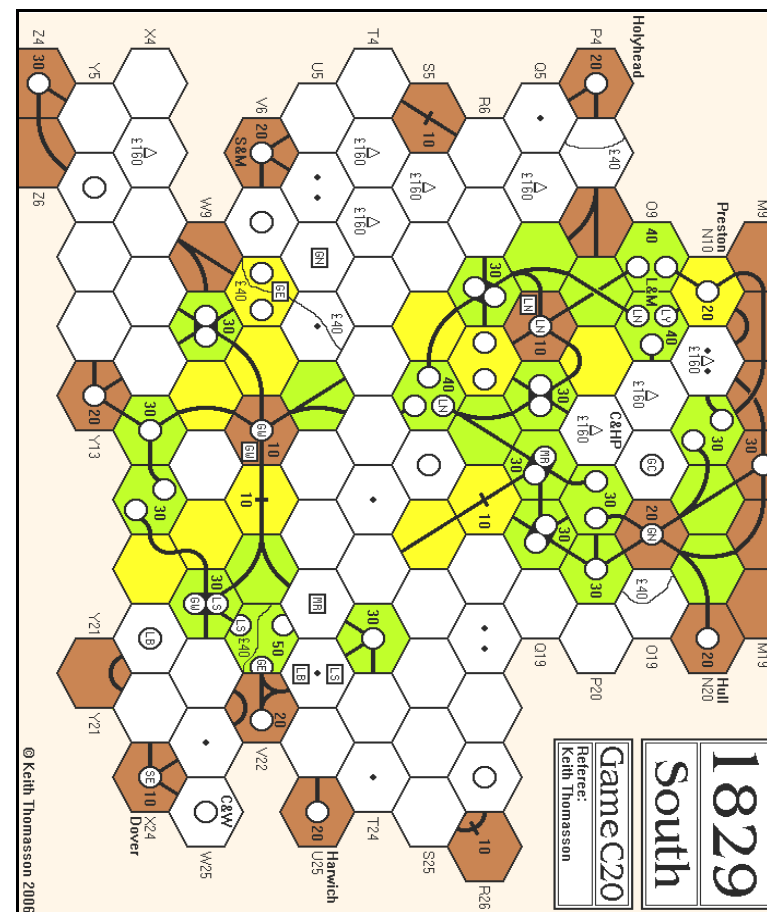
Bank (new)	Hull...	-	-	-	-	-	-	-	-	-	4
Price (new)		100	90	82	76	71	67	64	61	58	56
Bank (pool)	C&W	5	1	2	-	-	10D	-	3	4	1
Price (pool)		180	250	100	126	112	56	64	61	58	56
Company credit		440	90	340	30	220	10	100	610	580	560
Tokens		3	4	4	4	4	3	3	4	3	3
Trains		3222	4432	32	32	433	-	2	-	-	-
Bank cash: 19,013		Certificate limit: 18				Trains: 2 x '4', 5 x '5'...					

Cash Flow	b/f	SR11	c/f	Value	%	Certs
David Smith	422	52	474	2,480	26.7	18
Peter Berlin	320	-286	34	1,548	16.7	15
Don Shailer	183	241	424	2,322	25.0	13
Martin Butcher	367	-312	55	2,947	31.7	17

Tiles

Two Operating Rounds between Share Dealing Rounds

Yellow	1/2	2/2	3/2	4/4	5/4	6/3	7/1	8/5	9/9			
Green	10/-	12/1	13/2	14/-	15/-	16/1	17/1	18/1	19/2	20/1	21/1	22/1
	23/3	24/2	25/-	26/2	27/2	28/-	29/1	30/1	31/1			



Orders required for the following rounds

By the early deadline

OR14, OR15

Adjudication can pause between rounds if requested



1829-V21

It's a short one this month.

OR4

OR4	Pres	Lay	Token	Run	Pay	Notes	Price	Credit	Trains
LNWR	PB	4:R10:1	•S11	50	Yes	①	126▲	600	2 2
NER	MH	7:L18:6	•M17	-	-	-	67▼	500	2 2

Notes: ① 180 to the bank for a '2' train

Cash Flow	b/f	OR4	c/f	Value	%	Certs
Rob Thomasson	267	15	282	564	18.8▲	3
Lionel Robbins	166	25	191	594	19.8▼	3
Peter Berlin	99	25	124	644	21.5▲	4
John Hopkins	305	20	325	581	19.4▼	2
Mike Hutton	16	15	31	610	20.4▲	5

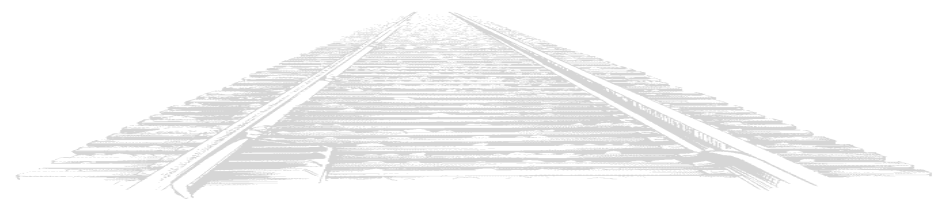
Portfolio	Privates	LNWR	NER	Mid	NBR	Cal	L&YR	GNR	GCR	GSW	High	Furn
• Rob Thomasson	A&F	2	-	-	-	-	-	-	-	-	-	-
Lionel Robbins	L&M	1	1	-	-	-	-	-	-	-	-	-
Peter Berlin	C&HP	3D	1	-	-	-	-	-	-	-	-	-
John Hopkins	S&D	2	-	-	-	-	-	-	-	-	-	-
Mike Hutton	-	3	3D	-	-	-	-	-	-	-	-	-

Bank (new)	Hull...	-	3	10P	10P	10P	10P	10P	10P	10P	10P	10P
Price (new)		100	90	82	76	71	67	64	61	58	56	53
Bank (pool)		-	2									
Price (pool)		126	67									
Company credit		600	500									
Tokens		5	5	5	4	4	4	4	4	3	3	3
Trains		2 2	2 2									
Bank cash: 19,047		Certificate limit: 18						Trains: 3 x '2', 5 x '3'...				

Tiles	Tile number/Availability								One Operating Round between Stock Rounds			
Yellow	1/2	2/2	3/2	4/5	5/3	6/4	7/3	8/8	9/9			

Our rather brief session this time is because Lionel can't find his zine to send orders, due to having to tidy things away while having some work done in the house. Having only recently started to get back to normal after our extension work, I can sympathise.

I had a query on survey parties. You cannot move a survey party onto a laid tile unless it is being converted into a station marker. Rule 41.4 specifically points out that the green and russet hexes on the board are considered to be tiles as far as token movement is concerned, so this prohibits anyone from moving a survey party onto one of these hexes without converting it to a station marker. The survey party becomes a station marker when it is moved, and a new survey party is placed on your home base for future use.



1829

North

Game V21

Referee:
Keith Thomasson

Private Companies	Cost	Revenue
D10 Arbroath & Forfar	£30	£5
P14 Cromford & High Peak	£75	£10
K15 Stockton & Darlington	£130	£15
O9/O11 Liverpool & Manchester	£210	£20
Steam Packet Lines		
N20 Hull	£315	£25
M9 Barrow	£435	£30
P4 Holyhead	£570	£35
J2 Stranraer	£720	£40
B12 Aberdeen	£900	£45

© Keith Thomasson 2007

Orders required for the following round

By the early deadline

SR5



1830-G20

The first '6' trains arrives, and the first Diesel hits the rails right away.

OR11

OR11	Pres	Lay	Run	Pay	Notes	Price	Credit	Trains
NYC	DS	24:D16:3	370	Yes	-	200B▲	28	5
Erie	WM	66:D10:3	170	Yes	-	160B▲	90	5
PRR	MB	24:I17:6	190	Yes	-	110D▲	618	-
NYNH	DS	57:F16:3	370	Yes	①	75F▲	249	5
CPR	RK	57:B10:1	80	No	②	69G▼	49	6
B&O	RK	57:H4:3	-	-	③ ④	63G▼	12	D
B&M	SW	9:D22:3	-	-	① ⑤	40J▼	0	6
C&O	WM	-	-	-	⑥	20H▼	0	D

- Notes: ① 120 to the bank for terrain costs
 ② 630 to the bank for a '6' train - '3' trains become obsolete
 ③ 200 to the PRR for a '4' train
 ④ 800 and a '4' train to the bank for a Diesel - '4' trains become obsolete
 ⑤ 630 to the bank for a '6' train, partly funded by 80 from Stephen
 ⑥ 1,100 to the bank for a Diesel, partly funded by 465 from Willem, requiring the sale of 1 B&O (▼63G), 1 NYNH (▼75F) and 1 Erie (▼160B)

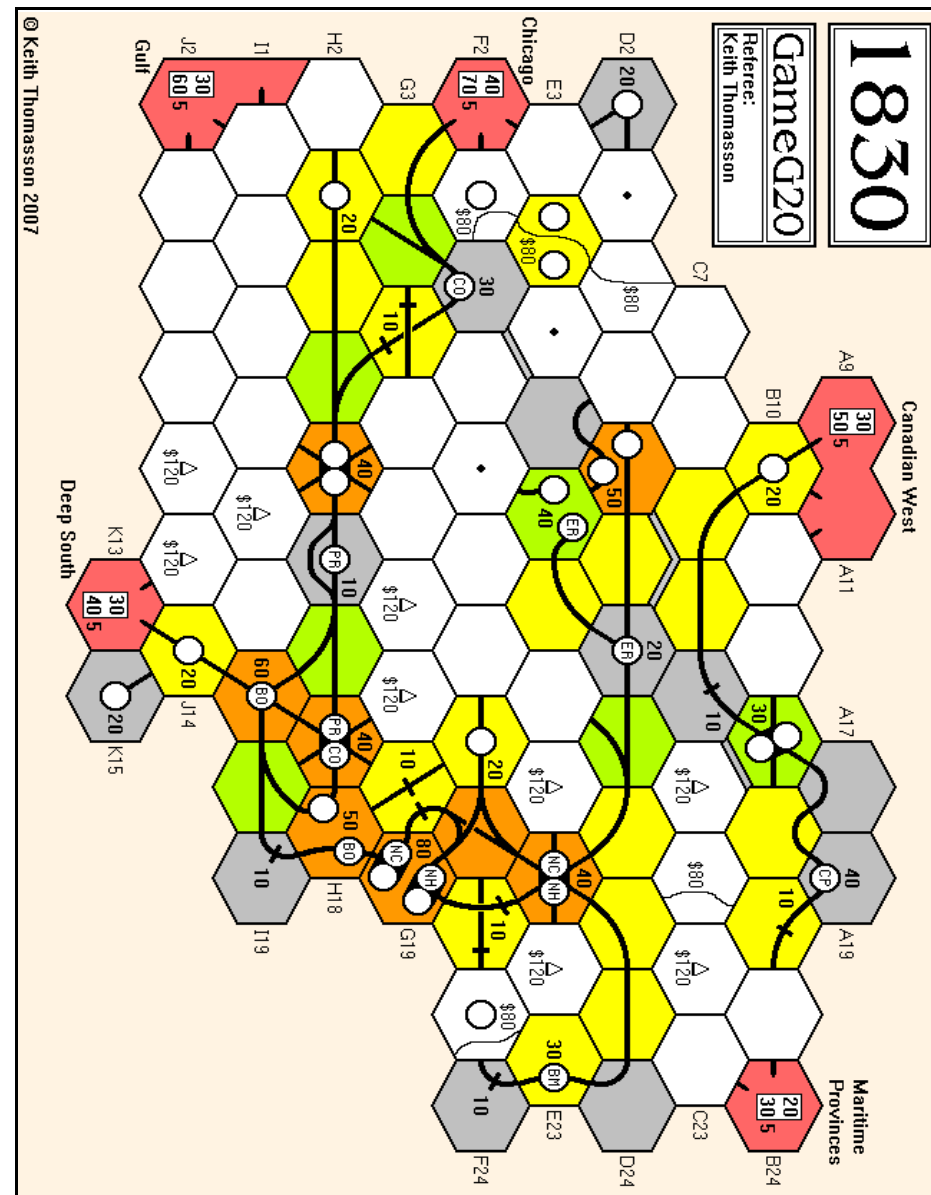
Cash Flow	b/f	OR11	c/f	Value	%	Certs
Stephen Webb	41	68	109	1,235	16.6▼	6/10
Martin Butcher	344	202	546	1,781	24.0▲	9/10
Willem Moene	16	1	17	997	13.4▼	4/12
Don Smith	12	461	473	2,323	31.3▲	11/12
Roger Krueger	20	112	132	1,093	14.7▲	11

Portfolio	PRR	NYC	CPR	B&O	C&O	Erie	NYNH	B&M
Stephen Webb	-	4	-	2	-	-	-	5P
Martin Butcher	6P	-	-	-	1	3	1	-
Willem Moene	-	-	-	-	9P	5P	-	-
Don Smith	-	6P	-	-	-	1	6P	1
Roger Krueger	2	-	4P	5P	-	-	2	-

Bank (new)	-	-	4	-	-	-	-	-
Price (new)	76	90	76	100	67	100	71	67
Bank (pool)	2	-	2	3	-	1	1	4
Price (pool)	110D	200B	69G	63G	20H	160B	75F	40J
Company credit	618	28	49	12	0	90	249	0
Tokens	2	2	3	1	1	1	-	1
Trains	-	5	6	D	D	5	5	6

Bank cash: 9,677 Certificate limit: 13 Trains: Diesels
 Current operating order: NYC, Erie, PRR, NYNH, CPR, B&O, B&M, C&O

Tiles	Tile number/Availability										Three Operating Rounds between Stock Rounds		
Yellow	1/1	2/-	3/2	4/2	7/3	8/3	9/3	55/-	56/1	57/-	58/1	69/-	
Green	14/2	15/2	16/1	18/1	19/1	20/1	23/-	24/1	25/1	26/1	27/1	28/1	
	29/1	53/2	54/1	59/1									
Brown	39/1	40/1	41/2	42/2	43/2	44/1	45/1	46/2	47/1	61/1	62/-	63/-	
	64/-	65/1	66/-	67/1	68/1	70/1							



Orders required for the following rounds

By the early deadline

OR12, OR13



1830-R20

We have two requests to pause,
so we have just one round.

OR8

OR8	Pres	Lay	Run	Pay	Notes	Price	Credit	Trains
B&O	DS	61:I15:1	270	Yes	①	126B	220	4
NYNH	MF	64:H18:4	370	Yes	-	110D	43	5
NYC	WM	57:E19:3	-	-	②	76C	121	-
C&O	MH	28:F18:6	340	No	-	67E	345	5 4
B&M	MF	63:F16:1	380	Yes	-	76E	36	5
PRR	WM	-	100	No	③	67H	42	6 6
Erie	MH	-	-	-	-	45G	0	4
CPR	RL	8:C11:3	110	No	-	40J	240	4

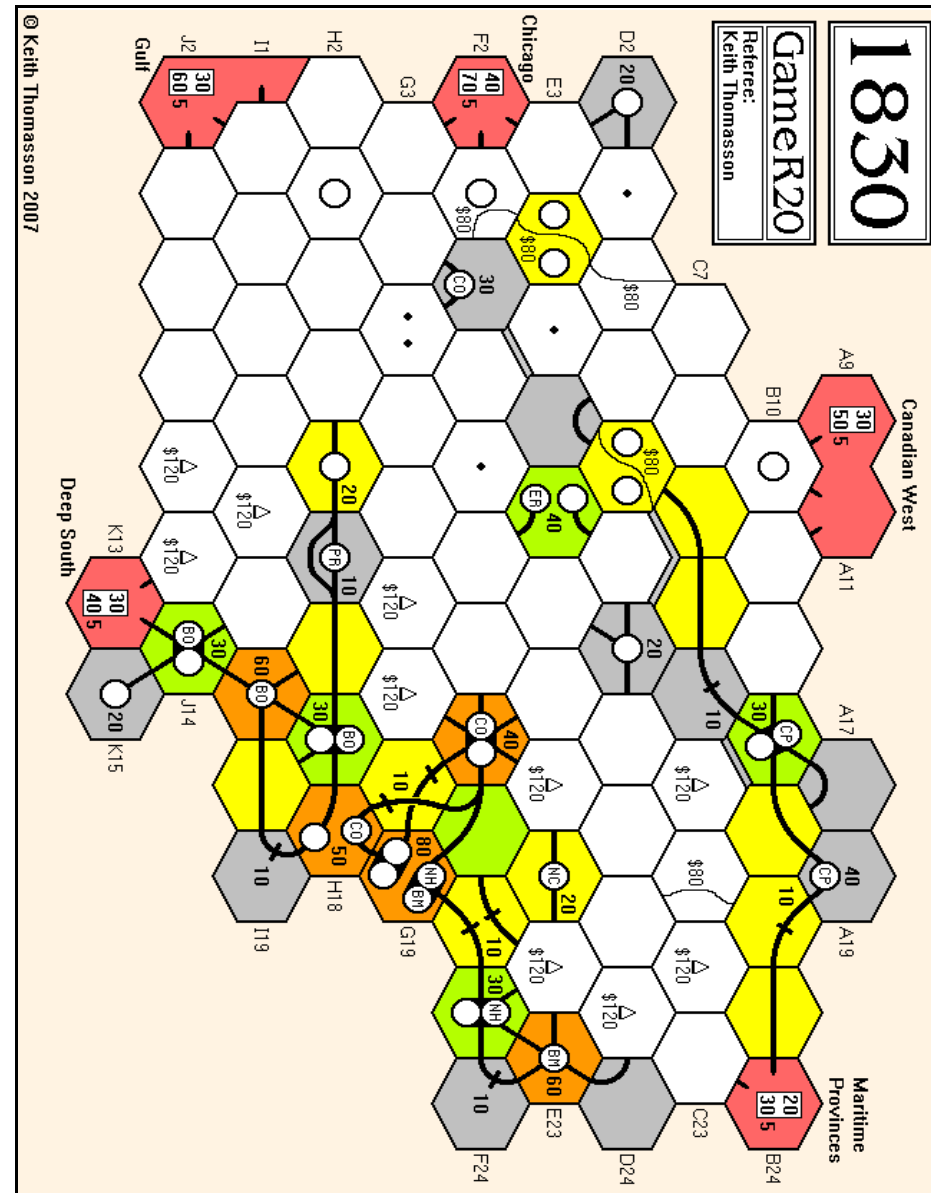
- Notes: ① 100 to the bank for a token in H16
 ② 699 to the PRR for a '3' train
 ③ 1,260 to the bank for two '6' trains - '3' trains become obsolete

Cash Flow	b/f	OR8	c/f	Value	%	Certs
Richard Lunn	43	178	221	1,005	17.7	5/12
Mark Frueh	3	477	480	1,874	33.1	12/14
Willem Moene	17	0	17	607	10.7	6
Don Smith	30	172	202	1,170	20.7	8
Mike Hutton	60	102	162	1,006	17.8	8/10

Portfolio	PRR	NYC	CPR	B&O	C&O	Erie	NYNH	B&M
Richard Lunn	-	-	8P	1	-	-	1	3
Mark Frueh	-	-	1	1	1	1	6P	6P
Willem Moene	2P	6P	-	-	-	-	1	-
Don Smith	-	3	-	5P	-	-	-	-
Mike Hutton	1	-	1	1	5P	2P	1	1

Bank (new)	3	1	-	2	4	4	-	-
Price (new)	90	82	71	100	76	82	76	71
Bank (pool)	4	-	-	-	-	3	1	-
Price (pool)	67H	76C	40J	126B	67E	45G	110D	76E
Company credit	42	121	240	220	345	0	43	36
Tokens	3	4	2	-	-	2	-	-
Trains	6 6	-	4	4	5 4	4	5	5
Bank cash: 9.871	Certificate limit: 13				Trains: Diesels			
Current operating order:	B&O, NYNH, B&M NYC, PRR, C&O, Erie, CPR							

Tiles	Tile number/Availability												Three Operating Rounds between Stock Rounds											
Yellow	1/-	2/1	3/2	4/2	7/4	8/6	9/3	55/1	56/-	57/2	58/1	69/1												
Green	14/1	15/-	16/1	18/1	19/1	20/1	23/3	24/3	25/1	26/1	27/1	28/-												
	29/1	53/2	54/1	59/1																				
Brown	39/1	40/1	41/2	42/2	43/2	44/1	45/2	46/2	47/1	61/-	62/-	63/2												
	64/-	65/1	66/1	67/1	68/1	70/1																		



Orders required for the following rounds *By the early deadline*
 OR9, OR10 *Adjudication can pause between rounds if requested*



1830-F21

Just one round, which
sees three new '4' trains.

OR5

OR5	Pres	Lay	Run	Pay	Notes	Price	Credit	Trains
B&O	DS	57:J14:2	-	-	① ②	90A	740	3
B&M	WM	53:E23:2	-	-	③ ④	90A	400	4
NYC	MH	23:F18:2	80	No	-	76C	595	3
Erie	MS	59:E11:3	-	-	⑤	67E	410	4
PRR	MS	59:H18:4	80	Yes	⑥	75F	201	3
C&O	TS	55:G7:1	120	Yes	-	75F	266	3 3
NYNH	WM	-	-	-	⑤	50I	105	4

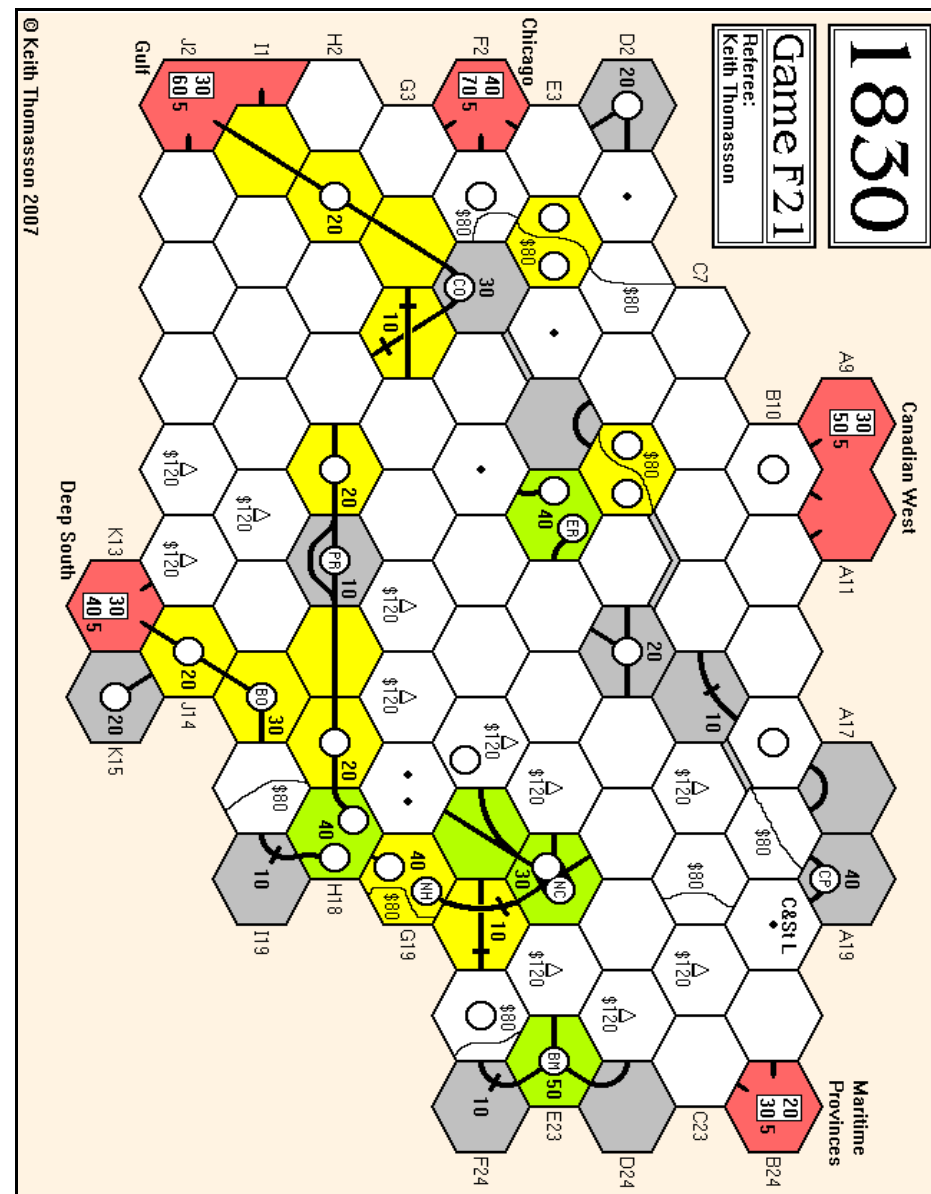
- Notes: ① 80 to the bank for terrain costs
 ② 180 to the bank for a '3' train - the B&O private closes
 ③ 300 to the NYNH for a '2' train
 ④ 300 to the bank for a '4' train - '2' trains become obsolete
 ⑤ 300 to the bank for a '4' train
 ⑥ 40 to the bank for a token in H18

Cash Flow	b/f	OR5	c/f	Value	%	Certs
Mark Stretch	47	32	79	831	22.3	8/9
Willem Moene	19	12	31	796	21.3	6/8
Don Smith	34	40	74	654	17.5	6
Tony Sait	0	88	88	738	19.8	7/8
Mike Head	25	16	41	714	19.1	8

Portfolio	Privates	PRR	NYC	CPR	B&O	C&O	Erie	NYNH	B&M
Mark Stretch	-	4P	-	-	-	-	6P	1	-
Willem Moene	-	-	-	-	-	1	-	3P	6P
Don Smith	C&StL	-	-	-	6P	-	-	-	-
Tony Sait	-	2	-	-	-	6P	-	1	-
Mike Head	-	2	6P	-	-	-	1	-	-

Bank (new)	-	4	10P	4	-	3	-	4
Price (new)	67	82		100	67	71	67	100
Bank (pool)	2		-	-	3		5	-
Price (pool)	75F	76C		90A	75F	67E	50I	90A
Company credit	201	595		740	266	410	105	400
Tokens	2	3	4	2	2	2	1	1
Trains	3	3		3	3 3	4	4	4
Bank cash: 8,970	Certificate limit: 13				Trains: 1 x '4', 3 x '5'			
Current operating order:	NYC, B&O, B&M, PRR, C&O, Erie, NYNH							

Tiles	Tile number/Availability				Two Operating Rounds between Stock Rounds							
Yellow	1/1	2/1	3/2	4/2	7/4	8/8	9/4	55/-	56/1	57/-	58/2	69/-
Green	14/3	15/1	16/1	18/1	19/1	20/1	23/2	24/3	25/1	26/1	27/1	28/1
	29/1	53/1	54/1	59/-								



Orders required for the following rounds	By the early deadline
OR6, SR5	Adjudication can pause between rounds if requested



1835-B21

Three new flotations.

SR7

Stock Round 7

John	Willem	Mark	Tony	Don
+ WtE/Dir	- 1 ByE {▼126E} - 1 SxE {▼94D} + BaE/Dir	+ SxE pool {gains Dir}	+ HeE new	+ OIE/Dir
+ WtE new	+ BaE new	+ PrE new	+ HeE new	+ OIE new 20%
+ WtE new	+ BaE new	✗	+ HeE new {floated}	✗
+ WtE new {floated}	+ BaE new {floated}	✗	✗	✗
✗	✗	Priority for SR8		

Cash Flow	b/f	SR7	c/f	Value	%	Certs
Willem Moene	342	-182	160	856	18.2	7
Mark Stretch	264	-248	16	533	11.3	6
Tony Sait	304	-252	52	1,030	21.9	10
Don Smith	344	-320	24	1,062	22.6	8
John Shelley	449	-420	29	1,221	26.0	11

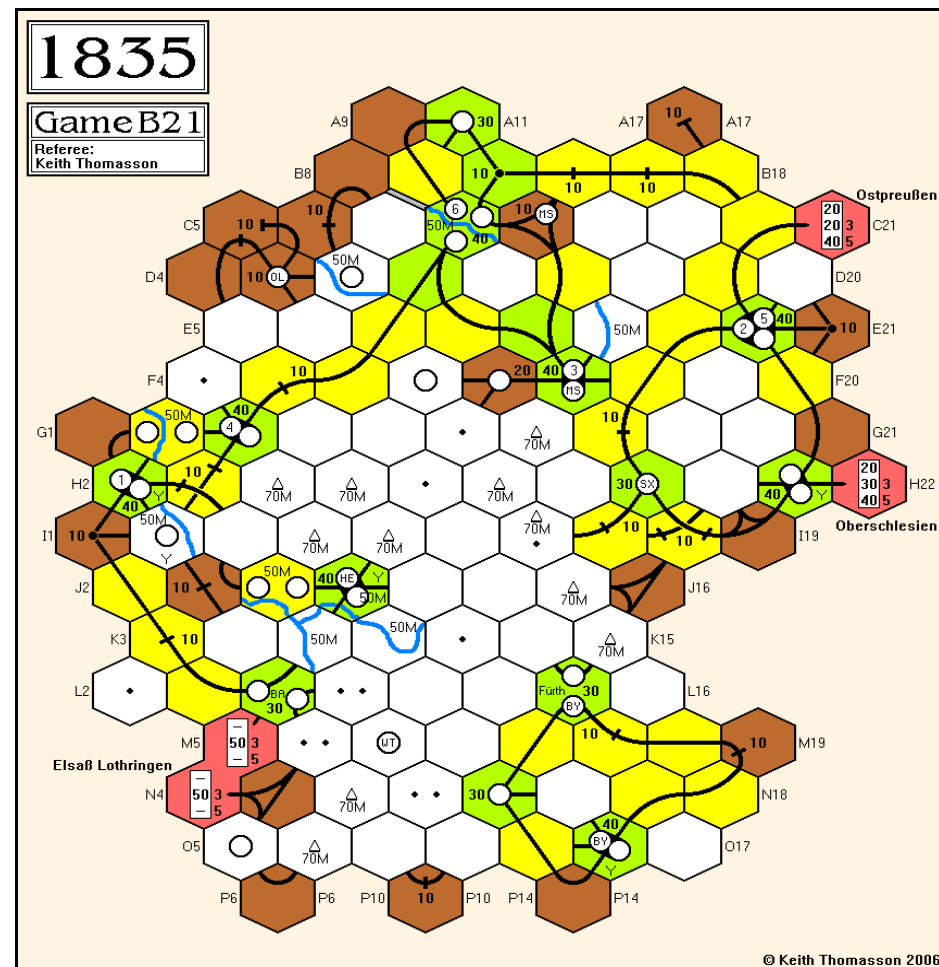
Portfolio	Privates	PrE	ByE	SxE	BaE	WtE	HeE	MsE	OIE
Willem Moene	Han / K-M	-	-	10/1	50/4	-	-	-	-
Mark Stretch	B-P	10/1	-	50/4	-	-	-	-	-
Tony Sait	Pfa / B-M	-	-	40/4	-	-	50/4	-	-
Don Smith	N-F, Bra / Mag	-	-	-	-	-	-	60/3	40/2
John Shelley	B-S, A-K	-	60/5	-	-	50/4	-	-	-

Bank (new)	30/3	-	-	100/8	100/8	80/7	40/4	100/7
Price (new)	154	92	88	84	84	84	80	80
Bank (pool)	-	40/4	-	-	-	-	-	-
Price (pool)	-	126E	100C	84D	84D	84D	80E	-
Company credit	441	235	420	420	420	190	-	-
Trains	3 2+2	3+3	-	-	-	3	-	-
	2.2	3.3	-	-	-	-	-	-

Bank cash: 8,778 Certificate limit: 12 Trains: 2 x '3+3', 3 x '4'...

Current operating order: Minors, ByE, SxE, HeE, WtE, BaE, MsE

Tiles	Tile number/Availability												Two Operating Rounds between Stock Rounds			
Yellow	1/1	2/1	3/2	4/-	5/3	6/3	7/8	8/6	9/4	55/1	56/-	57/2				
	58/-	69/1	201/2	202/2												
Green	12/-	13/2	14/2	15/-	16/2	18/1	19/2	20/2	23/3	24/2	25/2	26/2				
	27/2	28/2	29/2	87/2	88/2	203/1	204/2	205/-	206/1	207/-	208/1	209/-				
	210/1	211/1	212/1	213/1	214/-	215/1										



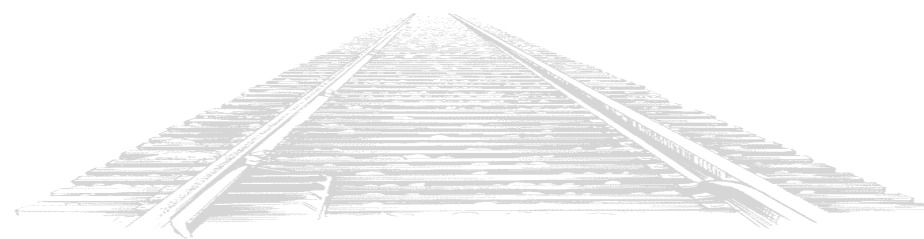
© Keith Thomasson 2006

Orders required for the following rounds

By the early deadline

OR8, OR9

Adjudication can pause between rounds if requested





1837-G21

Just one round,
and I can't blame you.

OR5

Tony exchanges the EOD an Ms share. Don exchanges the EHS for a Th share,

OR5	Pres	Lay	Run	Mines	Pay	Notes	Price	Credit	Trains
EKT	DS	8:F24:2	50	25	Half	①		2	1G
MLB	GH	207:C33:3	60	20	Half	-		165	1G
ZKB	DS	408:H30:3	-	-	-	② ③		35	1G
SPB	SW	408:J28:4	40	30	Half	④		1	1G
LRB	SW	424:I21:6	40	25	Half	⑤		1	1G
BB	DS	8:K15:3	30	35	Half	-		125	1G
S1	SW	25:I19:2	60	-	Half	⑥		105	3
S2	TR	406:J16:3	50	-	Half	⑦		0	2
S3	SW	208:I7:3	60	-	Half	⑧		0	2
S4	GH	206:K5:5	70	-	Half	-		220	-
S5	GH	207:L2:1	70	-	Half	⑨		0	2
K1	SW	429:E17:6	50	-	Half	⑩		99	2G
K2	TR	427:G17:1	80	-	Half	⑪		5	2
K3	TR	408:Q13:3	-	-	-	⑫		20	3
U1	DS	422:G27:2	110	-	Half	-		120	2
U2	DS	-	50	-	Half	-		50	2
U3	TR	425:H22:1	100	-	Half	⑬		5	3
Sb	GH	-	-	-	-	⑭	93B▼	136	3 2G 2G
Th	DS	23:G25:3	50	Yes	25	⑮ ⑯ ⑰	95C▲	561	2G 2G 1G
Bk	SW	24:D16:1	70	Yes	-	⑱ ⑲	93D▲	241	3+1 3 2G
Ms	TR	87:F18:4	80	Yes	20	⑳	73G▲	180	3+1 2G 1G

- Notes: ① 120 to the ZKB for a '1G' train
 ② 230 to the bank for a '2G' train
 ③ 2 to the EKT for a '1G' train
 ④ 180 to the Bk for a '2G' train
 ⑤ 115 to the Bk for a '2G' train
 ⑥ 180 to the bank for a '3' train
 ⑦ 85 to the U3 for a '2' train
 ⑧ 105 to the S1 for a '2' train
 ⑨ 110 to the S4 for a '2' train
 ⑩ 1 to the SPB for a '2G' train
 ⑪ 125 to the K3 for a '2' train
 ⑫ 640 to the bank for a '3' train and two '2G' trains
 ⑬ 80 to the bank for a token in C23
 ⑭ 2 to the ZKB for a '2G' train
 ⑮ 1 to the LRB for a '2G' train
 ⑯ 280 to the bank for a '3+1' train - several minor companies lose '2' trains as their train limit is reduced to one
 ⑰ 510 to the bank for a '2G' train and a '3+1' train

Cash Flow	b/f	OR5	c/f	Value	%	Certs
Stephen Webb	222	164	386	1,339	25.2▲	9
Don Smith	14	150	164	1,304	24.5▲	11
Tony Robbins	14	122	136	1,157	21.7▼	11
Geoff Hardingham	11	222	233	1,521	28.6▲	13

Portfolio	Mountain Railways etc	Bh	Bk	Cl	Gt	Kk	Ms	Sb	Sd	Th	Uq
★ Stephen Webb	A S SPB LRB S1 S3 K1	-	2D	-	-	-	-	-	1	-	-
Don Smith	EKT ZKB BB U1 *2 U2	-	-	-	-	-	-	-	-	5D	-
Tony Robbins	Kara S2 K2 K3 U3/P	-	1	-	-	-	5D	-	-	-	-
Geoff Hardingham	B Kart T W MLB S4 S5 U3	-	1	-	-	-	-	5D	-	-	-

Bank (new)	9	1	9	10	7	3	3	4	3	5
Price (new)	104				120	70	97	142	91	175
Bank (pool)	-	5	-	-	-	-	-	-	-	-
Price (pool)	93D				73G	93B		95C		
Company credit	-	241	-	-	-	180	136	-	561	-
Tokens	3	2	3	3	-	3	3	-	2	-
Trains	-	3+1	-	-	-	3+1	2	-	2G	-
		3				2G	2G		2G	
		2G				1G	2G		1G	

Bank cash: 12,396 Certificate limit: 21 Trains: 1 x '2G', 4 x '4'..

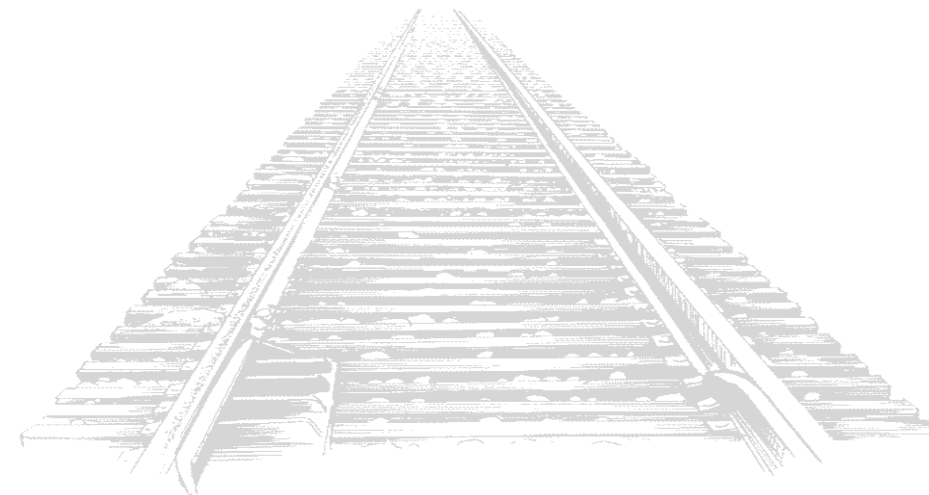
Second hand: 8 x '2', 2 x '1G'

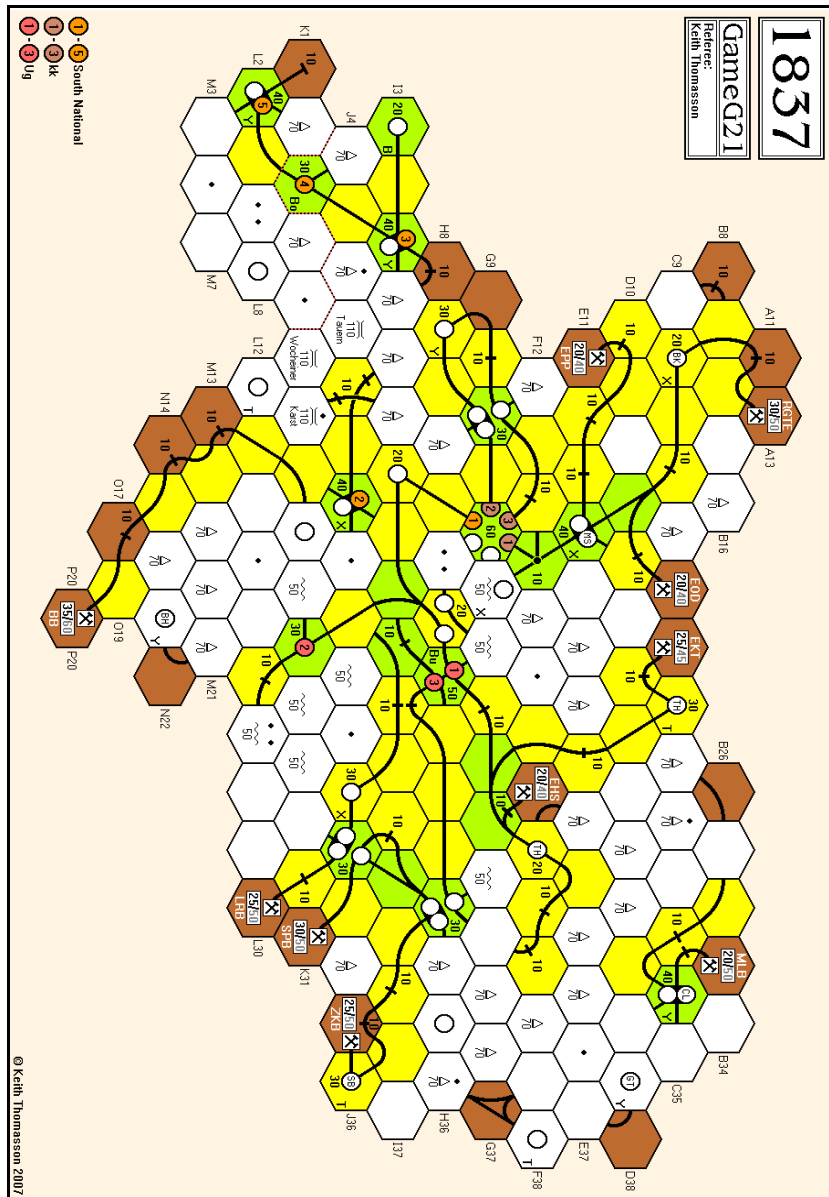
Current operating order: Coal companies, S1-S5, K1-K3, U1-U3, Th, Bk, Sb, Ms

Tiles	Tile number/Availability					Two Operating Rounds between Stock Rounds							
Yellow	1/2	2/2	3/3	4/7	5/1	7/7	8/15	9/11	55/1	56/1	57/1	58/4	
	69/2	201/3	202/3	401/2	402/1	404/3							
Green	12/2	16/3	17/1	18/1	19/3	20/3	23/11	24/11	25/4	26/4	27/4	28/3	
	29/3	30/1	31/1	87/1	88/2	204/2	205/2	206/-	207/2	208/2	405/4	406/4	
	408/1	410/2	411/2	412/2	413/2	414/1	415/1	416/1	417/1	418/2	419/2	420/2	
	421/2	422/1	423/2	424/1	425/-	426/1	427/-	429/1					

The EKT, ZKB, SPB and LRB coal companies can be exchanged for shares in the major companies before the operating round or the stock round.

With the next train on offer being the first '4', owners of the kk minors should say whether they will join the kk major company if Stephen decides to form it.







1856-M19

Are you ready for this one to end?
We've practised a few times.

OR16 - SR9

The BBG run in OR15 was 780 rather than the 560 I reported. I stuck to Lyndon's suggested route and didn't spot a much better alternative.

OR16	Pres	Lay	Run	Pay	Notes	Price	Credit	Trains
THB	WM	19:G14:2	690	Yes	-	175D▲	373	D
WGB	SC	45:G14:5	860	Yes	-	175A▲	21	D 5
BBG	LQ	9:K14:2	920	Yes	①	150B▲	62	D 5
TGB	SW	47:M8:4	300	Yes	-	150B▲	160	6
CGR	SC	41:B17:4	770	Yes	②	125A▲	381	D
CPR	TS	15:N3:2	310	Yes	-	65G▲	38	6

Notes: ① 40 to the bank for terrain costs
② 100 to the bank for a token in J15

With the CPR out of the yellow zone, Willem and Lyndon have to sell some shares.

Stock Round 9

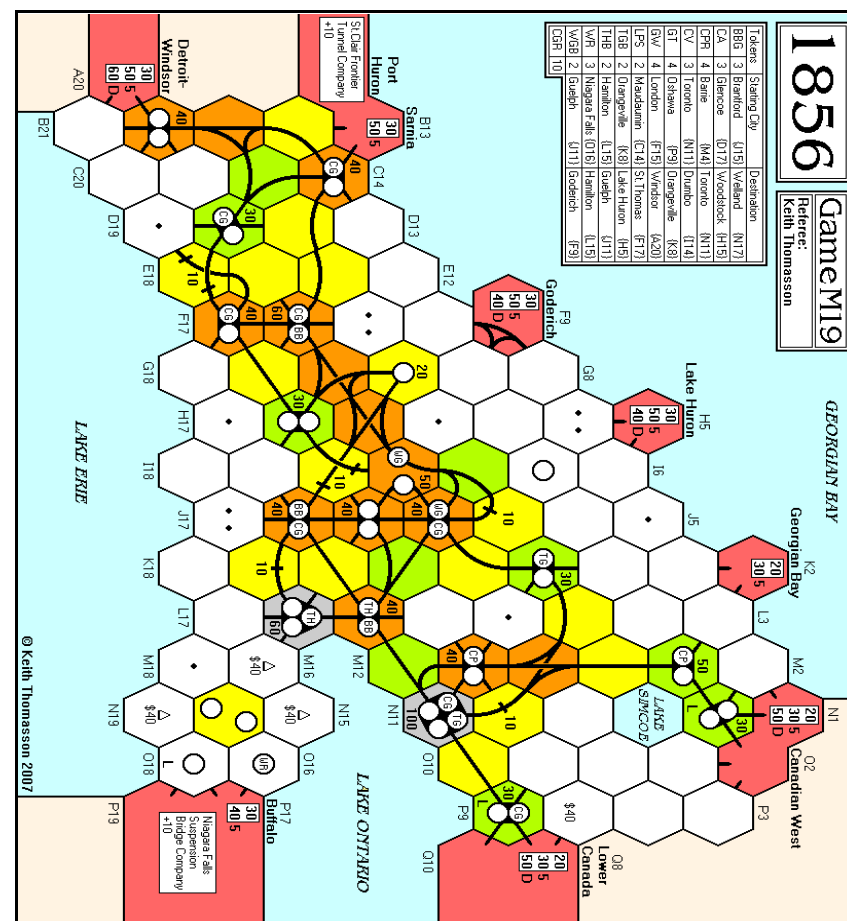
Willem	Tony	Lyndon	Simon	Stephen
- 3 TGB (→100E) + CGR pool	+ TGB new	- 1 CPR (→60H)	+ CGR pool	✗
✗	+ THB pool	✗	✗	✗
✗	+ CPR pool	✗	✗	✗
✗	+ TGB new	✗	✗	✗
✗	✗	Priority for SR10		

Cash Flow	b/f	OR16	SR9	c/f	Value	%	Certs
Stephen Webb	832	702	0	1,534	3,334	18.8▼	11
Willem Moene	1,294	824	325	2,443	4,273	24.1▼	10½
Tony Sait	300	155	-450	5	795	4.5▲	7½
Lyndon Gurr	2,088	1,038	65	3,191	5,516	31.1▲	11
Simon Cutforth	903	848	-125	1,626	3,806	21.5▲	11

Portfolio	BBG	CPR	TGB	THB	WGB	WR	CGR
Stephen Webb	4	-	6P	-	-	-	4
Willem Moene	-	2	-	6P	3	-	1
Tony Sait	-	6P	1	1	-	-	1
Lyndon Gurr	6P	-	-	2	1	-	6
Simon Cutforth	-	2	-	-	6P	-	8P

Bank (new)	-	-	-	-	-	10P	-
Price (par)	100	65	90	75	100	100	100
Bank (pool)	-	-	3	1	-	-	-
Price (pool)	175A	65G	100E	175D	175A	-	125A
Company credit	52	38	160	375	21	-	381
Tokens	-	3	-	-	-	3	2
Trains	D 5	6	6	D	D 5	-	D

Bank cash: 2,176	Certificate limit: 11	Trains: 1 x '5', Diesels
Current operating order:	THB, WGB, BBQ, CGR, TGB, CPR	

[illegible]

Orders required for the following rounds

By the early deadline

OR17, OR18, OR19



1856-Y19

The TGB does what nobody seems to have seen coming.

OR11

OR11	Pres	Lay	Run	Pay	Notes	Price	Credit	Trains
CV	SW	63:H15:1	370	Yes	①	100D	74	6
TGB	RT	8:I6:4	170	No	② ③	65E	84	D 5
CGR	RT	124:N11:1	410	Yes	-	90C	83	5 5
WGB	PB	59:I12:2	-	-	④	65C	0	6
BBG	SW	5:J15:1	-	-	⑤	65E	0	D
THB	MB	4:H11:2	-	-	⑥	55E	0	D

- Notes:
- ① 100 to the bank for a token in J13
 - ② Destination reached - 500 to the TGB from escrow
 - ③ 1,100 to the bank for a Diesel - '4' trains become obsolete
 - ④ 700 to the bank for a '6' train, mostly funded by 501 from Peter, requiring the sale of 3 CGR (▼100B) and 1 WGB (▼70B)
 - ⑤ 1,100 to the bank for a Diesel, partly funded by 350 from Stephen, requiring the sale of 1 BBG (▼65E) and 1 CV (▼100D)
 - ⑥ 1,100 to the bank for a Diesel, mostly funded by 840 from Martin, requiring the sale of 4 TGB (▼65E), 1 WGB (▼65C) and 3 CGR (▼90C)

Cash Flow	b/f	OR11	c/f	Value	%	Certs
Peter Berlin	45	7	52	557	16.8	5
Mike Head	27	82	109	524	15.8	3
Martin Butcher	90	-7	83	373	11.2	2
Rob Thomasson	48	123	171	1,101	33.2	8
Stephen Webb	22	15	37	762	23.0	7

Portfolio	BBG	CV	TGB	THB	WGB	CGR
Peter Berlin	-	-	-	-	5P	2
Mike Head	-	-	-	2P	-	4
Martin Butcher	-	-	-	-	-	2
Rob Thomasson	-	-	6P	-	-	6P
Stephen Webb	5P	4P	-	-	-	-

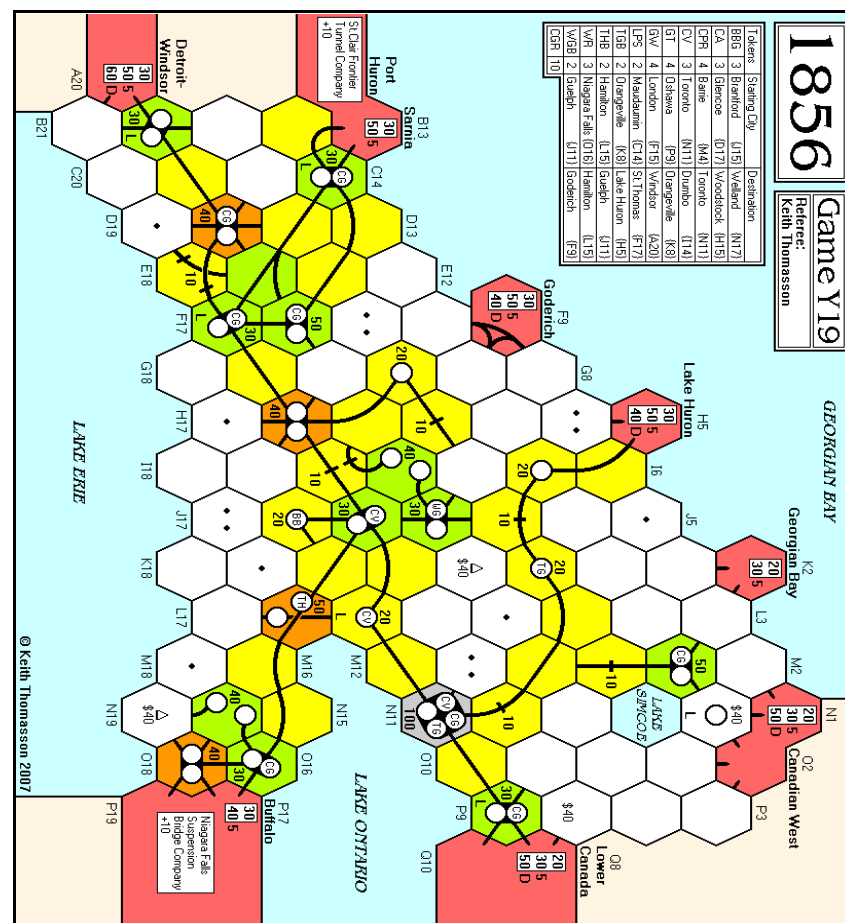
Bank (new)	4	3	-	4	3	-
Price (par)	75	100	100	100	100	100
Bank (pool)	1	3	4	3	2	6
Price (pool)	65E	100D	65E	55E	65C	90C
Company credit	0	74	84	0	0	83
Tokens	2	-	-	1	2	2
Trains	D	6	D 5	D	6	5.5

Bank cash: 11,307 Certificate limit: 10 Trains: Diesels
Current operating order: CV, CGR, BBG, TGB, WGB, THB

Rob's Diesel purchase with the TGB forced three people to buy new trains from the bank, and all had to sell shares to do so. Nobody covered this in their orders, so I tried to work out the minimum number of shares that needed to be sold to allow the necessary funds to be raised. Stephen found himself in an unusual position - his percentage value went up after being forced to help the BBG buy a Diesel.

Peter's orders ended after one round, 'Pause, breathless with excitement'. Still feel the same way?

Tiles	Tile number/Availability				Three Operating Rounds between Stock Rounds							
Yellow	1/1	2/-	3/3	4/1	5/-	6/-	7/6	8/6	9/5	55/1	56/-	57/3
	58/1	69/1										
Green	14/1	15/-	16/1	17/1	18/1	19/1	20/1	23/4	24/3	25/1	26/1	27/1
	28/1	29/1	59/-	120/1	121/-							
Brown	39/1	40/1	41/3	42/3	43/2	44/1	45/2	46/2	47/2	63/2	64/1	65/1
	66/1	67/1	68/-	122/1	125/3	126/1	127/1					
Grey	123/1	124/-										



Orders required for the following rounds

By the early deadline

OR12, OR13

Adjudication can pause between rounds if requested

1856-D22

One '2' train each.

OR1 - SR2

OR1	Pres	Lay	Run	Pay	Notes	Price	Credit	Loans	Trains
GT	RL	57:P9:2	-	-	①	75C	60	0	2
CPR	JS	6:N3:5	-	-	② ③ ①	65E	230	100	2
WR	MH	6:O16:3	-	-	② ①	60F	185	100	2
LPS	TR	57:C14:3	-	-	② ①	60F	185	100	2
GW	WM	5:F17:6	-	-	② ①	60F	250	100	2

Notes: ① 100 to the bank for a '2' train
 ② Government loan secured
 ③ 40 to the bank for terrain costs

Stock Round 2

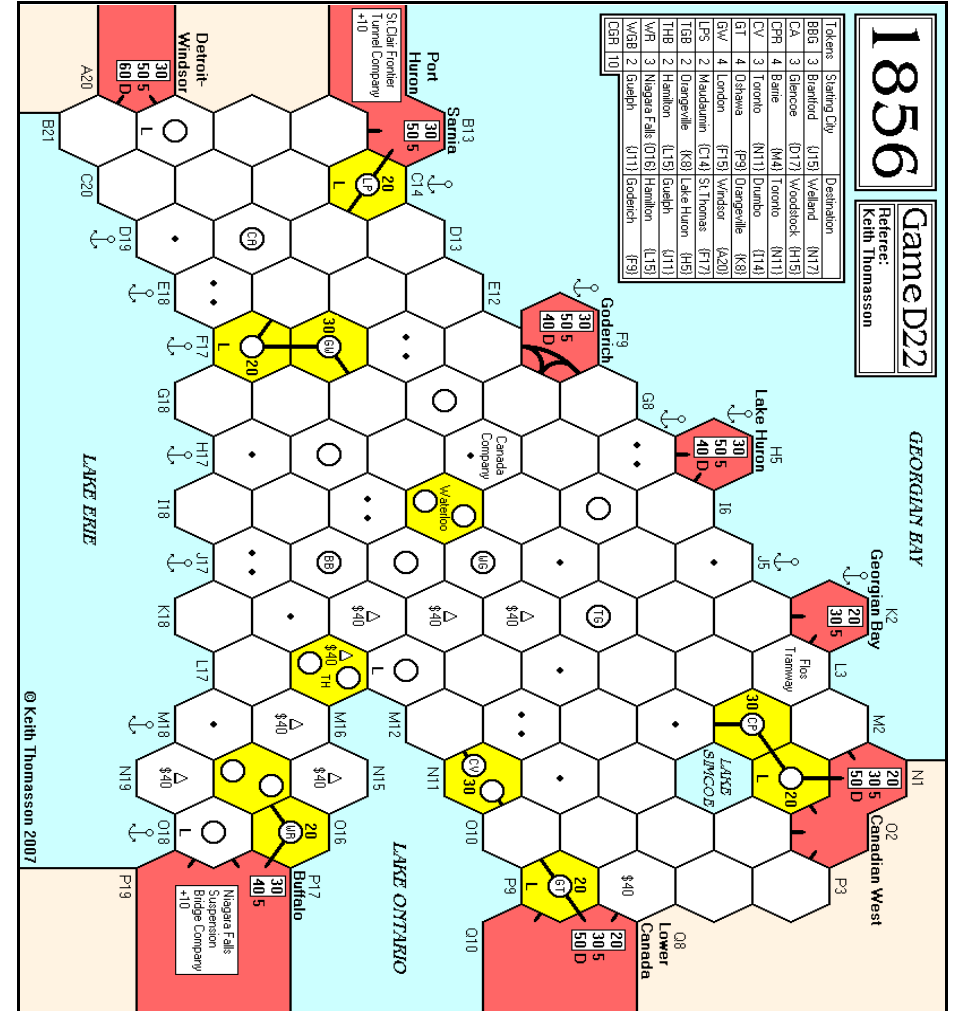
Mike	John	Richard	Tony	Willem
x	x	x	x	x
Priority for SR3				

Cash Flow	b/f	OR1	SR2	c/f	Value	%	Certs
Richard Lunn	0	25	0	25	295	20.1▲	3
Tony Robbins	0	20	0	20	300	20.4▲	3
Willem Moene	0	10	0	10	290	19.7▼	4
Mike Head	0	20	0	20	300	20.4▲	3
John Shelley	0	5	0	5	285	19.4▼	4

Portfolio	Privates	BBG	CA	CPR	CV	GT	GW	LPS	TGB	THB	WGB	WR
Richard Lunn	CC, GLSC	-	-	-	-	2P	-	-	-	-	-	-
Tony Robbins	SCFTC	-	-	-	-	-	-	3P	-	-	-	-
Willem Moene	WSR	-	-	-	-	-	4P	-	-	-	-	-
Mike Head	NFSBC	-	-	-	-	-	-	-	-	-	-	3P
John Shelley	FT	-	-	4P	-	-	-	-	-	-	-	-

Bank (new)	10P	10P	6	10P	8	6	7	10P	10P	7	10P
Price (par)			70		80	65	65			65	
Bank (pool)	-	-	-	-	-	-	-	-	-	-	-
Price (pool)			65E		75C	60F	60F			60F	
Company credit			230		60	250	185			185	
Tokens	3	3	3	3	3	3	1	2	2	1	3
Trains			2		2	2	2			2	
Bank cash: 11,010	Certificate limit: 13					Trains: 1 x '2', 5 x '3'...					
Current operating order:	GT, CPR, WR, LPS, GW										

Tiles	Tile number/Availability					One Operating Round between Stock Rounds						
Yellow	1/1	2/1	3/3	4/3	5/1	6/-	7/7	8/13	9/13	55/1	56/1	57/2
	58/3	69/1										



Orders required for the following rounds	By the early deadline
OR2, SR3	Adjudication can pause between rounds if requested



1856-M22

Nobody makes a bid more than 5 above face value.

PRIVATES

Stock Round 1 - Private Companies

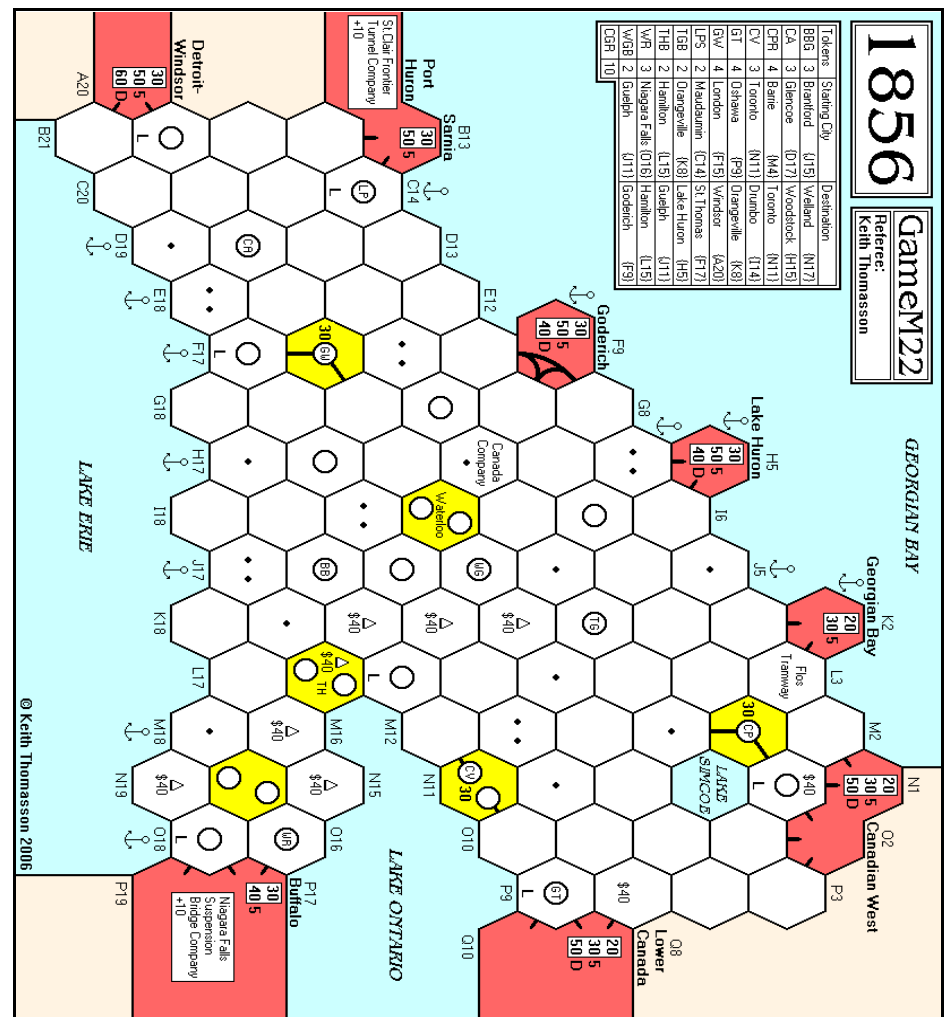
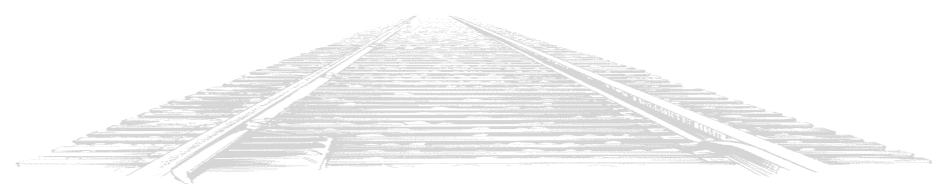
Mike	Bids 105 on the SCFTC
Lyndon	Buys the FT for 20
Tony	Bids 75 on the GLSC
Rob	Bids 105 on the NFSBC
Willem	Buys the WSR for 40
Mike	✗
Lyndon	Buys the CC for 50
	✱ Tony gets the GLSC for 75
	✱ Rob gets the NFSBC for 105
	✱ Mike gets the SCFTC for 105
	Priority for the remainder if the round lies with Tony

Cash Flow	b/f	Privates	c/f	Value	%	Certs
Mike Head	300	-105	195	295	19.9▼	1
Lyndon Gurr	300	-70	230	300	20.2▲	2
Tony Sait	300	-75	225	295	19.9▼	1
Rob Thomasson	300	-105	195	295	19.9▼	1
Willem Moene	300	-40	260	300	20.2▲	1

Portfolio	Privates	BBG	CA	CPR	CV	GT	GW	LPS	TGB	THB	WGB	WR
Mike Head	SCFTC	-	-	-	-	-	-	-	-	-	-	-
Lyndon Gurr	FT, CC	-	-	-	-	-	-	-	-	-	-	-
✱ Tony Sait	GLSC	-	-	-	-	-	-	-	-	-	-	-
Rob Thomasson	NFSBC	-	-	-	-	-	-	-	-	-	-	-
Willem Moene	WSR	-	-	-	-	-	-	-	-	-	-	-

Bank (new)	10P	10P	10P	10P	10P	10P	10P	10P	10P	10P	10P
Price (par)											
Bank (pool)	-	-	-	-	-	-	-	-	-	-	-
Price (pool)											
Company credit											
Tokens	3	3	4	3	4	4	2	2	2	2	3
Trains											
Bank cash: 10,895	Certificate limit: 13				Trains: 6 x '2', 5 x '3'...						

Tiles	Tile number/Availability										One Operating Round between Stock Rounds		
Yellow	1/1	2/1	3/3	4/3	5/2	6/2	7/7	8/13	9/13	55/1	56/1	57/3	
	58/3	69/1											



Orders required for the following round

By the early deadline

SR1 - public companies



1870-U19

See the top of the next page for some corrections.

OR14 - SR8

OR14	Pres	Lay	Run	Pay	Notes	Price	Credit	Trains
SSW	MB	-	-	370	Yes	275B	37	8
ATSF	LQ	2:A16:3	8:A18:3	370	Yes	① 250A	57	8
GMO	LQ	15:M14:6	-	320	Yes	140E	366	6
SP	LQ	28:L19:6	-	380	Yes	② 110B	348	10
MP	JS	141:M10:3	-	370	Yes	90E	310	8
TP	SW	43:I4:2	-	190	Yes	90B	57	6
IC	MH	20:H15:3	-	620	Yes	72F	128	12 6
FW	MB	15:M6:6	-	360	Yes	72D	0	10
MKT	SW	-	-	440	Half	60H	264	12
SLSF	LQ	23:J19:1	-	480	Yes	60F	0	12

Notes: ① 40 to the bank for terrain costs
② 40 to the bank for a token in B19

Stock Round 8

John	Mike	Martin	Lyndon	Stephen
✗	✗	+ IC new	GMO redeems from the pool	+ SP new
✗	✗	+ IC new	✗	+ SP new
✗	✗	+ SP new	✗	+ SP new
✗	✗	✗	✗	✗
Priority for SR9				

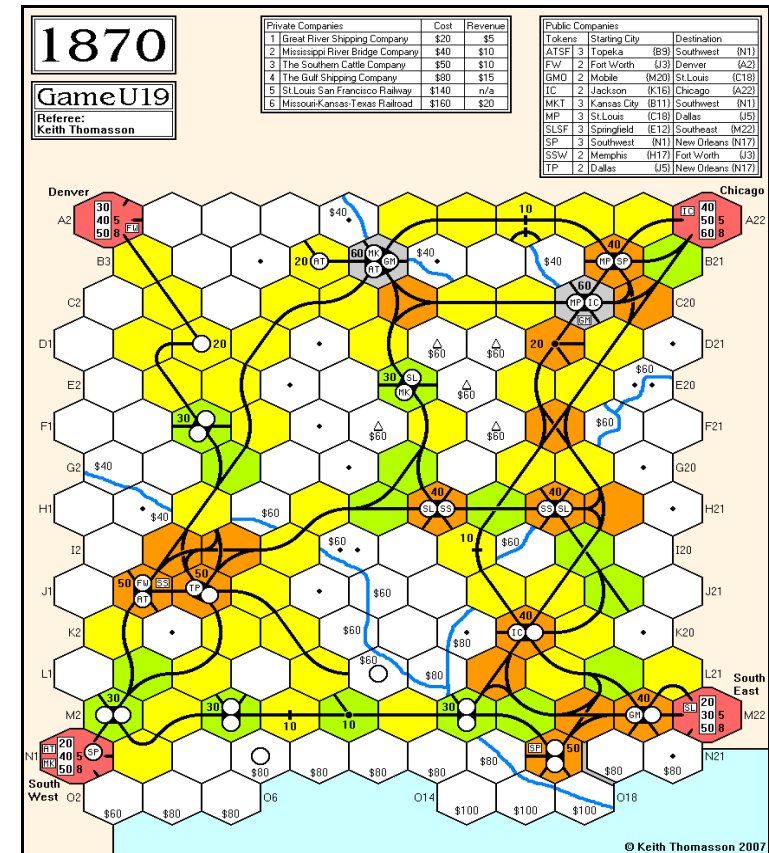
Cash Flow	b/f	OR14	SR8	c/f	Value	%	Certs
Lyndon Gurr	606	765	0	1,371	4,297	25.4	16
Stephen Webb	101	439	-270	270	2,002	11.8	17
John Shelley	684	463	0	1,147	3,541	20.9	17
Mike Hutton	792	620	0	1,412	3,300	19.5	16
Martin Butcher	844	508	-242	1,110	3,802	22.4	15

Portfolio	ATSF	FW	GMO	IC	MKT	MP	SLSF	SP	SSW	TP
Lyndon Gurr	5P	-	5P	-	-	-	4P	6P	-	-
Stephen Webb	-	3	2	1	5P	-	-	3	-	5P
John Shelley	1	1	1	1	1	6P	3	-	3	1
Mike Hutton	3	-	-	6P	1	4	2	-	-	1
Martin Butcher	-	6P	-	2	1	-	1	1	6P	-

Bank (new)	-	-	-	-	-	-	-	-	-	3
Price (par)	100	72	68	76	68	76	100	90	76	100
Bank (pool)	-	-	1	-	-	-	-	-	-	-
Price (pool)	250A	82C	140E	76E	64G	100D	64E	120A	300A	90B
Company credit	57	0	226	128	264	310	0	348	37	57
Redeemed shares	1	-	1	-	2	-	-	-	1	-
Tokens	-	1	-	-	1	1+D	-	2	-	2+D
Trains	8	10	6	12.6	12	8	12	10	8	6
Bank cash: 5,263	Certificate limit: 13								Trains: 12's	
Current operating order: SSW, ATSF, GMO, SP, MP, TP, FW, IC, MKT, SLSF										

The MKT laid 17:M16:1 in OR13, not 14:B9:1. I missed the fact that it could access the new track from the east. The share certificates did not consider that the SLSF was in the yellow zone.

Tiles	Tile number/Availability										Three Operating Rounds between Stock Rounds		
Yellow	1/1	2/-	3/3	4/5	5/1	6/2	7/5	8/7	9/7	55/1	56/1	57/5	
	58/3	69/1											
Green	14/1	15/2	16/2	17/1	18/2	19/2	20/-	23/2	24/1	25/1	26/2	27/2	
	28/1	29/2	141/1	142/2	143/1	144/1							
Brown	39/-	40/1	41/3	42/2	43/-	44/1	45/2	46/1	47/-	63/-	70/2	145/2	
	146/1	147/2	170/1							Grey	171/-	172/-	



Orders required for the following rounds

By the early deadline

OR15, OR16

Adjudication can pause between rounds if requested



1870-O20

The ATSF is floated to make a full house.

SR6

The type 14 tile reported as being laid in J3 really was, not in J5 as shown on the map.

Stock Round 6

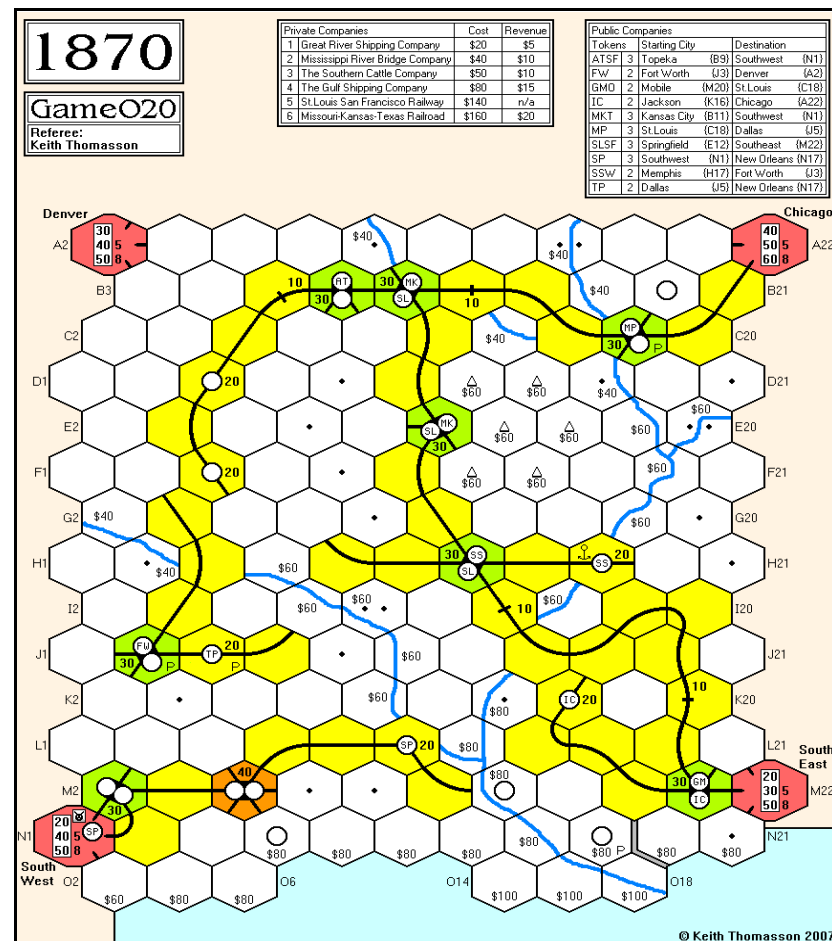
Simon	Don	Stephen	Willem	Roger
+ SP new - 1 SP {+}	+ ATSF new {floated}	+ SLSF new - 1 SLSF	Price protects 1 SLSF	+ GMO new - 1 GMO
Price protects 1 GMO	✗	+ SSW pool	✗	- 4 MKT {+82G} + SSW pool
+ SSW pool	✗	+ TP pool	✗	+ SSW new
+ TP pool	✗	✗	✗	+ SSW new
✗	✗	✗	✗	SSW redeems from Roger
✗	✗	✗	✗	+ MP new
✗	✗	✗	✗	MP redeems from the pool
✗	✗	✗	✗	+ TP pool
✗	✗	✗	✗	+ SP pool
✗	✗	✗	✗	+ FW new
✗	✗	✗	✗	✗
Priority for SR7				

Cash Flow	b/f	SR6	c/f	Value	%	Certs
Simon Cutforth	188	-188	0	1,216	19.5	12
Don Smith	125	-82	43	945	15.1	9
Stephen Webb	450	-136	314	1,702	27.2	13
Willem Moene	132	-100	32	1,342	21.5	11
Roger Krueger	155	-136	19	1,041	16.7	10

Portfolio	ATSF	FW	GMO	IC	MKT	MP	SLSF	SP	SSW	TP
Simon Cutforth	-	-	6P	6P	-	-	-	-	1	1
Don Smith	6P	-	-	-	5P	-	-	-	-	-
Stephen Webb	-	-	1	-	1	1	2	7P	1	1
Willem Moene	-	6P	-	-	-	-	7P	-	-	-
Roger Krueger	-	1	-	-	-	3P	-	1	5P	3P

Bank (new)	4	3	3	4	-	2	-	-	2	4
Price (par)	82	90	82	90	76	100	100	72	90	100
Bank (pool)	-	-	-	-	4	2	-	1	-	1
Price (pool)	82C	90B	90D	90B	82G	90D	110D	110F	72E	64E
Company credit	820	576	56	592	315	2	210	71	1,391	111
Redeemed shares	-	-	-	-	-	2	1	1	1	-
Tokens	3+D	1+D	1+D	D	1+D	2+D	D	1+D	D	1+D
Trains	-	4	4	3	4	3	3	4	3	3
Bank cash: 7,448	Certificate limit: 13					Trains: 3 x '5', 3 x '6'...				
Current operating order:	SP, SLSF, GMO, MP, FW, IC, MKT, ATSF, SSW, TP									

Tile	Tile number/Availability							Three Operating Rounds between Stock Rounds						
Yellow	1/1	2/1	3/3	4/4	5/1	6/1	7/7	8/5	9/15	55/1	56/1	57/1		
	58/3	69/1												
Green	14/-	15/-	16/2	17/2	18/2	19/2	20/2	23/4	24/4	25/3	26/2	27/2		
	28/2	29/2	141/2	142/2	143/1	144/1								
Brown	39/1	40/2	41/3	42/3	43/2	44/1	45/2	46/2	47/2	63/4	70/2	145/2		
	146/2	147/2	170/4											



Orders required for the following round

By the early deadline

OR9, OR10

Adjudication can pause between rounds if requested



1895-L20

The NS buys the second '12H' train.

OR10 - SR7

My selective eyes missed a train-buying order for the NS. It bought the second '10H' train, forcing Tim to give up another 100 RM for a '12H' train, which made the '6H' trains obsolete.

OR10	Pres	Lays	Run	Pay	Mines	Notes	Price	Credit	Trains
SD	RK	125:D18:1	-	220	Yes	100	-	160C▲	116 10H 8H
OME	MB	849:C11:1	-	-	-	①	115D▼	0	12
OB	RK	8:E7:2	9:G5:2	190	Yes	30	②	120E▲	263 8H
STA	TF	889:F12:4	-	200	Yes	-	-	70F▲	20 12H
NS	MB	-	-	150	Yes	30	-	70E▲	31 10H

Notes: ① 600 to the bank for a '12H' train, partly funded by 115 from Martin, requiring the sale of 2 NS (▼60E)
② 40 to the bank for terrain costs

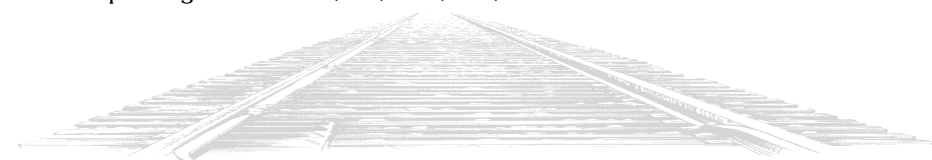
Stock Round 7

Roger	Tim	Martin
+ OME pool	+ STA pool	+ NS pool
+ OME pool	✗	✗
- 1 OME (▼105E)	✗	✗
- 1 OME (▼95F)	✗	✗
+ SD pool (+20%)	✗	✗
+ OB pool	✗	✗
✗	Priority for SR12	

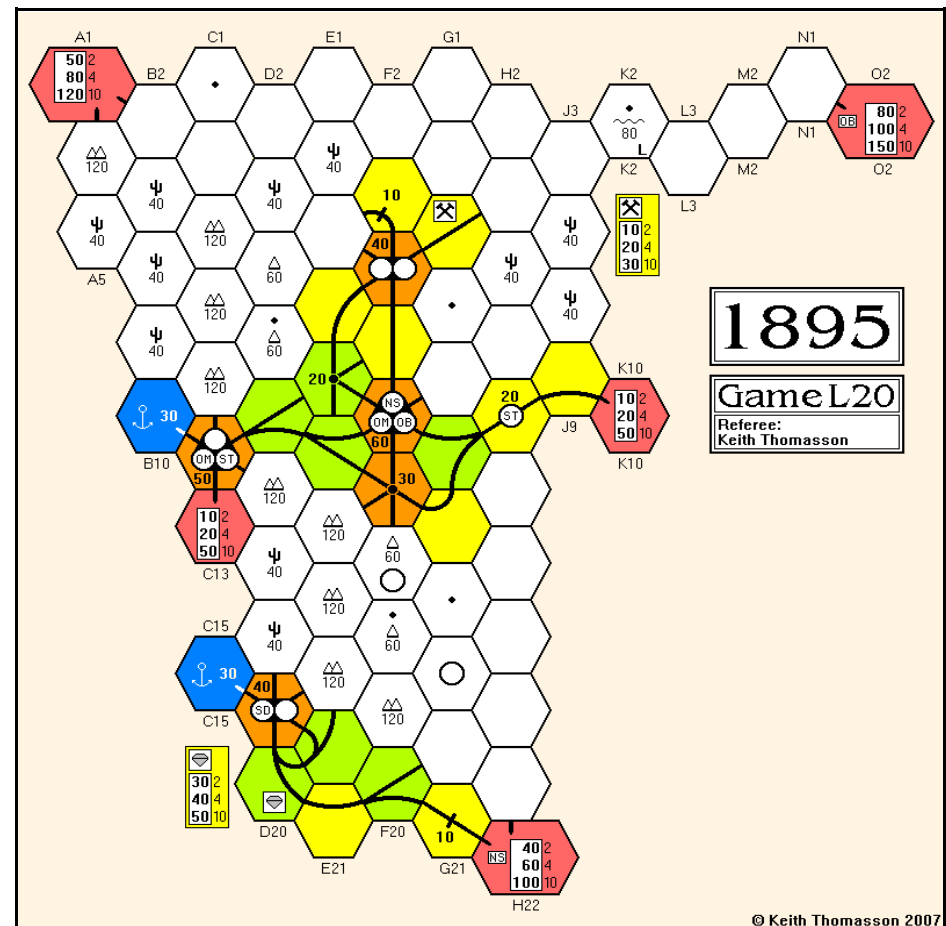
Cash Flow	b/f	OR10	SR7	c/f	Value	%	Certs
Roger Krueger	269	227	-322	174	2,084	46.4▲	12
Tim Franklin	18	206	-84	140	1,210	27.0▲	10
Martin Butcher	26	145	-84	87	1,192	26.6▼	12

Portfolio	PC/Obliq	STA	OME	SD	OB	NS
Roger Krueger	OB	-	-	7P	6P	-
Tim Franklin	-	8P	-	3	-	-
Martin Butcher	-	-	5P	-	-	9P

Bank (new)	1	-	-	2	-
Bank (pool)	1	5	-	1	1
Price	70F	95F	170B	120E	70E
Company credit	20	0	116	263	31
Tokens	2	1	2	1	1
Trains	12H	12H	10H 8H	8H	10H
Bank cash: 5,697	Certificate limit: 13				Trains: 5 x '16H'
Current operating order:	SD, OB, OME, STA, NS				



Tiles	Tile number/Availability				Three Operating Rounds between Stock Rounds							
Yellow	3/1	4/1	7/4	8/8	9/10	57/2	58/2	814/1	815/1			
Green	14/2	15/2	16/1	17/1	18/1	19/1	20/1	23/-	24/1	25/2	26/2	27/2
	28/2	29/-	38/1	887/-	888/1							
Brown	39/1	40/1	41/1	42/1	43/1	44/1	45/1	46/1	47/1	70/1	125/1	849/-
	850/-	889/-										



© Keith Thomasson 2007

Orders required for the following rounds

By the early deadline

OR11, OR12

Adjudication can pause between rounds if requested





1899-Z21

The XzS doesn't get to lay a tile.

OR2 - SR3

OR2	Pres	Lay	Run	Pay	Mail	Notes	Price	Credit	Trains
XzS	LQ	-	-	-	-	① ②	90A	0	3 2 2 2
Tt	DS	9:H9:3	90	Yes	30	-	100A	690	2 2
FsR	AH	9:B11:2	60	Yes	30	③ ④	82C	556	3.2

- Notes: ① 420 to the bank for three '2' trains and a '3' train - XzS private closes
 ② 540 to Lyndon for the VPR and ASC privates
 ③ 120 to the bank for terrain costs
 ④ 180 to the bank for a '3' train

Stock Round 3

John	Don	Alan	Lyndon
- 4 Tt - 2 XzS + NRC/Pres (100)	+ XzS pool	+ Tt pool	+ CSb/Pres (67)
+ NRC new	x	x	+ XzS pool
+ NRC new	x	x	+ CSb new
+ NRC new	x	x	+ CSb new
+ NRC new (floated)	x	x	+ CSb new
x	x	x	+ CSb new
x	x	x	+ XzS new
x	x	x	x
Priority for SR4			

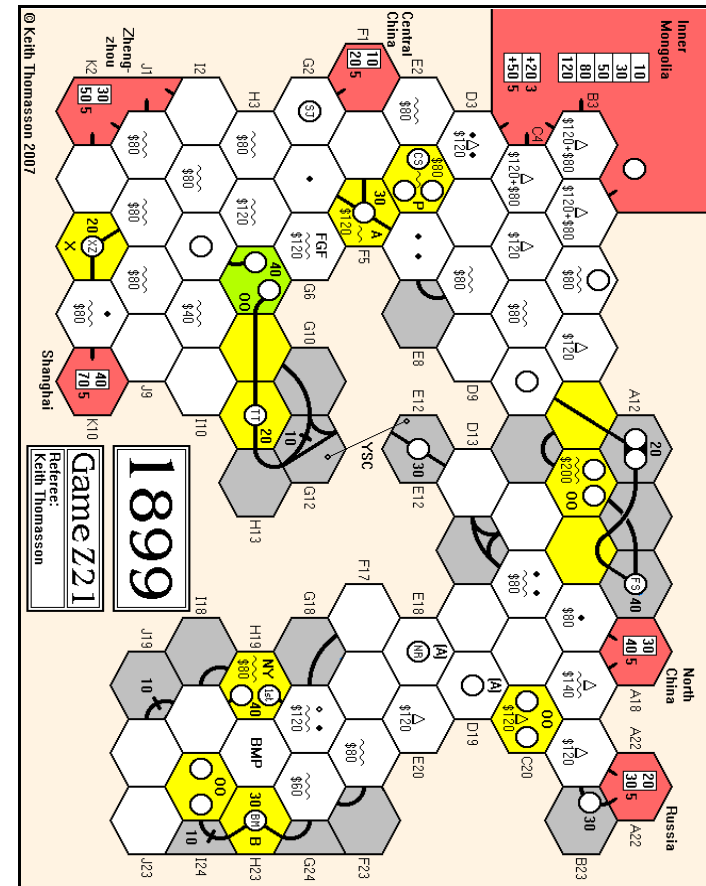
Cash Flow	b/f	OR2	SR3	c/f	Value	%	Certs
Alan Harvey	45	41	-71	15	598	20.8	7
Lyndon Gurr	52	585	-593	59	917	31.8	10
John Shelley	52	76	-20	108	748	26.0	6
Don Smith	53	69	-76	46	618	21.4	7

Portfolio	Privates	1st	B&M	CSb	FsR	NRC	Sjz	Tt	XzS
Alan Harvey	BMP	-	-	-	6P	-	-	1	-
Lyndon Gurr	-	-	-	6P	-	-	-	-	6P
John Shelley	FGF	-	-	-	-	6P	-	-	-
Don Smith	YSC	-	-	-	-	-	-	6P	1

Bank (new)	10P	10P	4	3	3	10P	-	3
Price (new)			67	90	100		82	100
Bank (pool)	-	-	-	1	-	-	3	-
Price (pool)			67F	82C	100A		71E	76C
Company credit			670	556	1,000		690	40
Tokens	3	3	3	1	4	4	3	1
Trains			-	2	-		2.2	3222
Bank cash: 13.816	Certificate limit: 16				Trains: 3 x '3' 4 x '4'			
Current operating order	NRC, FsR, XzS, Tt, CSb							

Tiles	Tile number/Availability					Two Operating Rounds between Stock Rounds							
Yellow	1/1	2/1	3/2	4/3	7/5	8/11	9/9	55/1	56/1	57/4	58/3	69/1	
Green	14/3	15/4	16/1	18/1	19/1	20/1	23/3	24/3	25/1	26/1	27/1	28/1	
	29/1	54/1	59/2	981/1	982/1	991/1	992/1	993/1	994/1	995/1			

Lyndon will have expected to lay a tile with the XzS, but has been caught out by the XzS private company. He wanted to lay the first tile for the XzS in the hex which is the base for the XzS private - but that did not close until the XzS bought its first train, so that hex was not free when laying the tile. I wondered whether any of the previous games had been illegal in this respect, but found that all in cases bar one the XzS built to the east as its first tile lay. In the other case, the XzS never operated.



Orders required for the following rounds	By the early deadline
OR3, OR4	Adjudication can pause between rounds if requested



18KAAS-O19

It looks like there's just one more round to go.

OR15 - OR16

I stand corrected on my B&M run correction. The tokens in G9 prevented the latter part of the run I reported from taking place, so the OR13 run drops to \$380.

OR15	Pres	Lay	Run	Pay	Notes	Price	Credit	Trains
B&O	MB	8:J14:1	350	Yes	-	250A	130	6
B&M	WM	-	370	Yes	-	200B	0	D
CPR	LG	-	320	Yes	-	170C	0	6
C&O	TS	42:K15:3	230	No	-	126A	230	D
PRR	AH	8:H16:4	310	Yes	①	120D	3	5
NYNH	WM	-	230	Yes	-	110D	246	5
Erie	AH	45:G15:1	190	Yes	-	82C	0	5
NYC	LG	-	-	-	-	10H	0	-

Notes: ① 80 to the bank for terrain costs

OR16	Pres	Lay	Run	Pay	Notes	Price	Credit	Trains
B&O	MB	9:J16:3	550	Yes	①	275A	50	6
B&M	WM	-	560	Yes	-	220B	-	D
CPR	LG	-	350	Yes	-	185C	-	6
C&O	TS	59:K13:1	230	Yes	②	142A	190	D
PRR	AH	9:I17:1	460	Yes	-	130D	3	5
NYNH	WM	-	350	Yes	-	120D	246	5
Erie	AH	24:H16:4	300	Yes	-	90C	0	5
NYC	LG	-	-	-	-	10H	0	-

Notes: ① 80 to the bank for terrain costs
② 40 to the bank for a token in K17

Cash Flow	b/f	OR15	OR16	c/f	Value	%	Certs
Willem Moene	853	408	610	1,871	4,116	19.1	13
Martin Butcher	1,645	302	571	2,518	5,413	25.2	13/14
Tony Sait	598	251	484	1,333	3,503	16.3	12
Lyndon Gurr	1,187	385	503	2,075	4,200	19.5	12/13
Alan Harvey	1,003	424	632	2,059	4,274	19.9	13

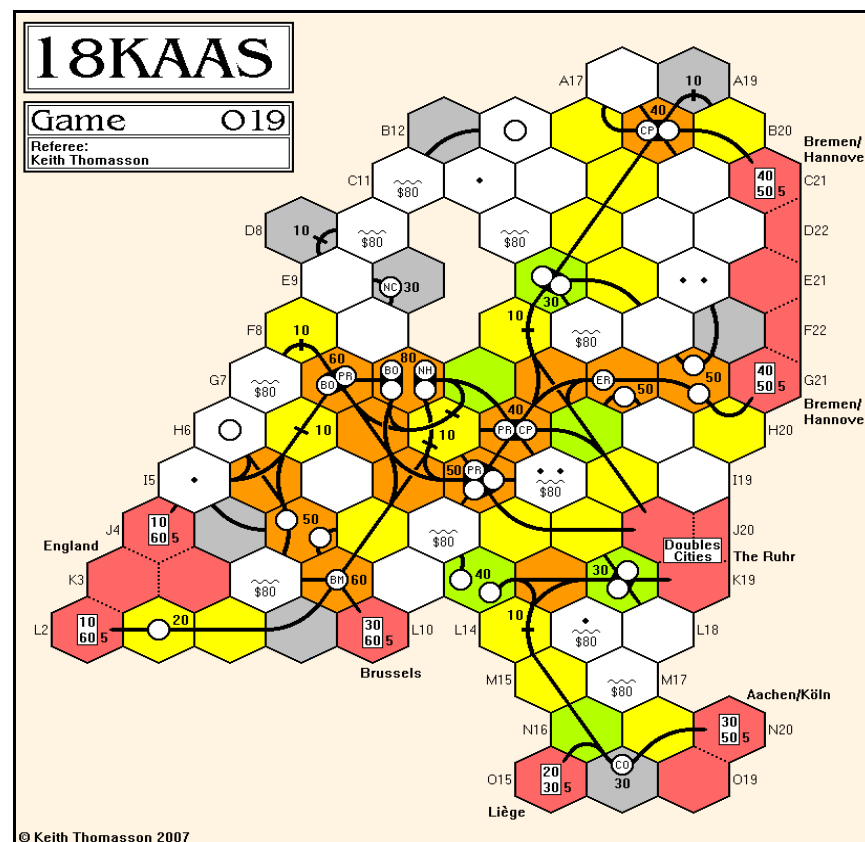
Portfolio	B&M	B&O	C&O	CPR	Erie	NYC	NYNH	PRR
Willem Moene	5P	-	-	1	4	-	5P	-
* Martin Butcher	1	6P	5	1	-	1	1	-
Tony Sait	3	1	5P	1	1	-	1	1
Lyndon Gurr	-	1	-	6P	1	2P	2	3
Alan Harvey	1	2	-	1	4P	-	1	6P

Bank (new)	-	-	-	-	-	3	-	-
Price (new)	90	100	90	76	100	76	67	71
Bank (pool)	-	-	-	-	-	4	-	-
Price (pool)	220B	275A	142A	185C	90C	10H	120D	130D
Company credit	0	50	190	0	0	0	246	3
Tokens	2	2	1	2	2	4	1	1
Trains	D	6	D	6	5	-	5	5

Bank cash: 1,655 Certificate limit: 15 Trains: Diesels
Current operating order: B&O, B&M, CPR, C&O, PRR, NYNH, Erie, NYC

Tiles	Tile number/Availability				Three Operating Round between Stock Rounds								
Yellow	1/1	2/1	3/1	4/-	7/3	8/4	9/4	55/1	56/-	57/3	58/-	69/1	
Green	14/2	15/1	16/1	18/1	19/1	20/1	23/3	24/2	25/1	26/1	27/-	28/-	
	29/1	53/1	53+/1	54/1	59/1								
Brown	39/1	40/1	41/2	42/1	43/1	44/1	45/-	46/1	47/1	61/-	61+/-	62/-	
	63/1	63+/-	64/-	65/-	66/-	67/1	68/1	70/1					

A number of runs used the Ruhr off-board area to double the value of the cities in OR16. Note that to do this, one of the stops on your route has to be the off-board area. Alan believes the PRR credit should be more, but checking this involves checking back four Ors, I'm going to give it a miss. As the game will end after the next round unless everyone retains, I doubt that it will make any difference.



Orders required for the following round

By the early deadline

OR17



6 NIMMT! 12

No positions changed throughout the round.

ROUND 7

Hand 1 (1-104)

68	90	91	
52	86	88	
49	85	82	59
47	71	81	58
34	50	77	55
1/5	2/10	3/9	4/9

Hand 2 (1-104)

	77	59	
	70	55	
104	62	50	
100	61	35	
99	60	17	51
1/9	2/9	3/14	4/1

Michael (9) takes row 4 for 1 pt, Steve (18), Mick (23), Tim (41), Jim (51), Sharon (55) takes row 4 for 5 pts, Colin (58), John (59).

Colin (8) takes row 4 for 2 pts, Tim (15), Steve (19), John (21), Sharon (37), Jim (51) takes row 4 for 6 pts, Mick (100), Michael (104).

Hand 3 (1-84)

57	72		84
54	68	51	83
42	66	49	80
41	65	21	79
40	58	19	75
1/7	2/10	3/4	4/8

Hand 4 (1-84)

			81
43			80
42			79
25	68		78
16	63	35	77
1/5	2/2	3/2	4/11

Jim (19) takes row 3 for 1 pt, Sharon (21), Tim (49), Michael (51), Mick (57), Steve (66), Colin (68), John (72).

Tim (2) takes row 3 for 1 pt, Mick (13), Colin (17), Steve (22), Sharon (34), Jim (35) takes row 3 for 9 pts, John (63) takes row 2 for 13 pts, Michael (68).

Player	Hand 1	Hand 2	Hand 3	Hand 4	Overall Score
Michael Graystone	1	1	0	5	7
Mick Haytack	0	10	0	3	13
Tim Franklin	5	5	0	6	16
John Colledge	0	0	8	22	30
Jim Reader	8	24	2	14	48
Sharon Khan	27	9	15	0	51
Steve Ham	0	13	22	20	55
Colin Sharpe	24	7	22	5	58

Sharon, you ordered card 12 for hand 4, but that had already been played, so the 34 was a random pick for you. It turned out to be a safe one.

A couple of other orders listed single-digit cards that you never held, so I guessed which cards you intended to play. Odd to get the same slip from more than one source.

Orders required

Round eight - cards for each hand



ACQUIRE 46

Two mergers, and two relaunched chains.

ROUND 8

John 6-G Buys 3 American @ £400.
 Lyndon 5-C Luxor takes over Continental, bonuses for Lyndon (£5,000) and Bob (£2,500), Lyndon retains 6, Bob retains 4. Buys 3 American @ £400.
 Tony 11-B Buys 3 Imperial @ £800.
 Bob 3-D Forms Continental, one free share. Buys 3 Continental @ £400.
 Willem 10-F Festival takes over Imperial, bonuses for Willem (£6,000) and Tony (£6,000), Willem retains 6, Tony swaps 6 for 3, Bob sells 4 for £3,200. Buys 3 Luxor @ £600.
 John 1-F Forms Imperial, one free share. Buys 1 Imperial @ £500.

1-A		3-A	4-A		6-A	L	8-A	F	F	F	12-A
	2-B	L	L		5-B	L	8-B	F	10-B	F	12-B
1-C		3-C	L	L	L	L	8-C	F	F	F	F
1-D	2-D	C		4-D	5-D	6-D	7-D	A	9-D	F	12-D
I	2-E	C		4-E	5-E	6-E	7-E	A	9-E	F	11-E
I	2-F	3-F		5-F	W	7-F	A	9-F	F	F	12-F
I	2-G		4-G	W	W	W	8-G	9-G	10-G	F	F
1-H	2-H	3-H		5-H	W	7-H	8-H	9-H	F	F	F
1-I	T	T		4-I	W	W	7-I	8-I	9-I	10-I	11-I
											12-I

	Lux	Tow	Ame	Fes	Wor	Con	Imp	Cash	Value
Bob Coull	1	-	1	8	-	8	-	£4,500	£27,100
Willem Moene	9	9	6	-	-	-	6	£4,500	£31,600
John Marsden	9	1	3	-	8	-	2	£300	£28,700
Lyndon Gurr	-	12	3	2	3	6	-	£3,900	£22,100
Tony Wilcock	-	3	-	6	-	-	-	£10,100	£19,500

Bank Stock	6	-	12	9	14	11	17
Chain Size	9	2	3	19	7	2	3
Chain Value	600	200	400	800	700	400	500

Playing sequence

Lyndon, Tony, Bob, Willem, John, Lyndon again



ACQUIRE 47

Three new chains.

ROUND 2

John 11-A Forms Imperial, one free share. Buys 3 Luxor @ £200.
 Colin 4-A Forms American, one free share. Buys 3 American @ £300.
 Simon 1-D Buys 3 Continental @ £600.
 Willem 2-H Forms Festival, one free share. Buys 3 Luxor @ £200.
 Michael 9-A Buys 3 Luxor @ £200.
 John 7-I Buys 1 Luxor @ £200, 2 Imperial @ £500.

1-A	2-A	3-A	A	5-A	6-A	7-A	8-A	I	I	I	12-A
1-B	2-B	3-B	A	5-B	6-B	7-B	8-B	9-B	10-B	11-B	12-B
1-C	2-C	3-C	4-C	5-C	6-C	7-C	8-C	9-C	10-C	L	L
	2-D	3-D	4-D	5-D	6-D	7-D	8-D	9-D	10-D	11-D	12-D
1-E	2-E	3-E	4-E	5-E	6-E	7-E	8-E	9-E	10-E	11-E	12-E
1-F		3-F	4-F	5-F	C	7-F	8-F	9-F	10-F	11-F	12-F
1-G	2-G	3-G	4-G	5-G	C	C	8-G	9-G	10-G	11-G	12-G
F	F	3-H	4-H	5-H	C	7-H	8-H		10-H	11-H	12-H
1-I	2-I	3-I	4-I	5-I	6-I		8-I	9-I	10-I	11-I	12-I

	Lux	Tow	Ame	Fes	Wor	Con	Imp	Cash	Value
Michael Graystone	7	-	-	-	-	-	-	£4,800	£8,200
John Colledge	4	-	-	-	-	-	3	£4,200	£15,000
Colin Sharpe	-	-	4	-	-	-	-	£5,100	£10,800
Simon Brooks	-	-	-	-	-	3	-	£4,200	£12,000
Willem Moene	3	-	-	1	-	1	-	£5,400	£14,400
Bank Stock	11	25	21	24	25	21	22		
Chain Size	2	-	2	2	-	4	3		
Chain Value	200	-	300	300	-	600	500		

Playing sequence

Colin, Simon, Willem, Michael, John, Colin again



ACQUIRE 48 {SP}

Michael is the only one to call upon a special power.

ROUND 1

Richard 5-C No purchases.
 Michael {Uses 'Take 5 Tiles' Power}
 8-C Forms Luxor, one free share. Buys 3 Luxor @ £200.
 John 10-A No purchases.
 Colin 8-D Buys 3 Luxor @ £300.
 Richard 5-D Forms Tower, one free share. Buys 3 Tower @ £200.

1-A	2-A	3-A	4-A	5-A	6-A	7-A	8-A	9-A		11-A	12-A
1-B	2-B	3-B	4-B	5-B	6-B	7-B	8-B	9-B	10-B	11-B	12-B
1-C	2-C	3-C	4-C	T	6-C	7-C	L	L	10-C	11-C	12-C
1-D	2-D	3-D	4-D	T	6-D	7-D	L		9-D	10-D	11-D
1-E	2-E	3-E	4-E	5-E	6-E	7-E	8-E	9-E	10-E	11-E	12-E
1-F	2-F	3-F	4-F	5-F	6-F	7-F	8-F	9-F	10-F	11-F	12-F
1-G	2-G	3-G	4-G	5-G	6-G	7-G	8-G	9-G		11-G	12-G
1-H	2-H	3-H	4-H	5-H	6-H	7-H	8-H	9-H	10-H	11-H	12-H
1-I	2-I		4-I	5-I	6-I	7-I	8-I		10-I	11-I	12-I

	Lux	Tow	Ame	Fes	Wor	Con	Imp	Cash	Value
Richard Lunn	-	4	-	-	-	-	-	£5,400	£9,200
Michael Graystone	4	-	-	-	-	-	-	£5,400	£9,600
John Colledge	-	-	-	-	-	-	-	£6,000	£6,000
Colin Sharpe	3	-	-	-	-	-	-	£5,100	£7,500
Bank Stock	18	21	25	25	25	25	25		
Chain Size	3	2	-	-	-	-	-		
Chain Value	300	200	-	-	-	-	-		

Powers used: Richard: None Michael: T5 John: None Colin: None

Playing sequence

Michael, John, Colin, Richard, Michael again





BREAKING AWAY 16

Well start scoring the second sprint next time.

ROUND 8

Pos	Riders	New
1st	Thomas (20 pts)	
70	Gordon	3
69	James	4
68	-	
61	-	
60	Latex Former Blinky Jupiter	3
59	Coagulant Robin Hood Blitzen	7
58	Pinky Nimrod Donner	10
57	Inky ◇ Dixon ◇ Oven	13
56	Odysseus William Tell	16
55	-	
54	Henry Pluto	3
53	Mars Clyde	5
52	Earth Rudolph	7

Simon Brooks (6) <i>Ditchling Beacon Bykers</i>	
A Rudolph (6)	3 3 7 15
B Donner	10 15 16
C Blitzen	5 7 15
D Dixen	3 5 13
Tim Franklin <i>Ghost Riders</i>	
A Inky	3 13 15
B Pinky	3 4 10
C Blinky	3 3 9
D Clyde	1 5 18
Steve Ham (4) <i>The Toxophilites</i>	
A Robin Hood	7 11 12 12
B Odysseus (1)	3 12 16
C Nimrod (3)	7 9 10
D William Tell	5 14 16
Sharon Khan (44) <i>Thomas the Tank Engine</i>	
A Thomas (40)	First
B Henry (4)	3 6 8
C James	3 4 8
D Gordon	3 8 15
Kevin Lee (13) <i>The Planets</i>	
A Earth (8)	3 3 7 8
B Mars	4 5 12
C Jupiter	3 3 5
D Pluto (5)	3 5 12
Jim Reader (2) <i>Latex Dipping</i>	
A Coagulant (2)	3 5 5 7
B Latex	3 6 8
C Former	3 3 7
D Oven	3 5 13



Two of Thomas' friends put on a head of steam and move to the front of the race.

Further back, the promise of high replacement cards vanishes when a gap appears on row 55.

Orders required

Cards for round nine



BREAKING AWAY 17

Breaking away once more, this time under the revised rules.

NEW GAME

The team captains for the latest game are:

Kevin Lee	149 Ludlow Road, Woolston, Southampton, SO19 2ER
Richard Lunn	56 Linwood Grove, Leighton Buzzard, Beds, LU7 4RP
Jim Reader	55A Yamate-Cho, Naka-ku, Yokohama 231-0862, Japan
Joakim Spångberg	Riddaregatan 28, SE-352 36 VÄXJÖ, Sweden
Allan Stagg	32 Chepstow Drive, Bletchley, Milton Keynes, Bucks, MK3 5NB
Roger Trethewey	Sea Pines, Hesketh Road, Torquay, Devon, TQ1 2LN

To get started you need to select the card values for your team of four riders. These are the options you get.

Rider	Number of cards	Card Values Allowed	To total
A	3 or 4	1 to 15	30
B	3	1 to 15	25
C	3	1 to 15	20
D	3	1 to 15	16

We'll be playing under the revised rules, version 2.3 You've all played games under these rules before, but if you need a reminder you can pull them off the web site (www.fwtwr.com).

If any of the totals are out, I shall take the rider's highest card (or one of them if there are two or more the same) and increase or decrease its value until the right total is reached.

Names are required for teams and riders.

Set up

Team and riders names, and card values for each rider



BUS BOSS 293-NIT

The central motorway wins out.

GAME OVER

1st	Jim Reader	BUM	370
2nd	Colin Sharpe	COLIN	331
3rd	Steve Ham	ARMANI	319
4th	Martin Butcher	MBB	318
5th	Don Shailer	DIGBY	183

Jim Reader (BUM, 1st): Looking at the map, I'm surprised this win was so comfortable as the red line (MBB) looks really strong. However, I think I gained a lot of points in the early race stages with my connection to Siena for Southern Italy and this gave me a cushion for the rest of the game. Thanks to Keith for running the game and to all my opponents for a good game (and not winning).

Steve Ham, ARMANI, 3rd: Congratulations to Jim on a comprehensive win. It seems as though the routes down the central axis paid off though I did think that at the end of round one my routes to the East would provide a useful advantage. I guess I should have done better but I decided then to build south and west and so lost the initial advantage. I also built too late to France and the south, giving others to opportunity for some easy points. Thanks to Keith for running this game, it's a nice map.

Martin Butcher (MBB, 4th): Well despite getting some extremely friendly routes in the last round I still finished a lowly fourth. Congratulations to Jim for a comfortable win and to Keith for running the game.

Martin's route looks as if it covers everything, but at the cost of going around the central area of the map, which affected his ability to compete on distance during the game. Those that cut through the middle couldn't reach all the edges, but could move quickly when they needed to.



BUS BOSS 300-KYR

Lovely place names.

ROUND 2

Kyrzygia
Buses Running On Own Kinetic Servomechanism (BROOKS) (Simon Brooks, Orange)
Kok-Yangak - Dzhalal-Abad, Kazarman - Ugyat - Min-Kush 88 - 12 76

Highland and Lowlands Lines (HILLS) (Jim Reader, Yellow)
Osh - Kyzyl Kiya - Khaydarkan 88 - 11 77

Small Mountainous Asian Republic Travel (SMART) (Bob Coull, Black)
K  k-Art - Uzgen 88 - 9 79

Graystone Runs Ugly Brown Buses Yet-again (GRUBBY) (Michael Graystone, Brown)
Osh - Dzhalal-Abad - Tash-Kumyr 88 - 12 76

Robertson's Routemasters (RR) (Simon Robertson, Blue)
Min-Kush - Tunuk, Min-Kush - Kochkorka 88 - 12 76

Routes
Buy in the order Jim, Bob, Michael, Simon R, Simon B



BUS BOSS 297-VSW

BROOKS has the best round.

ROUND 8

When you write out your orders, please include the run numbers against the runs you are entering.

The Valleys of South Wales

Round 8 Runs		BRK	SWALK	PEAR	BUM	RR	
3	2♠ Gwaen Cae 7♣ Gurwen Porth	① RR 30 ✕ BUM			-1	+1	29 1
10	8♠ Maesteg 5♦ Cwmbran	① SWALK 15 ① RR 15		-5		+5	20 10
11	J♥ Bridgend 8♣ Pontypridd	① BUM 13 ① RR 12 ③ PEAR 5 ✕ BROOKS	-2	+1 +2	-1		14 12 2 2
12	6♦ Pontypool K♣ Rhymney	① BUM 16 ② BROOKS 7 ② PEAR 7	+4/-5 -5	+1 +5	+5/-4 -1		16 13 1
13	2♣ Aberdare 4♣ Pontardawe	① BROOKS 20 ② BUM 10 ✕ SWALK	-2 +3	-3	+2 +3		19 5 6
14	K♠ Hirwaun 2♦ Newport	① BROOKS 20 ② PEAR 10 ✕ BUM					20 10
15	5♠ Swansea 9♣ Abercynon	① BROOKS 20 ② RR 10					20 10
16	6♥ Cardiff 7♦ Blackwood	① BUM 13 ① BROOKS 12 ③ PEAR 5					13 12 5
18	A♠ West Wales 4♥ Cardiff	① SWALK 16 ② RR 9 ③ PEAR 5		+4 -4			20 9 1

Round 8 Routes
South Wales Kiss (SWALK) (Bob Coull, Black)
Pontypool - Blaenavon - Brynmawr (11)

Buses Running On Own Kinetic Servomechanism (BROOKS) (Simon Brooks, Orange)
Cardiff - Penarth - Barry - Rhooose (11)

Robertson's Routemasters (RR) (Simon Robertson, Blue)
Port Talbot - Blaengwynfi, Cwmbran - Pontypool (12)

Pontypool Expressways Are Rampant (PEAR) (Kevin Lee, Pink)
Tredegar - Rhymney - Dowlai, Tredegar - Ebbw Vale (10)

Bloody Useless Management (BUM) (Jim Reader, Yellow)
Caerphilly - Newport, Hirwaun - Aberdare (12)

Scores

	Runs:	3	10	11	12	13	14	15	16	18	Routes	Score
BROOKS	37	-	-	2	13	19	20	20	12	-	-11	112
BUM	61	1	-	14	16	5	6	-	13	-	-12	104
RR	38	29	10	12	-	-	-	10	-	9	-12	96
SWALK	36	-	20	-	-	6	-	-	-	20	-11	71
PEAR	41	-	-	2	1	-	4	-	5	1	-10	44

Round 9 Runs

6.	K♦ - 9♥	Blaenavon to Pontycymmer	
7.	10♥ - 6♣	Nantymoel to Tonypandy	(not yet available)
8.	10♠ - 4♦	Glyncorrwg to Risca	(not yet available)
9.	K♥ - 8♦	Talbot Green to Abertillery	(not yet available)
17.	9♠ - 10♦	Blaengwynfi to Ebbw Vale	
19.	6♠ - Q♦	Swansea to Abergavenny	
20.	J♣ - 2♥	Merthyr Tydfil to Barry	
21.	J♦ - 8♥	Brynmawr to Porthcawl	
22.	9♦ - 3♣	Tredegar to Treorchy	
23.	5♣ - 7♥	Ferndale to Llantwit Major	(not yet available)
24.	J♠ - A♥	Neath to Penarth	
25.	5♥ - 7♠	Cardiff to Port Talbot	
26.	3♠ - 4♣	Ystalyfera to Ystrad	

Runs	Routes
Enter up to 5	Buy in the order Kevin, Bob, Simon R, Jim, Simon B



BUS BOSS 299-NWA

Bettws Y Coed is a hot bed of development.

ROUND 3

North Wales

Machynlleth's Attractive Road Services (MARS) John Marsden, Green)
 Welshpool - Newtown, Welshpool - Oswestry 78 - 12 66

Graystone Runs Ugly Brown Buses Yet-Again (GRUBBY) (Michael Graystone, Brown)
 Bettws Y Coed - Conwy, Corwen - Llangollen 79 - 12 67

Llangollen Electric Engine Korporation (LEEK) (Colin Sharpe, Red)
 Bettws Y Coed - Conwy - Colwyn Bay 77 - 10 67

Holywell Expressways Are Rampant (HEAR) (Kevin Lee, Blue)
 Corwen - Bettws Y Coed 78 - 9 79

Ann Robinson Fan Club (ARFC) (Steve Ham, Orange)
 Ruthun - Wrexham - Ruabon 77- 12 65

Routes
Buy in the order Michael, Colin, Kevin, Steve, John



LANCASHIRE RAILWAYS 10

All over bar the shouting.

ROUND 11

Auctions	Bids:	RK	MB	TW	LQ
11a: Warrington & Stockport (7)		1	2	-	3
Build roll: 7 (built)		-	4	-	*5*

Commodity Movement		RK	MB	TW	LQ
Income:		18	18	5	17
Roger External Clitheroe to Stockport		4	1	-	-
Martin External St.Helens to Oldham		-	4	-	-
Tony X		-	-	-	-
Roger External Scotland to Stockport		4	-	-	1
Martin External Blackpool to Oldham		1	4	-	-
Tony X		-	-	-	-
Lyndon Industry Blackburn to Manchester		-	-	-	3
Market loss number: 9	Income lost:	-3	-3	-	-2
	Income:	24	24	5	18

Bank Loans	Acquired	Total	Interest	Retired	c/f
Roger	-	-	-	-	-
Martin	-	-	-	-	-
Tony	-	30	-6	-30	-
Lyndon	-	-	-	-	-

Cash Flow	Lyndon	67	Roger	52	Martin	58	Tony	20
Initial cash		40		70		33		7
Auctions & Builds	-5	35	-	70	-	33	-	7
Income	+18	53	+24	94	+24	57	+5	12
Interest	-	53	-	94	-	57	-6	6
Retired Loans	-	53	-	94	-	57	-30	-24
Railway Links	+67	120	+52	146	+58	115	+20	-4
Final Cash		120		146		115		-4

Roger is the clear winner, but Lyndon's railway link total puts him ahead of Martin when all is done.

1st	Roger Krueger	146
2nd	Lyndon Gurr	120
3rd	Martin Butcher	115
4th	Tony Wilcock	-4

Congratulations to Roger, and thanks to everyone for playing. Comments are welcome for next time, when the game will be wrapped up.





NEW ENGLAND RAILWAYS 8

No new links
for the leader.

ROUND 10

Auctions		Bids:	SK	MB	TW	MP
10a:	New Haven & Hartford (5)		1	*2*		
	Build roll: 7 (built)					
10b:	Fitchburg & Keene (7)		1	-	-	2
	Build roll: 11 (built)		3	-	-	*4*
10c:	Hartford & Springfield (5)		1	-	2	-
	Build roll: 9 (built)		3	-	*4*	

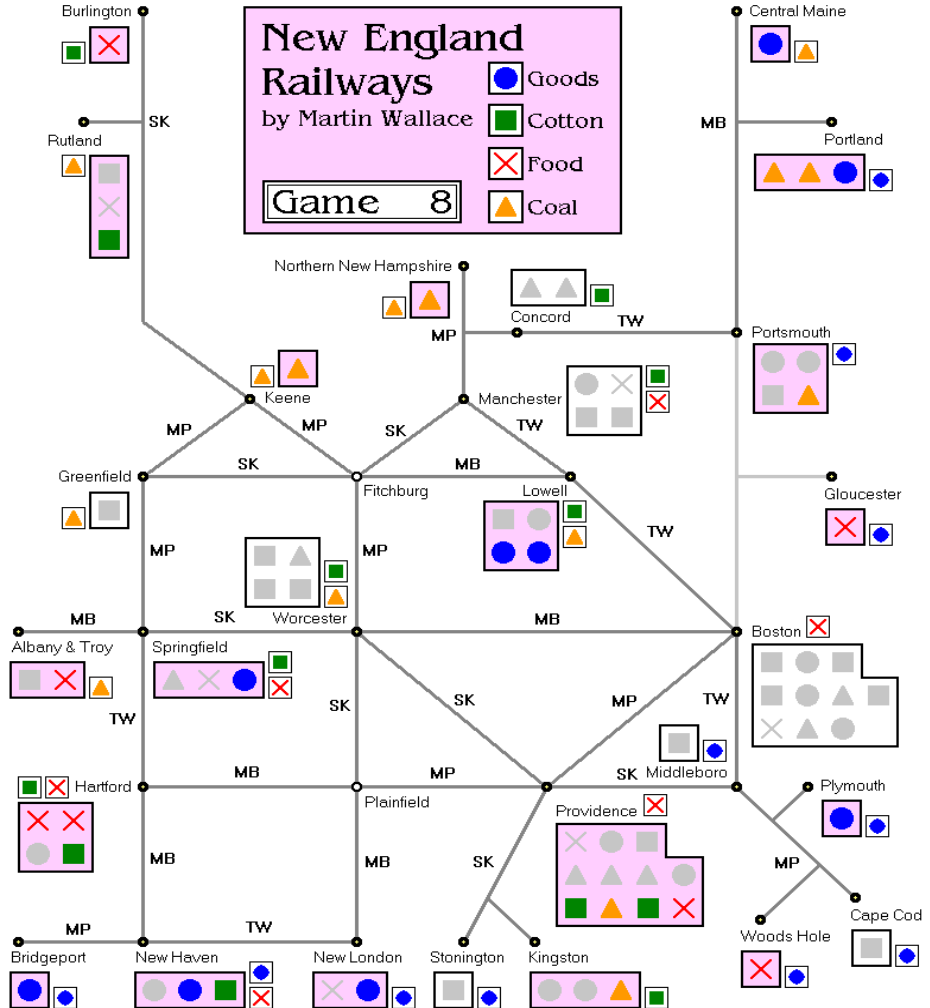
Commodity Movement		SK	MB	TW	MP
Income:		19	11	15	15
Sharon	Cotton Middleboro to Worcester	2	-	-	-
Sharon	Cotton Stonington to Worcester	2	-	-	-
Martin	Food Boston to Hartford	1	2	-	-
Tony	Goods Portsmouth to Middleboro	-	-	4	1
Marcus	Coal Concord to Keene	1	-	-	2
Market loss number: 12		Income lost:		2	1
		Income:		23	12
				18	17

Sharon remains the Train Player (income 23/cash 83).

Bank Loans	Acquired	Total	Interest	Retired	c/f
Sharon Khan	-	-	-	-	-
Martin Butcher	-	-	-	-	-
Tony Wilcock	-	20	-4	-10	10
Marcus Pratt	-	-	-	-	-

Commodity Growth and New Railway Links	
Lowell	Goods ◇ Link 11a: Boston & Gloucester, Portsmouth (8)
Central Maine	Goods

Cash Flow	Sharon	54	Martin	50	Tony	36	Marcus	61
Balance b/f		60		18		6		5
Auctions	-	60	-2	16	-4	2	-4	1
Income	+23	83	+12	28	+18	20	+17	18
Acquired Loans	-	83	-	28	-	20	-	18
Interest	-	83	-	28	-4	16	-	18
Retired Loans	-	83	-	28	-10	6	-	18
Balance c/f		83		28		6		18



Orders required	Sharon leads the playing order
Railway link bids 11a, commodity movement, loans	



OUTPOST 24

Martin is the auction
King for this round.

ROUND 14

Commander Actions

Martin Auctioned an Outpost for 100. Geoff joined at 101, Michael at 102. Martin dropped out at 102, Geoff at 110. Michael got it for 110 (o:4 w:4,5,6,9 r:9,12,13,15,16,17) plus a free Titanium Factory

- ▶ Auctioned an Outpost for 105. Geoff joined at 106. Martin dropped out at 106. Geoff got it for 106 reduced to 81 after Heavy Equipment / Ecoplants discounts (o:3 w:9,30,30 t:9) plus a free Titanium Factory
- ▶ Auctioned an Orbital Lab for 50. Geoff joined at 51, Jim at 52. Martin dropped out at 52, Geoff at 60. Jim got it for 60 (o:3,5 w:4,6 t:8,11,11,12)
- ▶ Auctioned an Orbital Lab for 50. Geoff joined at 51. Martin dropped out at 51. Geoff got it for 51 (t:8,44)
- ▶ Auctioned an Ecoplants for 30 and got it (w:5,6,8 t:11)

Mark Bought one New Chemicals Factory (w:10,30 t:11 r:11)

- ▶ Bought two Population Units (t:10,10)

Willem Bought three Research Factories (w:6,6 r:12,12,13,13,14,14)

Geoff Bought one Population Unit (o:5)

Lyndon Auctioned a Planetary Cruiser for 160 and got it (w:30 r:15 n:14,16,20,20,22 om:30)

Jim Bought one Population Unit (w:7)

Michael Bought one Robot (r:10)

Marcus Auctioned a Moon Base for 200 and got it (o:4,5 w:30,30 r:10,11,11,11,13,14,14,15,16,16)

PO	Name	Factories	Population	Robots	Production
1	Martin	2o,3w,6t	7 (10)	3 (7)	2o,3w,3t,2T,3m (196,20)
2	Lyndon	2o,5w,3n	8 (10)	0 (0)	3w,1r,3n,1om,1ro (164,15)
3	Geoff	2o,5w,6t	13 (18)	0 (0)	2o,2w,1W,2t,1T,1m (131,25)
4	Marcus	2o,4w,3r	8 (9)	0 (0)	1W,5r,1mo (145,10)
5	Mark	2o,6w,3t,1r,2n	13 (13)	0 (0)	1o,3w,1W,3t,1r,2m,3n (191,15)
6	Willem	2o,2w,5r	5 (5)	2 (10)	3o,2w,10r (153,10)
7	Michael	2o,4w,1t,4r	5 (10)	5 (5)	1o,4w,1t,5r (106,20)
8	Jim	2o,3w,4t	8 (8)	1 (8)	2o,3w,4t,1m (84,15)

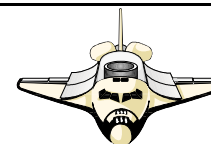
PO	Name	Colony Cards	Victory Points
----	------	--------------	----------------

1	Martin	WH, HE, OL, Rob, Eco, Eco, Eco, OP	44 (345)
2	Lyndon	WH, Nod, Sci, SS, PC	42 (370)
3	Geoff	WH, HE, Nod, OL, Eco, OP, OP	41 (360)
4	Marcus	HE, Nod, Sci, Lab, MB	40 (375)
5	Mark	HE, Nod, OL, Lab, OP	37 (285)
6	Willem	DL, DL, DL, DL, Sci, Sci, Rob, Rob, Lab, Lab	36 (400)
7	Michael	WH, Rob, Lab, OP	29 (255)
8	Jim	DL, WH, HE, Nod, OL, Rob, Eco	29 (225)

Data Library	0	Sold out	Laboratory	0	Sold out
Warehouse	0	Sold out	Ecoplants	0	Sold out
Heavy Equipment	0	Sold out	Outpost	0	Sold out
Nodule	0	Sold out	Space Station	1	(4 more)
Scientists	1	(none left)	Planetary Cruiser	3	(2 more)
Orbital Lab	1	(none left)	Moon Base	2	(3 more)
Robots	0	Sold out			

Orders required

Round fifteen auctions, bids and purchases



OUTPOST 25

Two Heavy Equipment
are purchased.

ROUND 5

Commander Actions

Jim Auctioned a Heavy Equipment for 30 and got it (o:4,5 w:6,6,9)

Sharon Bought one Water Factory (o:2,2,3 w:6,7)

Marcus Bought one Water Factory (o:3,4 w:5,8)

- ▶ Bought one Population Unit (o:4 w:7)

Willem Bought one Water Factory (o:2,2,4,5 w:7)

- ▶ Bought one Population Unit (o:3 w:7)

Kevin Bought one Population Unit (w:5,5)

David Auctioned a Heavy Equipment for 30 and got it (w:30)

PO	Name	Factories	Operators	Colony Cards	Production	VPs
1	Jim	2o,3w	5p (8,0)	HE, Nod	2o,4w (34,10)	8 (55)
2	Marcus	2o,4w	6p (8,0)	Nod	2o,5w (41,10)	8 (25)
3	Willem	2o,2w	4p (5,0)	DL, DL, DL	3o,2w (23,10)	7 (45)
4	Sharon	2o,4w	5p (8,0)	Nod	1o,1w,1W (40,10)	7 (25)
5	David	2o,4w	5p (5,0)	HE	2o,1w,1W (43,10)	6 (30)
6	Kevin	2o,3w	5p (5,0)	DL	4o,4w (40,10)	6 (15)

Data Library	0	Sold out	Heavy Equipment	2	(none left)
Warehouse	3	(1 more)	Nodule	1	(none left)

Orders required

Round six auctions, bids and purchases



PUERTO RICO 4

The report has been updated this month.

ROUND 12

Kevin is the Trader and trades Corn.

The Trading House is emptied.

Geoff is the Mayor (+1).

Jim is the Settler (+2).

Stephen and Kevin plant Corn, Geoff plants Indigo.

Stephen is the Captain.

The Tobacco and Indigo ships are emptied

Roles	+1 Builder	Captain	+1 Craftsman	Mayor
	Settler	Trader	+1 Prospector	

Quarries	Plantations (Fields)					Trading House				Ship	Supply
1	Crn	Ind	Sug	Tob	Cof	-	-	-	-	12	17

Buildings	VP	SIP	2	SSM	2	SMA	×	HAC	1	CON	2	SWA	1
2 VPs	LIP	2	LSM	2	HOS	2	OFF	2	LMA	1	LWA	2	
3 VPs	TOB	×	COF	1	FAC	×	UNI	2	HAR	2	WHA	1	
4 VPs	GUI	×	RES	×	FOR	×	CUS	×	CIT	×			

Cargo Ships	5: Sugar	6: Empty	7: Empty
	✓ ✓ ✓ ✓ -	- - - - -	- - - - -

Geoff Hardingham	• Small indigo plant	• Small sugar mill	• Tobacco storage	• Coffee roaster
DbIns: 6	• Factory	• Guild hall	• City hall	
Chips: 7	Fields: Qry✓✓ Crn✓ Ind✓ Sug ✓ Tob✓ Cof✓✓	Goods: Cof✓		
Jim Reader	• Indigo plant	• Tobacco storage	• Small market	• Hacienda
DbIns: 3	• Fortress			
Chips: 9	Fields: Qry✓✓ Crn✓ Ind✓ Sug✓ Tob✓ Cof✓	Goods: Tob✓		
Stephen Webb	• Small indigo plant	• Sugar mill	• Tobacco storage	• Small warehouse
DbIns: 2	• Factory	• Wharf		
Chips: 16	Fields: Qry✓✓ Crn✓ Ind✓ Sug ✓ Tob✓	Goods: Tob✓		
Kevin Lee	• Small sugar mill	• Coffee roaster	• Small market	• Large market
DbIns: 5	• Residence	• Customs house		
Chips: 9	Fields: Qry✓ Crn✓ Ind✓ Sug✓ Cof✓	Goods: Cof✓		

Orders required

Round thirteen orders in the sequence Geoff, Jim, Stephen, Kevin



PUERTO RICO 5

Produce, ship, prospect and trade.

ROUND 7

Paul is the Craftsman (+1) and produces an extra Indigo.

Allan is the Captain.

Cargo ship '5' is emptied.

Jim is the Prospector (+1).

Brian is the Trader and trades Coffee.

Paul trades Sugar.

Roles	+2 Builder	Captain	Craftsman	+1 Mayor
	+1 Settler	Trader	Prospector	

Quarries	Plantations (Fields)					Trading House				Ship	Supply
5	Crn	Ind	Sug	Cof	Cof	Crn	Cof	Sug	-	6	49

Buildings	VP	SIP	3	SSM	2	SMA	×	HAC	2	CON	2	SWA	1
2 VPs	LIP	2	LSM	3	HOS	1	OFF	2	LMA	2	LWA	2	
3 VPs	TOB	2	COF	2	FAC	2	UNI	2	HAR	2	WHA	2	
4 VPs	GUI	1	RES	1	FOR	1	CUS	1	CIT	1			

Cargo Ships	5: Empty	6: Tobacco	7: Indigo
	- - - - -	✓ ✓ - - -	✓ ✓ ✓ - -

Jim Reader	• Tobacco storage	• Hospice	
DbIns: 2	Fields: Qry✓✓ Ind✓ Tob✓✓ Cof✓	Goods: ✗	
Chips: 2			
Brian Tappenden	• Small indigo plant	• Coffee roaster	• Small market
DbIns: 8	Fields: Crn✗ Ind✓ Tob✗ Cof✗	Goods: ✗	
Chips: 5			
Paul Tappenden	• Small sugar mill	• Indigo plant	• Small market
DbIns: 6	Fields: Crn✗ Ind✓ Sug✓ Tob✓ Cof✗	Goods: ✗	
Chips: 9			
Allan Stagg	• Small sugar mill	• Small warehouse	
DbIns: 4	Fields: Qry✓ Crn✓ Ind✗ Sug✗	Goods: ✗	
Chips: 10			

Orders required

Round eight orders in the sequence Allan, Jim, Brian, Paul



RAIL BARON 14

PFFFT gets payments for use of his lines on each turn.

ROUND 9

Kevin Lee : Green : Pocatello Expressways Are Rampant (PEAR) : Cash 25½K
(Home: El Paso)

- 41: {10} CRI&P to Oklahoma City {+10½} {-1 PFFFT}
- 42: {11} AT&SF to Chicago {+8} {-10 BUM}
- 43: {8} C&NW to St.Paul {+4} {-1 bank}
- 44: {6} C&NW to Chicago {-1 bank}
- 45: {6} C&O to 1 S of Columbus {-1 bank}

Jim Reader : Yellow : Bloody Useless Management (BUM) : Cash 41½K
(Home: Detroit)

- 41: {10} PA/NYNH&H to Boston {+17½} {-5 C&T -10 PFFFT}
- 42: {11} NYNH&H/NYC to 1 S of Detroit {+10 PEAR -10 PFFFT}
- 43: {8} NYC/AT&SF to Kansas City {-1 bank -10 PFFFT}
- 44: {6} AT&SF to 1 S of Oklahoma City {-1 bank}
- 45: {6} AT&SF/SLSF to Dallas {+18½} {-1 bank -10 PFFFT}

John Shelley : Red : St.Louis, Atlanta, Plains & Pacific Electric Railroad System (SLAPPERS) : Cash 24K
(Home: Atlanta)

- 41: {10} WP to San Francisco {+30½} {-5 PFFFT}
- 42: {11} WP/UP to 2 NE of Salt Lake City {-10 PFFFT}
- 43: {8} UP/CB&Q to 2 E of Denver {-1 bank -10 PFFFT}
- 44: {6} CB&Q to Omaha {-1 bank}
- 45: {6} CB&Q to Chicago {-1 bank}

Roger Krueger : Blue : PFFFT (Pennies Flattened for Feckless Teens) : Cash 20½K
(Home: San Francisco)

- 41: {10} SLSF/NYC to 1 NE of St.Louis {-1 bank +1 PEAR +10 BUM +5 SLAPPERS +5 C&T}
- 42: {11} NYC to Buffalo {+14} Buys Superchief {-40} {-1 bank +10 BUM +10 SLAPPERS}
- 43: {10} NYC/CRI&P to Des Moines {-1 bank +10 BUM +10 SLAPPERS +10 C&T}
- 44: {10} CRI&P/UP to 2 NE of Denver {-1 bank +10 C&T}
- 45: {8} UP to Salt Lake City {-1 bank +10 BUM +10 C&T}

Derek Wilson : Black : Cut & Thrust (C&T) : Cash 55K
(Home: Los Angeles)

- 41: {10} WP/D&RGW to 3 SE of Salt Lake City {-1 bank +5 BUM -5 PFFFT}
- 42: {11} D&RGW/MP to 2 W of Kansas City {-1 bank}
- 43: {8} MP/SLSF to Oklahoma City {+17½} Buys Superchief {-40} {-1 bank -10 PFFFT}
- 44: {10} CRI&P/SLSF to Birmingham {+7½} {-10 PFFFT}
- 45: {8} L&N/NYC to 1 N of Cincinnati {-10 PFFFT}

Turn	Basic Throw	Bonus	Priority	
46	2+3=5	2 (S)	PEAR	With two Superchiefs in play, the bonuses for those trains will appear for every movement roll from now on.
47	4+6=10	5 (S)	BUM	
48	2+2=4	3 (E/S)	SLAPPERS	
49	3+1=4	4 (S)	PFFFT	
50	5+5=10	1 (E/S)	C&T	

Player	Colour	First Destination	Payout	Second Destination	Payout
PEAR	Green	Boston (NE)	14,000	Indianapolis . . (NC)	9,500
BUM	Yellow	New Orleans . . (SC)	5,000	Pittsburgh (NE)	11,500
SLAPPERS	Red	New York (NE)	31,500	Oklahoma City . . (PL)	16,000
PFFFT	Blue	San Diego (SW)	27,000	Portland (NE)	33,500
C&T	Black	Pittsburgh (NE)	8,000	Kansas City . . . (PL)	9,000

Additional destinations for <i>BUM</i>	Pittsburgh to:	Norfolk (SE)	5,000
	Norfolk to:	Buffalo (NE)	6,500
Additional destinations for <i>C&T</i>	Kansas City to:	Los Angeles . . (SW)	17,500
	Los Angeles to:	Jacksonville . . (SE)	26,000

Player	Train	Railroads	Cash
PEAR	E	B&M, C&NW, C&O, SP	\$34,000
BUM	E	AT&SF, GM&O, GN, RF&P, SAL	\$39,500
SLAPPERS	N	ACL, B&O, CB&Q, IC, NP, SOU	\$26,500
PFFFT	S	CRI&P, L&N, N&W, NYC, NYNH&H, SLSF, UP, WP	\$90,500
C&T	S	CMStP&P, D&RGW, MP, PA, T&P	\$7,000

Jim was convinced he needed another destination, but I didn't see his note until I ran the game. If you have a query, please put that at the very top of your orders. I look at the first couple of lines of each order when I file them but do not read all of every order when they come in.

As it turns out, it wasn't needed. In turn 42 he travelled on the NYNH&H and NYC, but I reckon he counted using the B&M and the NYC. Interesting decision - follow the route as described or use the route as it appeared to be counted? I went for following the described route. It still cost an extra \$10,000...

Orders required

Turns 46 to 50



ACQUIRE 45

Not quite as first reported...

GAME OVER

1st	John Colledge	£46,200
2nd	Michael Graystone	£38,700
3rd	Kevin Lee	£29,500
4th	Colin Sharpe	£26,600
5th	Tony Wilcock	£22,200

Tony Wilcock (5th): John just beats Michael but they are well ahead of the rest of us, so my congratulations to these two players.

Tony drops to fifth, because John actually bought 3 Continental, not Festival, and took the majority bonus for that chain. Apologies for the late change.



RAILROAD TYCOON 1

Cash doesn't seem
to be a huge problem.

ROUND 6

First player auction
Simon wins the auction

Bids: JS MS SR ML
- - *1*

Round 6.1

Simon Built from Baltimore to Pittsburgh (cost 20,000 - issued 1 share)

Michael Built from Wilmington to Charleston (cost 7,000)

Joakim Delivered grey from Chicago to Louisville (3 VPs)

Mark Delivered grey from Pittsburgh to Louisville (3 VPs)

Round 6.2

Simon Delivered blue from Boston to Philadelphia (3 VPs)

Michael Upgraded to a '5' engine (cost 20,000 - issued 1 share)

Joakim Delivered grey from Indianapolis to Louisville (2 VPs)

Mark Built from Chattanooga to Atlanta (cost 4,000)

Round 6.3

Simon Delivered yellow from New Haven to Baltimore (3 VPs)

Michael Delivered red from Raleigh to New York (6 VPs)

Joakim Built from Nashville to Birmingham (cost 9,000)

Mark Delivered yellow from Atlanta to Cincinnati (4 VPs)

Cash flow	Joakim		Mark		Simon		Michael	
Balance b/f		16		8		16		22
Shares	7	-	16	9	2	+5	21	8
Expenditure	-9	7	-4	4	-21	0	-27	0
Income	+19	26	+18	22	+18	18	+22	22
Share dividends	-7	19	-9	13	-2	16	-8	14
Shares issued	-	19	-	13	-	16	-	14
Balance c/f		19		13		16		14

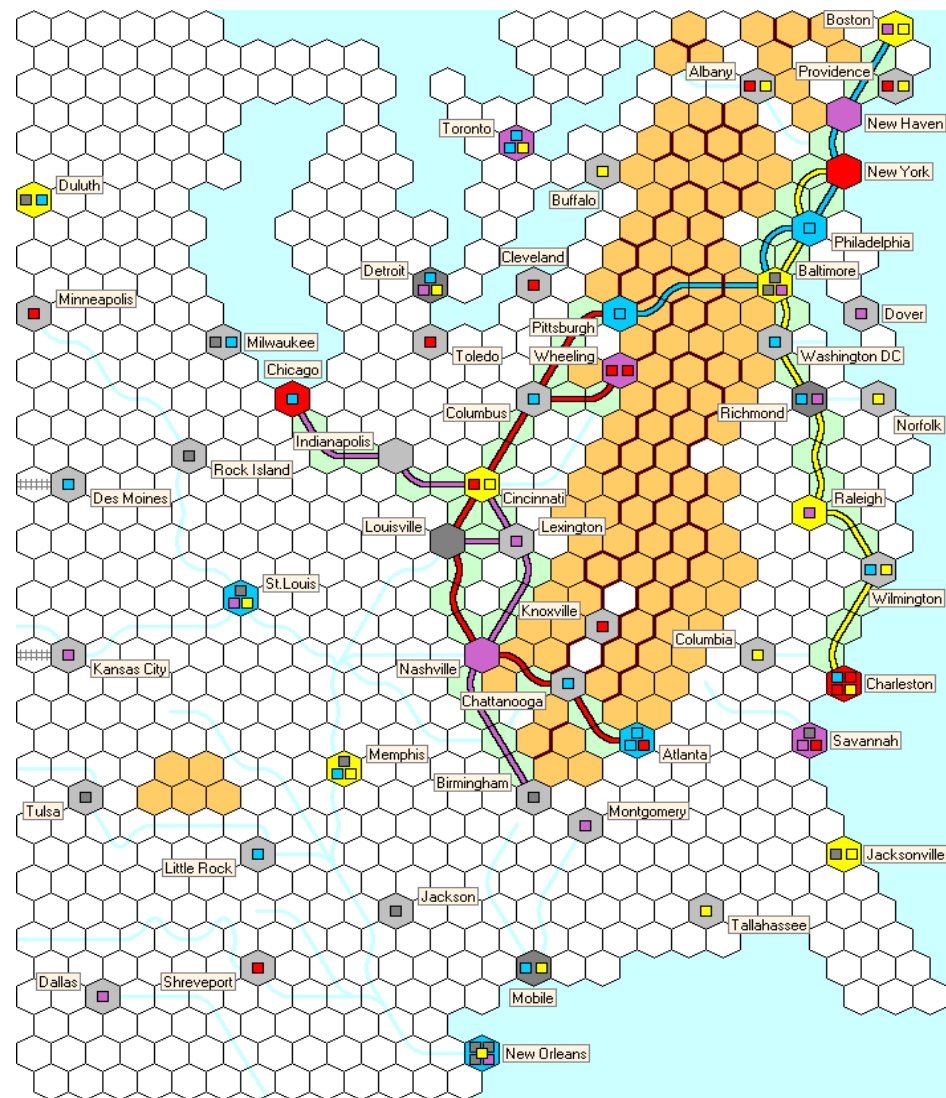
Player	Colour	Train	VPs	Railroad Operation Cards
Joakim	Purple	4	22	-
Mark	Red	4	19	-
Simon	Blue	3	20	Hotel (Boston)
Michael	Yellow	5	31	Hotel (New York)

- Service Bounty (Mobile)
- ✖ City Growth (2 new cubes)
- Major Line (Baltimore/Toledo) (6)
- Major Line (New York/Chicago) (10)
- ✖ City Growth (2 new cubes)
- Service Bounty (Jacksonville)
- ✖ New Industry (urbanise)
- Government Land Grant (free build)
- Government Land Grant (free build)
- Major Line (Atlanta/Richmond) (8) **New**

Indianapolis and New Haven are emptied, bringing us up to five empty cities.

There are 5 empty cities.

The game end is triggered with 14 empty cities.



Orders required

Bids for first player, followed by three sets of actions



RAILWAY RIVALS 2026-DM

A game of one half.

GAME OVER

1st	Tony Bromley	TRADE	421
2nd	Brian Tappenden	BT	324
3rd	Michael Graystone	GREAT	280
4th	Michael Longdin	100%	184
5th	Jim Reader	KIMBPU	183

Tony Bromley (TRADE, 1st): I built directly west from Copenhagen as it seemed to be the quickest route. I had expected all other starters from Copenhagen to do the same. I went south when on the mainland to connect to the 60 numbers. Many thanks to Keith and for his expert adjudications!

Jim Reader (KIMBPU, 5th): It's probably no surprise that I didn't really enjoy this. My first and biggest area was failing to compare Jylland with Zeeland; Zeeland is much smaller, even including Fyn, and so the towns are much closer. This gave a considerable advantage to the three starts in Copenhagen and I think this showed in the final scores (my other start in Aalborg had lots of points from towns, but I don't think he scored so well in racing). I don't think my line in Jylland was so bad, but I was rarely competitive with the other sector races. I don't think I would play this map again unless the start positions were changed.

Congratulations to Tony for a comfortable win and thanks to Keith and everyone else for the game.

The double-set of destination meant that you could concentrate your efforts on half of the towns, as one set was all you needed to reach, which is what you mostly did. Tony just managed to do it rather better than the rest.



RAILWAY RIVALS 2028-DC

Changing positions.

ROUND 12

Devon and Cornwall

Round 12 Runs		FERRET	GREAT	WCRC	
31	36 Kingsbridge 63 Lynton	① FERRET 30			30
32	21 Padstow 42 Newton Abbot	① FERRET 30 ✕ WCRC	+6	-6	24 6
33	61 Ilfracombe 35 Okehampton	① GREAT 15 ① WCRC 15	+2/-2	+2/-2	15 15
34	53 Taunton 11 Penzance	① GREAT 30			30
35	26 Looe 16 Newquay	① FERRET 13 ① GREAT 12 ③ WCRC 5	-3	+3 +2	16 14 0

36	56 Dulverton 46 Exeter	① FERRET 20 ② GREAT 10	-1	+1	21 9
----	---------------------------	---------------------------	----	----	---------

Scores								
	Runs:	31	32	33	34	35	36	Score
GREAT	396	-	-	15	30	14	9	464
FERRET	343	30	24	-	-	16	21	434
WCRC	308	-	6	15	-	0	-	329

After the first two runs, FERRET was in the lead, but couldn't maintain it with four more runs to come for GREAT.

1st	Michael Graystone	GREAT	464
2nd	Tim Franklin	FERRET	434
3rd	Peter Robbins	WCRC	329

Congratulations to Michael and thanks to everyone for playing. Comments next time will let us wrap it up and move on.



RAILWAY RIVALS 2051-EA

COLIN wins the race to Bury St Edmunds.

ROUND 2

East Anglia {16 points for these builds}
Graystone Railways Entertain Another Territory (GREAT) (Michael Graystone, Brown)
L11 - K12 - K14 - Ipswich - Woodbridge - H16 - E18 - E20.
25 +1 (towns) = 26

Woodbridge Expressways Are Rampant (WEAR) (Kevin Lee, Red)
O12 - O14 - Sudbury - P15 - O16 - O17 - P17 - Bury St Edmunds - Thetford,
P9 - Tollesbury - N7.
22 +12 (towns) -6 (COLIN) = 28

Opening Directly East (ODE) (John Marsden, Orange)
K16 - J15 - Ipswich, Stowmarket - O19, J18 - Diss - J25 - Norwich, D22 - Beccles, D21 - C21.
23 +18 (towns) = 41

Theophilus' Goods Vehicles (TGV) (Simon Robertson, Blue)
L11 - K12 - K13 - J13 - Ipswich - Woodbridge, Z3 - C55, Chelmsford - R6 - R5 - Southend.
25 +7 (towns) = 32

Cromer Ongar London Inter Network (COLIN) (Colin Sharpe, Black)
T18 - P20 - Thetford, P20 - Bury St Edmunds, Thetford - M23 - East Dereham - M28 - L28.
32 +9 (towns) +6 (WEAR) = 47

Colin, your build started from T26 - which was counting the wrong way from T22 on the map. Please bear in mind my comment last time - do not assume which way the hex numbers go.

Builds
Up to 15 points excluding payments to rivals





RAILWAY RIVALS 2029-DC

YOKEL closes up,
but just a little.

ROUND 11

In run 19 last time, GITCO took first place. The scores were right, the order was wrong.

Devon and Cornwall

Round 11 Runs			ODE	YOKEL	GITCO	
25	22 Wadebridge 11 Penzance	① YOKEL 30 ✕ ODE	-3	+3		27 3
26	53 Taunton 15 Truro	① GITCO 20 ② YOKEL 10				20 10
27	34 Tavistock 42 Newton Abbot	① ODE 30				30
28	35 Okehampton 62 Barnstaple	① GITCO 16 ② YOKEL 9 ③ ODE 5	+4	+1	-1 -4	21 8 1
29	54 Taunton 23 Bodmin	① YOKEL 16 ② GITCO 9 ③ ODE 5				16 9 5
30	44 Sidmouth 65 Launceston	① GITCO 20 ② ODE 10				20 10

Round 11 builds

Old Devon Enterprise (ODE) (John Marsden, Orange)
None. +2 (GITCO) = +2

Yellow Original King-sized Engines Limited (YOKEL) (Jim Reader, Yellow)
None.

Goram Is Tony's Cornish Origin (GITCO) (Tony Sait, Green)
O22 - M23, Z27 - Z26 - A70 - A69. -5 (builds) -2 (ODE) = -7

Scores

	Runs:	25	26	27	28	29	30	Builds	Score
GITCO	373	-	20	-	21	9	20	-7	436
ODE	287	3	-	30	1	5	10	+2	338
YOKEL	229	27	10	-	8	16	-	-	290

Round 12 Runs

31.	64 - 16	Bude to Newquay
32.	41 - 56	Torquay to Dulverton
33.	13 - 33	Redruth to Plymouth
34.	32 - 21	Plymouth to Padstow
35.	46 - 66	Exeter to Bideford
36.	26 - 55	Looe to Tiverton

Runs
Enter up to 4



RAILWAY RIVALS 2030-DC

TGV's lead is
cut a little.

ROUND 9

Devon and Cornwall

Round 9 Runs			THUD	REAL ALE	TGV	
13	41 Torquay 13 Redruth	① REAL ALE 30 ✕ THUD ✕ TGV	-4	+4 +2	-2	24 4 2
14	16 Newquay 43 Exmouth	① THUD 13 ① TGV 12 ③ REAL ALE 5	+1 +3/-2	+2/-3 -3	-1 +3	11 10 9
15	55 Tiverton 63 Lynton	① THUD 30				30
16	23 Bodmin 33 Plymouth	① REAL ALE 20 ② TGV 10				20 10
17	22 Wadebridge 52 Honiton	① TGV 20 ② REAL ALE 10		+1/-2	+2/-1	19 11
18	31 Liskeard 66 Bideford	① THUD 20 ② TGV 10 ✕ REAL ALE	+3/-3 +3	-3	+3/-3	17 10 3

Round 9 builds

Travel Hotspot Under Development (THUD) (Bob Coull, Black)
J10 - I10. -1 (builds) -1 (REAL ALE) -1 (TGV) = -1

Rail Efficiency and Luxury, All-the-way-to Lands End (REAL ALE) (Steve Ham, Brown)
L11 - J10. -6 (builds) -1 (THUD) = -7

Theophilus' Goods Vehicles (TGV) (Simon Robertson, Blue)
None. +1 (THUD) = +1

Scores

	Runs:	13	14	15	16	17	18	Builds	Score
TGV	221	2	10	-	10	19	10	+1	273
REAL ALE	187	24	9	-	20	11	3	-7	247
THUD	156	4	11	30	-	-	17	-1	217

Round 10 Runs

19.	53 - 23	Taunton to Bodmin
20.	55 - 34	Tiverton to Tavistock
21.	41 - 31	Torquay to Liskeard
22.	64 - 22	Bude to Wadebridge
23.	61 - 13	Ilfracombe to Redruth
24.	16 - 43	Newquay to Exmouth

Runs	Builds
Enter up to 4	Up to 10 points excluding payments to rivals



RAILWAY RIVALS 2046-DC

YOKEL takes the lead during the builds.

ROUND 7

Devon and Cornwall

Round 7 Runs

			TRADE	YOKEL	PASTIE	
1	61 Ilfracombe 13 Redruth	① TRADE 15 ① YOKEL 15		+9		24 6
4	55 Tiverton 26 Looe	① YOKEL 13 ① TRADE 12 ③ PASTIE 5	+2	-2 +3/-5	+5/-3 -2	17 8 5
5	15 Truro 34 Tavistock	① TRADE 15 ① YOKEL 15		+6		21 9
6	42 Newton Abbot 23 Bodmin	① YOKEL 15 ① TRADE 15	+7	-7		22 8

Round 7 builds

Taunton Rapid Express (TRADE) (Tony Bromley, Orange)
U37 - Sidmouth, U39 - Honiton, Y28 - Y26. -10 (builds) +6 (towns) +3/-3 (PASTIE) = -4

Yellow Original King-sized Engines Limited (YOKEL) (Jim Reader, Yellow)
M9 - Newquay, Newton Abbot - O34 - Torquay, O34 - L32 - L31 - Kingsbridge.
-10 (builds) +18 (towns) = +8

Poor and Shaky Trains in Exeter (PASTIE) (Don Shailer, Green)
W40 - Honiton, D74 - E74 - Lynton, W40 - V39 - Sidmouth.
-9 (builds) +12 (towns) +3/-3 (TRADE) = +3

Scores

	Runs:	1	4	5	6	Builds	Score
YOKEL	67	6	17	9	22	+8	129
TRADE	71	24	8	21	8	-4	128
PASTIE	66	-	5	-	-	+3	74

Round 8 Runs

2.	53 - 63	Plymouth to Lynton
3.	46 - 52	Exeter to Honiton
7.	56 - 35	Dulverton to Okehampton
8.	45 - 16	Exeter to Newquay
9.	36 - 41	Kingsbridge to Torquay
10.	53 - 11	Taunton to Penzance
11.	24 - 62	St.Austell to Barnstaple (not yet available)
12.	65 - 21	Launceston to Padstow

With two carried over, you can enter up to five runs next time.

Runs	Builds
Enter up to 5	Up to 10 points excluding payments to rivals



RAILWAY RIVALS 2052-IP

One down already.

SET UP

Peter Mearns has dropped out of contact, so this game comes down to four players.

Israel and Palestine

Player/Colour	Start	Railroad
Tony Bromley	Haifa	Transit Across Israel from Palestine to Syria
Red		(TRIPS)
Simon Brooks	Jerusalem	Buses Running On Own Kinetic Servomechanism
Orange		(BROOKS)
Bob Coull	Tel-Aviv-Jaffa	Tours of the Old Testament
Black		(TOT)
Jim Reader	Tel-Aviv-Jaffa	Friendly Arab Trains Around the Holy Land
Yellow		(FATAH)

Simon didn't specify a company name, so I assume it will be the usual - even though we're running trains rather than buses.

The drop from five players to four means that Haifa only gets one starter. Apologies if you feel you would have chosen differently if you had known it was going to be just four. Just bear in mind that the dice resolved some of the starting places.

Builds
Up to 14 points excluding payments to rivals

UK GAMES EXPO 2007

UK Games Expo will take place at the The Clarendon Suites, Stirling Road (off Hagley Road), Edgbaston, Birmingham (UK), June 2nd-3rd, 2007.

The United Kingdom has a long tradition of miniatures games, board games and other similar shows dating back many years. However, whilst mainland Europe and the USA have attracted many thousands of visitors to major international events in Essen and Indianapolis, the UK has been very much in their shadow.

UK Games Expo intends to begin to challenge that dominance. The UK deserves a showcase convention of the very best in the world of gaming, whether it be miniatures games, board games, card games, role-playing games or computer games.

I shall be at the show with Heron Games and would like to see as many people there as possible. Advance orders for games can be collected at the show to avoid paying any postage. I'll also be promoting For Whom the Die Rolls and For Whom the Web Rocks.

Book those dates and book your tickets early. There's more information on the web site (www.ukgamesexpo.co.uk) but unfortunately no options to register on-line as yet.



SAINT PETERSBURG 1

The available aristocrats don't hang around.

PHASE 2-A

Round 2 - Aristocrat Phase

Rob	Mike	Geoff	Sharon
Buys Warehouse Manager	Buys Author	Plays Gold Miner from hand	✗
Takes Black Market into hand	Takes Black Market into hand	✗	✗
Upgrades Warehouse Manager to Senator from hand	Uses Black Market to discard Customs House from hand	✗	✗
✗	✗		



Players	Rubles	VPs	Worker	Building	Aristocrat	Leads Phase	Cards
Geoff	7	4	9r + 0v	0r + 3v	2r + 0v	Building	18
Sharon	17	0	12r + 0v	0r + 0v	4r + 0v	Worker	17
Rob	9	2	12r + 0v	0r + 0v	5r + 2v	Aristocrat	22
Mike	12	3	12r + 1v	0r + 1v	2r + 0v	Trading	28

Players	Cards in hand (Limit)	Cards in play
Geoff	Minister of Foreign Affairs, Hofnarr (Jester)	Lumberjack, Gold Miner x 2, Market x 2, Warehouse, Observatory, Administrator
Sharon	Library	Lumberjack, Shepherd x 2, Ship Builder, Potjemkin's Village (3/8), Secretary
Rob	Weg Damit (Discard)	Lumberjack, Shepherd, Fur Trapper, Ship Builder, Warehouse Manager, Senator
Mike	Weg Damit (Discard)	Gold Miner, Ship Builder, Market, Author x 2, Wharf

Orders required

Trading phase led by Mike



SCEPTRE OF ZAVANDOR 1

Diamonds are the new Sapphire.

ROUND 8

Actions

- Kevin Sold an Opal {5}
- Bought a Diamond {40}
- Geoff Increased knowledge of Gems to level 2 {4}
- Bought a Diamond {32}
- David Bought a Sapphire {12}
- Increased knowledge of Artifacts to level 3 {8}
- Sharon Auctioned a Magic Belt for 30 and got it {30}
- Increased knowledge of Gems to level 2 {4}
- Tim Passed
- Lyndon Auctioned a Crystal of Protection for 40 and got it {30} {6th place discount}
- Auctioned a Crystal of Protection for 40 and got it {30} {6th place discount}

PO	Name	Character	Gems	Active/Limit	Dust	Energy Cards	Hand Limit
1	Kevin	Mage	s:3 d:2	5/5	-	s:3 d:2	9
2	David	Witch	o:3 s:4	7/8	12	s:1 S:1	6
3	Geoff	Fairy	o:1 s:2{1} d:2	5/5	10	s:3 d:2	5
4	Sharon	Kobold	o:2 s:4	6/8	9	S:1	8
5	Lyndon	Elf	o:3{1} s:2	5/5	20	s:2 e:2	5
6	Tim	Druid	o:1 e:2	3/7	6	e:4	8

PO	Name	Artifacts	Knowledge	New Knowledge Cost	VPs/Gems
1	Kevin	RS CB EL	Sages:1 Art:4	25/30/35/40	13/7
2	David	SB MB	Gems:4 Art: 3 Acc: 2	30/35/40	12/7
3	Geoff	RS EL	Gems:2 Sages:4 Acc:1	30/35/40	12/7
4	Sharon	SB CB MB MM	Gems:2 Acc:2	20/25/30/35	12/6
5	Lyndon	RS CP CP	Energy:4 Sages:1 Art:3	50/35/40	12/5
6	Tim	SB CB MB	Fire:2	20/25/30/35/40	9/5

Artifacts on offer: 2 Magic Mirrors, 1 Crystal of Protection, 1 Elixir, 1 Mask of Charisma, 1 Magic Wand

More new notation - for Geoff and Lyndon their sapphires are shown as s:2{1}, meaning two active, one inactive. Well, that's Geoff's. Lyndon's is shown as s:3{1} as he has more active sapphires.

Orders required

Round nine gem dealing, knowledge improvement, auctions and bids





Heron Games

Here is a selection of games from the shop. It's not everything - visit the web site (www.herongames.com) for the full story.

I aim to keep most prices about 10% below list price, with UK post and packing £6 at the most whatever the size of the order. Let me know if you're interested in anything on the list. New items are fairly thin at this time of year, but we do have some. Some are not brand new, but have either just arrived, been reprinted or been released in a new version.

18Rh1 Rheinland	Coming..	Great War at Sea - Jutland	£34.50
Ave Caesar	£19.00	Khronos	£27.00
Cave Troll	£18.00	Ramparts	£25.00
Caylus (reprint)	£25.00	Runebound: Sands of Al-Kalim . .	£22.50
Descent: Altar of Despair	£22.50	Space Blast	£15.50
1830 Variant Box No.1	£20.00	Lost Cities	£13.50
1856	£31.50	Medici vs Strozzi	£13.50
1860: Isle of Wight	£27.00	Metromania	£18.00
1861: Russia	£36.00	Nottingham	£9.00
1870	£31.50	On the Underground	£22.50
6 nimmt!	£6.00	Parthenon: Rise of the Aegean . .	£31.50
Antike	£32.00	Perikles	£22.50
Apples to Apples	£18.00	Princes of Florence	£27.00
Apples to Apples Exp #1	£9.00	Puerto Rico	£25.00
Apples to Apples Exp #2	£9.00	Ra	£25.00
Arkham Horror	£31.50	Railroad Tycoon	£36.00
Arkham: Curse of the Pharaoh . .	£13.50	Really Nasty Motor Racing Game	£13.50
Arkham: Dunwich Horror	£25.00	Sceptre of Zavandor	£27.00
Around the World in 80 Days . .	£22.50	Section X	£18.00
Axis & Allies: Battle of the Bulge	£36.00	Settlers of Catan	£22.50
BattleLore	£45.00	(most Settlers/Catan titles are in stock)	
Blue Moon City	£25.00	Shear Panic	£18.00
Britannia	£22.50	Silk Road	£31.50
Carcassonne	£13.50	Skyline of the World	£18.00
(most Carcassonne titles are in stock)		Space Dealer	£18.00
Coloretto	£5.00	Sticheln	£6.00
Descent	£45.00	Take it Easy!	£18.00
Descent: Well of Darkness	£25.00	Take it to the Limit!	£22.50
Europe Engulfed	£72.00	Tara, Seat of Kings	£22.50
Gheos	£31.50	Tempus	£25.00
Gloria Mundi	£29.00	Thurn and Taxis	£20.50
Hacienda	£25.00	Ticket to Ride	£27.00
Iliad	£13.50	To Court the King	£18.00
Imperial	£34.00	Twilight Struggle	£36.00
Khet: The Laser Game	£31.50	Warrior Knights	£31.50
Krumbel!	£14.50	World Cup Game	£31.50

If you're looking for something else, you can always ask. ✱

NEWS FROM THE ROCK

<http://www.fwtwr.com/>



This is the section that provides news of the Internet sibling of this zine.

✱ They say that no news is good news. Basically, the web games are moving on at a good pace and nothing unusual is happening, so I won't rock the boat too much.

✱ Here are the current web ratings for zine subscribers with a rating of 2.0 or more:

▲ Rob Thomasson	2.955
▼ Roger Krueger	2.882
- Martin Butcher	2.367
▲ Michael Longdin	2.136
- Bob Coull	2.000

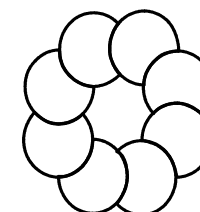
✱ Completed games and winners:

1856 e659 {1856-O21}	Willem Moene
Saint Petersburg e662	Michael Longdin
Saint Petersburg e664	Rob Thomasson
Puerto Rico e684	Lew Stansby
Puerto Rico e689	Peter Hawkins
1830 e699 {1830-F22}	Ken Boucher
Acquire e702	Michael Graystone
Carcassonne e705	Peter Beck
Ingenious e709	Lew Stansby

✱ New games and start dates:

Saint Petersburg e715	Dec 28th
Carcassonne e716	Jan 10th
Acquire e717	Jan 14th
Puerto Rico e718	Jan 17th
1856 e719 {1856-S22}	Jan 18th
Acquire e720 {Powers}	Jan 19th
Princes of Florence e721	Jan 20th
E&T e722 {Artists}	Jan 28th

✱



PREVIEW

Waiting lists continue to fill, although not as quickly as they used to. The latest one is the South Scotland Railway Rivals game, with the list for the Central Scotland map already occupied.

Railway Rivals is over 30 years old. The earliest date I have on a game is 1974 for the kit to make map E - Atlantic & Lake Erie. For those who do not know this, the maps were originally a set of blank hex sheets and instructions for converting those into a playable map.



I wonder if anyone would have expected the game to remain active for as long as it has. There's no sign of it going away, so I suspect it will keep going for as long as there are zines to host the games. How long that lasts is another matter.

Here's the plan for new games due to start in the next few issues.

#140: Age of Steam, Bus Boss (Croydon), Sceptre of Zavandor
 #141: 1861, Railway Rivals (South Scotland)
 #142: Golden Strider



ZINES RECEIVED

A summary of zines that I've received recently.

Date	Zine/Issue
Dec 19th	...mais n'est-ce pas la gare? 65, Variable Pig 106
Dec 29th	The Abyssinian Prince 308
Jan 3rd	Greatest Hits 272
Jan 4th	Save Your XXs For Me 36
Jan 5th	Ode 281
Jan 17th	Bloodstock 196
Jan 23rd	...mais n'est-ce pas la gare? 66
Jan 28th	Minstrel 297

RATINGS

This is the list of subscribers with a rating of 2.000 or greater. People are only included if they have completed five games.

-	David Smith	3.647
-	Lionel Robbins	3.250
-	Simon Robertson	3.073
▼	Lyndon Gurr	3.024
-	Mark Frueh	3.000
-	Marcus Pratt	2.756
-	Steve Thomas	2.563
-	Stephen Webb	2.387
-	Colin Sharpe	2.271
▲	Michael Graystone	2.169
-	Rob Thomasson	2.141
-	John Colledge	2.000

GAME ORDERS

Please observe these guidelines when sending your orders.

- ✱ The game name *and game number* must be given for each set of orders.
- ✱ Your own name and where relevant, your company name and game colour, must be given for all game orders, preferably at the top of the orders.
- ✱ When you need to refer to other players in a game, you should use their company name *and* colour if these are present in the game.
- ✱ Do not use both sides of the same sheet of paper for different games.
- ✱ When sending orders via e-mail, make sure they are sent as *plain text*, with *FWTDR* or *die rolls* somewhere in the subject line.
- ✱ E-mail orders should be sent to one address only. You may know of more than one address that can reach me, but they all converge on one mailbox. When orders are sent to more than one source, I have to check they are in fact identical.
- ✱ Leave a reasonable space between orders for different games so that they can be easily separated and filed. If you're typing your orders, put at least three blank lines between orders for different games. I expect a minimum of two inches of paper for each game. On the other hand, please do not submit orders using double-line spacing throughout, as this tends to push a simple set of orders onto two sheets of paper.
- ✱ Remember that the deadlines given are when the orders should reach me, *not* when orders should be sent. Please do not rely on speedy postal delivery, or on instant e-mail delivery.

Handling NMRs (No Move Received)

- ✱ If you normally post orders to me and I do not have an e-mail address for you, I cannot remind you but will give as much time as possible for late orders to arrive.
- ✱ If I have an e-mail address for you, I will usually send a reminder the day after the deadline, although this is not guaranteed.
- ✱ If you are unable to provide orders straight away, it is of immense help if you can reply to any reminder and let me know when you hope to provide orders.
- ✱ Games will not normally be held over due to a shortage of orders.
- ✱ My actions for a player with no orders depends on the game, but usually involves holding still unless the game has specific rules for NMRs. For Bus Boss and Railway Rivals runs, I will take a brief look at the game and enter the player runs that cost the least, to avoid skewing the results for the other players.
- ✱ If orders arrive once I have adjudicated a game, I may rerun it, but this is entirely at my discretion and depends on how much time I have.

GAME STANDARDS

Games that involve auctions

I interpret auction orders in the following way.

A bid for a specific figure means just that - you will bid that figure and nothing else. If you want to bid above a previous bid and are willing to go to a maximum bid, then order your bid *up to* that maximum. You will then bid the minimum possible, and keep bidding until you win the auction or reach your maximum. If you are entitled to any discounts, do not deduct the discount before bidding. Any applicable discounts will be deducted after the auction is over.

Bus Boss and Railway Rivals

For Railway Rivals, the games I run use a single building allowance during the building rounds, rather than three separate die rolls.

During the operating rounds, Bus Boss scoring is used for both games. This shares 30 points between all entrants. If only one player enters a run, they get the full 30 points (less any payments they need to make to rivals). Players who complete a run in the same turn share placings. If shared placings mean that points cannot be shared evenly, the poorer player at the time of the run gains the odd point. If the players are tied before the run, the odd point is discarded.

When ordering for operating rounds, you should always list the runs in their proper sequence. You should not list runs you are not entering, as this often makes orders more confusing. If one or more runs is conditional on joint runs or other arrangements being accepted, the conditional order should appear against the run so that I can check the conditions before proceeding.

The maximum you may pay any single player in a run is ten points. If the length of the route you need to enter a run is more than twice the shortest route of any other entrant, your entry will be rejected, but that run will count towards the number that you are allowed to enter.

Rules for carried over runs:

Bus Boss:

The limit of five runs applies at all times.

Railway Rivals:

If 1 run is carried over, then you are still limited to 4 runs.

If 2 or 3 are carried over, then you can enter 5 runs.

If 4 or 5 are carried over, then you can enter 6 runs.

If 6 or 7 are carried over, then you can enter 7, and so on, but the referee may need sorting out if it gets this bad (i.e. building allowances were too small).

In all these cases, you can choose your runs from all those available.



WHO PLAYS WHAT

Peter Berlin	1829-C20, 1829-V21, 1856-Y19	Willem Moene	1800-I20, 1830-G20, 1830-R20, 1830-F21, 1835-B21, 1856-M19, 1856-D22, 1856-M22, 1870-O20, 18Kaas-O19, Acq46, Acq47, OP24
Tony Bromley	RR-2026-DM, RR-2046-DC, RR-2052-IP	Marcus Pratt	NER8, OP24
Simon Brooks	Acq47, BA16, BB-297-VSW, BB-300-KYR, RR-2052-IP, Sop340	Jim Reader	6n12, BA16, BB-293-NIT, BB-297-VSW, BB-300-KYR, OP24, PR4, PR5, PR6, RB14, RR-2026-DM, RR-2029-DC, RR-2046-DC, RR-2047-DX, RR-2052-IP, Sop340
Martin Butcher	1829-C20, 1830-G20, 1856-Y19, 1870-U19, 1895-L20, 18Kaas-O19, BB-293-NIT, LR10, NER8, OP24	Lionel Robbins	1829-J19, 1829-V21, PR6, RR-2047-DX
John Colledge	6n12, Acq45, Acq47	Peter Robbins	RR-2028-DC
Bob Coull	Acq46, BB-297-VSW, BB-300-KYR, RR-2030-DC, RR-2052-IP	Tony Robbins	1837-G21, 1856-D22
Simon Cutforth	1856-M19, 1870-O20	Simon Robertson	BB-297-VSW, BB-300-KYR, RRT1, RR-2030-DC, RR-2051-EA
Tim Franklin	1826-E22, 1850-R22, 1895-L20, 6n12, BA16, RR-2028-DC, Sceptre 1, Sop340	Tony Sait	1830-F21, 1835-B21, 1856-M19, 1856-M22, 18Kaas-O19, PR6, RR-2029-DC
Mark Frueh	1830-R20	Don Shailer	1829-C20, BB-293-NIT, RR-2046-DC, Sop340
Michael Graystone	6n12, Acq45, Acq47, BB-299-NWA, BB-300-KYR, RR-2026-DM, RR-2028-DC, RR-2051-EA, Sop340	Colin Sharpe	6n12, Acq45, Acq47, BB-293-NIT, BB-299-NWA, RR-2047-DX, RR-2051-EA
Lyndon Gurr	1826-E22, 1829-J19, 1850-R22, 1856-M19, 1856-M22, 1870-U19, 1899-Z21, 18Kaas-O19, Acq46, LR10, OP22, Sceptre 1	John Shelley	1826-E22, 1829-J19, 1835-B21, 1856-D22, 1870-U19, 1899-Z21, RB14
Steve Ham	6n12, BA16, BB-293-NIT, BB-299-NWA, RR-2030-DC, RR-2047-DX	David Smith	1829-J19, 1829-C20, Sceptre 1
Geoff Hardingham	1837-G21, OP24, PR4, StP1, Sceptre 1	Don Smith	1826-E22, 1830-G20, 1830-R20, 1830-F21, 1835-B21, 1837-G21, 1870-O20, 1899-Z21
Alan Harvey	1800-I20, 1825-L21, 1829-J19, 1850-R22, 1899-Z21, 18Kaas-O19	Joakim Spångberg	RRT1, Sop340
Mick Haytack	6n12	Allan Stagg	PR5
Mike Head	1830-F21, 1856-Y19, 1856-D22, 1856-M22	Mark Stretch	1830-F21, 1835-B21, OP24, RRT1
John Hopkins	1829-V21	Brian Tappenden	PR5, RR-2026-DM
Mike Hutton	1825-L21, 1829-V21, 1830-R20, 1870-U19, StP1	Paul Tappenden	PR5
Sharon Khan	6n12, BA16, NER8, StP1, Sceptre 1	Rob Thomasson	1829-V21, 1856-Y19, 1856-M22, PR6, StP1
Roger Krueger	1830-G20, 1870-O20, 1895-L20, LR10, RB14	Stephen Webb	1826-E22, 1830-G20, 1837-G21, 1850-R22, 1856-M19, 1856-Y19, 1870-U19, 1870-O20, PR4
Kevin Lee	Acq45, BA16, BB-297-VSW, BB-299-NWA, PR4, RB14, RR-2047-DX, RR-2051-EA, Sceptre 1	Tony Wilcock	Acq45, Acq46, LR10, NER8
Michael Longdin	OP24, RR-2026-DM, RRT1	Derek Wilson	RB14
Richard Lunn	1830-R20, 1856-D22		
John Marsden	Acq46, BB-299-NWA, RR-2029-DC, RR-1051-EA		



OUTSIDE EDGE

FOR WHOM THE DIE ROLLS is brought to you by:

Keith Thomasson, 14 Stepnells, Marsworth, Near Tring, Herts, HP23 4NQ

CONTENTS

◇ Games ◇	1895-L20	44	RR-2029-DC	72
*****	1899-Z21	46	RR-2030-DC	73
◇ New ◇	18Kaas-O19	48	RR-2046-DC	74
1850-R22	6 nimmt! 12	50	RR-2047-DX . . .	Held over
Breaking Away 17	Acquire 45	67	RR-2051-EA	71
*****	Acquire 46	51	RR-2052-IP	75
1800-I20	Acquire 47	52	Saint Petersburg 1 . . .	76
1825-L21 (Unit 3)	Acquire 48 (Powers) . . .	53	Sceptre of Zavandor 1 .	77
1826 E22	Breaking Away 16 . . .	54	Sopwith T340FW	31
1829-J19 (North)	Bus Boss 293-MIT . . .	55	*****	
1829-C20 (South)	Bus Boss 297-VSW . . .	57	◇ Bits and Bobs ◇	
1829-V21 (North)	Bus Boss 299-NWA . . .	58	Board2Pieces	3-5
1830-G20	Bus Boss 300-KYR . . .	56	Deadlines	Below
1830-R20	Lancashire Railways 10 .	59	Game Orders	81
1830-F21	New England Railways 8 .	60	Game Standards	82
1835-B21	Outpost 24	62	Heron Games	78
1837-G21	Outpost 25	63	News from the Rock . .	79
1856-M19	Puerto Rico 4	64	Preview	80
1856-Y19	Puerto Rico 5	65	Ratings	80
1856-D22	Puerto Rico 6	Held over	UK Games Expo	75
1856-M22	Rail Baron 14	66	Waiting Lists	2
1870-U19	Railroad Tycoon 1 . . .	68	Who Plays What	83
1870-O20	RR-2026-DM	70	Zines Received	80
	RR-2028-DC	70		

DEADLINES

Wednesday February 21st 2007
18xx Games - Friday February 16th

Future main deadlines: March 21st April 17th May 16th

E-mail orders must be sent as plain text messages. Do not send as e-mail attachments.
Unreadable submissions will be treated as No Move Received.